



# 2019

# Juvenile Division Overview



## MDOC Juvenile Data

This document contains a snapshot of the following community metrics: referrals, diversions, probations, and facility admissions.

Colin O'Neill, Associate Commissioner  
Maine Department of Corrections  
25 Tyson Drive  
State House Station 111  
Augusta Maine 04333-0111

12/31/2019



# Maine Department of Corrections 2019: Juvenile Division Overview

---

## Contents

- Letter from Associate Commissioner ..... 3
- Juvenile Court Process ..... 4
- Community Metrics ..... 5
  - Statewide Referrals ..... 5
  - Statewide Diversion ..... 12
  - Statewide Probation ..... 14
  - Statewide Admissions ..... 15
  - Statewide LOS Analysis ..... 19
- Regional Metrics ..... 20
  - Region 1 Referrals ..... 20
  - Region 1 Diversions ..... 21
  - Region 1 Probation ..... 23
  - Region 1 Admissions ..... 24
  - Region 2 Referrals ..... 27
  - Region 2 Diversions ..... 28
  - Region 2 Probation ..... 30
  - Region 2 Admissions ..... 31
  - Region 3 Referrals ..... 34
  - Region 3 Diversions ..... 35
  - Region 3 Probation ..... 37
  - Region 3 Admissions ..... 38



## Maine Department of Corrections 2019: Juvenile Division Overview

---

### Letter from Associate Commissioner

Dear fellow Juvenile Justice Stakeholders,

The Maine Department of Corrections (MDOC), Division of Juvenile Services is committed to reducing the use of institutional secure confinement by increasing the capacity and use of community-based programming and supports.

In the last five years, the Division of Juvenile Services has significantly reduced the use of secure confinement (Long Creek Youth Development Center) by strategically investing in community-based programming for justice involved youth. These investments target three major areas: Referral (preadjudication), Supervision (probation), and Commitment/Reentry.

The attached Juvenile Justice Overview Report provides statewide and regional metrics identifying the three major target areas listed above.

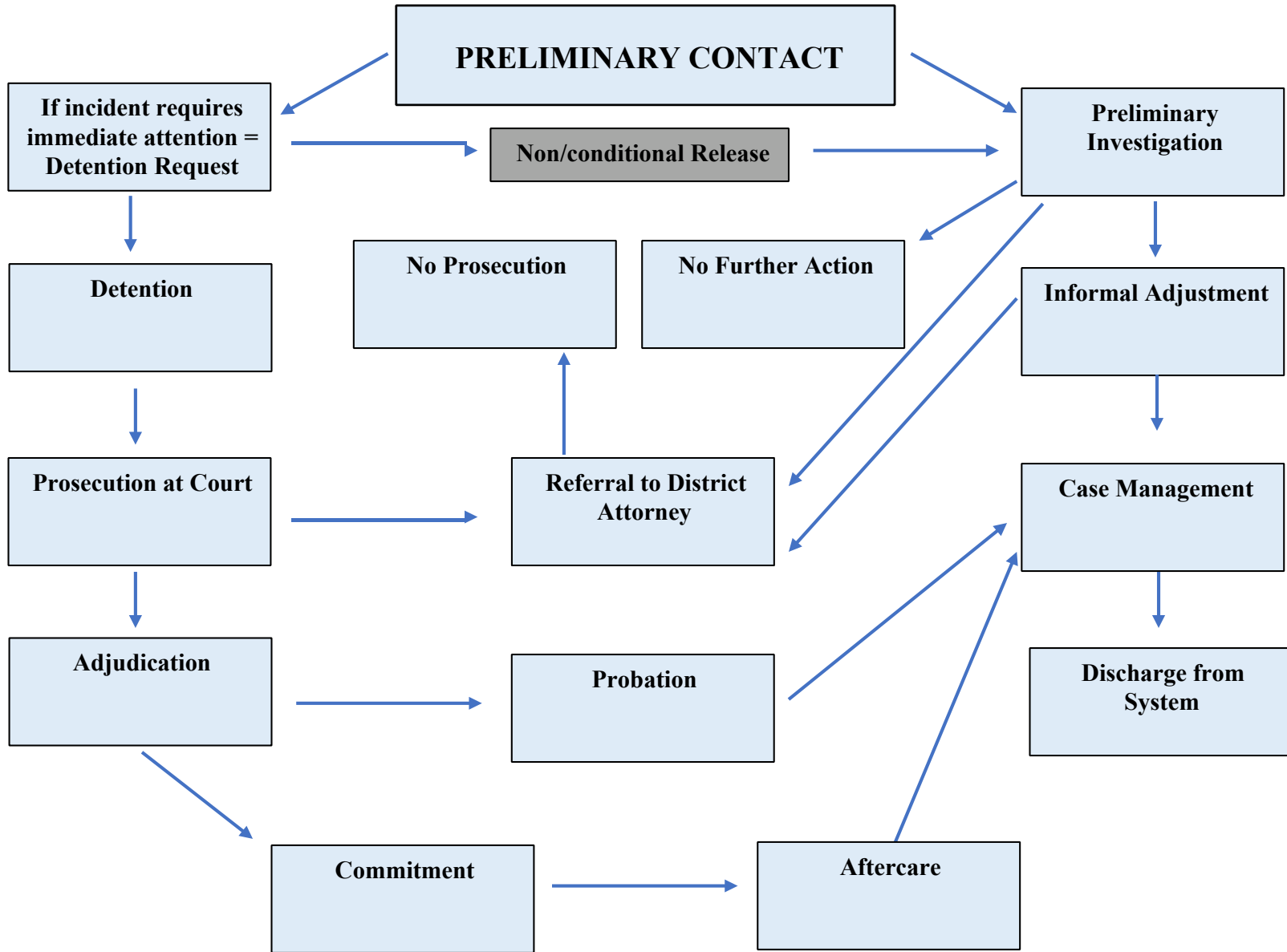
I would like to thank all the MDOC staff, community providers and stakeholders for contributing to this work. I would like to extend a special thanks to Atlantic Corporation for their dedication and expertise in completing this report.

Sincerely,

Colin O'Neill, LCSW  
Associate Commissioner  
Maine Department of Corrections  
Division of Juvenile Service



### Juvenile Court Process





# Maine Department of Corrections 2019: Juvenile Division Overview

## Community Metrics

### Statewide Referrals

The total number of people referred to community corrections by police agencies or correctional offices.

Figure 1a: Referral Population (all referrals)

<b>All Referrals</b>													
	Q1			Q2			Q3			Q4			
	Jan-19	Feb-19	Mar-19	Apr-19	May-19	Jun-19	Jul-19	Aug-19	Sep-19	Oct-19	Nov-19	Dec-19	<b>YTD</b>
R1 Referrals	92	66	79	72	109	84	87	76	88	97	69	77	<b>996</b>
R2 Referrals	65	54	59	72	86	62	64	71	75	94	78	53	<b>833</b>
R3 Referrals	42	45	67	41	42	41	57	66	65	63	49	49	<b>627</b>
Unclassified	0	0	0	0	0	0	0	0	0	0	0	0	<b>0</b>
<b>All Referrals</b>	<b>199</b>	<b>166</b>	<b>206</b>	<b>185</b>	<b>237</b>	<b>187</b>	<b>208</b>	<b>214</b>	<b>231</b>	<b>255</b>	<b>197</b>	<b>179</b>	<b>2464</b>
Males	142	114	142	138	164	124	148	154	169	186	145	124	<b>1750</b>
Females	57	52	64	47	73	63	60	60	62	69	52	55	<b>714</b>
White	157	145	174	152	197	156	162	180	182	209	156	137	<b>2007</b>
YOC	26	15	24	18	24	20	28	16	30	30	26	27	<b>284</b>
Hispanic/Latino	6	4	4	11	10	5	7	2	8	10	7	6	<b>80</b>
Other/Mixed	10	2	4	4	6	6	11	16	11	6	8	9	<b>93</b>

Figure 1b: Referral Population (1<sup>st</sup> time referrals)

<b>First Time Referrals</b>													
	Q1			Q2			Q3			Q4			
	Jan-19	Feb-19	Mar-19	Apr-19	May-19	Jun-19	Jul-19	Aug-19	Sep-19	Oct-19	Nov-19	Dec-19	<b>YTD</b>
R1 1st Referrals	51	41	42	37	56	43	52	33	57	51	41	48	<b>552</b>
R2 1st Referrals	29	23	31	36	49	31	30	34	39	49	47	24	<b>422</b>
R3 1st Referrals	19	28	42	20	21	25	26	42	32	38	31	28	<b>352</b>
Unclassified	0	0	0	0	0	0	0	0	0	0	0	0	<b>0</b>
<b>1st Time Referrals</b>	<b>99</b>	<b>92</b>	<b>115</b>	<b>93</b>	<b>126</b>	<b>99</b>	<b>108</b>	<b>110</b>	<b>131</b>	<b>139</b>	<b>120</b>	<b>100</b>	<b>1332</b>
Males	70	60	75	59	82	64	77	74	88	94	81	60	<b>884</b>
Females	29	32	40	34	44	35	31	36	43	45	39	40	<b>448</b>
White	75	83	100	81	110	86	85	95	105	114	95	79	<b>1108</b>
YOC	14	6	8	8	10	9	10	7	12	16	15	12	<b>127</b>
Hispanic/Latino	4	3	3	2	3	2	4	0	4	5	5	2	<b>37</b>
Other/Mixed	6	0	4	2	3	2	9	8	10	4	5	7	<b>60</b>



# Maine Department of Corrections 2019: Juvenile Division Overview

Figure 2: Referrals this Calendar Year (All Referrals & 1<sup>st</sup> Time)

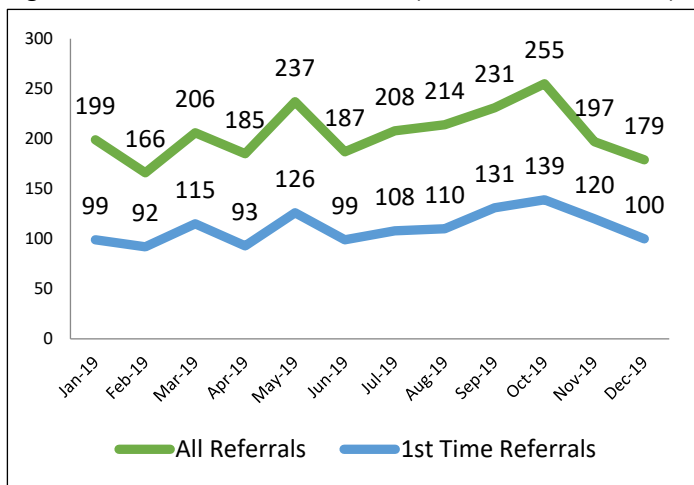


Figure 3: All Referrals by Region (n=and %)

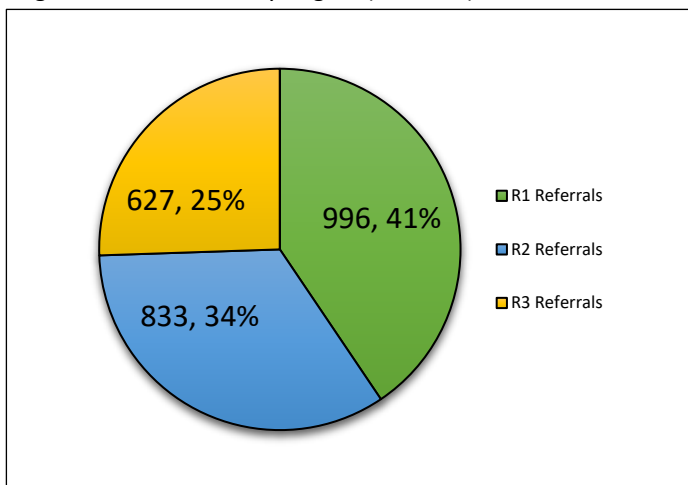


Figure 4: All Referrals by Gender (calendar year)

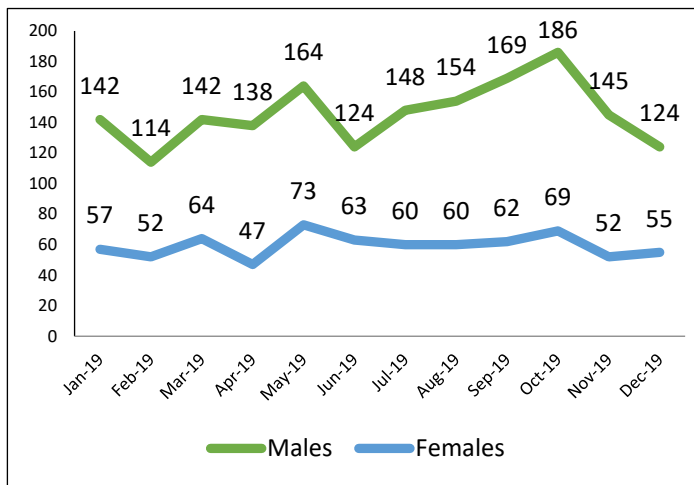


Figure 5: All Referrals by Gender (n= and %)

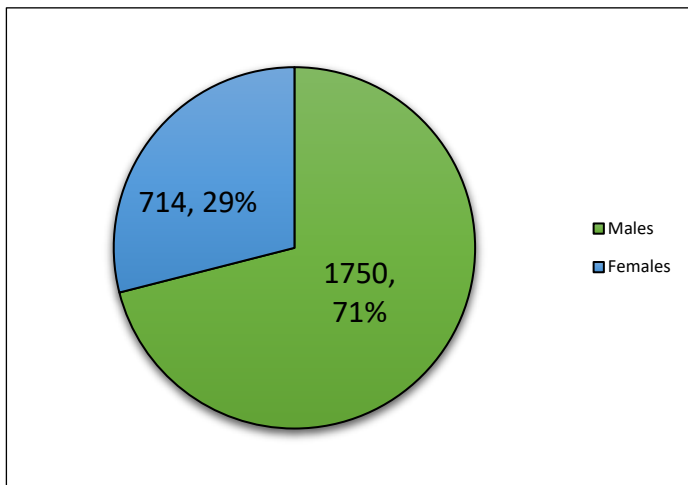


Figure 6: All Referrals by Race/Ethnicity (calendar year)

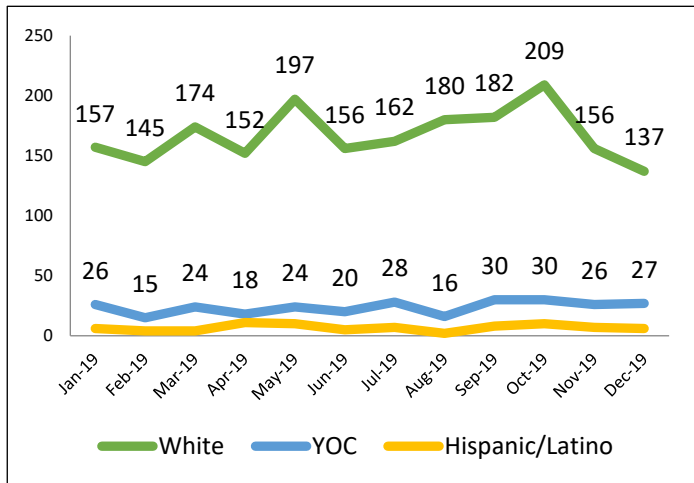
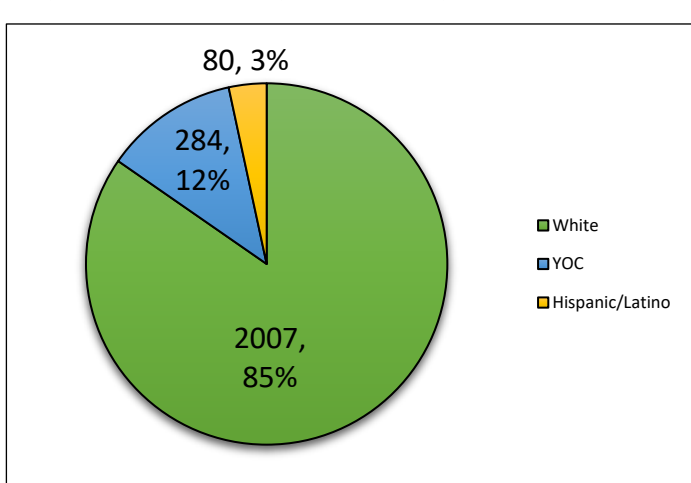


Figure 7: All Referrals by Race/Ethnicity (n= and %)





# Maine Department of Corrections 2019: Juvenile Division Overview

Figure 8: All Referrals by Offense Type

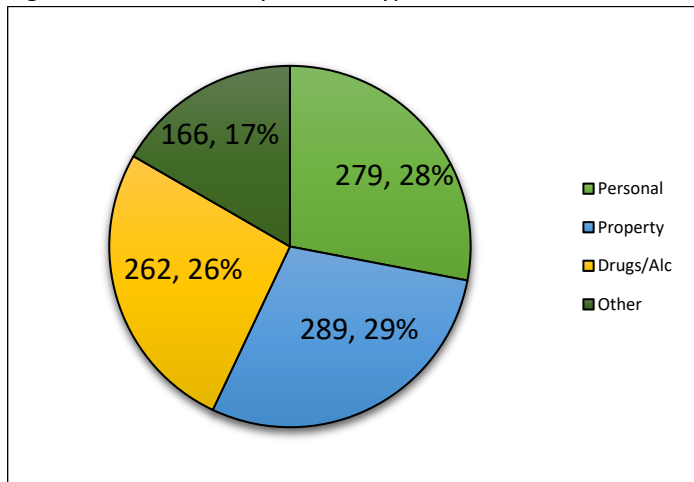


Figure 9: All Referrals by Offense Class

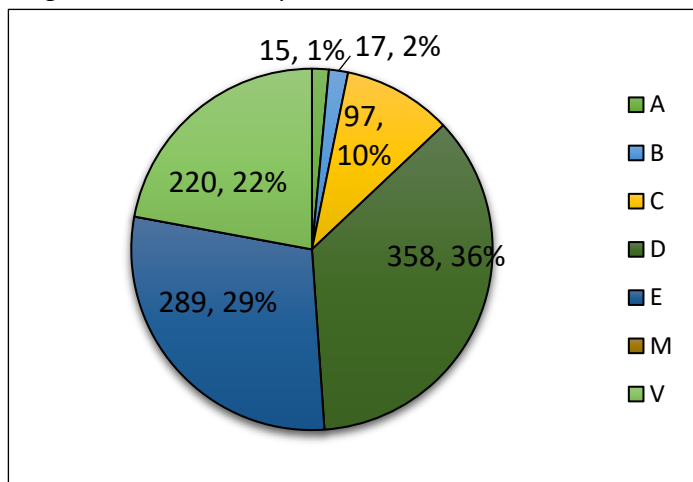
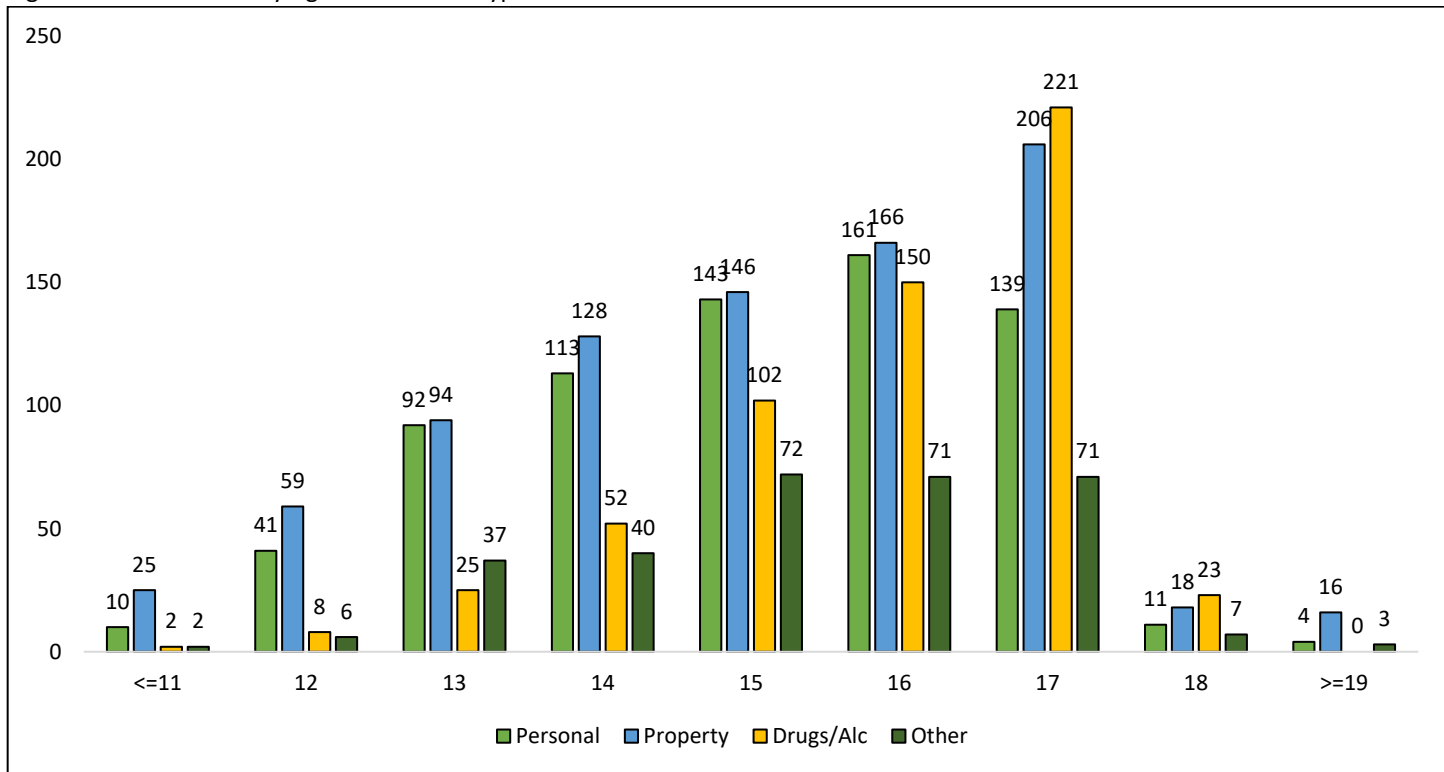


Figure 10: All Referrals by Age and Offense Type





# Maine Department of Corrections 2019: Juvenile Division Overview

Figure 11: All Referrals by Age and Offense Class

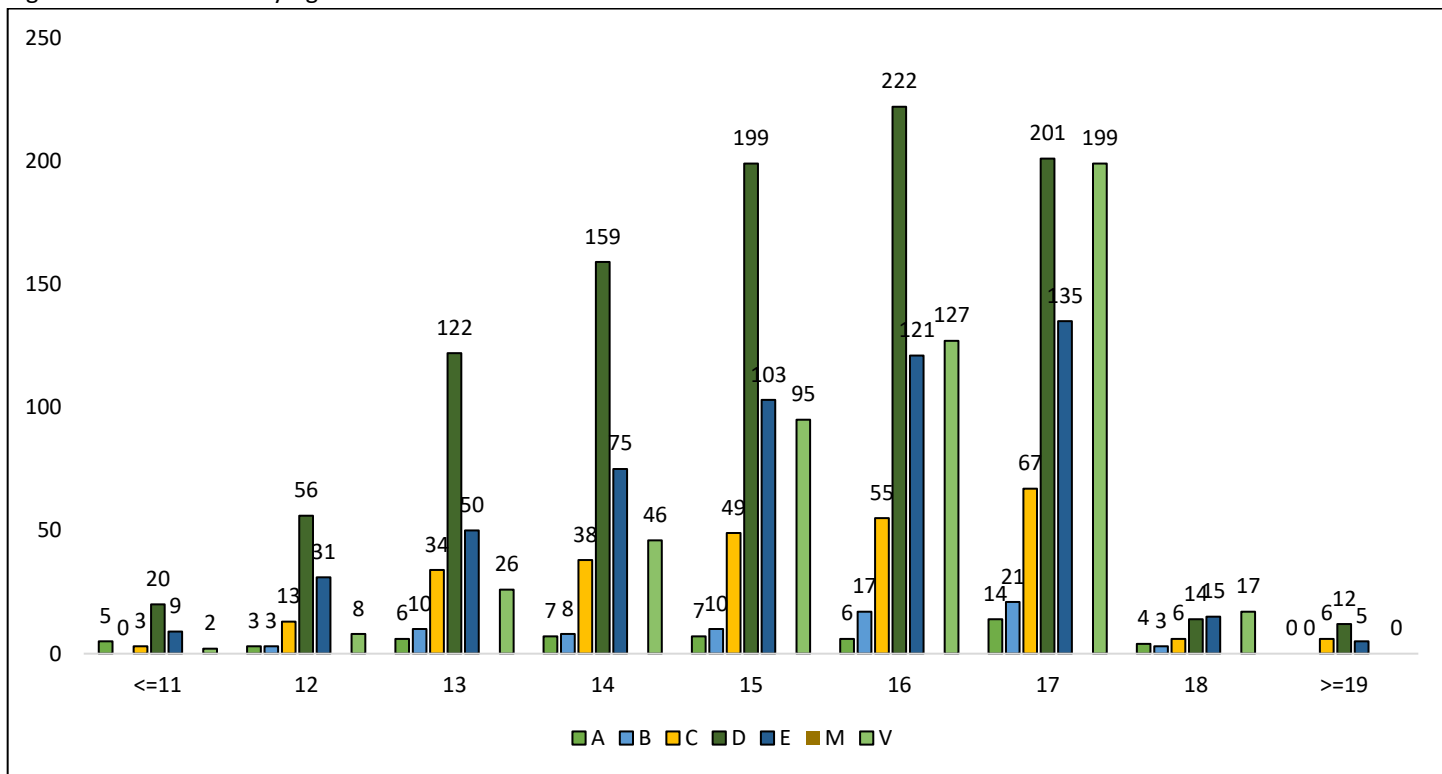
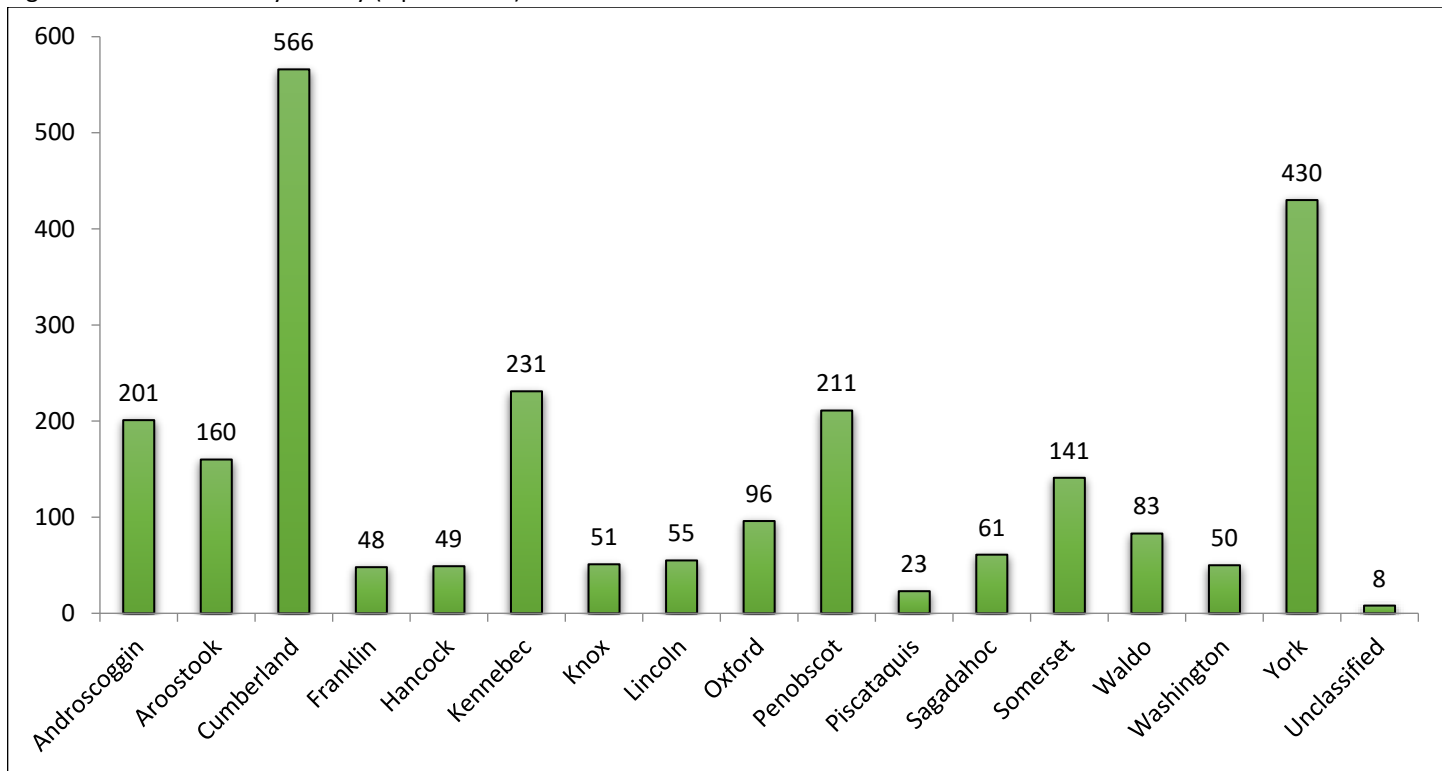


Figure 12: All Referrals by County (alphabetical)







# Maine Department of Corrections 2019: Juvenile Division Overview

Figure 13: All Referrals by Police Agency (Top 25)

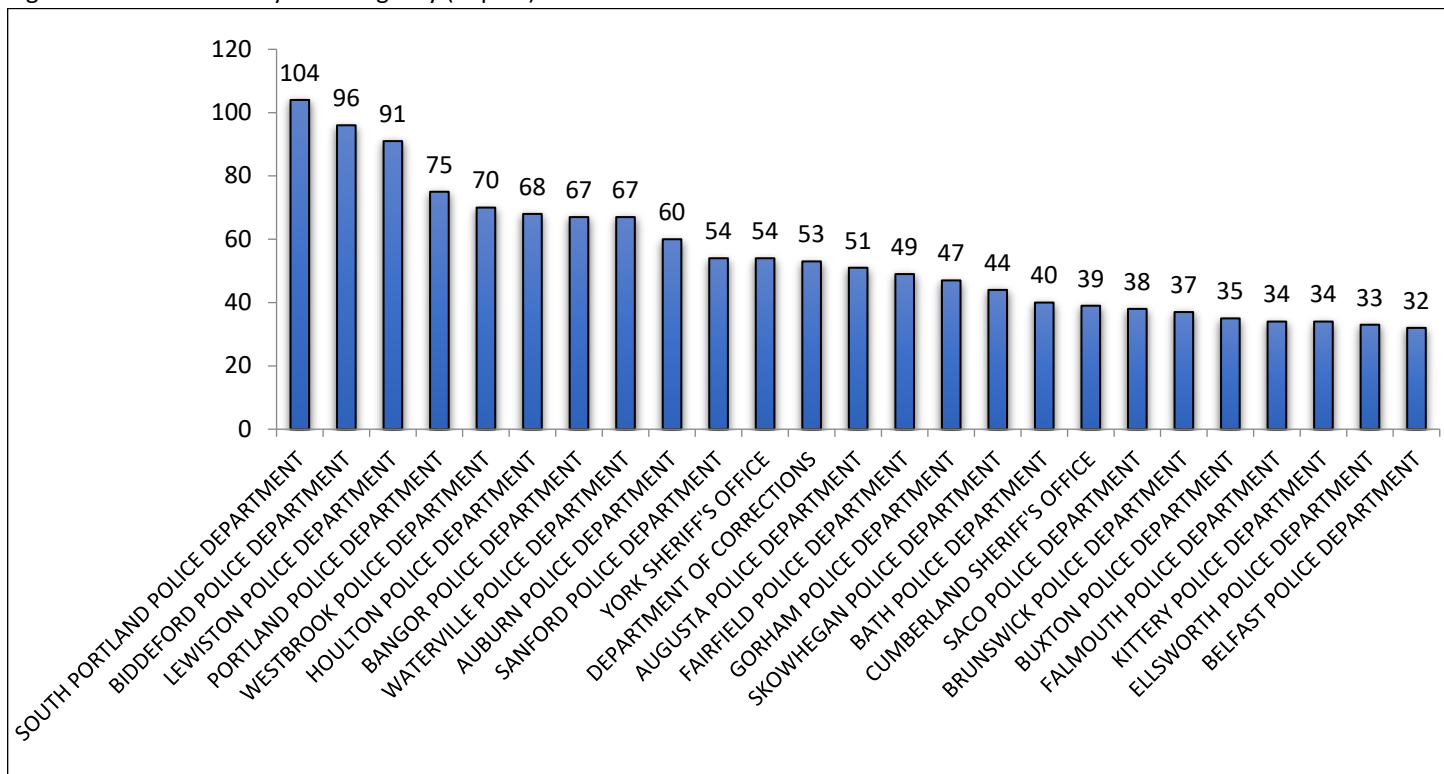
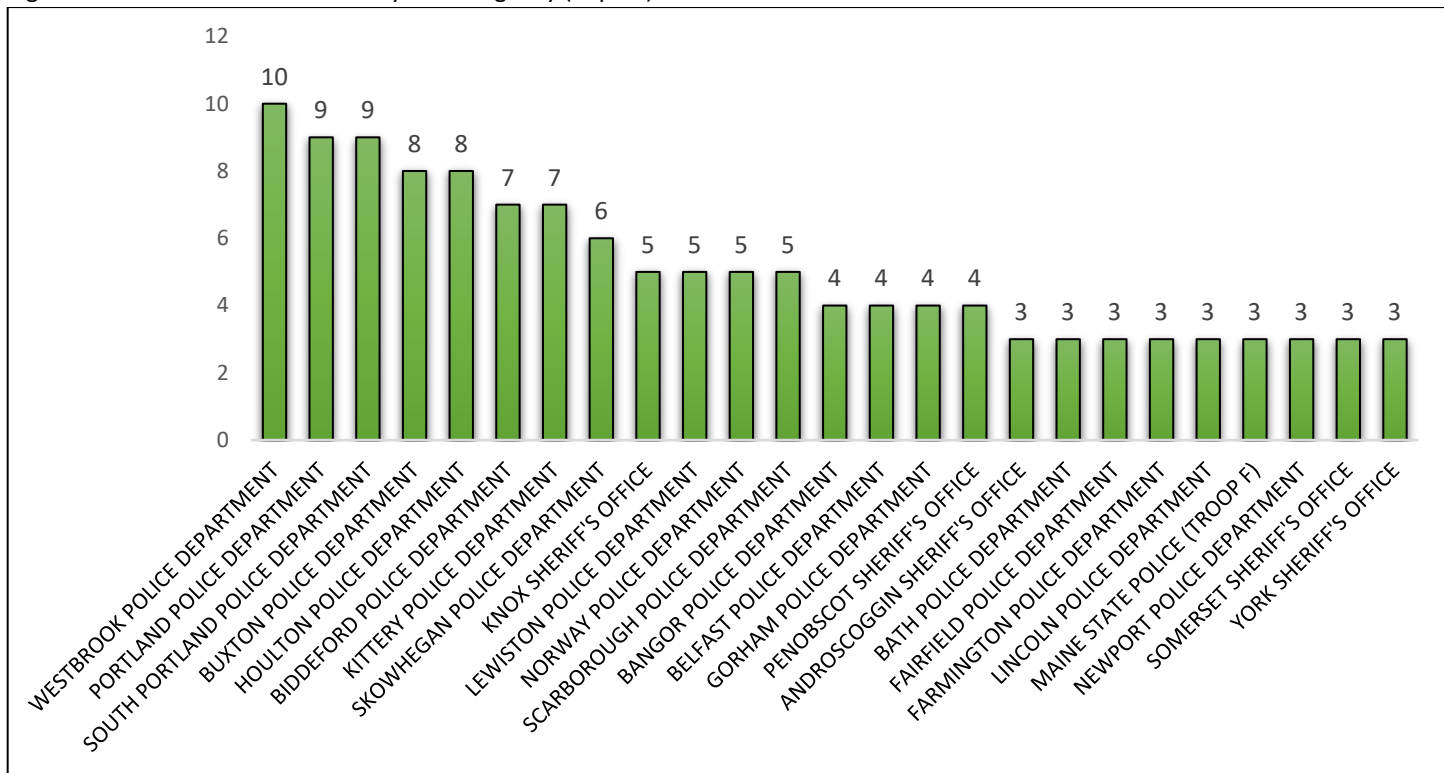


Figure 14: December All Referrals by Police Agency (Top 25)





# Maine Department of Corrections 2019: Juvenile Division Overview

Figure 15: 1<sup>st</sup> Referrals by Gender (calendar year)

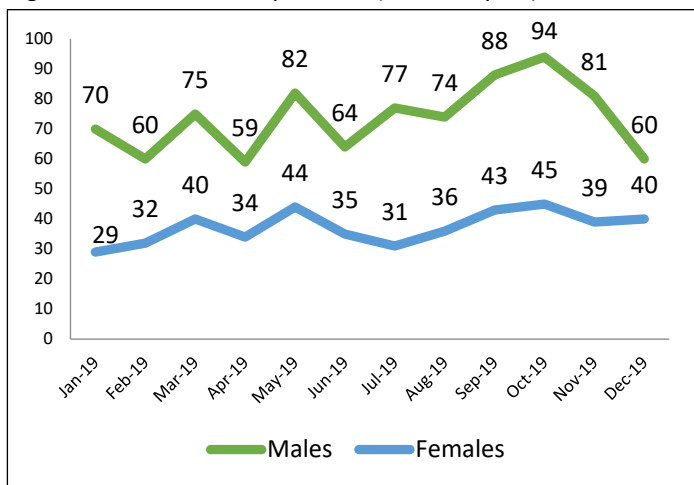


Figure 16: 1<sup>st</sup> Referrals by Gender (n= and %)

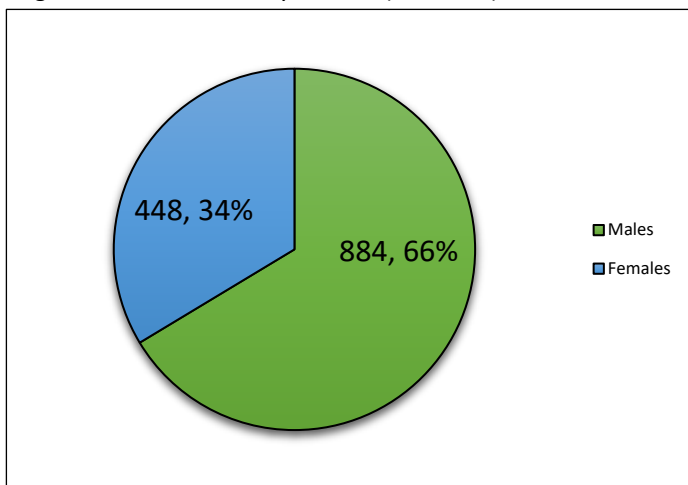


Figure 17: 1<sup>st</sup> Referrals by Race/Ethnicity (calendar year)

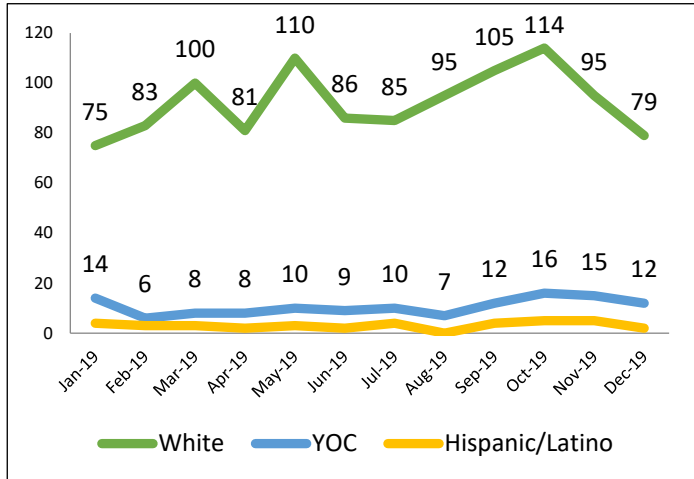


Figure 18: 1<sup>st</sup> Referrals by Race/Ethnicity (n= and %)

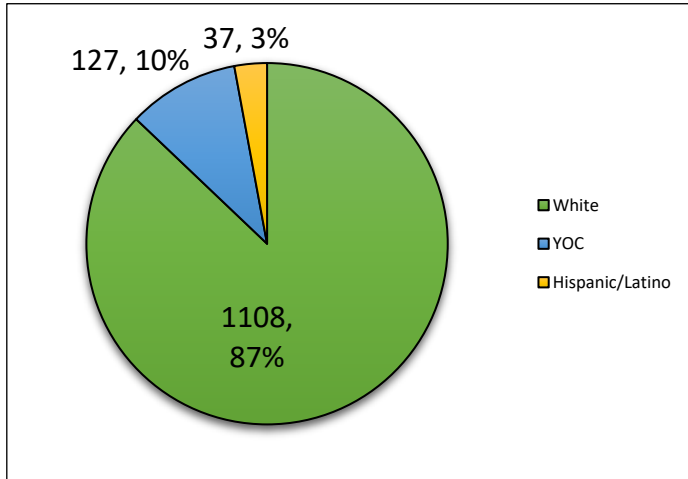


Figure 19: 1<sup>st</sup> Referrals by Offense Type (calendar year)

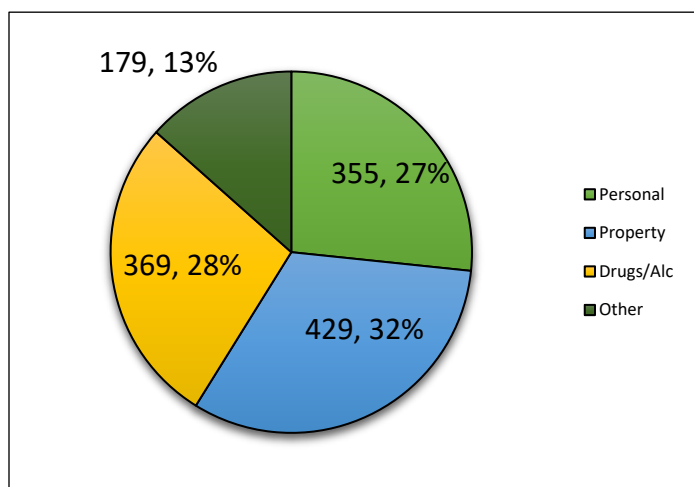
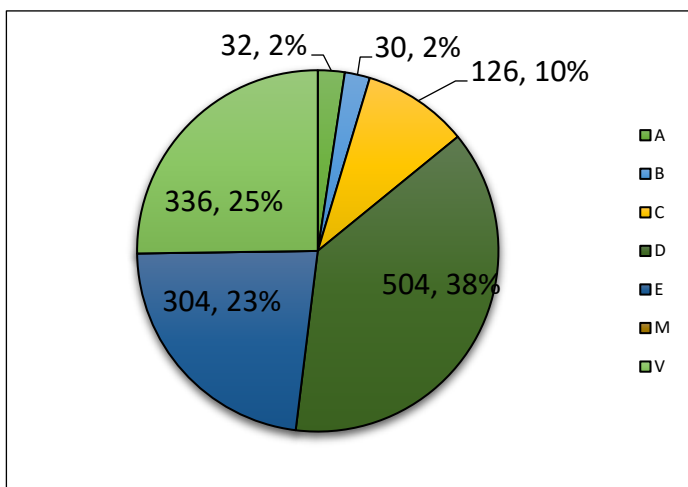


Figure 20: 1<sup>st</sup> Referrals by Offense Class (n= and %)





# Maine Department of Corrections 2019: Juvenile Division Overview

Figure 21: 1<sup>st</sup> Referrals by County (alphabetical)

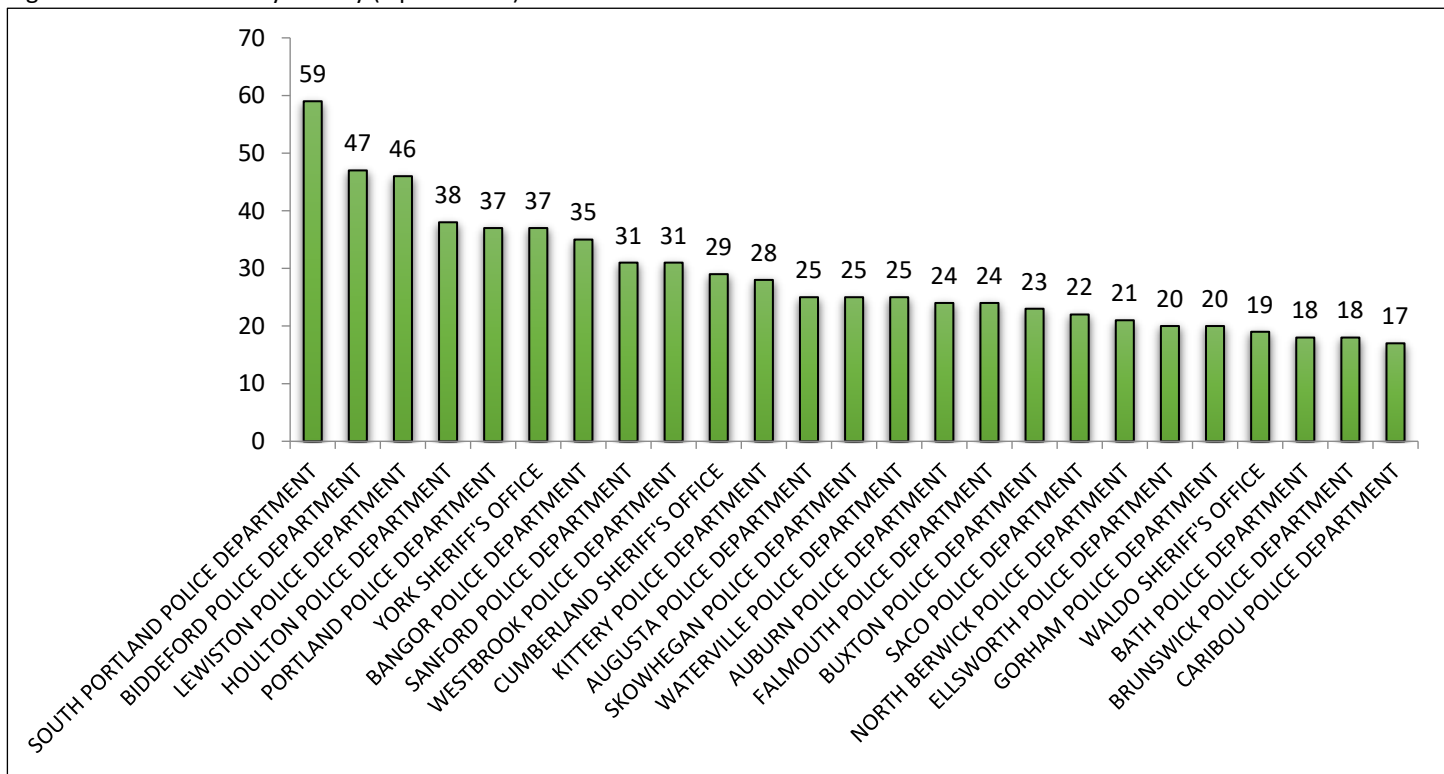
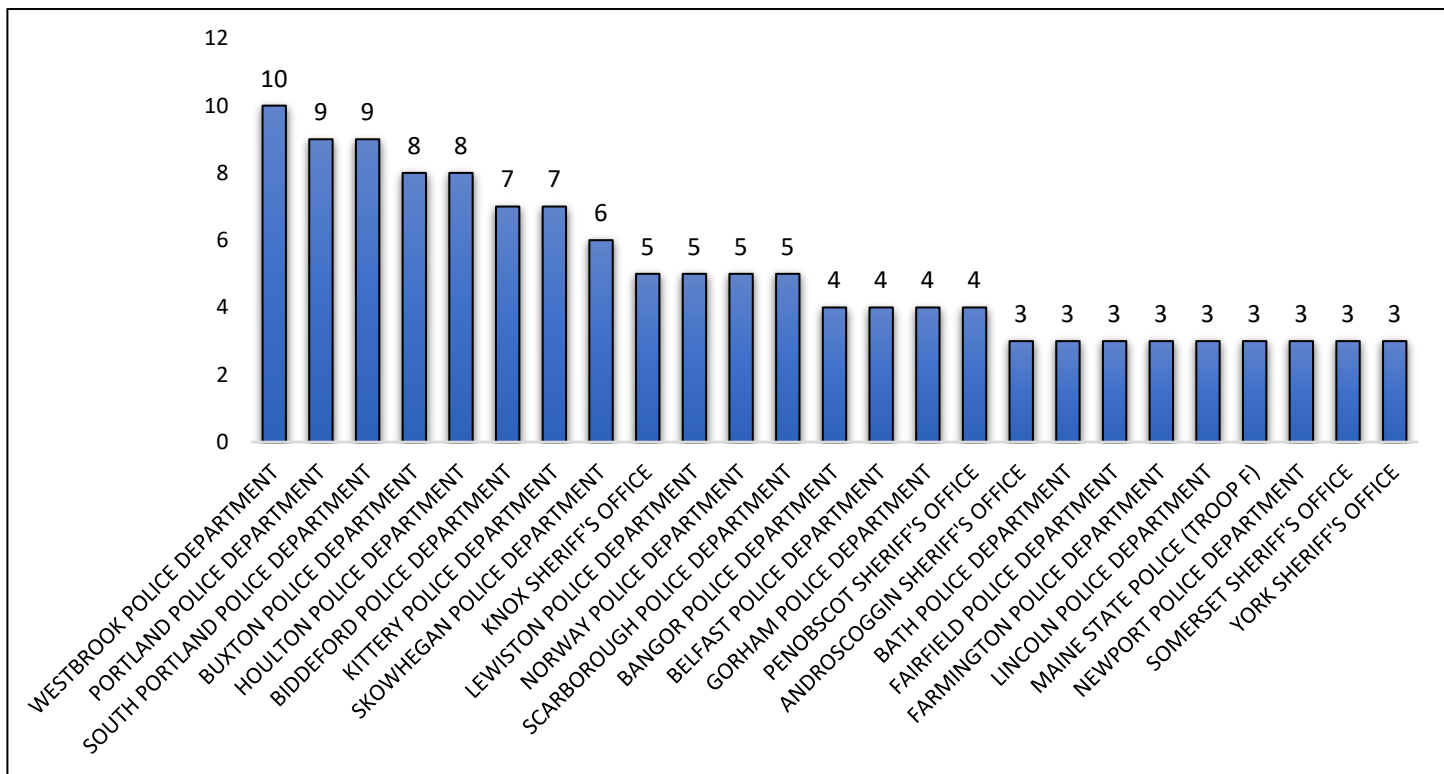


Figure 22: 1<sup>st</sup> Referrals by Police Agency (Top 25)





# Maine Department of Corrections 2019: Juvenile Division Overview

## Statewide Diversion

Figure 23: Diversion Population Tables\*

Overall Diversion Population													
	Q1			Q2			Q3			Q4			YTD
	Jan-19	Feb-19	Mar-19	Apr-19	May-19	Jun-19	Jul-19	Aug-19	Sep-19	Oct-19	Nov-19	Dec-19	
R1 Cases	34	20	25	21	36	28	21	16	27	38	27	23	<b>316</b>
R2 Cases	24	14	23	13	19	15	20	17	25	18	23	21	<b>232</b>
R3 Cases	14	23	23	22	17	21	20	35	24	28	27	25	<b>279</b>
<b>All Cases</b>	<b>72</b>	<b>57</b>	<b>71</b>	<b>56</b>	<b>72</b>	<b>64</b>	<b>61</b>	<b>68</b>	<b>76</b>	<b>84</b>	<b>77</b>	<b>69</b>	<b>827</b>
R1 Diversions	26	15	17	15	20	24	19	11	22	34	23	18	<b>244</b>
R2 Diversions	16	11	17	11	14	11	16	7	17	17	19	19	<b>175</b>
R3 Diversions	6	14	13	13	13	12	12	27	17	19	23	20	<b>189</b>
<b>All Diversions</b>	<b>48</b>	<b>40</b>	<b>47</b>	<b>39</b>	<b>47</b>	<b>47</b>	<b>47</b>	<b>45</b>	<b>56</b>	<b>70</b>	<b>65</b>	<b>57</b>	<b>608</b>
R1 Diversion Rate	76%	75%	68%	71%	56%	86%	90%	69%	81%	89%	85%	78%	<b>77%</b>
R2 Diversion Rate	67%	79%	74%	85%	74%	73%	80%	41%	68%	94%	83%	90%	<b>75%</b>
R3 Diversion Rate	43%	61%	57%	59%	76%	57%	60%	77%	71%	68%	85%	80%	<b>68%</b>
<b>Total Diversion Rate</b>	<b>67%</b>	<b>70%</b>	<b>66%</b>	<b>70%</b>	<b>65%</b>	<b>73%</b>	<b>77%</b>	<b>66%</b>	<b>74%</b>	<b>83%</b>	<b>84%</b>	<b>83%</b>	<b>74%</b>

\*Counts for diversion and diversion rates are for 1<sup>st</sup> time referrals only.

Figure 24: All Diversions Overtime

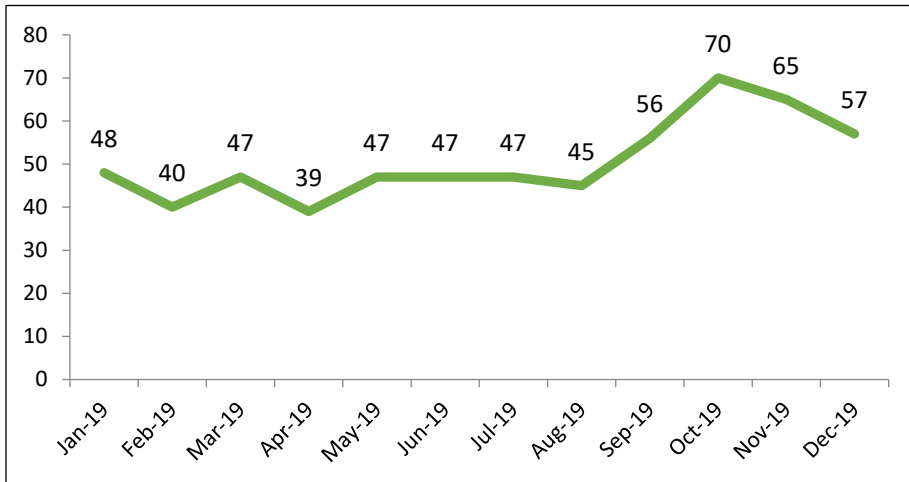
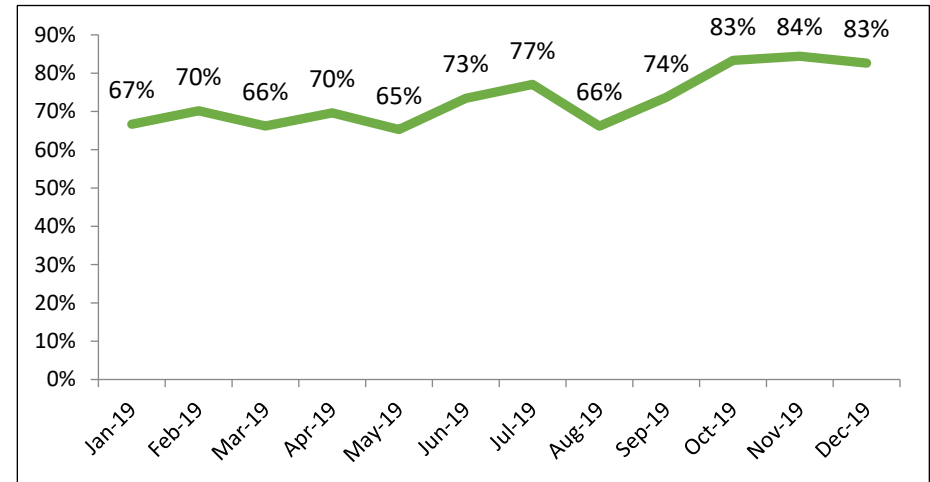


Figure 25: Diversion Rate Overtime





# Maine Department of Corrections 2019: Juvenile Division Overview

Figure 26: Diversion Rate (by Gender)

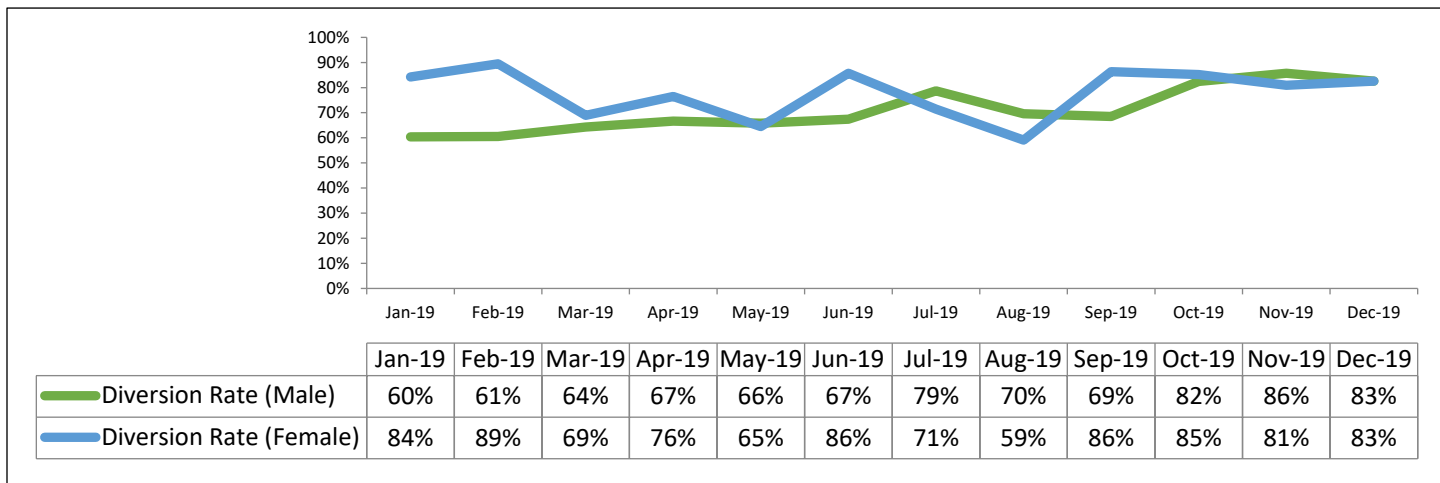
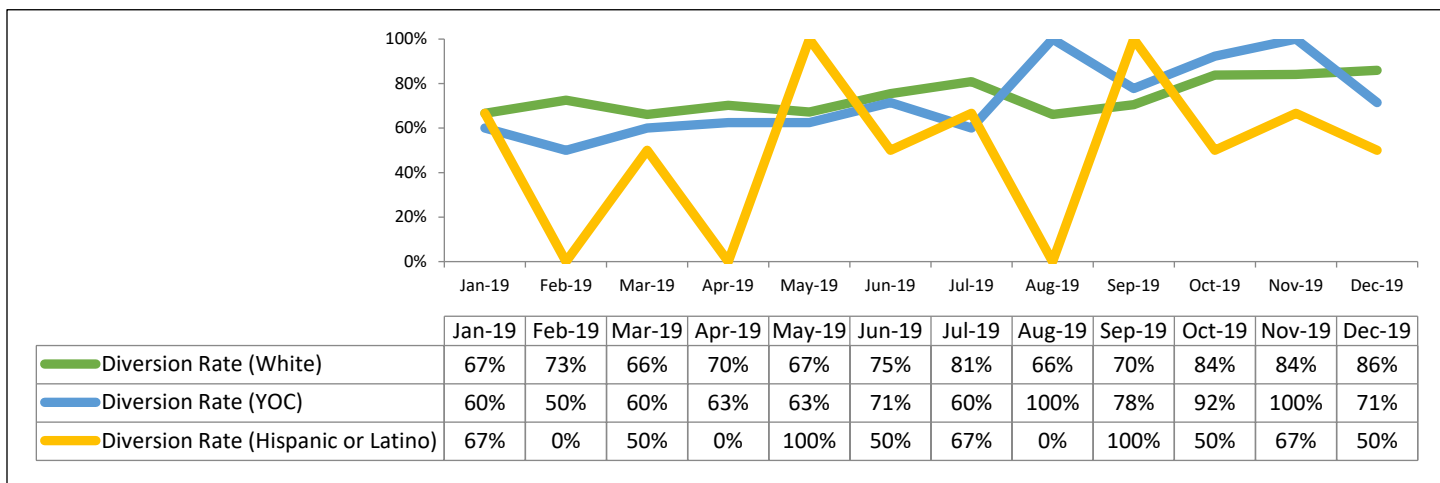
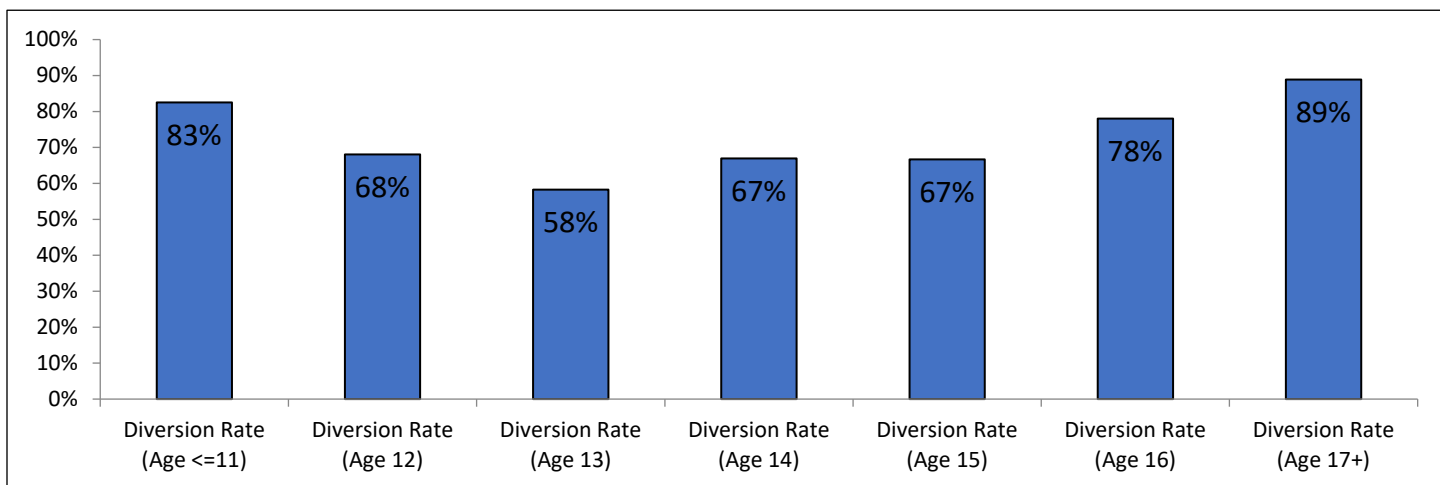


Figure 27: Diversion Rate (by Race/Ethnicity)\*



\*For the months with 0% diversion it implies no youth in this category were divertible.

Figure 28: Diversion Rate (by Age)





# Maine Department of Corrections 2019: Juvenile Division Overview

## Statewide Probation

Figure 29: Probation Tables Over Time

Overall Probation Population														
	Q1			Q2			Q3			Q4				
	Jan-19	Feb-19	Mar-19	Apr-19	May-19	Jun-19	Jul-19	Aug-19	Sep-19	Oct-19	Nov-19	Dec-19	YTD	Avg. Month
On Probation	197	186	179	168	163	156	153	158	154	148	152	147		
Started	13	11	11	7	17	11	20	6	9	11	13	12	<b>141</b>	<b>11.8</b>
Completed	14	10	11	7	9	8	9	6	5	2	12	8	<b>101</b>	<b>8.4</b>
Violations	9	15	11	11	13	8	4	3	9	6	5	2	<b>96</b>	<b>8.0</b>

Figure 30: On Probation

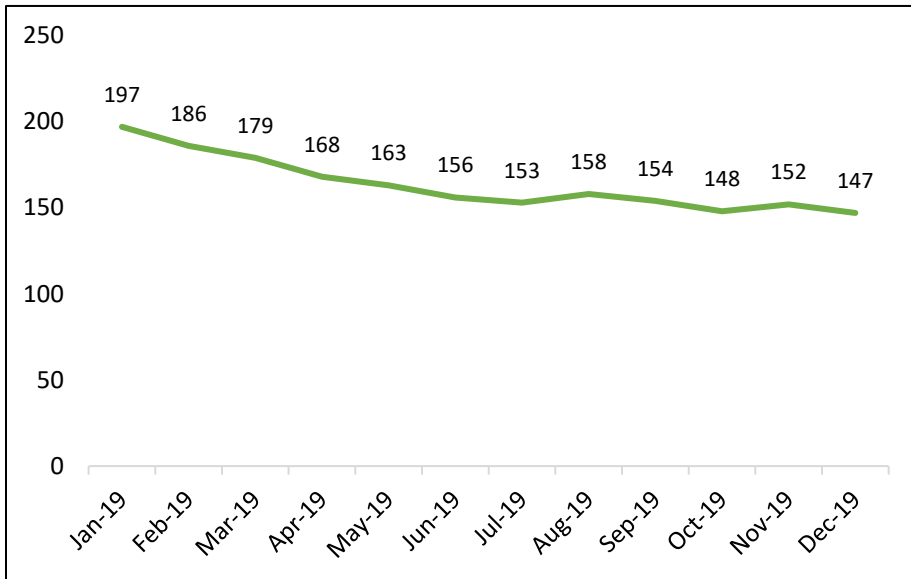
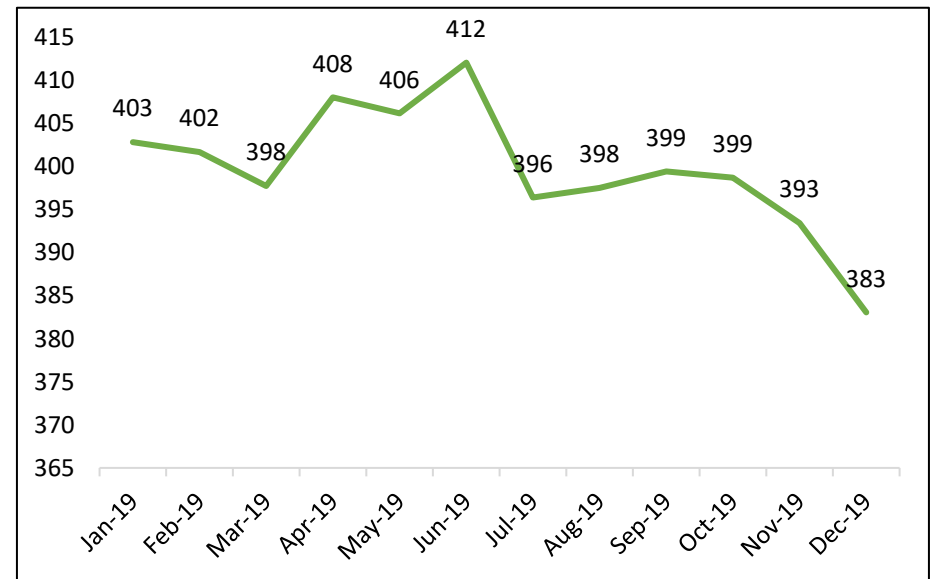


Figure 31: Probation Average LOS (Days)





# Maine Department of Corrections 2019: Juvenile Division Overview

## Statewide Admissions

Figure 35: Total Shock Sentences Over Time

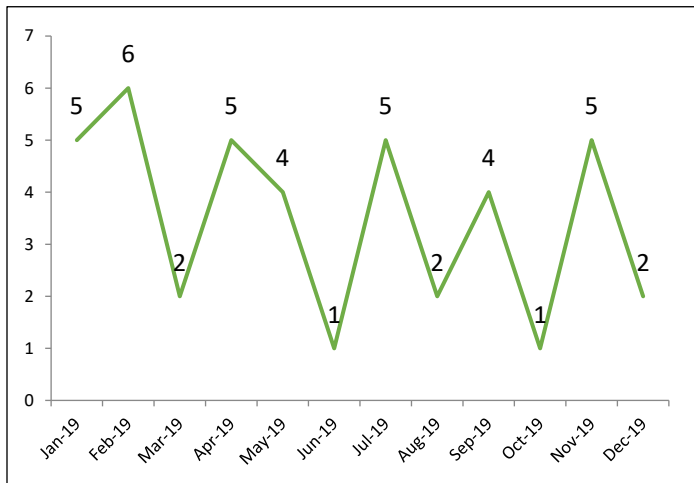


Figure 36: Shock Sentences by Gender

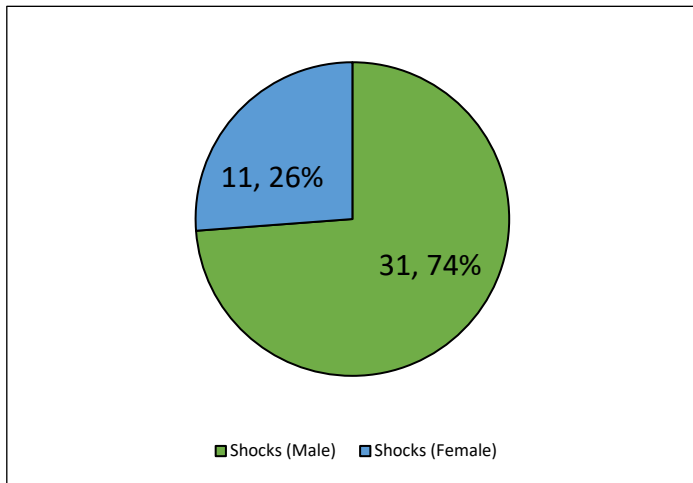


Figure 37: Shock Sentences by Race/Ethnicity

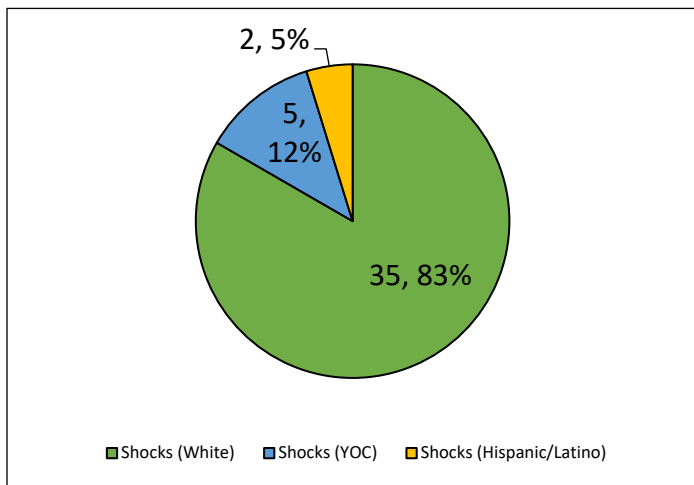
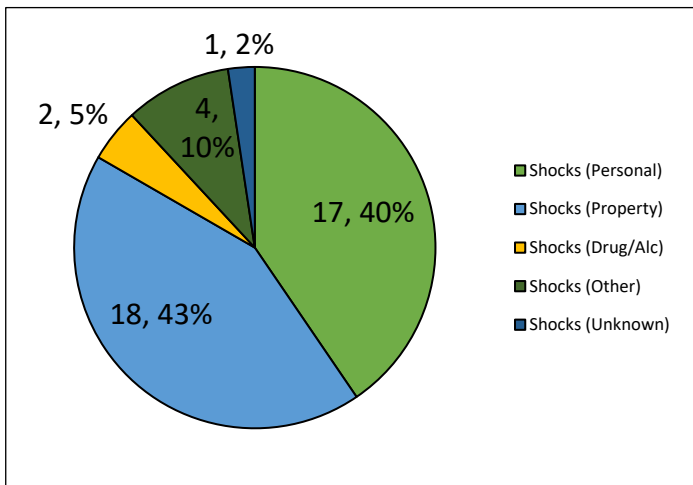


Figure 38: Shock Sentences by Offense Type





# Maine Department of Corrections 2019: Juvenile Division Overview

Figure 39: Total Detention Admissions Over Time

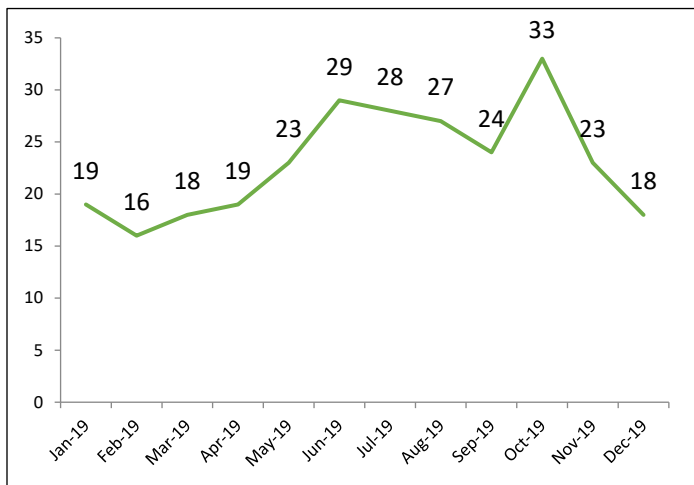


Figure 40: Detentions by Gender

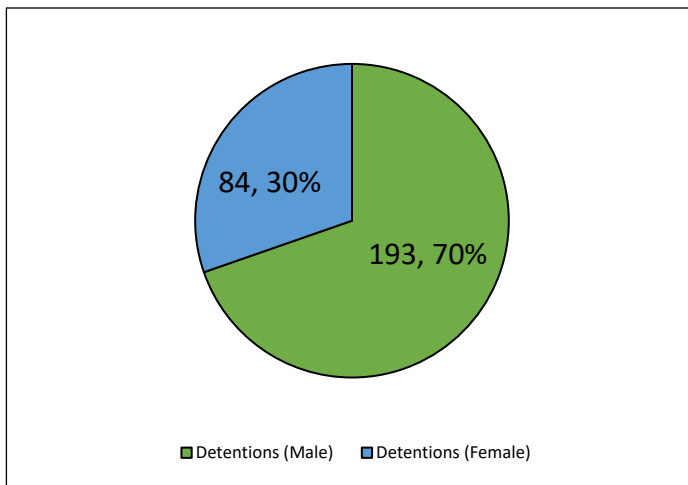


Figure 41: Detentions by Race/Ethnicity

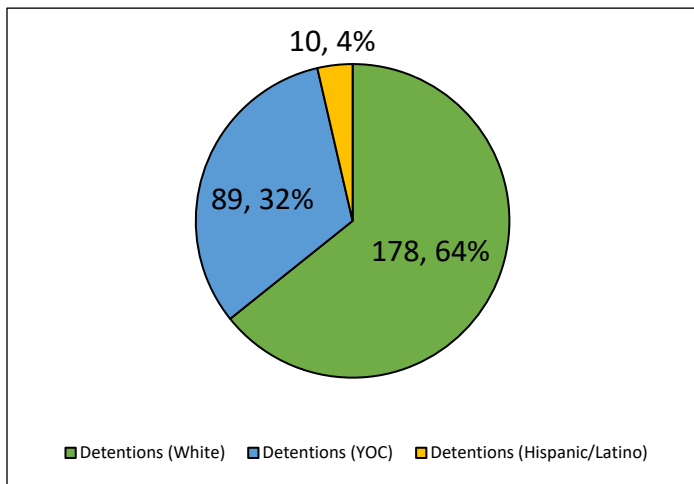
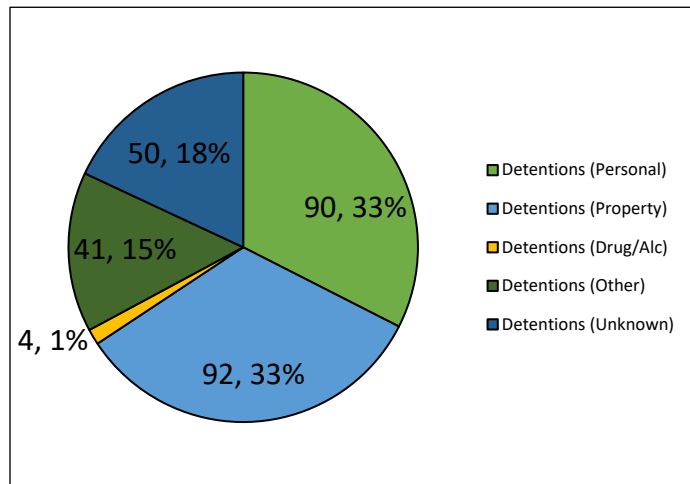


Figure 42: Detentions by Offense Type







# Maine Department of Corrections 2019: Juvenile Division Overview

Figure 43: Total Commitment Admissions Over Time

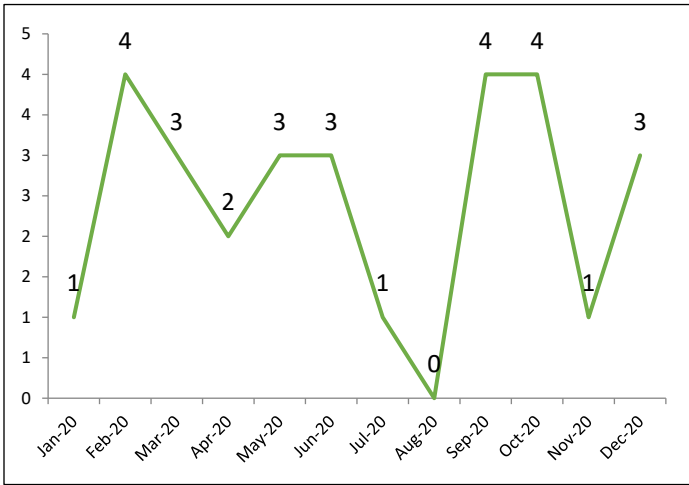


Figure 44: Commitments by Gender

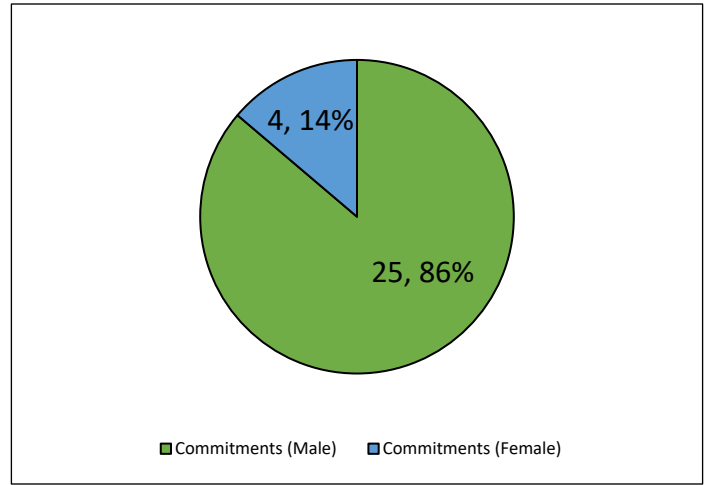


Figure 45: Commitments by Race/Ethnicity

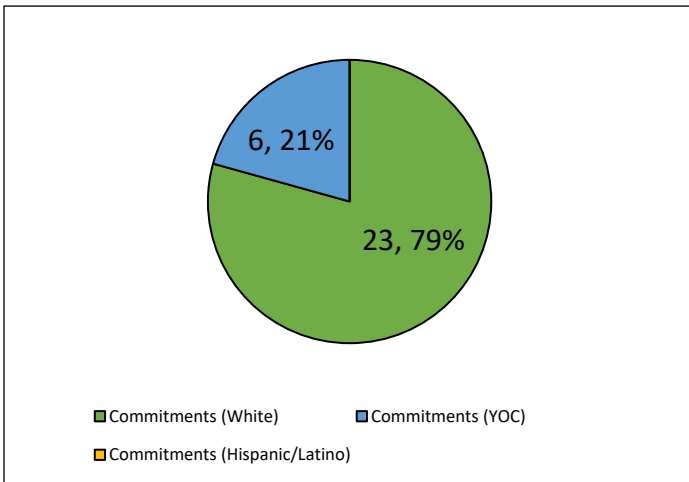
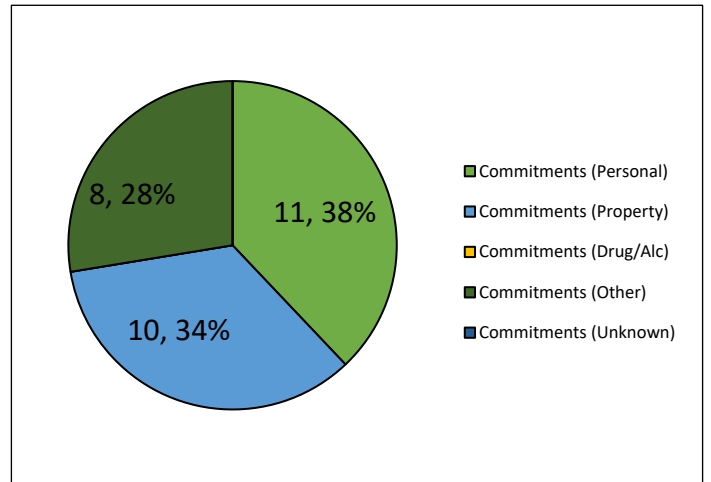


Figure 46: Commitments by Offense Type





# Maine Department of Corrections 2019: Juvenile Division Overview

Figure 47: All Detentions by Age

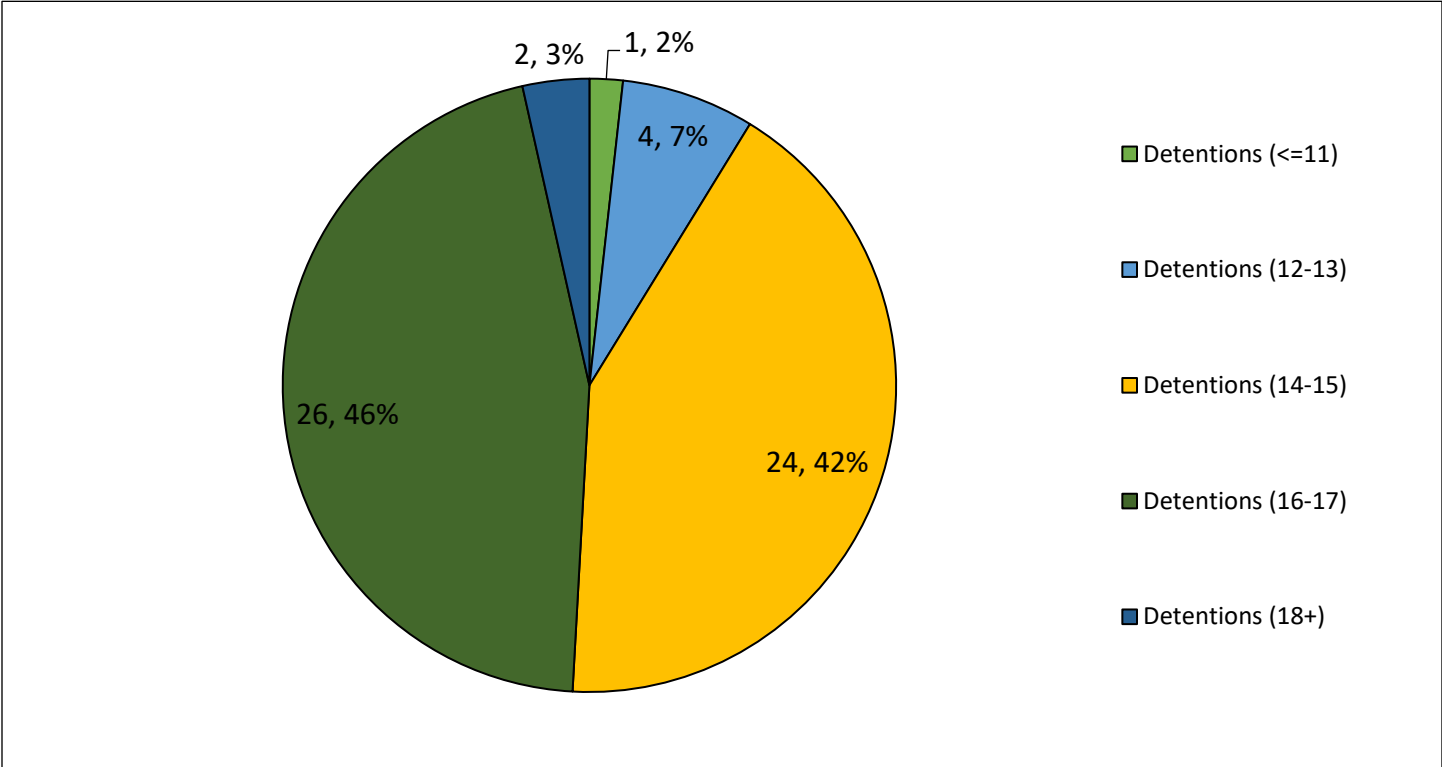
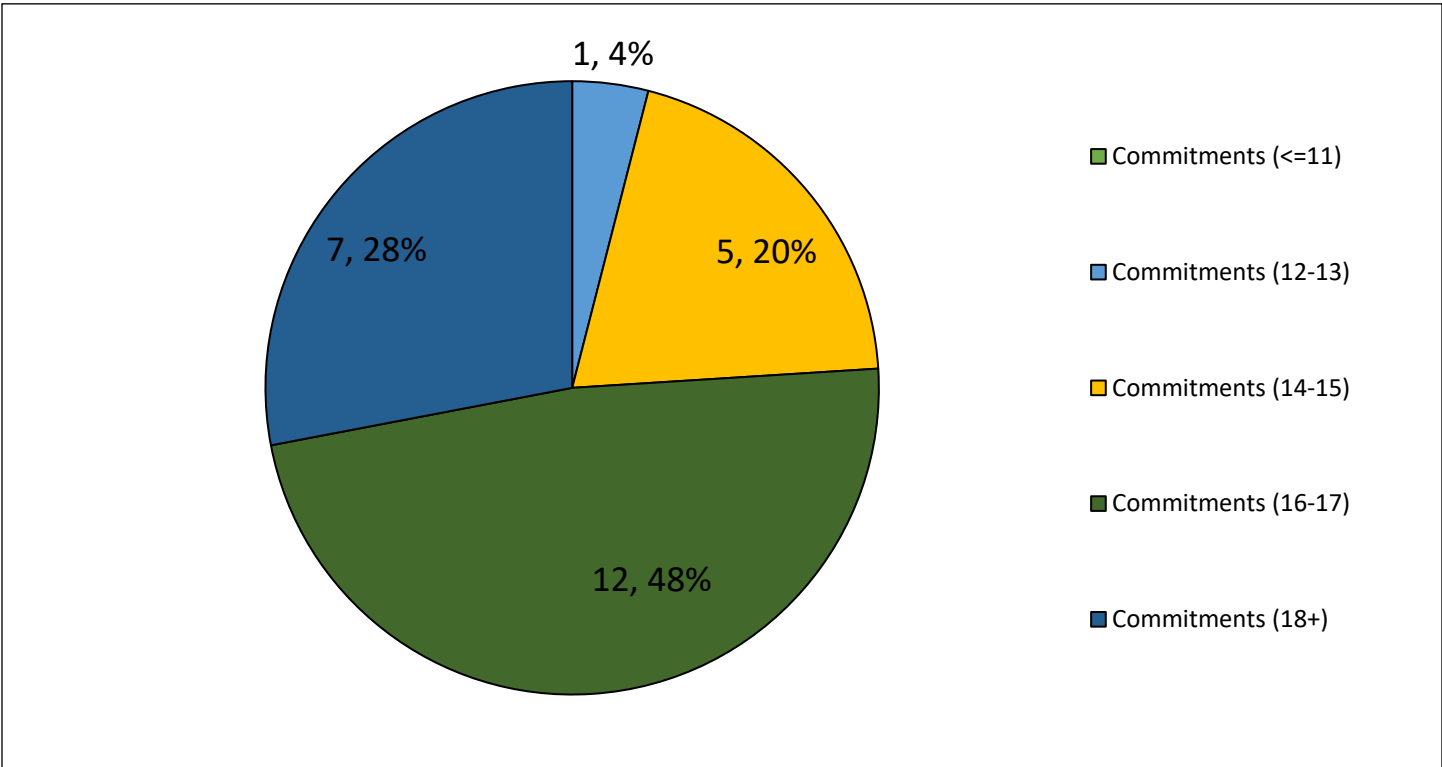


Figure 48: All Commitments by Age





# Maine Department of Corrections 2019: Juvenile Division Overview

## Statewide LOS Analysis

Figure 49: Average Detained Youth LOS Trendline Analysis

All Regions Detained AVERAGE LOS YTD Analysis													
	Q1			Q2			Q3			Q4			YTD Average
	Jan	Feb	Mar	Apr	May	Jun	Jul	Aug	Sep	Oct	Nov	Dec	
2015	20.8	21.0	21.4	21.5	20.9	21.9	22.0	21.4	20.9	20.8	21.1	18.9	21.0
2016	18.7	19.2	18.2	18.7	18.9	18.7	18.7	18.9	20.5	21.3	21.1	20.0	19.4
2017	20.8	20.7	19.3	20.8	19.6	19.5	18.8	18.0	17.6	16.2	15.7	16.7	18.6
2018	17.1	17.0	16.5	16.5	16.1	17.3	17.2	17.3	17.1	17.4	17.7	16.6	17.0
2019	16.2	16.6	16.3	18.3	18.7	18.7	17.7	18.2	19.0	19.0	21.0	20.8	18.4

Figure 50: Average Committed Youth LOS Trendline Analysis

All Regions Committed AVERAGE LOS YTD Analysis													
	Q1			Q2			Q3			Q4			YTD Average
	Jan	Feb	Mar	Apr	May	Jun	Jul	Aug	Sep	Oct	Nov	Dec	
2015	468.6	452.2	456.0	458.6	451.5	469.0	473.9	468.6	464.2	450.9	440.4	457.9	459.3
2016	455.9	464.5	481.5	487.8	497.5	490.1	472.2	472.9	450.6	456.8	472.9	471.1	472.8
2017	466.5	469.1	450.3	441.5	420.6	402.7	418.1	412.5	414.2	419.3	423.7	402.6	428.4
2018	397.3	391.1	390.5	406.2	431.4	439.8	454.3	442.5	460.9	473.5	474.6	462.4	435.4
2019	473.2	484.9	508.3	519.1	502.6	466.0	455.6	421.3	399.2	379.1	378.9	415.5	450.3



# Maine Department of Corrections 2019: Juvenile Division Overview

## Regional Metrics

### Region 1 Referrals

Figure 51: R1 Referrals (All and 1<sup>st</sup> Time)

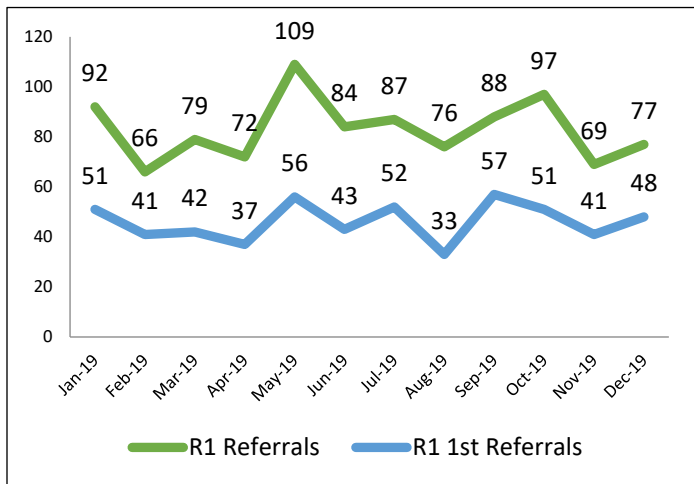


Figure 52: R1 All Referrals (by County)

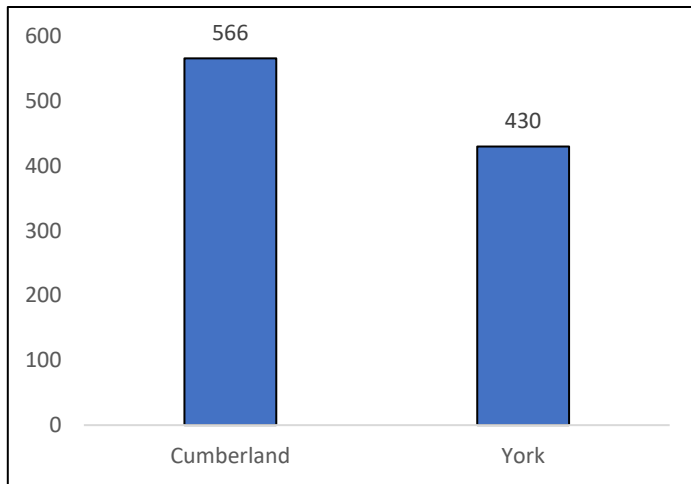


Figure 53: R1 All Referrals (by Offense Type)

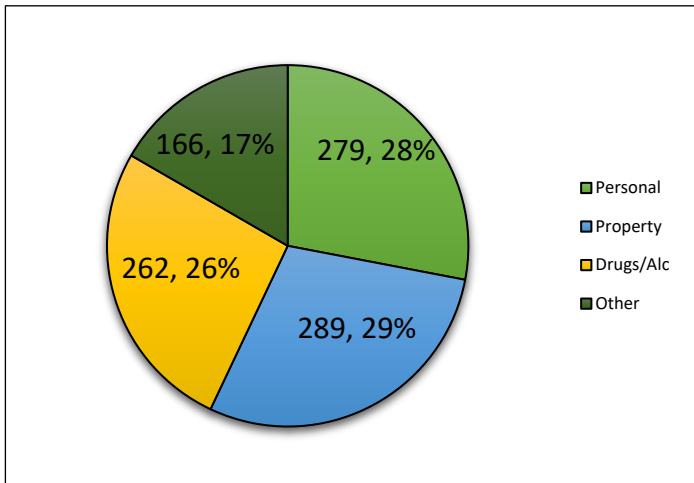
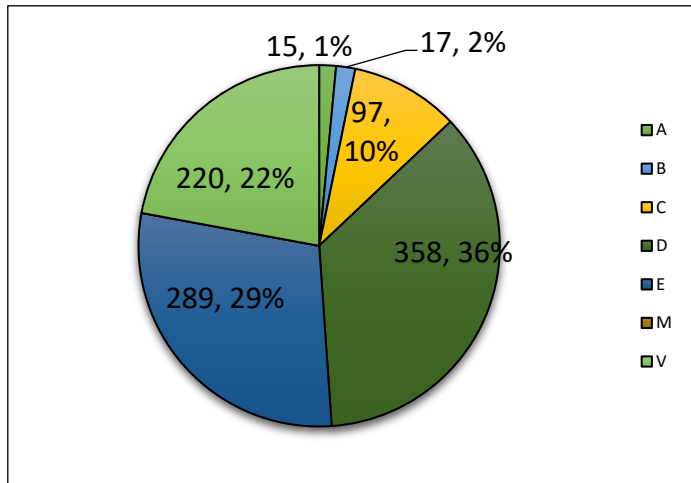


Figure 54: R1 All Referrals (by Offense Class)





# Maine Department of Corrections 2019: Juvenile Division Overview

## Region 1 Diversions

Figure 55: R1 Diversions Overtime\*

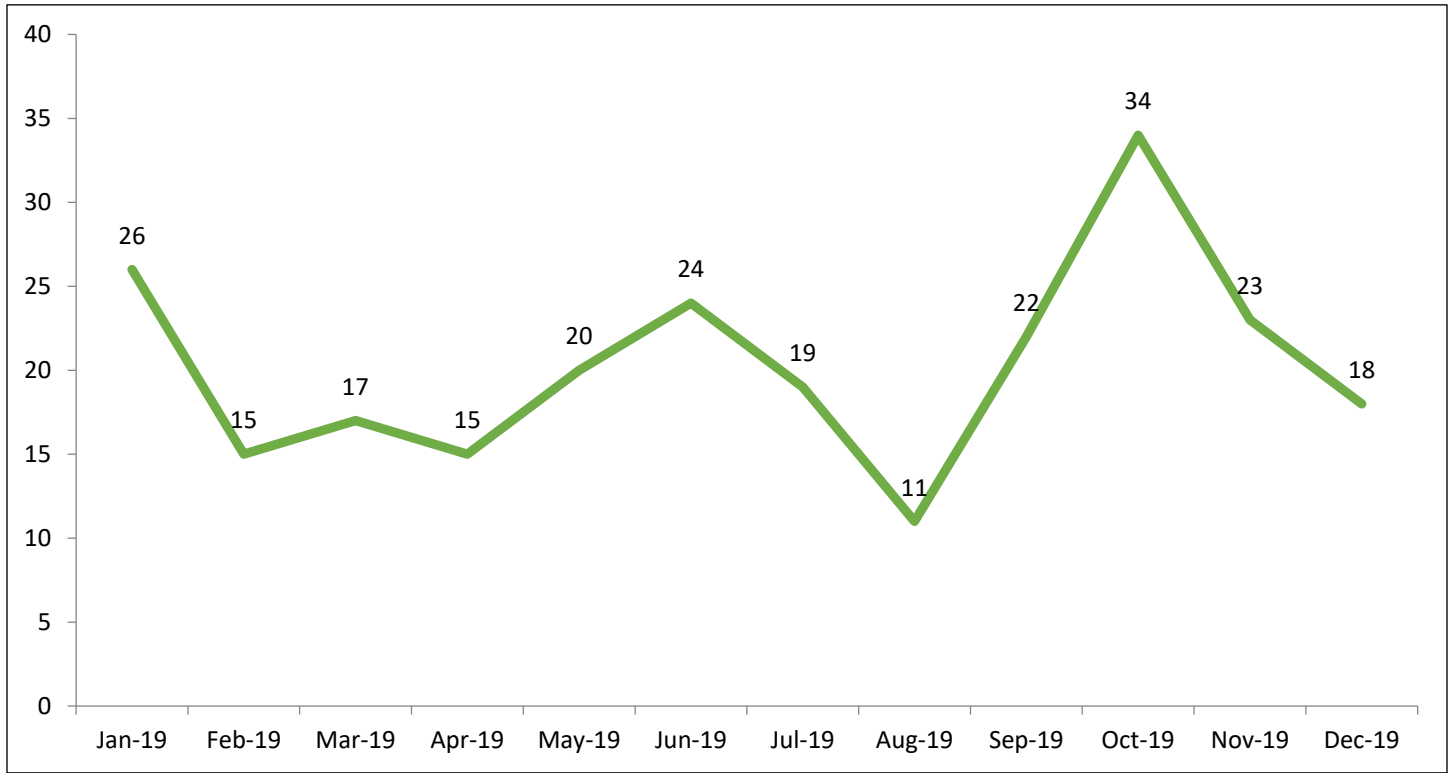
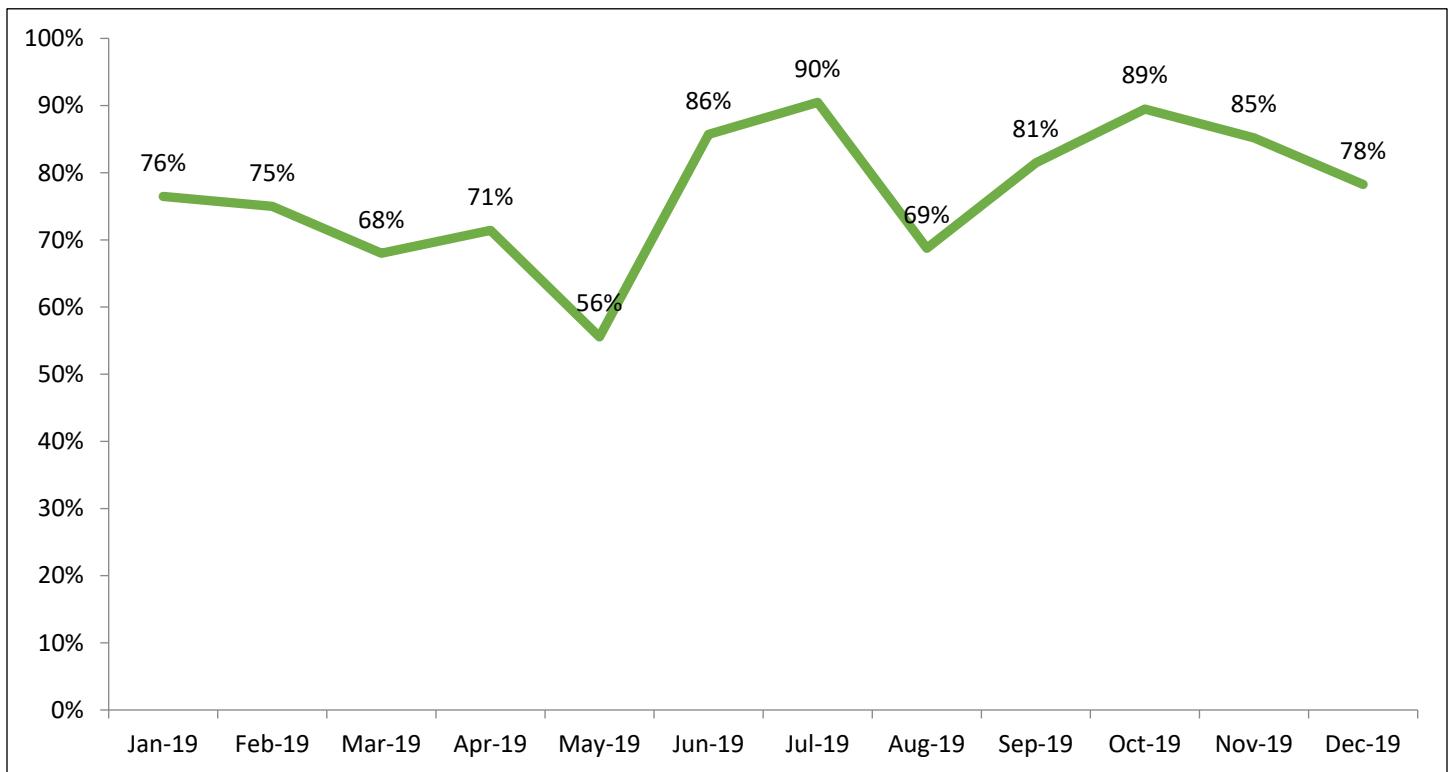


Figure 56: R1 Diversion Rate Overtime\*



\*Counts for diversion and diversion rates are for 1<sup>st</sup> time referrals only.



# Maine Department of Corrections 2019: Juvenile Division Overview

Figure 57: R1 Diversion Rate (by Gender)

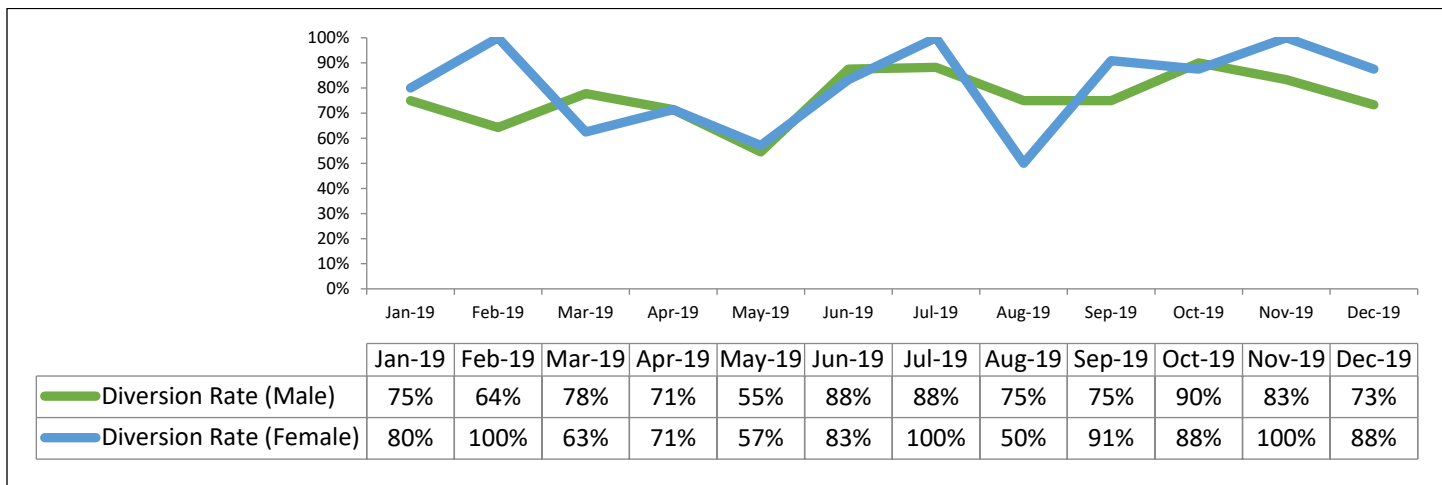
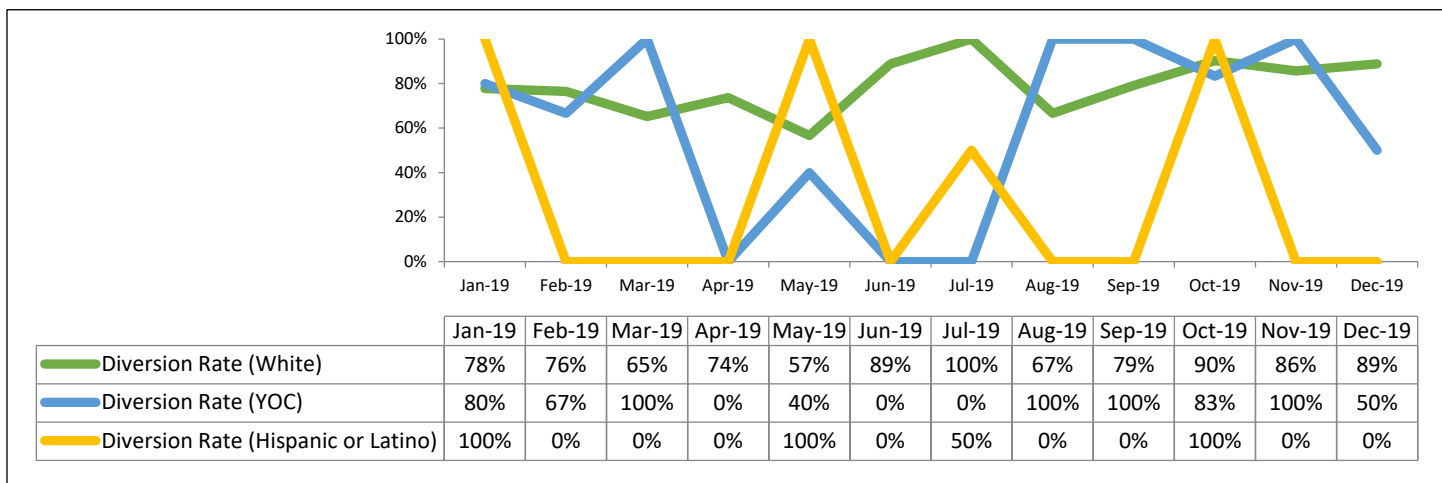
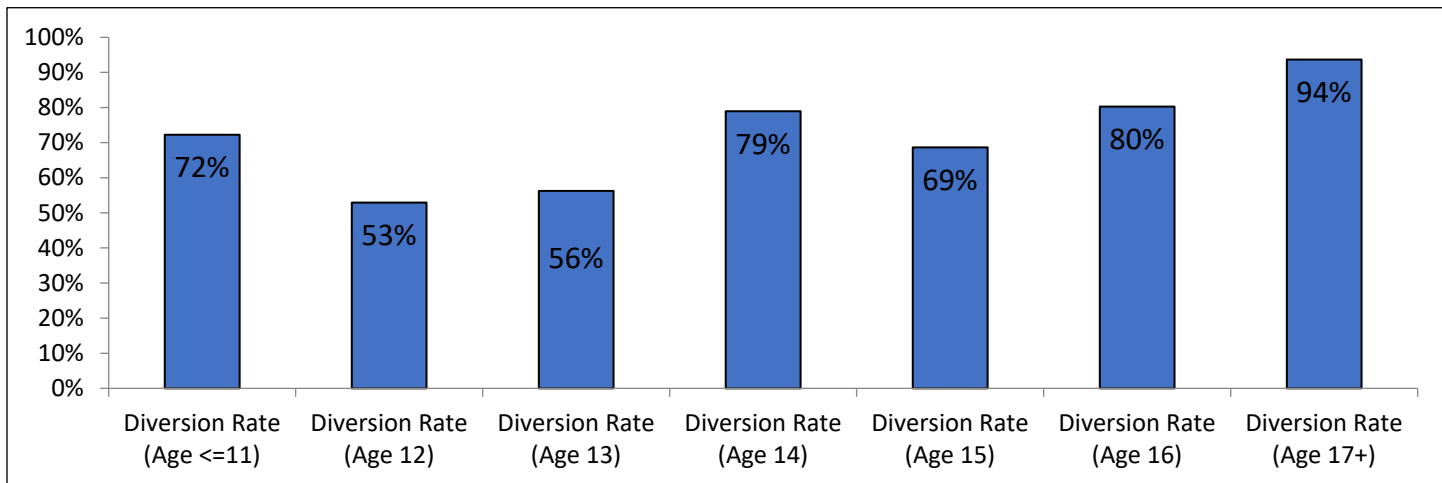


Figure 58: R1 Diversion Rate (by Race/Ethnicity)\*



\*For the months with 0% diversion it implies no youth in this category were divertible.

Figure 59: R1 Diversion Rate (by Age)





# Maine Department of Corrections 2019: Juvenile Division Overview

## Region 1 Probation

Figure 60: R1 Probation Tables Over Time

R1 Probation Population														
	Q1			Q2			Q3			Q4				
	Jan-19	Feb-19	Mar-19	Apr-19	May-19	Jun-19	Jul-19	Aug-19	Sep-19	Oct-19	Nov-19	Dec-19	YTD	Avg. Month
On Probation	61	53	48	48	48	41	37	39	40	37	41	40		
Started	1	1	5	3	4	2	5	3	2	5	3	3	<b>37</b>	<b>3.1</b>
Completed	4	3	2	0	5	4	1	2	3	1	1	2	<b>28</b>	<b>2.3</b>
Violations	3	3	2	4	5	3	1	1	5	1	3	0	<b>31</b>	<b>2.6</b>

Figure 61: R1 on Probation

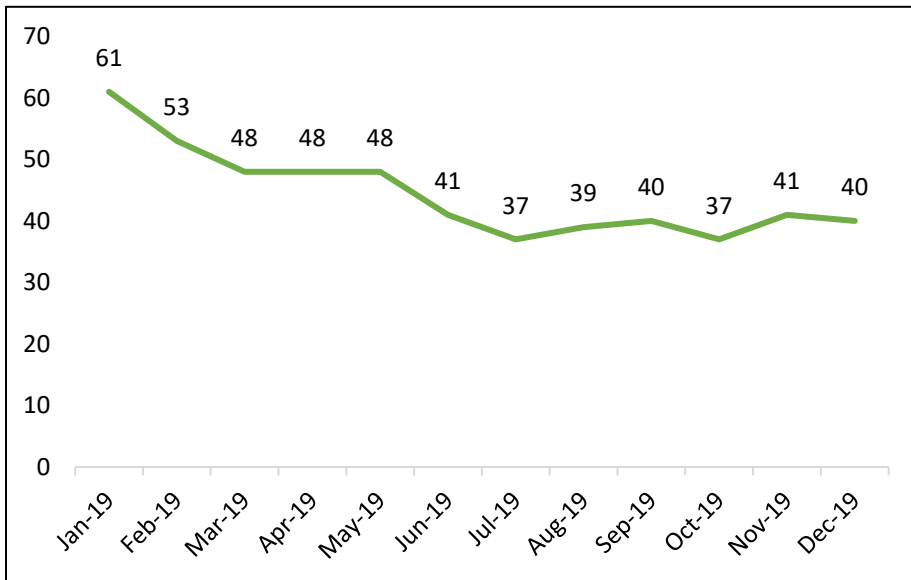
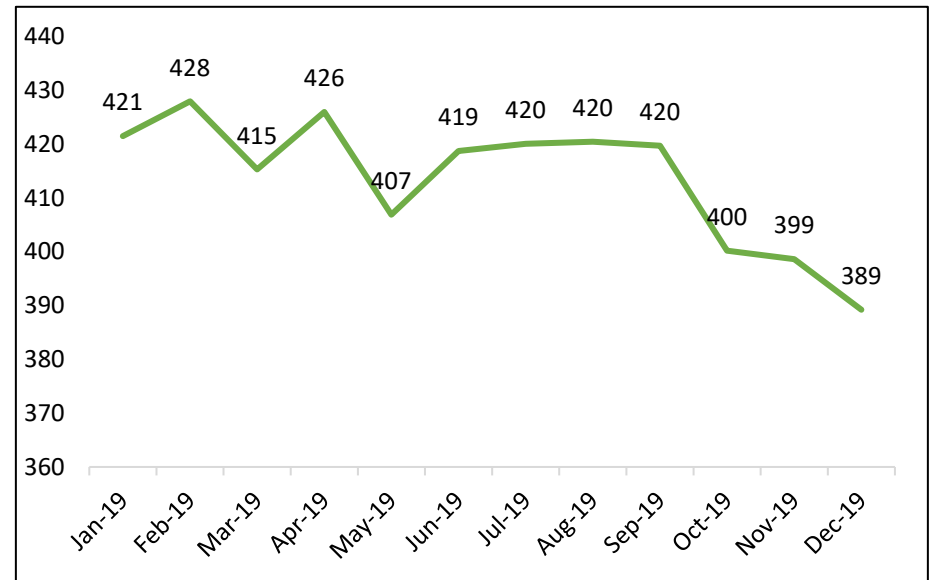


Figure 62: R1 Probation Average LOS (Days)





# Maine Department of Corrections 2019: Juvenile Division Overview

## Region 1 Admissions

Figure 63: R1 Shock Sentences Over Time

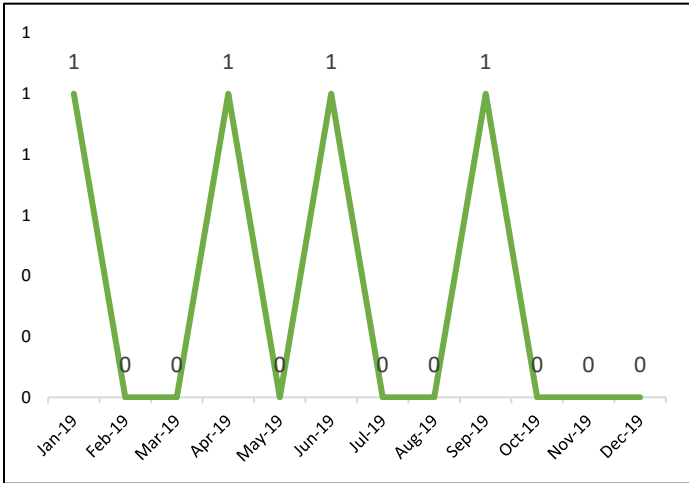


Figure 64: R1 Shock Sentences by Gender

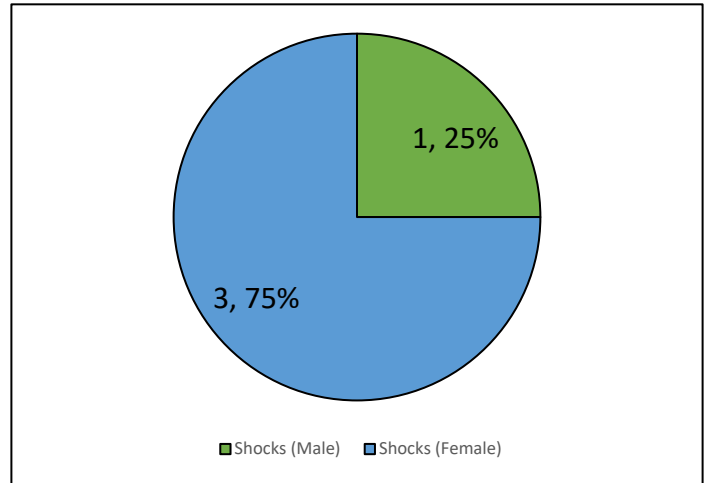


Figure 65: R1 Shock Sentences by Race/Ethnicity

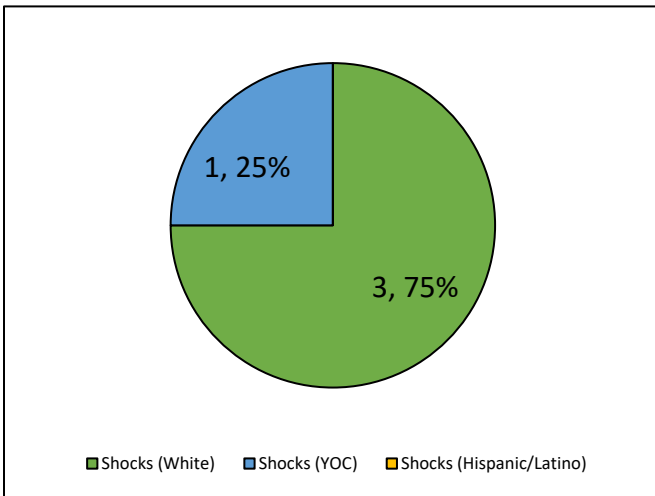
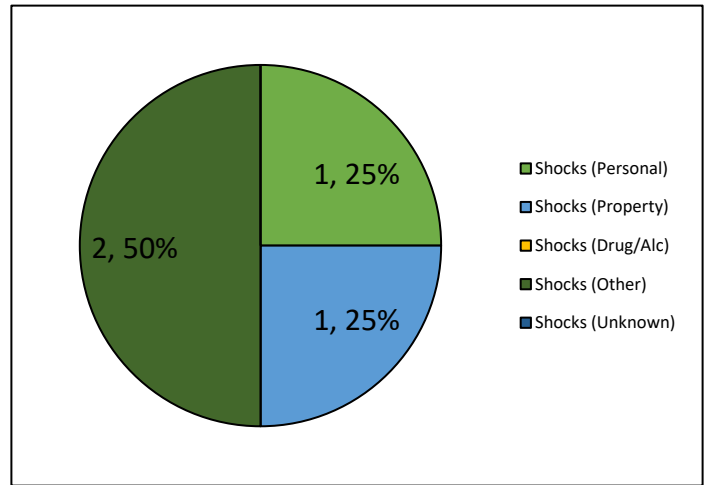


Figure 66: R1 Shock Sentences by Offense Type







# Maine Department of Corrections 2019: Juvenile Division Overview

Figure 67: R1 Detentions Over Time

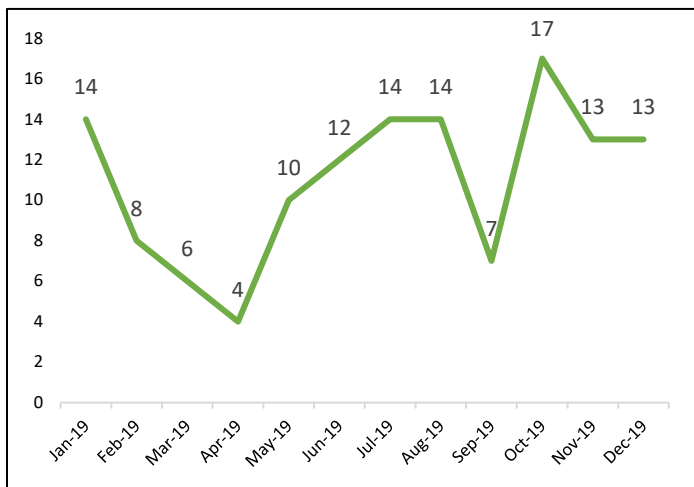


Figure 68: R1 Detentions by Gender

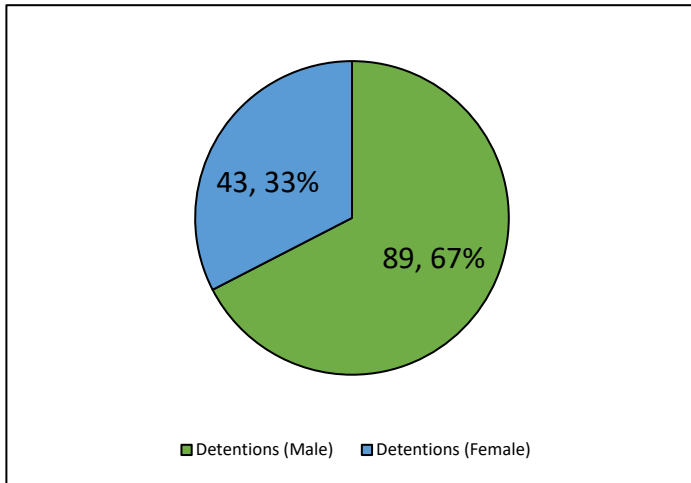


Figure 69: R1 Detentions by Race/Ethnicity

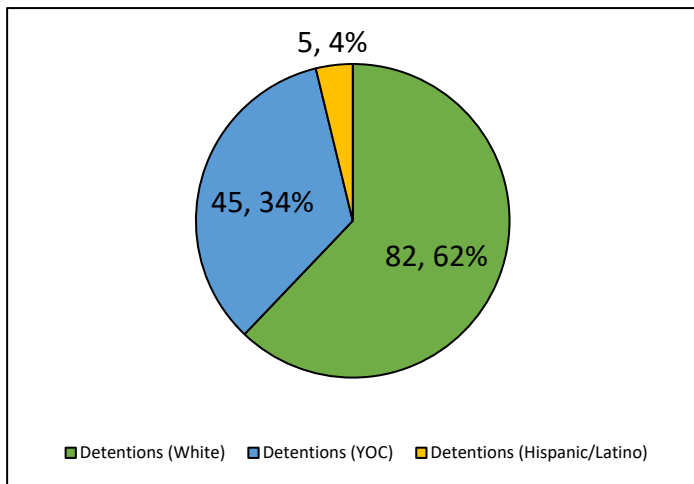
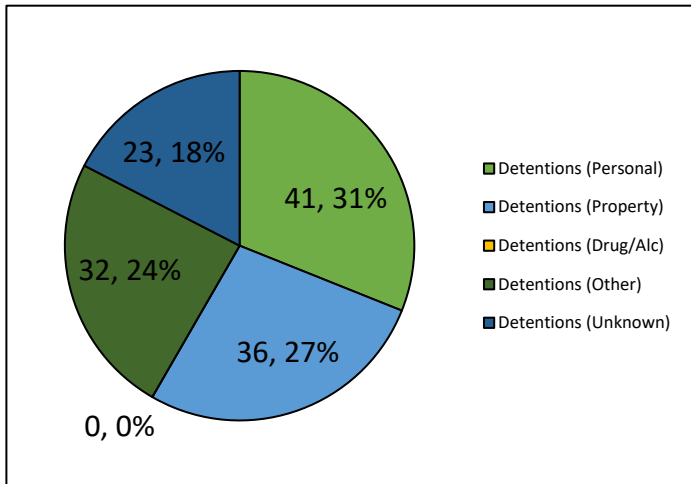


Figure 70: R1 Detentions by Offense Type





# Maine Department of Corrections 2019: Juvenile Division Overview

Figure 71: R1 Commitments Over Time

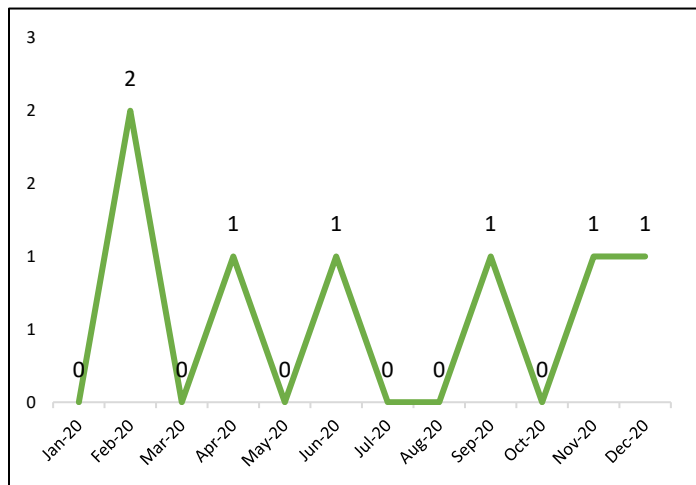


Figure 72: Commitments by Gender

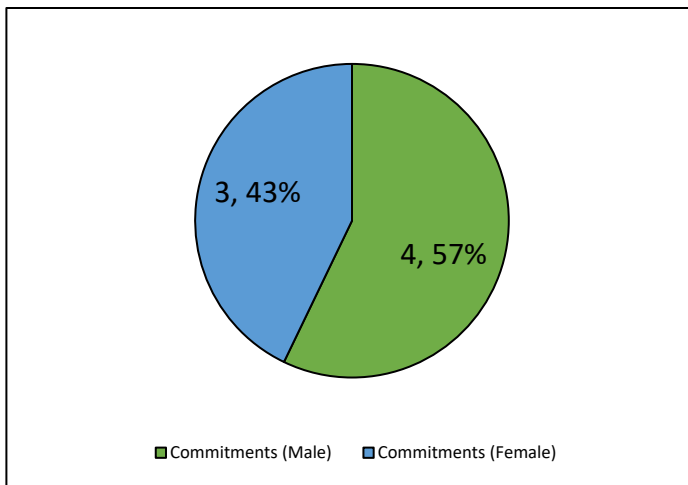


Figure 73: R1 Commitments by Race/Ethnicity

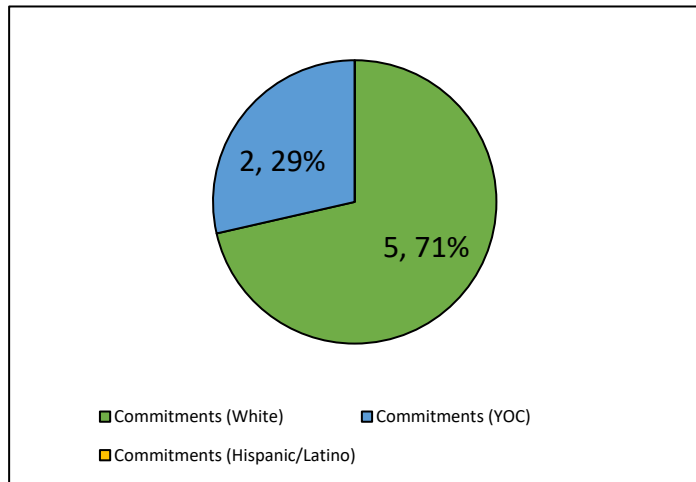
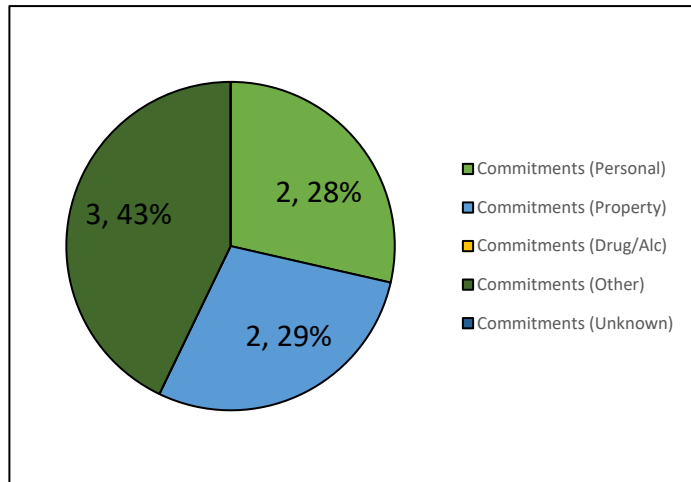


Figure 74: R1 Commitments by Offense Type





# Maine Department of Corrections 2019: Juvenile Division Overview

## Region 2 Referrals

Figure 75: R2 Referrals (All and 1<sup>st</sup> Time)

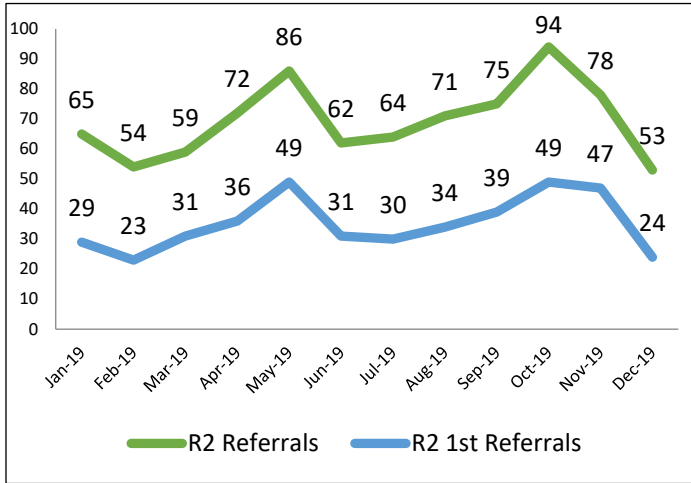


Figure 76: R2 All Referrals (by County)

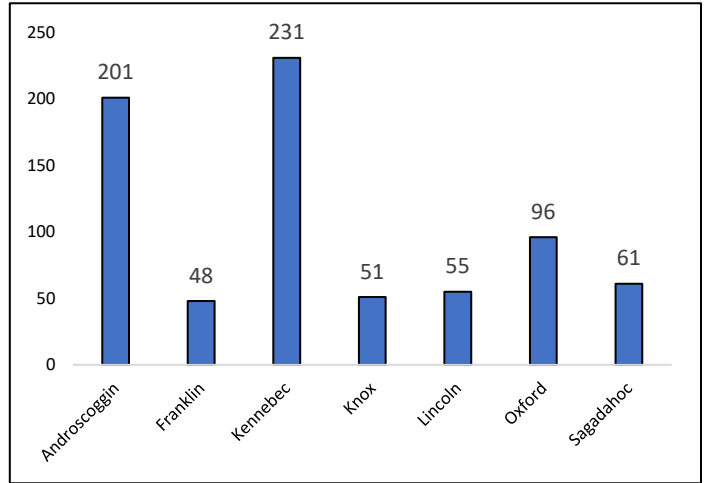


Figure 77: R2 All Referrals (by Offense Type)

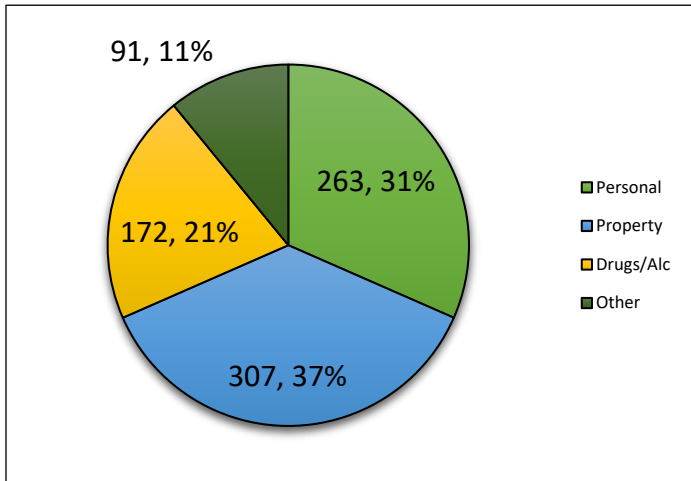
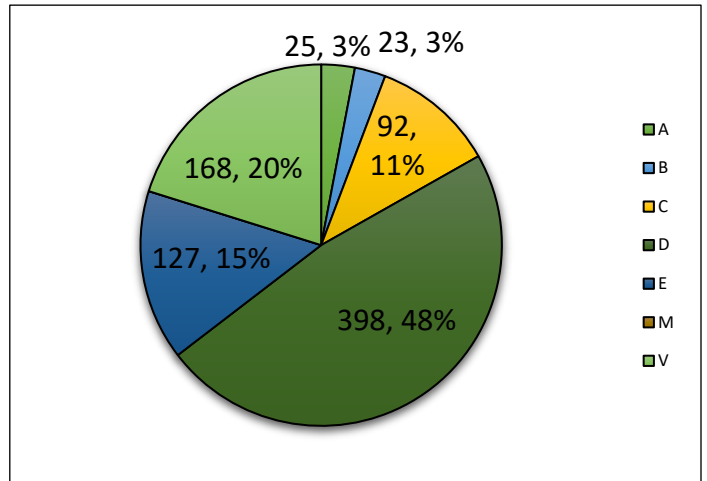


Figure 78: R2 All Referrals (by Offense Class)





# Maine Department of Corrections 2019: Juvenile Division Overview

## Region 2 Diversions

Figure 79: R2 Diversions Overtime\*

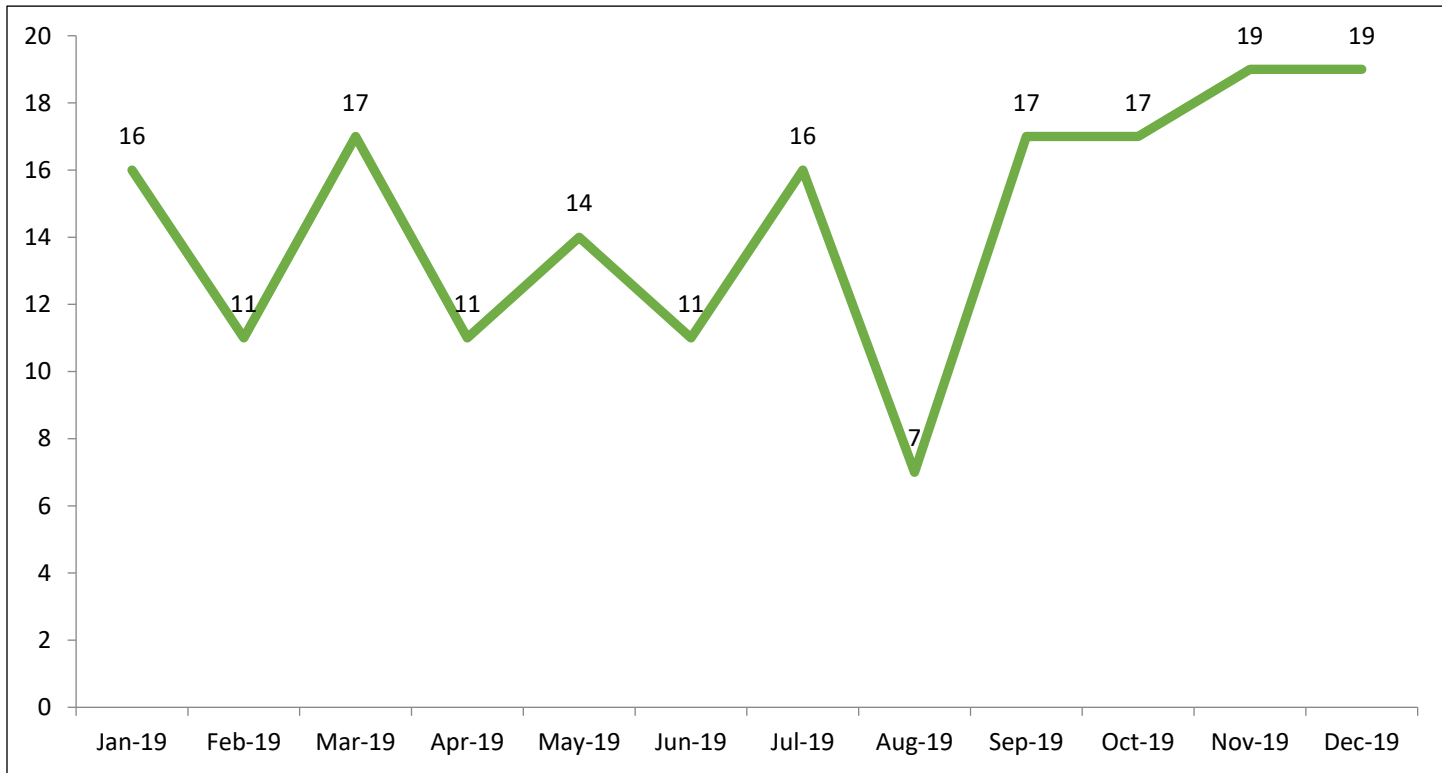
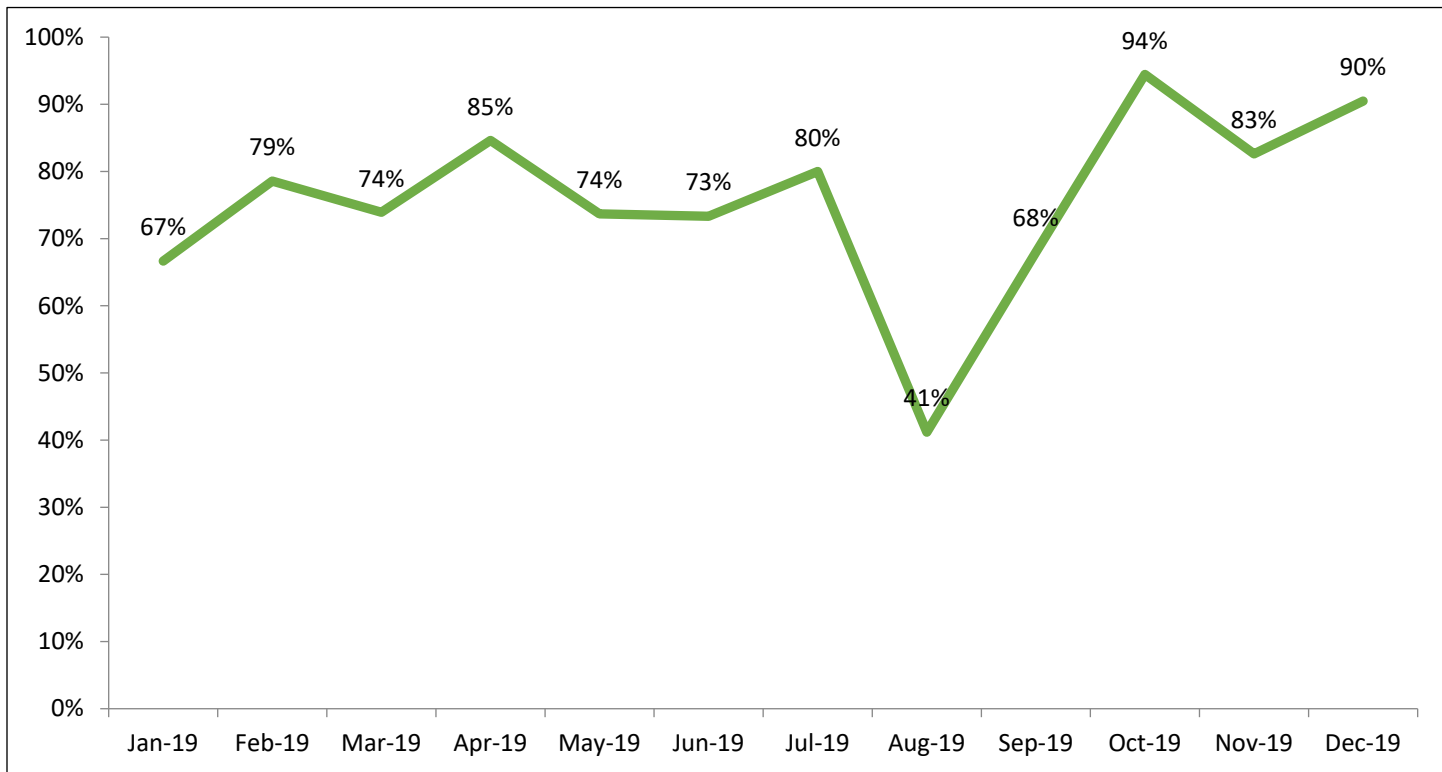


Figure 80: R2 Diversion Rate Overtime\*



\*Counts for diversion and diversion rates are for 1<sup>st</sup> time referrals only.



# Maine Department of Corrections 2019: Juvenile Division Overview

Figure 81: R2 Diversion Rate (by Gender)

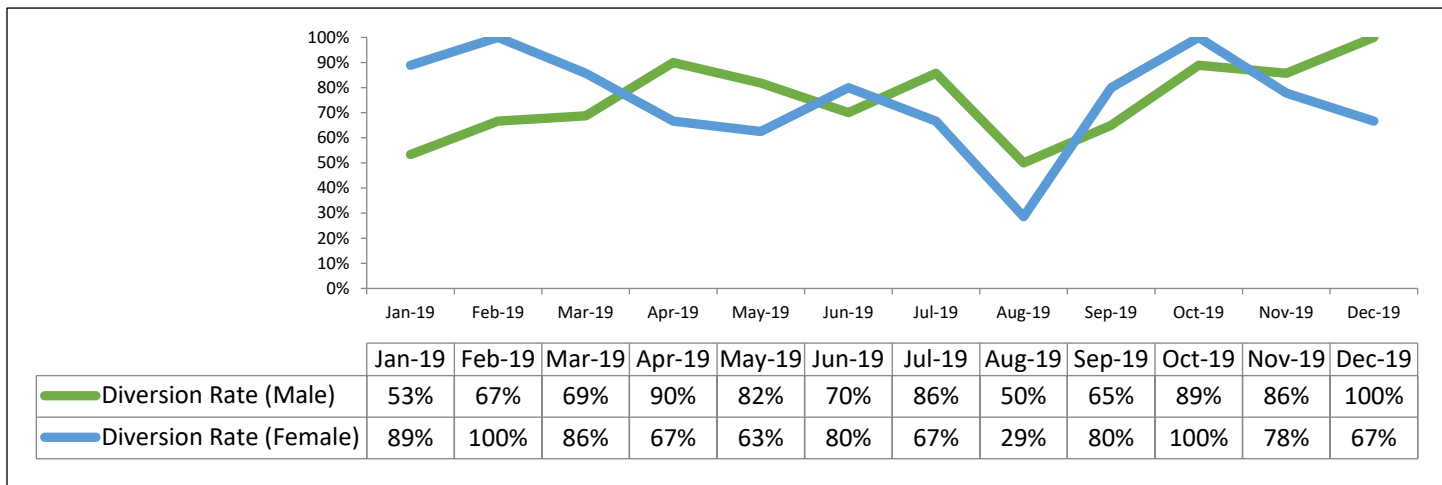
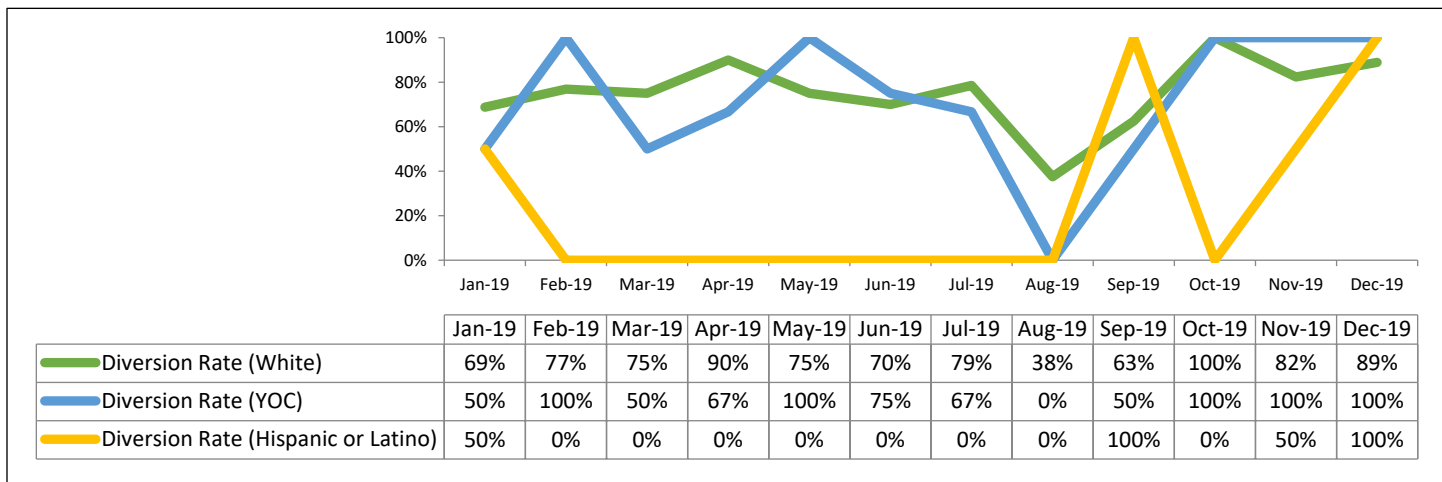
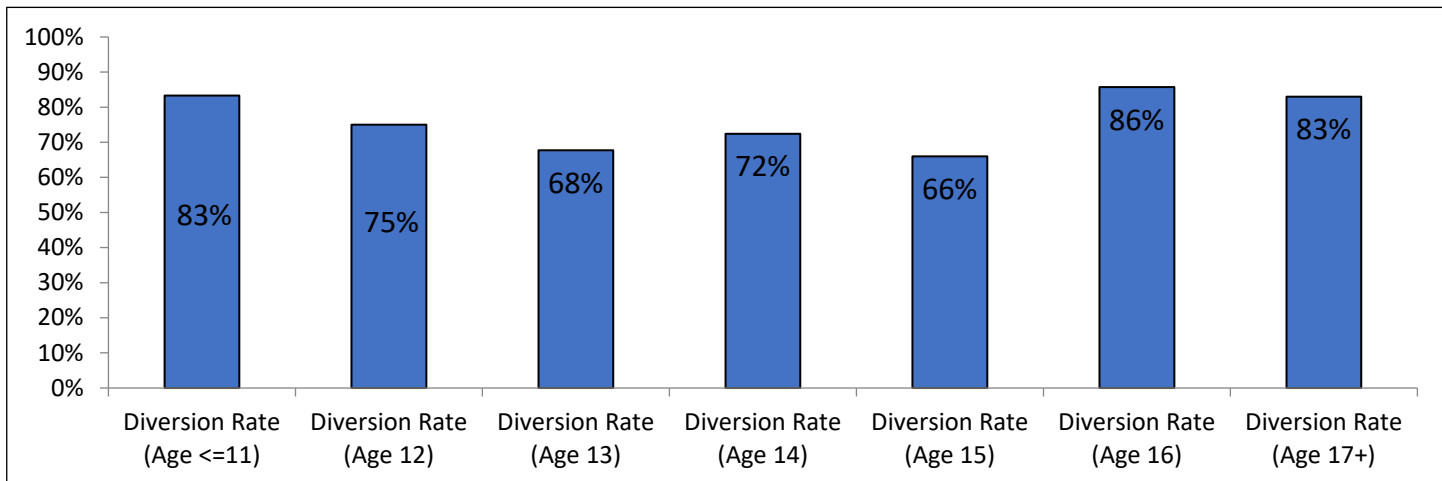


Figure 82: R2 Diversion Rate (by Race/Ethnicity)\*



\*For the months with 0% diversion it implies no youth in this category were divertible.

Figure 83: R2 Diversion Rate (by Age)





# Maine Department of Corrections 2019: Juvenile Division Overview

## Region 2 Probation

Figure 84: R2 Probation Tables Over Time

R2 Probation Population														
	Q1			Q2			Q3			Q4				
	Jan-19	Feb-19	Mar-19	Apr-19	May-19	Jun-19	Jul-19	Aug-19	Sep-19	Oct-19	Nov-19	Dec-19	YTD	Avg. Month
On Probation	68	65	60	53	51	54	53	61	59	58	57	55		
Started	5	3	1	2	7	3	12	2	5	1	7	2	50	4.2
Completed	4	5	2	4	2	2	1	3	1	1	7	2	34	2.8
Violations	3	5	5	2	4	3	2	1	2	2	1	0	30	2.5

Figure 85: R2 on Probation

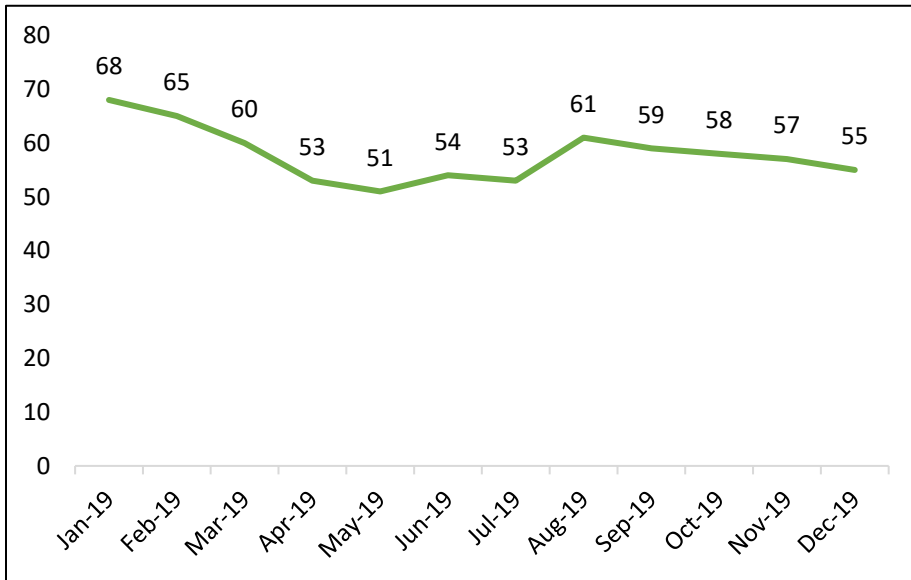
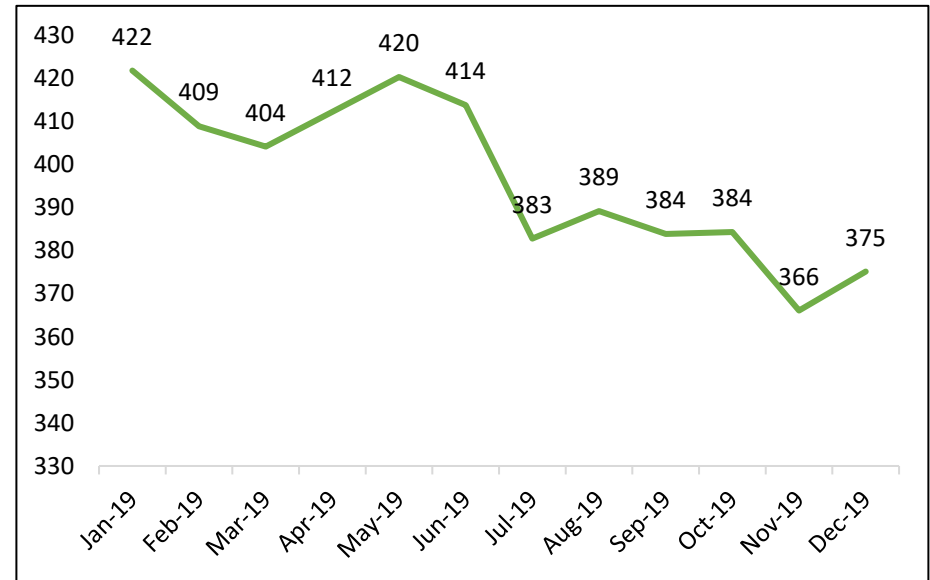


Figure 86: R2 Probation Average LOS (Days)





# Maine Department of Corrections 2019: Juvenile Division Overview

## Region 2 Admissions

Figure 87: R2 Shock Sentences Over Time

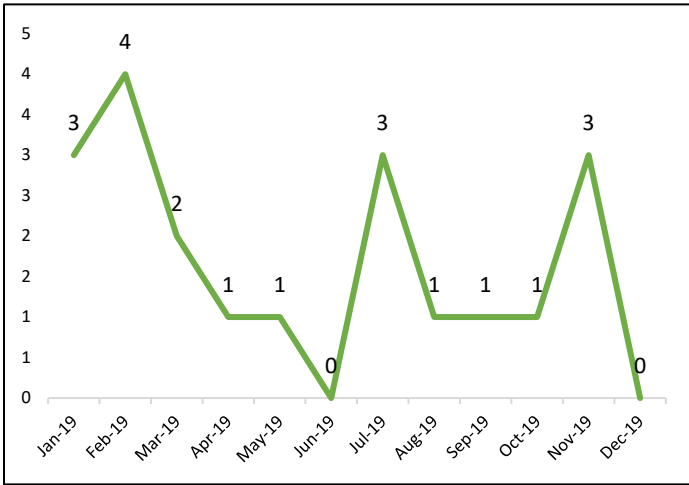


Figure 88: R2 Shock Sentences by Gender

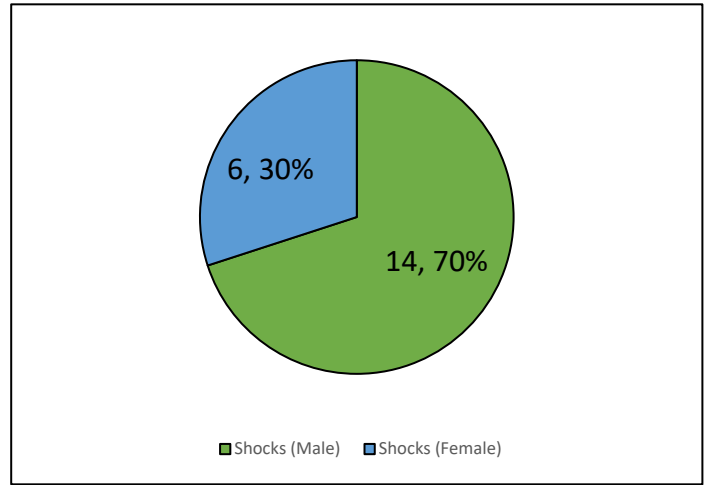


Figure 89: R2 Shock Sentences by Race/Ethnicity

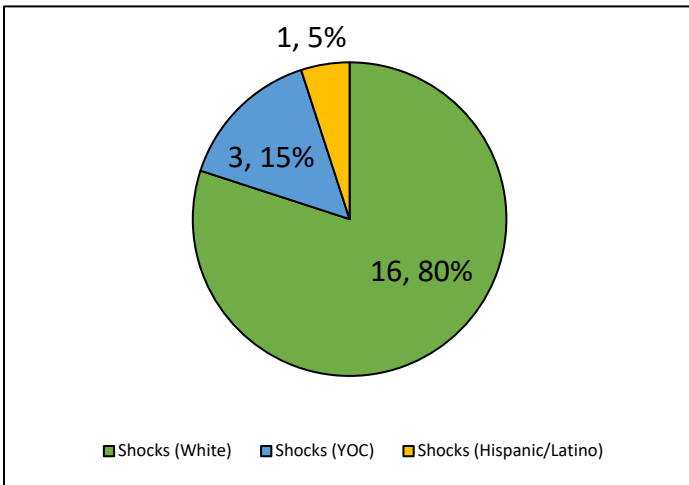
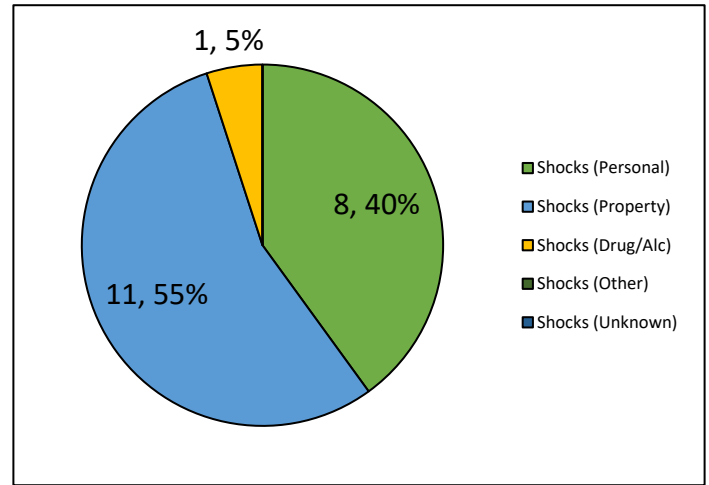


Figure 90: R2 Shock Sentences by Offense Type





# Maine Department of Corrections 2019: Juvenile Division Overview

Figure 91: R2 Detentions Over Time

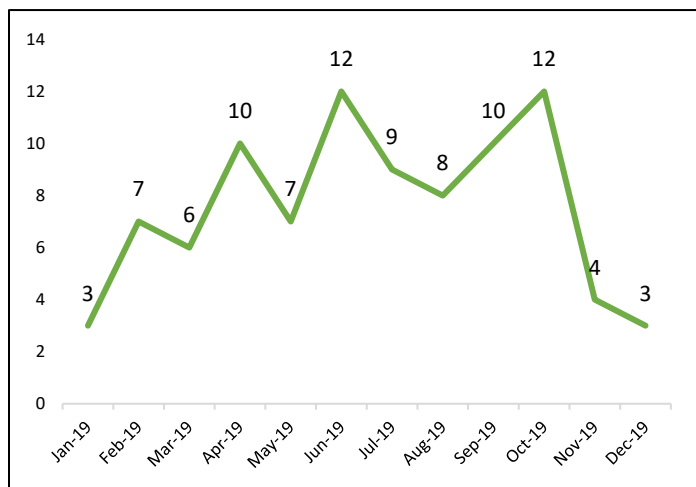


Figure 92: R2 Detentions by Gender

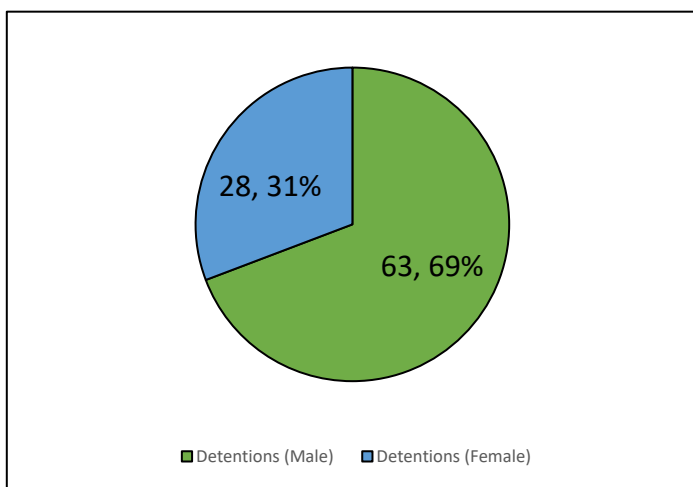


Figure 93: R2 Detentions by Race/Ethnicity

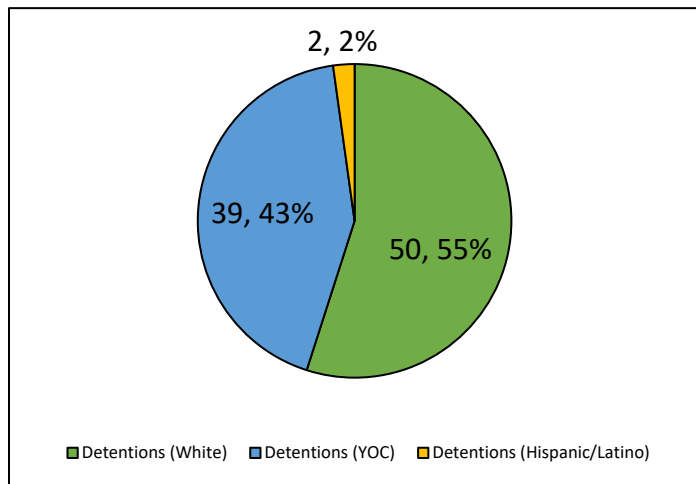
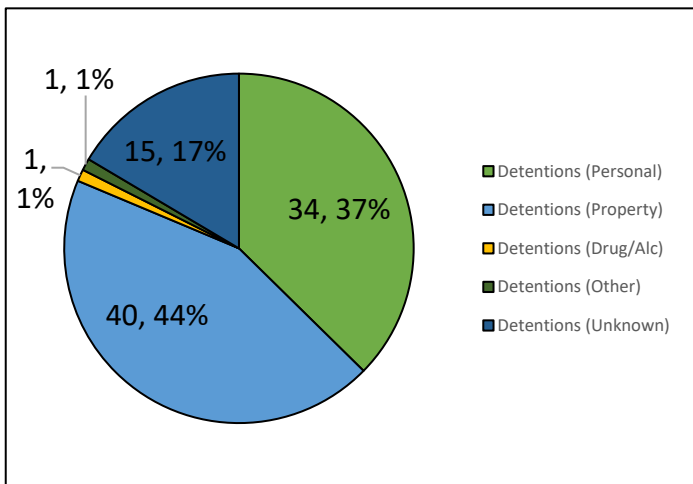


Figure 94: R2 Detentions by Offense Type







# Maine Department of Corrections 2019: Juvenile Division Overview

Figure 95: R2 Commitments Over Time

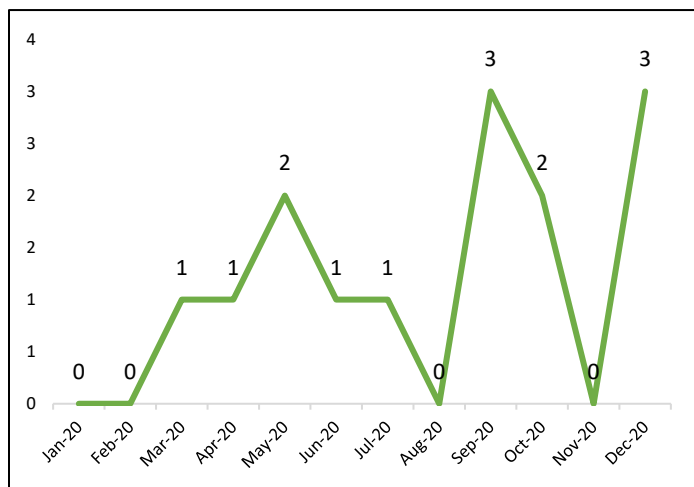


Figure 96: Commitments by Gender

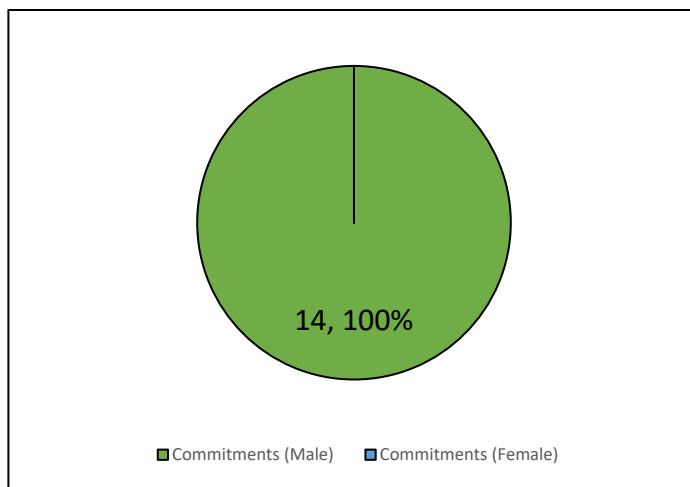


Figure 97: R2 Commitments by Race/Ethnicity

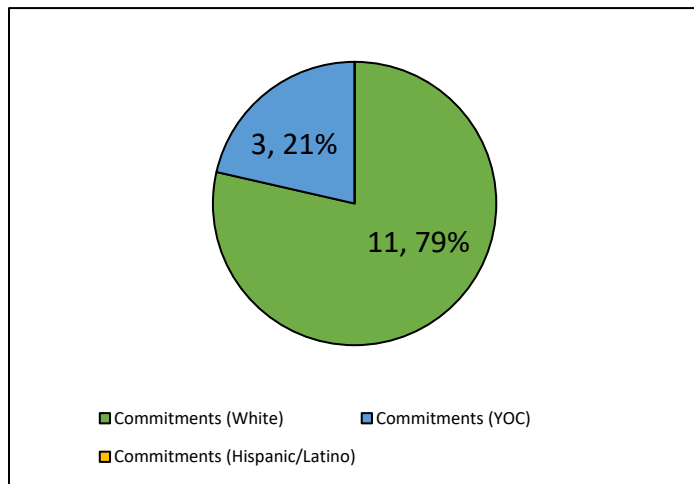
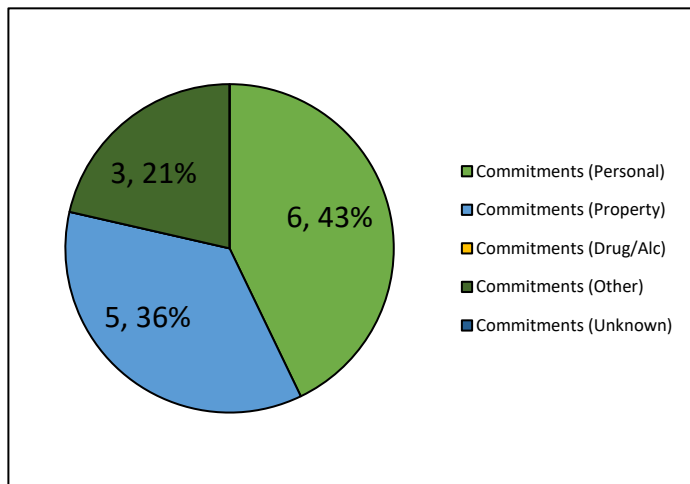


Figure 98: R2 Commitments by Offense Type





# Maine Department of Corrections 2019: Juvenile Division Overview

## Region 3 Referrals

Figure 99: R3 Referrals (All and 1<sup>st</sup> Time)

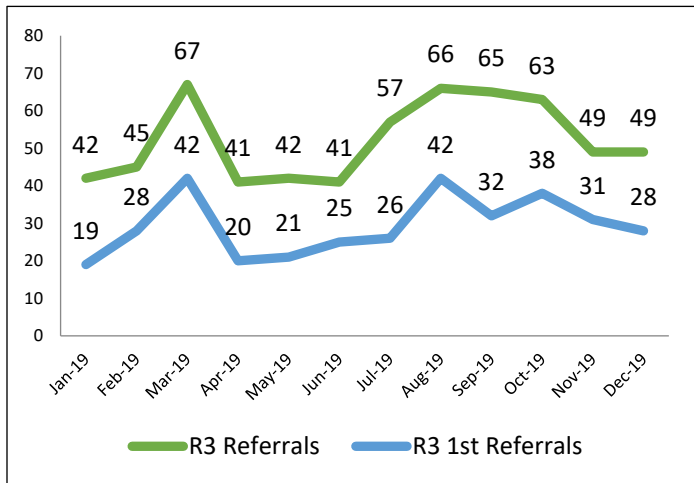


Figure 100: R3 All Referrals (by County)

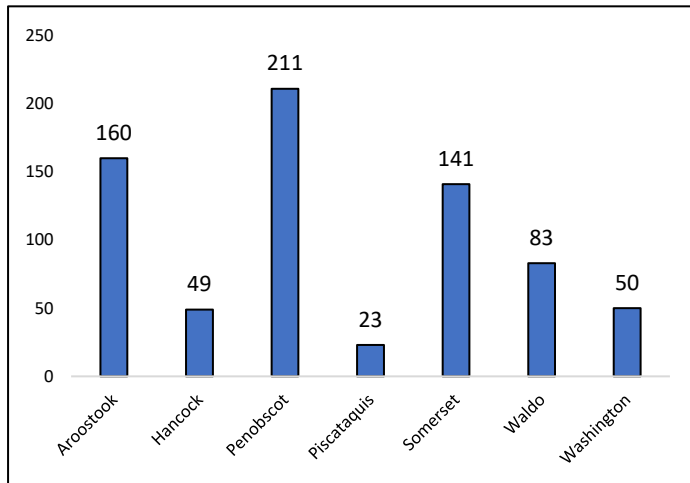


Figure 101: R3 All Referrals (by Offense Type)

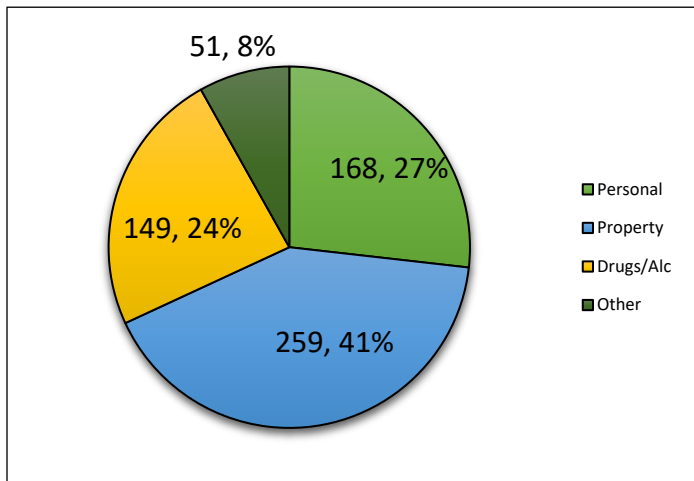
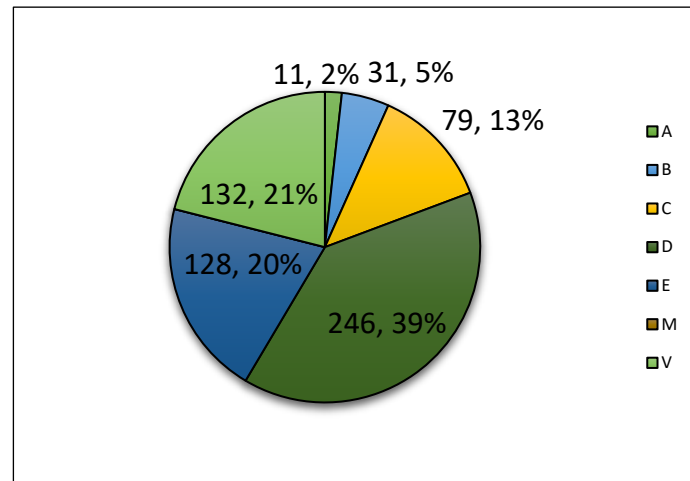


Figure 102: R3 All Referrals (by Offense Class)





# Maine Department of Corrections 2019: Juvenile Division Overview

## Region 3 Diversions

Figure 103: R3 Diversions Overtime\*

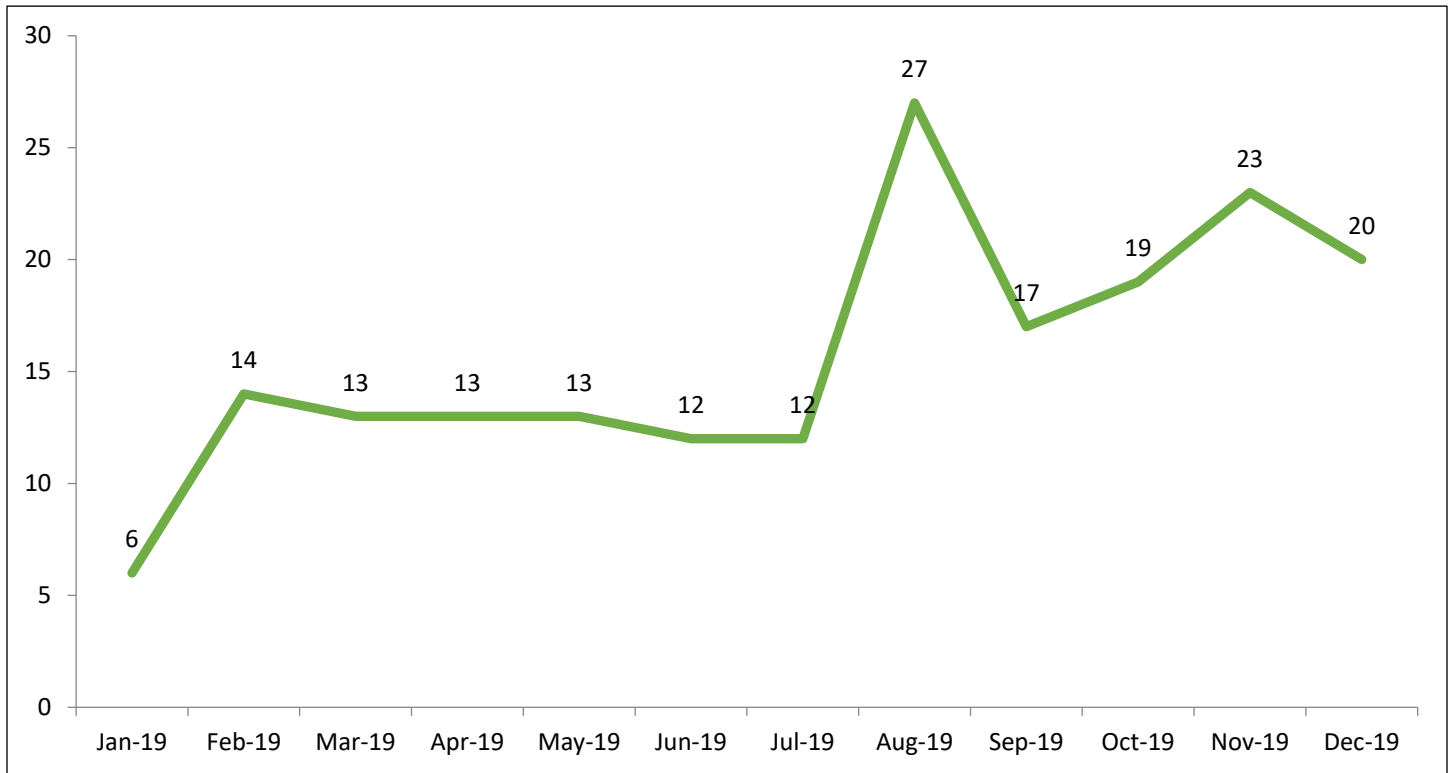
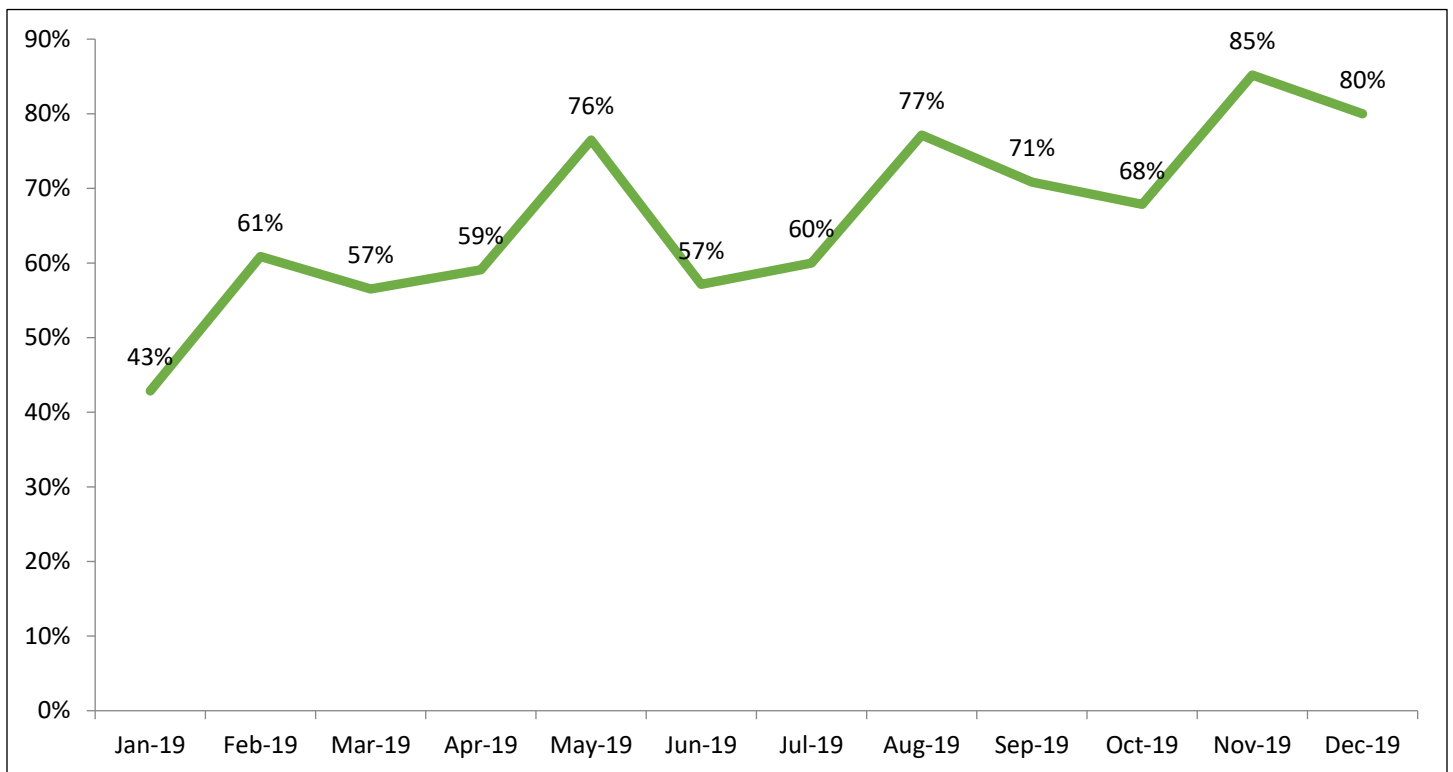


Figure 104: R3 Diversion Rate Overtime\*



\*Counts for diversion and diversion rates are for 1<sup>st</sup> time referrals only.



# Maine Department of Corrections 2019: Juvenile Division Overview

Figure 105: R3 Diversion Rate (by Gender)

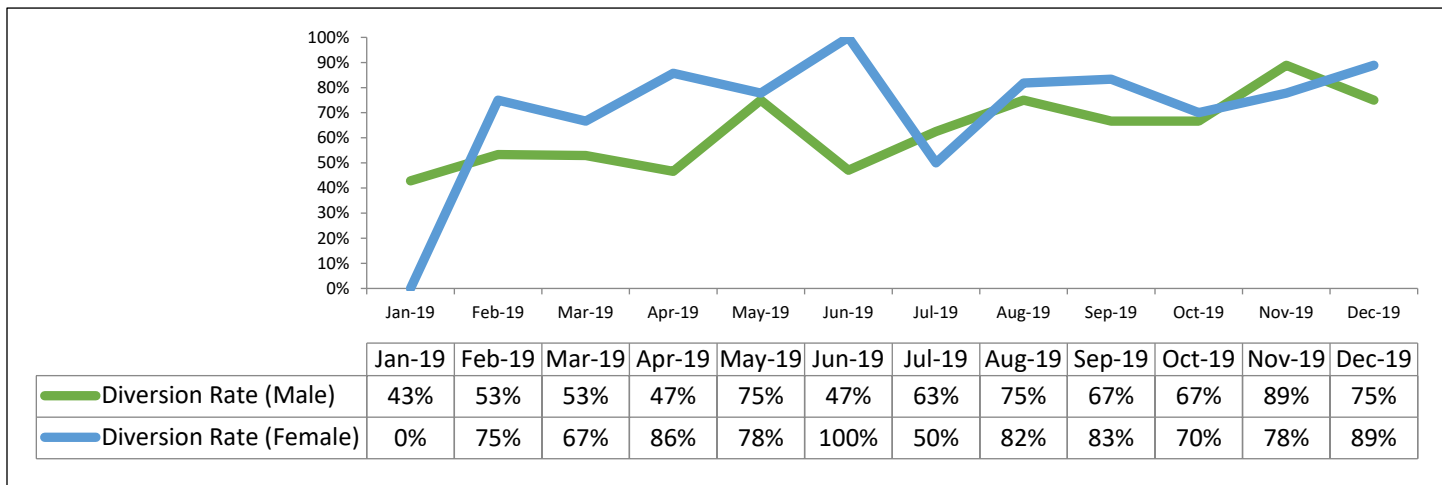
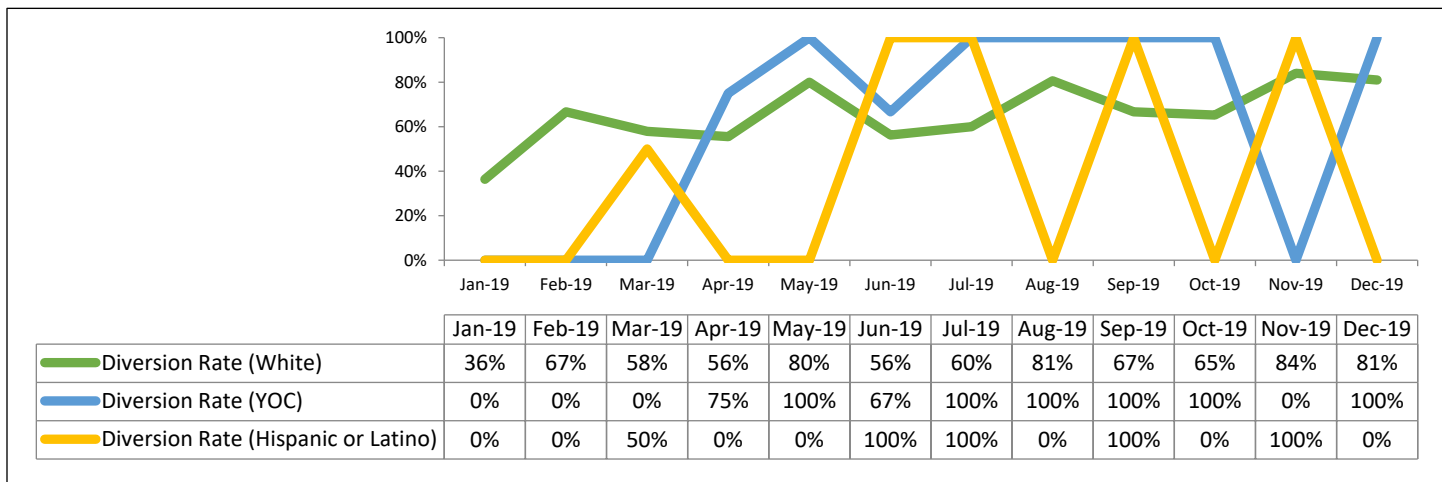
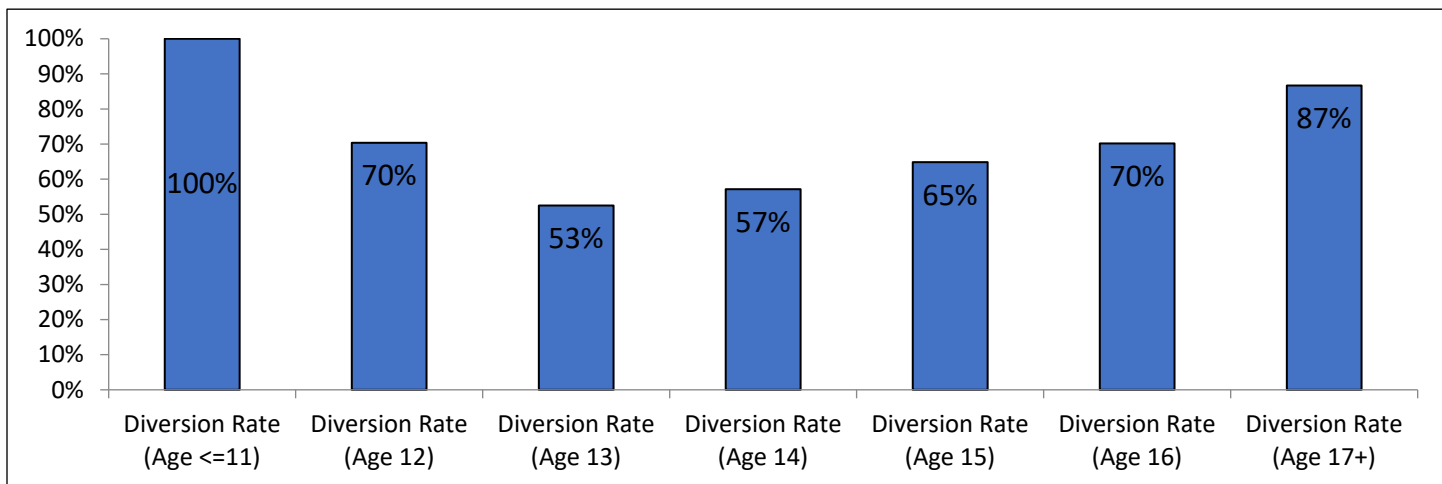


Figure 106: R3 Diversion Rate (by Race/Ethnicity)\*



\*For the months with 0% diversion it implies no youth in this category were divertible.

Figure 107: R3 Diversion Rate (by Age)





# Maine Department of Corrections 2019: Juvenile Division Overview

## Region 3 Probation

Figure 108: R3 Probation Tables Over Time

R3 Probation Population														
	Q1			Q2			Q3			Q4			YTD	Avg. Month
	Jan-19	Feb-19	Mar-19	Apr-19	May-19	Jun-19	Jul-19	Aug-19	Sep-19	Oct-19	Nov-19	Dec-19		
On Probation	68	68	71	67	64	61	63	58	55	53	54	52		
Started	7	7	5	2	6	6	3	1	2	5	3	7	54	4.5
Completed	6	2	7	3	2	2	7	1	1	0	4	4	39	3.3
Violations	3	7	4	5	4	2	1	1	2	3	1	2	35	2.9

Figure 109: R3 on Probation

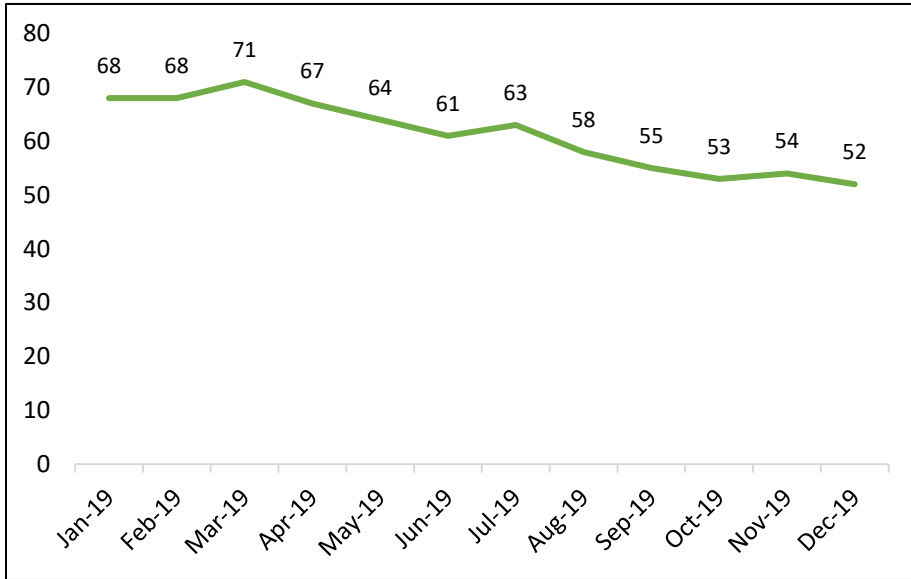
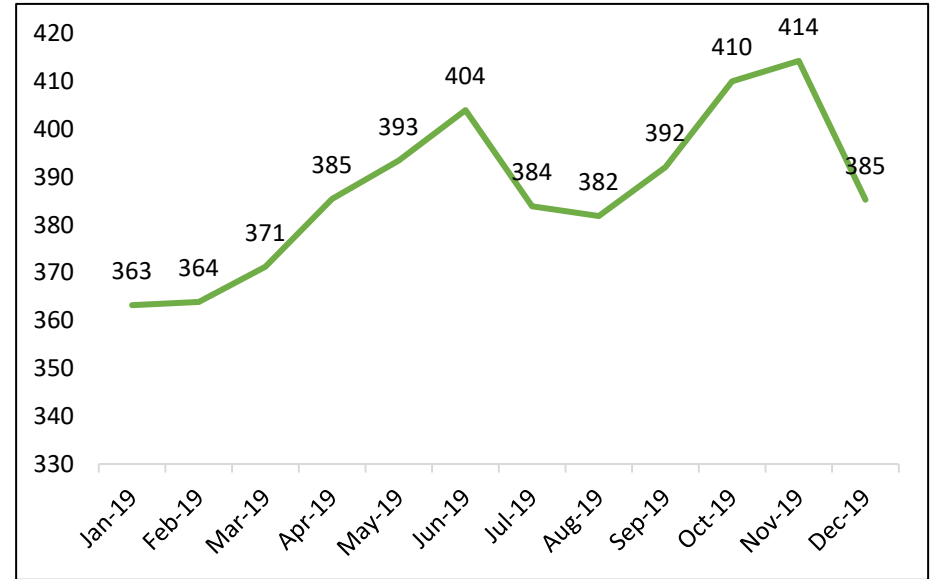


Figure 110: R3 Probation Average LOS (Days)





# Maine Department of Corrections 2019: Juvenile Division Overview

## Region 3 Admissions

Figure 111: R3 Shock Sentences Over Time

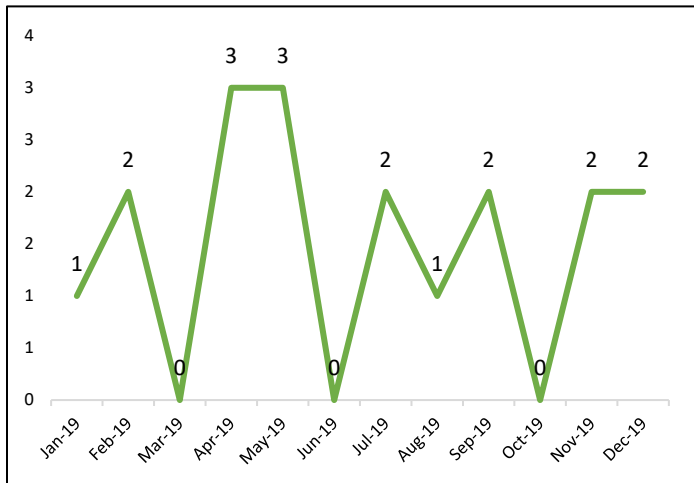


Figure 112: R3 Shock Sentences by Gender

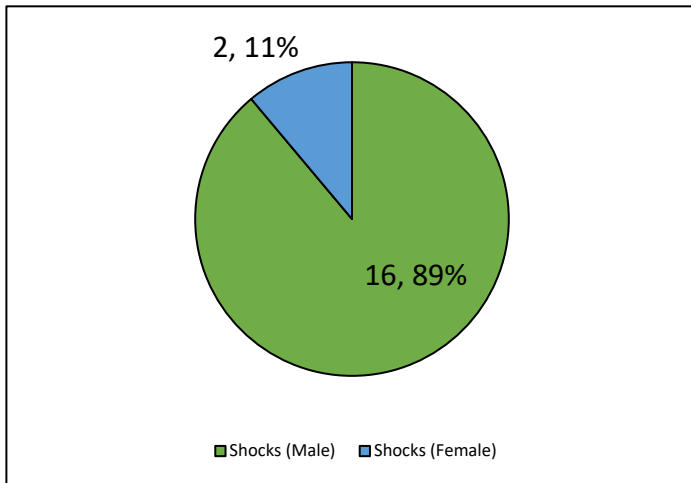


Figure 113: R3 Shock Sentences by Race/Ethnicity

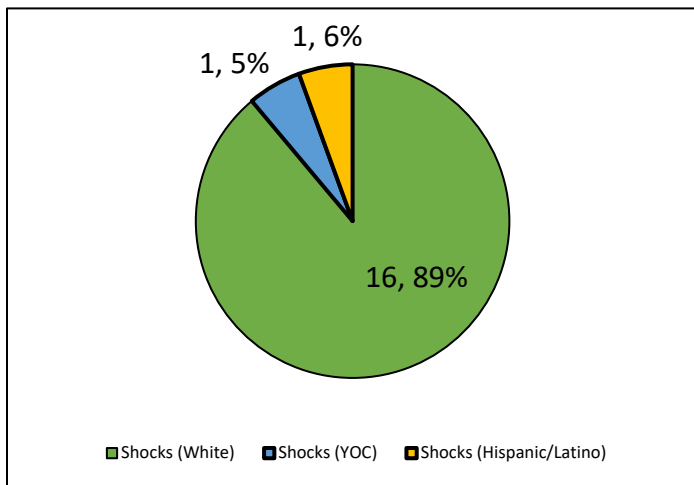
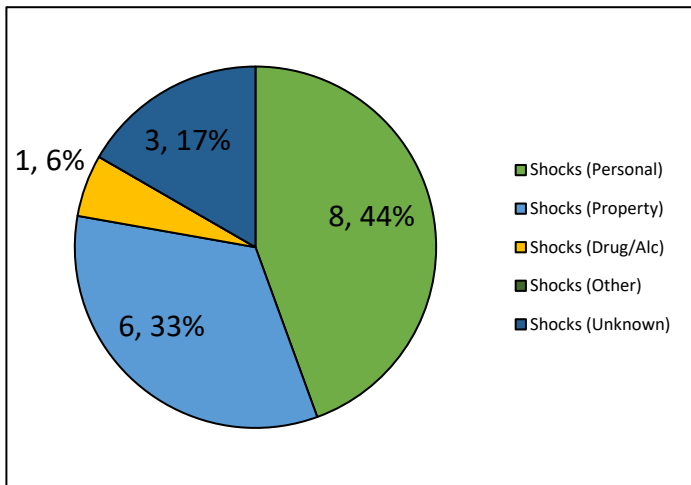


Figure 114: R3 Shock Sentences by Offense Type





# Maine Department of Corrections 2019: Juvenile Division Overview

Figure 115: R3 Detentions Over Time

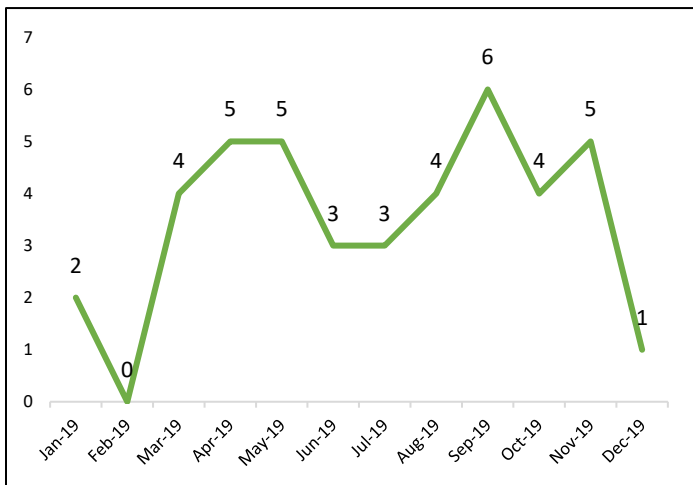


Figure 116: R3 Detentions by Gender

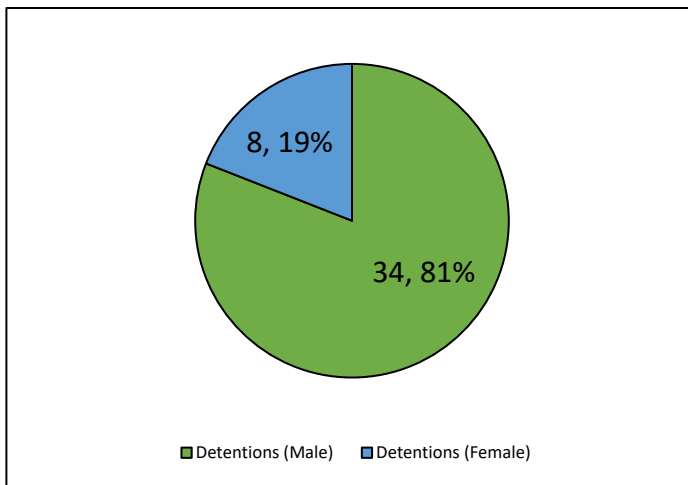


Figure 117: R3 Detentions by Race/Ethnicity

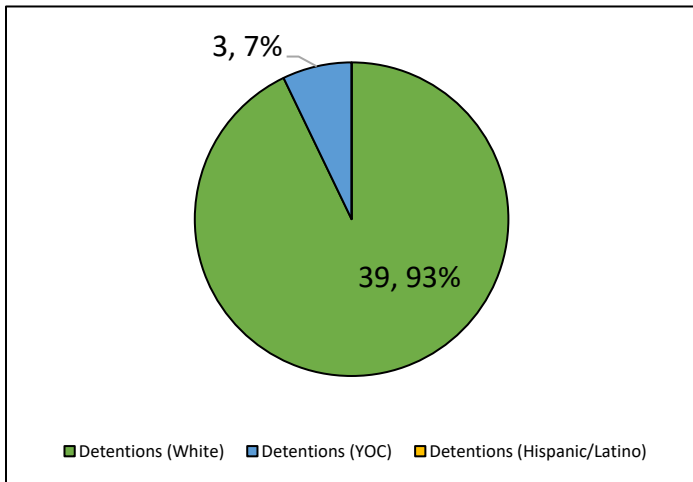
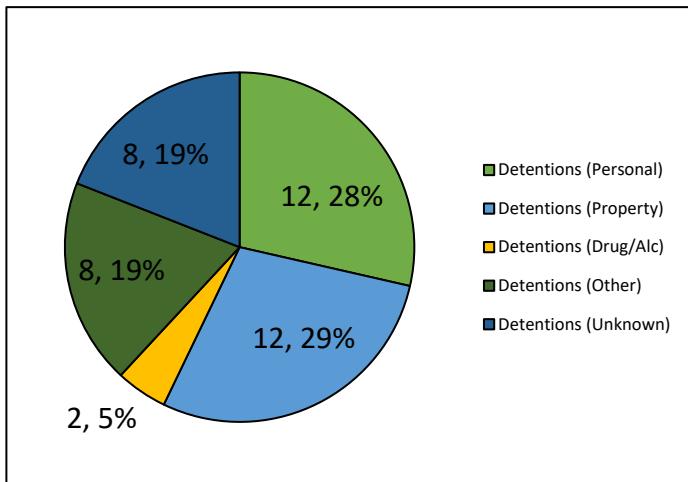


Figure 118: R3 Detentions by Offense Type





# Maine Department of Corrections 2019: Juvenile Division Overview

Figure 119: R3 Commitments Over Time

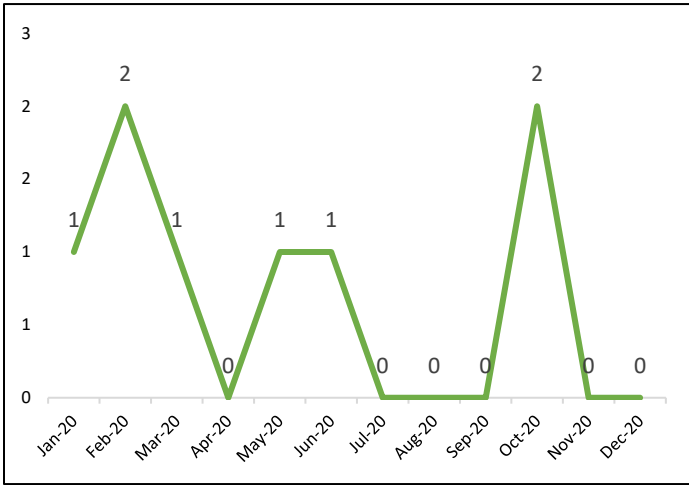


Figure 120: Commitments by Gender

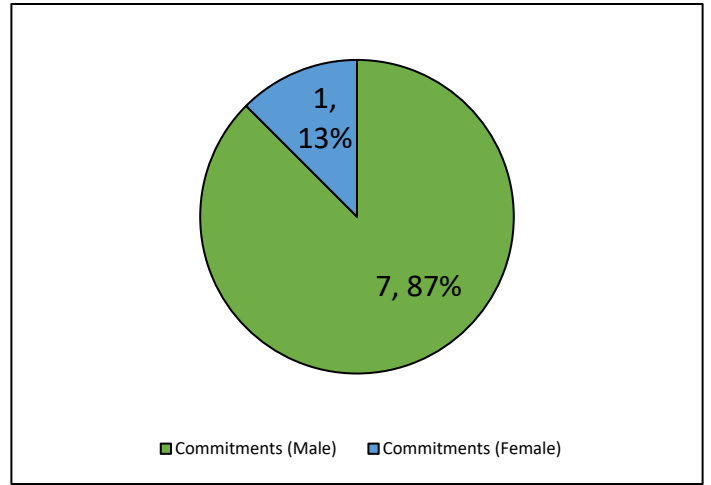


Figure 121: R3 Commitments by Race/Ethnicity

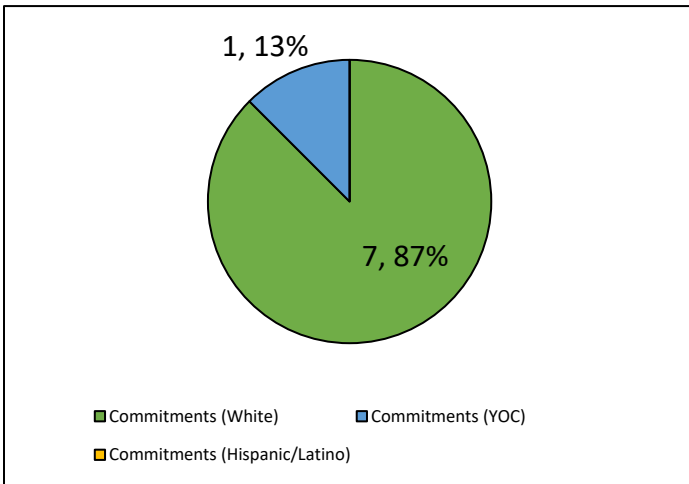


Figure 122: R3 Commitments by Offense Type

