



2021

Juvenile Division Overview



MDOC Juvenile Data

This document contains a snapshot of the following community metrics: referrals, diversions, probations, and facility admissions.

Christine Thibeault, Associate Commissioner
Maine Department of Corrections
25 Tyson Drive
State House Station 111
Augusta Maine 04333-0111

12/31/2021



Maine Department of Corrections 2021: Juvenile Division Overview

Contents

- Letter from Associate Commissioner 3
- Juvenile Court Process 4
- Community Metrics 5
 - Statewide Referrals 5
 - Statewide Diversion 12
 - Statewide Probation 14
 - Statewide Admissions 15
 - Statewide LOS Analysis 19
- Regional Metrics 20
 - Region 1 Referrals 20
 - Region 1 Diversions 21
 - Region 1 Probation 23
 - Region 1 Admissions 24
 - Region 2 Referrals 27
 - Region 2 Diversions 28
 - Region 2 Probation 30
 - Region 2 Admissions 31
 - Region 3 Referrals 34
 - Region 3 Diversions 35
 - Region 3 Probation 37
 - Region 3 Admissions 38



Maine Department of Corrections 2021: Juvenile Division Overview

Letter from Associate Commissioner

Dear fellow Juvenile Justice Stakeholders,

The Maine Department of Corrections (MDOC), Division of Juvenile Services is committed to reducing the use of institutional secure confinement by increasing the capacity and use of community-based programming and supports.

In the last five years, the Division of Juvenile Services has significantly reduced the use of secure confinement (Long Creek Youth Development Center) by strategically investing in community-based programming for justice involved youth. These investments target three major areas: Referral (preadjudication), Supervision (probation), and Commitment/Reentry.

The attached Juvenile Justice Overview Report provides statewide and regional metrics identifying the three major target areas listed above.

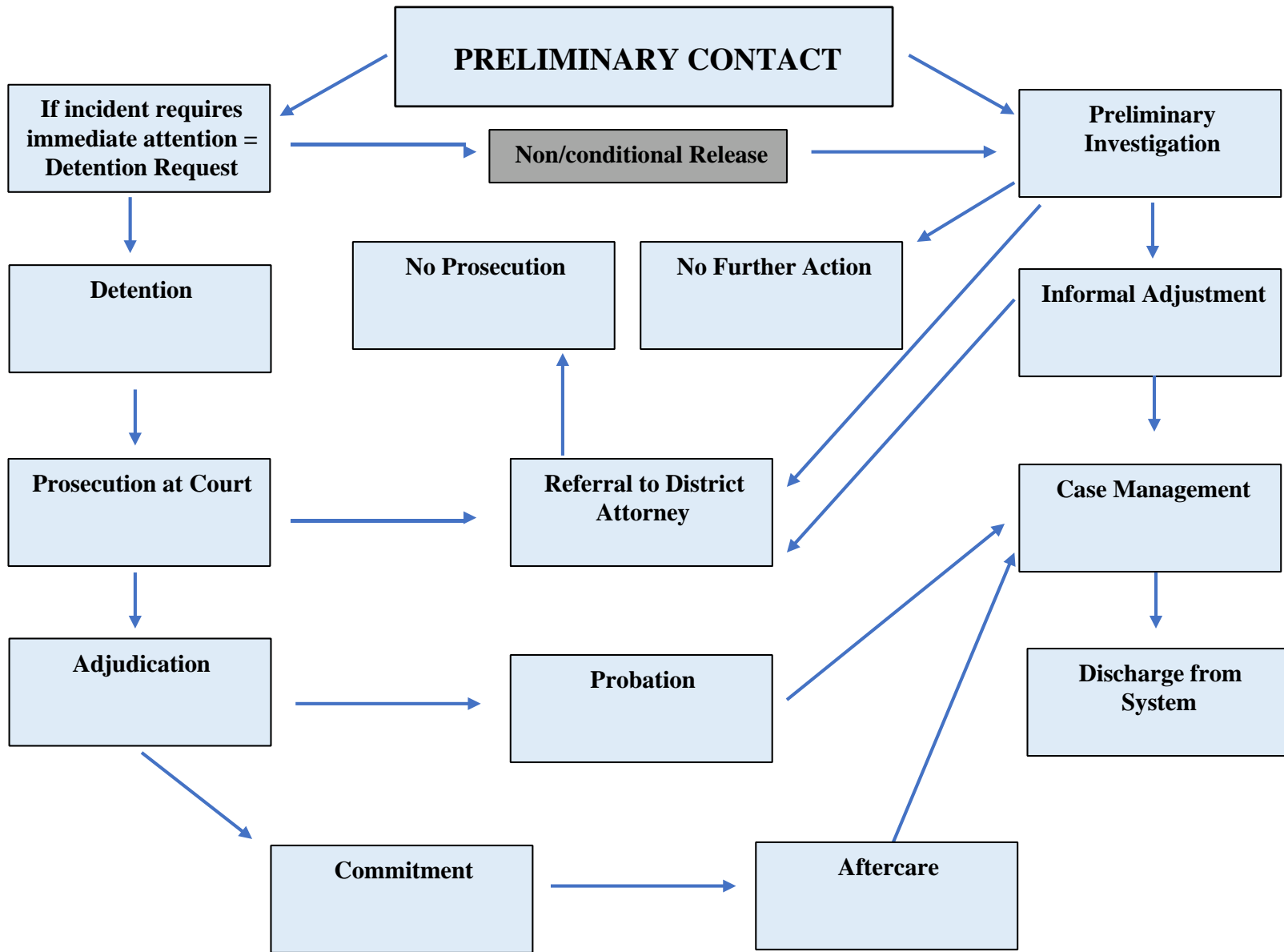
I would like to thank all the MDOC staff, community providers and stakeholders for contributing to this work. I would like to extend a special thanks to Atlantic Corporation for their dedication and expertise in completing this report.

Sincerely,

Christine Thibeault, LCSW
Associate Commissioner
Maine Department of Corrections
Division of Juvenile Service



Juvenile Court Process





Maine Department of Corrections 2021: Juvenile Division Overview

Community Metrics

Statewide Referrals

The total number of people referred to community corrections by police agencies or correctional offices.

Figure 1a: Referral Population (all referrals)

All Referrals													
	Q1			Q2			Q3			Q4			
	Jan-21	Feb-21	Mar-21	Apr-21	May-21	Jun-21	Jul-21	Aug-21	Sep-21	Oct-21	Nov-21	Dec-21	YTD
R1 Referrals	35	24	52	33	34	47	54	38	47	67	84	60	575
R2 Referrals	49	29	29	37	54	62	50	56	42	61	64	36	569
R3 Referrals	32	20	30	27	32	46	42	36	62	43	33	40	443
Unclassified	0	0	1	1	1	0	0	1	1	1	1	1	8
All Referrals	116	73	112	98	121	155	146	131	152	172	182	137	1595
Males	82	50	80	76	83	117	110	92	112	138	137	85	1162
Females	34	23	32	22	38	38	36	39	40	34	45	52	433
White	92	58	95	77	105	141	118	114	129	139	153	115	1336
YOC	12	8	8	13	10	8	19	11	14	17	19	16	155
Hispanic/Latino	7	3	3	6	4	4	7	1	4	6	6	1	52
Other/Mixed	5	4	6	2	2	2	2	5	5	10	4	5	52

Figure 1b: Referral Population (1st time referrals)

First Time Referrals													
	Q1			Q2			Q3			Q4			
	Jan-21	Feb-21	Mar-21	Apr-21	May-21	Jun-21	Jul-21	Aug-21	Sep-21	Oct-21	Nov-21	Dec-21	YTD
R1 1st Referrals	15	10	27	14	22	35	30	24	24	31	39	34	305
R2 1st Referrals	23	13	12	20	36	35	21	22	22	32	35	24	295
R3 1st Referrals	16	11	19	16	16	25	23	17	43	24	16	30	256
Unclassified	0	0	1	1	1	0	0	1	1	1	1	0	7
1st Time Referrals	54	34	59	51	75	95	74	64	90	88	91	88	863
Males	33	25	39	37	47	68	54	42	61	71	67	52	596
Females	21	9	20	14	28	27	20	22	29	17	24	36	267
White	45	30	48	41	69	88	57	56	80	67	81	74	736
YOC	3	3	6	6	4	4	10	3	5	9	7	10	70
Hispanic/Latino	3	0	2	2	2	2	6	1	1	2	2	0	23
Other/Mixed	3	1	3	2	0	1	1	4	4	10	1	4	34



Maine Department of Corrections 2021: Juvenile Division Overview

Figure 2: Referrals this Calendar Year (All Referrals & 1st Time)

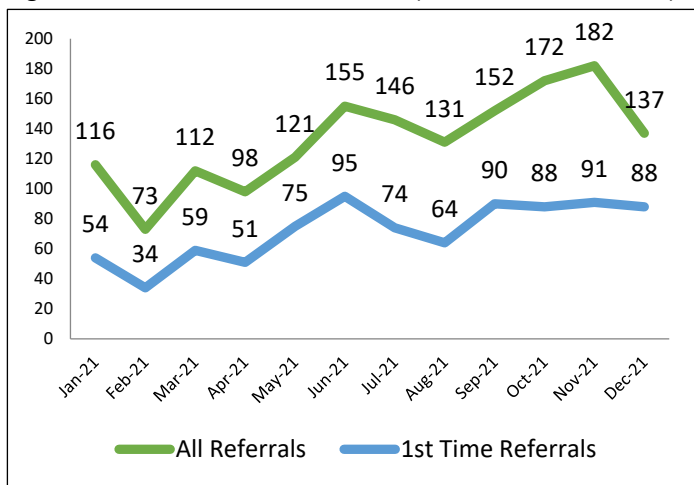


Figure 3: All Referrals by Region (n=and %)

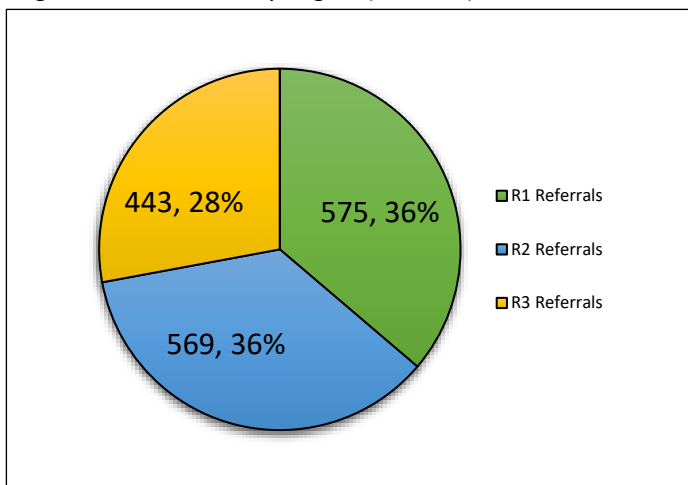


Figure 4: All Referrals by Gender (calendar year)

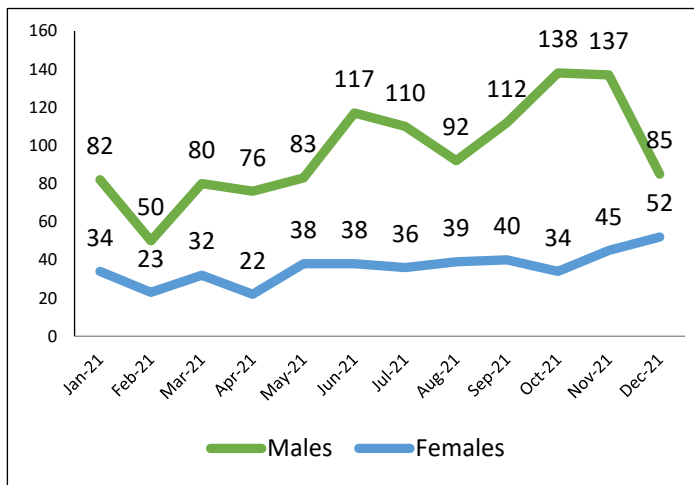


Figure 5: All Referrals by Gender (n= and %)

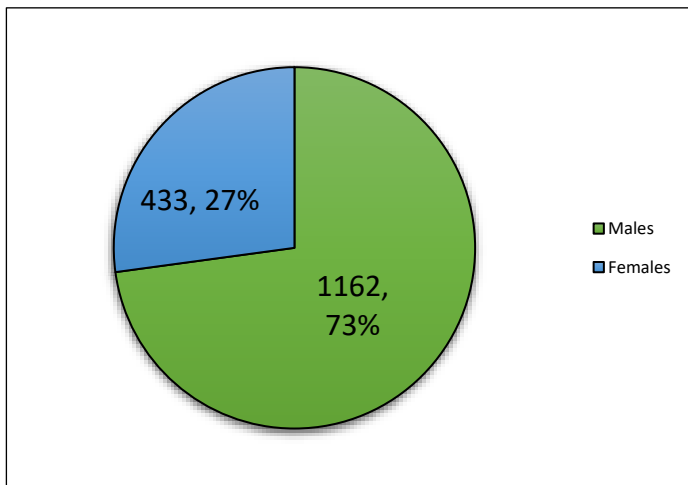


Figure 6: All Referrals by Race/Ethnicity (calendar year)

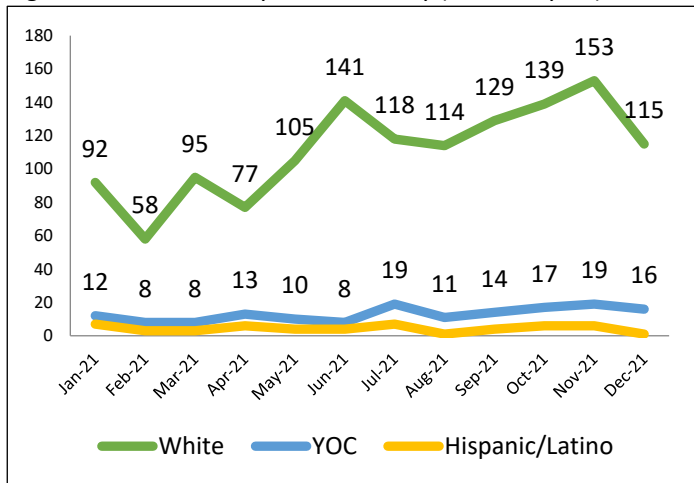
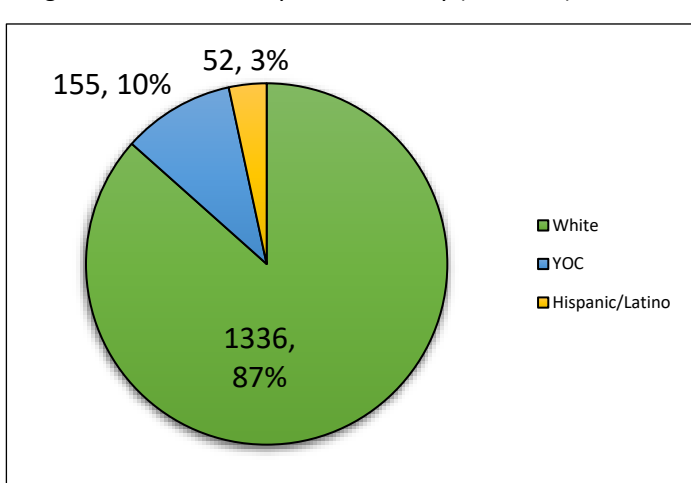


Figure 7: All Referrals by Race/Ethnicity (n= and %)





Maine Department of Corrections 2021: Juvenile Division Overview

Figure 8: All Referrals by Offense Type

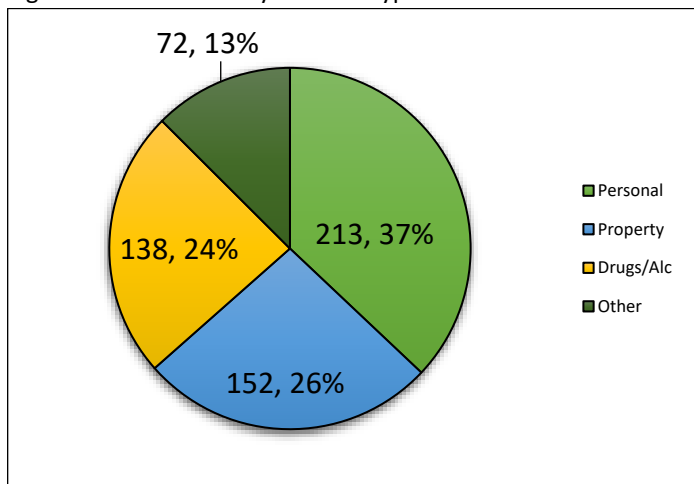


Figure 9: All Referrals by Offense Class

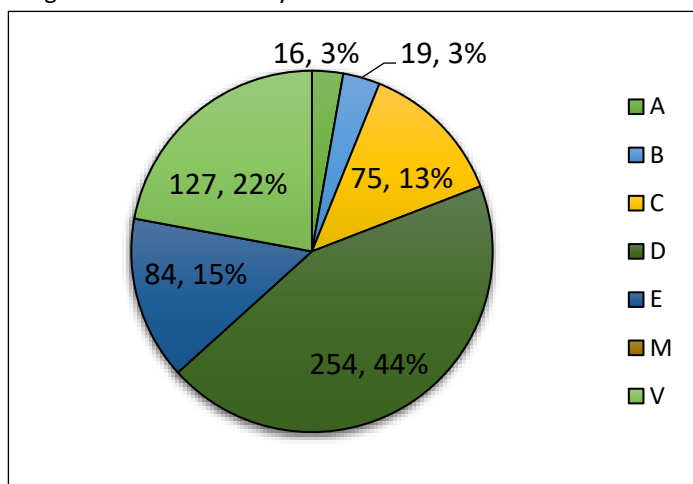
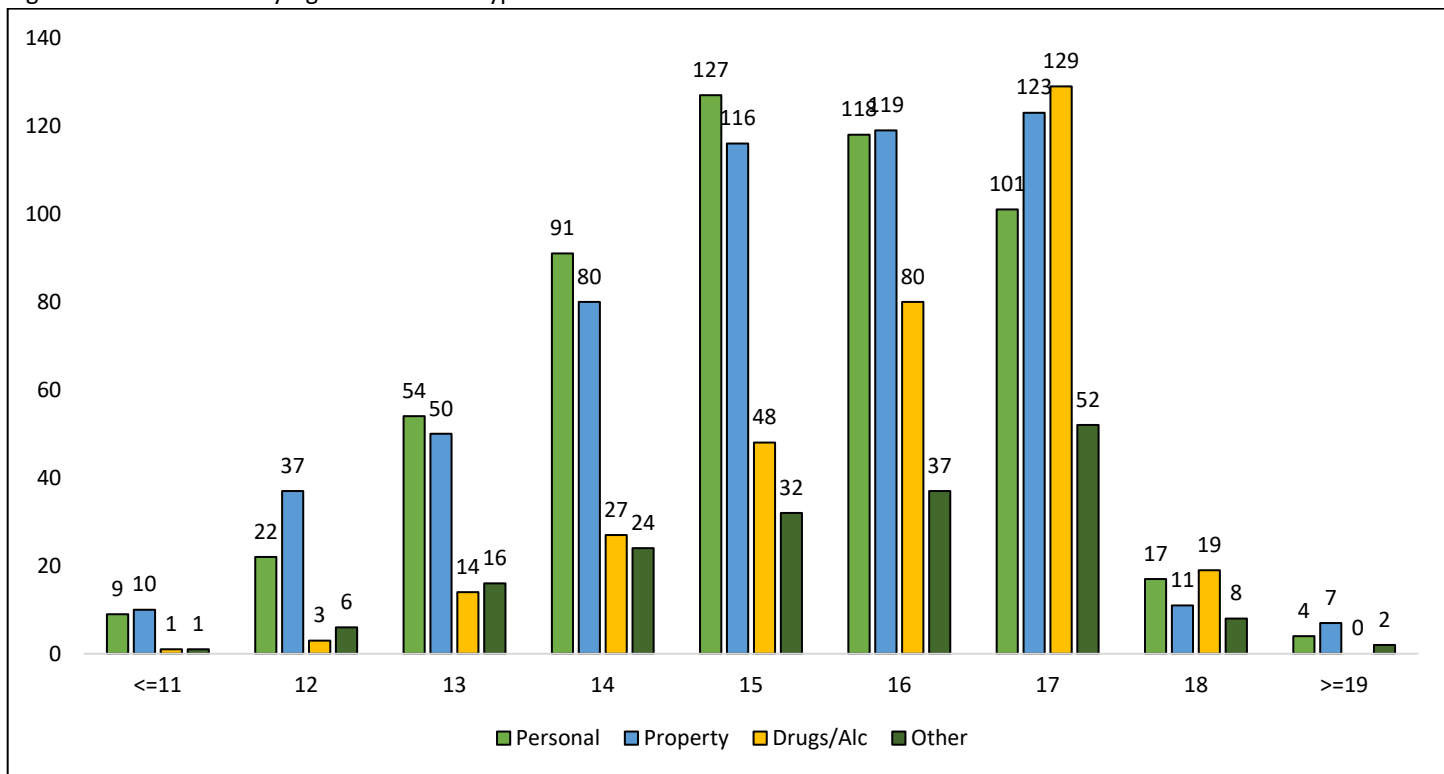


Figure 10: All Referrals by Age and Offense Type





Maine Department of Corrections 2021: Juvenile Division Overview

Figure 11: All Referrals by Age and Offense Class

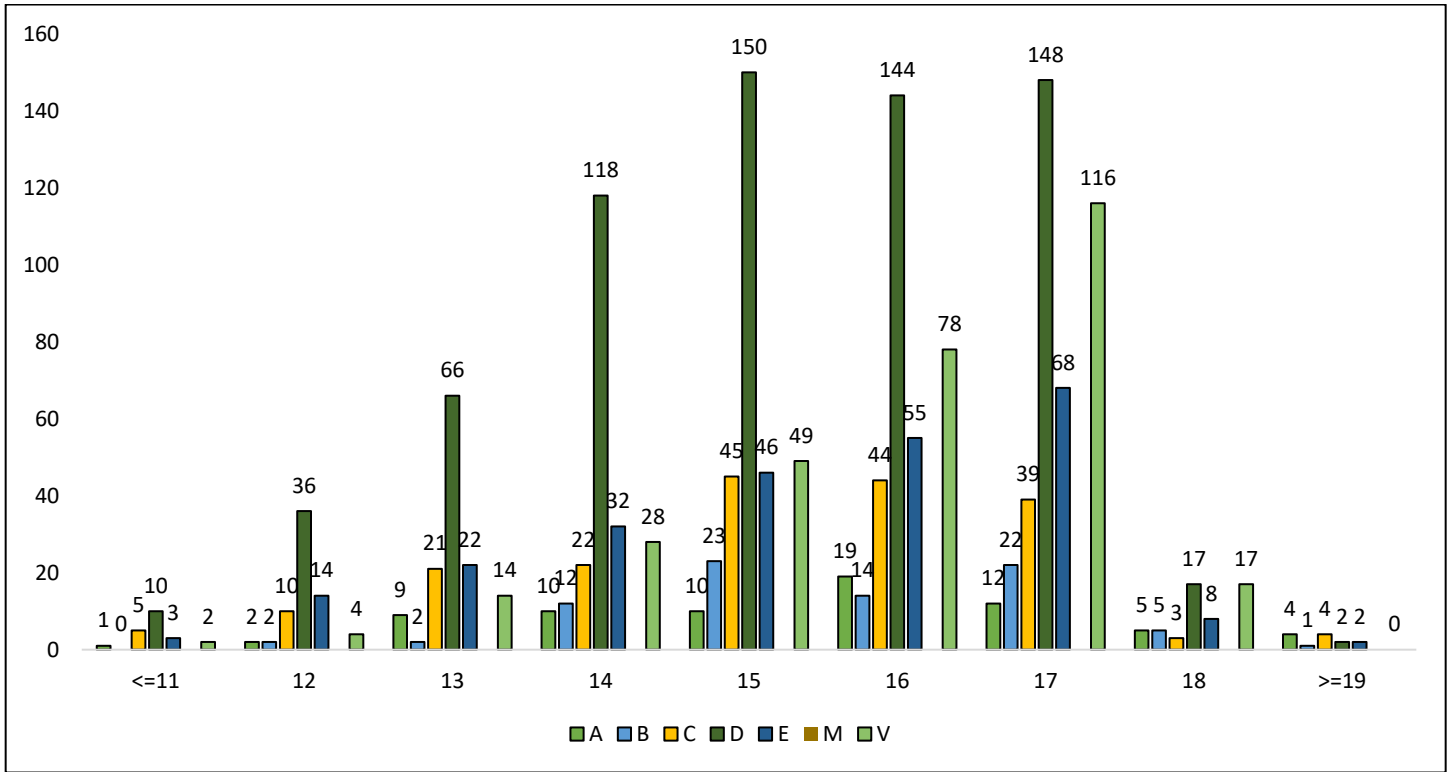
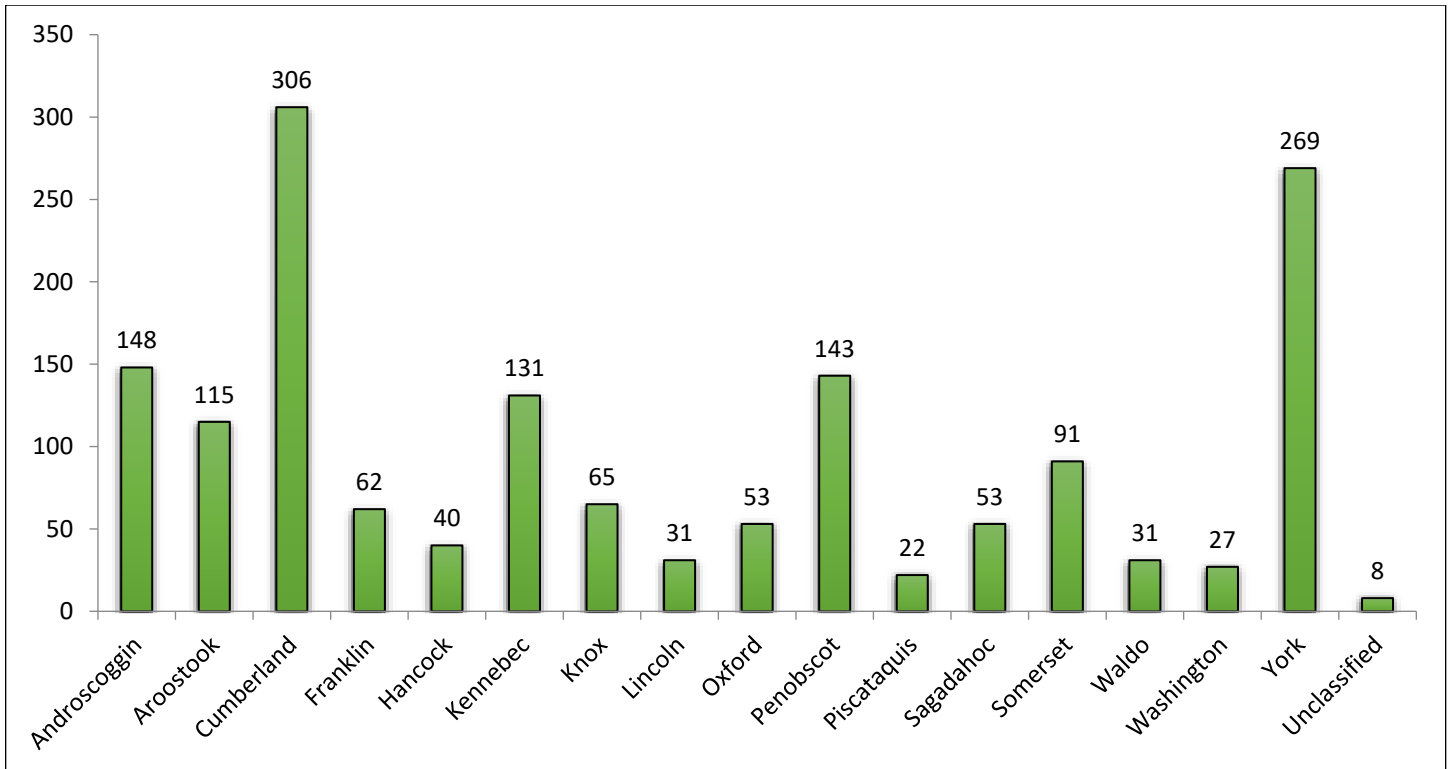


Figure 12: All Referrals by County (alphabetical)





Maine Department of Corrections 2021: Juvenile Division Overview

Figure 13: All Referrals by Police Agency (Top 25)

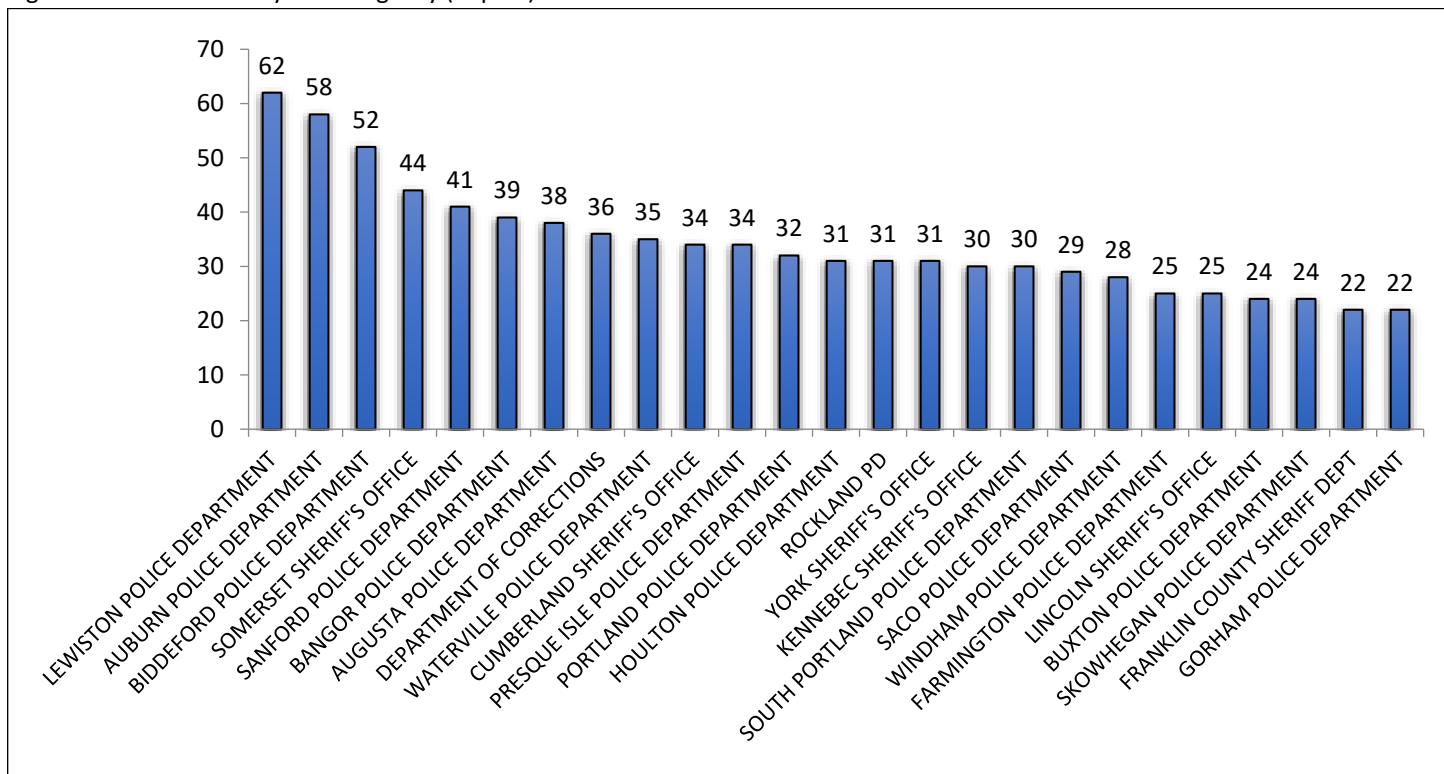
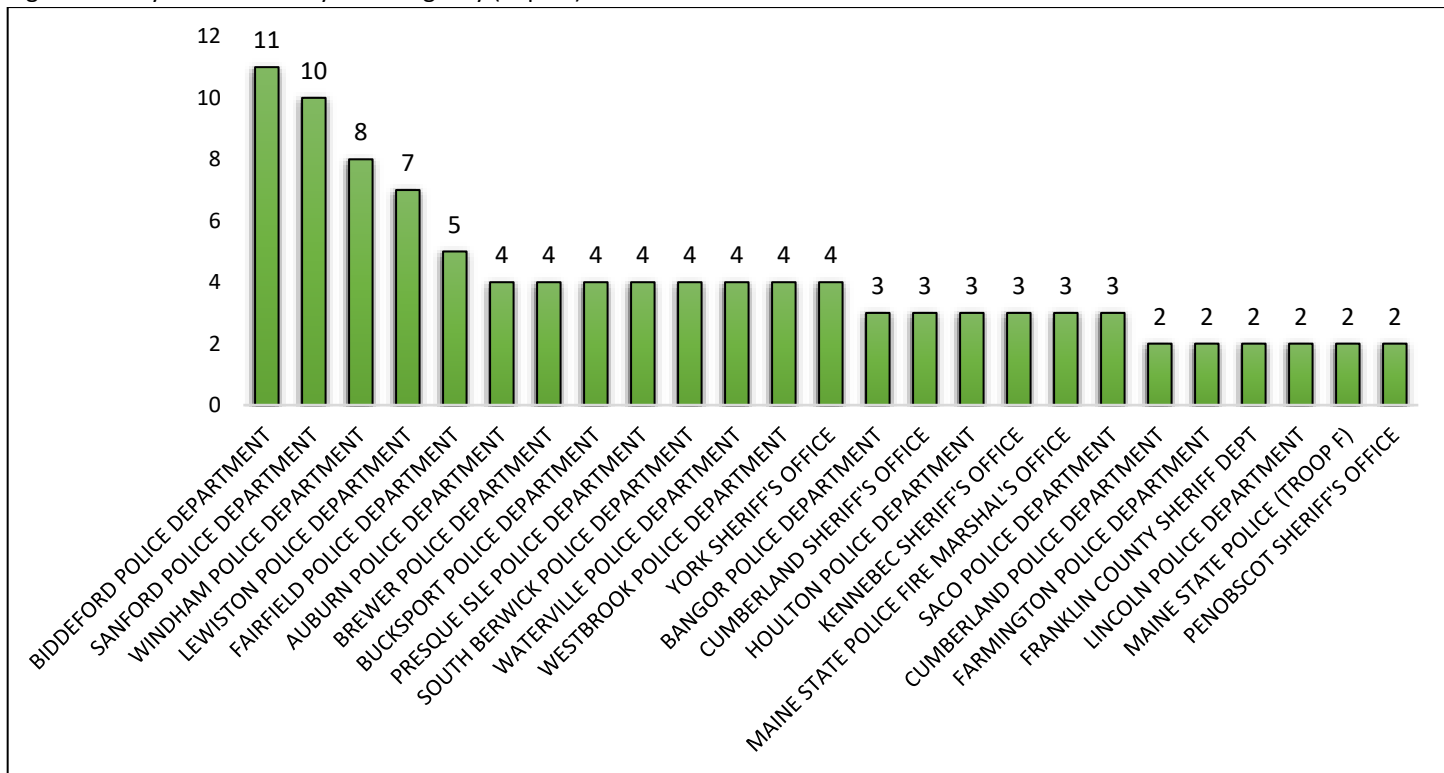


Figure 14: July All Referrals by Police Agency (Top 25)





Maine Department of Corrections 2021: Juvenile Division Overview

Figure 15: 1st Referrals by Gender (calendar year)

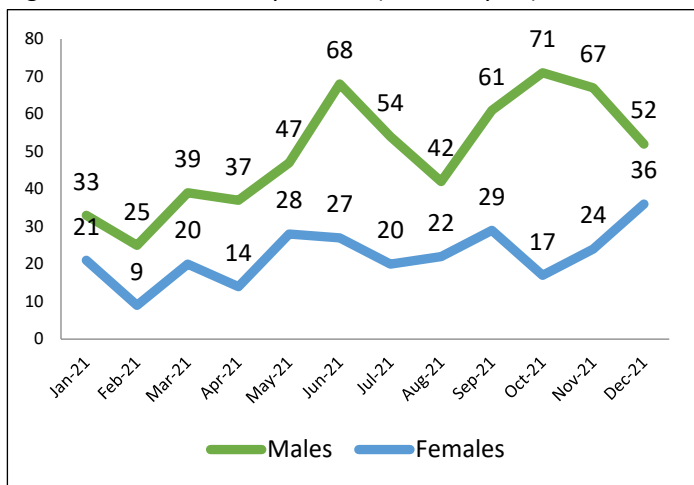


Figure 16: 1st Referrals by Gender (n= and %)

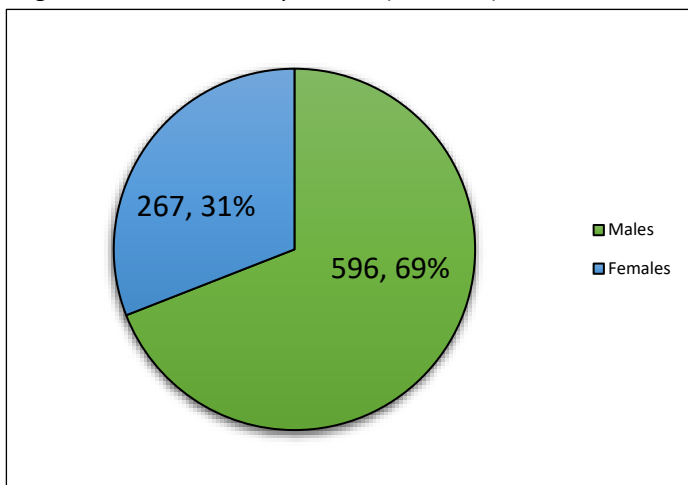


Figure 17: 1st Referrals by Race/Ethnicity (calendar year)

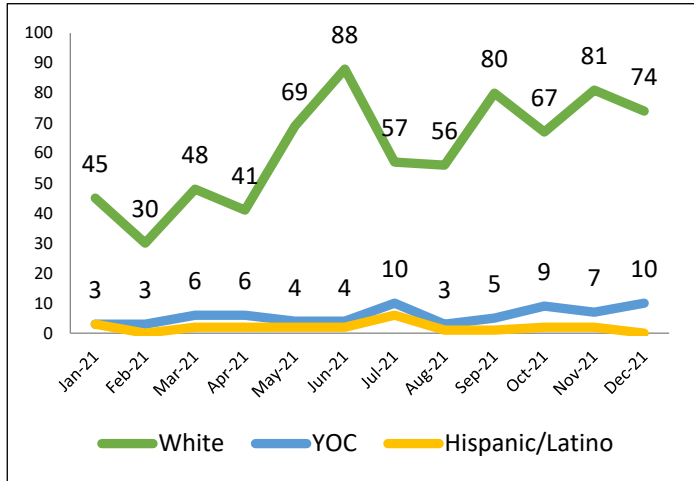


Figure 18: 1st Referrals by Race/Ethnicity (n= and %)

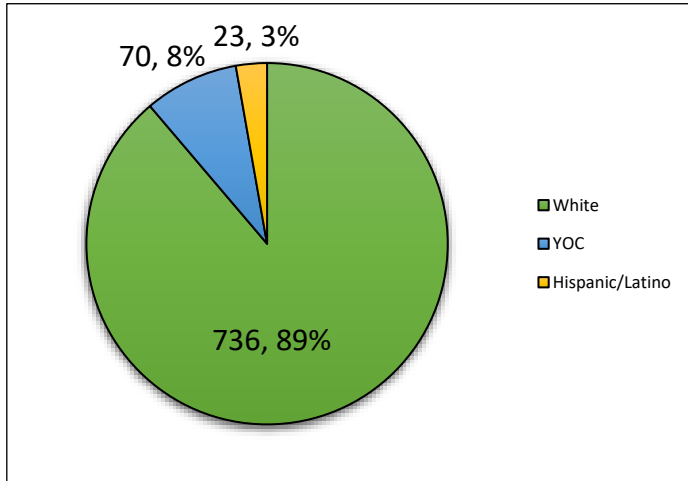


Figure 19: 1st Referrals by Offense Type (calendar year)

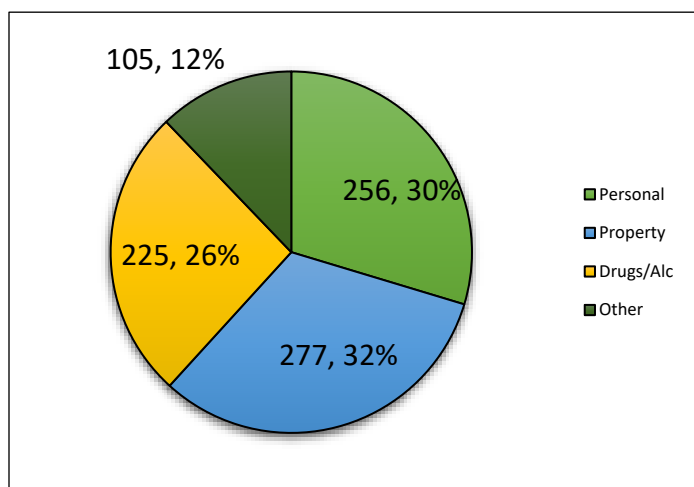
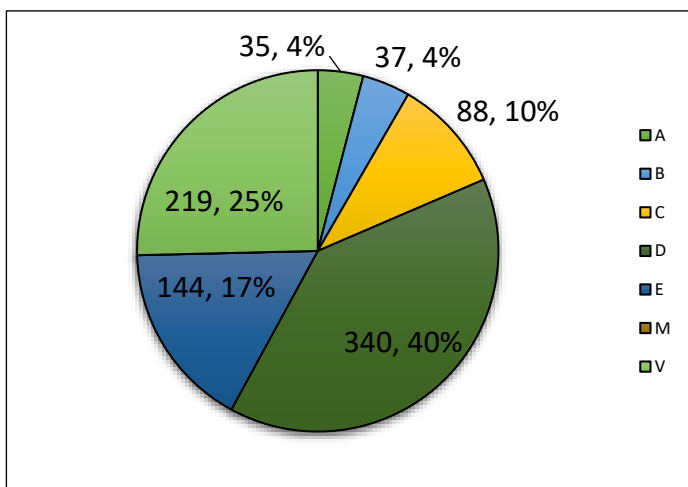


Figure 20: 1st Referrals by Offense Class (n= and %)





Maine Department of Corrections 2021: Juvenile Division Overview

Figure 21: 1st Referrals by County (alphabetical)

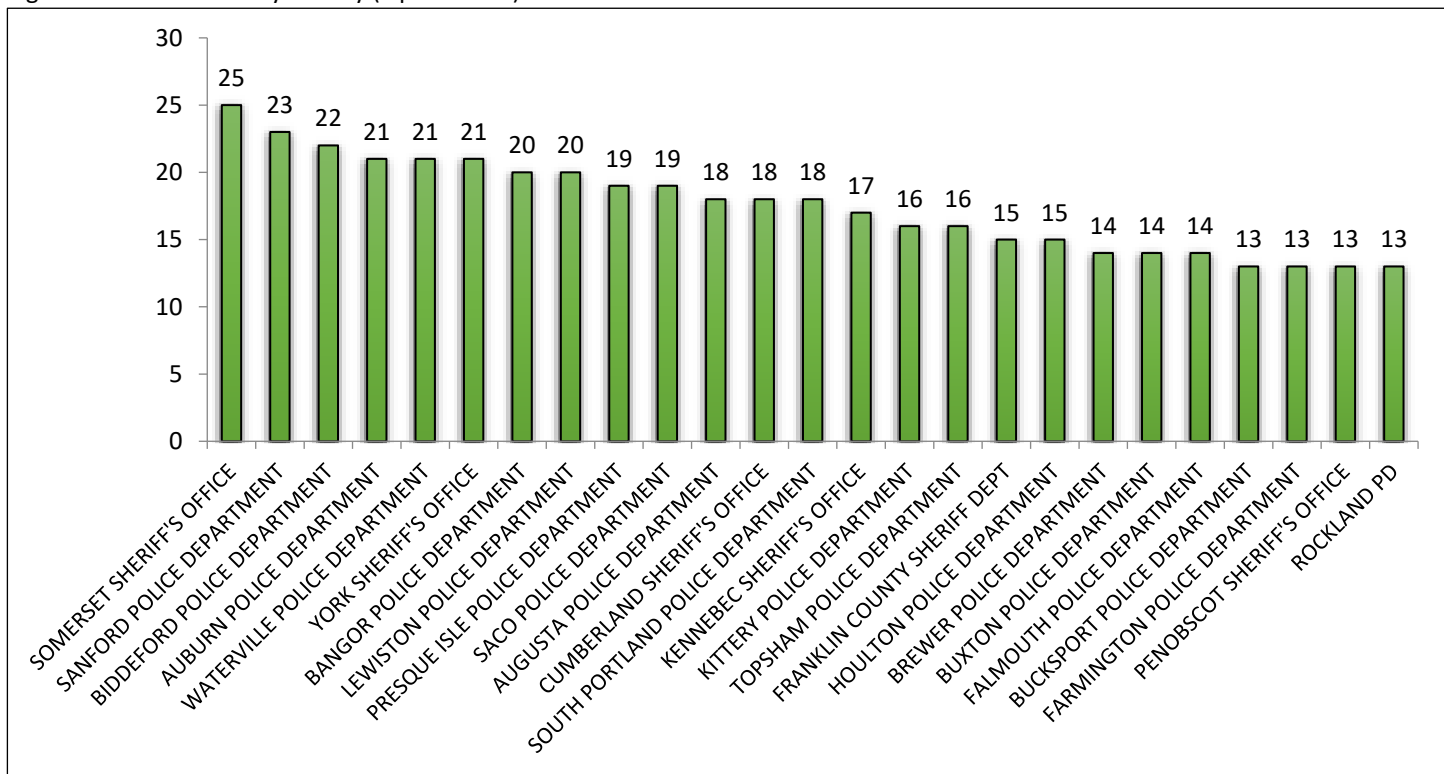
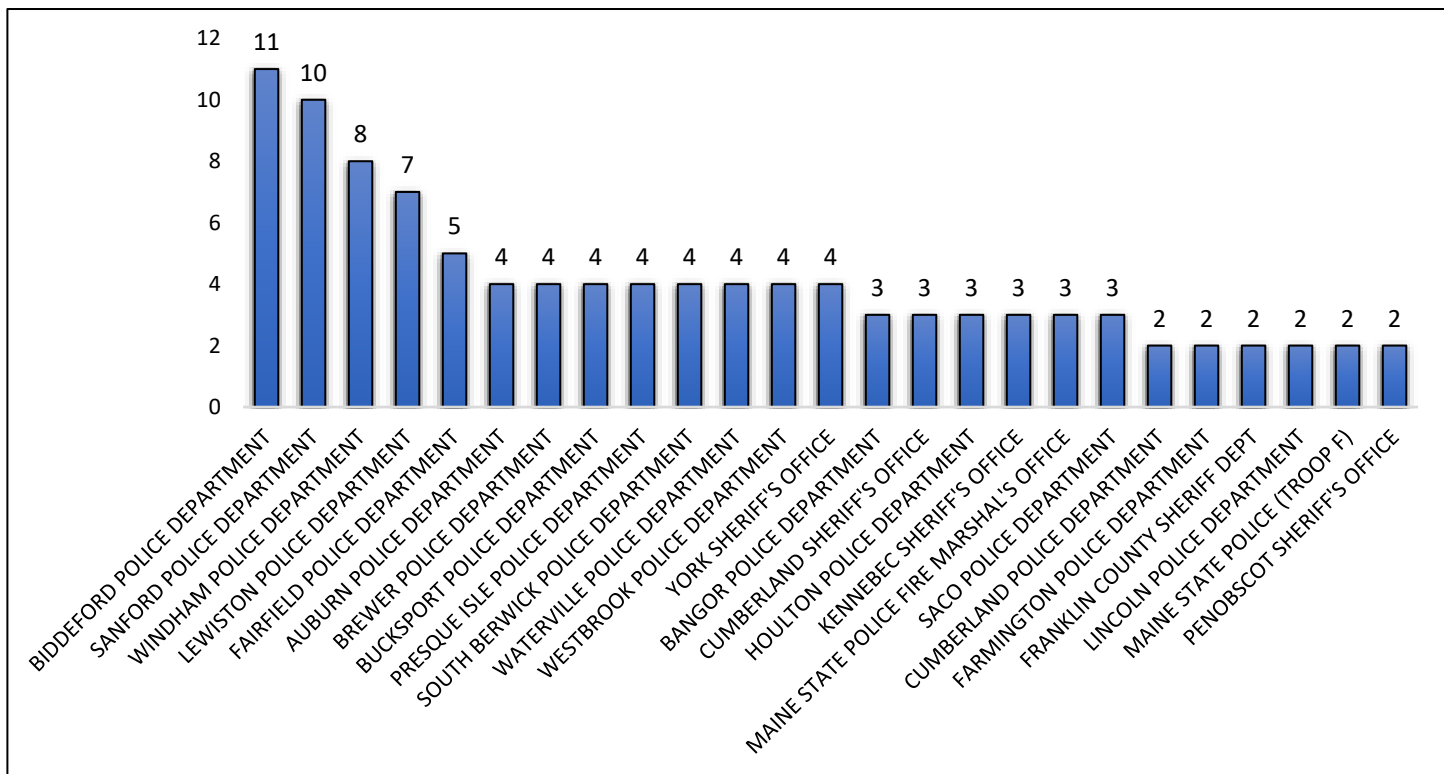


Figure 22: 1st Referrals by Police Agency (Top 25)





Maine Department of Corrections 2021: Juvenile Division Overview

Statewide Diversion

Figure 23: Diversion Population Tables*

Overall Diversion Population													
	Q1			Q2			Q3			Q4			
	Jan-21	Feb-21	Mar-21	Apr-21	May-21	Jun-21	Jul-21	Aug-21	Sep-21	Oct-21	Nov-21	Dec-21	YTD
R1 Cases	7	10	19	10	12	17	13	11	12	17	18	12	158
R2 Cases	12	7	7	7	18	13	12	16	11	13	12	9	137
R3 Cases	11	8	7	11	16	19	19	19	16	15	10	1	152
All Cases	30	25	34	28	46	49	44	46	39	45	40	22	448
R1 Diversions	4	6	18	9	10	13	11	10	8	17	16	12	134
R2 Diversions	9	5	7	5	17	11	9	15	8	12	12	9	119
R3 Diversions	9	5	6	10	16	18	16	18	16	15	10	1	140
All Diversions	22	16	32	24	43	42	36	43	32	44	38	22	394
R1 Diversion Rate	57%	60%	95%	90%	83%	76%	85%	91%	67%	100%	89%	100%	85%
R2 Diversion Rate	75%	71%	100%	71%	94%	85%	75%	94%	73%	92%	100%	100%	87%
R3 Diversion Rate	82%	63%	86%	91%	100%	95%	84%	95%	100%	100%	100%	100%	92%
Total Diversion Rate	73%	64%	94%	86%	93%	86%	82%	93%	82%	98%	95%	100%	88%

*Counts for diversion and diversion rates are for 1st time referrals only.

Figure 24: All Diversions Overtime

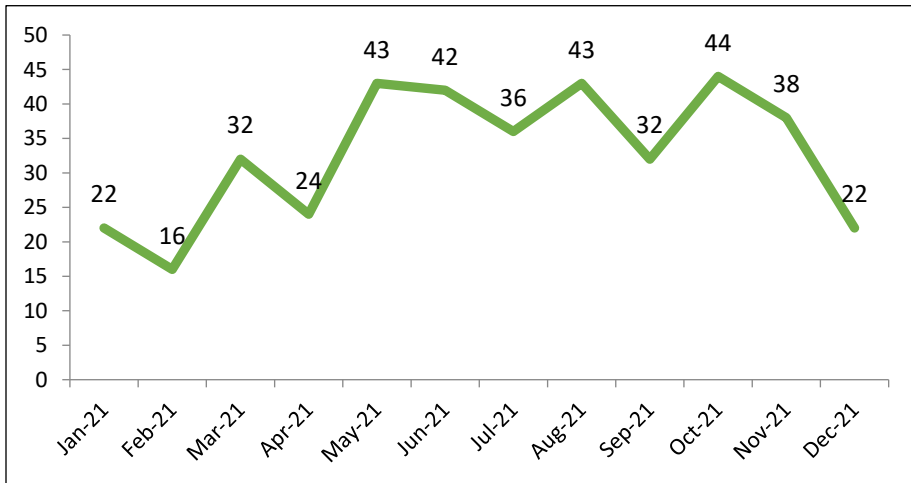
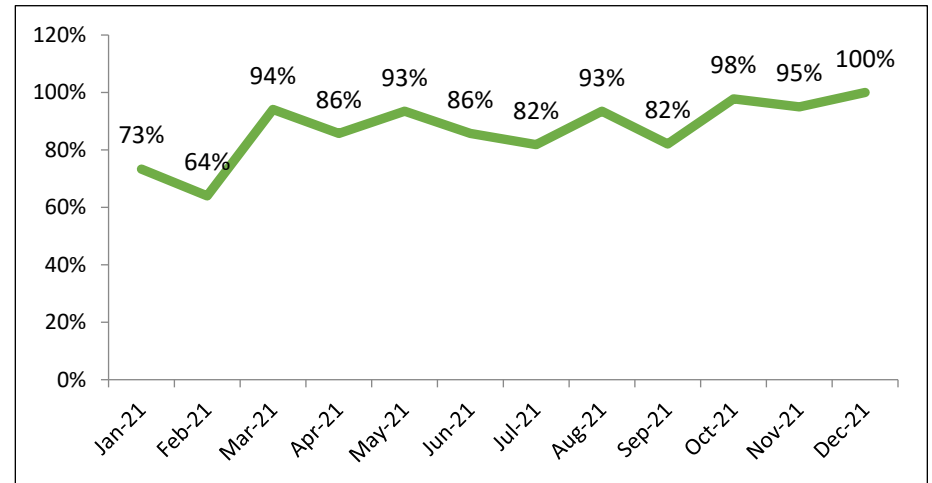


Figure 25: Diversion Rate Overtime





Maine Department of Corrections 2021: Juvenile Division Overview

Figure 26: Diversion Rate (by Gender)

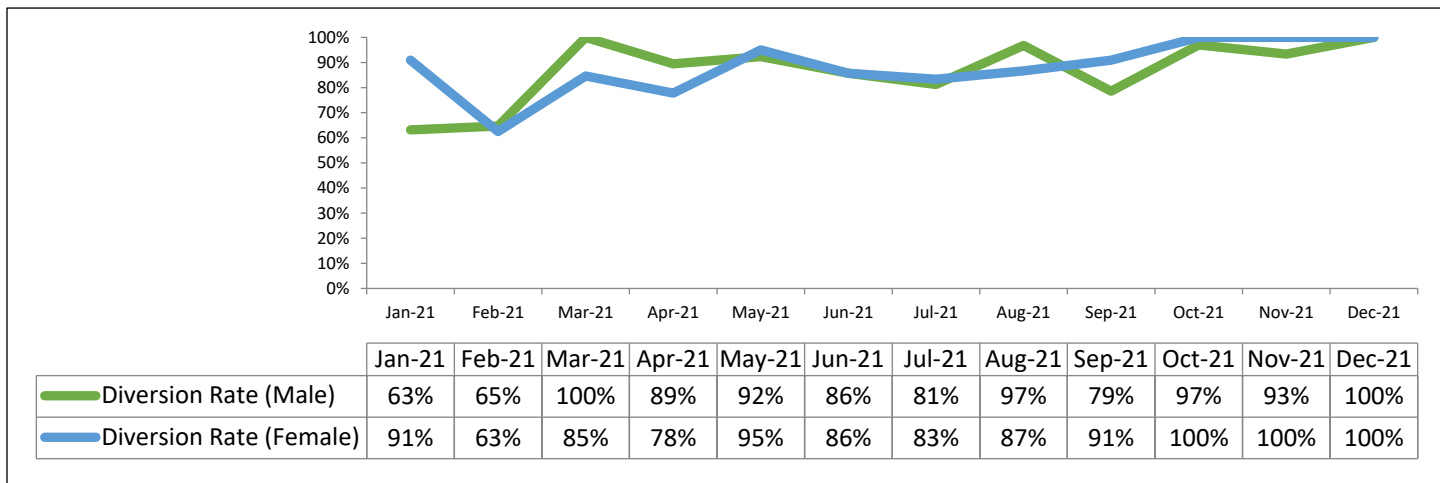
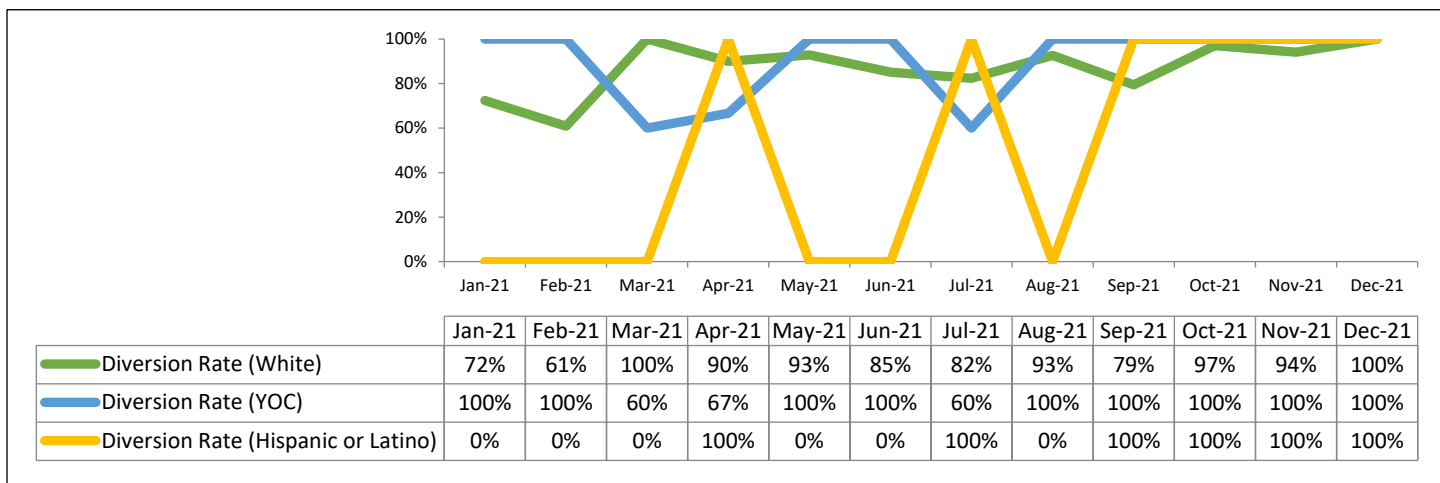
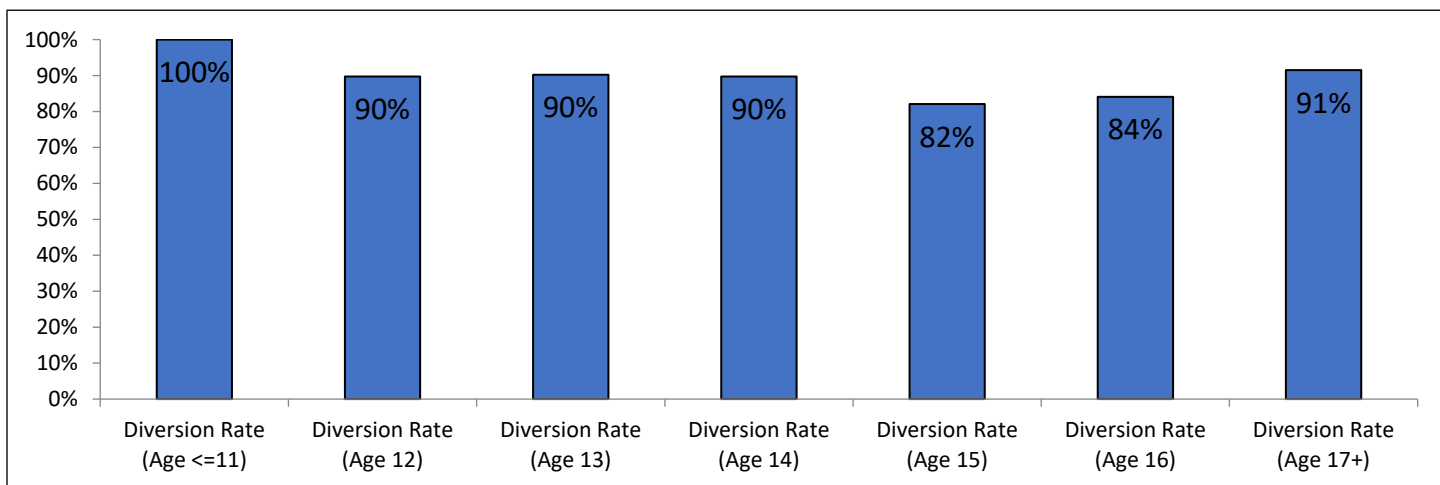


Figure 27: Diversion Rate (by Race/Ethnicity)*



*For the months with 0% diversion it implies no youth in this category were divertible.

Figure 28: Diversion Rate (by Age)





Maine Department of Corrections 2021: Juvenile Division Overview

Statewide Probation

Figure 29: Probation Tables Over Time

Overall Probation Population														
	Q1			Q2			Q3			Q4				
	Jan-21	Feb-21	Mar-21	Apr-21	May-21	Jun-21	Jul-21	Aug-21	Sep-21	Oct-21	Nov-21	Dec-21	YTD	Avg. Month
On Probation	99	92	86	93	97	95	95	91	88	90	91	93		
Started	5	6	11	8	4	8	6	8	10	7	9	5	87	7.3
Completed	8	8	3	3	5	3	8	8	1	4	6	9	66	5.5
Violations	6	4	11	3	4	8	4	4	3	3	2	2	54	4.5

Figure 30: On Probation

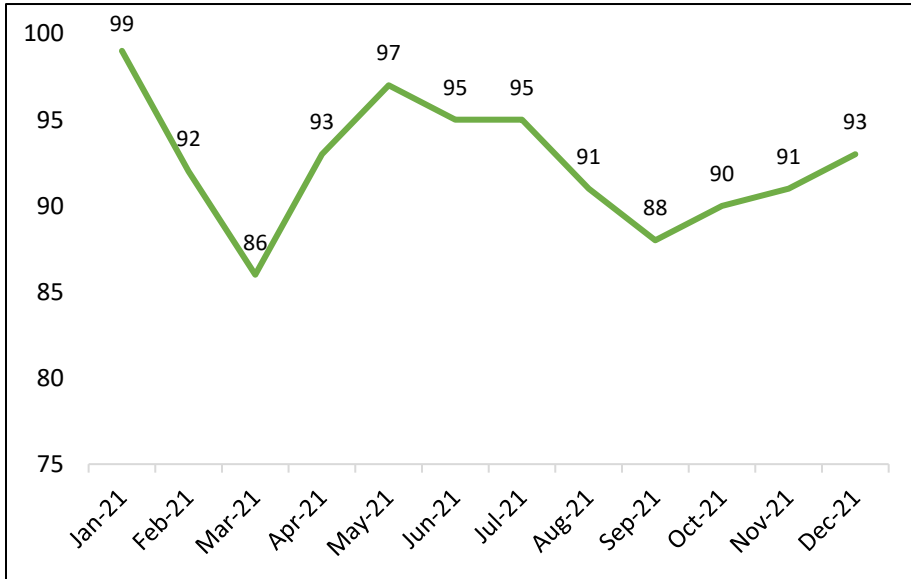
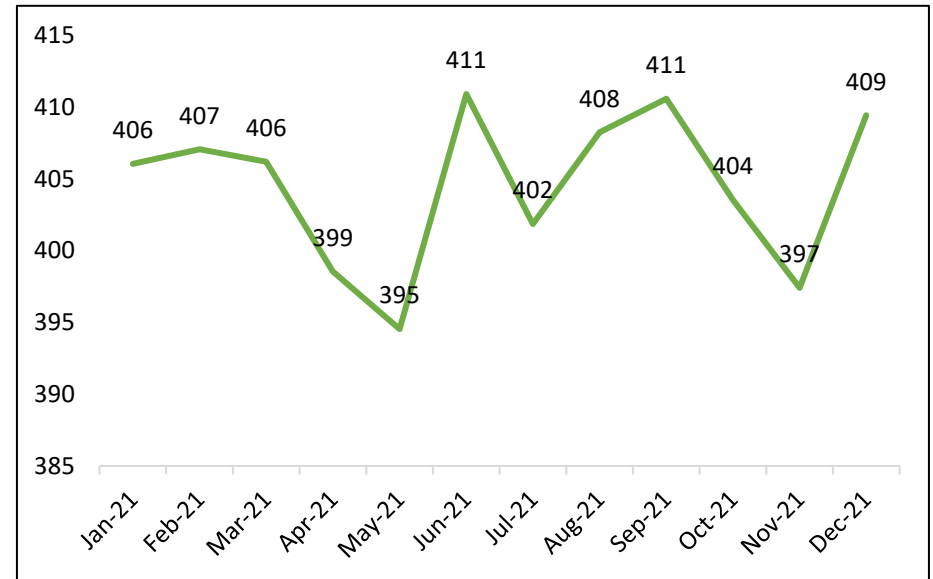


Figure 31: Probation Average LOS (Days)





Maine Department of Corrections 2021: Juvenile Division Overview

Statewide Admissions

Figure 35: Total Shock Sentences Over Time

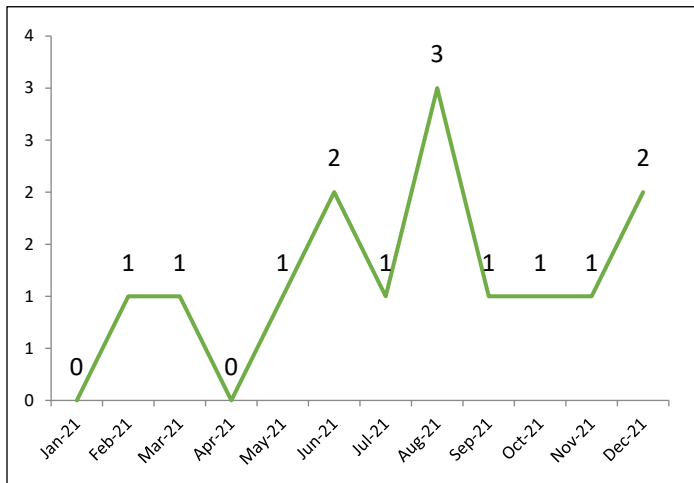


Figure 36: Shock Sentences by Gender

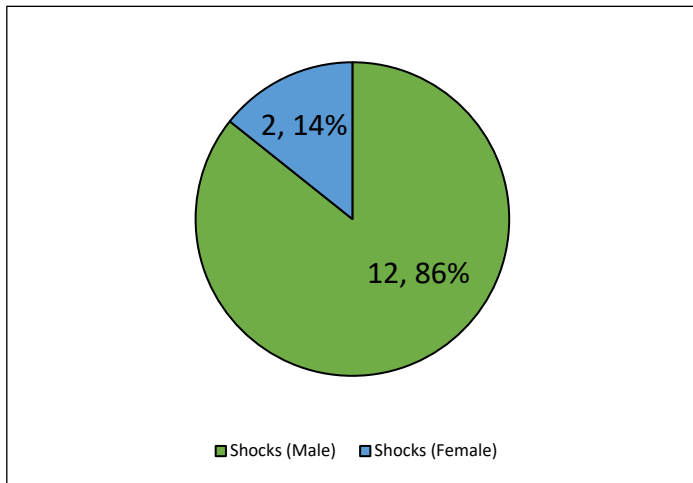


Figure 37: Shock Sentences by Race/Ethnicity

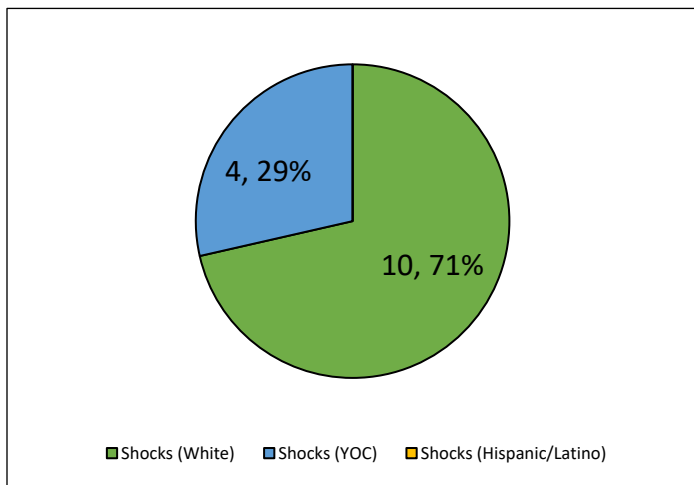
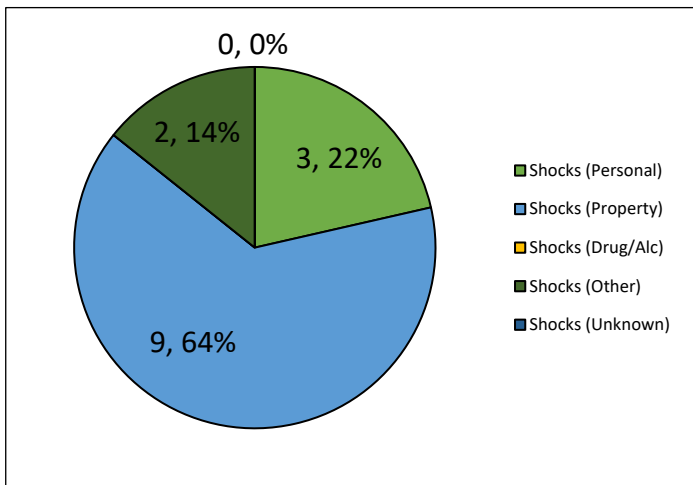


Figure 38: Shock Sentences by Offense Type





Maine Department of Corrections 2021: Juvenile Division Overview

Figure 39: Total Detention Admissions Over Time

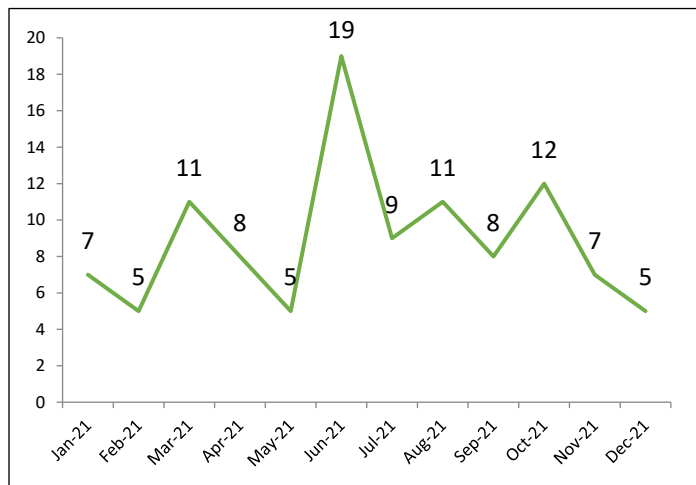


Figure 40: Detentions by Gender

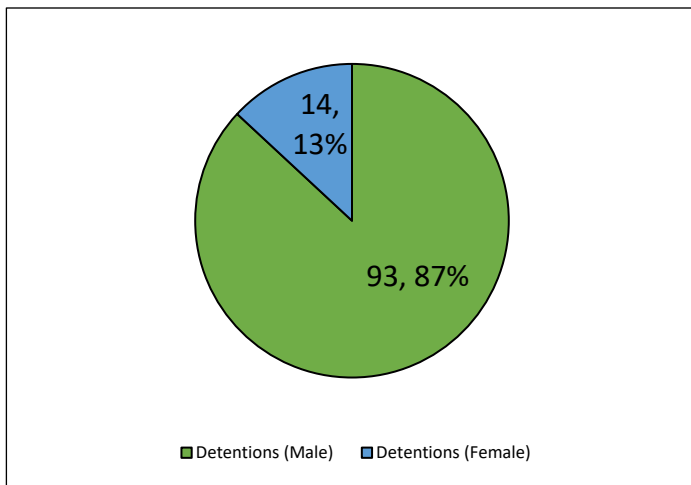


Figure 41: Detentions by Race/Ethnicity

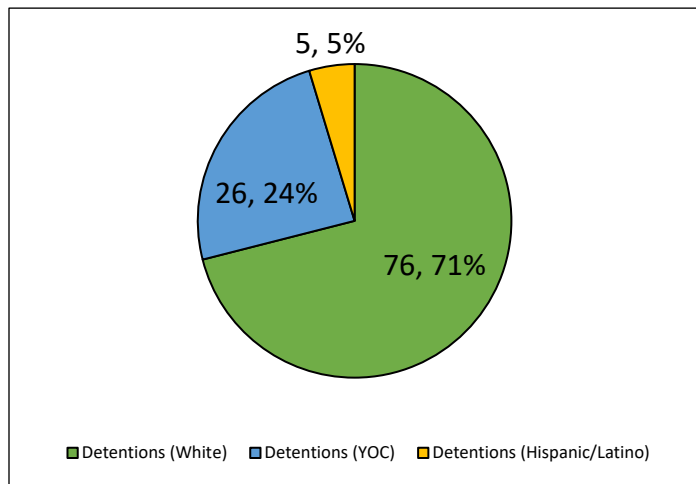
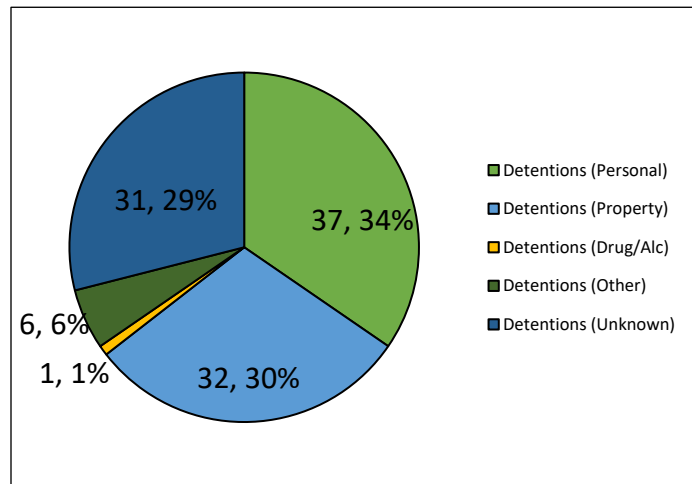


Figure 42: Detentions by Offense Type





Maine Department of Corrections 2021: Juvenile Division Overview

Figure 43: Total Commitment Admissions Over Time

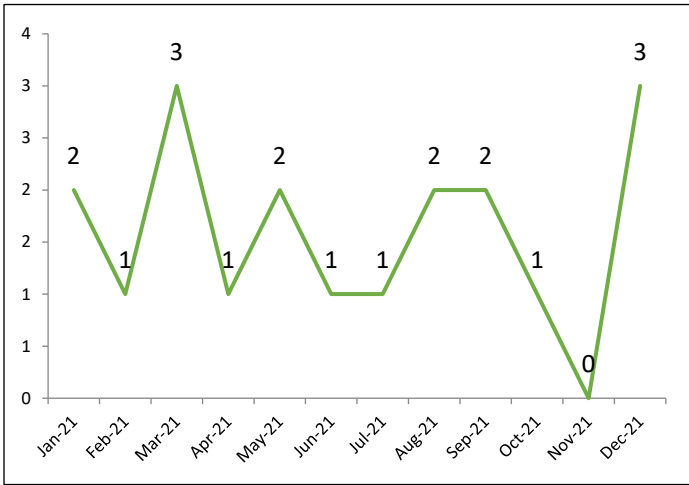


Figure 44: Commitments by Gender

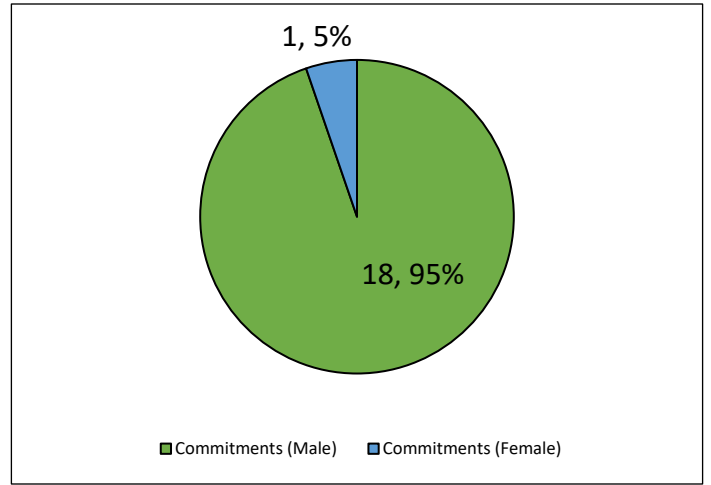


Figure 45: Commitments by Race/Ethnicity

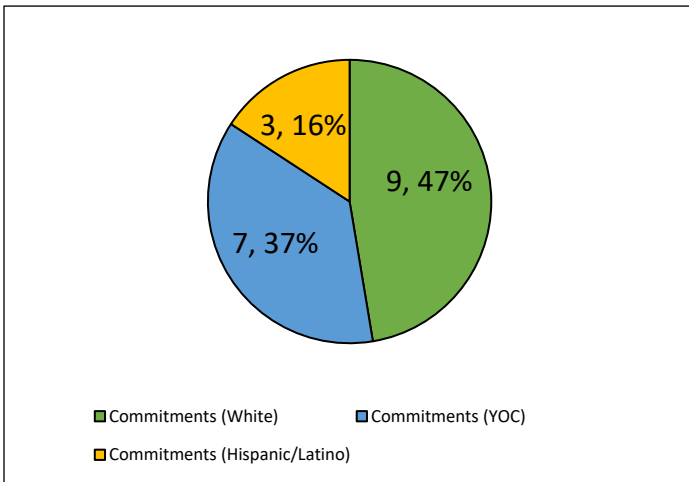
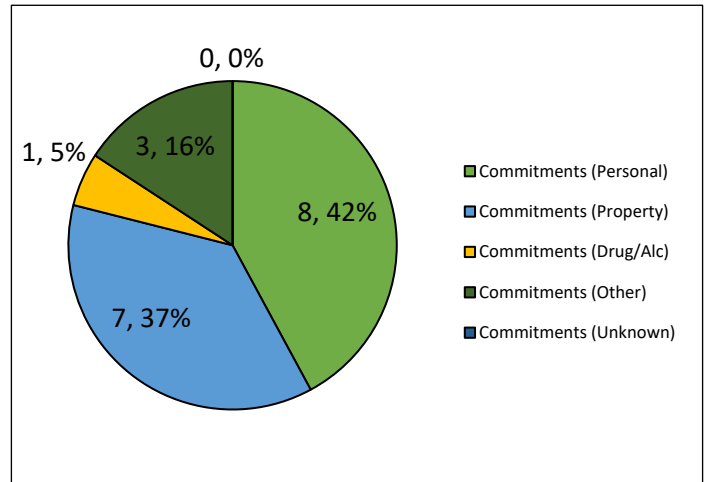


Figure 46: Commitments by Offense Type





Maine Department of Corrections 2021: Juvenile Division Overview

Figure 47: All Detentions by Age

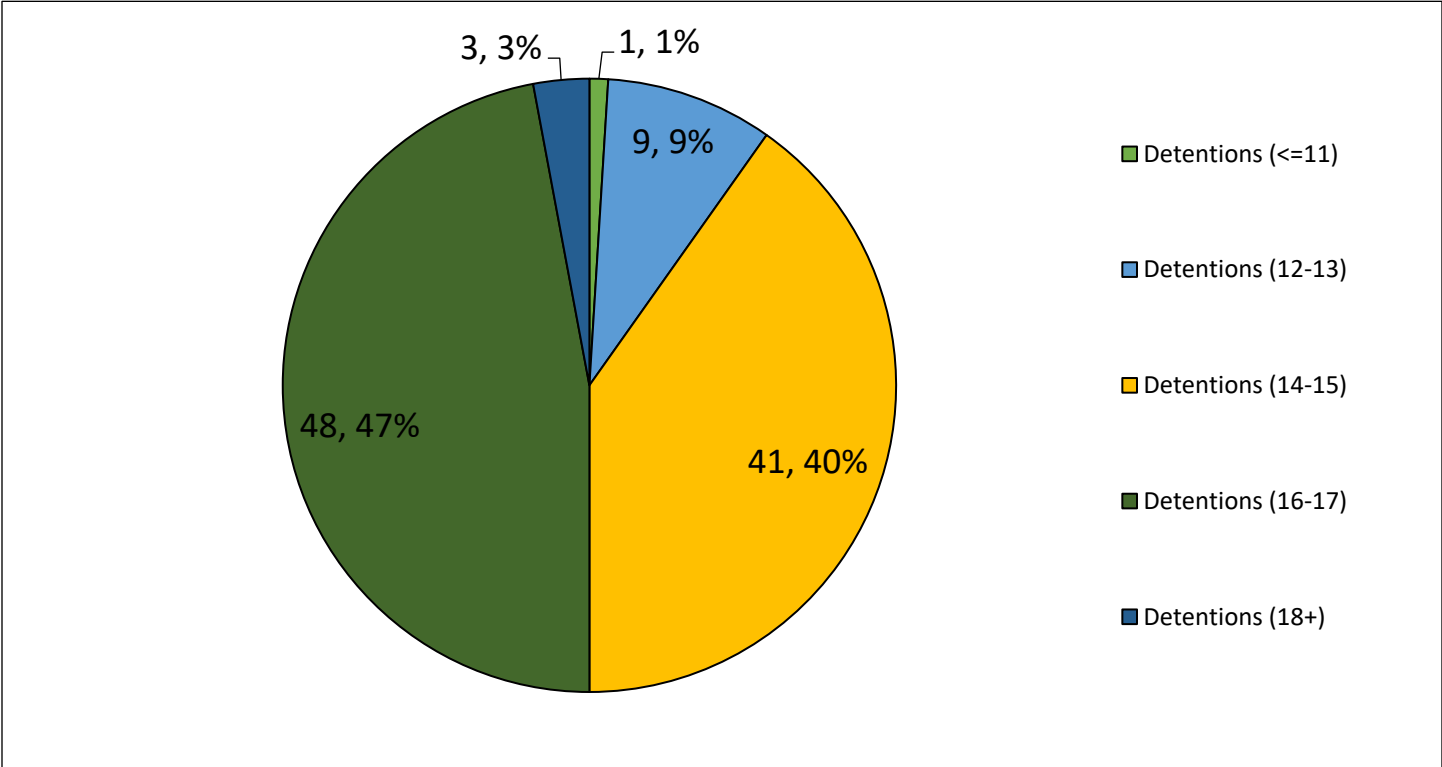
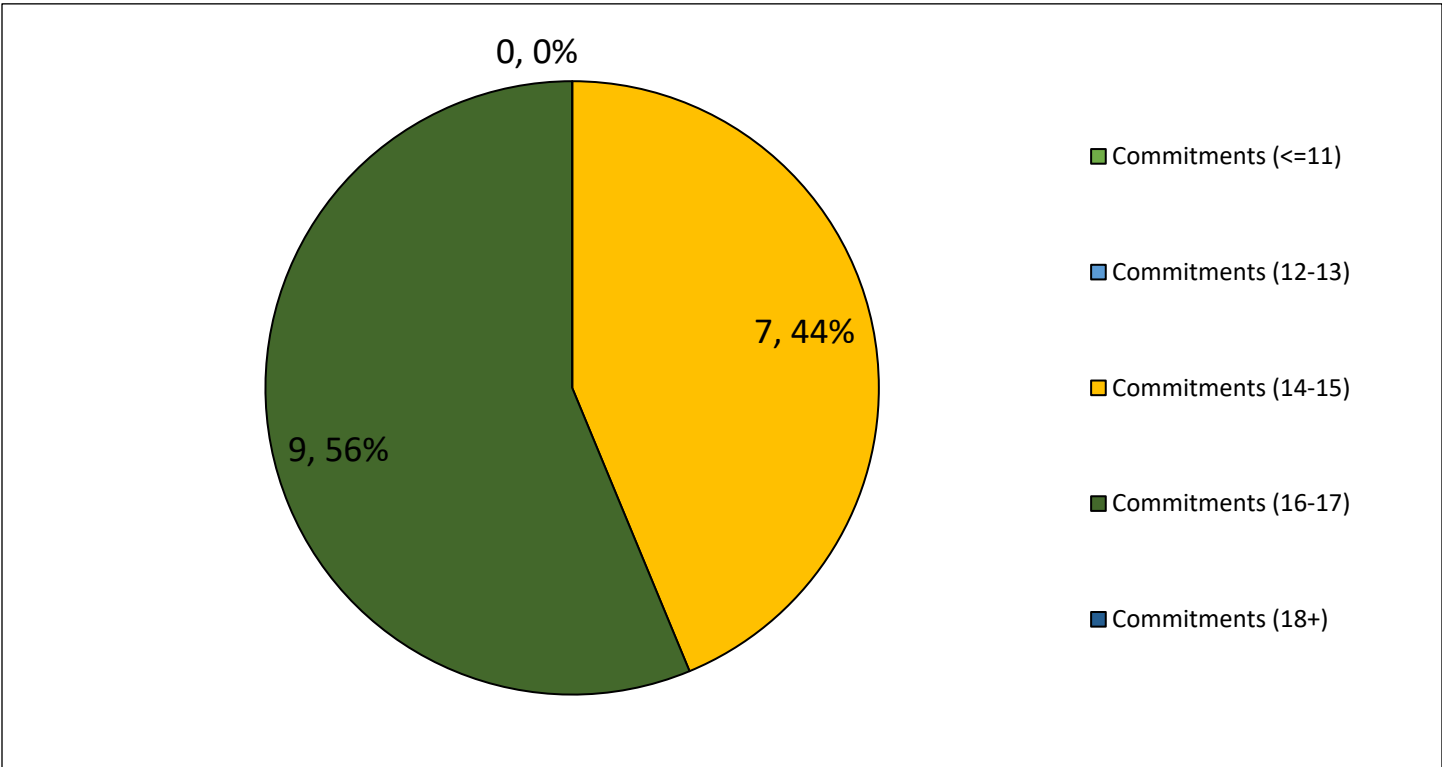


Figure 48: All Commitments by Age





Maine Department of Corrections 2021: Juvenile Division Overview

Statewide LOS Analysis

Figure 49: Average Detained Youth LOS Trendline Analysis

All Regions Detained AVERAGE LOS YTD Analysis													
	Q1			Q2			Q3			Q4			YTD Average
	Jan	Feb	Mar	Apr	May	Jun	Jul	Aug	Sep	Oct	Nov	Dec	
2015	20.8	21.0	21.4	21.5	20.9	21.9	22.0	21.4	20.9	20.8	21.1	18.9	21.0
2016	18.7	19.2	18.2	18.7	18.9	18.7	18.7	18.9	20.5	21.3	21.1	20.0	19.4
2017	20.8	20.7	19.3	20.8	19.6	19.5	18.8	18.0	17.6	16.2	15.7	16.7	18.6
2018	17.1	17.0	16.5	16.5	16.1	17.3	17.2	17.3	17.1	17.4	17.7	16.6	17.0
2019	16.2	16.6	16.3	18.3	18.7	18.7	17.8	18.3	19.1	19.0	21.0	20.8	18.4
2020	21.3	21.7	21.4	21.8	20.8	21.9	21.5	22.5	22.5	21.9	23.4	21.3	21.8
2021	22.3	23.1	23.3	24.2	23.6	21.9	22.3	20.9	22.4	27.1	28.7	32.4	24.4

Figure 50: Average Committed Youth LOS Trendline Analysis

All Regions Committed AVERAGE LOS YTD Analysis													
	Q1			Q2			Q3			Q4			YTD Average
	Jan	Feb	Mar	Apr	May	Jun	Jul	Aug	Sep	Oct	Nov	Dec	
2015	468.6	452.2	456.0	458.6	451.5	469.0	473.9	468.6	464.2	450.9	440.4	457.9	459.3
2016	455.9	464.5	481.5	487.8	497.5	490.1	472.2	472.9	450.6	456.8	472.9	471.1	472.8
2017	466.5	469.1	450.3	441.5	420.6	402.7	418.1	412.5	414.2	419.3	423.7	402.6	428.4
2018	397.3	391.1	390.5	406.2	431.4	439.8	454.3	442.5	460.9	473.5	474.6	462.4	435.4
2019	473.2	484.9	508.3	519.1	502.6	466.0	455.6	421.3	399.2	379.1	378.9	415.5	450.3
2020	422.9	409.4	388.5	336.6	319.5	325.7	355.8	361.1	369.9	388.1	403.7	370.2	370.9
2021	307.5	272.4	283.8	292.1	349.5	372.9	396.3	367.0	356.8	366.8	377.9	372.8	343.0



Maine Department of Corrections 2021: Juvenile Division Overview

Regional Metrics

Region 1 Referrals

Figure 51: R1 Referrals (All and 1st Time)

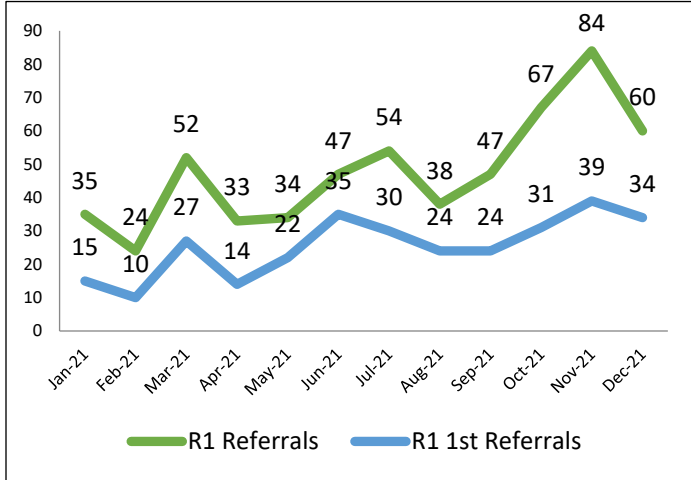


Figure 52: R1 All Referrals (by County)

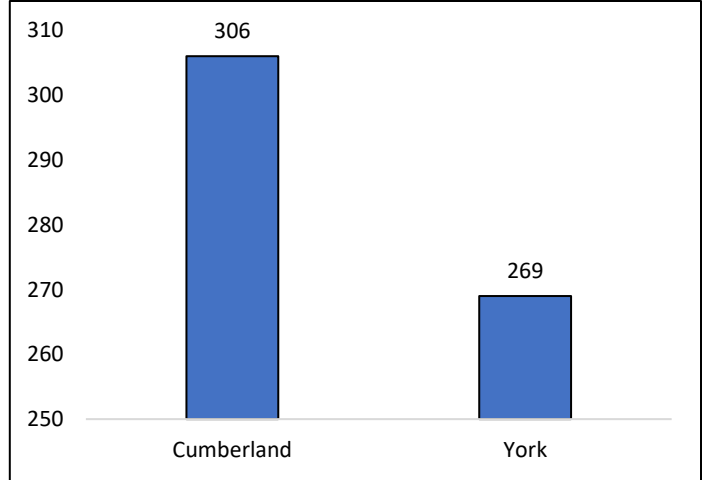


Figure 53: R1 All Referrals (by Offense Type)

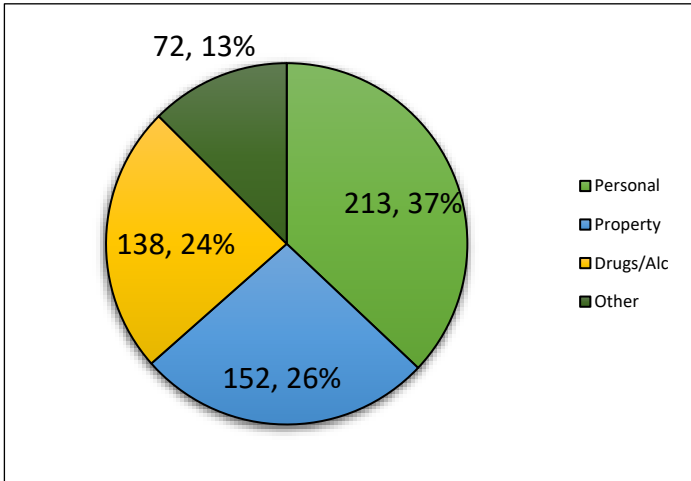
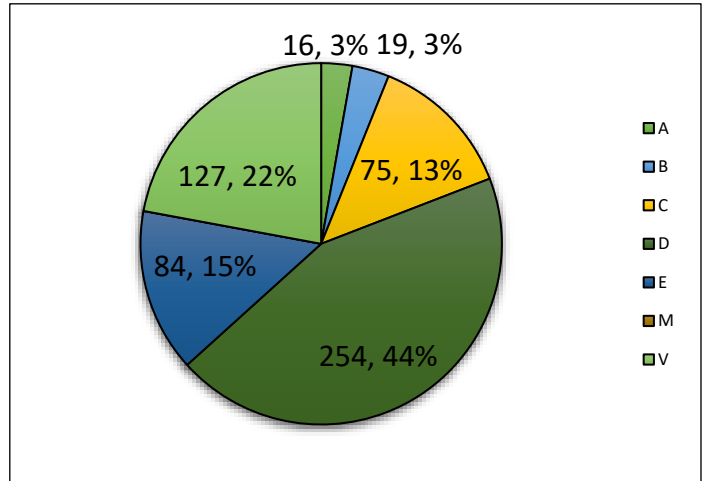


Figure 54: R1 All Referrals (by Offense Class)





Maine Department of Corrections 2021: Juvenile Division Overview

Region 1 Diversions

Figure 55: R1 Diversions Overtime*

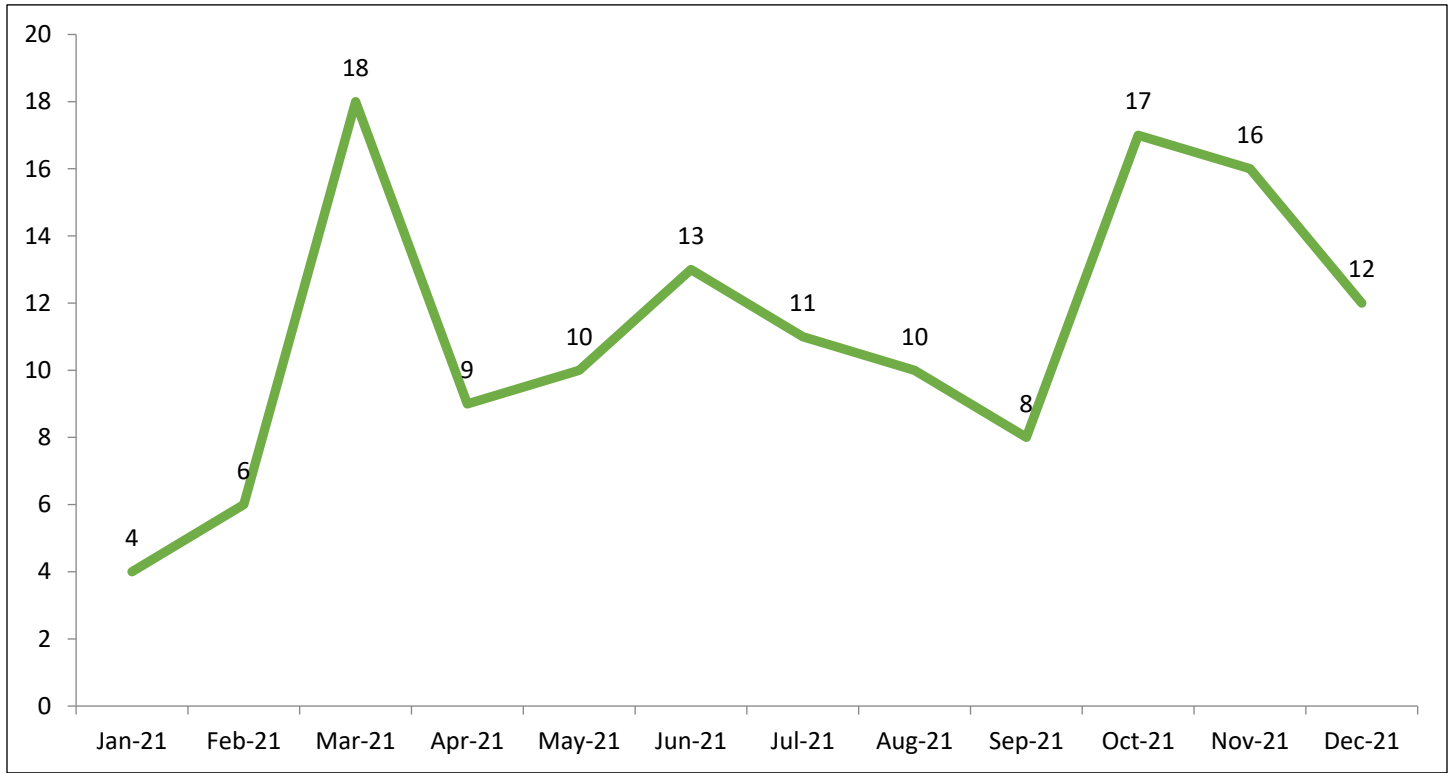
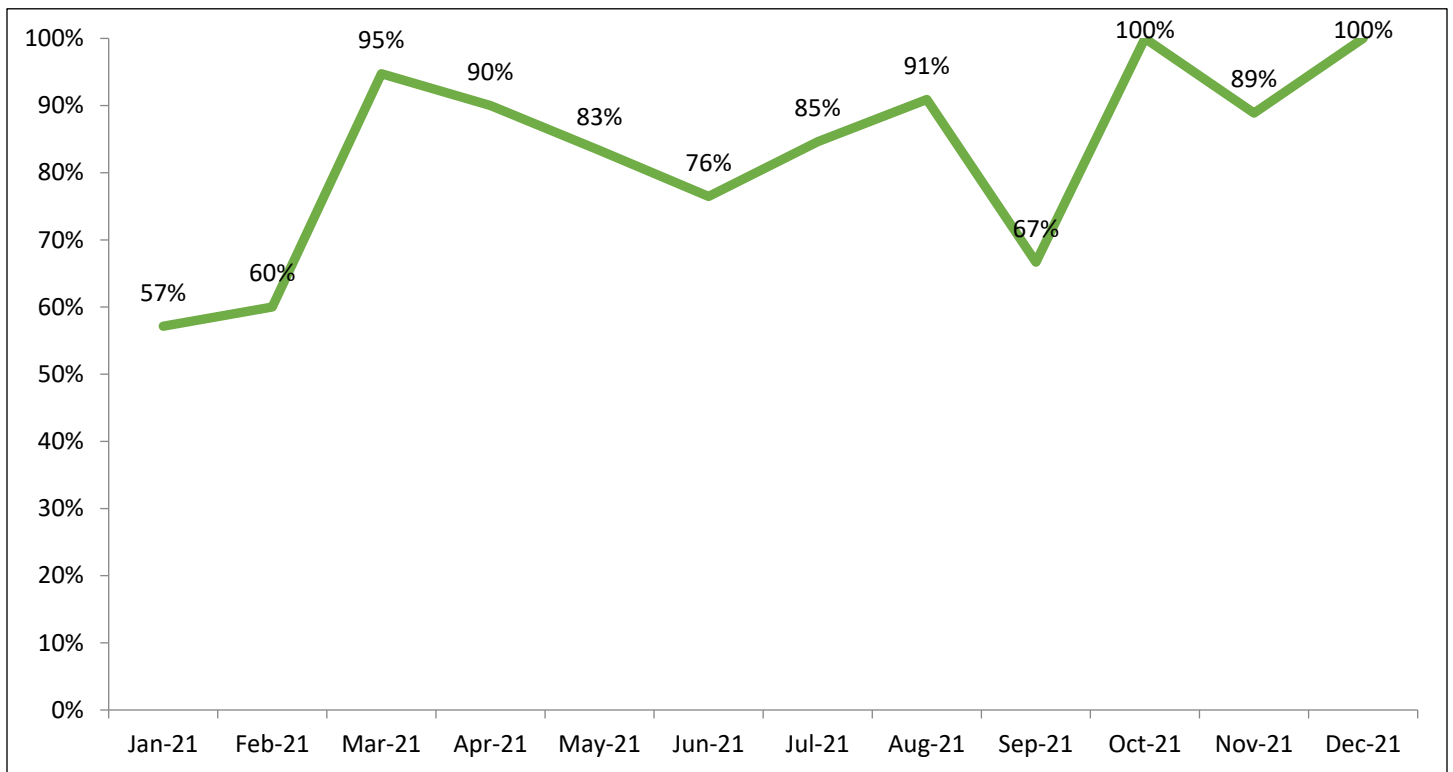


Figure 56: R1 Diversion Rate Overtime*



*Counts for diversion and diversion rates are for 1st time referrals only.



Maine Department of Corrections 2021: Juvenile Division Overview

Figure 57: R1 Diversion Rate (by Gender)

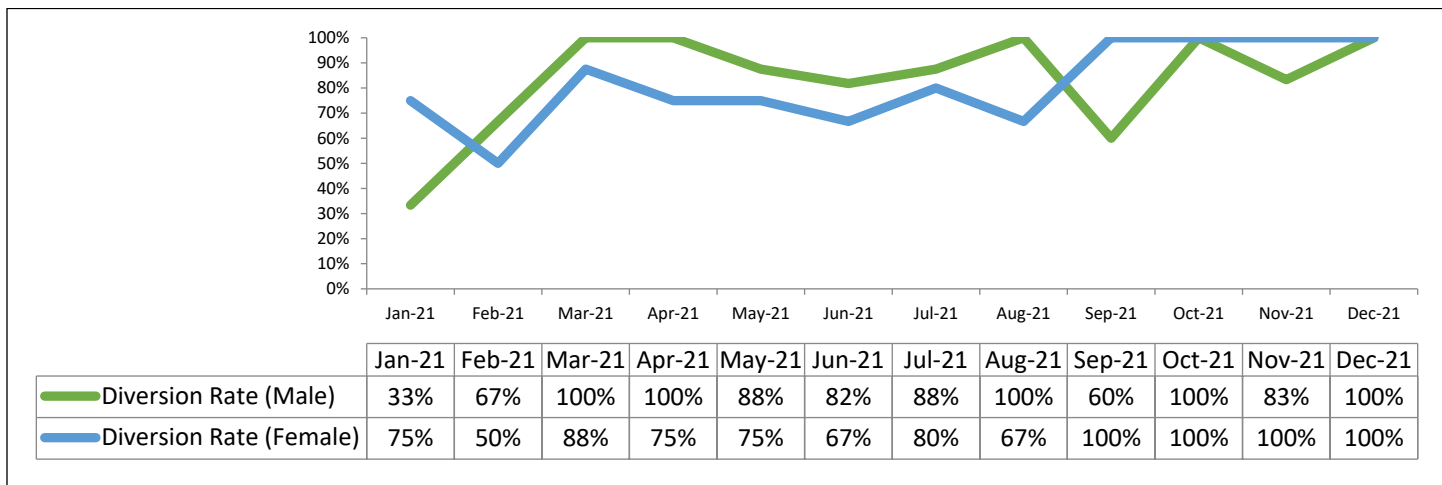
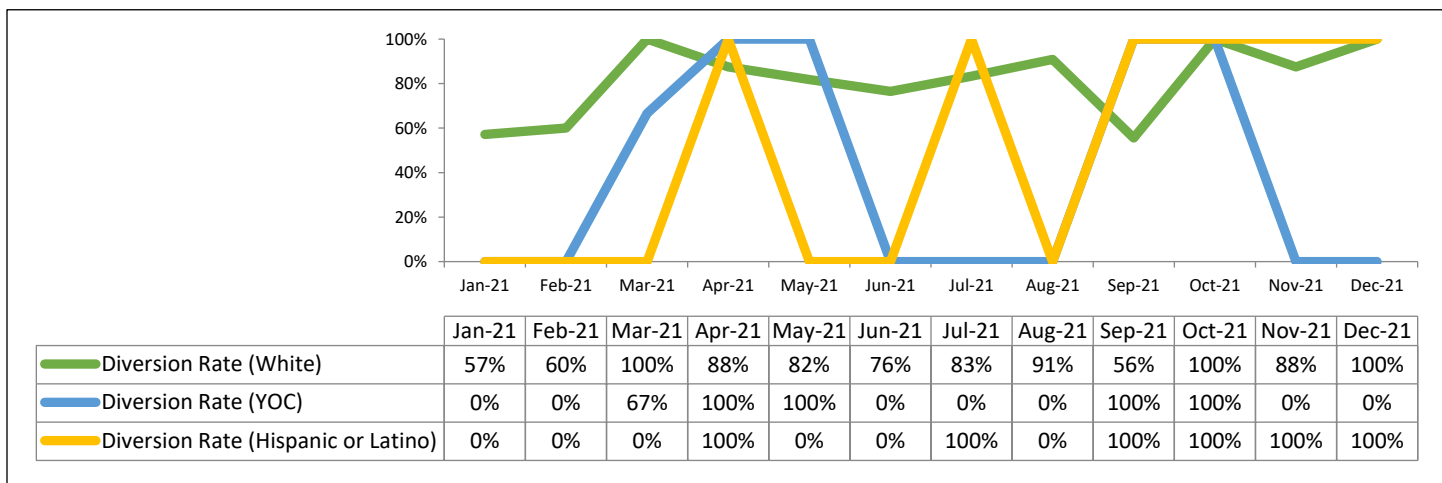
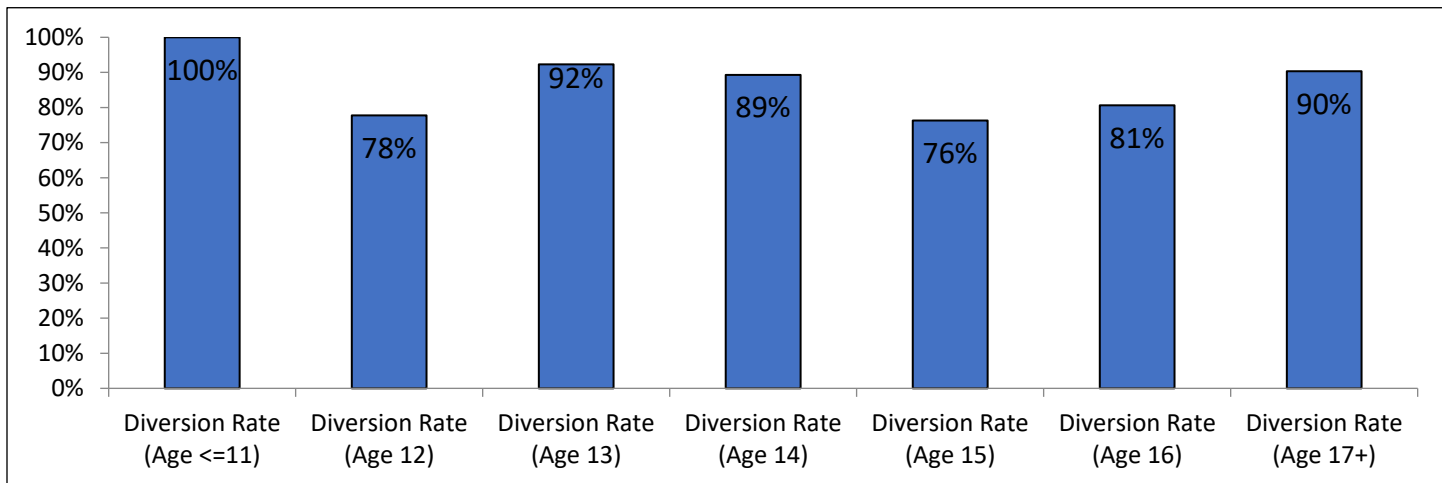


Figure 58: R1 Diversion Rate (by Race/Ethnicity)*



*For the months with 0% diversion it implies no youth in this category were divertible.

Figure 59: R1 Diversion Rate (by Age)





Maine Department of Corrections 2021: Juvenile Division Overview

Region 1 Probation

Figure 60: R1 Probation Tables Over Time

R1 Probation Population														
	Q1			Q2			Q3			Q4				
	Jan-21	Feb-21	Mar-21	Apr-21	May-21	Jun-21	Jul-21	Aug-21	Sep-21	Oct-21	Nov-21	Dec-21	YTD	Avg. Month
On Probation	38	33	31	31	33	28	29	29	29	31	32	35		
Started	1	5	3	2	0	3	5	3	3	3	4	2	34	2.8
Completed	3	5	2	0	4	1	4	3	0	0	1	2	25	2.1
Violations	1	2	5	2	1	3	2	0	1	0	1	1	19	1.6

Figure 61: R1 on Probation

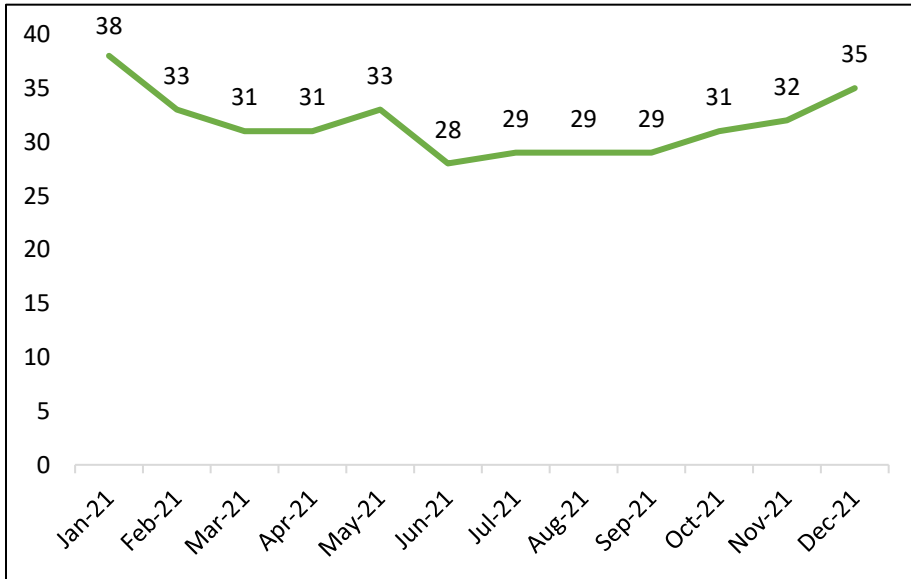
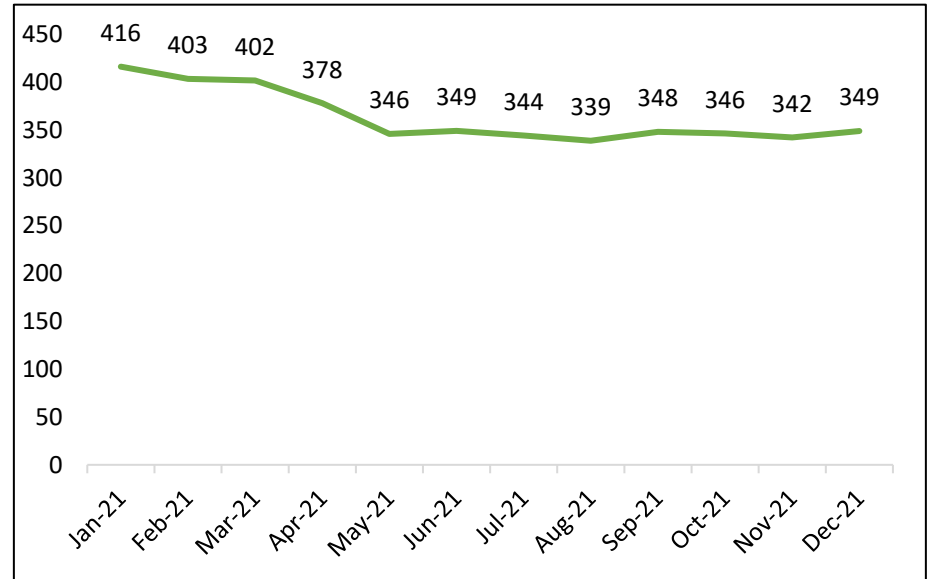


Figure 62: R1 Probation Average LOS (Days)





Maine Department of Corrections 2021: Juvenile Division Overview

Region 1 Admissions

Figure 63: R1 Shock Sentences Over Time

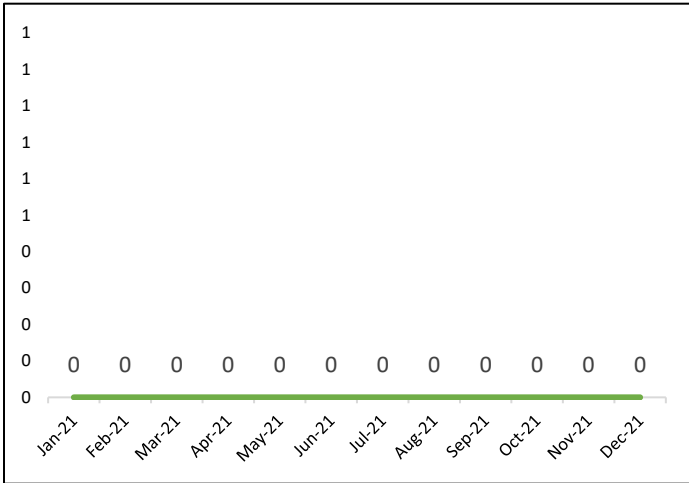


Figure 64: R1 Shock Sentences by Gender

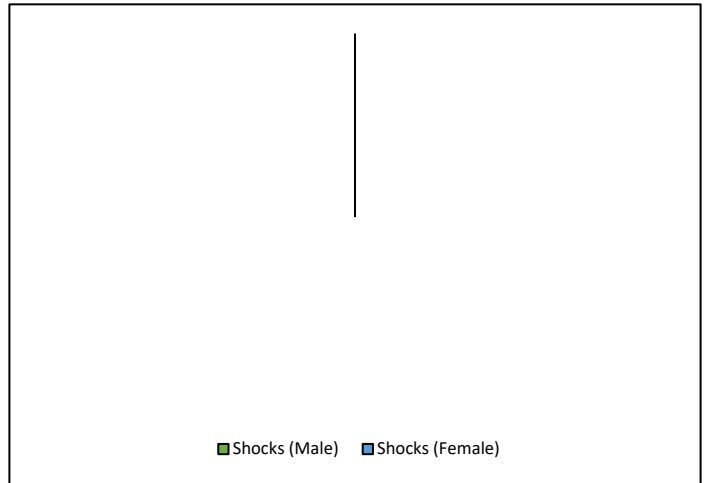


Figure 65: R1 Shock Sentences by Race/Ethnicity

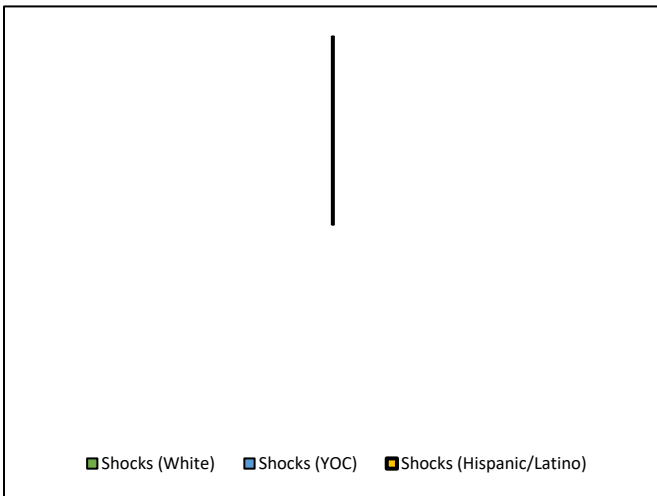
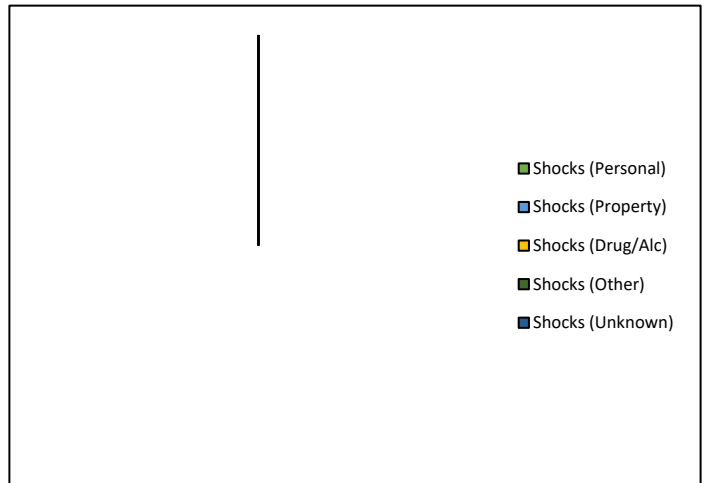


Figure 66: R1 Shock Sentences by Offense Type





Maine Department of Corrections 2021: Juvenile Division Overview

Figure 67: R1 Detentions Over Time

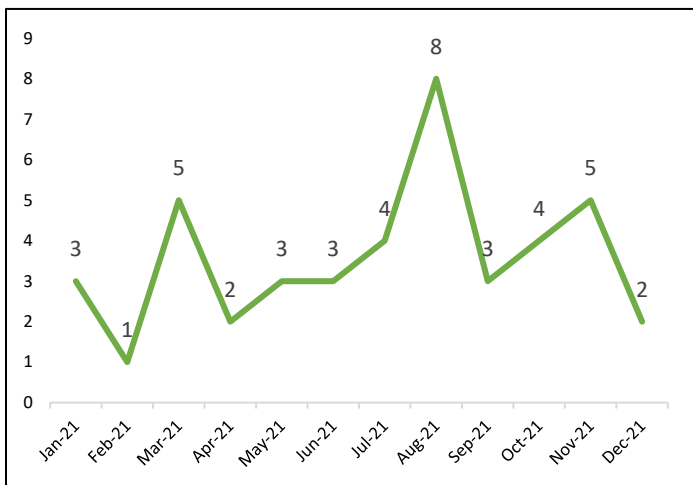


Figure 68: R1 Detentions by Gender

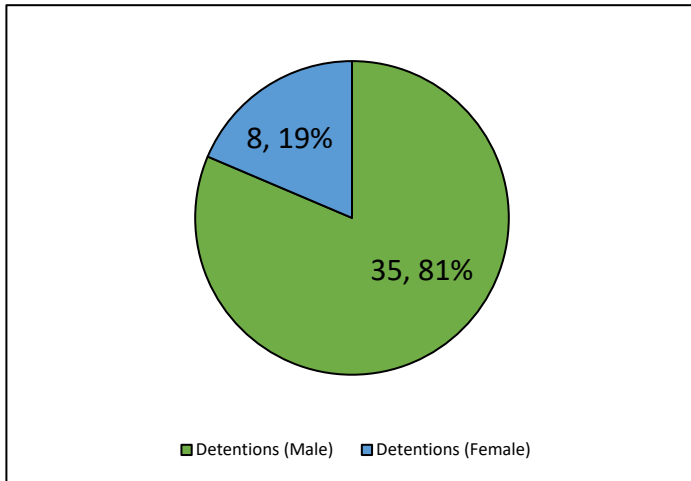


Figure 69: R1 Detentions by Race/Ethnicity

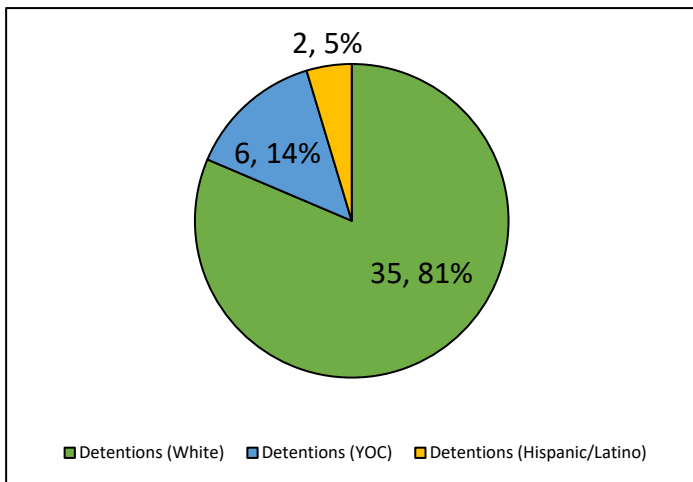
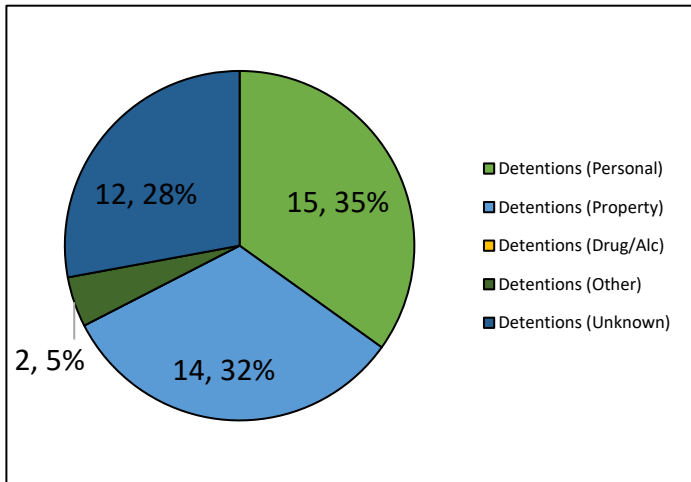


Figure 70: R1 Detentions by Offense Type





Maine Department of Corrections 2021: Juvenile Division Overview

Figure 71: R1 Commitments Over Time

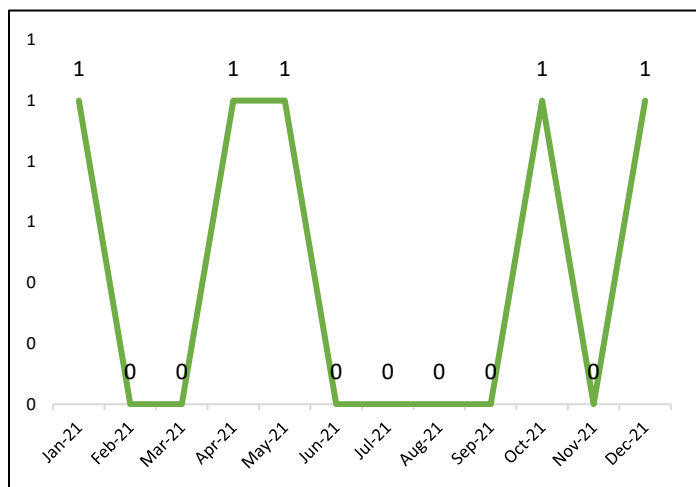


Figure 72: Commitments by Gender

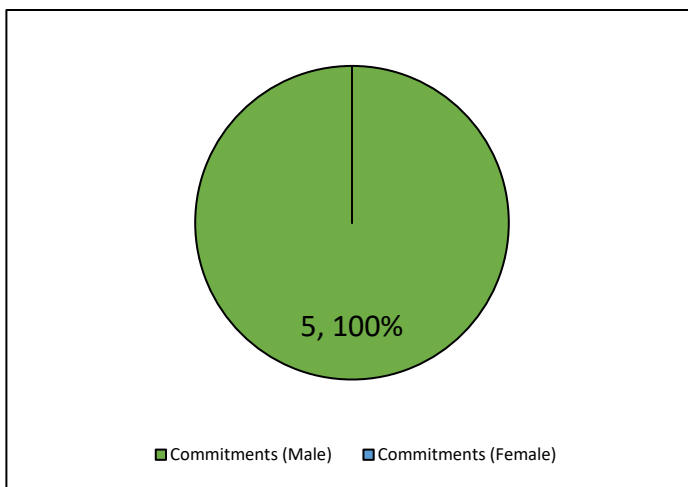


Figure 73: R1 Commitments by Race/Ethnicity

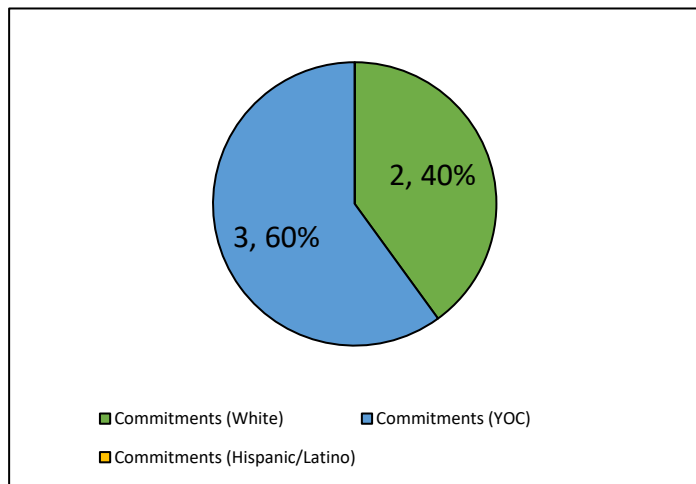
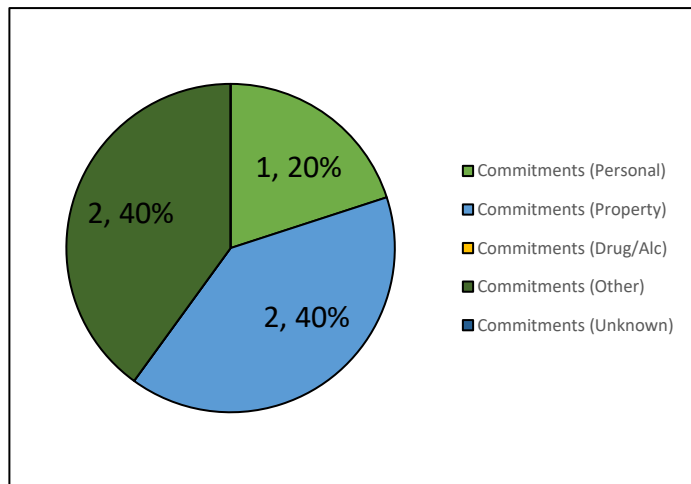


Figure 74: R1 Commitments by Offense Type





Maine Department of Corrections 2021: Juvenile Division Overview

Region 2 Referrals

Figure 75: R2 Referrals (All and 1st Time)

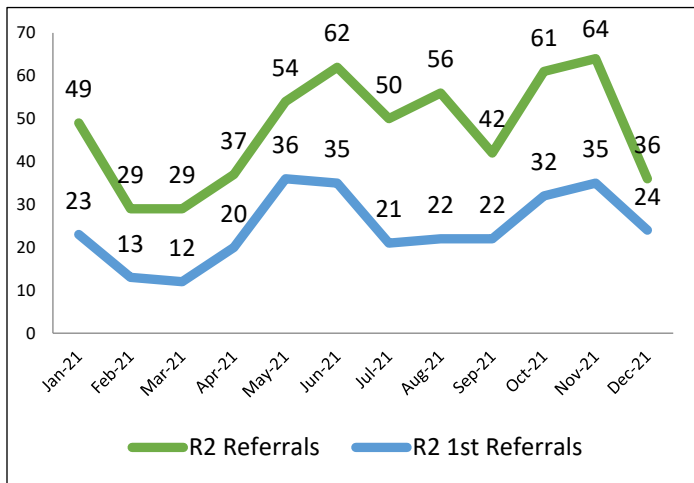


Figure 76: R2 All Referrals (by County)

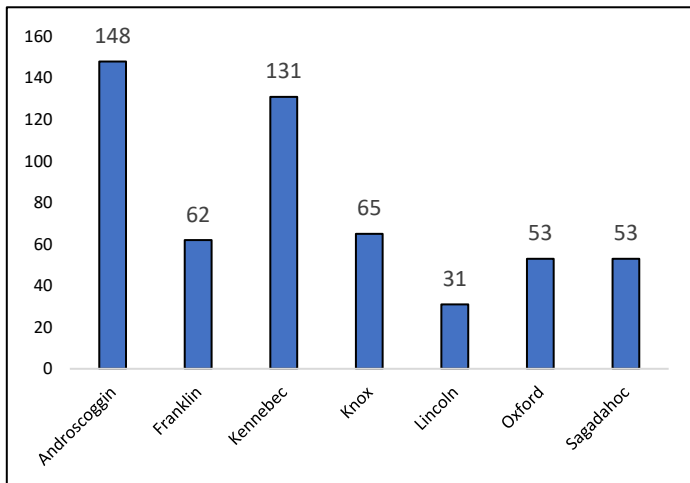


Figure 77: R2 All Referrals (by Offense Type)

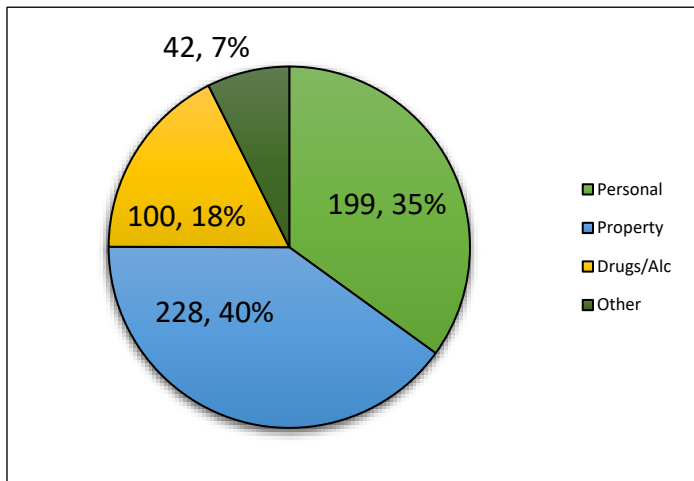
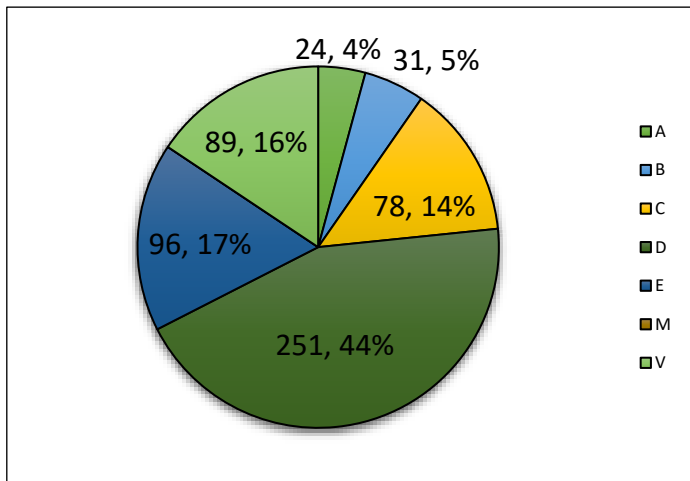


Figure 78: R2 All Referrals (by Offense Class)





Maine Department of Corrections 2021: Juvenile Division Overview

Region 2 Diversions

Figure 79: R2 Diversions Overtime*

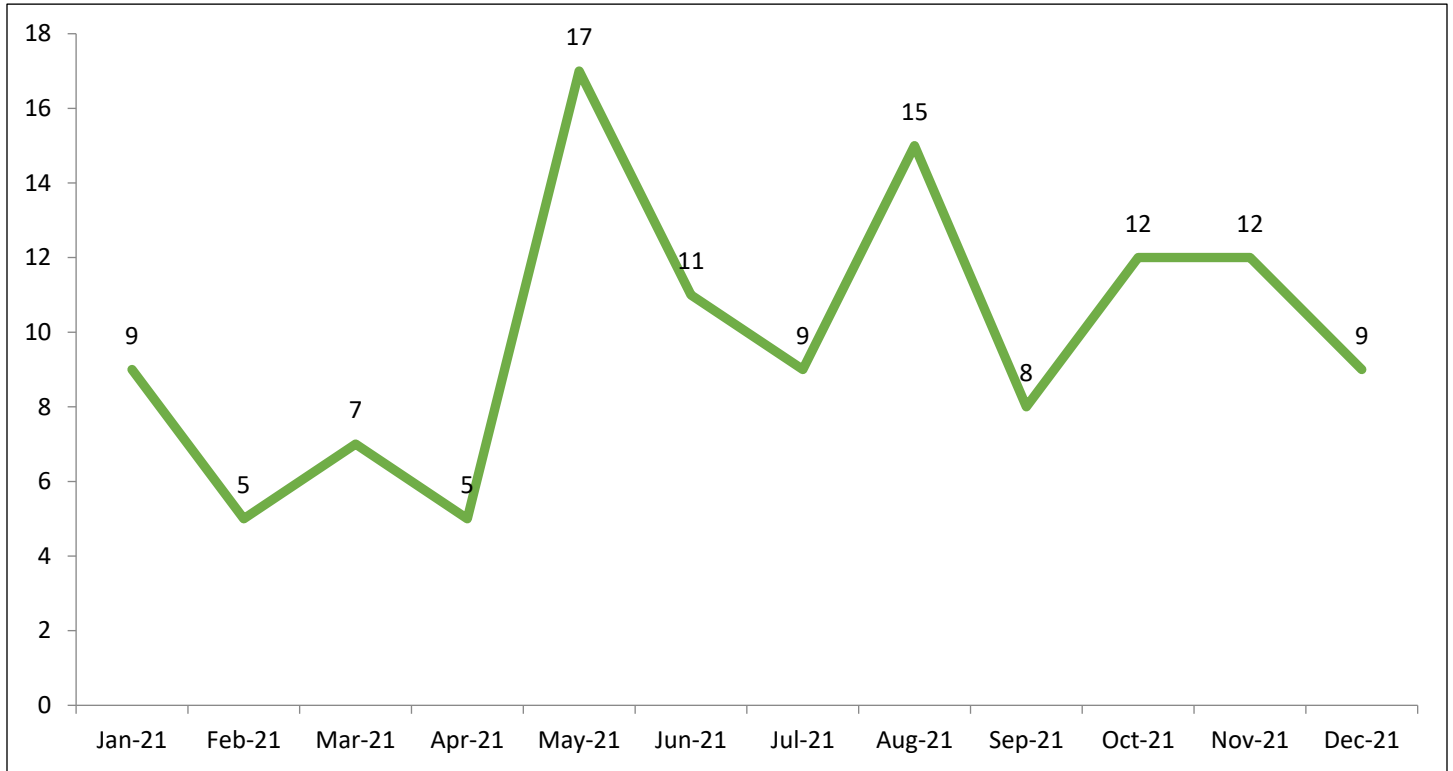
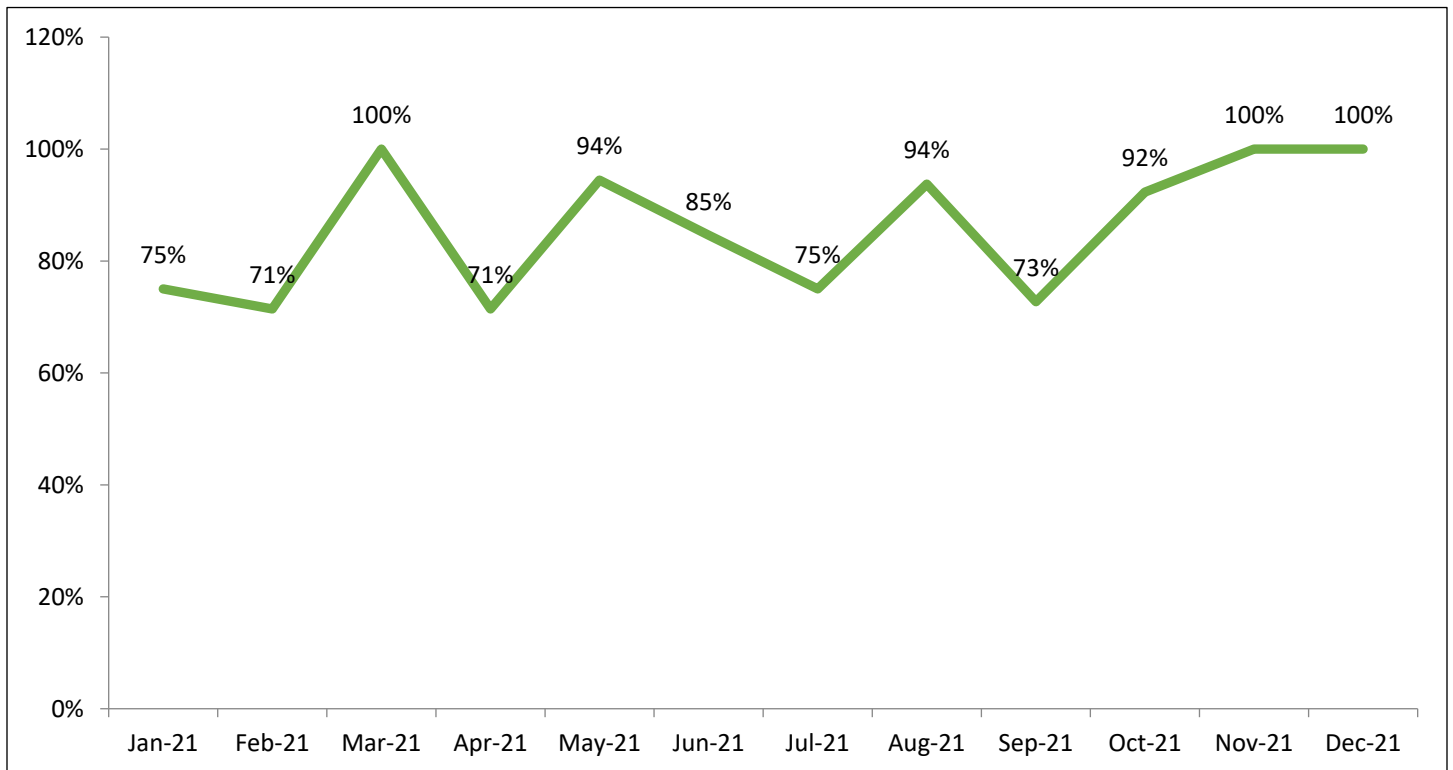


Figure 80: R2 Diversion Rate Overtime*



*Counts for diversion and diversion rates are for 1st time referrals only.



Maine Department of Corrections 2021: Juvenile Division Overview

Figure 81: R2 Diversion Rate (by Gender)

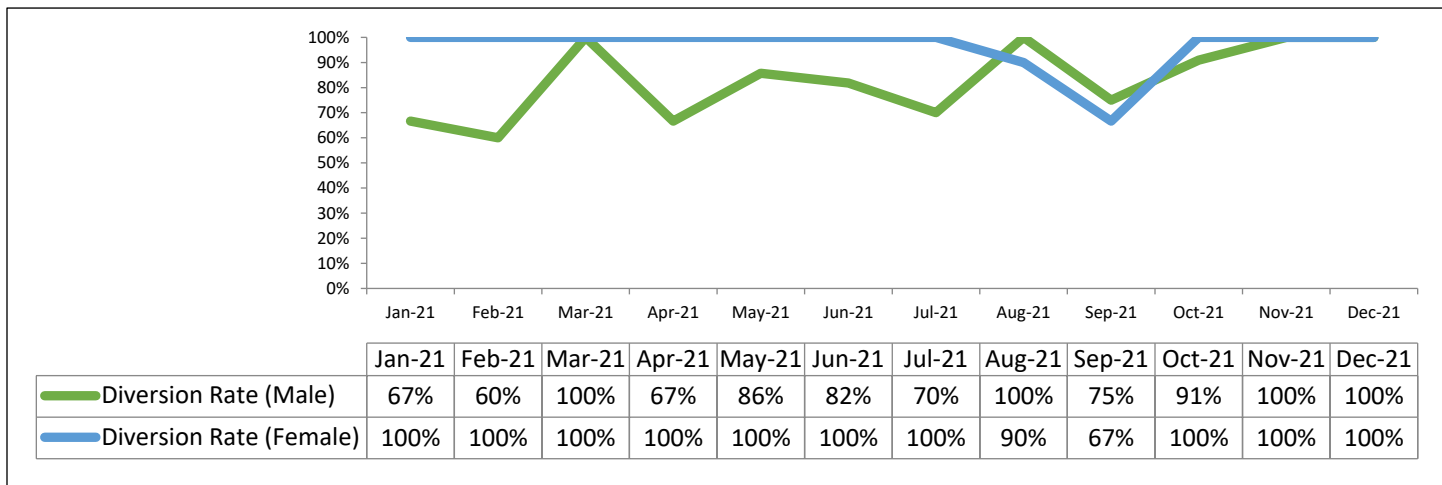
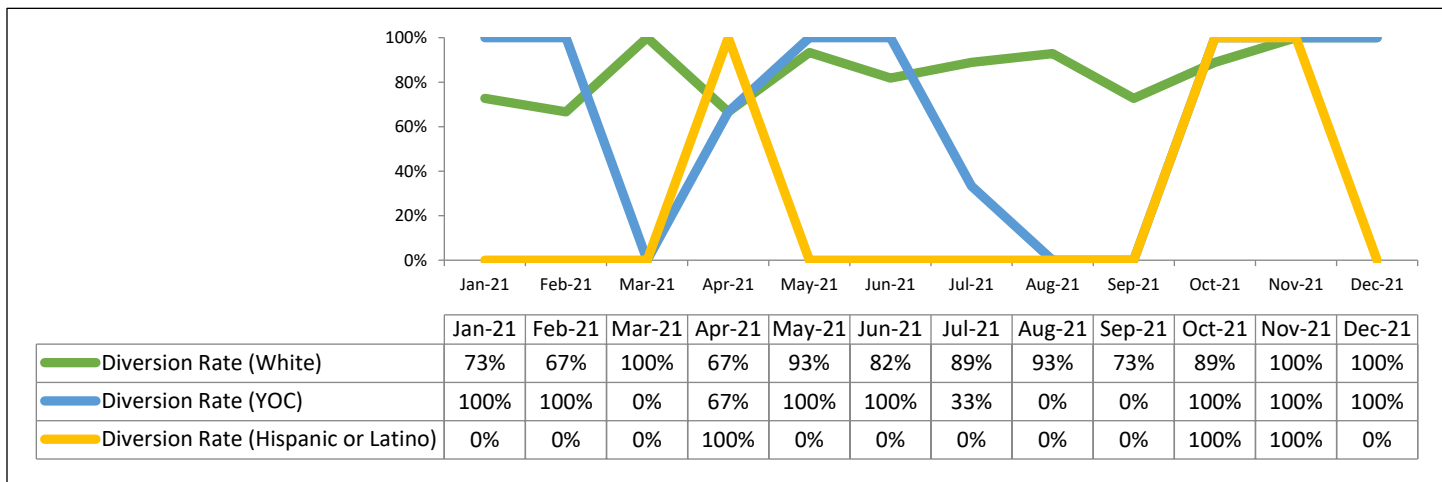
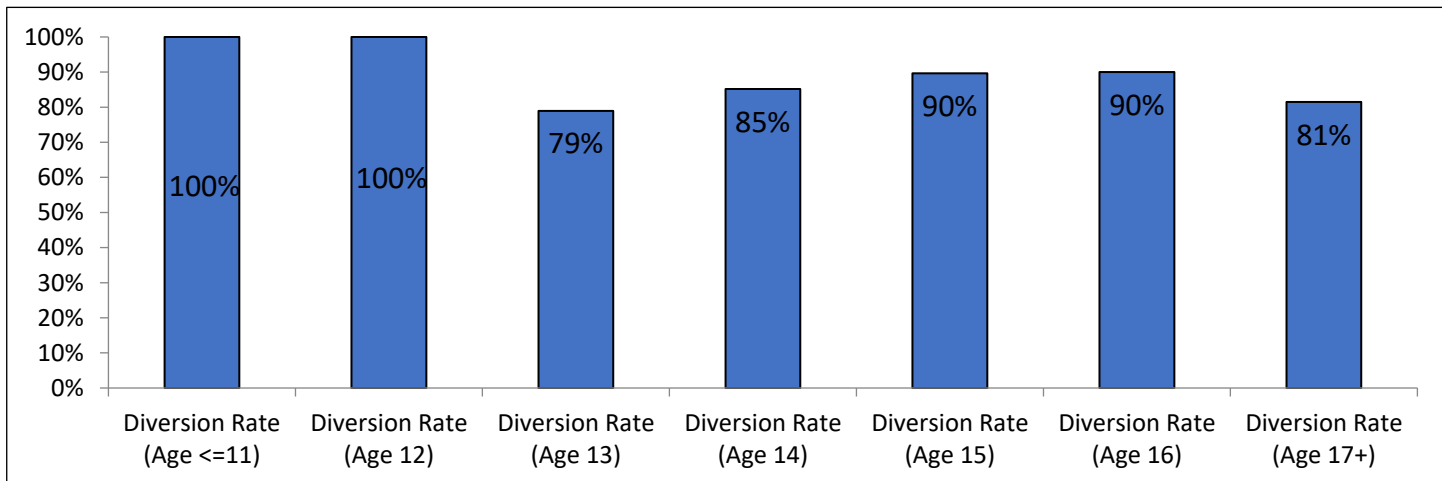


Figure 82: R2 Diversion Rate (by Race/Ethnicity)*



*For the months with 0% diversion it implies no youth in this category were divertible.

Figure 83: R2 Diversion Rate (by Age)





Maine Department of Corrections 2021: Juvenile Division Overview

Region 2 Probation

Figure 84: R2 Probation Tables Over Time

R2 Probation Population														
	Q1			Q2			Q3			Q4			YTD	Avg. Month
	Jan-21	Feb-21	Mar-21	Apr-21	May-21	Jun-21	Jul-21	Aug-21	Sep-21	Oct-21	Nov-21	Dec-21		
On Probation	17	15	14	19	20	20	22	21	18	19	20	19		
Started	0	1	6	2	0	3	0	0	4	3	1	0	20	1.7
Completed	2	2	1	1	0	0	0	2	0	1	1	4	14	1.2
Violations	1	0	2	1	1	0	2	3	1	2	1	0	14	1.2

Figure 85: R2 on Probation

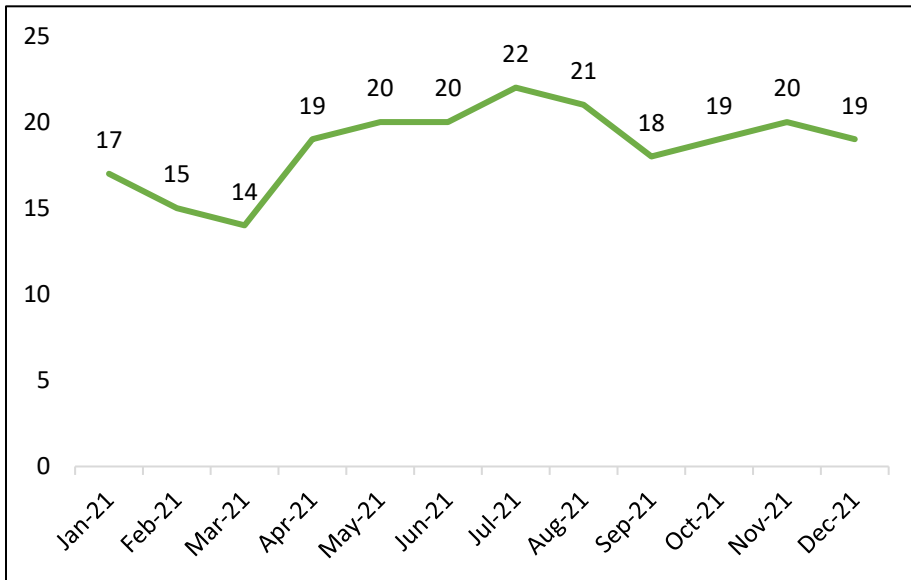
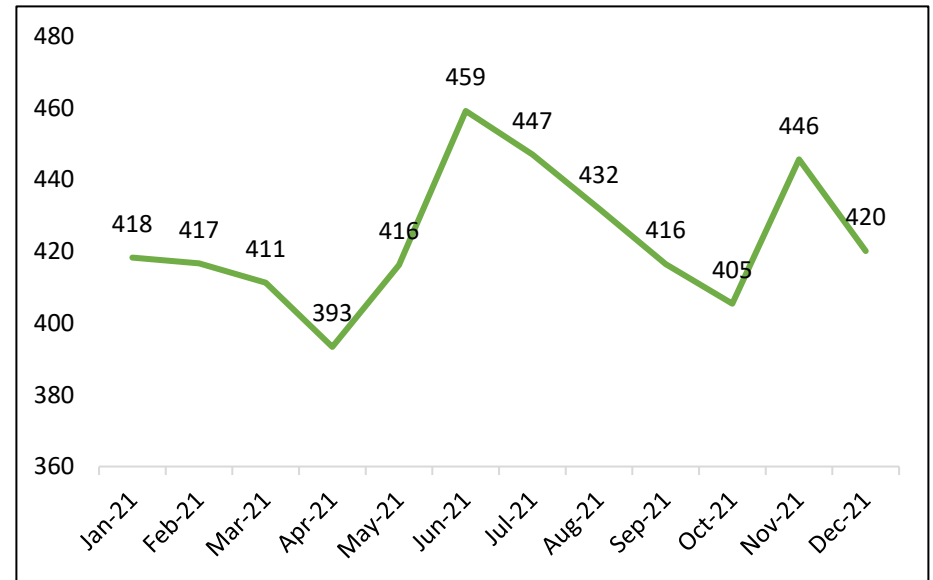


Figure 86: R2 Probation Average LOS (Days)





Maine Department of Corrections 2021: Juvenile Division Overview

Region 2 Admissions

Figure 87: R2 Shock Sentences Over Time

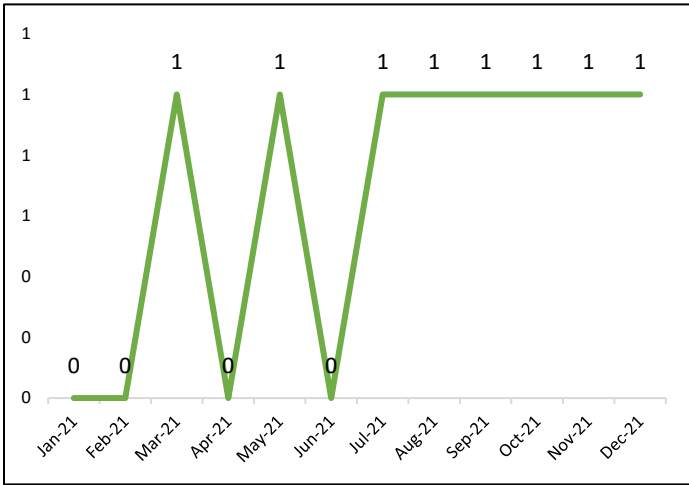


Figure 88: R2 Shock Sentences by Gender

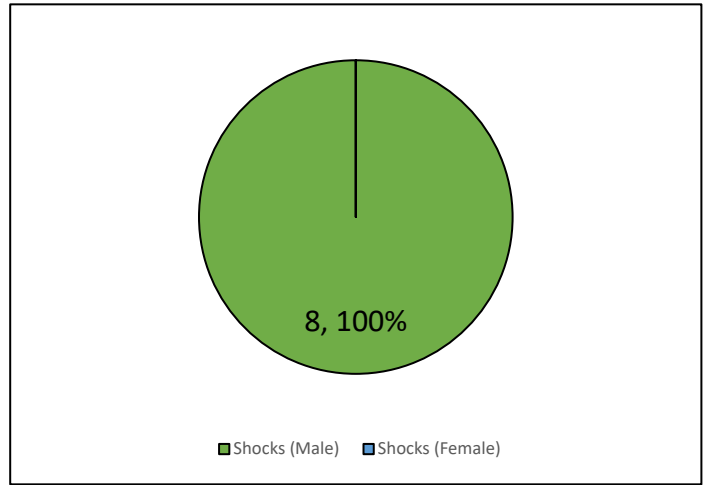


Figure 89: R2 Shock Sentences by Race/Ethnicity

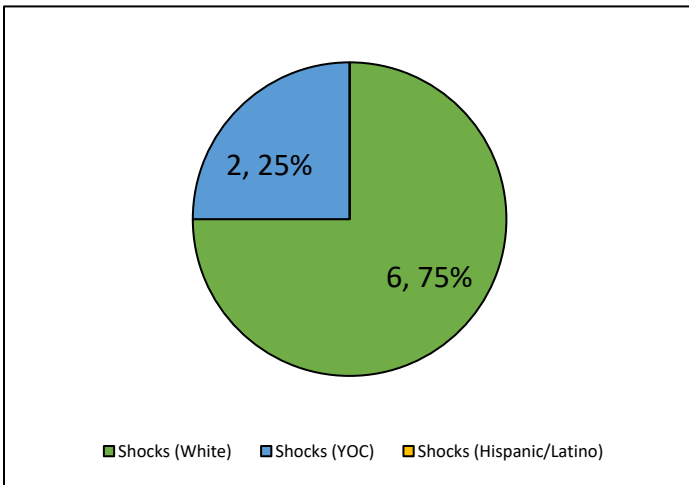
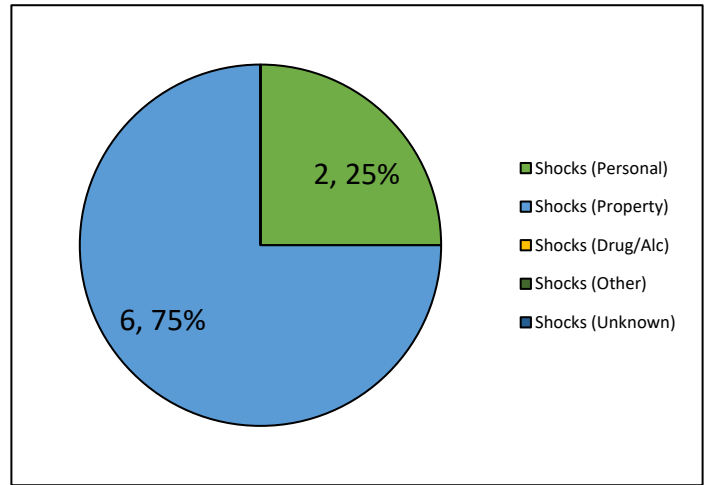


Figure 90: R2 Shock Sentences by Offense Type





Maine Department of Corrections 2021: Juvenile Division Overview

Figure 91: R2 Detentions Over Time

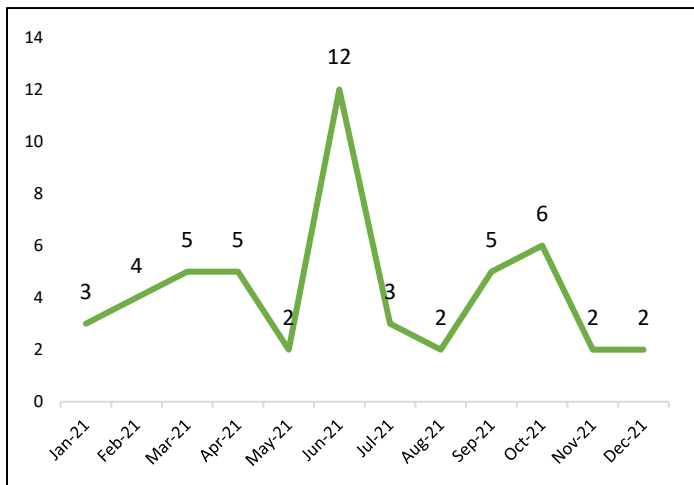


Figure 92: R2 Detentions by Gender

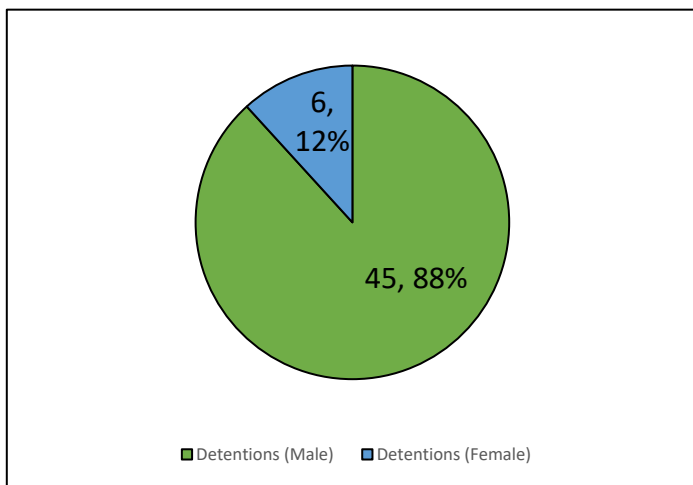


Figure 93: R2 Detentions by Race/Ethnicity

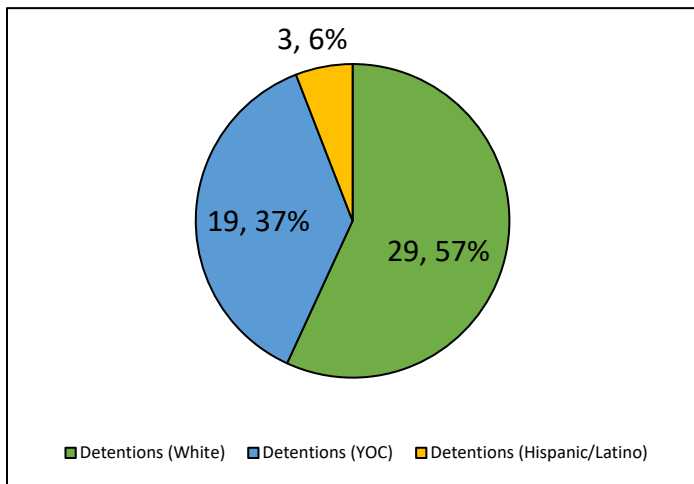
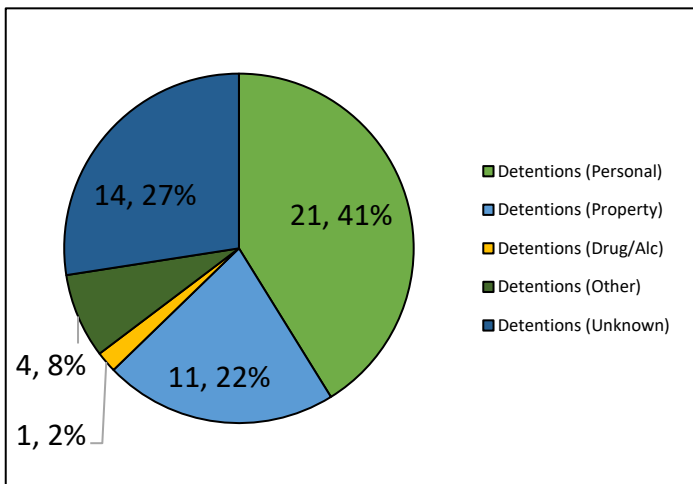


Figure 94: R2 Detentions by Offense Type





Maine Department of Corrections 2021: Juvenile Division Overview

Figure 95: R2 Commitments Over Time

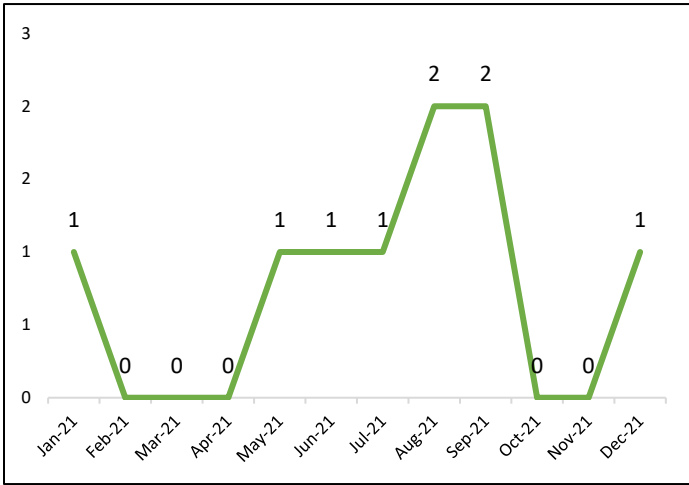


Figure 96: Commitments by Gender

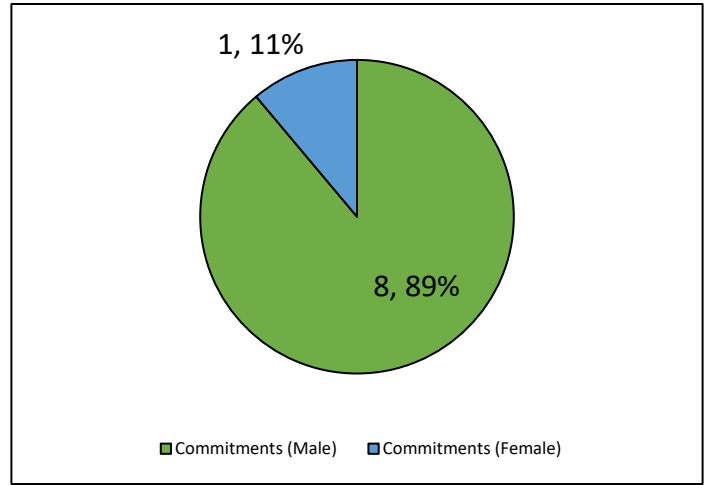


Figure 97: R2 Commitments by Race/Ethnicity

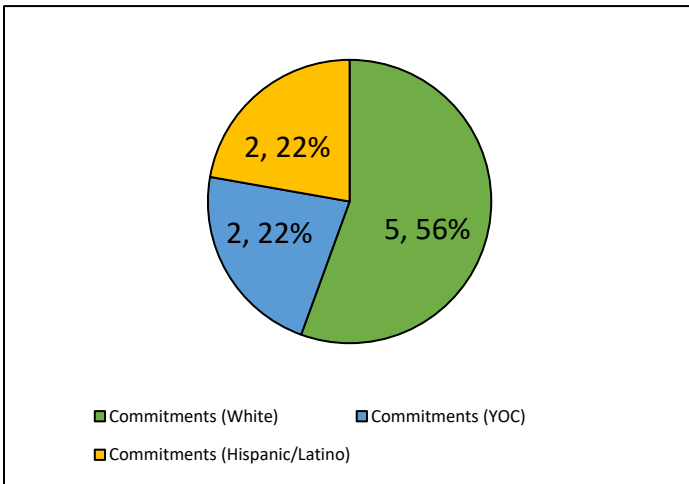
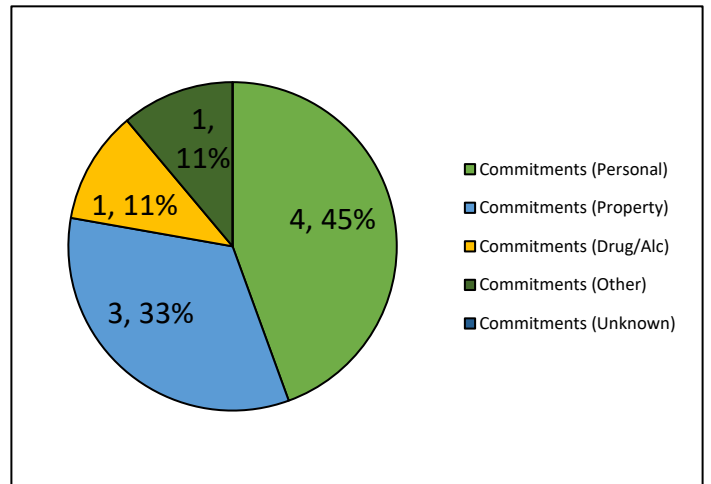


Figure 98: R2 Commitments by Offense Type





Maine Department of Corrections 2021: Juvenile Division Overview

Region 3 Referrals

Figure 99: R3 Referrals (All and 1st Time)

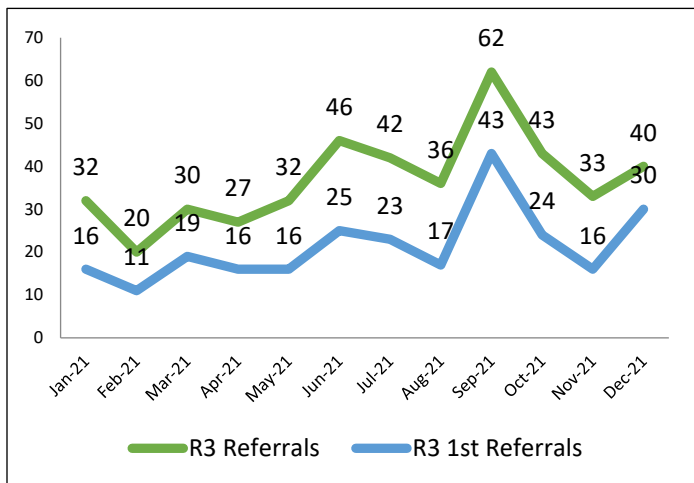


Figure 100: R3 All Referrals (by County)

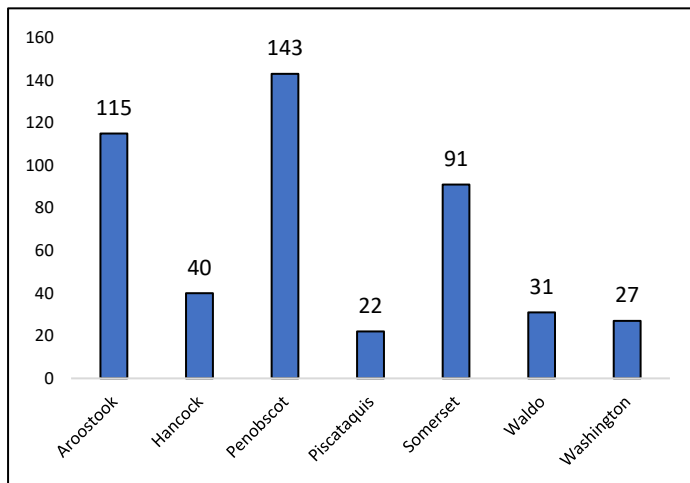


Figure 101: R3 All Referrals (by Offense Type)

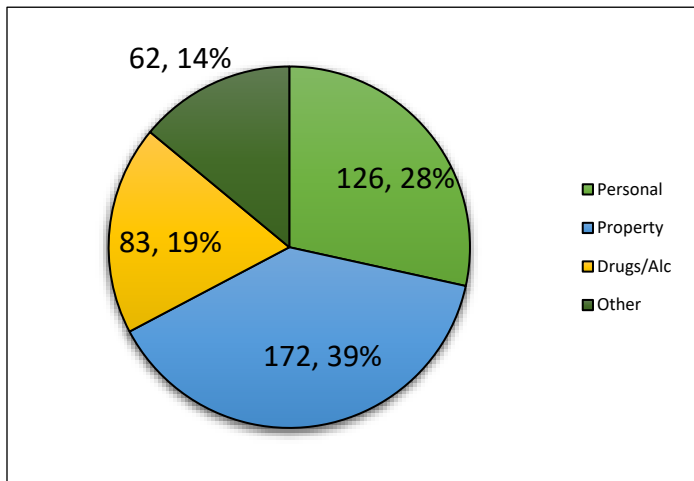
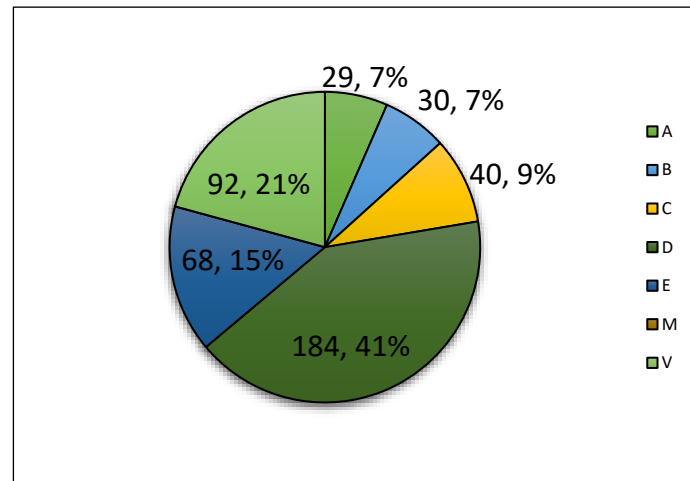


Figure 102: R3 All Referrals (by Offense Class)





Maine Department of Corrections 2021: Juvenile Division Overview

Region 3 Diversions

Figure 103: R3 Diversions Overtime*

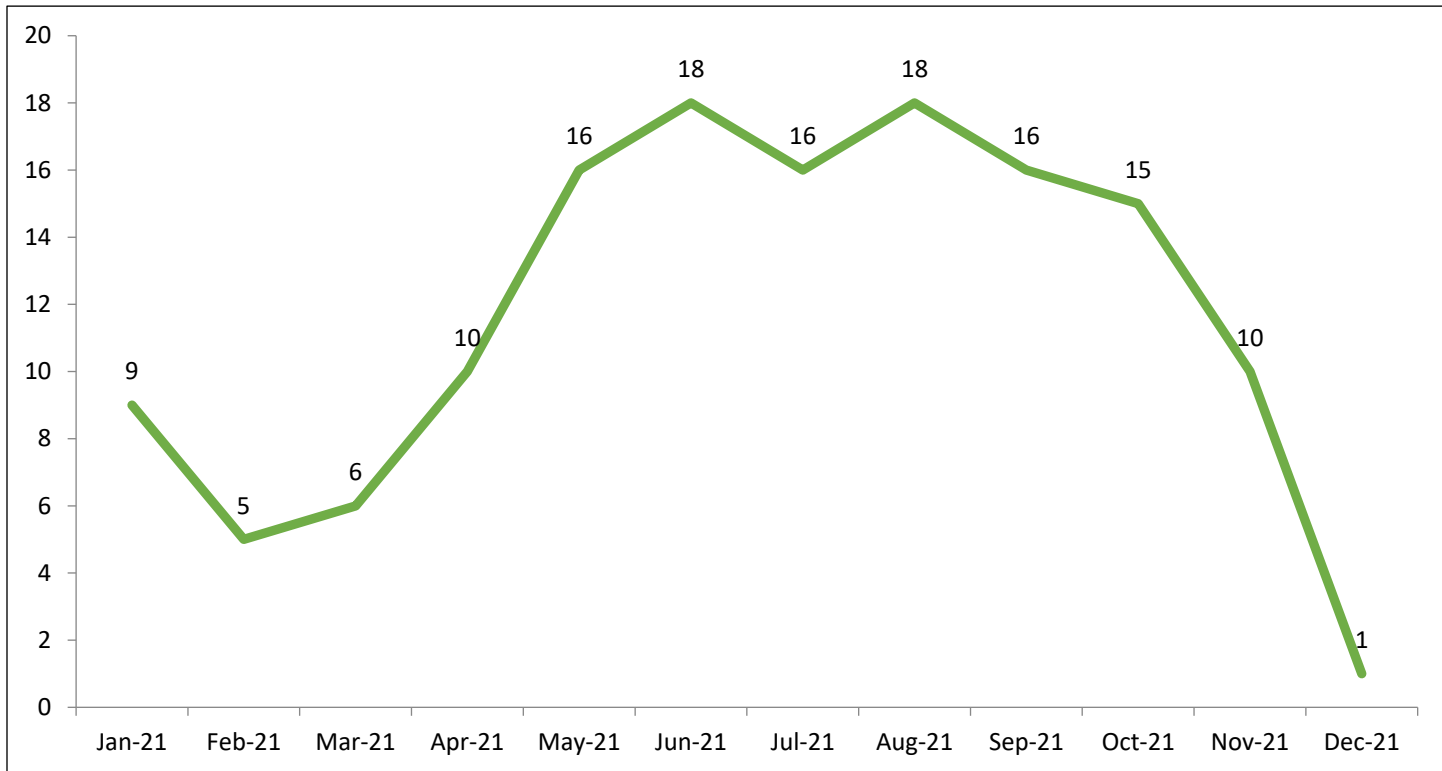
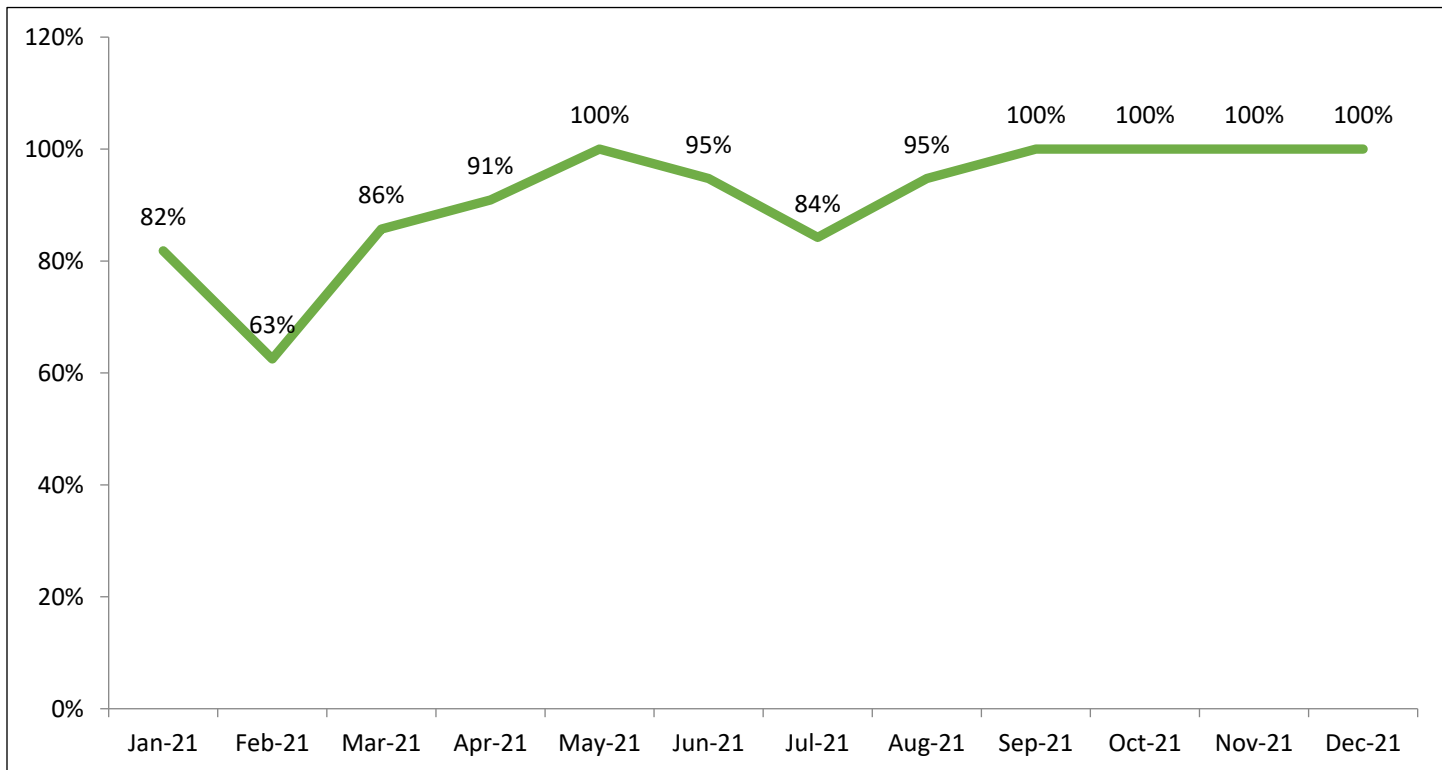


Figure 104: R3 Diversion Rate Overtime*



*Counts for diversion and diversion rates are for 1st time referrals only.



Maine Department of Corrections 2021: Juvenile Division Overview

Figure 105: R3 Diversion Rate (by Gender)

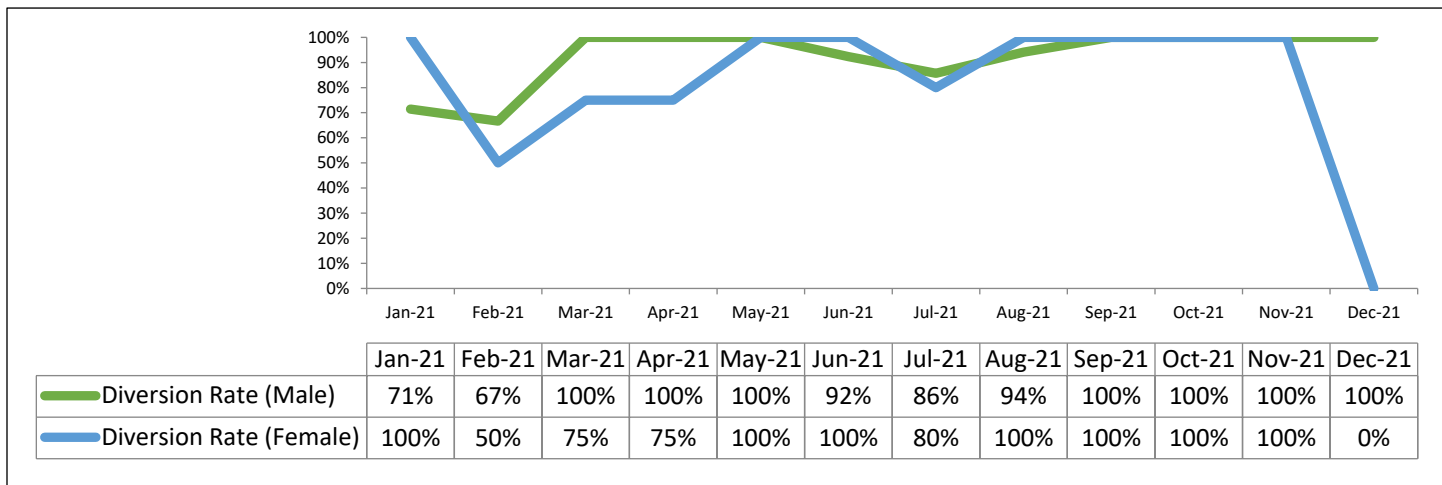
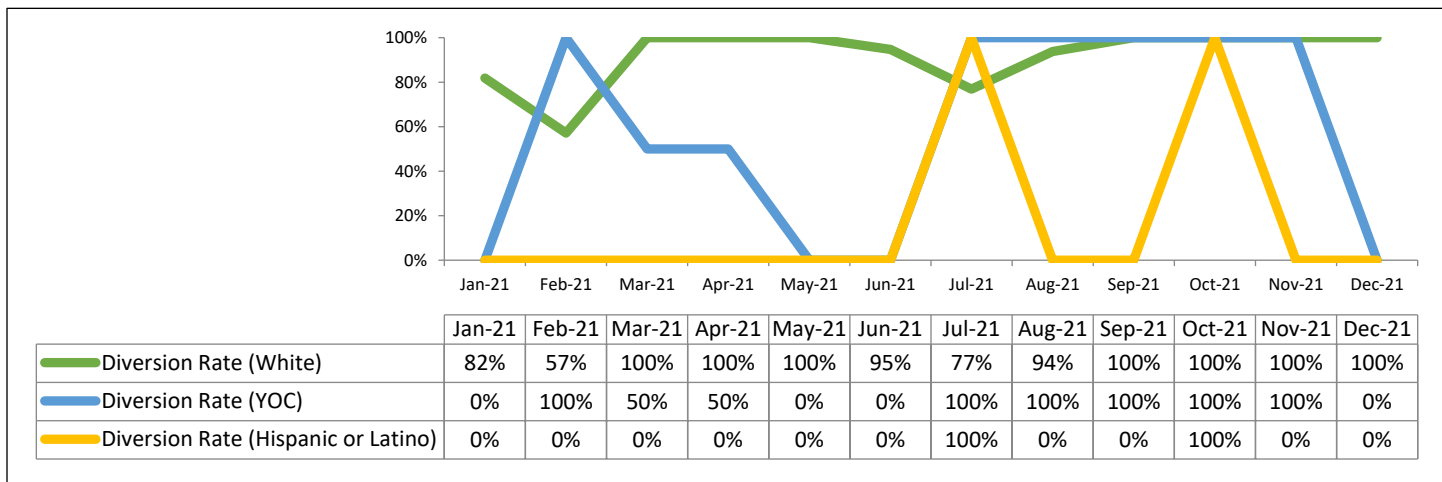
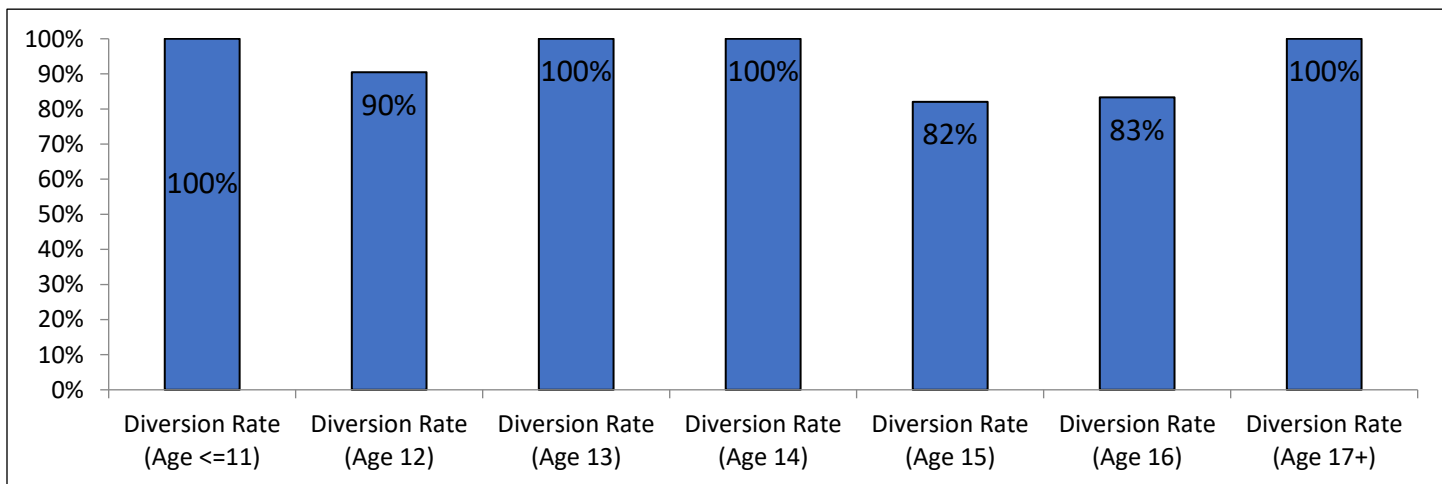


Figure 106: R3 Diversion Rate (by Race/Ethnicity)*



*For the months with 0% diversion it implies no youth in this category were divertible.

Figure 107: R3 Diversion Rate (by Age)





Maine Department of Corrections 2021: Juvenile Division Overview

Region 3 Probation

Figure 108: R3 Probation Tables Over Time

R3 Probation Population														
	Q1			Q2			Q3			Q4				
	Jan-21	Feb-21	Mar-21	Apr-21	May-21	Jun-21	Jul-21	Aug-21	Sep-21	Oct-21	Nov-21	Dec-21	YTD	Avg. Month
On Probation	44	44	41	43	44	47	44	41	41	40	39	39		
Started	4	0	2	4	4	2	1	5	3	1	4	3	33	2.8
Completed	3	1	0	2	1	2	4	3	1	3	4	3	27	2.3
Violations	4	2	4	0	2	5	0	1	1	1	0	1	21	1.8

Figure 109: R3 on Probation

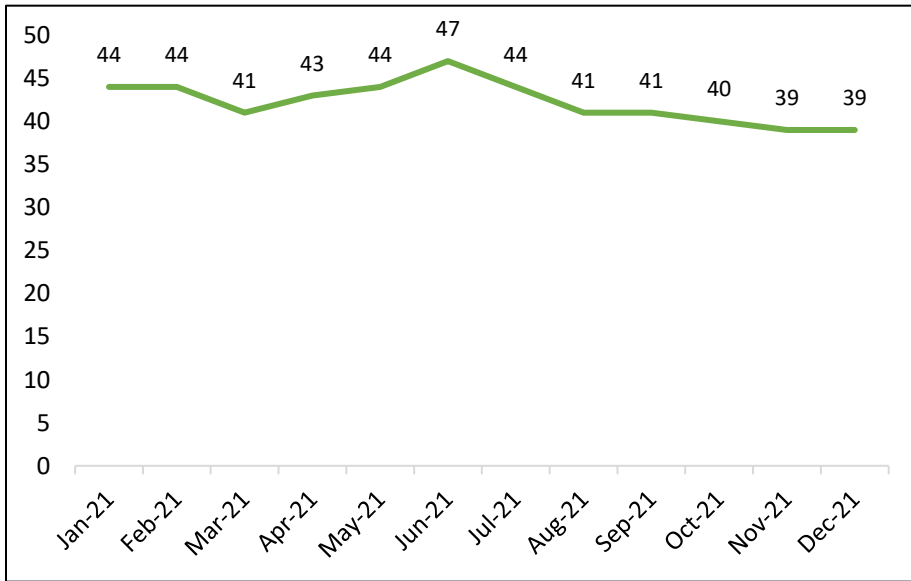
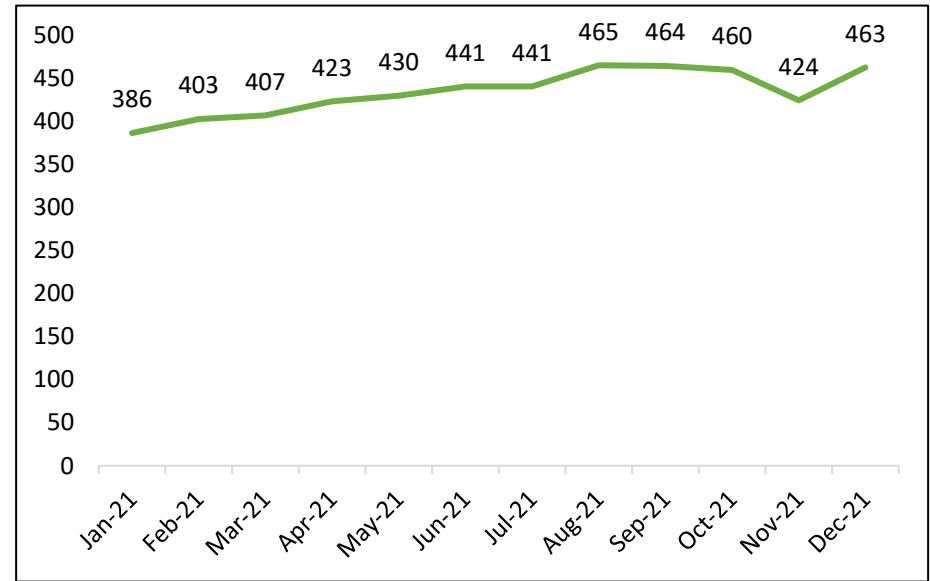


Figure 110: R3 Probation Average LOS (Days)





Maine Department of Corrections 2021: Juvenile Division Overview

Region 3 Admissions

Figure 111: R3 Shock Sentences Over Time

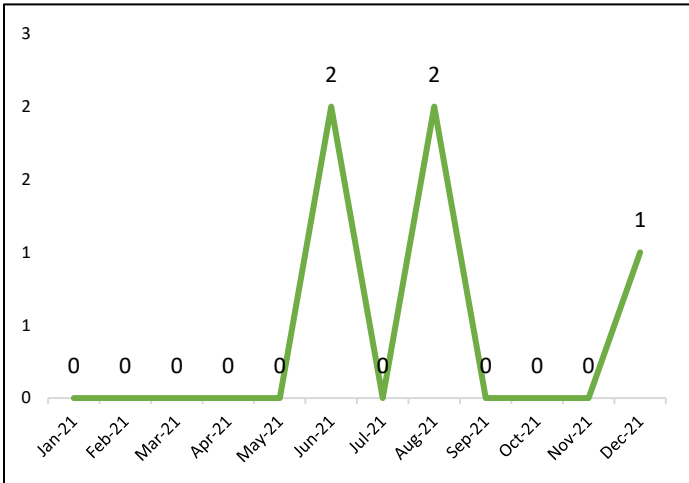


Figure 112: R3 Shock Sentences by Gender

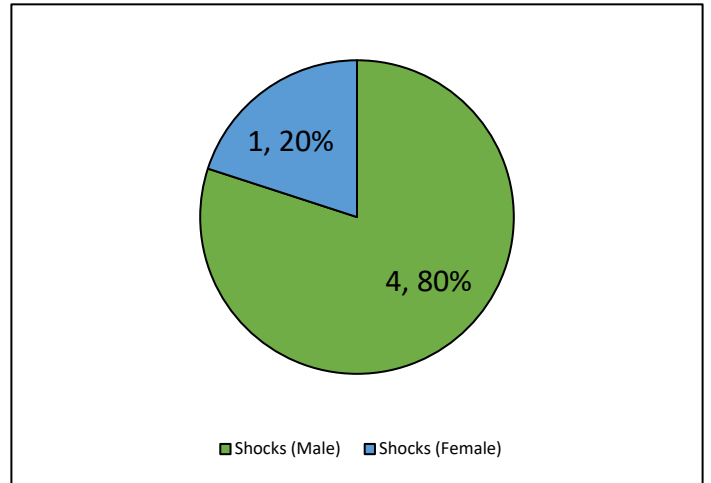


Figure 113: R3 Shock Sentences by Race/Ethnicity

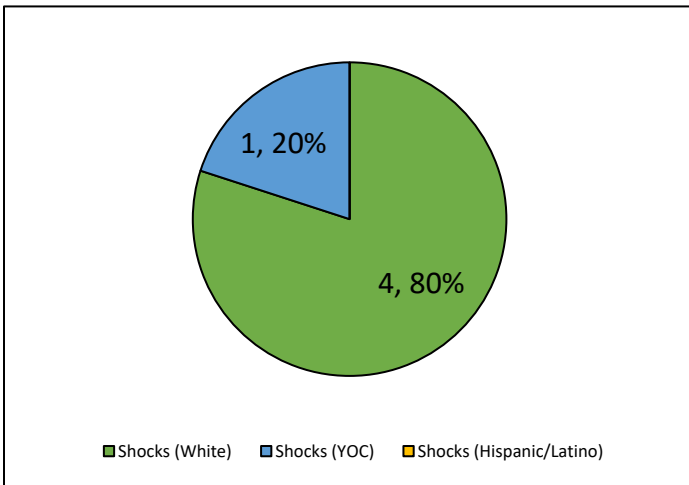
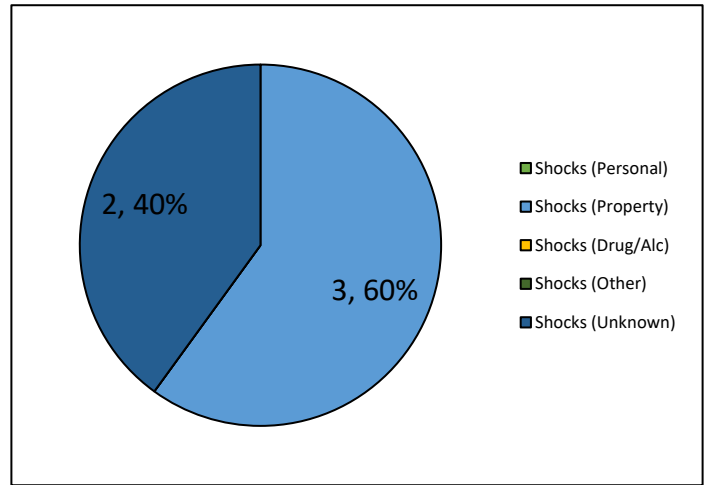


Figure 114: R3 Shock Sentences by Offense Type





Maine Department of Corrections 2021: Juvenile Division Overview

Figure 115: R3 Detentions Over Time

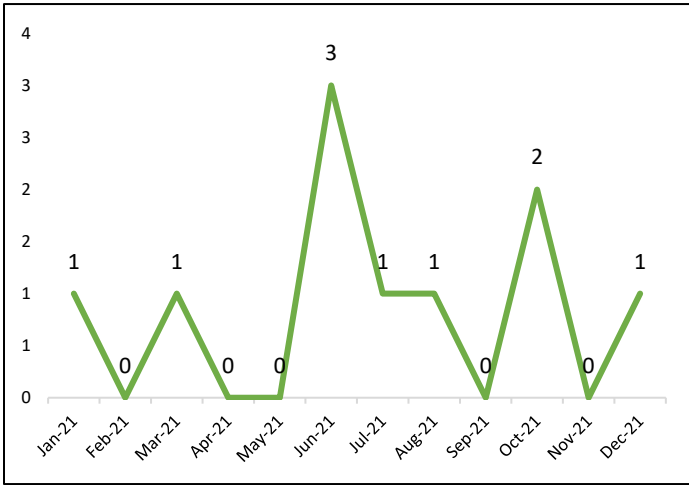


Figure 116: R3 Detentions by Gender

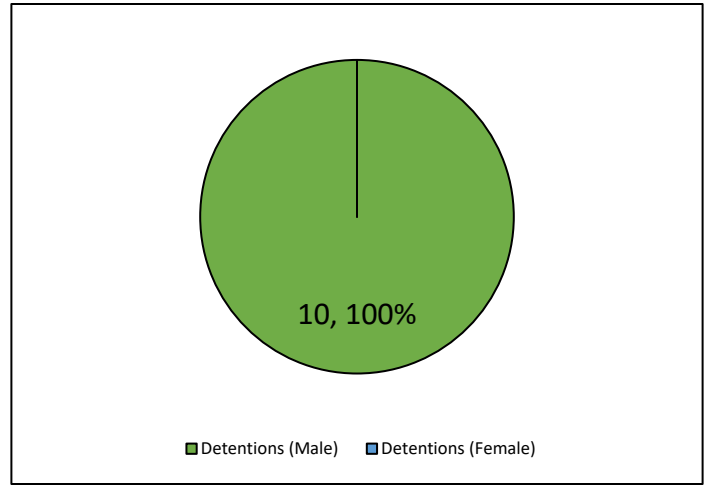


Figure 117: R3 Detentions by Race/Ethnicity

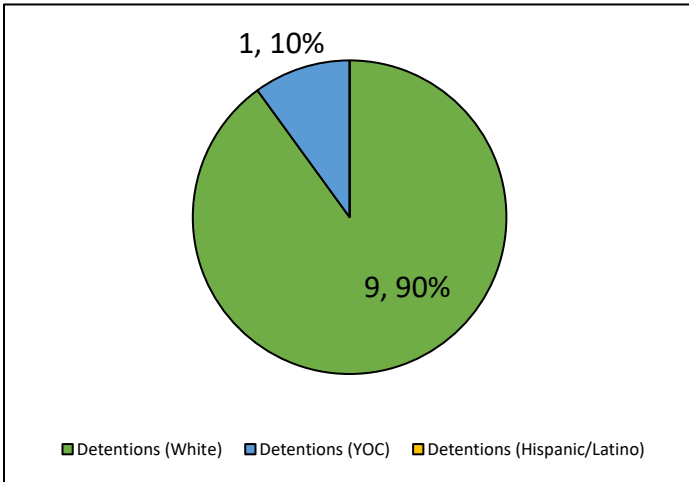
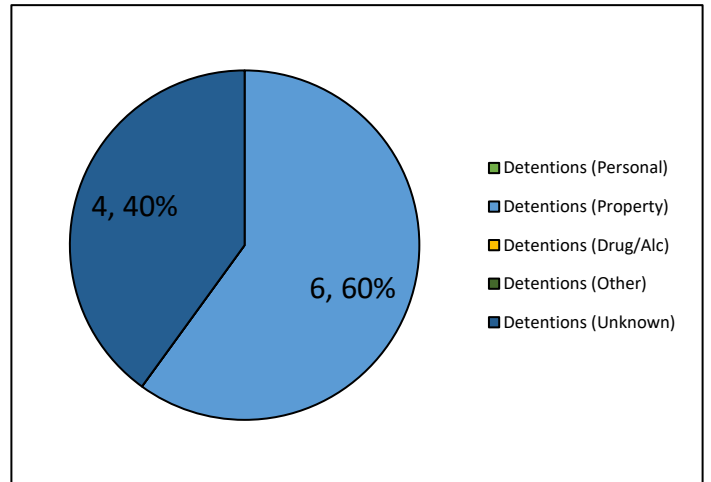


Figure 118: R3 Detentions by Offense Type





Maine Department of Corrections 2021: Juvenile Division Overview

Figure 119: R3 Commitments Over Time

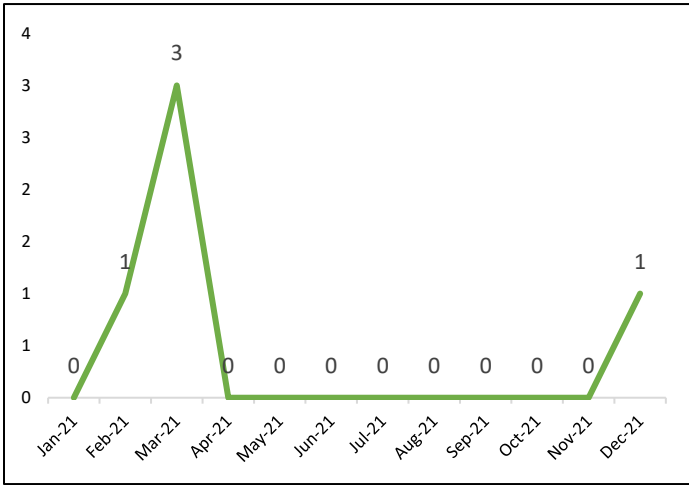


Figure 120: Commitments by Gender

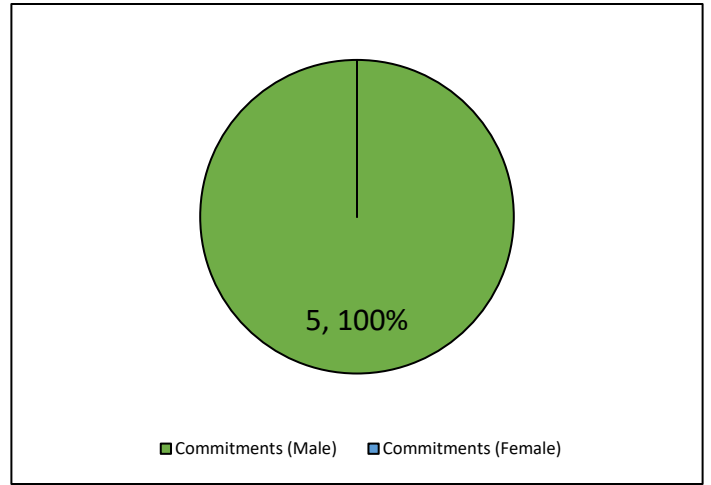


Figure 121: R3 Commitments by Race/Ethnicity

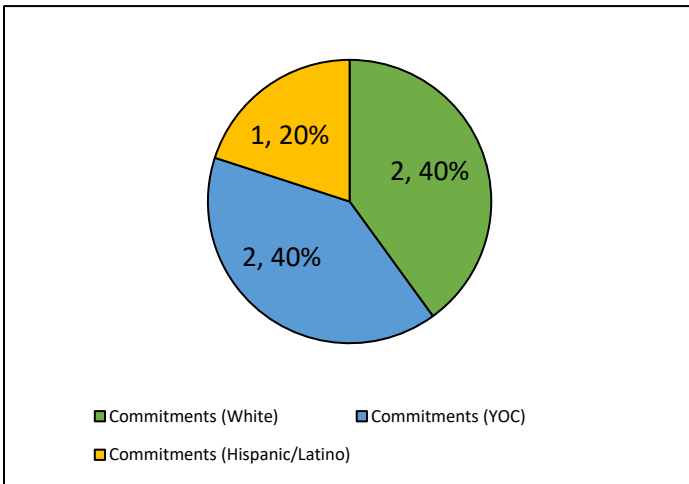


Figure 122: R3 Commitments by Offense Type

