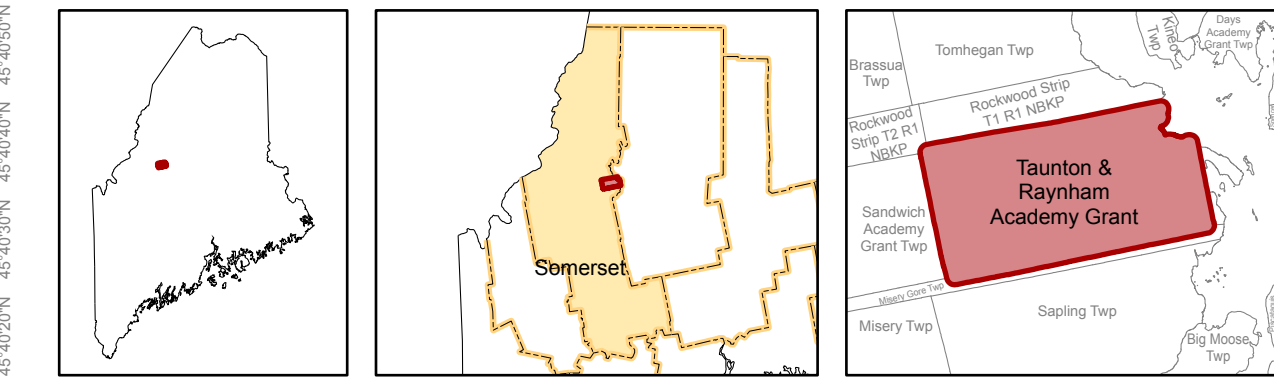


Taunton and Raynham Academy Grant Twp.

T1 R1 NBKP, (South portion) Askwith

Somerset County

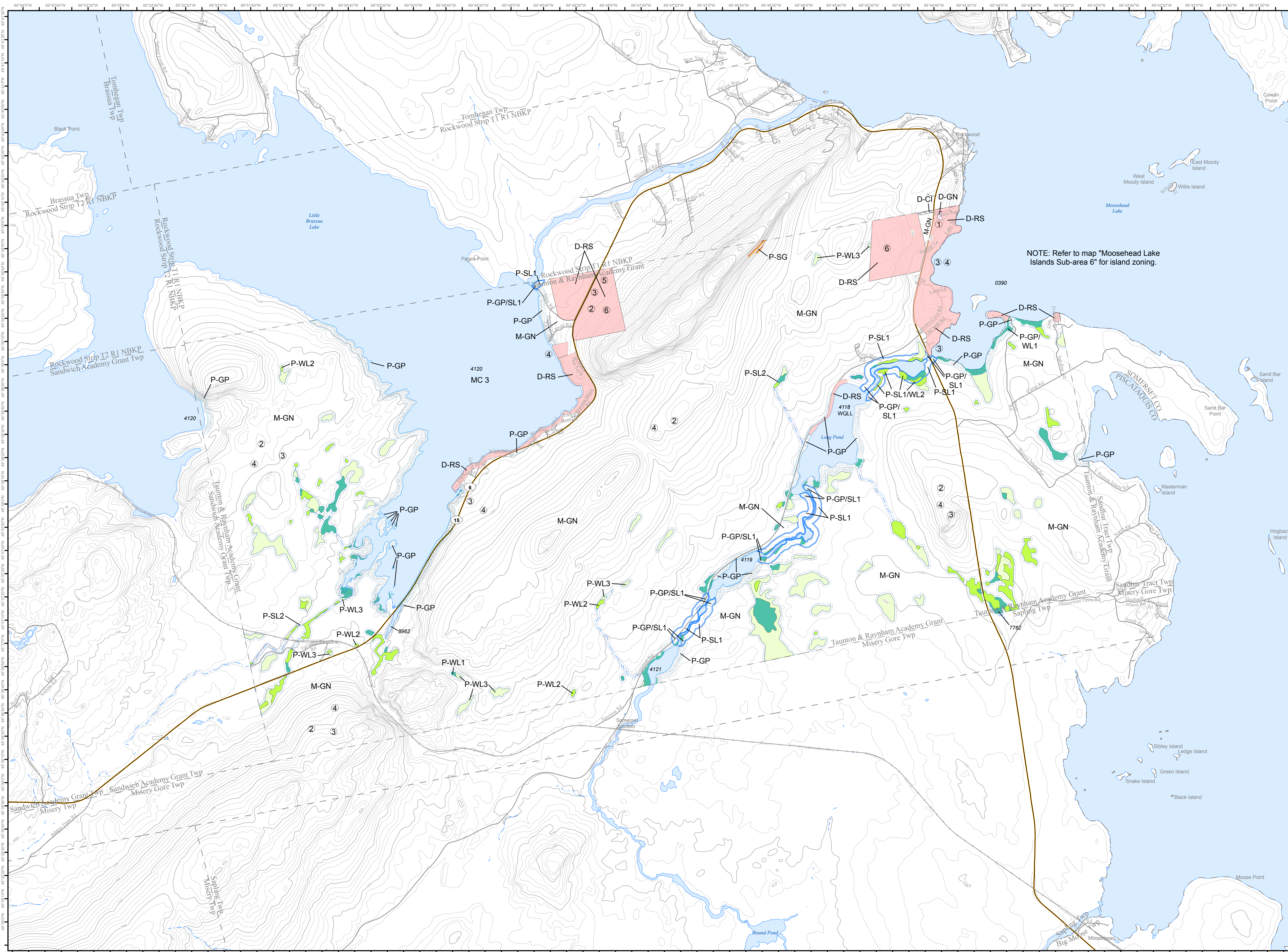


Land Use Guidance Map

Department of Agriculture, Conservation and Forestry
Maine Land Use Planning Commission

- Legend**
- DEVELOPMENT SUBDISTRICTS**
- D-CI: Commercial Industrial
 - D-GN: General
 - D-RS: Residential
- MANAGEMENT SUBDISTRICTS**
- M-GN: General
- PROTECTION SUBDISTRICTS**
- P-GP: Great Pond
 - P-RP: Resource Plan
 - P-SG: Soils and Geology
 - P-SL1: Shoreland - 250'
 - P-SL2: Shoreland - 75'
 - P-UA: Unusual Area
 - P-WL1: Wetlands of Special Significance
 - P-WL2: Scrub-shrub Wetlands
 - P-WL3: Forested Wetlands

NOTE: Refer to map "Moosehead Lake Islands Sub-area 6" for island zoning.



For complete descriptions of those areas included within the various subdistricts, and the associated regulations, refer to the Commission's Chapter 10 rules: Land Use Districts and Standards. Where any inconsistencies exist between the district boundaries, as shown on this map, and those described by the Commission's Land Use Districts and Standards, the latter shall govern.

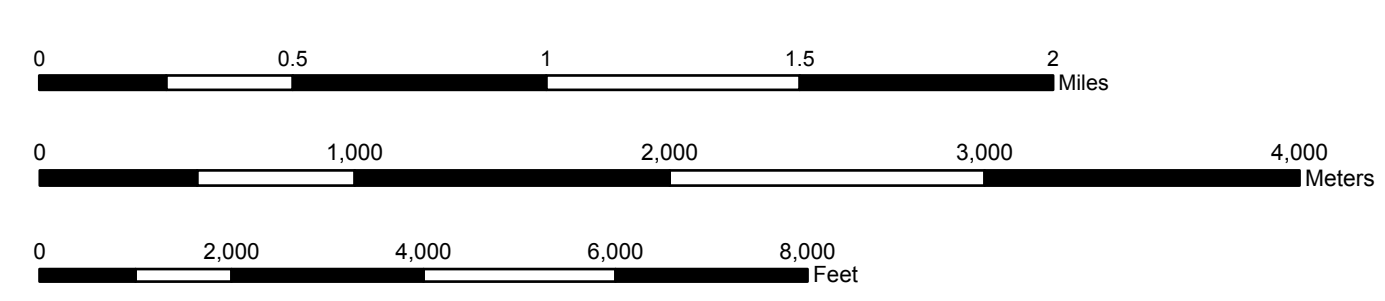
For simplicity, this map does not show all the Wetland Protection Subdistricts for areas identified pursuant to Section 10.23.N,2 such as the beds of rivers, lakes, and other water bodies, and freshwater wetlands within 25 feet of stream channels. Nevertheless, these areas are within P-WL Subdistricts. In addition, this map does not show the Shoreland Protection Subdistricts along stream channels flowing through wetlands. Nevertheless, these areas are within P-SL2 Protection Subdistricts. If the locations of flowing waters or bodies of standing water existing on the ground differ from those shown on the map, then, pursuant to 12 M.R.S., Section 685-A(2)(G), P-GP, P-RR, P-SL, P-WL, and other subdistrict boundaries that are based upon the location of such waters shall, as appropriate, be deemed to follow the flowing water or body of standing water existing on the ground.

This Land Use Guidance Map was adopted by the Maine Land Use Planning Commission on **08/03/2005**, and became effective on **08/18/2005**.

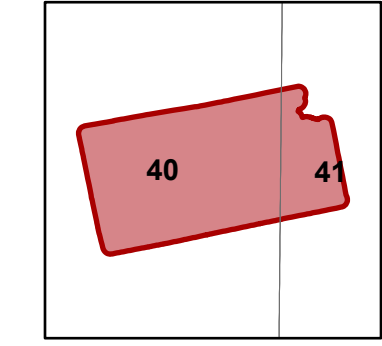
This map is certified to be a true and correct copy of the Official Land Use Guidance Map of the Maine Land Use Planning Commission.

By: Caroline M. Carroll, Director, Maine Land Use Planning Commission.

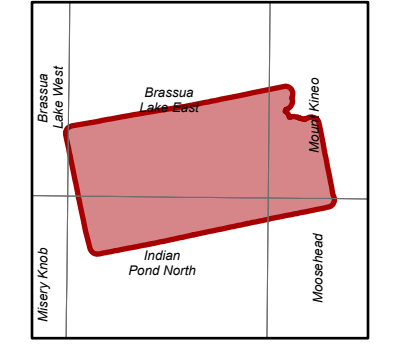
Amendments			
Location #	Zoning Permit	Effective Date	Remarks
1	ZP700	08/18/2005	Adoption of digital NW1 wetlands
2	ZP707	09/22/2005	
3	ZP707A	10/08/2009	P-RP 014 Expires October 8, 2039
4	ZP775	08/19/2010	P-RP 014 Expires October 8, 2039
5	ZP707B	05/23/2019	
6	ZP791	07/30/2020	P-RP 014 Terminated
		12/30/2022	



DeLorme map locus



USGS 7.5' quad index



- ① Map amendment location
- ▲ Point at which a river drains 25 square miles - symbol points upstream (12 M.R.S. Sec. 682-B(4))
- 9999 MIDAS number: Unique number assigned to each standing body of water in Maine.
- WQLL Water Quality Limiting Lake - Refer to Section 10.23.E.3.g of the Commission's Land Use Districts and Standards.
- Lake Management Classes - Refer to Section 10.02 (Definitions) of the Commission's Land Use Districts and Standards.