

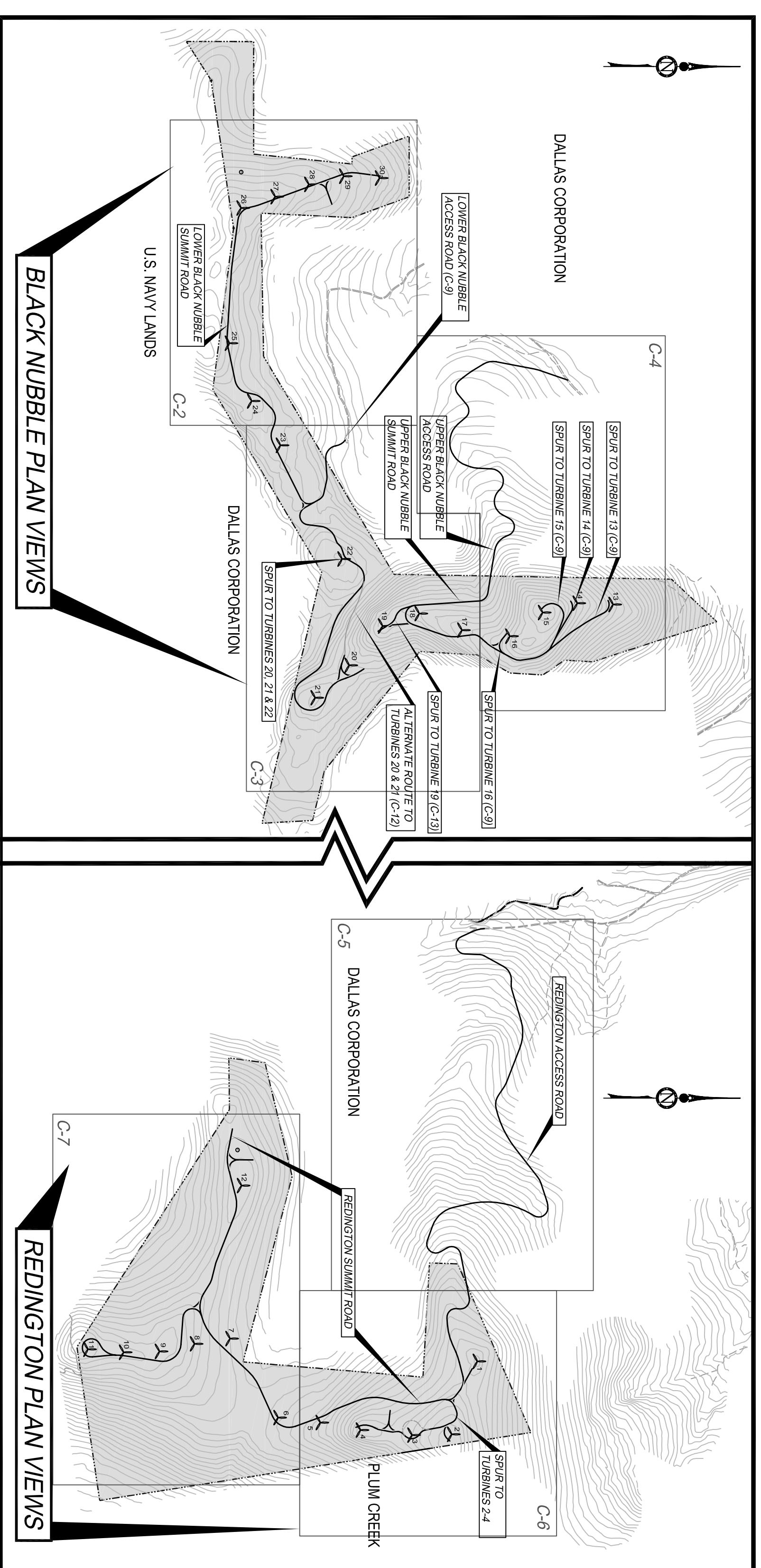
# REDINGTON WIND FARM PROJECT REDINGTON MOUNTAIN WINDPOWER, L.L.C.

## LEGEND

- PARCEL BOUNDARY
- WETLAND AREA
- DRAINAGE DIVIDE
- EXISTING CONTOUR
- EXISTING TREELINE
- EXISTING ACCESS ROAD
- PROPOSED ALIGNMENT
- TRANSMISSION LINE
- PROPOSED TURBINE LOCATION
- PROPOSED REFERENCE TOWER

## INDEX

- C-1 COVER SHEET, INDEX AND LEGEND
- C-2 LOWER BLACK NUBBLE SUMMIT ROAD
- C-3 LOWER BLACK NUBBLE ACCESS ROAD, SPUR TO TURBINES 20, 21, & 22 AND PORTIONS OF SUMMIT ROADS
- C-4 UPPER BLACK NUBBLE ACCESS ROAD AND SUMMIT ROAD
- C-5 REDINGTON ACCESS ROAD
- C-6 REDINGTON SUMMIT ROAD AND SPURS TO TURBINES 1, 2, 3 & 4
- C-7 REDINGTON SUMMIT ROAD AND SPURS TO TURBINES 8, 9, 10 & 11
- C-8 LOWER BLACK NUBBLE SUMMIT ROAD PROFILE
- C-9 LOWER BLACK NUBBLE SUMMIT ROAD, ACCESS ROAD AND SPURS TO TURBINES 13, 14 & 15 PROFILES
- C-10 LOWER BLACK NUBBLE SPUR TO TURBINES 20, 21 & 22 PROFILE
- C-11 UPPER BLACK NUBBLE ACCESS ROAD PROFILE
- C-12 UPPER BLACK NUBBLE ACCESS ROAD AND ALT. ROUTE TO TURBINES 20 & 21 PROFILES
- C-13 UPPER BLACK NUBBLE SUMMIT ROAD AND SPURS TO TURBINES 16 & 19 PROFILES
- C-14 REDINGTON SUMMIT ROAD PROFILE
- C-15 REDINGTON SUMMIT ROAD PROFILE
- C-16 REDINGTON SPUR TO TURBINES 2, 4 AND SPUR TO TURBINES 8 - 11 PROFILES
- C-17 REDINGTON ACCESS ROAD PROFILE
- C-18 REDINGTON ACCESS ROAD PROFILE
- C-19 REDINGTON ACCESS ROAD PROFILE
- C-20 ROADWAY DETAILS
- C-21 BACK SLOPE DETAILS
- C-22 DITCH DETAILS
- C-23 EROSION CONTROL DETAILS
- C-24 FILL SLOPE DETAILS
- W-1 LOWER BLACK NUBBLE DRAINAGE AREAS
- W-2 LOWER BLACK NUBBLE DRAINAGE AREAS
- W-3 UPPER BLACK NUBBLE DRAINAGE AREAS
- W-4 REDINGTON ACCESS ROAD DRAINAGE AREAS
- W-5 REDINGTON SUMMIT ROAD DRAINAGE AREAS
- W-6 REDINGTON SUMMIT ROAD DRAINAGE AREAS
- I-1 EXISTING ROAD IMPROVEMENTS INSET AREAS 4 AND 5
- I-2 ACCESS ROUTE EXTENSIONS AND EXISTING ROAD IMPROVEMENTS INSET AREAS 1, 2, 3, AND 6
- I-3 SUBSTATION INTERCONNECT AND ACCESS ROAD INSET AREA 7
- B-1 REDINGTON PARCEL WATER QUALITY BUFFER AREAS
- B-2 BLACK NUBBLE PARCEL WATER QUALITY BUFFER AREAS



## ORIENTATION MAP

SCALE: 1"=1500 FT.

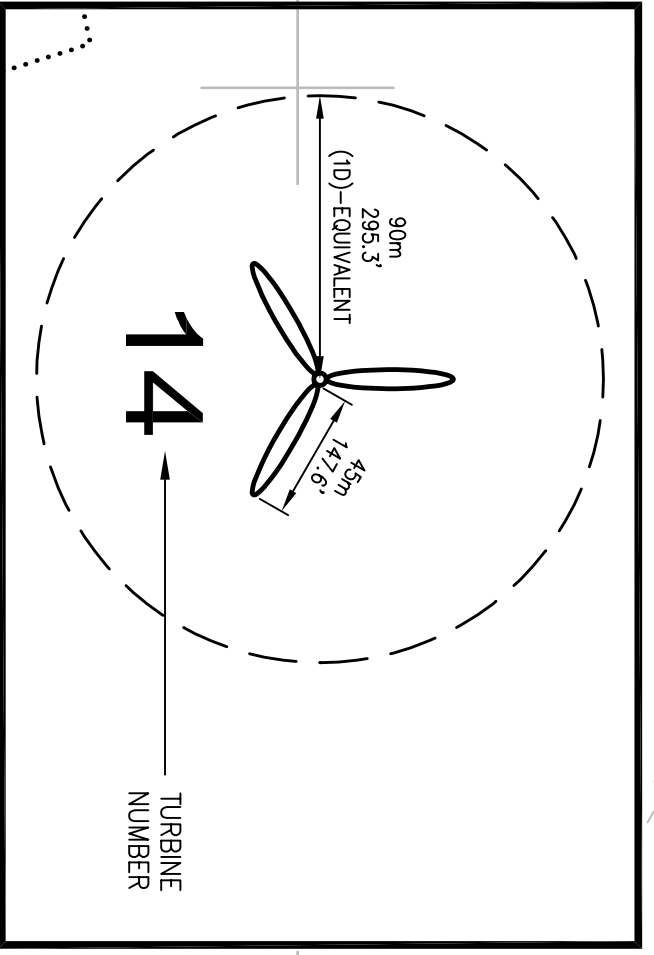
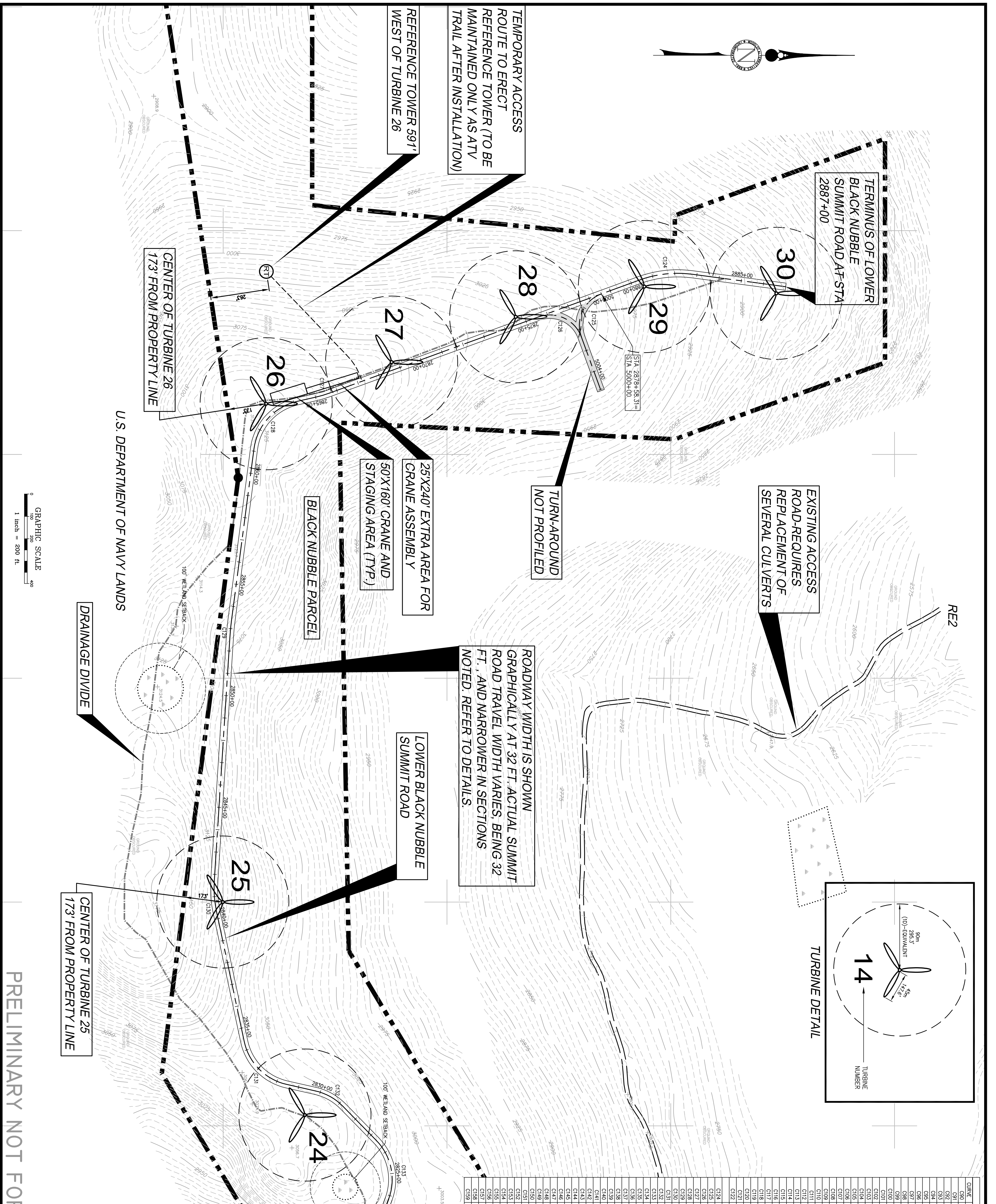
## DATA SOURCE

- TOPOGRAPHIC INFORMATION:**  
 COMPILED FROM MAY 22, 2002  
 AND DECEMBER 2, 2003  
 VERTICAL DATUM NGVD 1929  
 HORIZONTAL DATUM: UTM, ZONE 19, NAD 1983 FEET.  
 AERIAL PHOTOGRAPHS AND TOPOGRAPHY BY AERIAL  
 SURVEY & PHOTO, INC.  
 NORRIDGEWOCK, MAINE
- TOWER LOCATIONS:**  
 90M LAYOUT (2D) ENDLESS ENERGY  
 METEOROLOGIST
- WETLANDS / NATURAL RESOURCES:**  
 WOODLOT ALTERNATIVES, INC.  
 TOPSHAM, MAINE

THE PROJECT DRAWINGS PROVIDE ONLY A PORTION OF THE SITE WORK REQUIREMENTS. CONSTRUCTION SHALL OCCUR ONLY USING PROJECT SPECIFICATIONS PREPARED BY DELUCA-HOFFMAN ASSOCIATES, INC. OR THEIR SUBCONSULTANTS AND DRAWINGS WHICH HAVE A REVISION BLOCK INDICATING "RELEASED FOR CONSTRUCTION". AT A MINIMUM, ALL WORK SHOULD COMPLY WITH THE MAINE STATE DEPARTMENT OF TRANSPORTATION SPECIFICATIONS. ALL MATERIALS PLACED AS PART OF THIS PROJECT SHALL BE COMPACTED TO THE PERCENT AS REQUIRED BY THE PROJECT'S GEOTECHNICAL ENGINEER.

PRELIMINARY NOT FOR CONSTRUCTION

REDINGTON WIND FARM PROJECT REDINGTON MOUNTAIN WINDPOWER, LLC		COVER SHEET, INDEX AND LEGEND				
SHEET <b>C-1</b>	DeLuca-Hoffman Associates, Inc. 778 MAIN STREET, SUITE 8 SOUTH PORTLAND, ME 04106 207.775.1121 WWW.DELUCAHOFFMAN.COM	DRAWN: KEW	DATE: 07.29.05	2	12.15.05	REVISED PROJECT TITLE
		DESIGNED: DDA	SCALE: AS NOTED	1	08.12.05	ISSUED TO CLIENT FOR REVIEW
		CHECKED: WGH	JOB NO. 1708.06	NO.	DATE	REVISIONS
		FILE NAME: 1708.02-ALIGN				



CURVE	RADIUS	LENGTH	TANGENT	DELTA	PC STATION	PT STATION
C90	5000.00	74.05	371.0	82.910°	2005+03.46	2005+77.51
C91	3000.00	220.25	1135.35	42.0350°	2012+20.69	2014+40.93
C92	1500.00	440.50	2270.70	18.0175°	2024+01.38	2028+02.76
C93	1500.00	227.25	1135.35	81.0350°	2024+01.38	2026+02.76
C94	4000.00	626.50	3132.50	14.0175°	2027+96.27	2031+97.65
C95	4000.00	112.06	56.03	16.0302°	2037+07.73	2038+19.79
C96	2000.00	462.85	455.59	132.552°	2040+65.08	2044+27.94
C97	2500.00	468.27	339.83	107.810°	2045+45.62	2050+13.89
C98	1500.00	336.57	317.40	128.532°	2051+50.17	2056+48.74
C99	1500.00	336.57	317.40	51.4678°	2051+50.17	2056+48.74
C100	1500.00	201.71	118.98	58.565°	2102+88.41	2104+89.86
C101	1600.00	438.23	783.91	156.954°	2154+57.43	2191.95.6
C102	6000.00	277.06	141.05	262.728°	2125+24.25	2126+45.68
C103	1500.00	127.57	67.53	48.1434°	2130+23.87	2131+51.44
C104	10000.00	222.67	111.80	124.578°	2132+68.18	2134+93.85
C105	1500.00	233.86	148.05	89.1505°	2133+11.70	2134+36.23
C106	1500.00	233.86	148.05	90.8495°	2133+11.70	2134+36.23
C107	3000.00	56.66	29.71	222.242°	2139+00.02	2139+52.71
C108	1500.00	286.69	137.25	307.431°	2150+48.66	2151+85.15
C109	5000.00	268.69	137.25	307.431°	2152+44.77	2153+81.85
C110	1500.00	61.97	31.43	237.070°	2155+48.06	2156+10.03
C111	1500.00	54.68	27.37	61.575°	2159+11.94	2159+66.92
C112	1950.00	98.619	170.455	108.5646°	2167+20.68	2168+68.97
C113	N/A	N/A	N/A	N/A	N/A	N/A
C114	N/A	N/A	N/A	N/A	N/A	N/A
C115	1500.00	181.14	122.47	78.2746°	2408+58.65	2409+05.79
C116	5000.00	47.14	23.59	52.407°	2408+58.65	2409+05.79
C117	10000.00	109.67	54.89	67.707°	2404+66.01	2405+75.67
C118	1500.00	235.62	150.00	90.0000°	2404+66.01	2405+75.67
C119	2000.00	65.25	42.4	23.5838°	2405+75.67	2406+23.52
C120	2000.00	65.25	42.4	156.4162°	2405+75.67	2406+23.52
C121	2000.00	136.01	71.58	38.9211°	2202+28.86	2203+47.87
C122	2000.00	187.02	100.98	53.9442°	2204+00.06	2205+47.08
C124	5000.00	241.08	122.53	27.2732°	2880+38.54	2882+79.62
C125	1500.00	235.62	150.00	90.0000°	2880+38.54	2882+79.62
C126	1500.00	235.62	150.00	90.0000°	2880+38.54	2882+79.62
C127	5000.00	63.52	31.86	68.4405°	2881+11.10	2884+53.27
C128	2500.00	304.28	174.19	68.4405°	2881+11.10	2884+53.27
C129	12000.00	79.65	39.84	3.4811°	2882+61.84	2883+44.28
C130	5000.00	136.78	68.82	15.4072°	2884+33.98	2884+70.77
C131	2500.00	284.72	160.04	65.1509°	2831+54.75	2834+39.47
C132	2500.00	284.72	160.04	32.8478°	2828+79.37	2831+22.86
C133	2500.00	284.72	160.04	32.8478°	2828+79.37	2831+22.86
C134	1500.00	244.49	159.14	93.2719°	2807+48.74	2809+27.23
C135	1500.00	244.49	159.14	86.7281°	2807+48.74	2809+27.23
C136	1500.00	126.00	66.99	48.0774°	2805+44.07	2806+70.07
C137	1500.00	41.49	20.88	15.5057°	2802+72.51	2803+14.14
C138	2000.00	293.70	160.52	84.0816°	2751+85.86	2754+79.56
C139	2500.00	165.86	79.26	42.3545°	2751+85.86	2754+79.56
C140	2500.00	165.86	79.26	42.3545°	2751+85.86	2754+79.56
C141	3000.00	340.10	180.55	65.5300°	2907+52.87	2910+52.97
C142	N/A	N/A	N/A	N/A	N/A	N/A
C143	N/A	N/A	N/A	N/A	N/A	N/A
C144	1500.00	84.97	43.66	32.2725°	2911+30.62	2912+15.59
C145	1500.00	84.97	43.66	32.2725°	2912+15.59	2913+03.57
C146	1500.00	106.27	55.36	40.531°	2913+03.57	2914+17.84
C147	2500.00	426.24	247.44	14.9497°	2914+17.84	2917+10.14
C148	10000.00	436.46	221.76	28.0002°	2924+43.21	2928+18.87
C149	2500.00	164.88	86.56	37.4714°	2928+18.87	2931+18.70
C150	2600.00	1070.13	666.84	222.9606°	2939+17.28	2954+07.42
C151	4000.00	410.01	225.06	58.4346°	2954+07.42	2959+17.42
C152	12000.00	284.88	143.11	13.5607°	2954+07.42	2957+12.52
C153	1500.00	126.91	67.25	48.2938°	2154+31.44	2157+58.58
C154	1500.00	126.91	67.25	131.7062°	2154+31.44	2157+58.58
C155	1500.00	353.73	183.16	135.0954°	2154+11.77	2158+40.03
C156	12000.00	274.88	138.04	13.0728°	2144+60.03	2148+40.03
C157	12000.00	610.82	312.18	29.0952°	2145+44.31	2149+55.13
C158	12000.00	274.88	138.04	13.0728°	2144+60.03	2148+40.03
C159	12000.00	182.45	91.40	18.4242°	2016+58.17	2018+40.82

PRELIMINARY NOT FOR CONSTRUCTION

**REDINGTON WIND FARM PROJECT**  
**REDINGTON MOUNTAIN WINDPOWER, LLC**

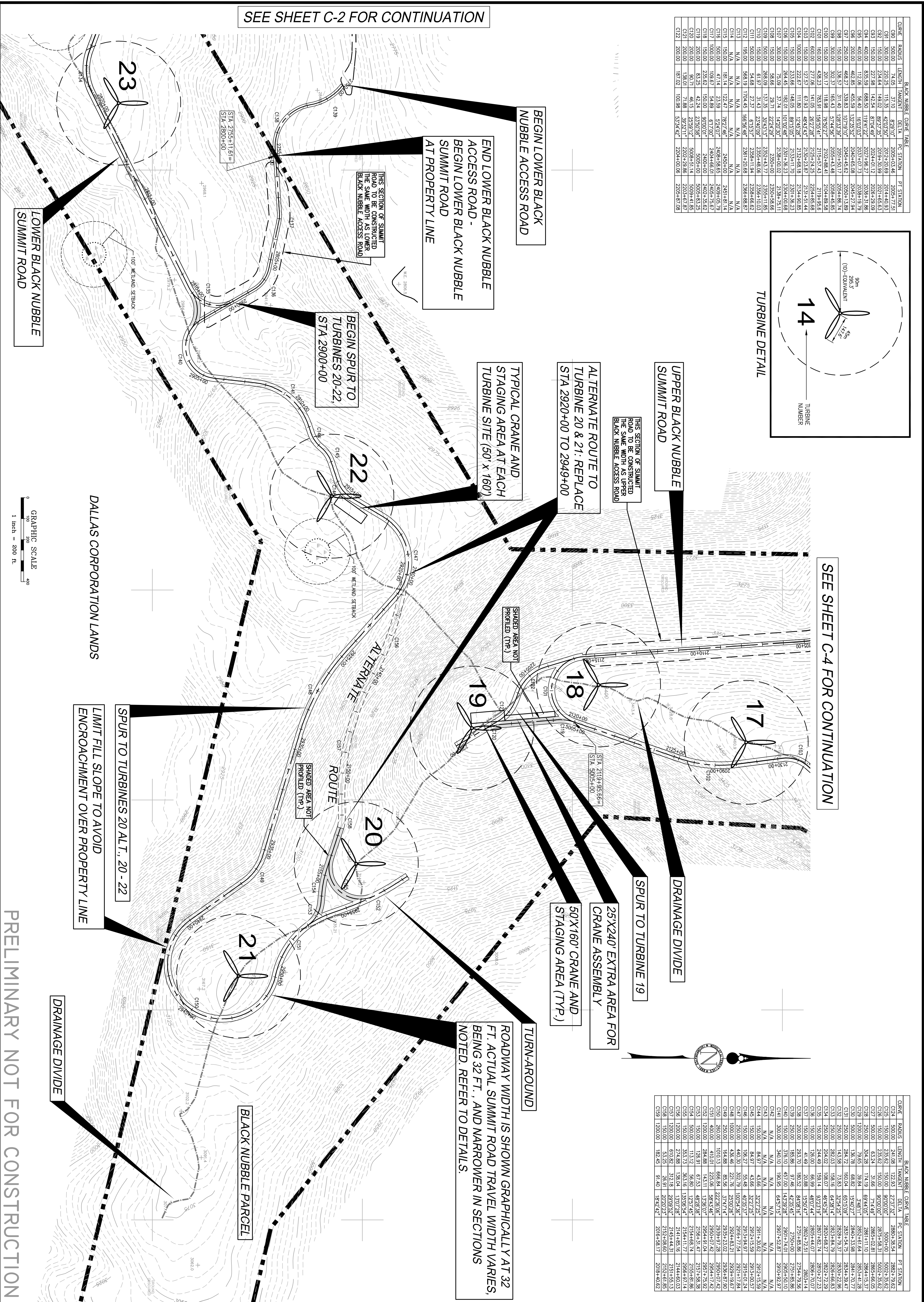
**DH**  
 DeLuca-Hoffman Associates, Inc.  
 778 MAIN STREET, SUITE 8  
 SOUTH PORTLAND, ME 04106  
 207.775.1121  
 WWW.DELUCAHOFFMAN.COM

LOWER BLACK NUBBLE SUMMIT ROAD			
DRAWN:	KEW	DATE:	07.29.05
DESIGNED:	DDA	SCALE:	AS NOTED
CHECKED:	WGH	JOB NO.	1708.06
FILE NAME:	1708.02-ALIGN		

NO.	DATE	REVISIONS
3	12.15.05	REVISED SUMMIT ROAD WIDTH
2	08.12.05	REVISED PER CLIENT COMMENTS
1	07.29.05	ISSUED TO CLIENT FOR REVIEW

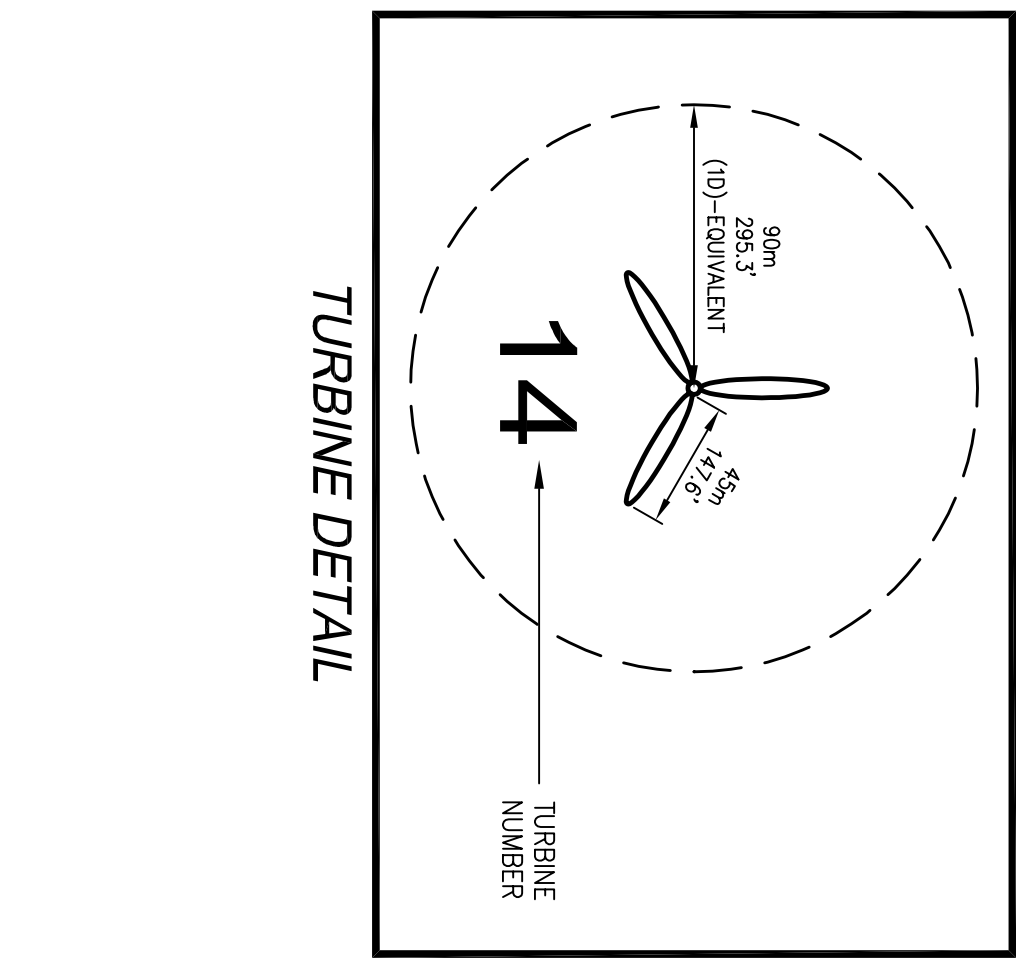
C-2

SHEET



SEE SHEET C-2 FOR CONTINUATION

CURVE	RADIUS	LENGTH	TANGENT	DELTA	P.C. STATION	P.T. STATION
C90	500.00	74.05	37.03	87°31'07"	2005+63.46	2005+77.51
C91	300.00	214.23	115.35	42°53'51"	2015+40.89	2014+48.59
C92	300.00	214.23	115.35	42°53'51"	2015+40.89	2014+48.59
C93	150.00	107.12	57.67	21°26'55"	2014+48.59	2014+48.59
C94	400.00	83.59	41.79	106°21'22"	2014+48.59	2015+40.89
C95	500.00	74.05	37.03	87°31'07"	2015+40.89	2015+40.89
C96	200.00	314.16	157.08	21°26'55"	2015+40.89	2014+48.59
C97	250.00	463.49	231.74	15°41'25"	2014+48.59	2014+48.59
C98	150.00	107.12	57.67	21°26'55"	2014+48.59	2014+48.59
C99	150.00	107.12	57.67	21°26'55"	2014+48.59	2014+48.59
C100	150.00	107.12	57.67	21°26'55"	2014+48.59	2014+48.59
C101	150.00	107.12	57.67	21°26'55"	2014+48.59	2014+48.59
C102	150.00	107.12	57.67	21°26'55"	2014+48.59	2014+48.59
C103	150.00	107.12	57.67	21°26'55"	2014+48.59	2014+48.59
C104	150.00	107.12	57.67	21°26'55"	2014+48.59	2014+48.59
C105	150.00	107.12	57.67	21°26'55"	2014+48.59	2014+48.59
C106	150.00	107.12	57.67	21°26'55"	2014+48.59	2014+48.59
C107	150.00	107.12	57.67	21°26'55"	2014+48.59	2014+48.59
C108	150.00	107.12	57.67	21°26'55"	2014+48.59	2014+48.59
C109	150.00	107.12	57.67	21°26'55"	2014+48.59	2014+48.59
C110	150.00	107.12	57.67	21°26'55"	2014+48.59	2014+48.59
C111	150.00	107.12	57.67	21°26'55"	2014+48.59	2014+48.59
C112	150.00	107.12	57.67	21°26'55"	2014+48.59	2014+48.59
C113	150.00	107.12	57.67	21°26'55"	2014+48.59	2014+48.59
C114	150.00	107.12	57.67	21°26'55"	2014+48.59	2014+48.59
C115	150.00	107.12	57.67	21°26'55"	2014+48.59	2014+48.59
C116	150.00	107.12	57.67	21°26'55"	2014+48.59	2014+48.59
C117	150.00	107.12	57.67	21°26'55"	2014+48.59	2014+48.59
C118	150.00	107.12	57.67	21°26'55"	2014+48.59	2014+48.59
C119	150.00	107.12	57.67	21°26'55"	2014+48.59	2014+48.59
C120	150.00	107.12	57.67	21°26'55"	2014+48.59	2014+48.59
C121	200.00	130.01	65.00	49°32'11"	2205+28.86	2205+67.87
C122	200.00	130.01	65.00	49°32'11"	2205+28.86	2205+67.87



UPPER BLACK NUBBLE SUMMIT ROAD

THIS SECTION OF SUMMIT ROAD TO BE CONSTRUCTED THE SAME WITH AN UPPER BLACK NUBBLE ACCESS ROAD

ALTERNATE ROUTE TO TURBINES 20 & 21: REPLACE STA 2920+00 TO 2949+00

TYPICAL CRANE AND STAGING AREA AT EACH TURBINE SITE (50' x 160')

BEGIN LOWER BLACK NUBBLE ACCESS ROAD

BEGIN SPUR TO TURBINES 20-22, STA 2900+00

END LOWER BLACK NUBBLE ACCESS ROAD - BEGIN LOWER BLACK NUBBLE SUMMIT ROAD AT PROPERTY LINE

THIS SECTION OF SUMMIT ROAD TO BE CONSTRUCTED THE SAME WITH AN UPPER BLACK NUBBLE ACCESS ROAD

SEE SHEET C-4 FOR CONTINUATION

SPUR TO TURBINE 19

DRAINAGE DIVIDE

25'X240' EXTRA AREA FOR CRANE ASSEMBLY

50'X160' CRANE AND STAGING AREA (TYP.)

TURN-AROUND

ROADWAY WIDTH IS SHOWN GRAPHICALLY AT 32 FT. ACTUAL SUMMIT ROAD TRAVEL WIDTH VARIES, BEING 32 FT., AND NARROWER IN SECTIONS NOTED. REFER TO DETAILS.

SHADED AREA NOT PROFILED (TYP.)

SHADED AREA NOT PROFILED (TYP.)

SHADED AREA NOT PROFILED (TYP.)

SHADED AREA NOT PROFILED (TYP.)

SHADED AREA NOT PROFILED (TYP.)

SHADED AREA NOT PROFILED (TYP.)

SHADED AREA NOT PROFILED (TYP.)

SHADED AREA NOT PROFILED (TYP.)

SHADED AREA NOT PROFILED (TYP.)

SHADED AREA NOT PROFILED (TYP.)

SHADED AREA NOT PROFILED (TYP.)

SHADED AREA NOT PROFILED (TYP.)

SHADED AREA NOT PROFILED (TYP.)

SHADED AREA NOT PROFILED (TYP.)

SPUR TO TURBINES 20 ALT. 20 - 22

LIMIT FILL SLOPE TO AVOID ENCROACHMENT OVER PROPERTY LINE

DRAINAGE DIVIDE

BLACK NUBBLE PARCEL

DALLAS CORPORATION LANDS

LOWER BLACK NUBBLE SUMMIT ROAD

GRAPHIC SCALE  
1 inch = 200 ft.

PRELIMINARY NOT FOR CONSTRUCTION

REDINGTON WIND FARM PROJECT  
REDINGTON MOUNTAIN WINDPOWER, LLC



DeLuca-Hoffman Associates, Inc.  
778 MAIN STREET, SUITE 8  
SOUTH PORTLAND, ME 04106  
207.775.1121  
WWW.DELUCAHOFFMAN.COM

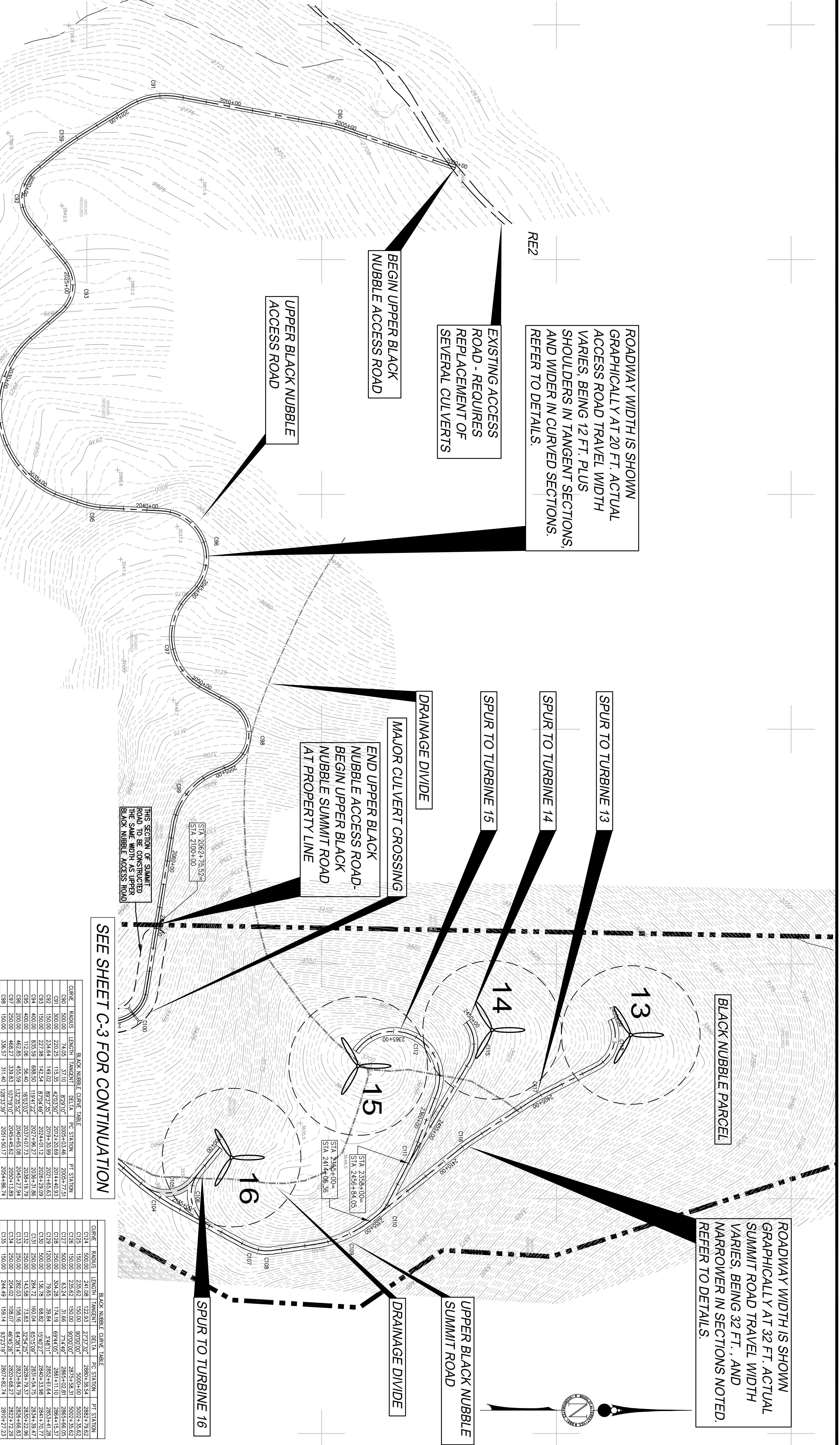
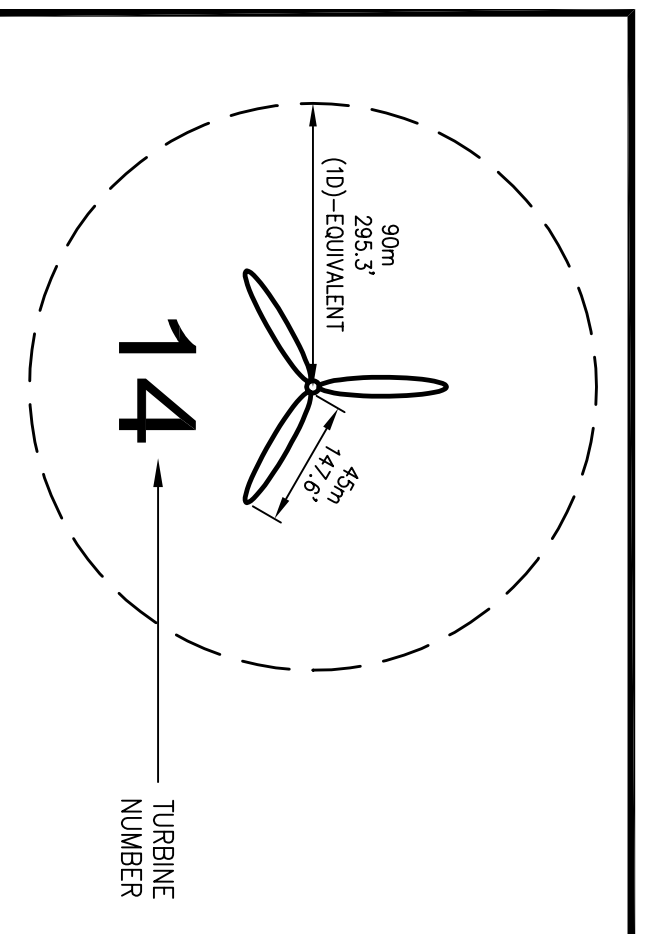
LOWER BLACK NUBBLE  
ACCESS ROAD, SPUR TO TURBINES 20, 21  
& 22 AND PORTIONS OF SUMMIT ROADS

DRAWN:	KEW	DATE:	07.29.05
DESIGNED:	DDA	SCALE:	AS NOTED
CHECKED:	WGH	JOB NO.	1708.06
FILE NAME:	1708.02-ALIGN		

NO.	DATE	REVISIONS
3	12.15.05	REVISED SUMMIT ROAD WIDTH
2	08.12.05	REVISED PER CLIENT COMMENTS
1	07.29.05	ISSUED TO CLIENT FOR REVIEW

PRELIMINARY NOT FOR CONSTRUCTION

GRAPHIC SCALE  
1 inch = 200 ft.



ROADWAY WIDTH IS SHOWN GRAPHICALLY AT 20 FT. ACTUAL ACCESS ROAD TRAVEL WIDTH VARIES, BEING 12 FT. PLUS SHOULDERS IN TANGENT SECTIONS, AND WIDER IN CURVED SECTIONS. REFER TO DETAILS.

EXISTING ACCESS ROAD - REQUIRES REPLACEMENT OF SEVERAL CULVERTS

BEGIN UPPER BLACK NUBBLE ACCESS ROAD

UPPER BLACK NUBBLE ACCESS ROAD

MAJOR CULVERT CROSSING

END UPPER BLACK NUBBLE ACCESS ROAD. BEGIN UPPER BLACK NUBBLE SUMMIT ROAD AT PROPERTY LINE

BLACK NUBBLE PARCEL

ROADWAY WIDTH IS SHOWN GRAPHICALLY AT 32 FT. ACTUAL SUMMIT ROAD TRAVEL WIDTH VARIES, BEING 32 FT., AND NARROWER IN SECTIONS NOTED. REFER TO DETAILS.

UPPER BLACK NUBBLE SUMMIT ROAD

DRAINAGE DIVIDE

SPUR TO TURBINE 16

SEE SHEET C-3 FOR CONTINUATION

CHIR#	RAIUS	LENGTH	TANGENT	DELTA	PC STATION	PT STATION
C90	500.00	74.05	371.0	82.9107	2005+43.46	2005+77.51
C91	300.00	22.02	115.25	42.03597	2012+20.59	2012+44.53
C92	500.00	112.82	564.1	82.7252	2012+44.53	2012+157.35
C93	150.00	227.98	147.52	82.7252	2012+157.35	2012+430.32
C94	400.00	635.59	668.50	118.41727	2027+46.27	2028+131.86
C95	400.00	112.06	56.40	163.0357	2037+40.73	2038+19.79
C96	200.00	462.85	455.59	127.5552	2040+65.08	2045+27.94
C97	250.00	468.27	335.83	107.9107	2045+45.52	2050+11.89
C98	150.00	336.57	311.40	128.33397	2051+50.17	2054+78.74
C99	150.00	201.17	115.88	32.95735	2072+88.41	2073+94.15
C100	150.00	201.17	115.88	32.95735	2072+88.41	2073+94.15
C101	160.00	438.23	783.91	156.5541	2115+57.43	2119+45.65
C102	600.00	277.06	141.05	262.7738	2125+42.45	2125+48.66
C103	150.00	127.57	61.93	48.43437	2132+43.87	2131.51.44
C104	1000.00	222.87	111.80	124.5728	2132+43.87	2134+90.85
C105	150.00	232.06	148.03	89.15195	2134+90.85	2135+26.23
C106	150.00	232.06	148.03	89.15195	2134+90.85	2135+26.23
C107	300.00	75.09	37.24	14.20039	2138+40.02	2138+75.11
C108	150.00	58.66	29.71	22.24297	2150+10.00	2150+58.66
C109	500.00	268.09	131.35	30.43157	2152+43.77	2155+11.85
C110	150.00	61.97	31.43	23.24079	2155+48.06	2156+10.03
C111	500.00	54.68	27.37	61.57537	2158+11.94	2158+66.62
C112	150.00	56.81	28.40	105.9846	2161+20.08	2161+76.87
C113	150.00	56.81	28.40	105.9846	2161+20.08	2161+76.87
C114	N/A	N/A	N/A	N/A	N/A	N/A
C115	150.00	181.14	122.47	78.2746	2165+10.00	2165+81.14
C116	500.00	47.14	23.59	52.4707	2168+46.00	2168+93.79
C117	1000.00	109.67	54.89	61.77007	2168+46.00	2169+83.79
C118	150.00	235.62	193.00	90.00017	2169+83.79	2170+58.62
C119	500.00	52.15	44.15	23.50358	2170+58.62	2171+11.85
C120	200.00	136.01	71.88	39.12211	2202+29.86	2203+46.87
C121	200.00	136.01	71.88	39.12211	2202+29.86	2203+46.87
C122	200.00	187.02	100.98	53.34427	2204+00.00	2205+49.70

CHIR#	RAIUS	LENGTH	TANGENT	DELTA	PC STATION	PT STATION
C124	150.00	241.08	122.93	27.57327	2280+38.54	2282+79.62
C125	150.00	235.62	150.00	90.00000	5000+0.00	5002+35.62
C126	150.00	235.62	150.00	90.00000	2875+58.31	2882+35.62
C127	150.00	63.24	31.66	71.4497	2885+02.81	2885+66.05
C128	250.00	304.28	174.19	69.44105	2885+11.00	2888+15.37
C129	150.00	84.97	41.66	32.27257	2911+30.62	2911+15.92
C130	150.00	84.97	41.66	32.27257	2911+30.62	2911+15.92
C131	250.00	284.72	160.24	65.15107	2924+14.45	2924+70.72
C132	250.00	136.29	67.82	15.26177	2924+14.45	2924+70.72
C133	250.00	71.83	37.24	26.81737	2924+70.72	2925+22.56
C134	250.00	204.02	108.07	46.54576	2925+22.56	2926+66.83
C135	150.00	244.49	158.14	53.23197	2926+66.83	2927+17.23
C136	150.00	244.49	158.14	53.23197	2926+66.83	2927+17.23
C137	150.00	41.49	20.88	15.50747	2927+17.23	2927+58.14
C138	200.00	283.00	181.52	64.0816	2927+58.14	2928+03.14
C139	250.00	185.86	91.46	42.55457	2928+03.14	2928+49.56
C140	150.00	316.10	157.00	14.53978	2928+49.56	2929+50.10
C141	300.00	340.10	198.95	64.57157	2929+52.87	2930+49.97
C142	N/A	N/A	N/A	N/A	N/A	N/A
C143	N/A	N/A	N/A	N/A	N/A	N/A
C144	150.00	84.97	41.66	32.27257	2931+30.62	2931+15.92
C145	150.00	84.97	41.66	32.27257	2931+30.62	2931+15.92
C146	150.00	108.27	55.48	40.25437	2931+48.97	2931+01.24
C147	250.00	440.30	302.79	100.04367	2931+48.97	2931+17.84
C148	1000.00	438.46	221.78	25.00706	2934+83.21	2934+18.67
C149	250.00	104.65	52.32	37.47142	2934+83.21	2934+81.92
C150	150.00	104.65	52.32	37.47142	2934+83.21	2934+81.92
C151	400.00	410.01	223.06	58.83346	2950+07.42	2954+17.42
C152	1200.00	610.89	312.8	13.20728	2114+55.13	2114+55.13
C153	1200.00	274.88	138.64	13.20728	2114+55.13	2114+55.13
C154	1200.00	182.45	91.40	18.74247	2016+58.17	2018+40.62

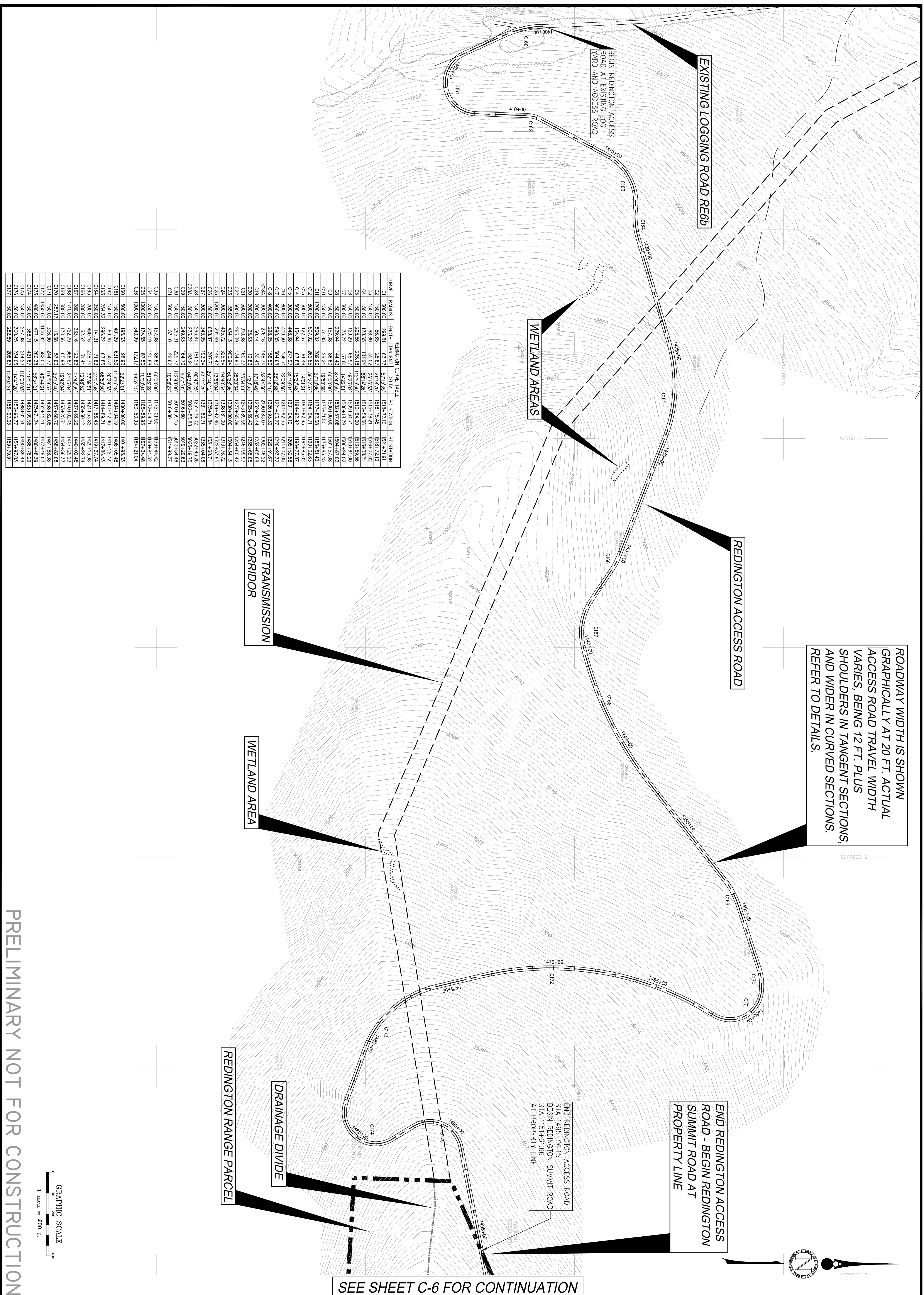
REDINGTON WIND FARM PROJECT  
REDINGTON MOUNTAIN WINDPOWER, LLC

DeLuca-Hoffman Associates, Inc.  
778 MAIN STREET, SUITE 8  
SOUTH PORTLAND, ME 04106  
207.775.1121  
WWW.DELUCAHOFFMAN.COM

SHEET C-4

UPPER BLACK NUBBLE ACCESS ROAD AND SUMMIT ROAD			
DRAWN:	KEW	DATE:	07.29.05
DESIGNED:	DDA	SCALE:	AS NOTED
CHECKED:	WGH	JOB NO.	1708.06
FILE NAME:	1708.02-ALIGN		

NO.	DATE	REVISIONS
3	12.15.05	REVISED SUMMIT ROAD WIDTH
2	08.12.05	REVISED PER CLIENT COMMENTS
1	07.29.05	ISSUED TO CLIENT FOR REVIEW



ROADWAY WIDTH IS SHOWN GRAPHICALLY AT 20 FT. ACTUAL ACCESS ROAD TRAVEL WIDTH VARIES, BEING 12 FT. PLUS SHOULDERS IN TANGENT SECTIONS, AND WIDER IN CURVED SECTIONS. REFER TO DETAILS.

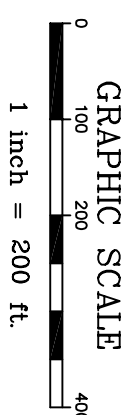
END REDINGTON ACCESS ROAD - BEGIN REDINGTON SUMMIT ROAD AT PROPERTY LINE

END REDINGTON ACCESS ROAD STA 1495+96.15  
BEGIN REDINGTON SUMMIT ROAD STA 151+61.66  
AT PROPERTY LINE

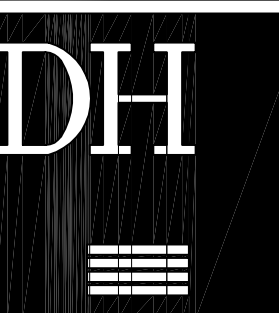
SEE SHEET C-6 FOR CONTINUATION

CURVE	RADIUS	LENGTH	TANGENT	DELTA	PC STATION	PT STATION
C1	150.00	54.61	28.67	21.83	1518+15.46	1516+27.10
C2	150.00	68.80	36.02	26.16	1515+38.27	1516+07.02
C3	150.00	178.65	101.64	68+14.96	1513+59.56	1515+38.27
C4	150.00	295.96	228.18	117.53	1510+64.00	1513+59.56
C5	150.00	75.22	37.81	14.72	1509+14.73	1510+64.00
C6	150.00	29.92	14.44	5.44	1508+34.02	1509+14.73
C7	150.00	157.08	86.61	60.00	1505+00.00	1507+57.08
C8	150.00	51.95	26.24	18.50	1495+15.50	1497+53.45
C9	1200.00	568.02	288.96	271.00	1477+82.38	1490+02.63
C10	800.00	122.37	61.48	14.01	1484+82.63	1485+82.02
C11	500.00	134.94	67.88	15.72	1484+82.63	1485+82.02
C12	500.00	128.51	64.44	15.14	1484+82.63	1485+82.02
C13	500.00	128.51	64.44	15.14	1484+82.63	1485+82.02
C14	500.00	128.51	64.44	15.14	1484+82.63	1485+82.02
C15	500.00	128.51	64.44	15.14	1484+82.63	1485+82.02
C16	800.00	308.50	156.71	37.00	1470+82.50	1474+02.05
C17	800.00	308.50	156.71	37.00	1470+82.50	1474+02.05
C18	400.00	298.55	156.50	36.72	1470+82.50	1474+02.05
C19	200.00	60.44	30.45	17.84	1469+05.44	1470+82.50
C20	200.00	28.51	14.26	5.70	1468+05.88	1469+05.44
C21	500.00	134.94	67.88	15.72	1468+05.88	1469+05.44
C22	600.00	265.39	134.50	25.00	1467+45.39	1468+05.44
C23	150.00	434.13	900.94	160.28	1467+45.39	1468+05.44
C24	300.00	495.72	325.54	94.00	1467+45.39	1468+05.44
C25	1200.00	291.49	146.47	13.95	1467+45.39	1468+05.44
C26	150.00	598.87	207.71	25.10	1467+45.39	1468+05.44
C27	150.00	28.51	14.26	5.70	1467+45.39	1468+05.44
C28	150.00	273.72	131.91	10.43	1467+45.39	1468+05.44
C29	150.00	248.63	164.70	95.21	1467+45.39	1468+05.44
C30	150.00	295.31	225.77	117.48	1467+45.39	1468+05.44
C31	300.00	53.10	26.62	10.08	1467+45.39	1468+05.44
C32	150.00	147.08	74.50	37.00	1467+45.39	1468+05.44
C33	150.00	223.19	107.88	51.98	1467+45.39	1468+05.44
C34	1000.00	174.55	87.50	10.00	1467+45.39	1468+05.44
C35	1000.00	340.99	172.17	19.27	1467+45.39	1468+05.44
C36	1000.00	340.99	172.17	19.27	1467+45.39	1468+05.44
C160	500.00	195.33	98.93	22.30	1460+00.00	1461+95.33
C161	150.00	40.29	63.59	15.76	1460+00.00	1461+95.33
C162	150.00	254.37	128.51	25.00	1460+00.00	1461+95.33
C163	254.37	296.72	167.83	28.52	1460+00.00	1461+95.33
C164	350.00	141.31	71.63	23.07	1460+00.00	1461+95.33
C165	700.00	460.16	238.74	37.99	1460+00.00	1461+95.33
C166	280.00	62.62	31.44	7.48	1460+00.00	1461+95.33
C167	280.00	233.16	123.82	47.42	1460+00.00	1461+95.33
C168	170.00	72.29	36.87	23.10	1460+00.00	1461+95.33
C169	170.00	113.38	57.63	25.54	1460+00.00	1461+95.33
C170	257.17	113.38	57.63	25.54	1460+00.00	1461+95.33
C171	150.00	306.30	244.77	116.59	1460+00.00	1461+95.33
C172	1450.00	1106.92	582.00	43.42	1460+00.00	1461+95.33
C173	480.00	477.15	260.38	56.27	1460+00.00	1461+95.33
C174	150.00	388.71	221.67	14.05	1460+00.00	1461+95.33
C175	150.00	292.96	214.23	11.00	1460+00.00	1461+95.33
C176	150.00	50.72	25.36	6.44	1460+00.00	1461+95.33
C177	150.00	282.89	206.67	10.03	1460+00.00	1461+95.33

PRELIMINARY NOT FOR CONSTRUCTION



REDINGTON WIND FARM PROJECT  
REDINGTON MOUNTAIN WINDPOWER, LLC

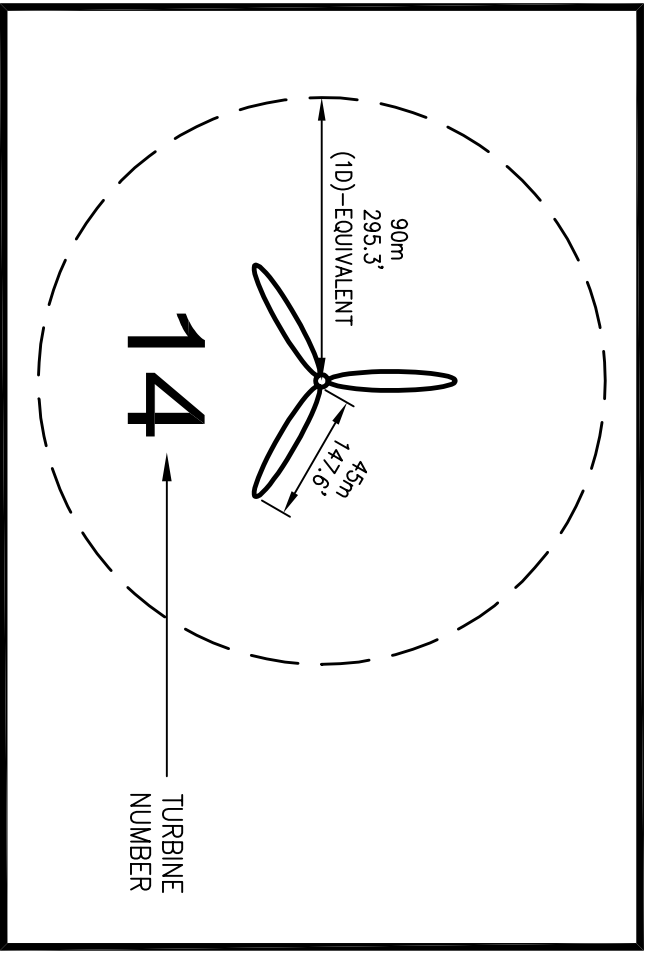


DeLuca-Hoffman Associates, Inc.  
778 MAIN STREET, SUITE 8  
SOUTH PORTLAND, ME 04106  
207.775.1121  
WWW.DELUCAHOFFMAN.COM

REDINGTON ACCESS ROAD

DRAWN:	KEW	DATE:	07.29.05
DESIGNED:	DDA	SCALE:	AS NOTED
CHECKED:	WGH	JOB NO.	1708.06
FILE NAME:	1708.02-ALIGN		

NO.	DATE	REVISIONS
4	12.15.05	REVISED PROJECT TITLE
3	08.12.05	REVISED PER CLIENT COMMENTS
2	02.21.05	ADDED ALTERNATE ROUTES
1	12.12.03	SUBMITTED TO CLIENT FOR REVIEW

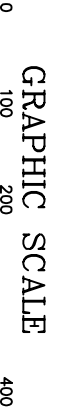
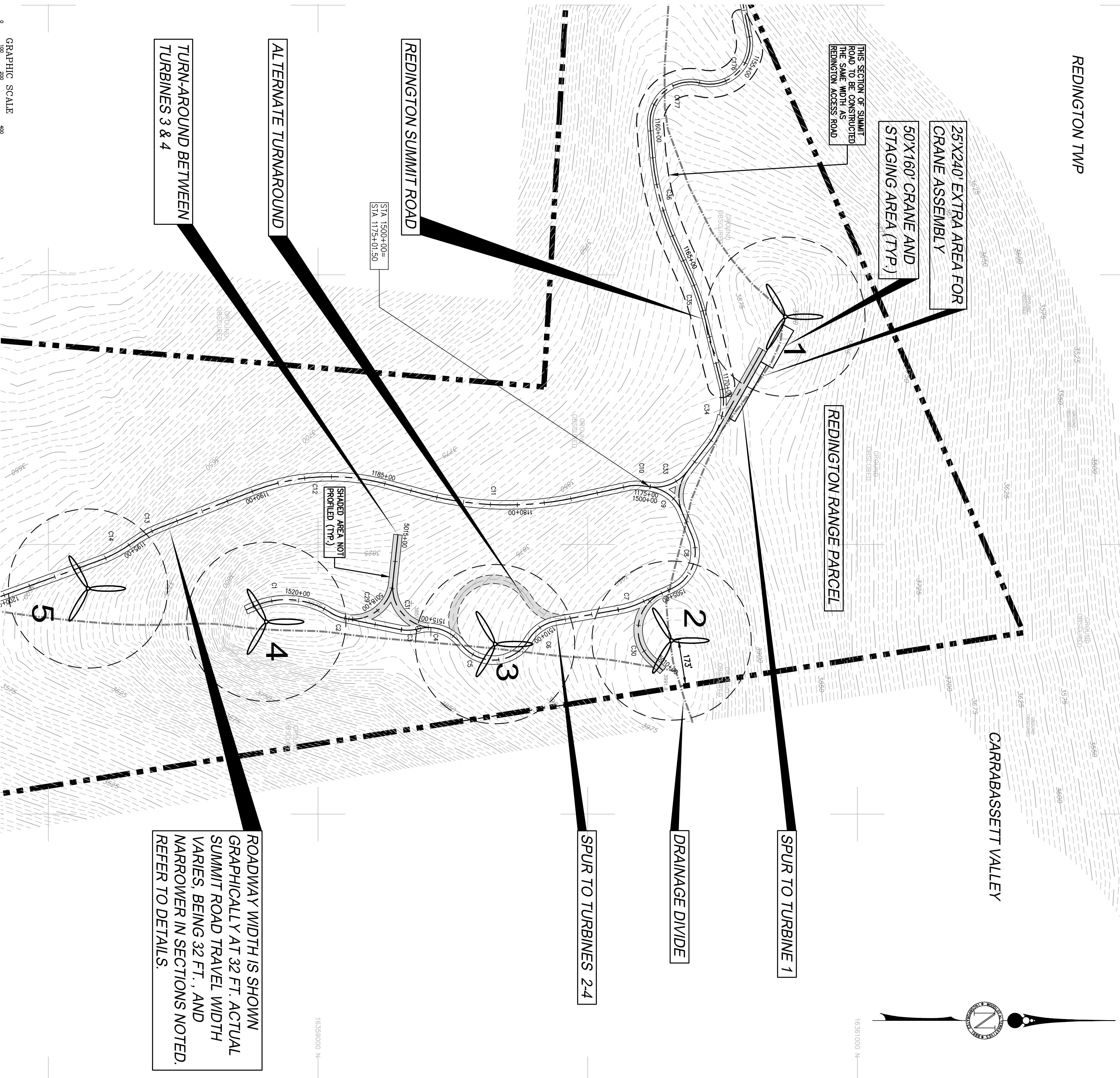


TURBINE DETAIL

CHURN	RADIUS	LENGTH	TANGENT	DELTA	PC STATION	PT STATION
C1	300.00	289.81	163.77	57°53'35"	1518+72.10	1521+71.91
C2	150.00	56.65	28.67	21°38'20"	1518+15.45	1518+72.10
C3	150.00	68.80	35.02	26°16'53"	1519+38.21	1518+72.10
C4	150.00	285.56	228.18	102°53'00"	1510+64.00	1513+58.56
C5	150.00	129.29	68.97	46°23'02"	1509+34.71	1510+64.00
C6	150.00	75.22	37.81	14°22'04"	1508+18.79	1508+94.02
C7	300.00	229.94	144.43	87°49'55"	1502+57.08	1504+87.02
C8	150.00	157.08	86.60	60°00'00"	1500+00.00	1501+85.708
C9	150.00	51.95	26.26	19°30'38"	1175+31.50	1181+44.42
C10	150.00	49.89	24.94	17°48'12"	1175+31.50	1175+44.42
C11	800.00	507.82	262.85	8°22'32"	1184+94.71	1190+02.63
C12	500.00	127.37	61.49	14°01'21"	1193+62.65	1194+85.02
C13	500.00	134.94	67.88	15°27'48"	1194+92.92	1198+27.87
C14	500.00	148.38	77.97	16°39'04"	1201+04.19	1205+52.58
C15	800.00	308.50	158.71	22°09'38"	1210+92.55	1214+02.05
C16	800.00	308.50	158.71	22°09'38"	1210+92.55	1214+02.05
C17	1200.00	276.16	146.74	52°44'36"	1210+92.55	1214+02.05
C18A	500.00	60.44	30.45	17°18'49"	1232+05.44	1232+45.88
C19	200.00	26.63	12.83	7°20'33"	1235+38.42	1235+65.05
C20	200.00	26.63	12.83	7°20'33"	1235+38.42	1235+65.05
C21	500.00	310.38	160.37	35°34'01"	1243+88.59	1248+99.97
C22	600.00	285.39	134.80	25°20'34"	1271+65.39	1284+80.42
C23	300.00	485.72	243.54	13°55'04"	1308+81.00	1313+78.75
C24	300.00	485.72	243.54	13°55'04"	1308+81.00	1313+78.75
C25	1200.00	291.49	146.47	13°55'04"	1319+42.46	1324+33.95
C26	150.00	658.87	207.71	25°14'01"	1325+01.84	1331+60.71
C27	300.00	343.35	183.24	65°34'29"	1331+60.71	1335+64.06
C28A	150.00	278.12	181.29	100°17'25"	1251+36.02	5022+43.26
C28B	150.00	278.12	181.29	100°17'25"	1251+36.02	5022+43.26
C29	150.00	285.31	225.77	158°48'00"	5013+54.46	5013+54.46
C30	300.00	531.00	282.62	100°28'27"	5016+80.00	5044+99.27
C31	150.00	157.08	86.60	60°00'00"	1175+31.50	1175+44.42
C32	250.00	225.19	120.88	51°56'33"	1172+09.71	1183+84.82
C33	1000.00	174.59	87.50	10°00'04"	1169+89.93	1167+24.88
C34	1000.00	174.59	87.50	10°00'04"	1169+89.93	1167+24.88
C35	1000.00	174.59	87.50	10°00'04"	1169+89.93	1167+24.88
C36	150.00	185.33	98.63	22°23'01"	1400+00.00	1401+95.35
C37	150.00	401.29	631.59	153°16'48"	1404+04.19	1408+05.46
C38	150.00	69.36	35.31	26°29'33"	1410+52.96	1411+22.32
C39	254.32	286.72	167.89	65°30'50"	1414+89.43	1417+88.43
C40	350.00	441.31	231.59	23°27'38"	1417+88.43	1419+17.74
C41	350.00	441.31	231.59	23°27'38"	1417+88.43	1419+17.74
C42	280.00	62.62	31.44	12°48'52"	1435+30.12	1435+32.74
C43	280.00	62.62	31.44	12°48'52"	1435+30.12	1435+32.74
C44	1710.00	727.79	368.87	241°3'04"	1440+02.45	1447+25.33
C45	380.00	130.66	65.98	19°42'04"	1453+25.71	1454+56.37
C46	292.17	113.38	57.63	25°15'40"	1457+68.70	1458+82.08
C47	1450.00	388.82	214.70	116°39'37"	1468+48.39	1471+68.38
C48	1450.00	388.82	214.70	116°39'37"	1468+48.39	1471+68.38
C49	480.00	477.15	280.38	85°27'21"	1475+71.24	1480+48.39
C50	150.00	368.71	42.67	140°30'11"	1483+09.58	1488+18.29
C51	150.00	287.98	214.23	110°00'03"	1488+01.51	1490+89.49
C52	150.00	300.25	234.05	114°1'20"	1153+96.77	1158+97.03
C53	150.00	282.89	206.67	108°03'21"	1158+97.03	1159+79.93

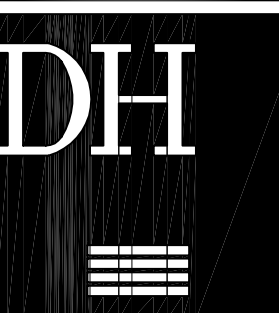
PRELIMINARY NOT FOR CONSTRUCTION

SEE SHEET C-5 FOR CONTINUATION



SEE SHEET C-7 FOR CONTINUATION

REDINGTON WIND FARM PROJECT  
REDINGTON MOUNTAIN WINDPOWER, LLC



DeLuca-Hoffman Associates, Inc.  
778 MAIN STREET, SUITE 8  
SOUTH PORTLAND, ME 04106  
207.775.1121  
WWW.DELUCAHOFFMAN.COM

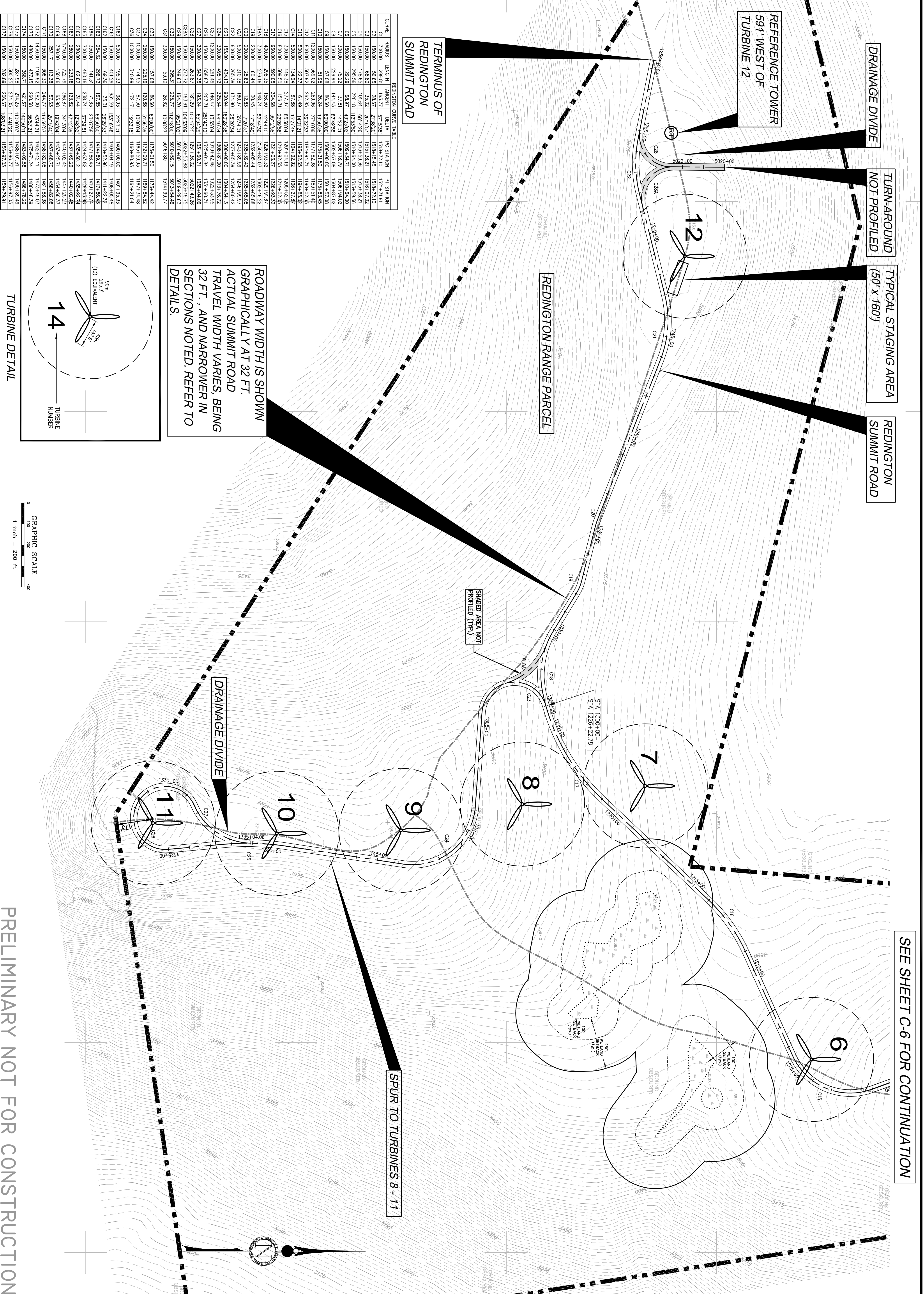
REDINGTON SUMMIT ROAD AND  
SPURS TO TURBINES 1, 2, 3 & 4

DRAWN:	KEW	DATE:	07.29.05
DESIGNED:	DDA	SCALE:	AS NOTED
CHECKED:	WGH	JOB NO.	1708.06
FILE NAME:	1708.02-ALIGN		

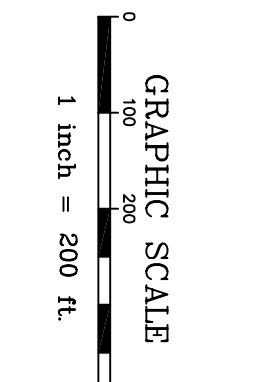
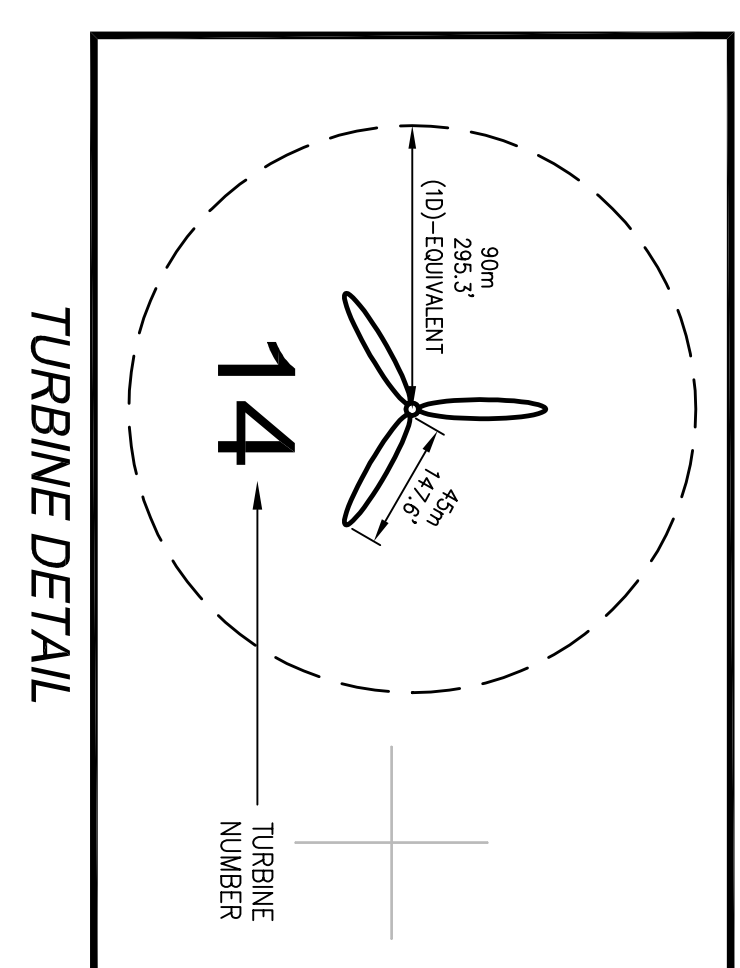
NO.	DATE	REVISIONS
4	12.15.05	REVISED SUMMIT ROAD WIDTH
3	08.12.05	REVISED PER CLIENT COMMENTS
2	07.29.05	ISSUED TO CLIENT FOR REVIEW
1	11.12.03	REVIEWED WITH CLIENT AT SITE VISIT

C-6

SHEET



CHIRK#	RADIUS	LENGTH	TANGENT	DELTA	PT STATION	TT STATION
C1	150.00	48.63	28.67	27.535°	158+41.40	158+27.02
C2	150.00	68.80	35.02	26.653°	151+58.21	156+40.02
C3	150.00	178.65	101.64	68°14'26"	151+3+59.56	151+3+59.56
C4	150.00	293.56	228.18	17°31'50"	151+0+44.00	151+0+44.00
C5	150.00	728.22	683.97	4°27'00"	150+9+34.71	150+9+44.00
C6	150.00	128.22	31.81	82°22'00"	150+9+34.71	150+9+44.00
C7	150.00	151.70	86.60	62°33'55"	150+0+00.00	150+3+02.00
C8	150.00	51.95	26.24	18°30'38"	117+9+31.50	117+9+34.46
C9	1200.00	560.02	289.98	27°10'06"	117+7+82.39	118+1+51.40
C10	150.00	507.92	282.85	36°27'32"	118+4+84.71	118+4+02.03
C11	800.00	124.94	61.88	15°27'45"	118+4+82.05	119+4+85.02
C12	800.00	124.94	61.88	83°53'56"	119+4+82.05	119+4+21.89
C13	800.00	308.50	156.71	28°38'36"	120+0+22.55	121+4+02.05
C14	800.00	506.05	304.68	35°17'58"	121+4+02.57	122+9+34.32
C15	400.00	298.35	154.50	42°44'10"	122+6+33.32	122+9+34.32
C16	300.00	278.16	148.74	52°44'36"	123+9+33.07	123+9+48.22
C17	200.00	60.44	30.45	17°18'43"	123+9+05.44	123+9+48.88
C18	200.00	26.83	12.83	72°03'51"	123+9+39.32	123+9+48.88
C19	150.00	285.39	134.90	25°30'34"	127+2+63.39	128+4+64.42
C20	150.00	434.13	300.94	16°02'36"	130+1+00.00	130+4+34.13
C21	300.00	498.72	325.54	9°44'03"	138+9+61.00	137+3+33.95
C22	150.00	658.87	207.71	25°10'12"	132+1+80.74	133+1+80.71
C23	300.00	348.33	181.24	65°34'22"	133+1+80.71	133+1+80.71
C24	150.00	273.22	193.81	104°13'05"	502+2+55.88	502+4+18.25
C25	150.00	248.63	164.70	95°21'02"	501+6+80	501+9+36.93
C26	150.00	295.31	225.77	11°24'00"	501+0+59.15	501+3+48.46
C27	300.00	531.0	282.62	10°08'27"	501+6+80	51+4+99.77
C28	150.00	151.88	86.81	60°38'02"	113+4+51.50	113+4+44.42
C29	150.00	228.18	128.88	85°08'49"	117+0+20	116+4+45.52
C30	1000.00	174.55	87.50	100°00'04"	116+4+59.53	116+4+34.46
C31	1000.00	340.99	172.17	19°21'15"	116+4+80.53	116+4+21.04
C32	500.00	193.33	98.93	22°27'00"	140+0+00.00	140+1+35.33
C33	150.00	40.29	63.39	15°31'45"	140+4+04.19	140+4+05.48
C34	150.00	398.27	181.83	6°02'33"	141+4+38.36	141+4+38.36
C35	300.00	14.31	71.63	23°01'58"	141+7+56.43	141+7+56.43
C36	700.00	460.16	238.74	37°39'51"	142+4+53.82	142+9+11.99
C37	280.00	62.62	31.44	12°48'52"	143+5+30.12	143+9+32.74
C38	170.00	222.79	368.67	24°13'04"	144+0+02.45	144+0+02.45
C39	150.00	257.17	113.38	57.63	145+2+48.70	145+8+22.08
C40	150.00	306.30	244.77	16°59'57"	145+8+22.08	146+1+38.36
C41	1450.00	1108.92	592.00	4°344'27"	146+2+42.11	147+1+48.03
C42	480.00	477.15	260.38	95°57'21"	147+5+71.24	148+1+48.39
C43	150.00	29.96	214.23	110°00'05"	148+3+09.58	148+3+09.58
C44	150.00	282.88	208.67	108°53'21"	155+4+32.03	155+4+32.03



PRELIMINARY NOT FOR CONSTRUCTION

**REDINGTON WIND FARM PROJECT**  
**REDINGTON MOUNTAIN WINDPOWER, LLC**

**DeLuca-Hoffman Associates, Inc.**  
 778 MAIN STREET, SUITE 8  
 SOUTH PORTLAND, ME 04106  
 207.775.1121  
 WWW.DELUCAHOFFMAN.COM

**C-7**

**REDINGTON SUMMIT ROAD AND SPUR TO TURBINES 8, 9, 10 & 11**

DRAWN:	KEW	DATE:	07.29.05
DESIGNED:	DDA	SCALE:	AS NOTED
CHECKED:	WGH	JOB NO.	1708.06
FILE NAME:	1708.02-ALIGN		

NO.	DATE	REVISIONS
4	12.15.05	REVISED SUMMIT ROAD WIDTH
3	08.12.05	REVISED PER CLIENT COMMENTS
2	07.29.05	ISSUED TO CLIENT FOR REVIEW
1	11.12.03	REVIEWED WITH CLIENT AT SITE VISIT

SEE SHEET C-6 FOR CONTINUATION