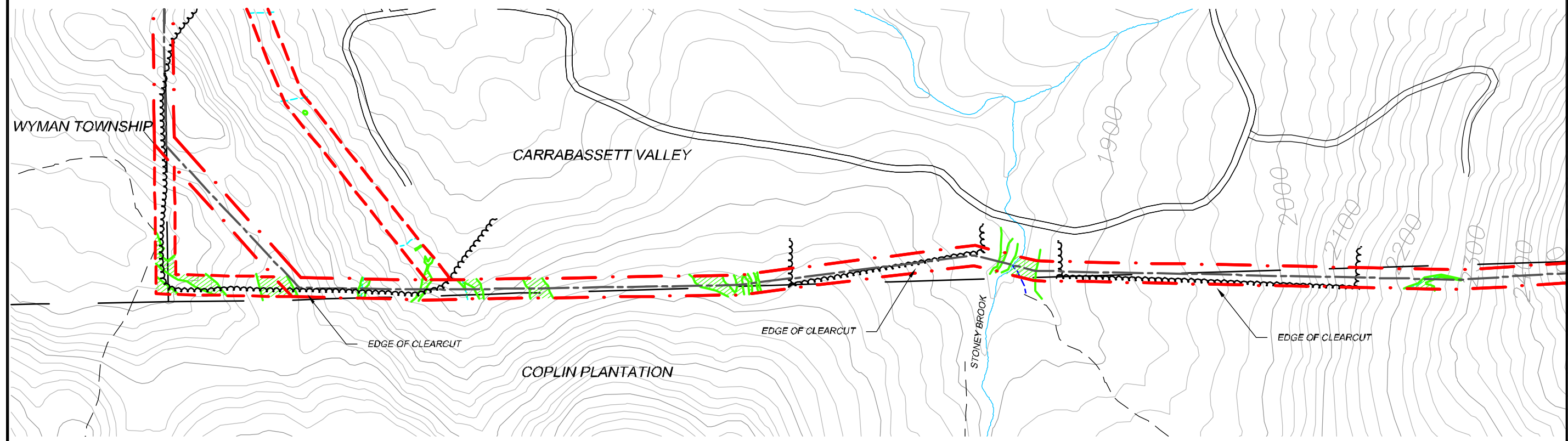
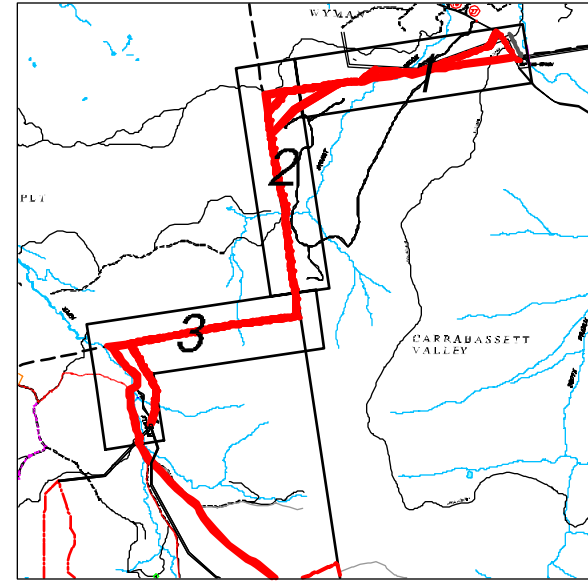
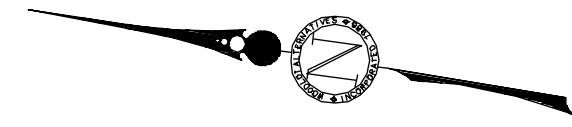
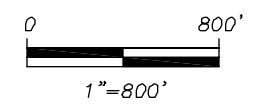


# 115kv TRANSMISSION CORRIDOR NATURAL COMMUNITY MAP



LEGEND	
	PREFERRED 115kv TRANSMISSION LINE ROUTE
	ALTERNATIVE 115kv TRANSMISSION LINE ROUTE (2000)
	WETLANDS
	INTERMITTENT STREAM (SOME OF WHICH INCLUDE WETLAND SEEPS)
	PERENNIAL STREAM
	BROOK

- Notes:
- 1) Resource boundaries as illustrated are approximate.
  - 2) All wetlands, regardless of size or type, are regulated by the US Army Corps of Engineers. All wetlands and streams, regardless of size or type, are regulated in organized towns by the Maine Department of Environmental Protection and in unorganized townships by the Maine Land Use Regulation Commission.
  - 3) Basemap data including existing roads derived from a combination of GPS survey data (1994-2005) and ME OGIS USGS Quad data.
  - 4) This map is for illustration purposes only.



SHEET 2 OF 3

PROJECT:	REDINGTON WIND FARM REDINGTON MOUNTAIN WINDPOWER, LLC
ADDRESS:	57 RIVER ROAD YARMOUTH, MAINE
SHEET TITLE:	115KV TRANSMISSION CORRIDOR NATURAL COMMUNITY MAP
SCALE:	1"=800'
DATE:	AUGUST 2005
NO.	
REVISIONS	
DATE	

PREPARED BY:

**WOODLOT**  
ALTERNATIVES, INC.  
ENVIRONMENTAL CONSULTANTS

115kv-communities.dwg

PROJ. NO. 102127  
FIGURE NO.

7-5