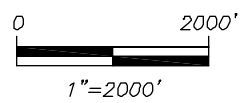


# RADAR AND MICROPHONE SITE MAP

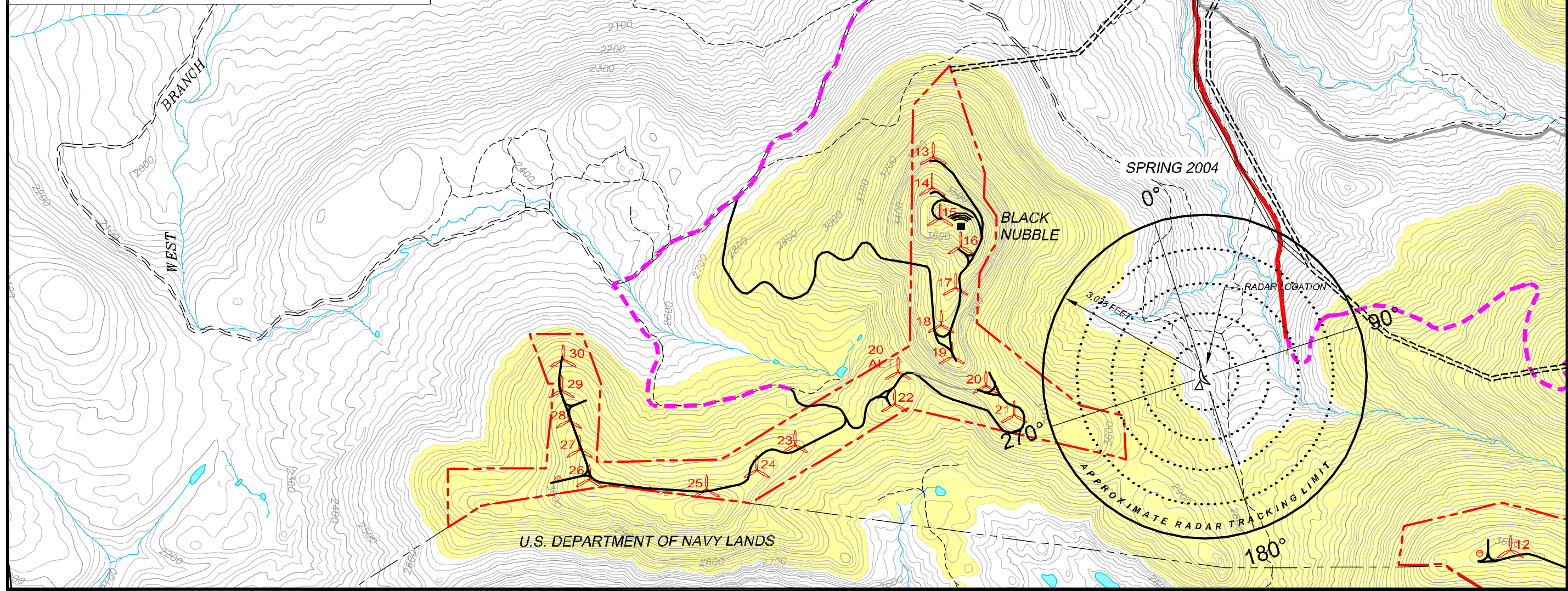
## LEGEND

- 2700' FRAGILE MOUNTAIN AREAS
- STREAM/BROOK
- 34.5kv TRANSMISSION LINE CORRIDOR
- ACCESS AND SUMMIT ROADS
- BLACK NUBBLE PARCEL BOUNDARY
- TURBINE LOCATION
- RADAR LOCATION
- MICROPHONE SITE (FALL 2002 ONLY)



### NOTE(S):

- 1) Radar site and microphone sites were located using GPS.
- 2) Basemap data including existing roads derived from a combination of GPS survey data (1994-2005) and ME OGIS USGS Quad data.
- 3) This map is for illustration purposes only.



|              |   |      |  |  |
|--------------|---|------|--|--|
|              |   |      |  |  |
| SHEET TITLE: | SONGBIRD MIGRATION<br>RADAR AND MICROPHONE SITES  |      |  |  |
| PROJECT:     | REDINGTON WIND FARM<br>REDINGTON MOUNTAIN WINDPOWER, LLC  |      |  |  |
| ADDRESS:     | 57 RIVER ROAD<br>YARMOUTH, MAINE  |      |  |  |
| SCALE:       | 1"=2000'  |      |  |  |
| DATE:        | DECEMBER 2003   |      |  |  |
| PREPARED BY: | <b>WOODLOT ALTERNATIVES, INC.</b><br>ENVIRONMENTAL CONSULTANTS<br><small>BN-migration.dwg</small> |      |  |  |
| PROJ. NO.    | 102127  |      |  |  |
| FIGURE NO.   | 7-9   |      |  |  |
| NO.          | REVISIONS   | DATE |  |  |