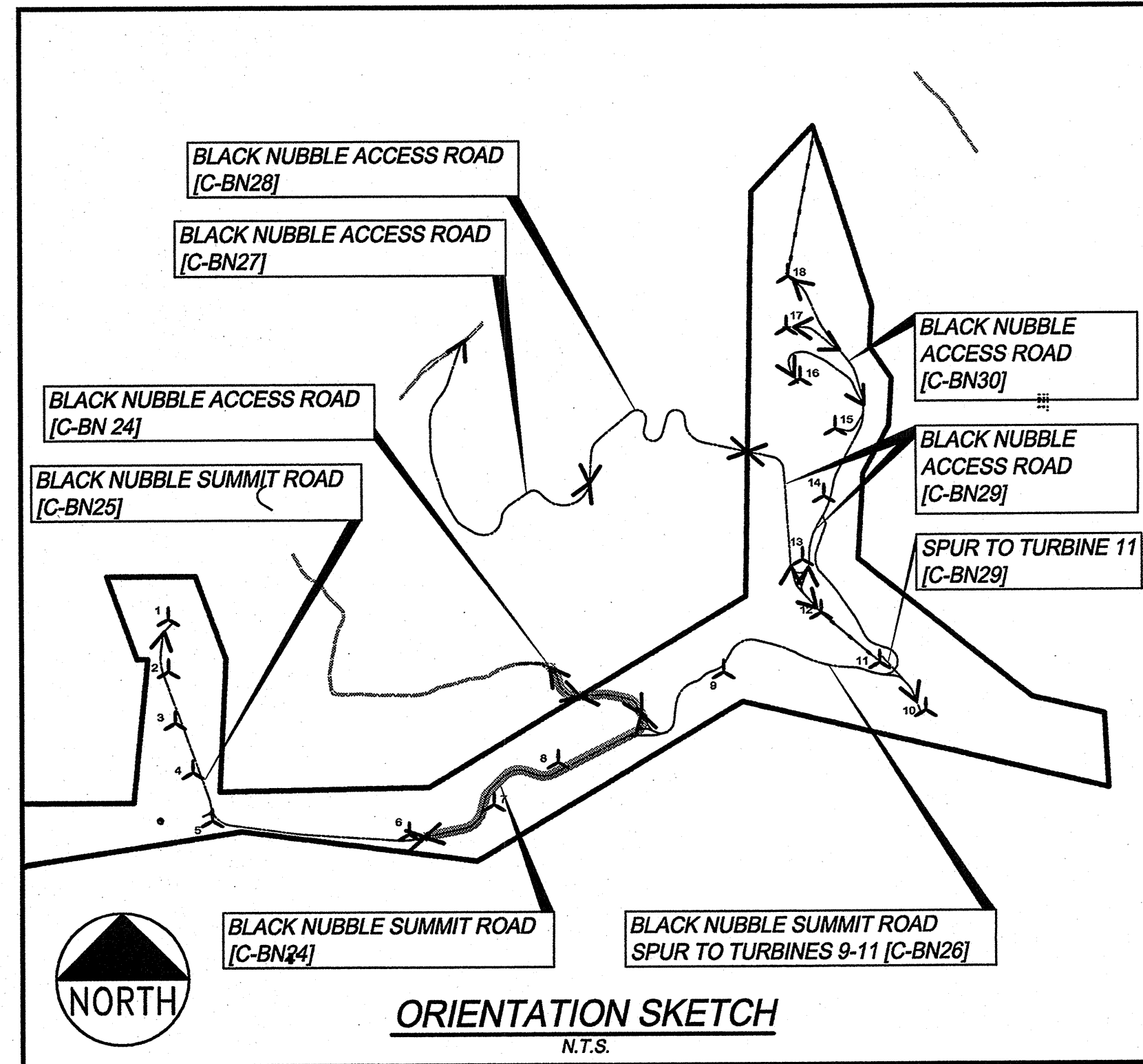
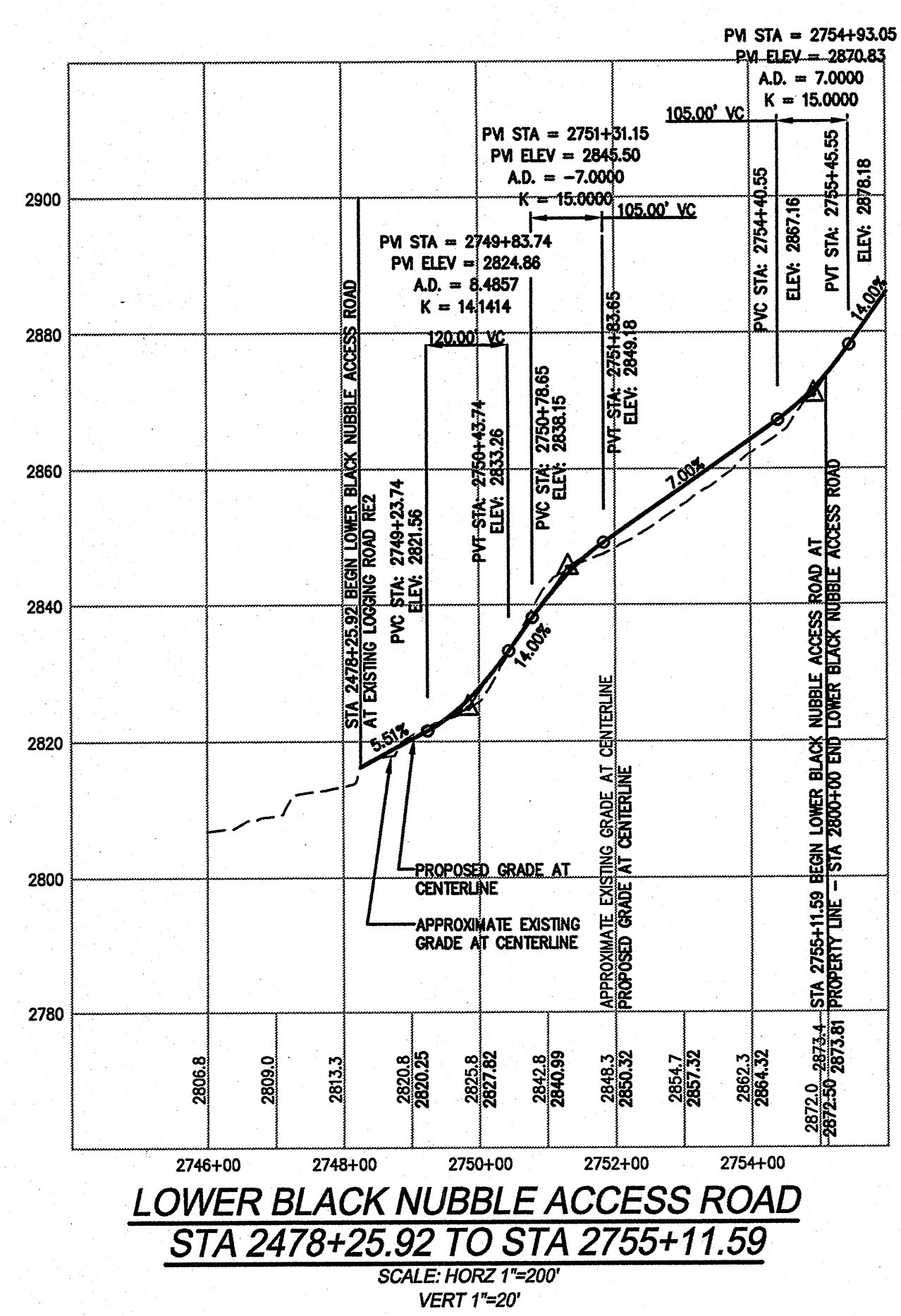
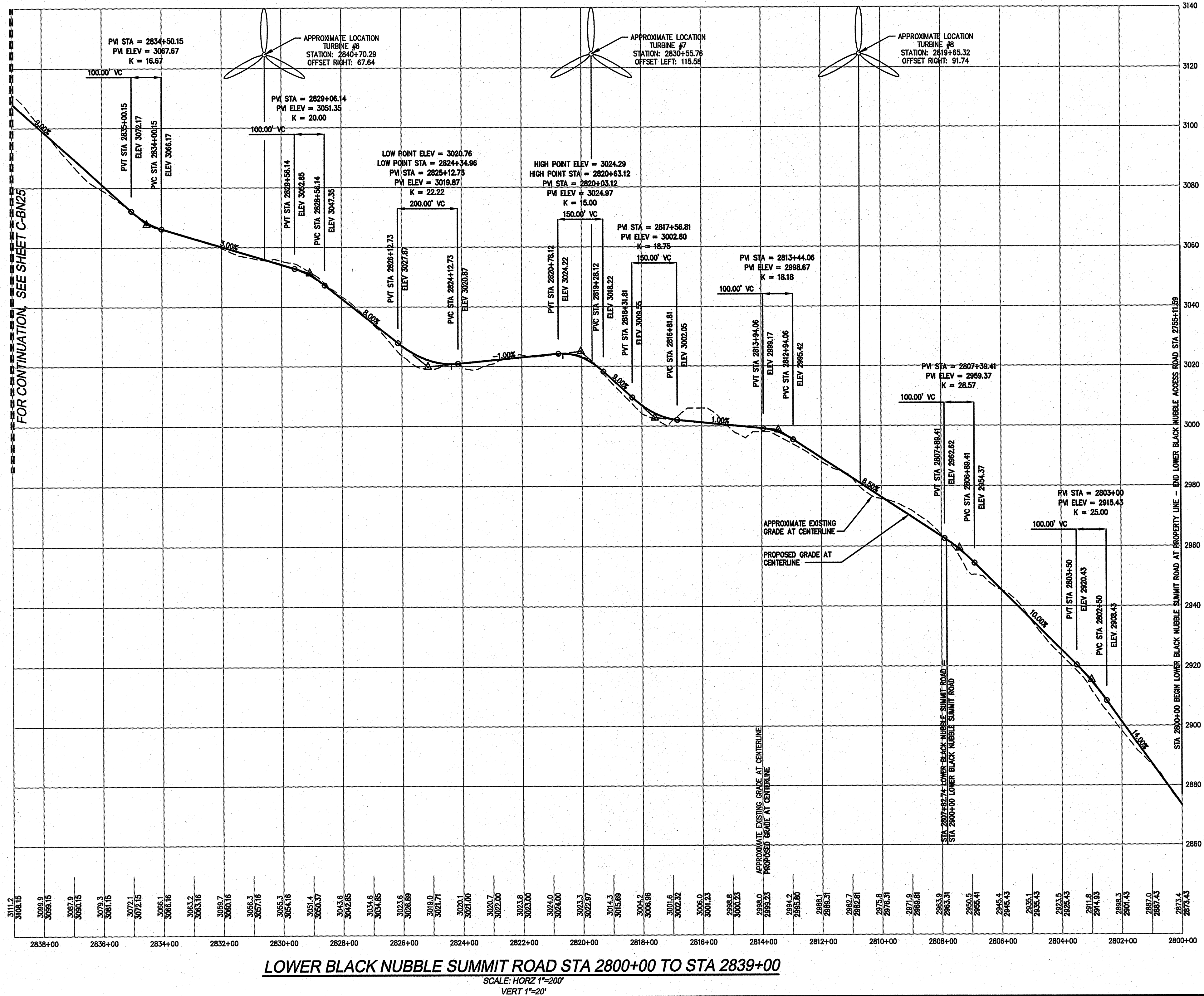


APPENDIX 2.4

Cut/Fill Road Analysis Detail (C-BN24 – C-BN30)

G:\1708.09\CONCEPT\1708.09-PROFILES-BN.dwg, C-BN24, 6/22/2007 5:26:43 PM, Jordan



NOTE:
 FOR PLAN VIEW, SEE SHEET C-BN5

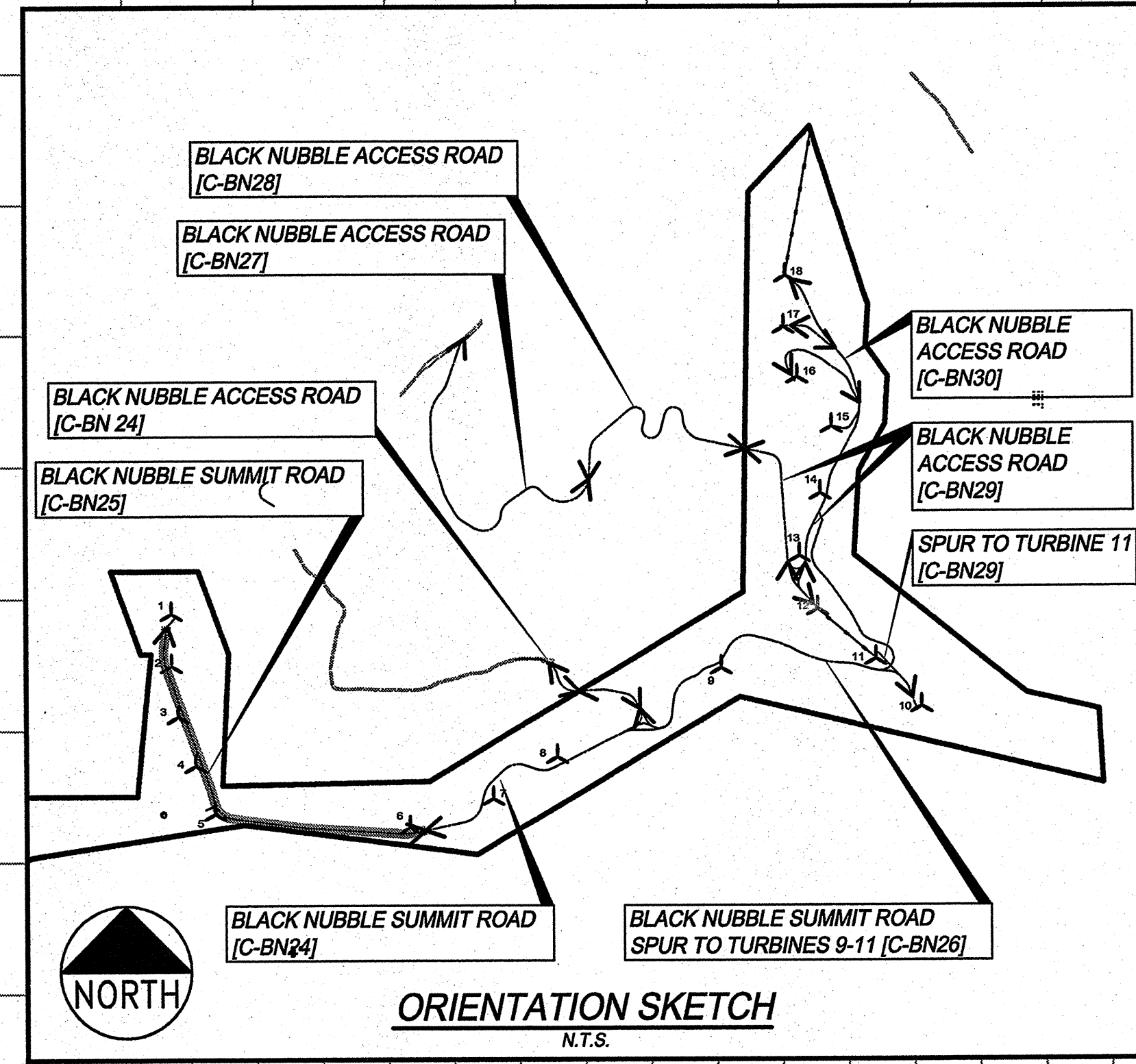
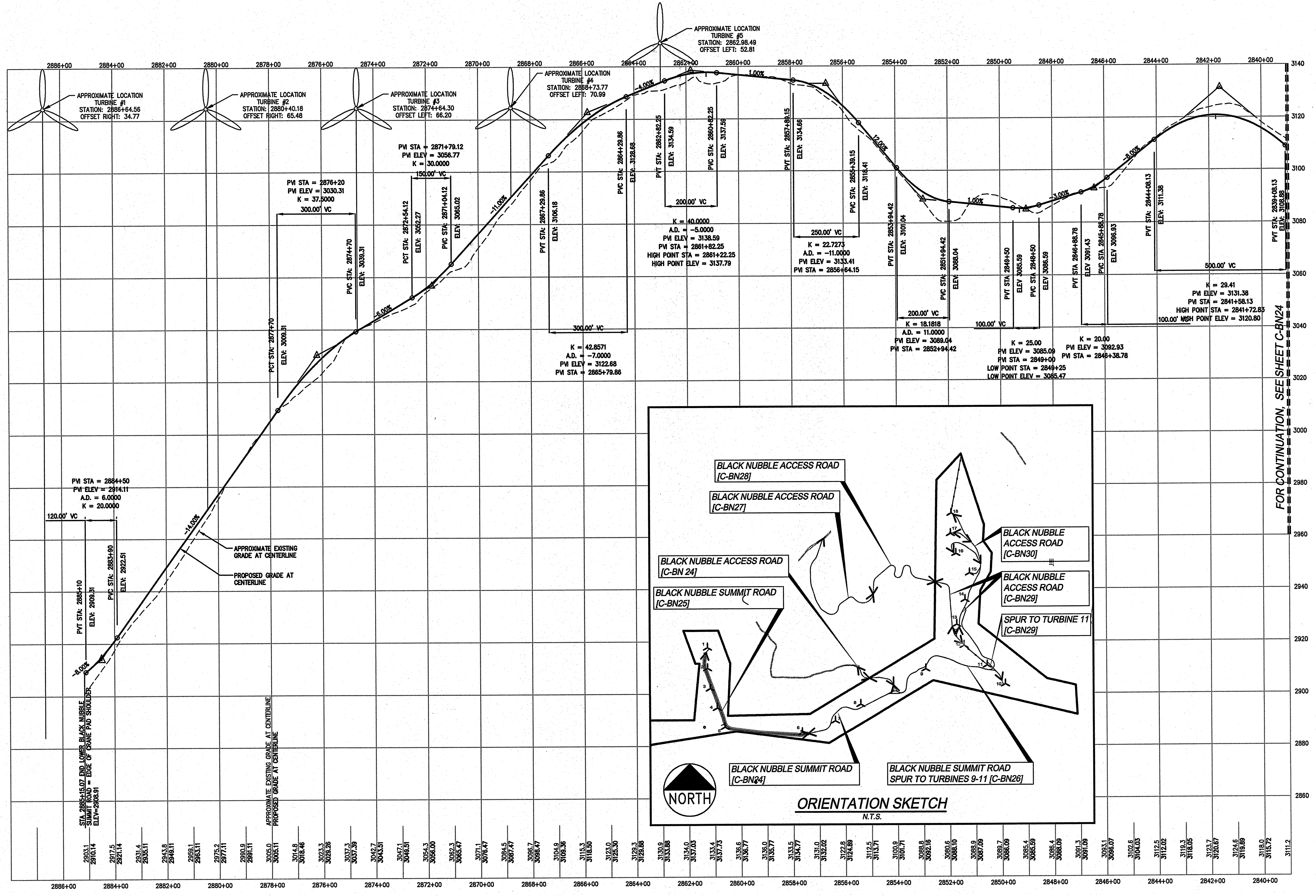
NOTE:
 SEE BLACK NUBBLE GRADING AND EROSION CONTROL PLAN SHEETS C-BN8, C-BN9 AND C-BN10 FOR CULVERT LOCATIONS AND SIZING

SCALE:
 HORIZ 1"=20'
 VERT 1"=20'

BLACK NUBBLE WIND FARM PROJECT MAINE MOUNTAIN POWER LLC		BLACK NUBBLE PROFILES	
		DRAWN: DDA DESIGNED: DDA FILE NAME: 1708.09-PROFILES-BN	SCALE: AS NOTED JOB NO. 1708.09
SHEET C-BN24		NO. DATE 3 06.22.07 2 12.06.06 1 10.31.06	REVISIONS REVISED FOR BLACK NUBBLE ONLY PROJECT DESIGN SUBMISSION FOR CLIENT REVIEW DRAFT SUBMISSION FOR CLIENT REVIEW - PARTIAL SET
DeLuca-Hoffman Associates, Inc. 778 MAIN STREET, SUITE 8 SOUTH PORTLAND, ME 04106 207.775.1121 www.delucahoffman.com		MORTENSON M.A. Mortenson Company 700 Meadow Lane North Minneapolis, MN 55440	

NOTE:
FOR PLAN VIEW, SEE SHEET C-BN5

NOTE:
SEE BLACK NUBBLE GRADING AND EROSION CONTROL PLAN SHEETS C-BN10, C-BN11 AND C-BN12 FOR CULVERT LOCATIONS AND SIZING



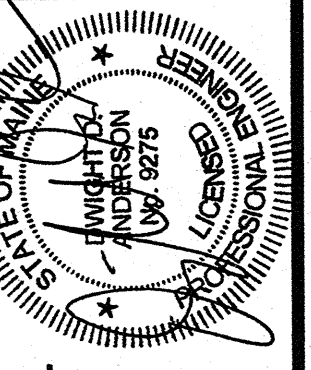
LOWER BLACK NUBBLE SUMMIT ROAD STA 2839+00 TO STA 2885+15.07
SCALE: HORIZ 1"=20'
VERT 1"=20'

SCALE:
HORIZ 1"=20'
VERT 1"=20'

BLACK NUBBLE PROFILES

DRAWN:	DED	SCALE:	AS NOTED
DESIGNED:	DDA	JOB NO.	1708.09
FILE NAME:	1708.09-PROFILES-BN		
MORTENSON			
M.A. Mortenson Company 700 Meadow Lane North Minneapolis, MN 55440			

**BLACK NUBBLE WIND FARM PROJECT
MAINE MOUNTAIN POWER LLC**

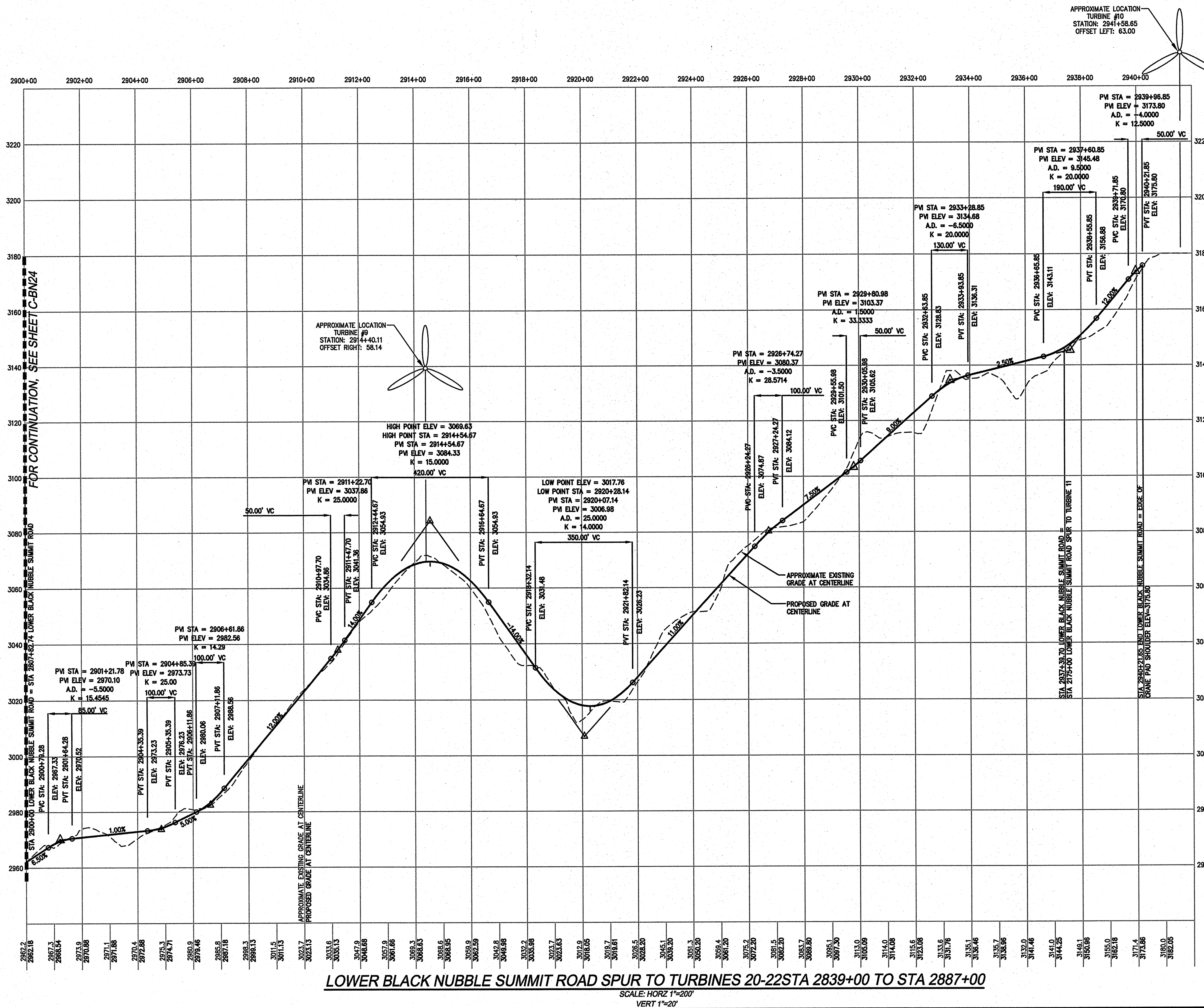


Deluca-Hoffman Associates, Inc.
778 MAIN STREET, SUITE 8
SOUTH PORTLAND, ME 04106
207.775.1121
www.delucahoffman.com

SHEET

C-BN25

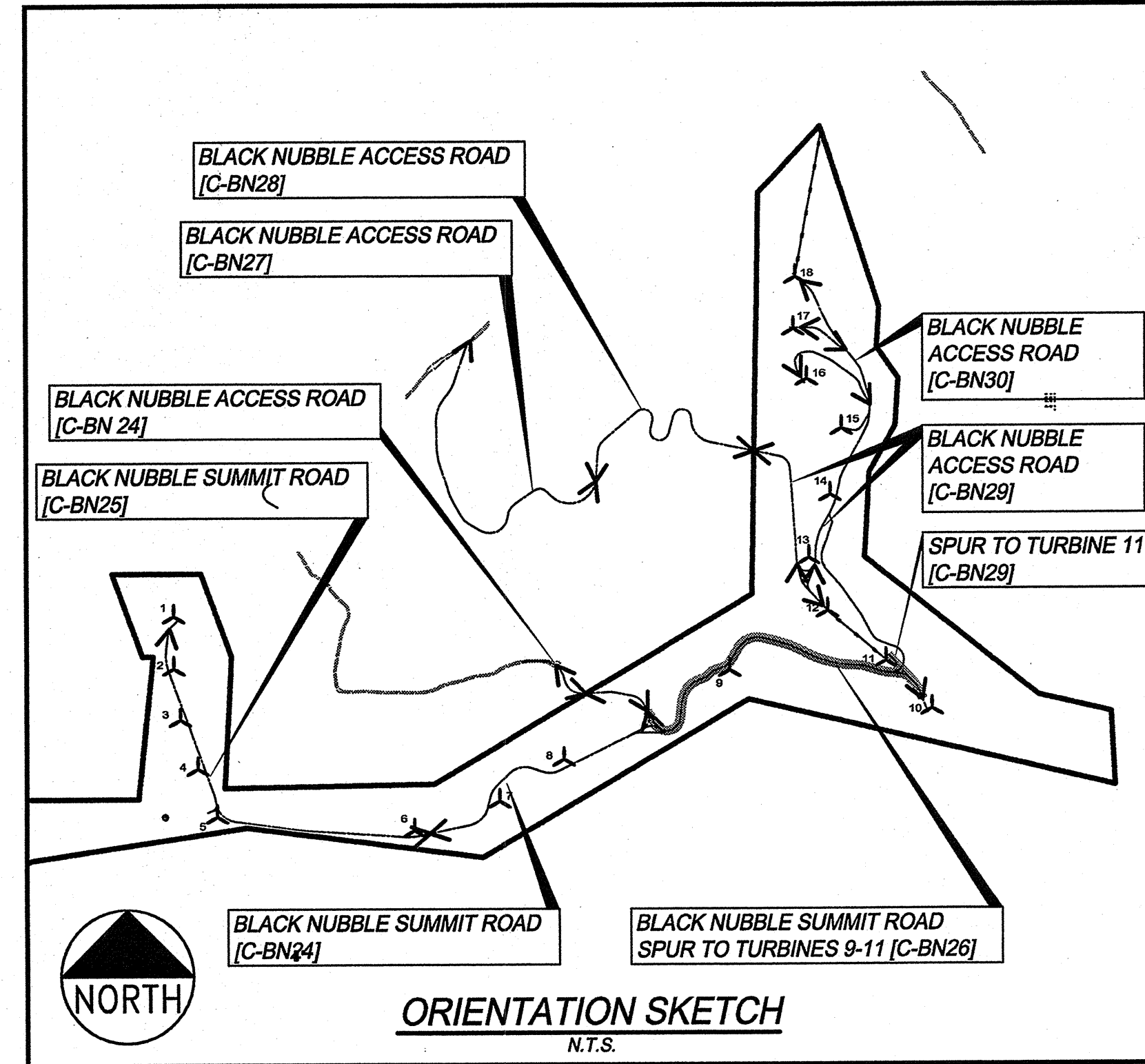
NO.	DATE	REVISIONS
3	06.22.07	REVISED FOR BLACK NUBBLE ONLY PROJECT
2	12.06.06	DESIGN SUBMISSION FOR CLIENT REVIEW
1	10.31.06	DRAFT SUBMISSION FOR CLIENT REVIEW - PARTIAL SET



LOWER BLACK NUBBLE SUMMIT ROAD SPUR TO TURBINES 20-22 STA 2839+00 TO STA 2887+00

SCALE: HORIZ 1"=200'
VERT 1"=20'

APPROXIMATE LOCATION
TURBINE #10
STATION: 2941+58.85
OFFSET LEFT: 63.00



NOTE:
FOR PLAN VIEW, SEE SHEETS C-BN5 AND C-BN6

NOTE:
SEE BLACK NUBBLE GRADING AND EROSION CONTROL PLAN SHEETS C-BN8, C-BN14, C-BN15 AND C-BN16 FOR CULVERT LOCATIONS AND SIZING

SCALE:
HORIZ 1"=200'
VERT 1"=20'

BLACK NUBBLE PROFILES		NO.	DATE	REVISIONS
3	06.22.07	REVISED FOR BLACK NUBBLE ONLY PROJECT		
2	12.06.06	DESIGN SUBMISSION FOR CLIENT REVIEW		
1	10.31.06	DRAFT SUBMISSION FOR CLIENT REVIEW - PARTIAL SET		

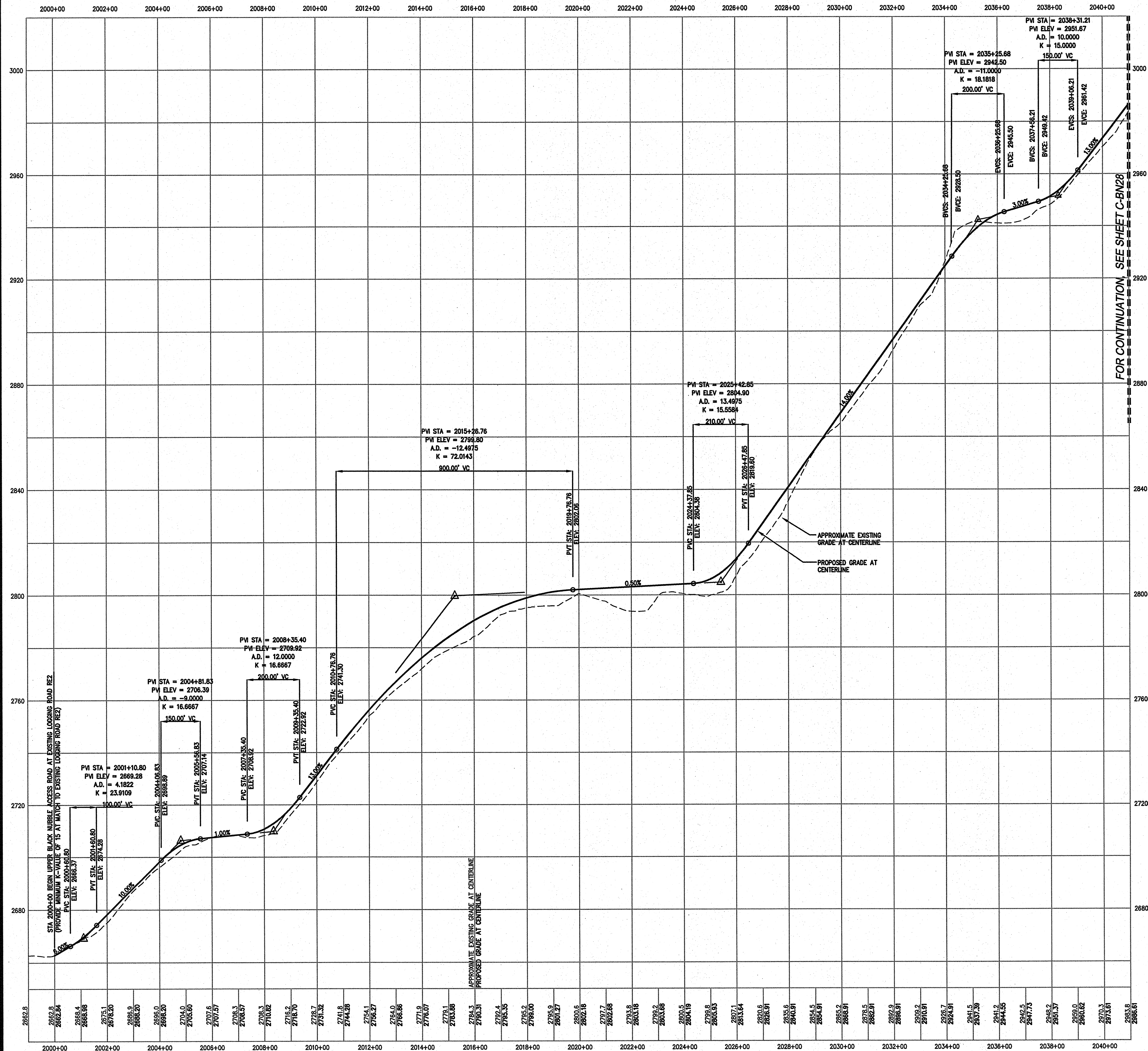
DRAWN:	DED	SCALE:	AS NOTED
DESIGNED:	DDA	JOB NO.	1708.09
FILE NAME:	1708.09-PROFILES-BN		

MORTENSON
M.A. Mortenson Company
700 Meadow Lane North
Minneapolis, MN 55440

BLACK NUBBLE WIND FARM PROJECT MAINE MOUNTAIN POWER LLC	DelLuca-Hoffman Associates, Inc. 778 MAIN STREET, SUITE 8 SOUTH PORTLAND, ME 04106 207.775.1121 www.delucahoffman.com
--	---

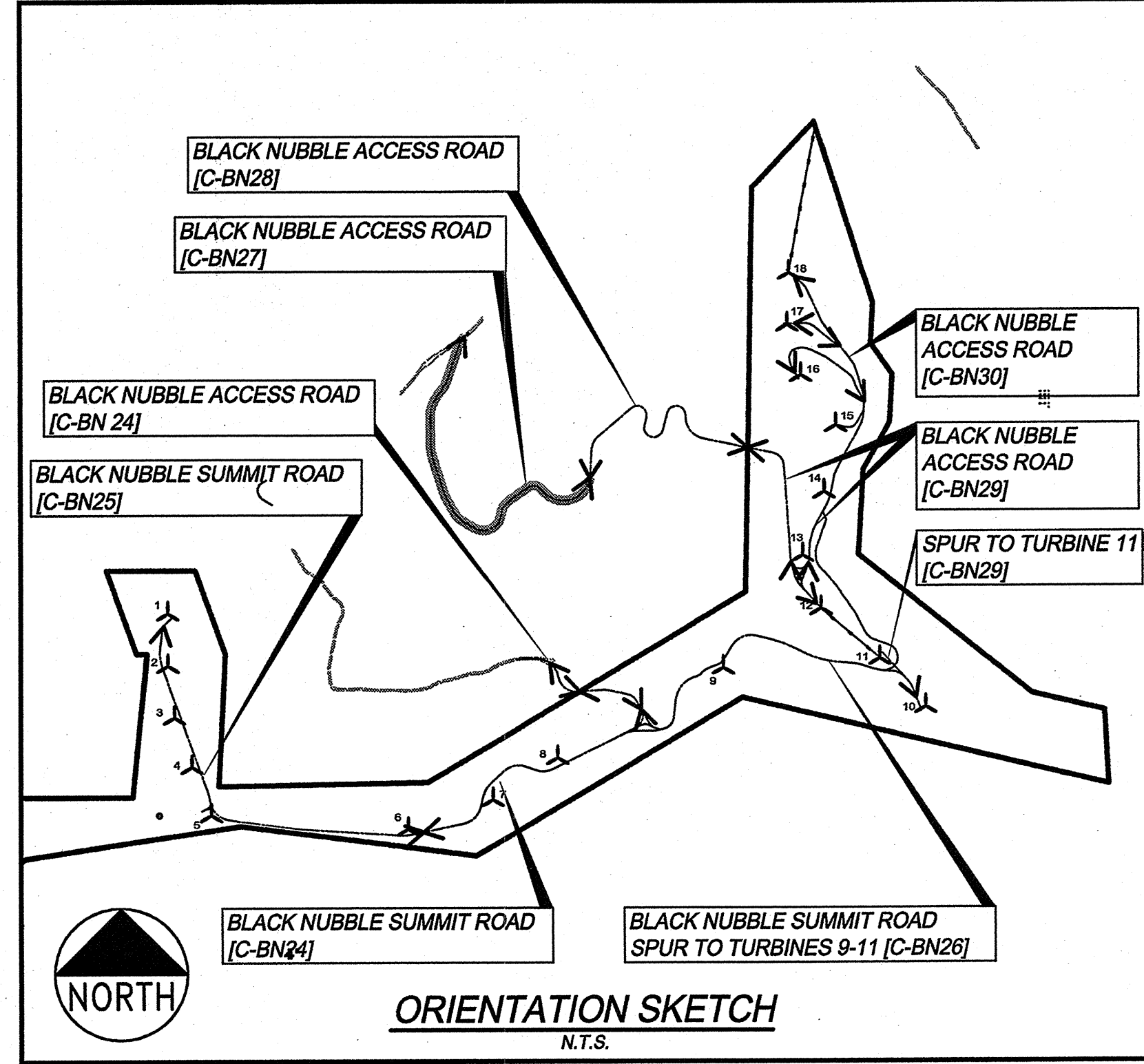
SHEET
C-BN26

G:\1708.09\CONCEPT\1708.09-PROFILES-BN.dwg, C-BN26, 6/22/2007 5:34:58 PM, Jordan



UPPER BLACK NUBBLE ACCESS ROAD STA 2000+00 TO STA 2041+00

SCALE: HORZ 1"=200'
VERT 1"=20'



NOTE:
FOR PLAN VIEW, SEE SHEET C-BN7

NOTE:
SEE BLACK NUBBLE GRADING AND EROSION CONTROL PLAN SHEETS C-BN17, C-BN18 AND C-BN19 FOR CULVERT LOCATIONS AND SIZING

SCALE:
HORZ 1"=200'
VERT 1"=20'

BLACK NUBBLE PROFILES

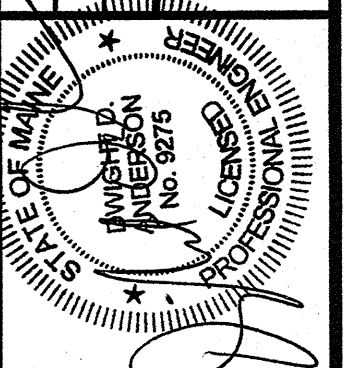
BLACK NUBBLE WIND FARM PROJECT
MAINE MOUNTAIN POWER LLC

SHEET

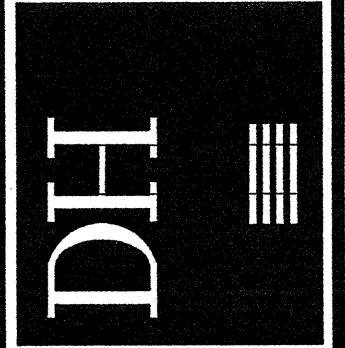
C-BN27

NO.	DATE	REVISIONS
3	06.22.07	REVISED FOR BLACK NUBBLE ONLY PROJECT
2	12.06.06	DESIGN SUBMISSION FOR CLIENT REVIEW
1	10.31.06	DRAFT SUBMISSION FOR CLIENT REVIEW - PARTIAL SET

DRAWN:	DED	SCALE:	AS NOTED
DESIGNED:	DDA	JOB NO.	1708.09
FILE NAME:	1708.09-PROFILES-BN		
MORTENSON		M.A. Mortenson Company	
		700 Meadow Lane North	
		Minneapolis, MN 55440	

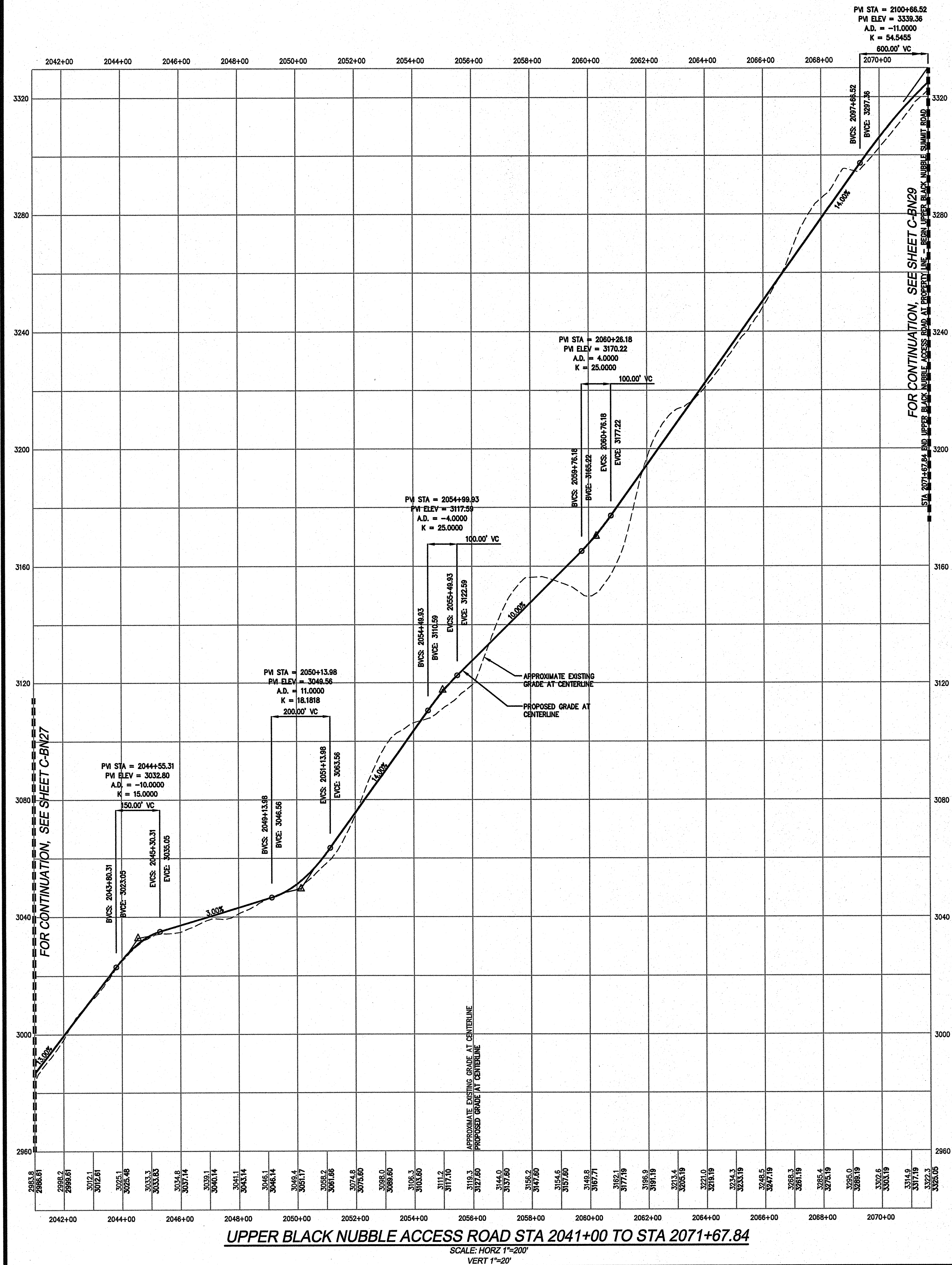


DeLuca-Hoffman Associates, Inc.
778 MAIN STREET, SUITE 8
SOUTH PORTLAND, ME 04106
207.775.1121
www.delucahoffman.com

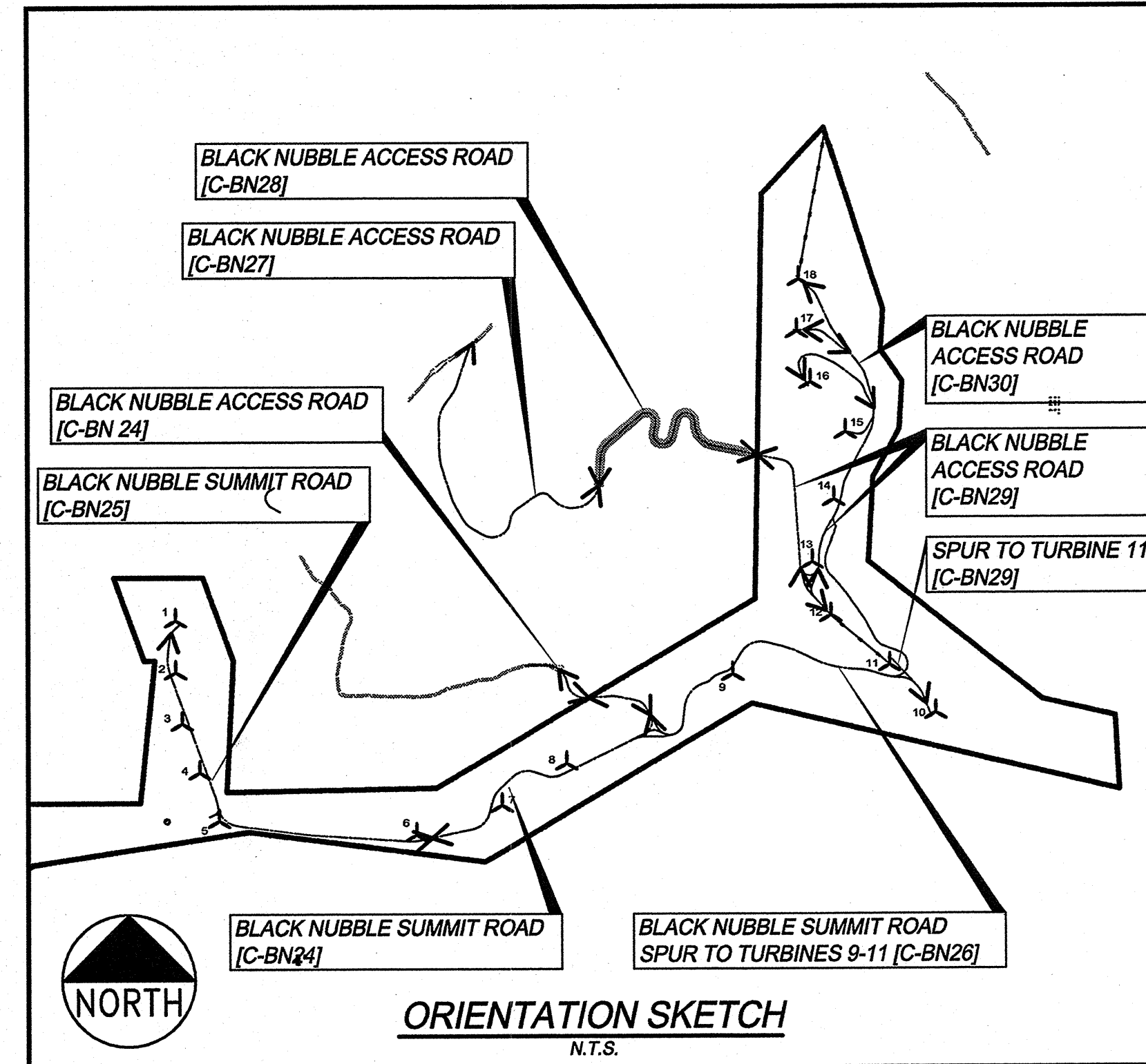


G:\1708.09\CONCEPT\1708.09-PROFILES-BN.dwg, C-BN27, 6/22/2007 5:37:50 PM, Jordan

G:\1708.09\CONCEPT\1708.09-PROFILES-BN.dwg, C-BN28, 6/22/2007 5:38:15 PM, Jordan



UPPER BLACK NUBBLE ACCESS ROAD STA 2041+00 TO STA 2071+67.84
SCALE: HORIZ 1"=200'
VERT 1"=20'



NOTE:
FOR PLAN VIEW, SEE SHEET C-BN7

NOTE:
SEE BLACK NUBBLE GRADING AND EROSION CONTROL PLAN SHEETS C-BN19 AND C-BN20 FOR CULVERT LOCATIONS AND SIZING

SCALE:
HORIZ 1"=200'
VERT 1"=20'

NO.	DATE	REVISIONS
3	06.22.07	REVISED FOR BLACK NUBBLE ONLY PROJECT
2	12.06.06	DESIGN SUBMISSION FOR CLIENT REVIEW
1	10.31.06	DRAFT SUBMISSION FOR CLIENT REVIEW - PARTIAL SET

BLACK NUBBLE PROFILES

SCALE: AS NOTED
JOB NO. 1708.09
DRAWN: DED
DESIGNED: DDA
FILE NAME: 1708.09-PROFILES-BN

MORTENSON
M.A. Mortenson Company
700 Meadow Lane North
Minneapolis, MN 55440

**BLACK NUBBLE WIND FARM PROJECT
MAINE MOUNTAIN POWER LLC**

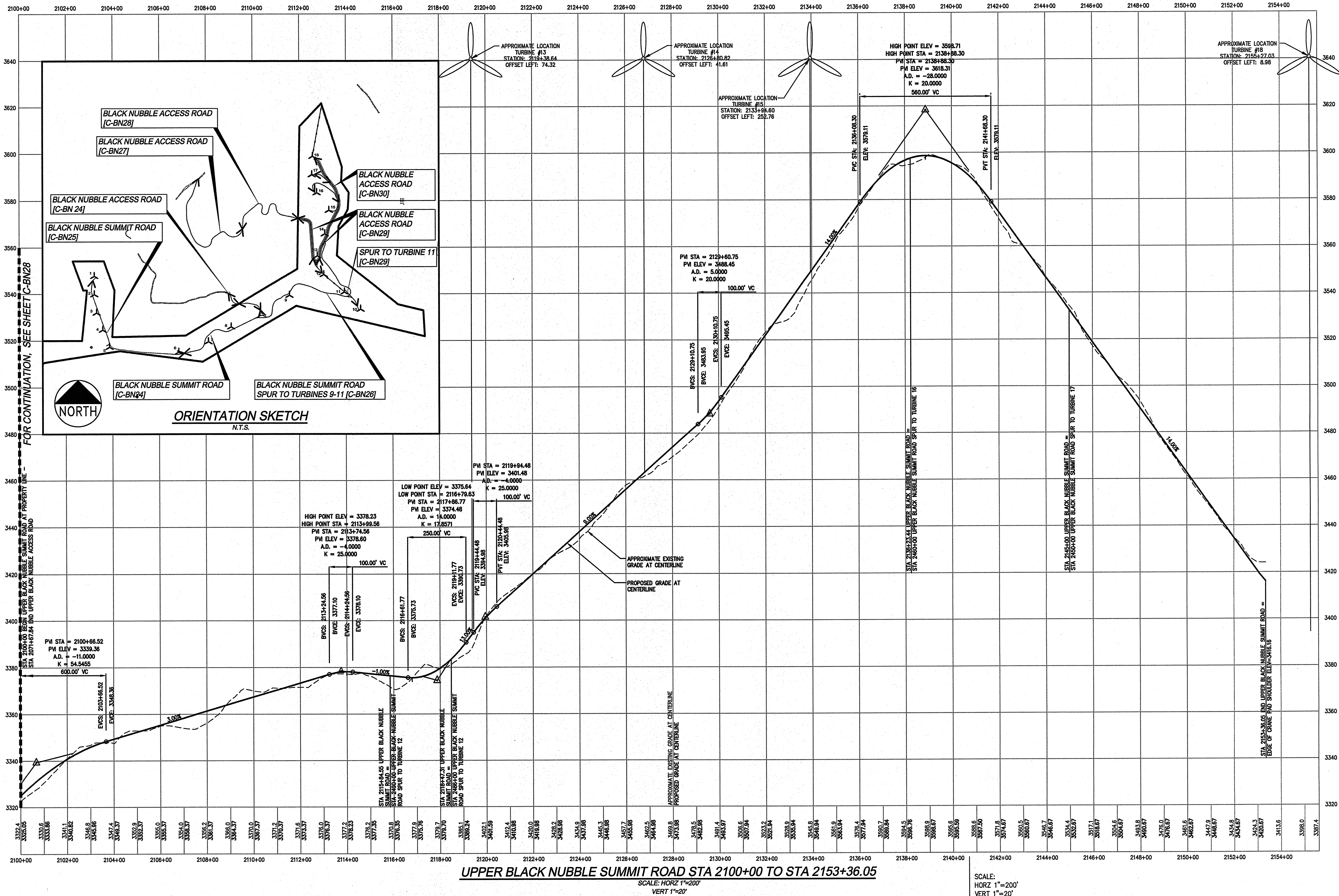
Deluca-Hoffman Associates, Inc.
778 MAIN STREET, SUITE 8
SOUTH PORTLAND, ME 04106
207.775.1121
www.delucahoffman.com

STATE OF MAINE
Professional Seal
Professional Engineer
No. 10875
Date Rec'd 06/22/07

SHEET
C-BN28

NOTE:
FOR PLAN VIEW, SEE SHEET C-BN7

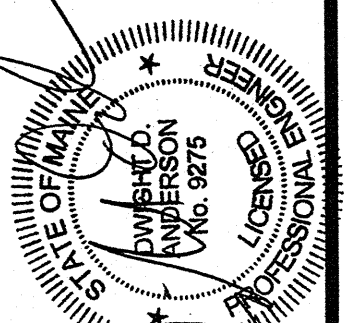
NOTE:
SEE BLACK NUBBLE GRADING AND EROSION
CONTROL PLAN SHEETS C-BN20, C-BN21, C-BN22
AND C-BN23 FOR CULVERT LOCATIONS AND SIZING



BLACK NUBBLE PROFILES

**BLACK NUBBLE WIND FARM PROJECT
MAINE MOUNTAIN POWER LLC**

DH
DeLuca-Hoffman Associates, Inc.
778 MAIN STREET, SUITE 8
SOUTH PORTLAND, ME 04106
207.775.1121
www.delucahoffman.com



MORTENSON
M.A. Mortenson Company
700 Meadow Lane North
Minneapolis, MN 55440

NO.	DATE	REVISIONS
3	06.22.07	REVISED FOR BLACK NUBBLE ONLY PROJECT
2	12.06.06	DESIGN SUBMISSION FOR CLIENT REVIEW
1	10.31.06	DRAFT SUBMISSION FOR CLIENT REVIEW - PARTIAL SET

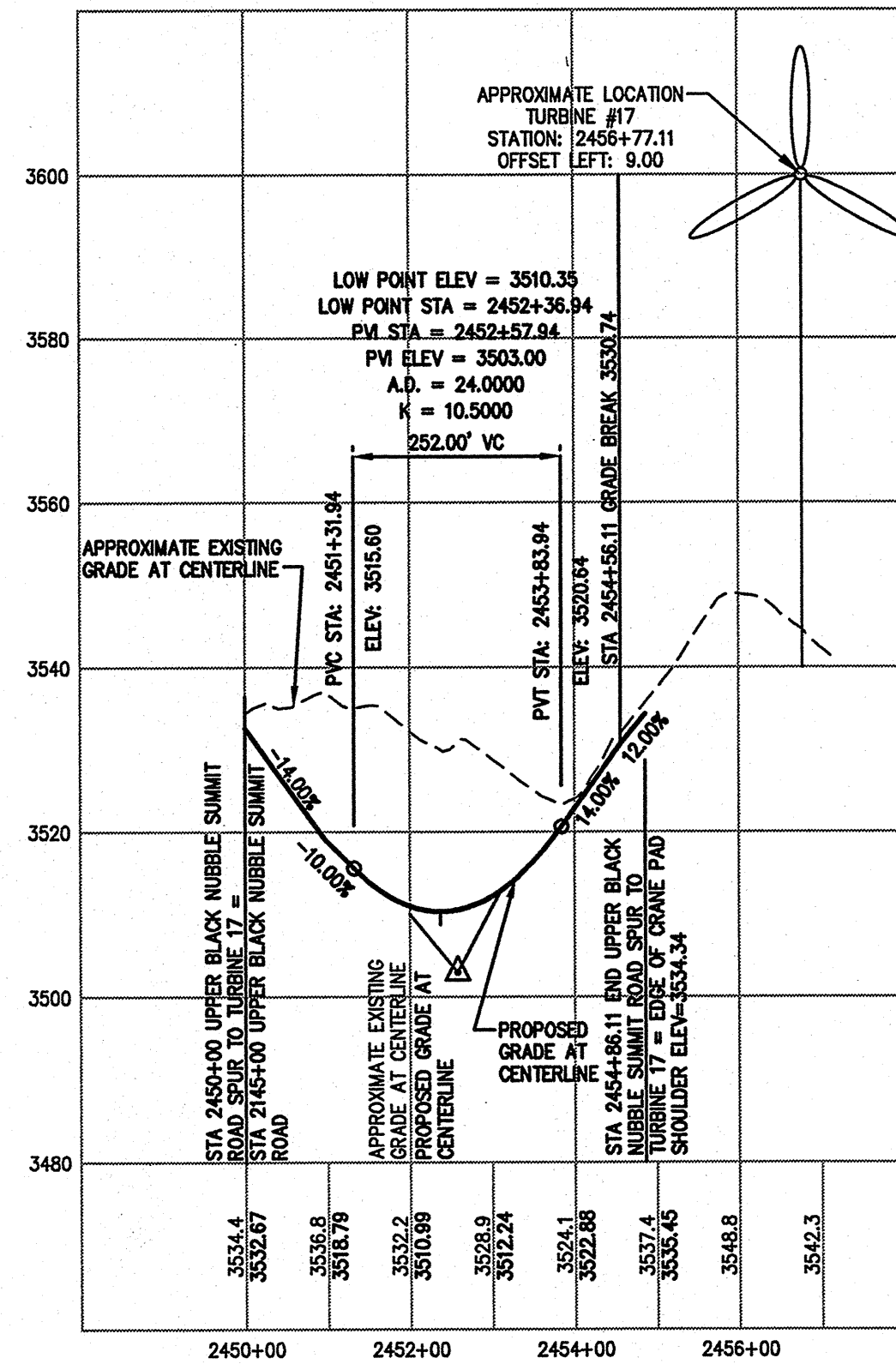
SHEET

C-BN29

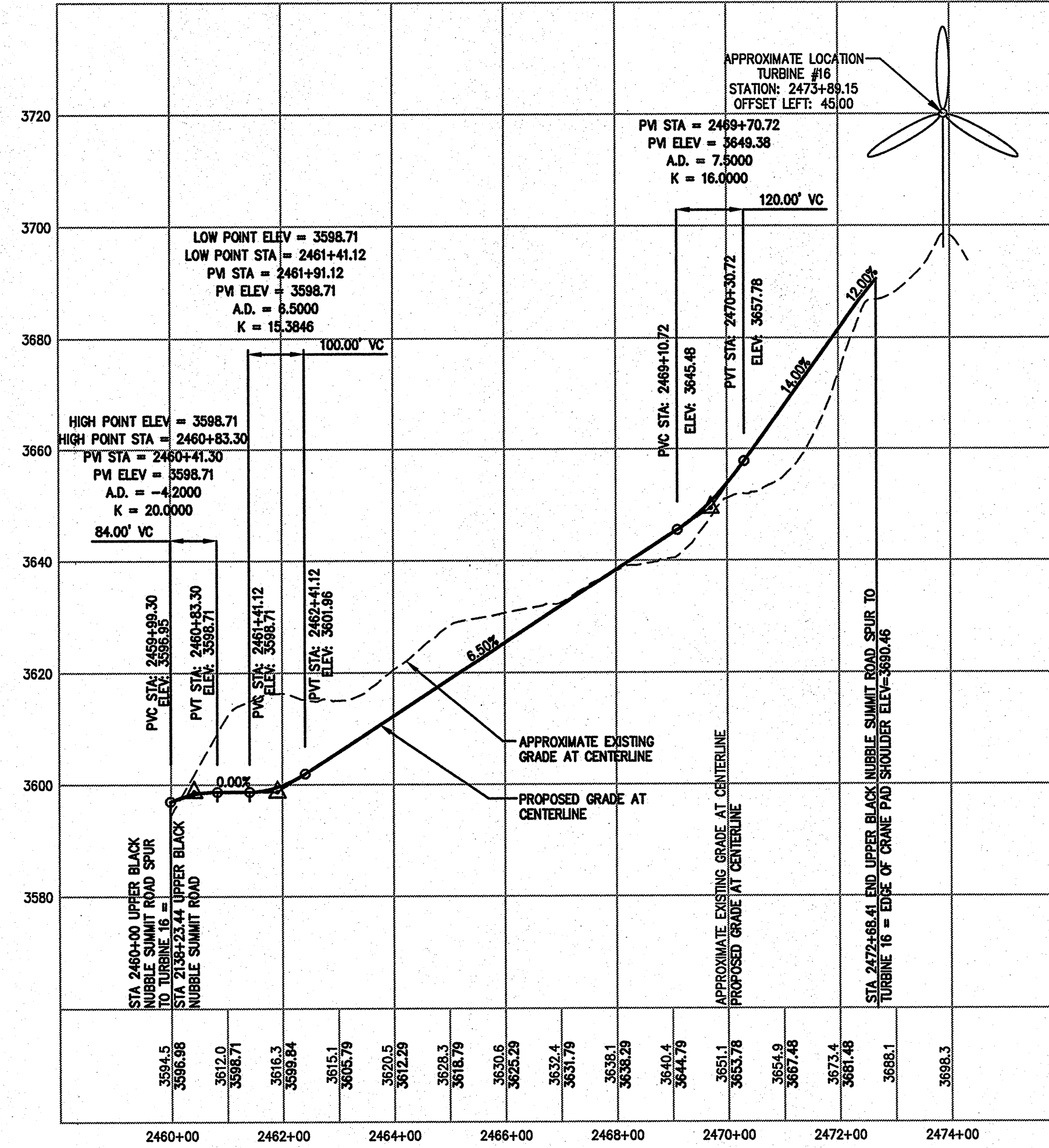
SCALE:
HORIZ 1"=200'
VERT 1"=20'

UPPER BLACK NUBBLE SUMMIT ROAD STA 2100+00 TO STA 2153+36.05
SCALE: HORIZ 1"=200'
VERT 1"=20'

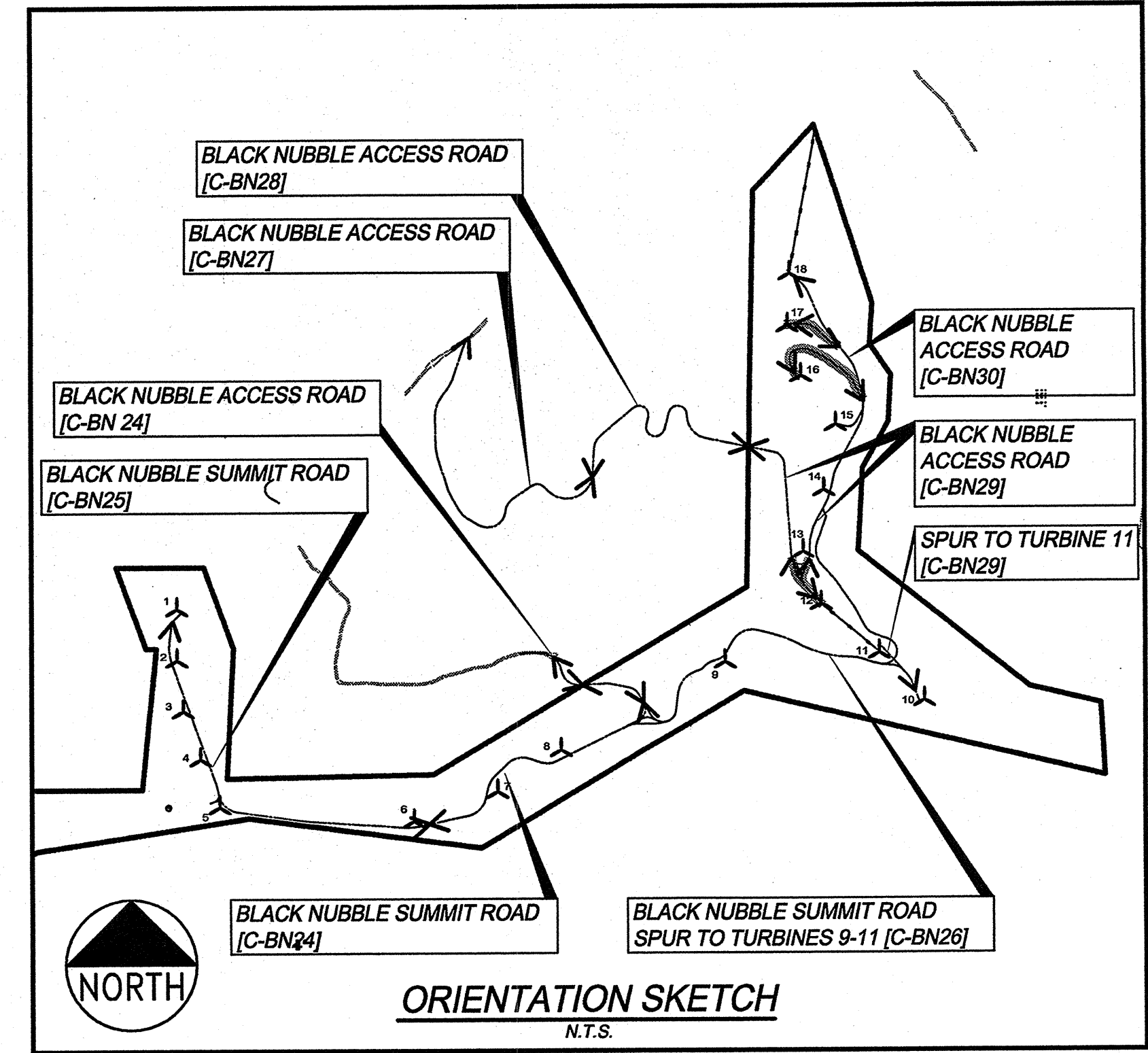
G:\1708.09\CONCEPT\1708.09-PROFILES-BN.dwg, C-BN29, 6/22/2007 5:38:40 PM, Jordan



UPPER BLACK NUBBLE SUMMIT ROAD SPUR TO TURBINE 14 STA 2450+00 TO STA 2454+86.11
SCALE: HORZ 1"=200'
VERT 1"=20'

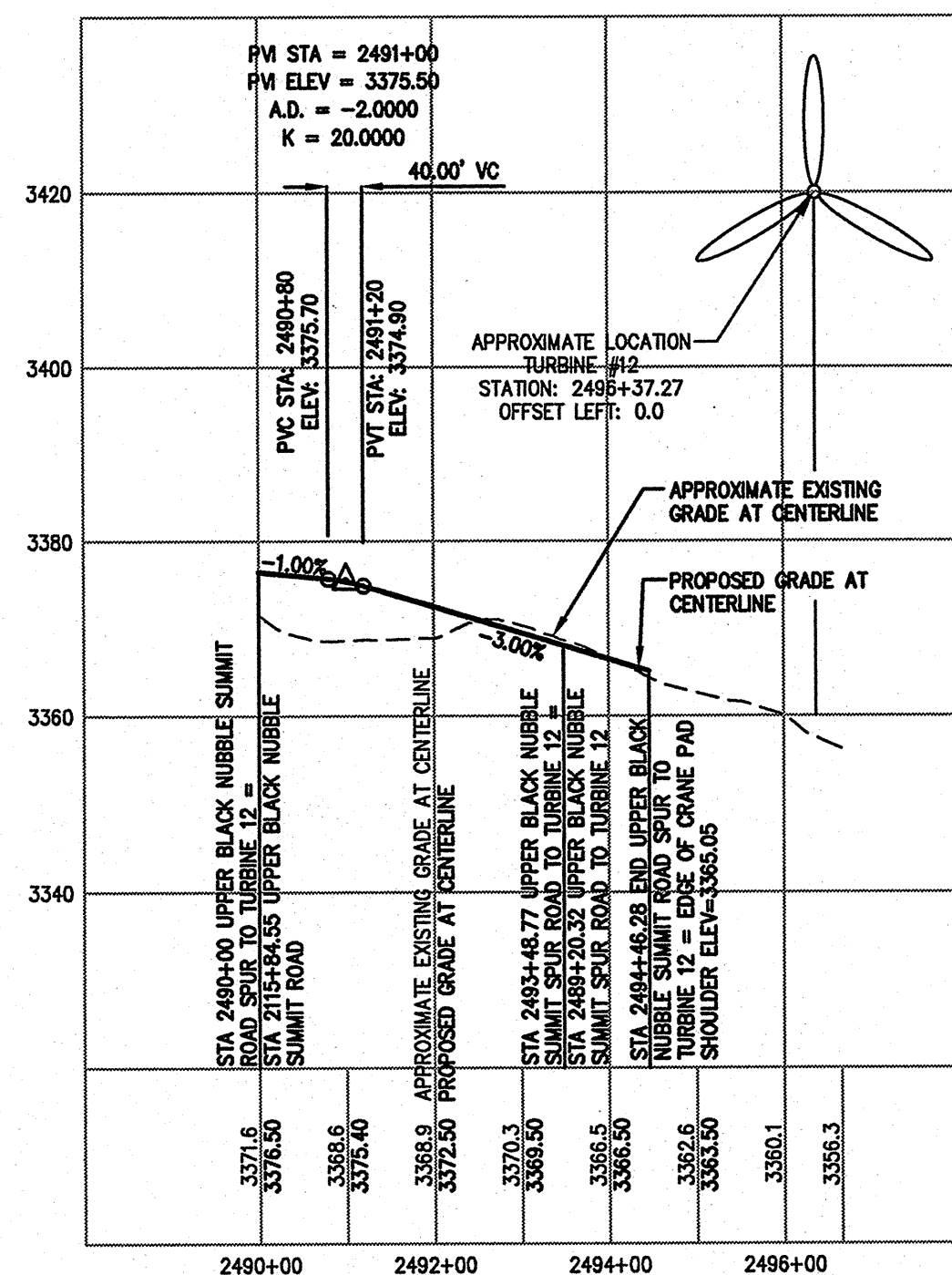


UPPER BLACK NUBBLE SUMMIT ROAD SPUR TO TURBINE 15 STA 2460+00 TO STA 2472+68.41
SCALE: HORZ 1"=200'
VERT 1"=20'

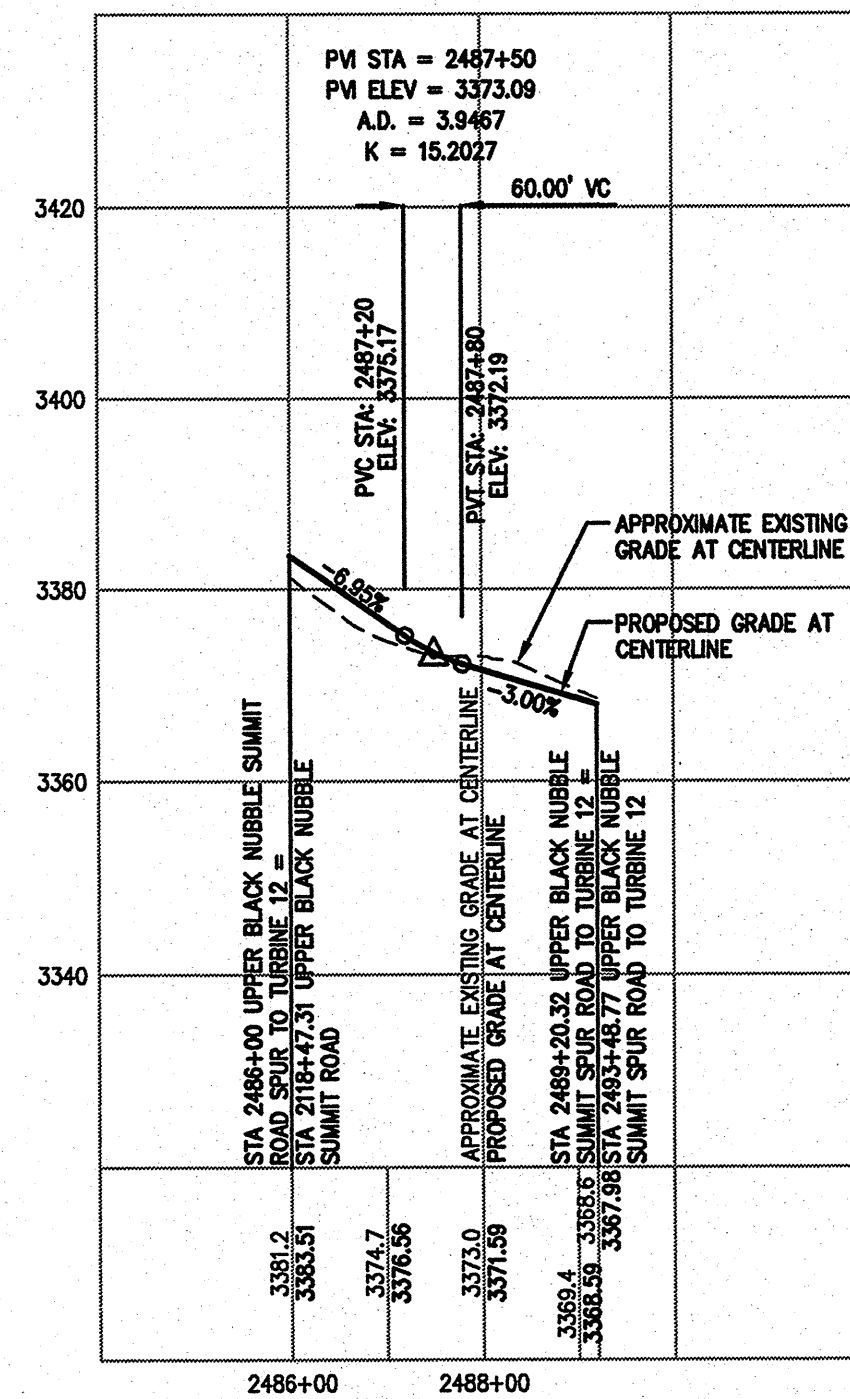


NOTE:
FOR PLAN VIEW, SEE SHEETS C-BN5, C-BN6 AND C-BN7

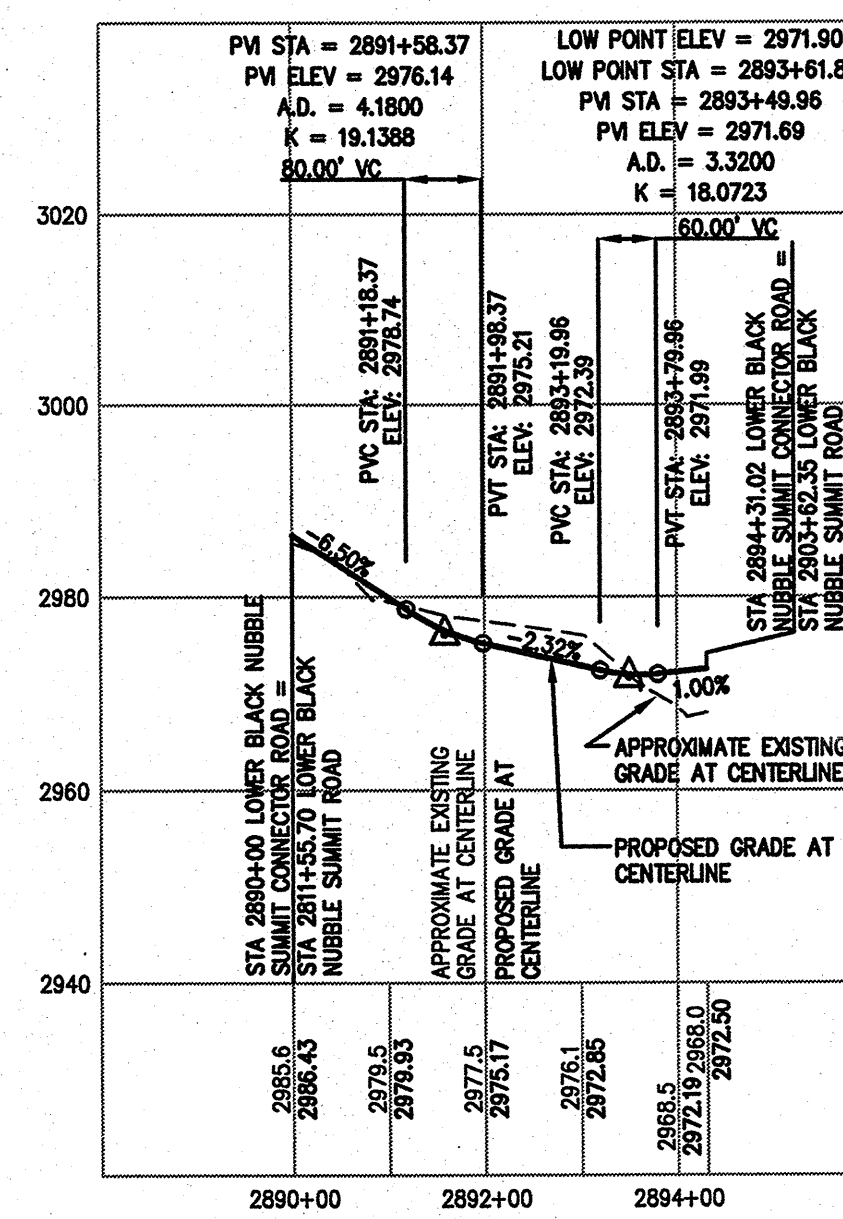
NOTE:
SEE BLACK NUBBLE GRADING AND EROSION CONTROL PLAN SHEETS C-BN8, C-BN16, C-BN21, C-BN22 AND C-BN23 FOR CULVERT LOCATIONS AND SIZING



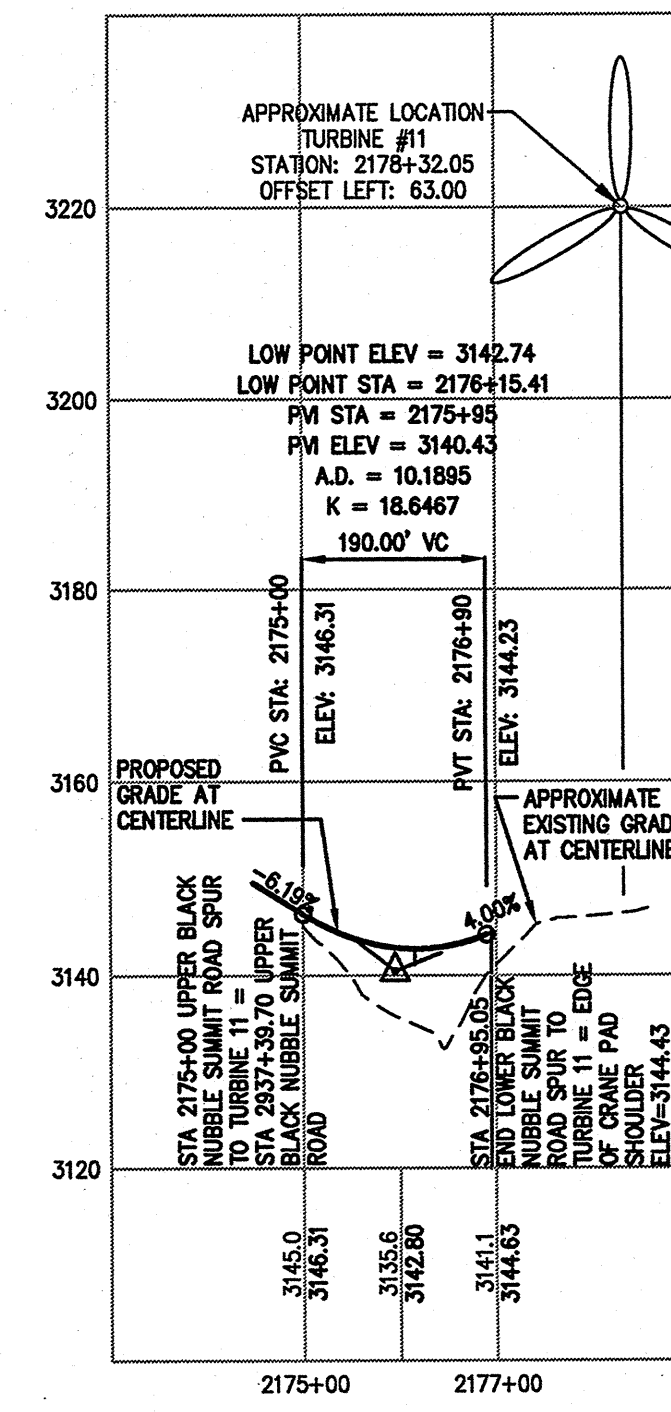
UPPER BLACK NUBBLE SUMMIT ROAD SPUR TO TURBINE 19 STA 2490+00 TO STA 2494+46.28
SCALE: HORZ 1"=200'
VERT 1"=20'



UPPER BLACK NUBBLE SUMMIT ROAD SPUR TO TURBINE 19 STA 2486+00 TO STA 2489+20.31
SCALE: HORZ 1"=200'
VERT 1"=20'



LOWER BLACK NUBBLE SUMMIT CONNECTOR ROAD STA 2890+00 TO STA 2894+31.02
SCALE: HORZ 1"=200'
VERT 1"=20'



LOWER BLACK NUBBLE SUMMIT ROAD SPUR TO TURBINE 20 STA 2175+00 TO STA 2176+95.05
SCALE: HORZ 1"=200'
VERT 1"=20'

BLACK NUBBLE PROFILES

NO.	DATE	REVISIONS
3	06.22.07	REVISED FOR BLACK NUBBLE ONLY PROJECT
2	12.06.06	DESIGN SUBMISSION FOR CLIENT REVIEW
1	10.31.06	DRAFT SUBMISSION FOR CLIENT REVIEW - PARTIAL SET

**BLACK NUBBLE WIND FARM PROJECT
MAINE MOUNTAIN POWER LLC**

MORTENSON
700 Meadow Lane North
Minneapolis, MN 55440

Deluca-Hoffman Associates, Inc.
778 MAIN STREET, SUITE 8
SOUTH PORTLAND, ME 04106
207.775.1121
www.delucahoffman.com