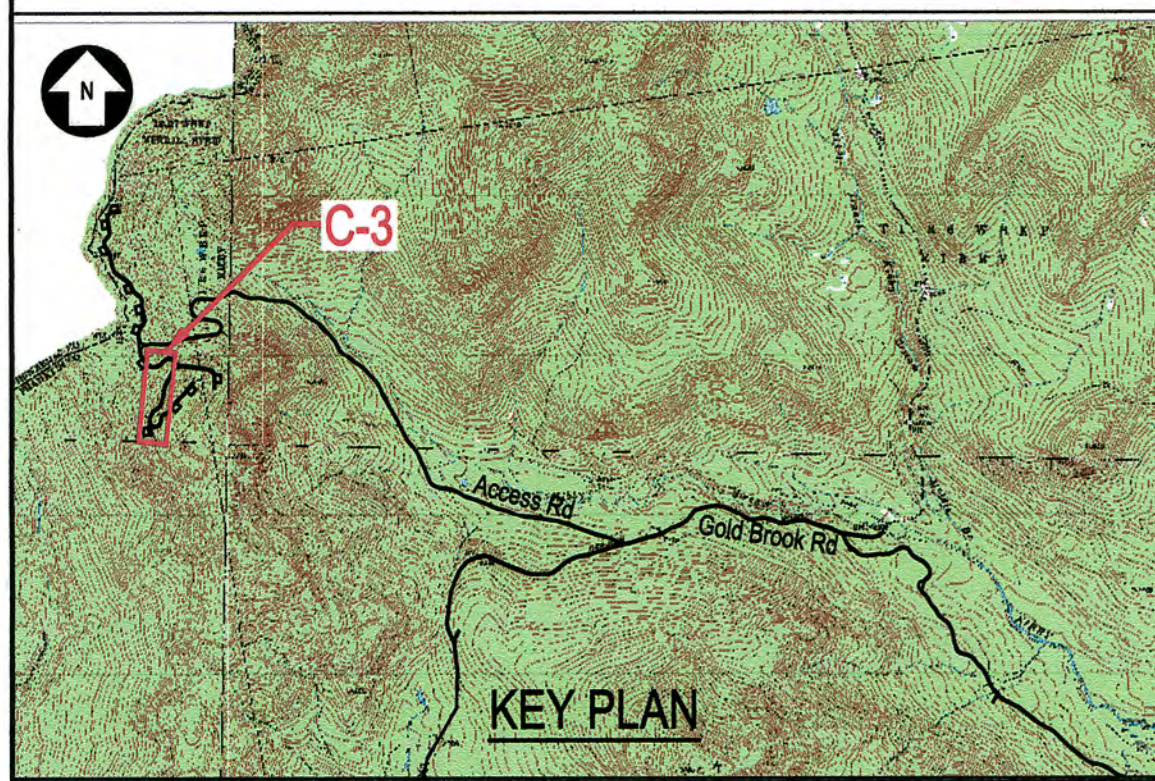
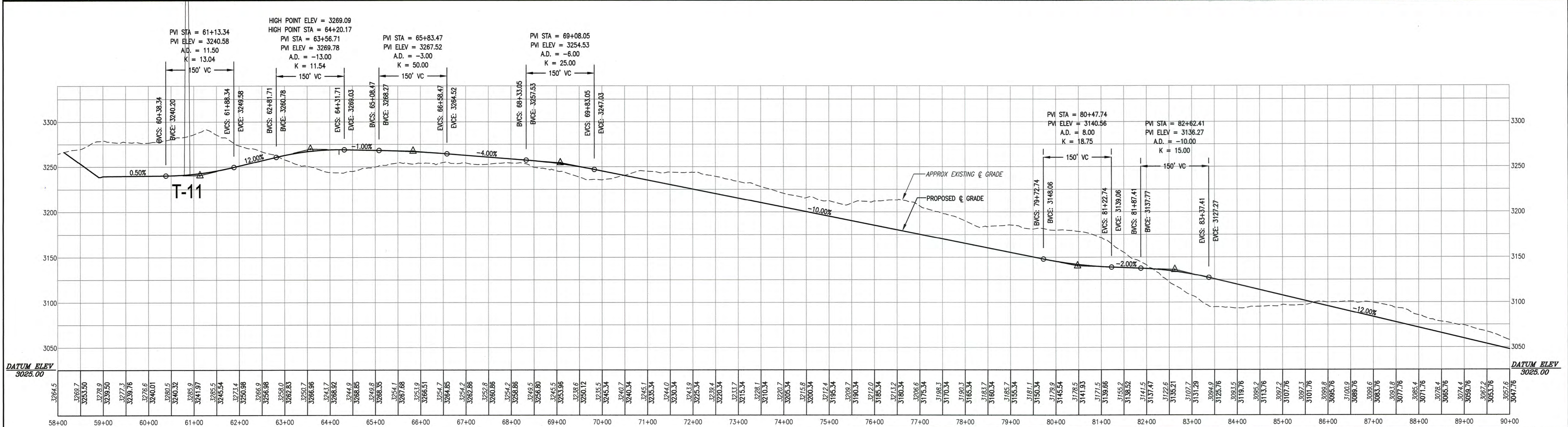


PLAN VIEW
SCALE: 1"=100'



KEY PLAN

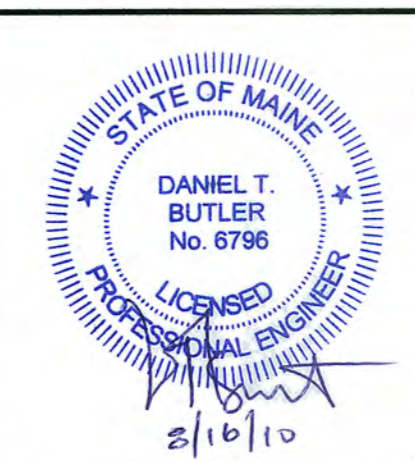


PROFILE: STA 58+00 TO 90+00
SCALE: HORIZ: 1"=100'
VERT: 1"=50'

- NOTES:**
- SEE DRAWING G-2 FOR PROJECT NOTES, LEGEND, AND ABBREVIATIONS.
 - SEE DRAWING G-3 FOR OVERALL PROJECT MAP AND OVERALL PROJECT DRAWING INDEX.

NOT FOR CONSTRUCTION

NO.	REVISION	DATE	BY	CK	P.E. STAMPED	P.E. No.
E	REVISED RIDGE ROADWAY	8/10/10	KAV	DTB	DTB	6796
D	REVISED DRAINAGE STRUCTURES	5/21/10	KAV	DTB	DTB	6796
C	REVISED ROAD, COLLECTOR LAYOUT & T-11 LOCATION	5/3/10	KAV	DTB	DTB	6796
B	ADDED CLASS L SOILS MAPPING	1/20/10	KAV	DTB	DTB	6796
A	ISSUED FOR PERMITTING	11/18/09	KAV	DTB	DTB	6796



CLIENT APPROVAL	
APPROVED BY	TRC/KAV DESIGNED
COMPANY	TRC/KAV DRAWN
DATE	TRC/DTB CHECKED
	APPROVED
	REVIEWED

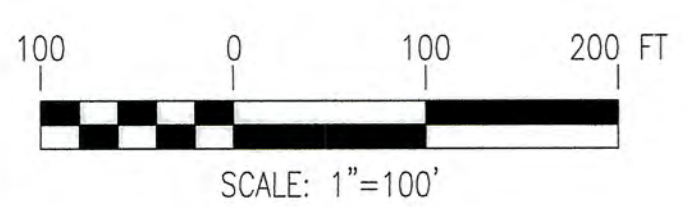
PLAN & PROFILE: RIDGE ROAD
STA 58+00 TO 90+00
TRANSCANADA
KIBBY EXPANSION WIND POWER PROJECT
CHAIN OF PONDS & KIBBY TOWNSHIPS MAINE

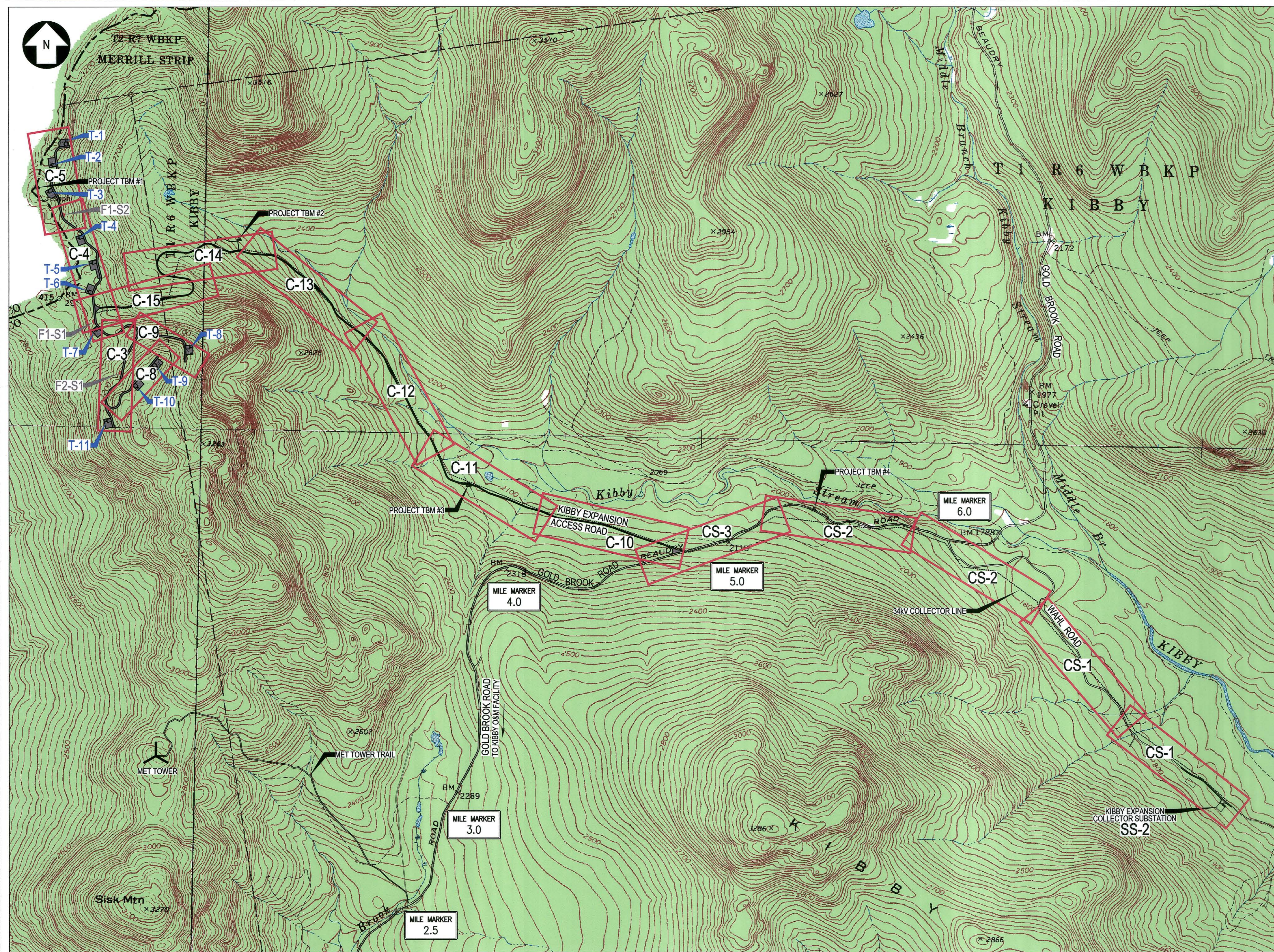
SCALE: AS NOTED

249 WESTERN AVENUE
AUGUSTA, ME 04330
PROJECT NO: 170019
DATE: 10-8-09

C-3

REV. E





DRAWING INDEX

- G-1 TITLE SHEET
- G-2 PROJECT NOTES, LEGEND & ABBREVIATIONS
- G-3 OVERALL LOCATION MAP & DRAWING INDEX

- C-1 DELETED FROM PROJECT
- C-2 DELETED FROM PROJECT
- C-3 PLAN & PROFILE: RIDGE ROAD STA 58+00 TO 90+00
- C-4 PLAN & PROFILE: RIDGE ROAD STA 90+00 TO 120+00
- C-5 PLAN & PROFILE: RIDGE ROAD STA 120+00 TO 138+40
- C-6 DELETED FROM PROJECT
- C-7 DELETED FROM PROJECT
- C-8 PLAN & PROFILE: T-9/10 SPUR ROAD STA 0+00 TO 17+99
- C-9 PLAN & PROFILE: T-8 SPUR ROAD STA 0+00 TO 14+20

- C-10 PLAN & PROFILE: ACCESS ROAD STA 0+00 TO 30+00
- C-11 PLAN & PROFILE: ACCESS ROAD STA 30+00 TO 60+00
- C-12 PLAN & PROFILE: ACCESS ROAD STA 60+00 TO 90+00
- C-13 PLAN & PROFILE: ACCESS ROAD STA 90+00 TO 120+00
- C-14 PLAN & PROFILE: ACCESS ROAD STA 120+00 TO 150+00
- C-15 PLAN & PROFILE: ACCESS ROAD STA 150+00 TO 174+77

- C-16 CIVIL DETAILS I
- C-17 CIVIL DETAILS II
- C-18 CIVIL DETAILS III
- C-19 CIVIL DETAILS IV
- C-20 CIVIL DETAILS V

- C-21 EROSION CONTROL DETAILS I
- C-22 EROSION CONTROL DETAILS II

- SS-1 SYSTEM POWER ONE LINE
- SS-2 SUBSTATION SITE PLAN
- SS-3 SUBSTATION CROSS SECTION & DETAILS
- SS-4 WAHL ROAD PROFILE

- CS-1 34KV COLLECTION SYSTEM PLAN I
- CS-2 34KV COLLECTION SYSTEM PLAN II
- CS-3 34KV COLLECTION SYSTEM PLAN III
- CS-4 34KV STRUCTURE DETAILS I
- CS-5 34KV STRUCTURE DETAILS II
- CS-6 34KV STRUCTURE DETAILS III

- SW-1 PRE-DEVELOPMENT WATERSHED PLANS - KIBBY STREAM WATERSHED
- SW-2 PRE-DEVELOPMENT WATERSHED PLANS - GOLD BROOK WATERSHED
- SW-3 PRE-DEVELOPMENT WATERSHED PLANS - COLLECTOR SUBSTATION WATERSHED
- SW-4 POST-DEVELOPMENT WATERSHED PLANS - KIBBY STREAM WATERSHED
- SW-5 CURVE NUMBER EVALUATION & PHOSPHORUS PLAN - GOLD BROOK WATERSHED
- SW-6 POST-DEVELOPMENT WATERSHED PLANS - COLLECTOR SUBSTATION WATERSHED
- SW-7 CURVE NUMBER EVALUATION & PHOSPHORUS PLAN - CHAIN OF PONDS WATERSHED

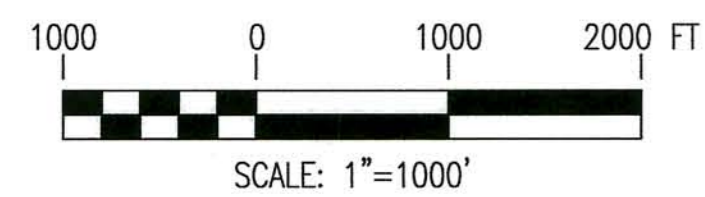
PROJECT BENCHMARKS

- #1 AERIAL CONTROL SPIKE LOCATED WITHIN US/CANADIAN BORDER CLEARCUT ELEVATION=3160.35 (NAVD88)
- #2 AERIAL CONTROL SPIKE LOCATED ALONG EXISTING SKIDDER TRAIL ELEVATION=2439.97 (NAVD88)
- #3 AERIAL CONTROL SPIKE LOCATED ALONG EXISTING ACCESS ROAD ELEVATION=2128.84 (NAVD88)
- #4 AERIAL CONTROL SPIKE LOCATED ALONG GOLD BROOK ROAD, MILE 5.5± ELEVATION=2014.58 (NAVD88)

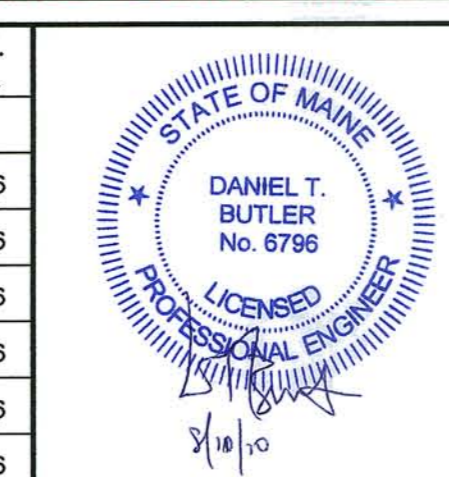
OVERALL LOCATION MAP
SCALE: 1"=1000'

NOTES:
1. SEE DRAWING G-2 FOR PROJECT NOTES, LEGEND, AND ABBREVIATIONS.

NOT FOR CONSTRUCTION



NO.	REVISION	DATE	BY	CK	P.E. STAMPED BY	P.E. No.
F	REVISED LAYOUT ON RIDGE & INDEX	8/10/10	KAV	DTB	DTB	6796
E	RE-ISSUED FOR PERMITTING, NO CHANGE	5/21/10	KAV	DTB	DTB	6796
D	REVISED LAYOUT ON RIDGE & INDEX	5/3/10	KAV	DTB	DTB	6796
C	ADDED SWITCH LOCATIONS TO MAP	3/11/10	KAV	DTB	DTB	6796
B	REVISED TITLE FOR SW-5 AND SW-7	12/20/09	PGT	DTB	DTB	6796
A	ISSUED FOR PERMITTING	11/18/09	KAV	DTB	DTB	6796



CLIENT APPROVAL	TRC/KAV DESIGNED
APPROVED BY	TRC/KAV DRAWN
COMPANY	TRC/DTB CHECKED
DATE	APPROVED
	REVIEWED

OVERALL LOCATION MAP & DRAWING INDEX

TRANSCANADA

KIBBY EXPANSION WIND POWER PROJECT

CHAIN OF PONDS & KIBBY TOWNSHIPS

MAINE

TRC 249 WESTERN AVENUE
AUGUSTA, ME 04330
PROJECT NO: 170019
SCALE: AS NOTED DATE: 10-8-09

G-3

REV. F