



MAINE FOREST SERVICE SPRUCE BUDWORM PHEROMONE TRAP RETRIEVAL INSTRUCTIONS

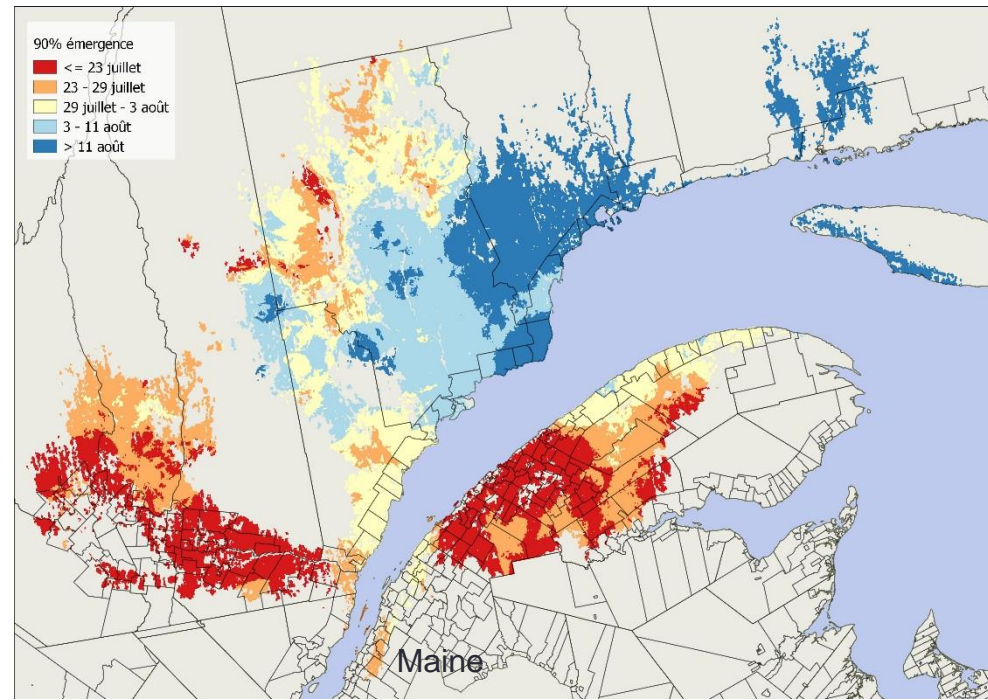
For Maine Forest Service
Personnel and Cooperators
using the Multi-Pher II and a
3-trap cluster

(budworm tracker volunteers,
see www.budwormtracker.ca)

Trap Retrieval

-- Timing

- Collect the traps after mid-August
 - ensures sample of any late-migrations from colder regions.
- The traps can be left out until early October
 - Hemlock looper moths will be sampled
 - May allow for concurrent collection of L2 samples.
 - Note: Please follow CFRU instructions for collection of L2 samples.
 - Due to a delay between collection and processing, L2 should not be collected during warm periods unless they can be brought to cool storage within the same day.



Predicted Dates for 90% Emergence of Adult SBW
Indicates Possible Migration Through Mid-August

Hemlock Looper



Branch Sampling for
L2 Survey



Trap Retrieval -- Timing

Attempt to make moth collections on a dry day so that the sample will not rot before it is checked. If this is not practical, put a paper towel in with the sample.



Less than ideal weather conditions for collecting moth samples.



Damp sample packaged with paper towel to absorb moisture.

Mark Site

- Collect and record accurate GPS coordinates from location of first trap (WGS 84 or NAD 83) if not already done.
- Refresh any flagging needed to easily re-locate site/trees next year for those sites that are likely to be re-surveyed (not slated for harvest, still suitable).
 - Flag at road
 - Flag path to trees
 - Flag trees



Dispose of compromised samples

Discard samples from significantly damaged traps (those on the ground, with soaked samples, etc). Note on bag and datasheet how many traps were collected, and condition of traps not collected (missing, damaged, on ground, etc).




Combine Samples from Site

- Empty **entire contents** of remaining traps into provided sealable plastic bag, or similar container.
 - Combine samples from all intact traps in one bag.
 - Please do not remove insects from the sample.



Please Keep all Insects in Sample



Spruce budworm appearance can be variable.

Samples in which moths have been removed are unusable.

“By-catch” is used to monitor other species.

Record Appropriate Data

- Record pickup information on bag label and datasheet
- Record data on datasheet or mobile device

Co.: Maine Forest Service
 Township Oqiton
 Trap ID: MFS-OQI bear
 Date 9/1/2017 #traps: 2

Sample Bag Label.
 Additional information requested
 with sample (see datasheet below).

Sample Datasheet

Spruce Budworm Pheromone Trapping Sheet 2017 NAME J. Harriman

Company <u>MFS</u>		<i>Use Decimal Degrees</i>		<u>y/n</u>						for MFS
Site ID	Township	Latitude	Longitude	New Loc?	Date set	Date retrieved	# traps retrieved	Comments	#SBW/#loop	
<u>MFS-OQI</u>	<u>Oqiton Twp</u>	<u>45.152913</u>	<u>-68.071291</u>	<u>N</u>	<u>6/14/17</u>	<u>8/17/17</u>	<u>2</u>	<u>bear</u>		



Bag labels and datasheet provided earlier in the year. Additional available by request or for download (Scan code at left for MFS Spruce Budworm Page).



Properly Dispose of Pesticide Strips

<http://www.herconenviro.com/insecticidal-strips.php>



HERCON®
VAPORTAPE™ II
 INSECTICIDAL STRIPS
 FOR USE AS TOXICANT IN INSECT TRAPS

ACTIVE INGREDIENTS:
 2, 2-Dichlorovinyl dimethyl phosphate.....10.00%
 Related compounds.....0.75%
OTHER INGREDIENTS.....89.25%
TOTAL.....100.00%

CONTENTS: 50 strips (1" X 4") or 500 strips (1" X 1/2") or 100 strips (1" X 1/2")
MINIMUM NET WEIGHT: 0.21 oz (5.9g)/1-in x 4-in strip or 13.1254 oz(368.75 gm)/500 1-in X 1/2" strips or 2.625 oz (73.75 gm)/100 1-in X 1/2" strips

KEEP OUT OF REACH OF CHILDREN

CAUTION

READ DIRECTIONS AND PRECAUTIONARY STATEMENTS BEFORE USE

PRECAUTIONARY STATEMENTS

Hazards to Humans and Domestic Animals

CAUTION: Harmful if swallowed. After prolonged storage, a small amount of liquid may be present. Wash hands thoroughly with soap and water after handling.

HERCON® PRODUCT NO. 100311
VAPORTAPE™ II
 INSECTICIDAL STRIPS FOR USE AS TOXICANT IN
INSECT TRAPS

Environmental Hazards

This product is toxic to fish, birds and aquatic invertebrates. Do not apply directly to water, to areas where surface water is present or to intertidal areas below the mean high water mark. Do not contaminate water when disposing of equipment wash-waters or rinsate.

DIRECTIONS FOR USE

It is a violation of Federal Law to use this product in a manner inconsistent with its labeling.

Do not open protective pouch until ready to use. HERCON VAPORTAPE II is to be used only as the toxicant strip for insect traps, including those for the boll weevil, gypsy moth, spruce budworm, forest tent caterpillar, Mediterranean fruit fly, oriental fruit fly, codling moth, southwestern corn borer, and sweet potato weevil. Do not use toxicant strip for any other purpose. Read Directions for Use accompanying the trap before opening the VAPORTAPE II package. Replace strips after 12 weeks or when effectiveness diminishes.

STORAGE AND DISPOSAL

Storage: Store in a cool dry place.
Pesticide Disposal: Do not reuse empty pouch or strip. Wrap strip in paper and discard in trash.
Container Disposal: Do not reuse empty pouch. Discard in trash.

EPA Reg. No. 8730-50
 EPA Est. No. 8730 PA 01

Made in USA by
 HERCON ENVIRONMENTAL
 Aberdeen Road Company Emigsville, PA 17318-0435 rev 052809

WARRANTY AND LIMITATION OF DAMAGES

Hercon Environmental warrants that this product conforms to the chemical description on the label and is reasonably fit for the purposes stated on the label when used in accordance with the Directions for Use under normal conditions of use to the extent allowed by state law. Hercon neither makes, nor authorizes any agent or representative to make any other warranty of fitness or of merchantability, guarantee or representation, expressed or implied concerning this material except as stated above. This warranty does not extend to the use of this product contrary to the label instructions, or under abnormal use conditions, or under conditions not reasonably foreseeable to Hercon Environmental. If this product is defective, Buyer's exclusive remedy shall be the replacement of the product, or if replacement is impracticable as determined by Hercon, refund of the purchase price. To the extent allowable by law, Hercon's maximum liability for breach of this warranty shall not exceed the purchase price of this product. In no case will Hercon be liable for incidental, consequential or special damages resulting from handling, storage, use, misuse or abuse of this product.

HERCON® and VAPORTAPE™ are trademarks of Aberdeen Road Company

effectiveness diminishes.

STORAGE AND DISPOSAL

Storage: Store in a cool dry place.

Pesticide Disposal: Do not reuse empty pouch or strip. Wrap strip in paper and discard in trash.

Container Disposal: Do not reuse empty pouch. Discard in trash.

FOR USE IN INSECT TRAPS

Have the product container or label with you when calling a poison control center or doctor or going for treatment.
 NOTE TO PHYSICIANS: Atropine sulfate is the antidote of choice. You may contact the National Pesticide Telecommunication Network at 1-800-858-7370 for emergency medical treatment information. Hours of operation are seven days a week, 9:30 am to 4:30 pm PST.

“Wrap strip in paper and discard in trash.”



Store Samples Until Shipment

Store samples in a cool place until they are turned in.



Turn in Samples for Processing



Send, deliver or arrange for pick up of samples/extra supplies*:

Allison Kanoti

allison.m.kanoti@maine.gov

(207) 827-1813

Maine Forest Service

PO Box 415 (87 Airport Road)

Old Town, ME 04468

NOTE: If mailing samples, please put in a crush-proof package. Machine cancellation will destroy poorly-packed moths and prevent accurate counts!

*Contact us before turning in moth samples if you prefer to return your traps for cleaning.

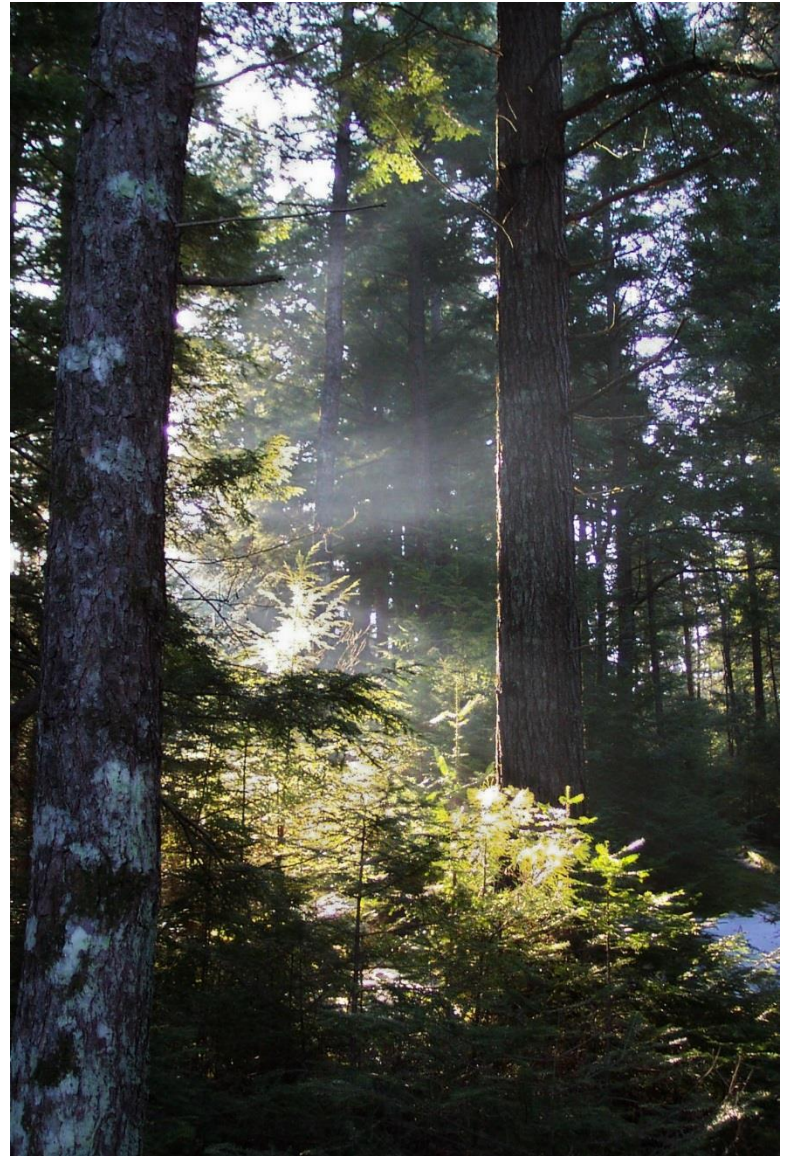
Clean and Inventory Supplies

Clean*/count traps and parts and store for winter. Report needs for additional supplies
(A survey will also be sent out next spring)



* Do not use the same area/tools used for meal clean-up. (We use plastic totes — one for warm water soap or bleach wash, one for rinsing — and dedicated wash-rags)

Thank
You!



Questions?

Contact Allison Kanoti
allison.m.kanoti@maine.gov or
(207) 827-1813



Additional instructions linked to
the MFS website ...

[www.maine.gov/dacf/mfs/forest_health/
insects/spruce_budworm_2014.htm](http://www.maine.gov/dacf/mfs/forest_health/insects/spruce_budworm_2014.htm)



...and

www.sprucebudwormmaine.org.

