

ADDENDUM

Date March 20, 2024

To Prospective Bidders

Re Addendum No. 1 to the Construction Documents for:

York Middle School
Window Replacement Phase 2
York, Maine
Project No. 22328

This Addendum forms a part of the Contract Documents and modifies the original Construction Documents dated February 29, 2024. Acknowledge receipt of this Addendum in the space provided in the Proposal Form.

This Addendum consists of two pages and drawings as listed on page 2.

Harriman



Lisa D. Sawin, AIA, LEED AP
Principal

CHANGES TO SPECIFICATIONS

1. SECTION 2-A -NOTICE TO BUILDING CONTRACTORS (PUBLIC SCHOOL PROJECTS)
 - a. Paragraph 1, delete and replace with the following:

“Proposals will be opened and read aloud at 2:00 pm on Tuesday **March 26, 2024**, at the office of the Superintendent of Schools. Bids received after 2:00 pm will not be considered and will be returned unopened. Proposals may also be emailed to Chris Rynne, by **12:00 pm** on Tuesday March 26, 2024, at CRynne@YorkSchools.org.”

2. SECTION 084523 – FIBERGLASS-SANDWICH-PANEL ASSEMBLIES
 - a. Article 2.1, G., 1. delete and replace with the following:
 - “1. Thermal Transmittance (U-Factor): Fixed glazing and framing areas shall have U-factor of not more than 0.14 Btu/sq. ft. x h x deg F as determined according to NFRC 100.”

 - b. Article 2.3, D. delete and replace with the following:

“D. Exterior Face Sheet:

 1. Thickness: 0.070 inch.
 2. Color: White. Thickness shall not vary more than 10 percent.
 3. Protective Weathering Surface: Integral, embedded-glass erosion barrier. Plastic film overlays are not acceptable.
 4. Erosion Protection: Integral, embedded-glass erosion barrier.”

 - c. Article 2.4, A., 1. delete and replace with the following:

“1. I-beam Thermal break: Minimum 1”, thermoset fiberglass composite. Poured and de-bridged thermal break is not acceptable.”

 - d. Article 2.6, A. delete and replace with the following:

“A. Manufacturer’s factory applied finish, which meets the performance requirements of AAMA 2604.”

3. SECTION 085200 – FIBERGLASS REPLACEMENT WINDOWS
 - a. Article 2.1, A., 2. delete and replace with the following:
 - “2. Factory-assembled Impervia fiberglass units and Reserve aluminum-clad wood units as manufactured by Pella Corporation, Des Moines, Iowa. Units to be glazed with standard Advanced Low-e argon (Cardinal 272) glazing.”

DRAWINGS REVISED AND REISSUED WITH THIS ADDENDUM, DATED 03-20-2024:

1. DRAWING A20-1 – EXTERIOR ELEVATIONS
2. DRAWING A55-1 – WINDOW ELEVATIONS

Harriman

YORK MIDDLE SCHOOL WINDOW REPLACEMENT PHASE 2

YORK, MAINE

Harriman Project No. 23590



D1 LEFT SIDE ELEVATION
SCALE: 1/16" = 1'-0"



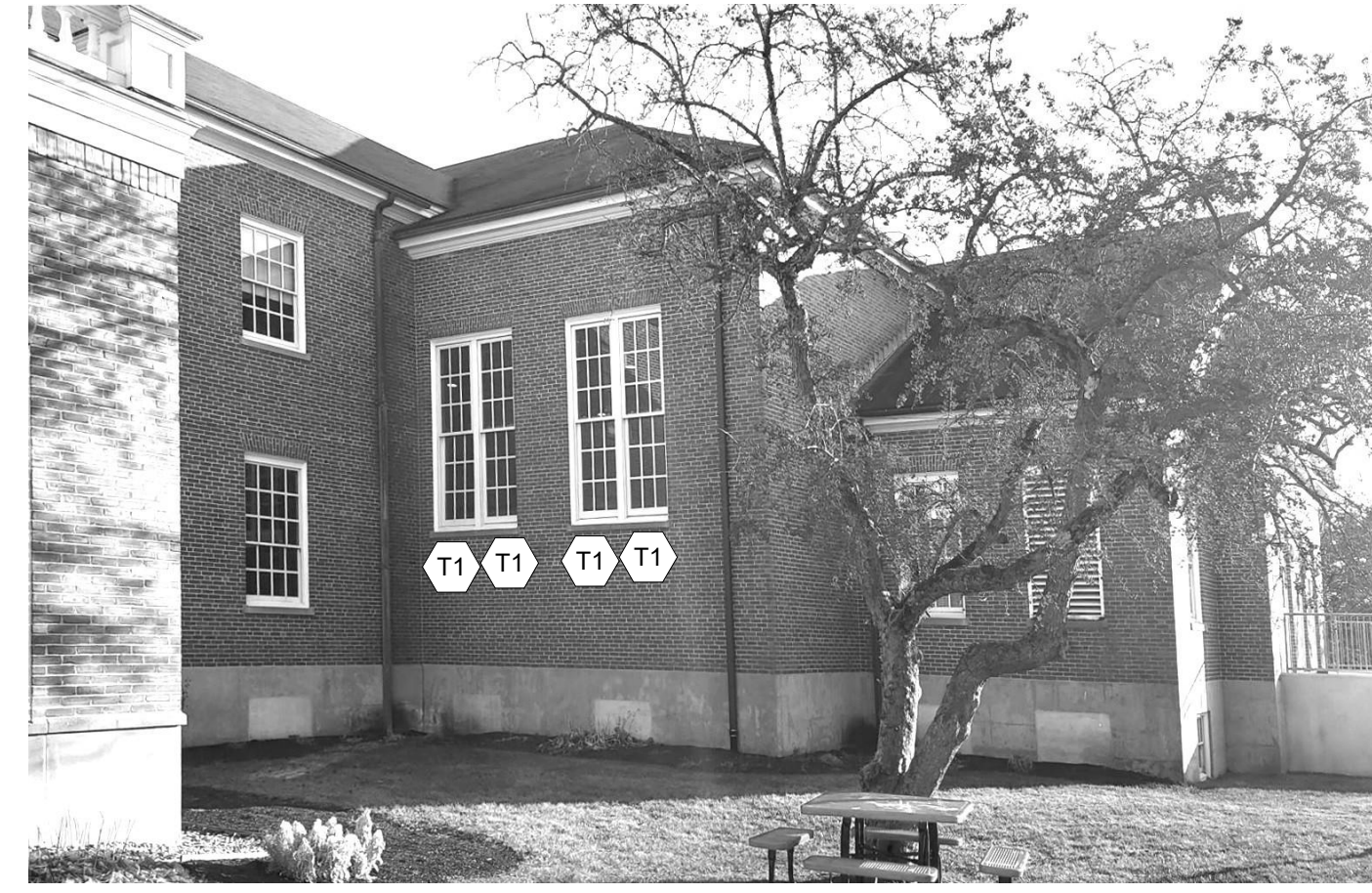
D3 FRONT ELEVATION
SCALE: 1/16" = 1'-0"



D5 FRONT SIDE ELEVATION
SCALE: 1/16" = 1'-0"



C1 FRONT ELEVATION
SCALE: 1/16" = 1'-0"



C3 FRONT SIDE ELEVATION
SCALE: 1/16" = 1'-0"



B1 RIGHT SIDE ELEVATION
SCALE: 1/16" = 1'-0"



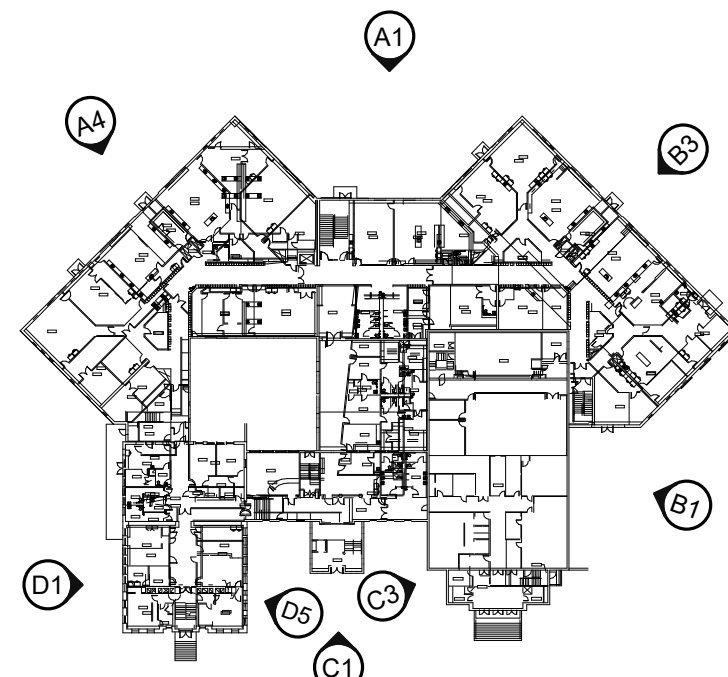
B3 RIGHT REAR ELEVATION
SCALE: 1/16" = 1'-0"



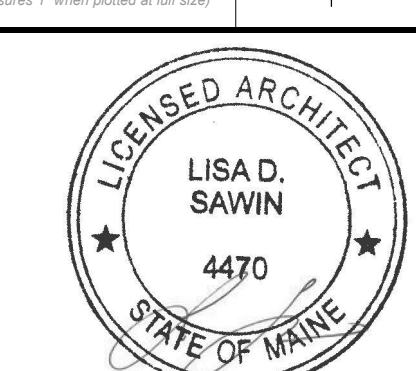
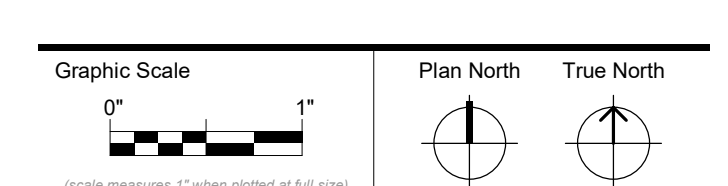
A1 REAR ELEVATION
SCALE: 1/16" = 1'-0"



A4 LEFT REAR ELEVATION
SCALE: 1/16" = 1'-0"



KEY PLAN



CONSTRUCTION DOCUMENTS

FEBRUARY 29, 2024

Revision Date	Revision Description
03-20-2024	ADDENDUM 1

Drawn by: DRE

EXTERIOR ELEVATIONS

