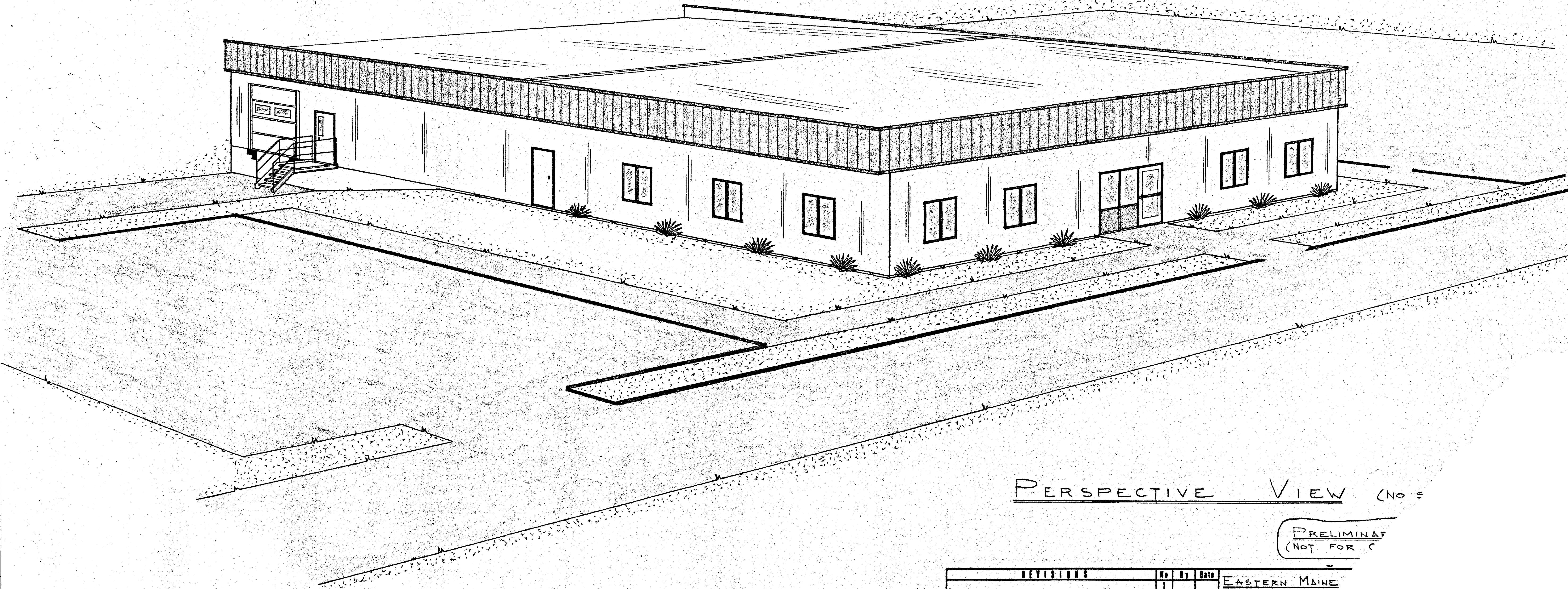


# EASTERN MAINE DEVELOPMENT Corp.

EAST MILLINOCKET, MAINE



PERSPECTIVE VIEW (NO. 3)

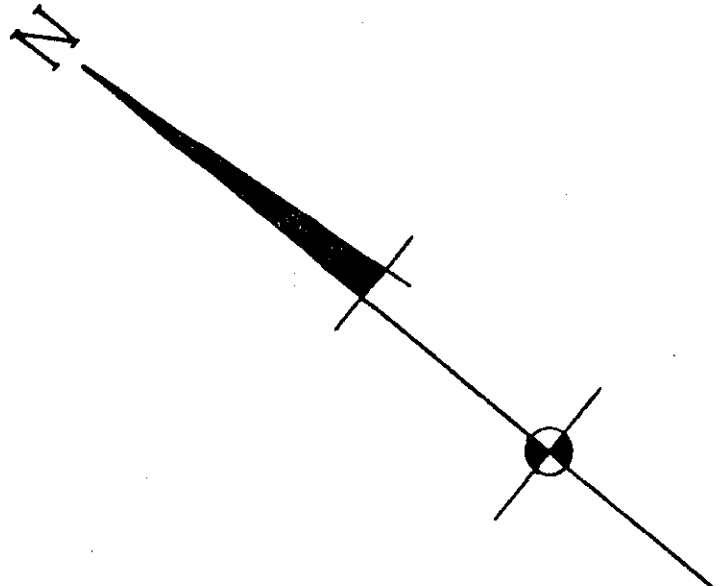
PRELIMINARY  
(NOT FOR C)

REVISIONS	No	By	Date
	1		
	2		
	3		
	4		
	5		

EASTERN MAINE  
DEVELOPMENT

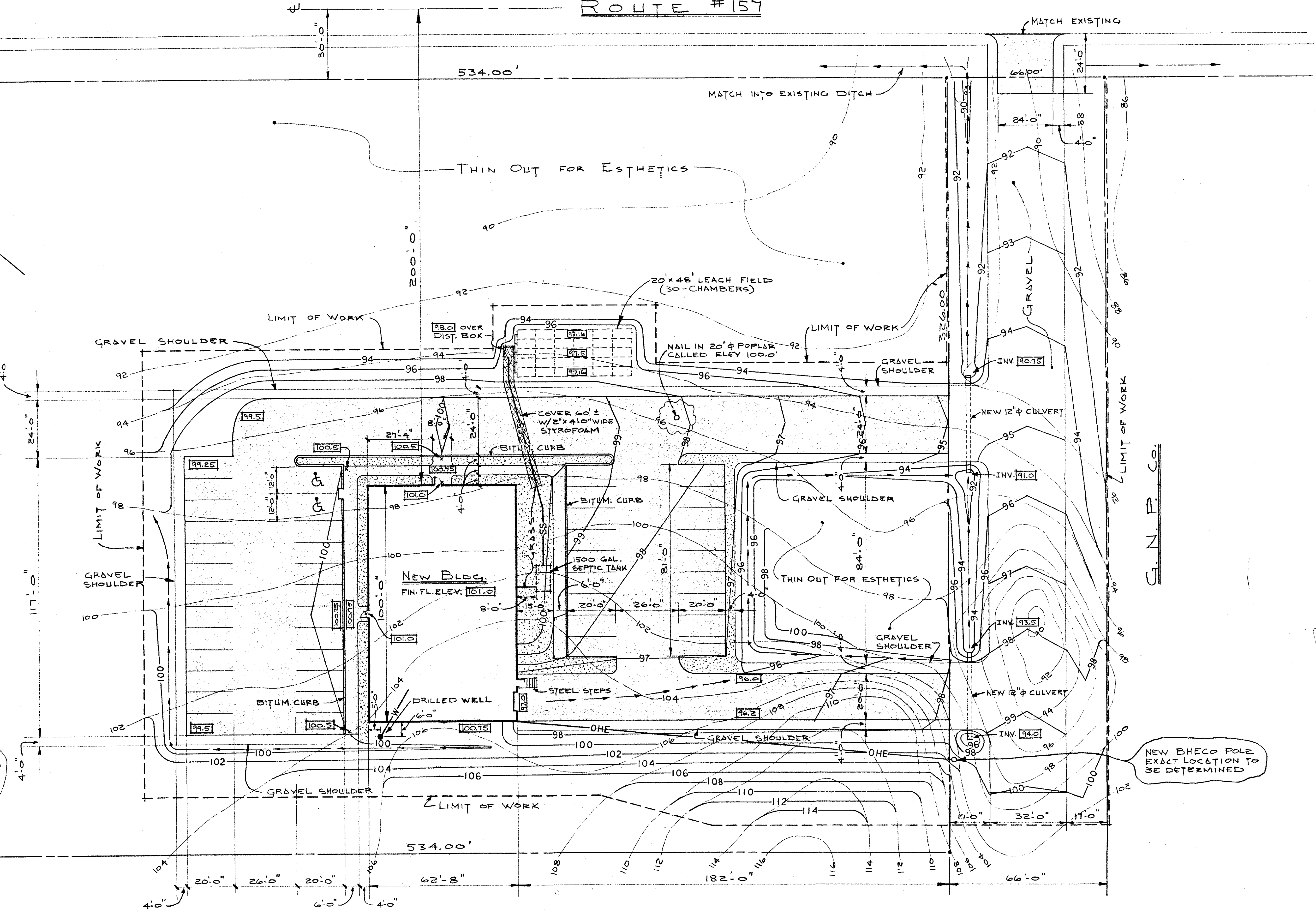
ROUTE #157

TO MILLINOCKET



- LEGEND:**
- 100 — EXISTING CONTOURS
  - 100 — NEW CONTOURS
  - 100.0 — NEW FINISH GRADE
  - PROPERTY LINE
  - LIMIT OF WORK
  - NEW GRASSED AREA
  - NEW PAVEMENT
  - OHE — OVERHEAD ELECTRICAL
  - SS — SANITARY SEWER (4" φ SCH. 40 PVC)
  - W — WATER LINE
- LOAM & SEED ALL NEW DITCHES AND BANKS.

- SEPTIC SYSTEM DATA:**
- CHAMBERS:** 30-PCS. - 4'x8'x13" - END FEED  
ACI No. 2822 OR EQUAL.  
TOP OF CHAMBER ELEV. - 96'-7"  
PIPE INV. ELEV. - 96'-0 1/2"
- DIST. BOX:** 16" x 36" x 17 1/2" DEEP  
ACI No. 2906 OR EQUAL  
TOP OF BOX ELEV. 96'-11"  
OUTLET INV. ELEV. 96'-1 1/2"  
INLET INV. ELEV. 96'-3"
- SEPTIC TANK:** 1500 GAL. REGULAR (6'-4" x 10'-6" x 5'-4" DEEP)  
ACI No. 2058 OR EQUAL  
OUTLET INV. ELEV. 97'-4"  
INLET INV. ELEV. 97'-7"  
TOP OF TANK ELEV. 98'-8"



KATAHDIN AREA DEVELOPMENT CORP.

**SITE PLAN** (SCALE: 1" = 20'-0")

REVISIONS			DATE	BY	NO.
NO.	BY	DATE			
1					
2					
3					
4					
5					

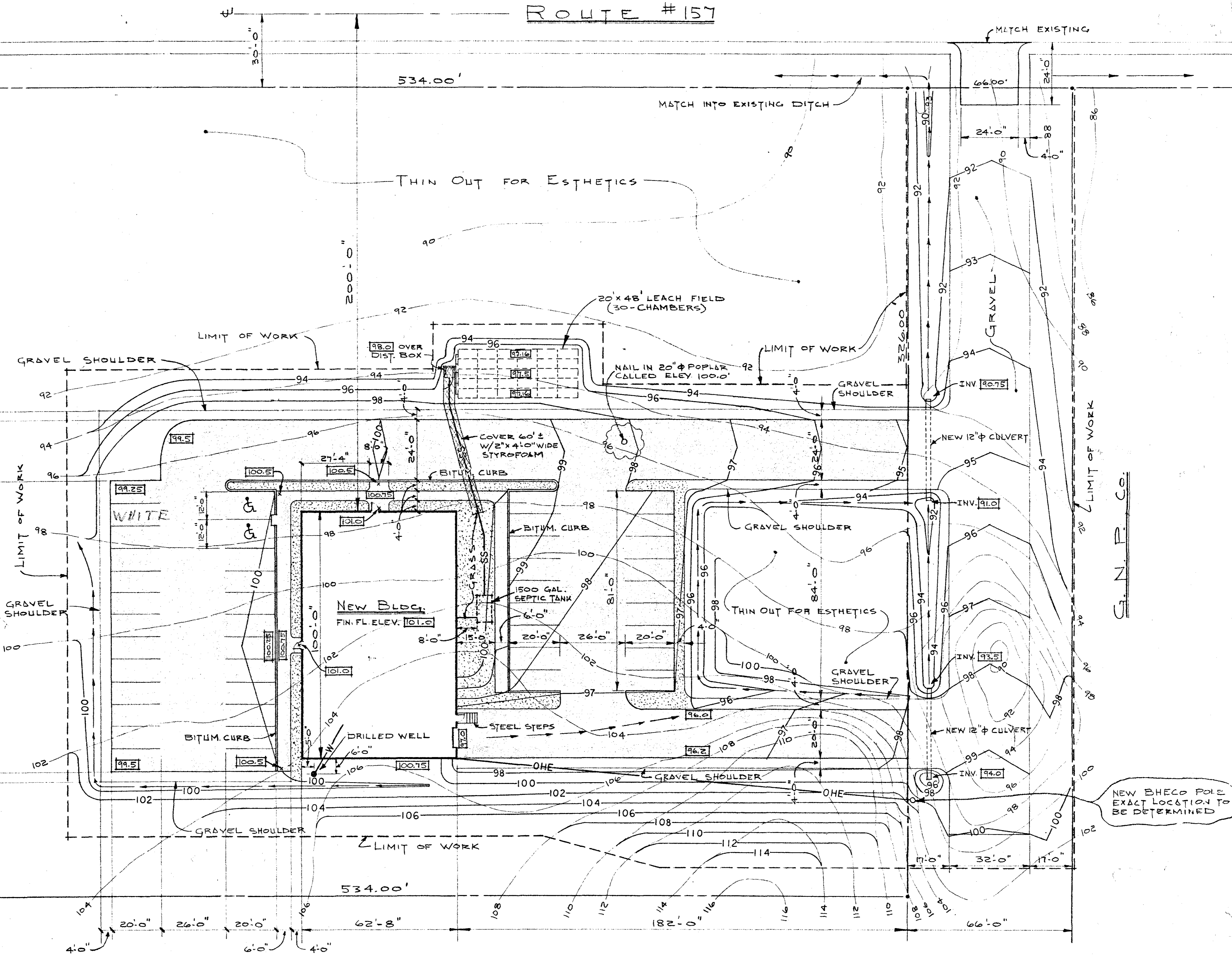
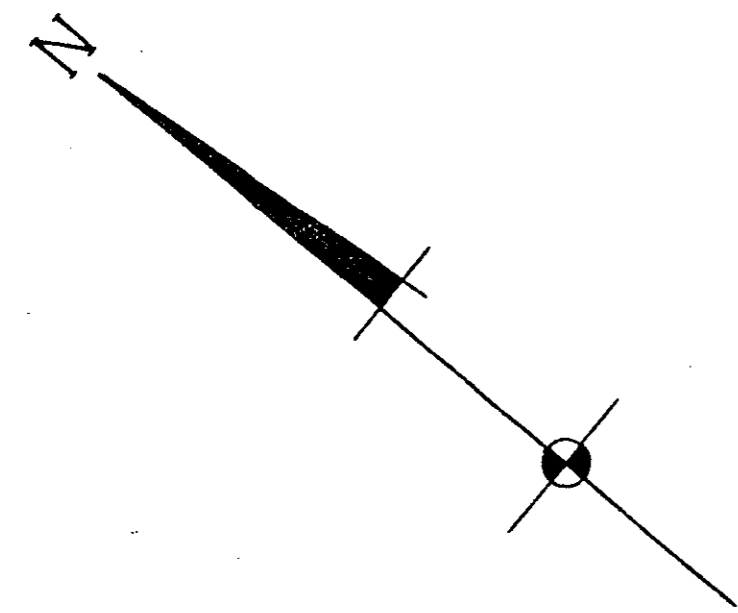
EASTERN MAINE DEVELOPMENT CORP.	DATE: 3/18/87
EAST MILLINOCKET, ME	DRAWN BY: S.M.G.
	SCALE: AS SHOWN

Design	Construct
HARDY	
603 MAIN ROAD NORTH HAMPTON, MAINE 04444	

Sheet No	SITE
Job No	243-87

ROUTE #157

TO MILLINOCKET



LEGEND:

- 100 — EXISTING CONTOURS
- 100 — NEW CONTOURS
- 100.0 — NEW FINISH GRADE
- — PROPERTY LINE
- - - - - LIMIT OF WORK
- Grass — NEW GRASSED AREA
- Pavement — NEW PAVEMENT
- OHE — OVERHEAD ELECTRICAL
- SS — SANITARY SEWER (4" φ SCH. 40 PVC)
- W — WATER LINE
- LOAM & SEED ALL NEW DITCHES AND BANKS.

SEPTIC SYSTEM DATA:

- CHAMBERS:** 30-PCS. - 4'x8'x13" - END FEED  
ACI No. 2822 OR EQUAL.  
TOP OF CHAMBER ELEV. - 96'-7"  
PIPE INV. ELEV. - 96'-0 1/2"
- DIST. BOX:** 16" x 36" x 17 1/2" DEEP  
ACI No. 2906 OR EQUAL  
TOP OF BOX ELEV. 96'-11"  
OUTLET INV. ELEV. 96'-1 1/2"  
INLET INV. ELEV. 96'-3"
- SEPTIC TANK:** 1500 GAL. REGULAR (6'-4" x 10'-6" x 5'-4" DEEP)  
ACI No. 2058 OR EQUAL  
OUTLET INV. ELEV. 97'-4"  
INLET INV. ELEV. 97'-7"  
TOP OF TANK ELEV. 98'-8"

NEW BHECO POLE  
EXACT LOCATION TO  
BE DETERMINED

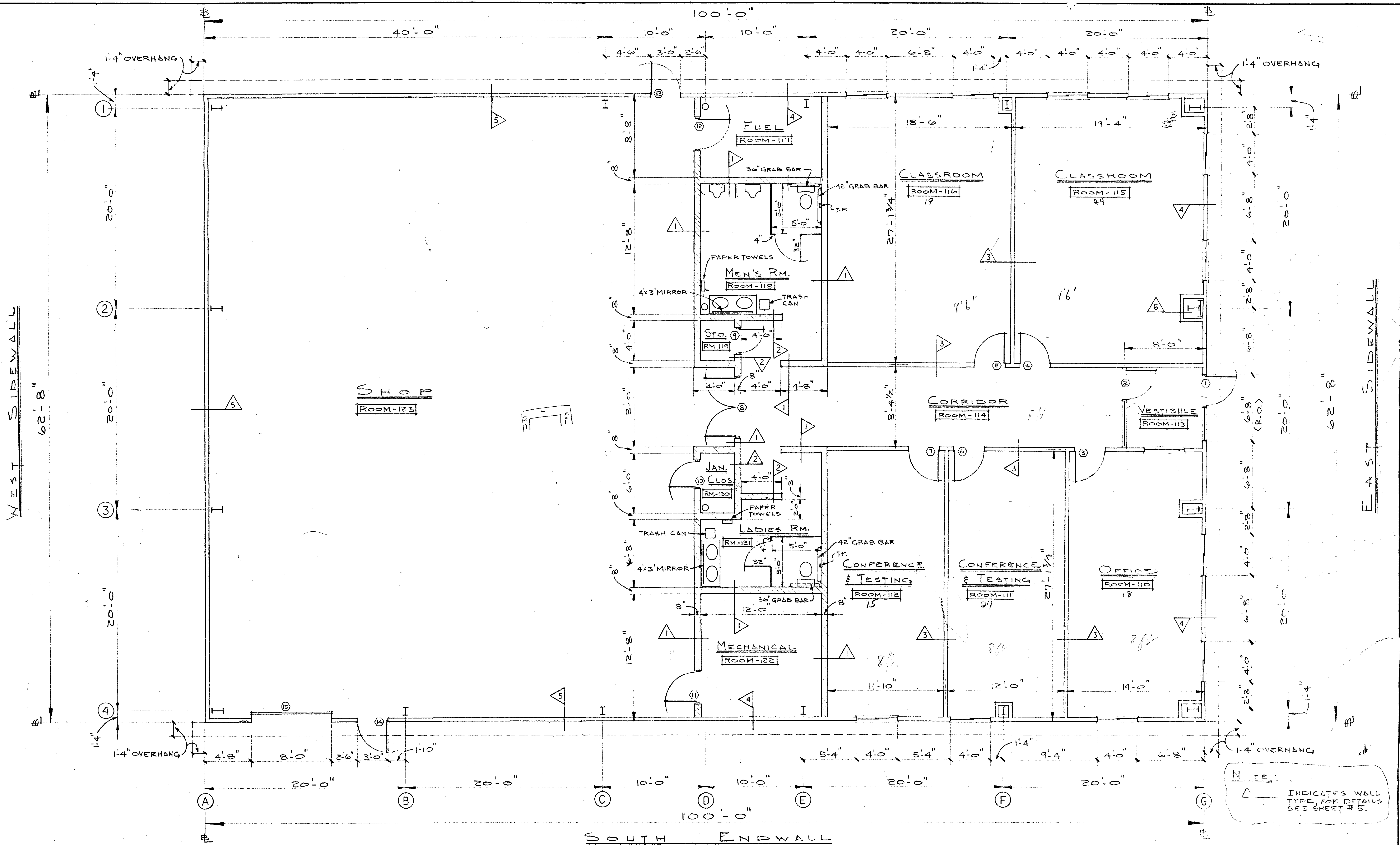
KATAHDIN AREA DEVELOPMENT CORP.

SITE PLAN (SCALE: 1" = 20'-0")

REVISIONS	No	By	Date
	1		
	2		
	3		
	4		
	5		

EASTERN MAINE  
DEVELOPERS  
EAST MILLINO





N - F. INDICATES WALL TYPE, FOR DETAILS SEE SHEET #5.

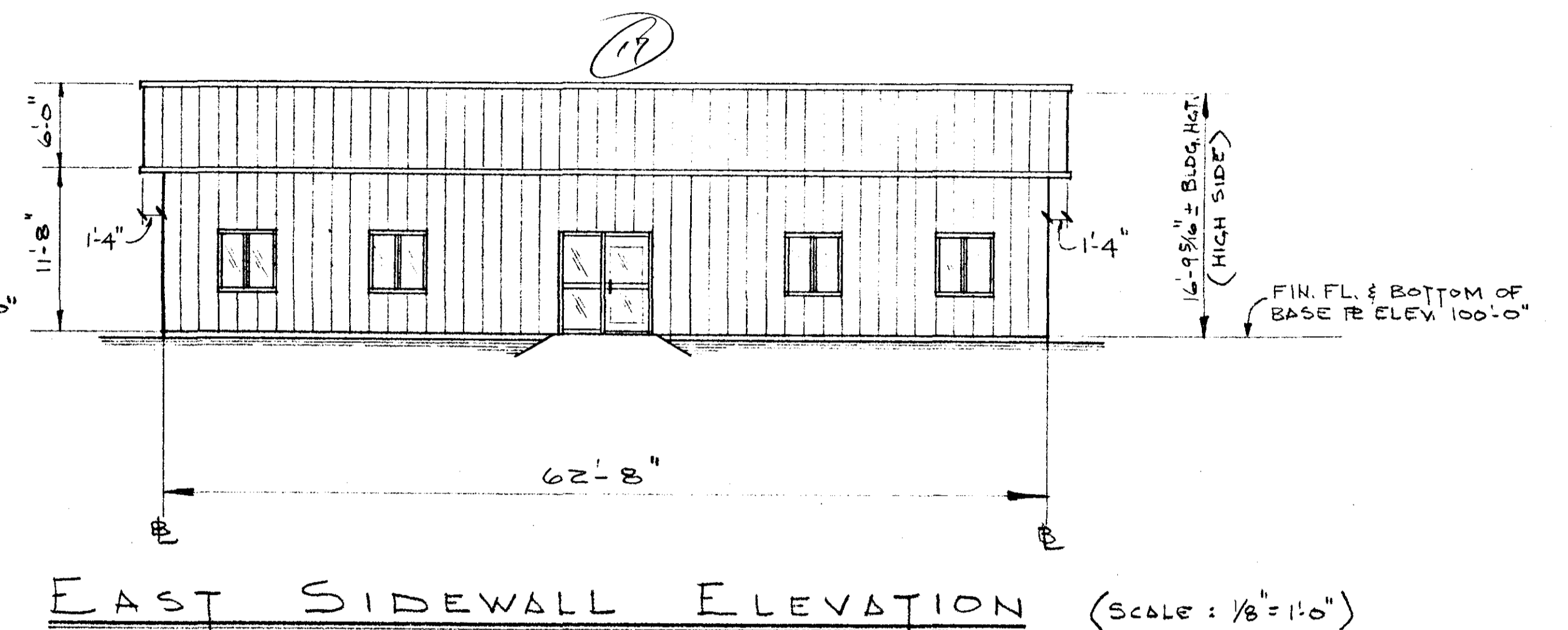
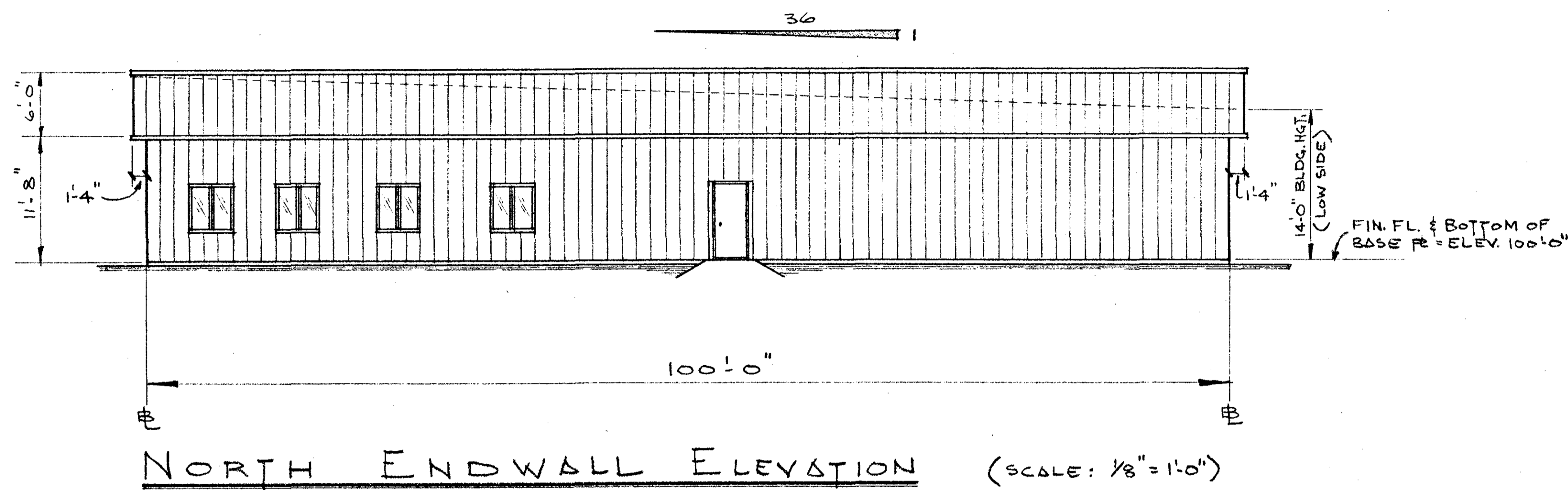
SOUTH ENDWALL

FLOOR PLAN (SCALE: 1/4"=1'-0")

78 4x8 SOUND BOARD  
140 1/2 SHEET ROCK

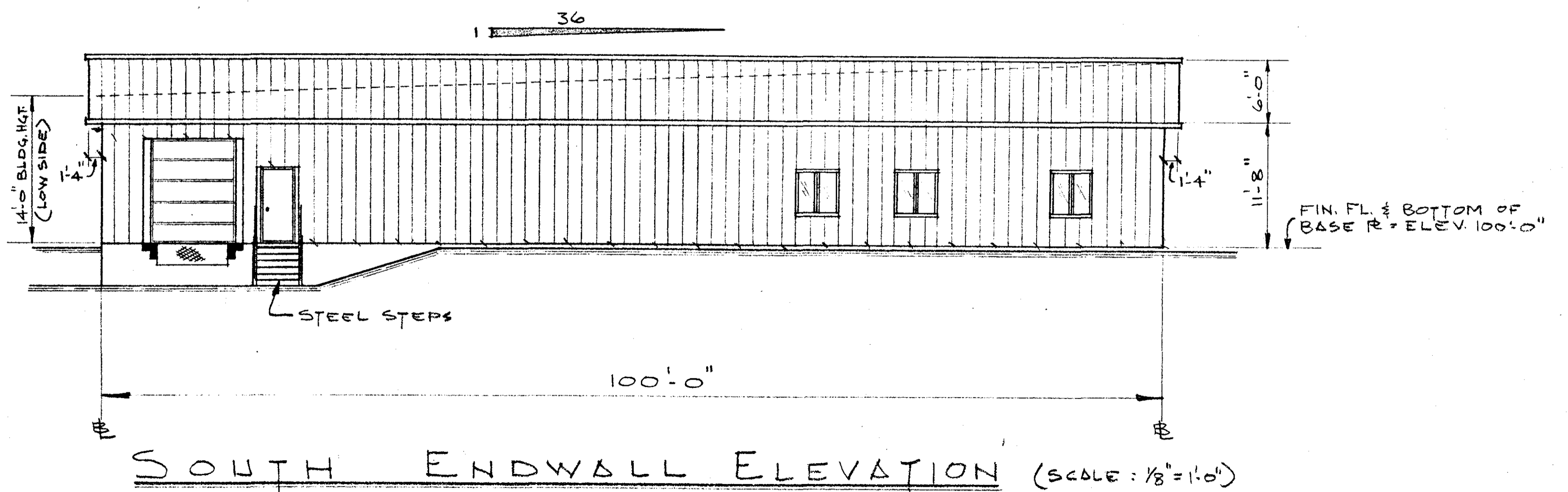
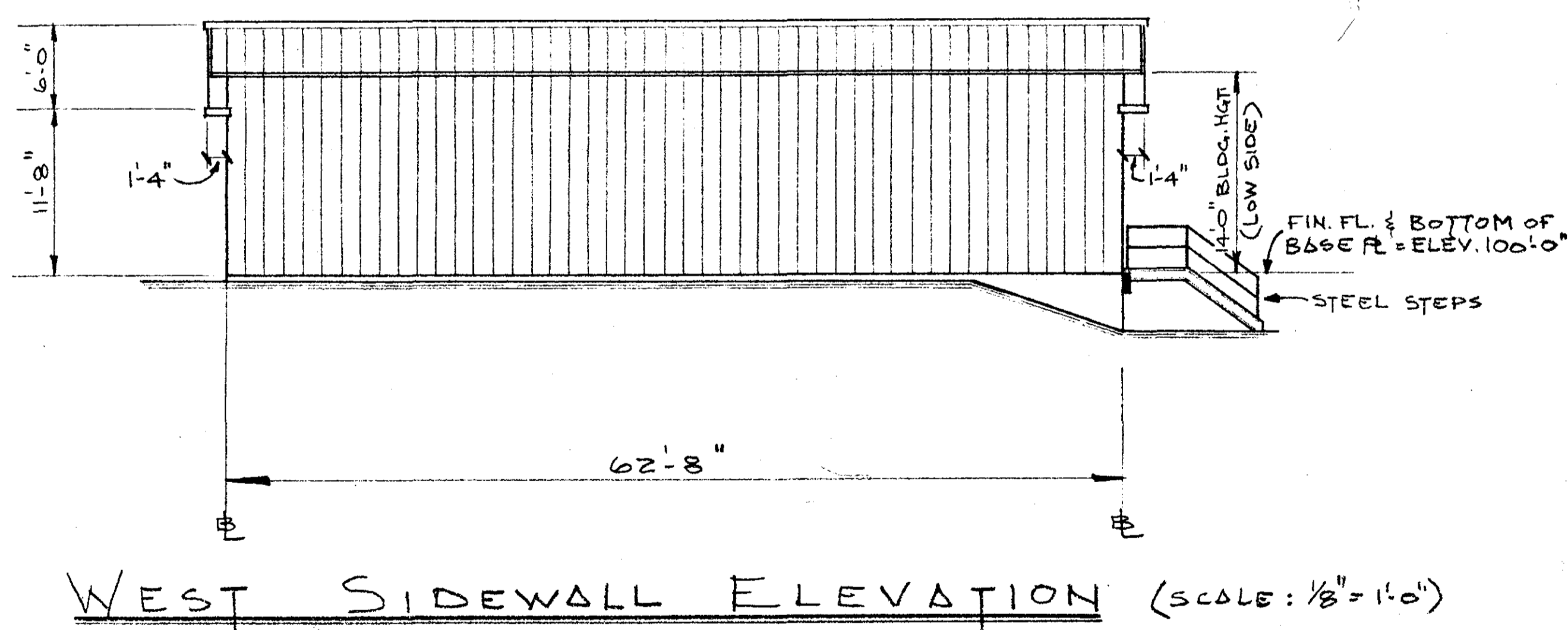
REVISIONS				EASTERN MAINE		Date		Sheet No	
1				3/20/87			1		
2				3/20/87					
3									
4									
5									

Design	Construct	Job
603 MAIN ROAD NORTH HAMPTON, MAINE 04847		



**NOTES:**

- 1) - WALL COLOR TO BE COUGAR TAN.
- 2) - TRIM & FACADE COLOR TO BE BRONZE.
- 3) - "CF" ROOF W/264 AL. PANELS.
- 4) - ALL PIPE COLUMNS TO BE 10" LONGER THAN STANDARD.
- 5) - ROOF PANELS ON HIGH SIDE TO BE 14" LONGER THAN STANDARD DUE TO FACADE (I.E. 15 1/2" BEYOND BLDG. LINE)
- 6) - ROOF COVER TO EXTEND 16" BEYOND ENDWALL DUE TO FACADE.

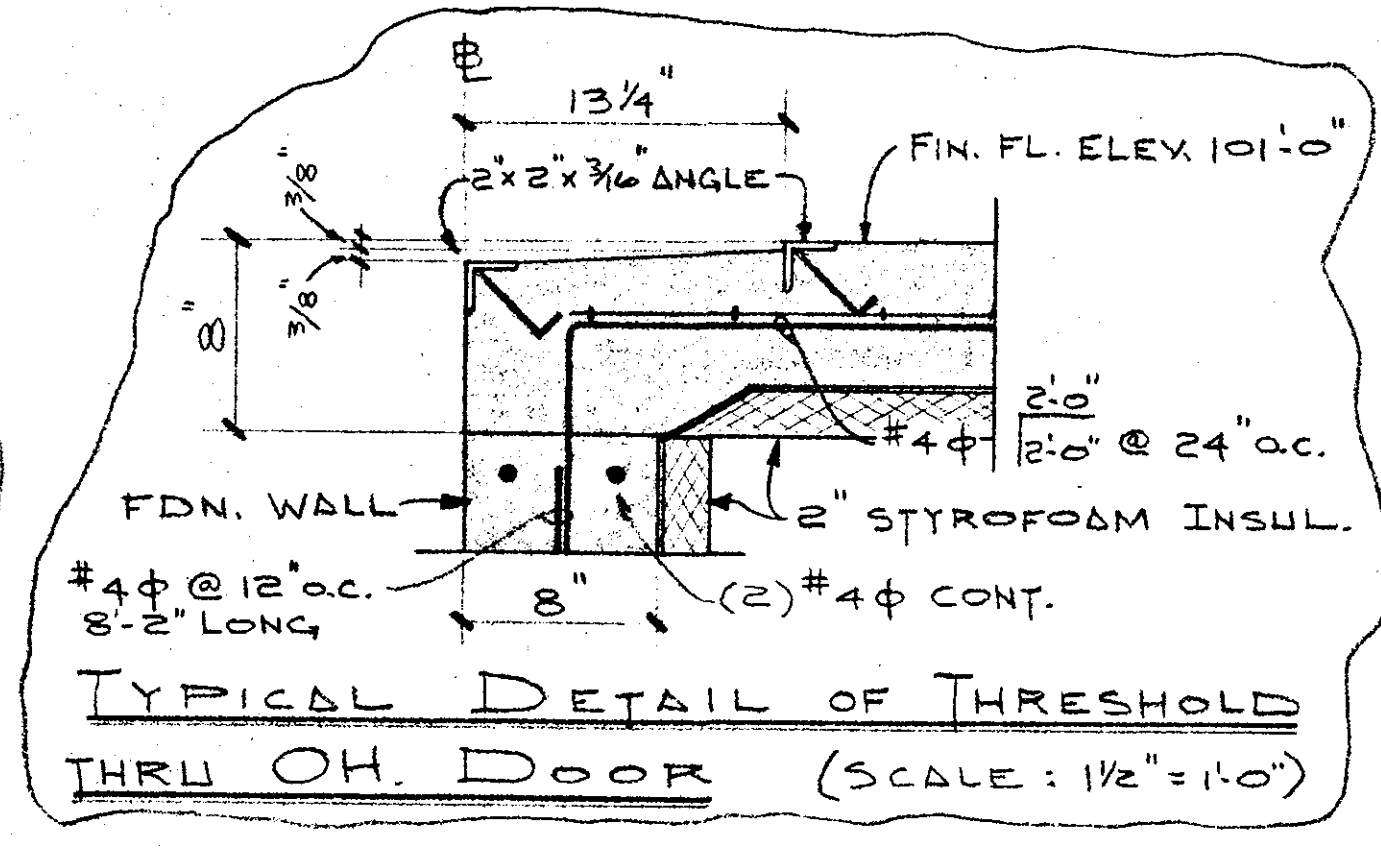
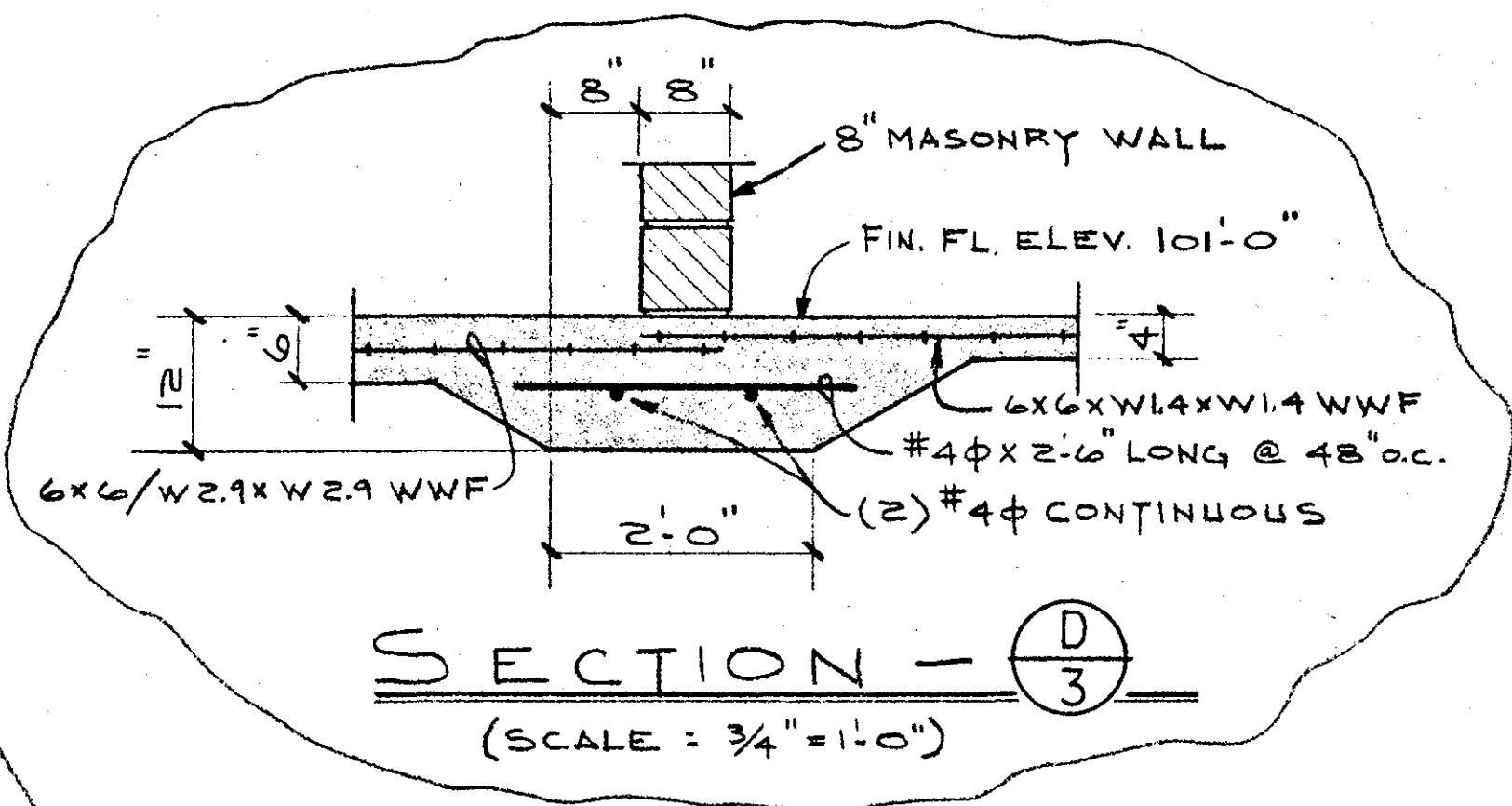
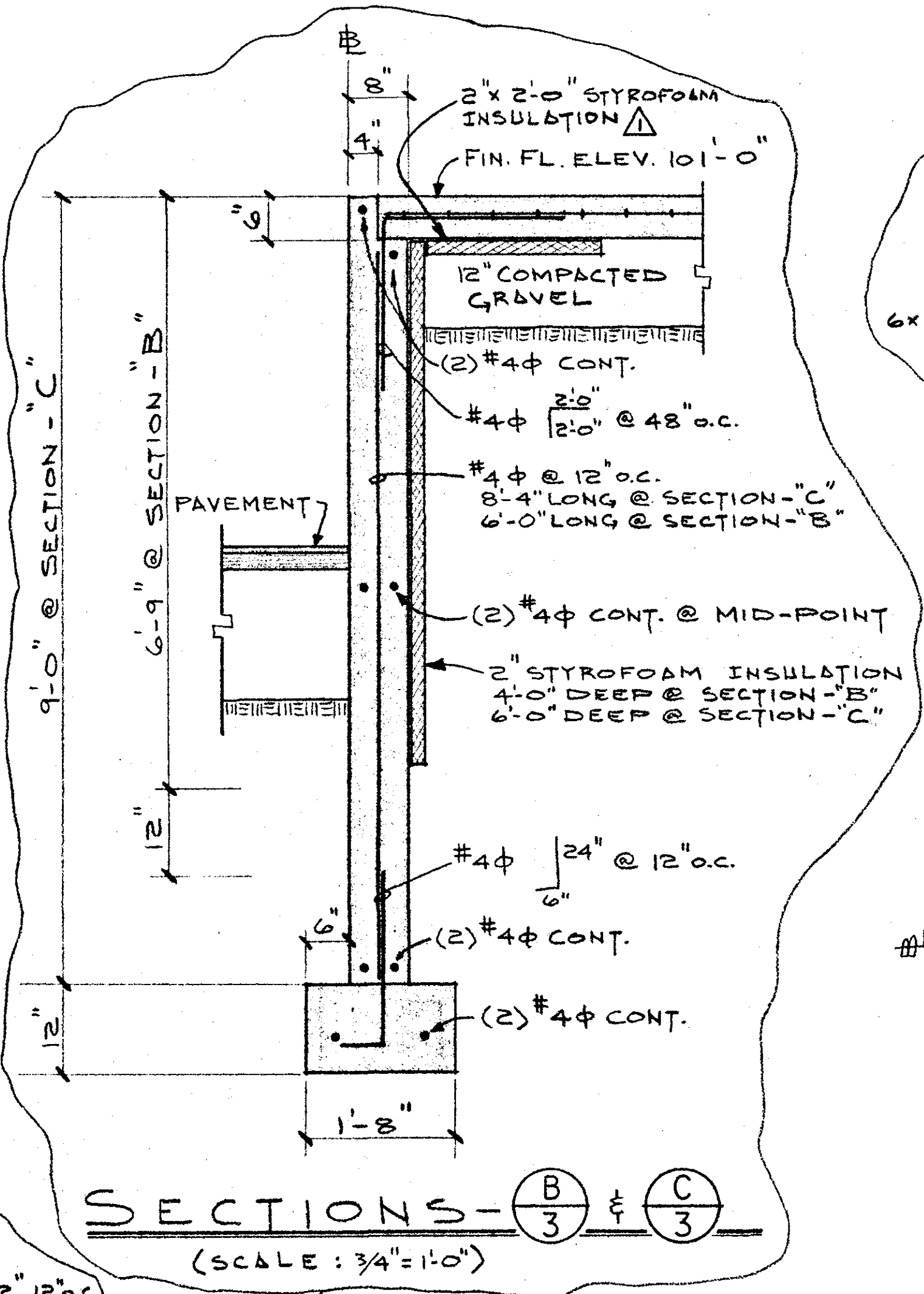
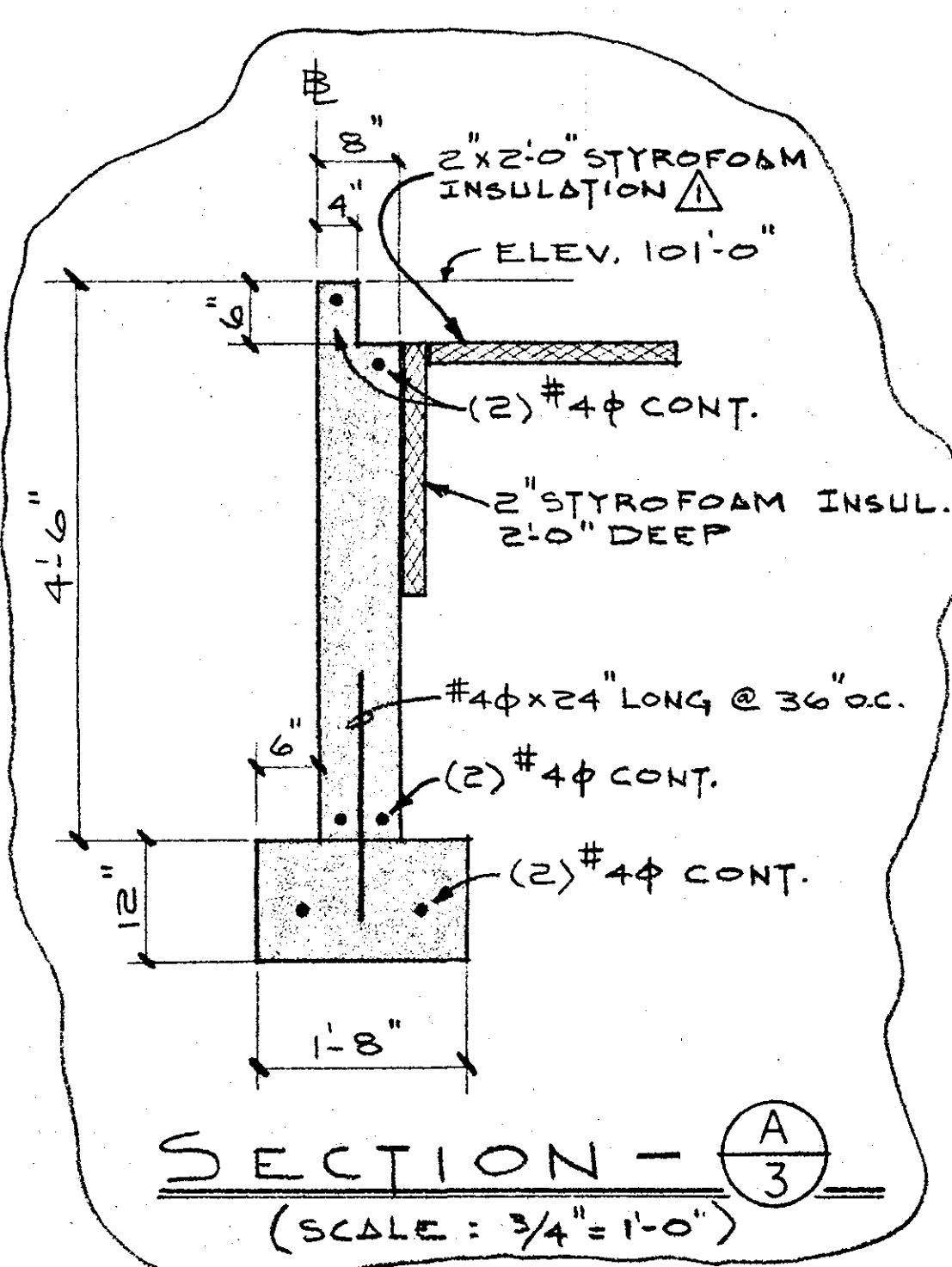


SS-80 5/15 100' x 62'-8" x 14' (LOW SIDE)

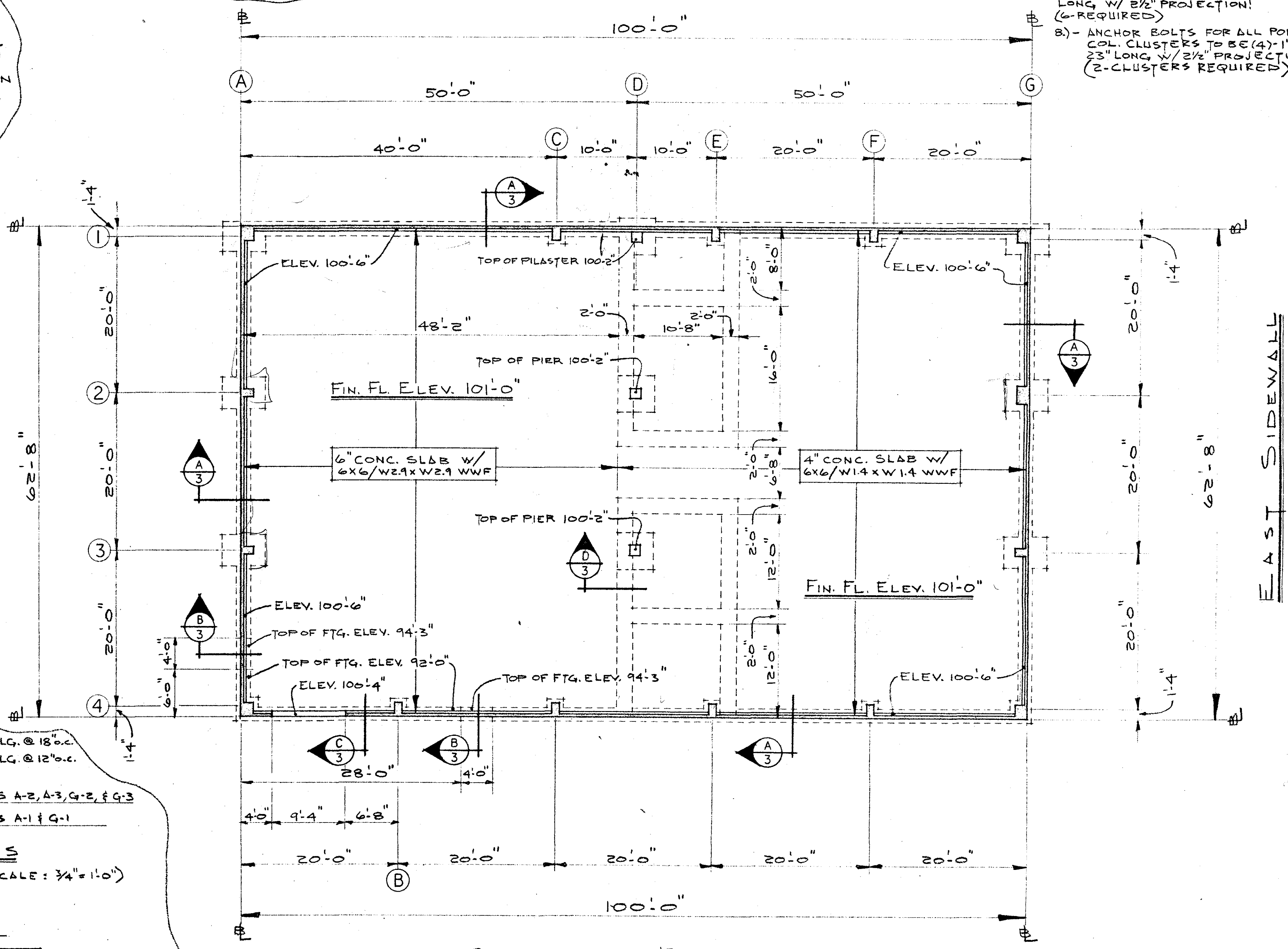
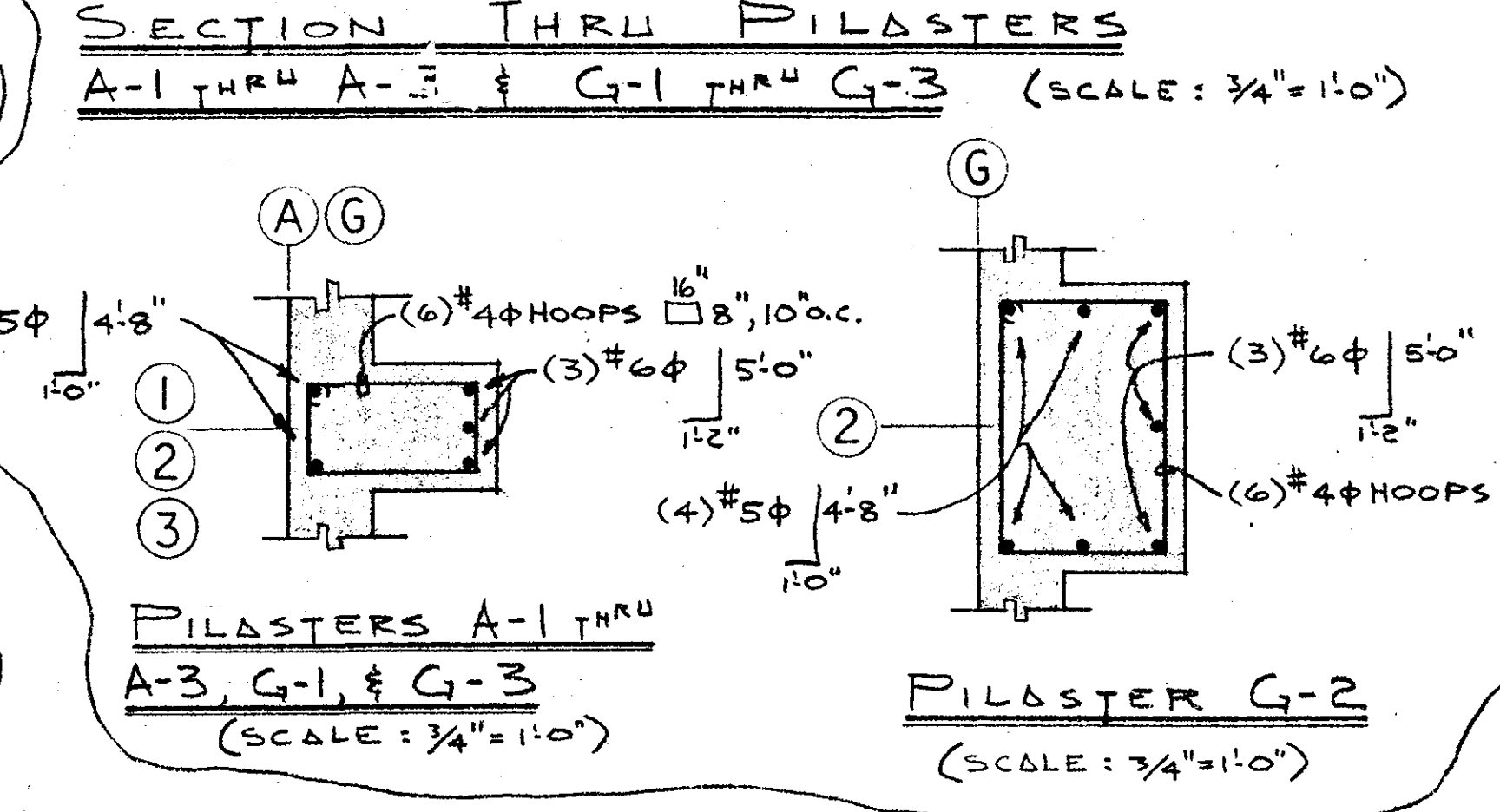
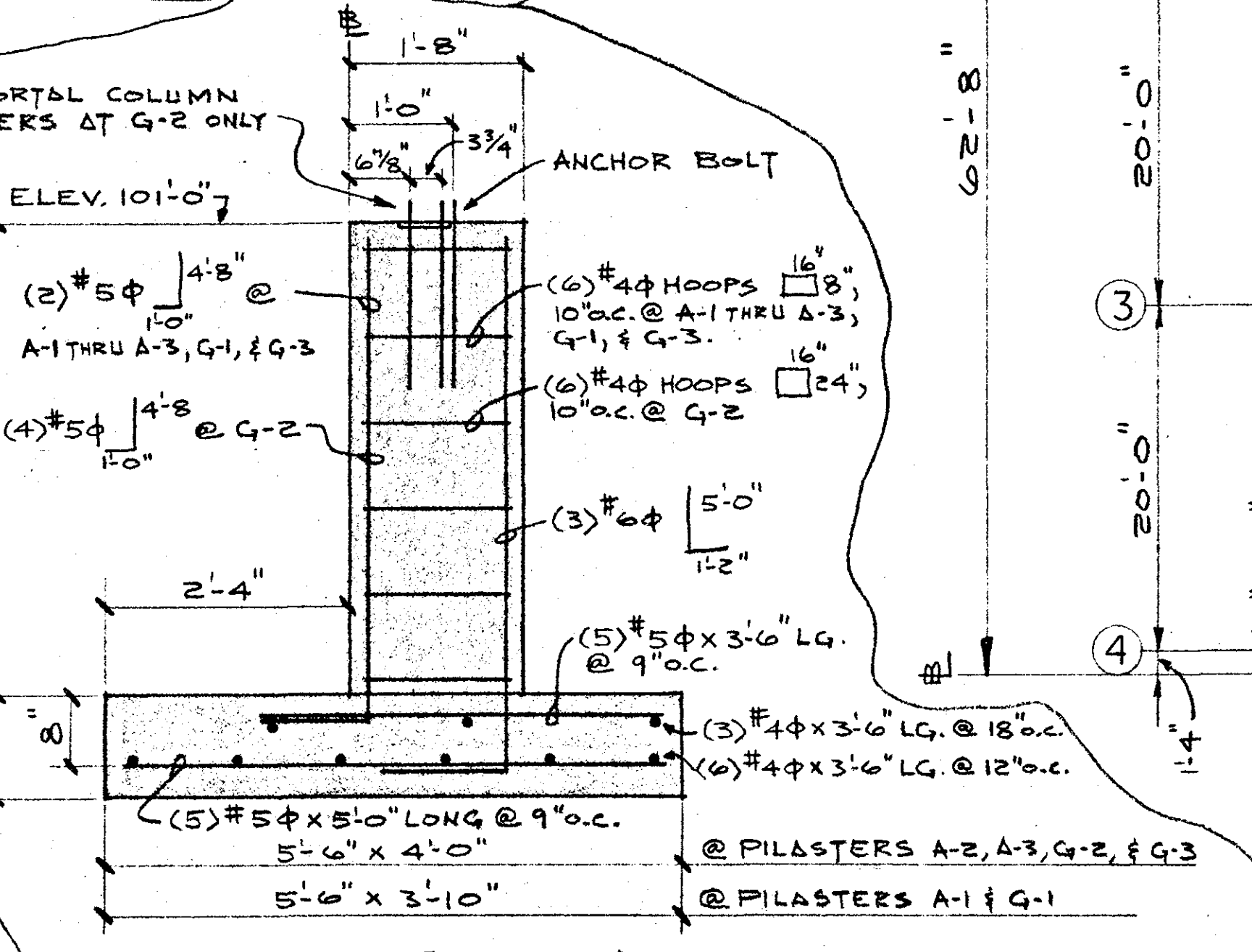
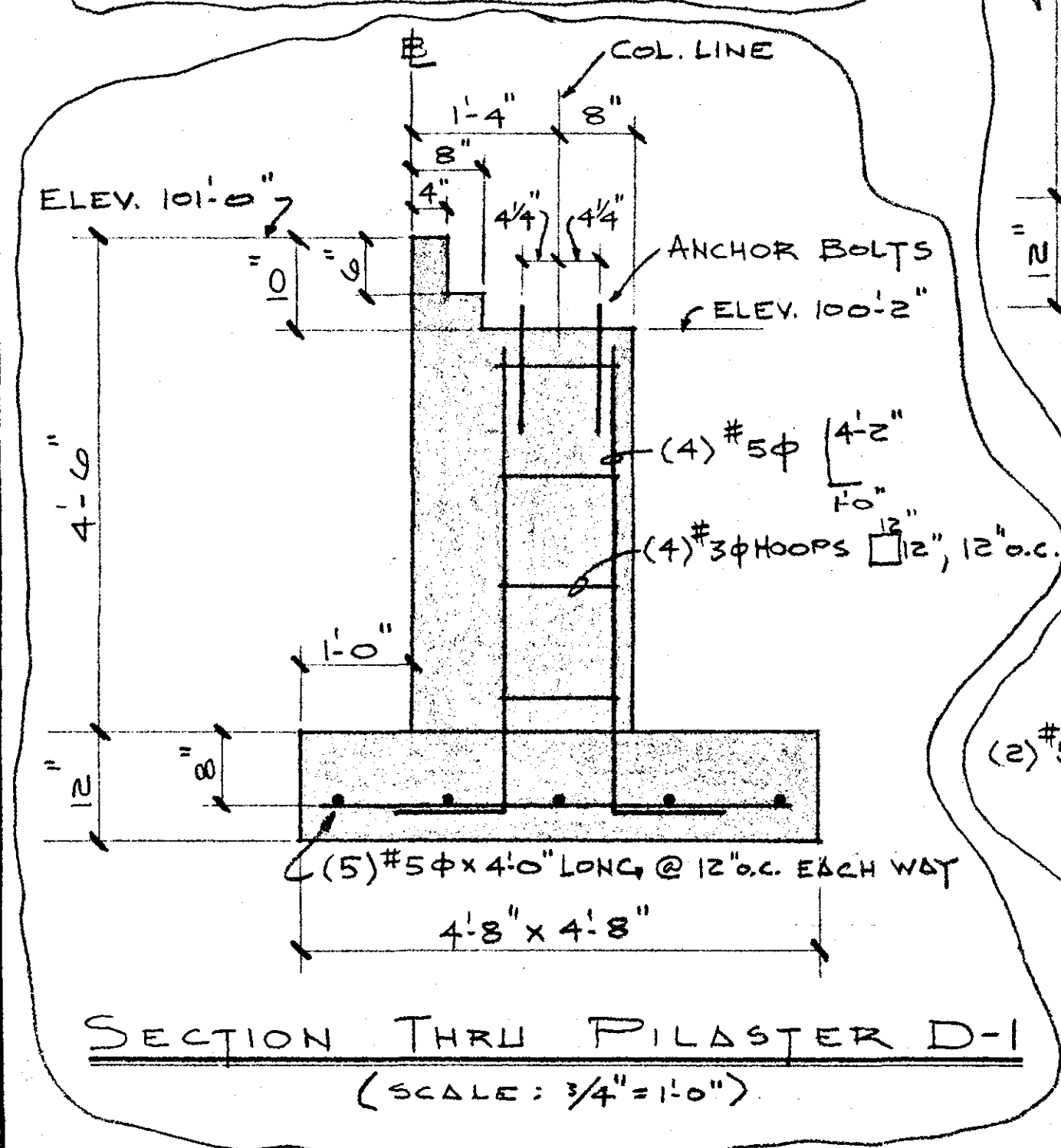
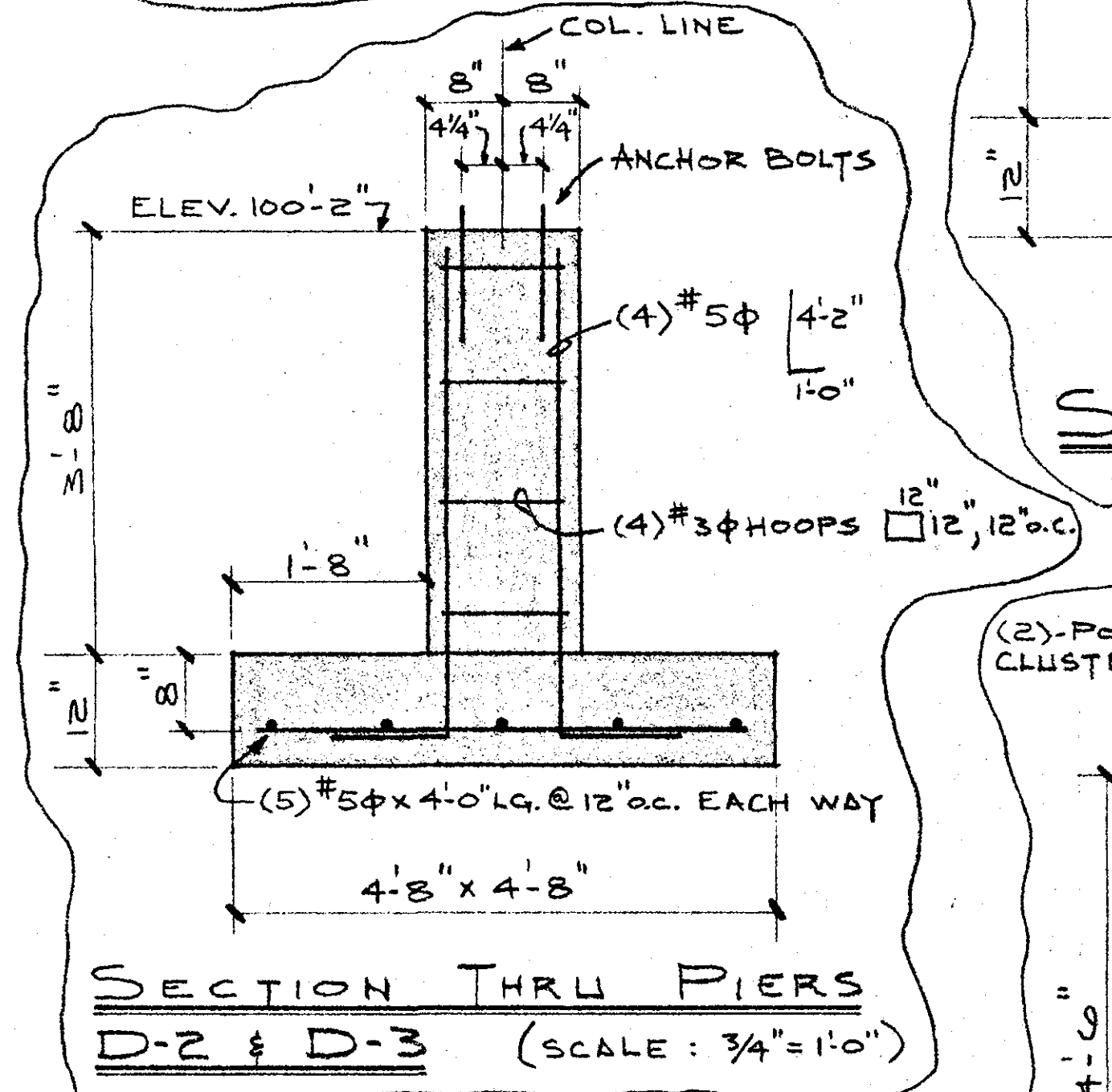
ARMCO

REVISIONS				EASTERN MAINE		Date
1				3/16/87		
2				DEVELOPMENT CORP.	Drawn By	
3					S.M.G.	
4				EAST MILLINOCKET, ME	Scale	
5					AS SHOWN	

Design		Construct	Sheet No
			2.
			Job No
			243-87

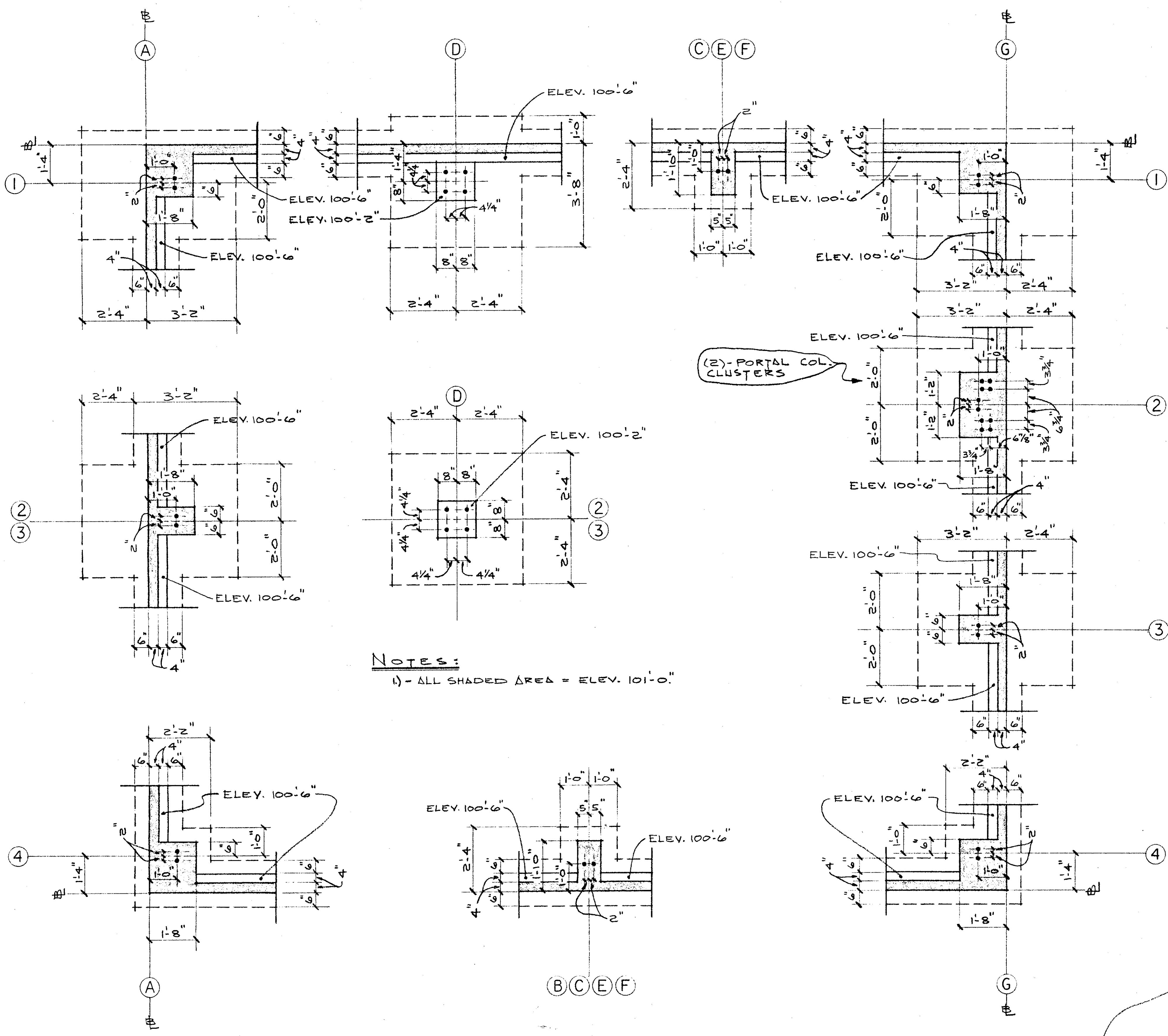


- NOTES:**
- 1) - ALL SHADED AREA = ELEV. 101'-0"
  - 2) - TOP OF ALL FOOTING TO BE ELEV. 96'-6" UNLESS OTHERWISE SHOWN.
  - 3) - ALL CONCRETE TO BE 3,000 PSI W/ POZZOLITH.
  - 4) - ALL RE-BAR TO BE GRADE - 60.
  - 5) - ANCHOR BOLTS FOR PILASTERS A-1 THRU A-3 & G-1 THRU G-3 TO BE 1/4" x 2 1/8" LONG W/ 2 1/2" PROJECTION. (6-REQUIRED)
  - 6) - ANCHOR BOLTS FOR PILASTERS B-4, C-1, C-4, E-1, E-4, F-1, & F-4 TO BE 7/8" x 1 3/16" LONG W/ 2 1/2" PROJECTION. (7-REQUIRED)
  - 7) - ANCHOR BOLTS FOR PILASTERS D-1 THRU D-3 TO BE 5/8" x 1 3/16" LONG W/ 2 1/2" PROJECTION! (6-REQUIRED)
  - 8) - ANCHOR BOLTS FOR ALL PORTAL COL. CLUSTERS TO BE (4)-1" x 23" LONG W/ 2 1/2" PROJECTION. (2-CLUSTERS REQUIRED)



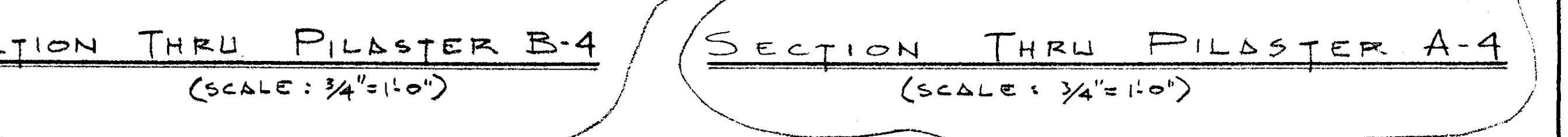
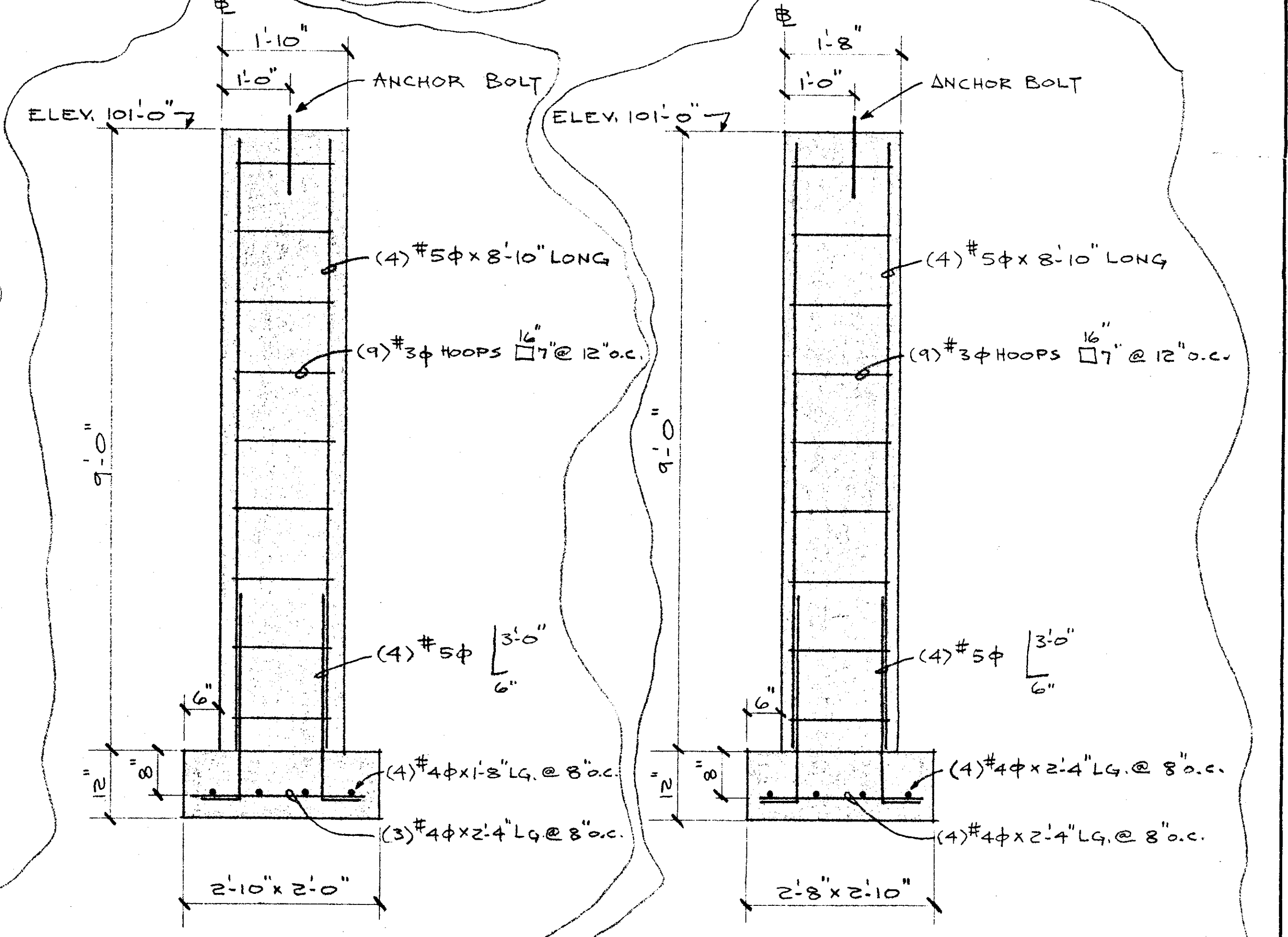
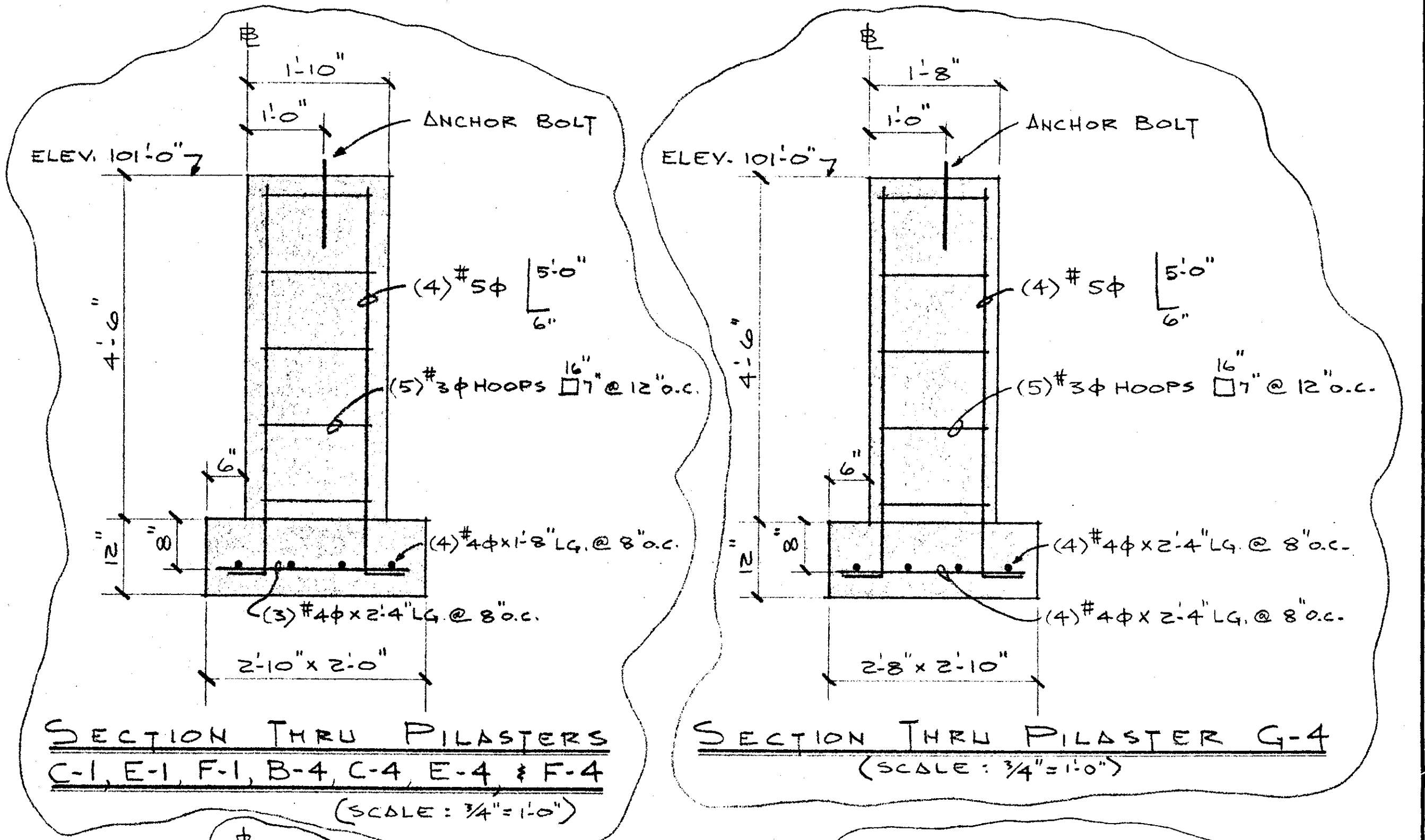
REVISIONS			EASTERN MAINE DEVELOPMENT CORP.		Date	Sheet No.
1	SHOWN STYROFOAM UNDER SLAB	SG	4/3	3/25/87	3	
2						
3						
4						
5						

Design	Construct	Job No.
		243-87
403 MAIN ROAD NORTH HAMDEN, MAINE 04444		



**NOTES:**  
 1) - ALL SHADED AREA = ELEV. 101'-0"

**PILASTER DETAILS** (SCALE: 1/2" = 1'-0")



REVISIONS	No	By	Date
	1		
	2		
	3		
	4		
	5		

<b>EASTERN MAINE</b>	Date 3/26/87
<b>DEVELOPMENT, CORP.</b>	Drawn By S.M.G.
<b>EAST MILLINOCKET, ME</b>	Scale AS SHOWN

Design		Sheet No 4.
363 MAIN ROAD NORTH HAMPTON, MAINE 04444		Job No 243-87



# ROOM FINISH SCHEDULE

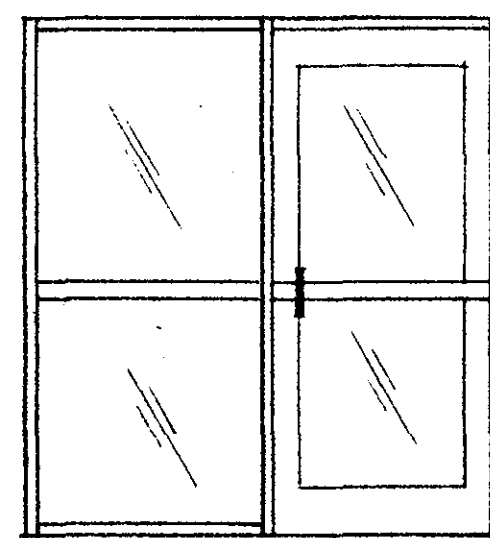
ROOM No.	ROOM NAME	FLOOR	BASE	WALLS				CLG.	CLG. HGT.	REMARKS
				NORTH	SOUTH	EAST	WEST			
110	OFFICE	VT	V	GWB	GWB	GWB	GWB	AC	8'-0"	
111	CONFERENCE & TESTING	VT	V	GWB	GWB	GWB	GWB	AC	8'-0"	
112	CONFERENCE & TESTING	VT	V	GWB	GWB	GWB	CB	AC	8'-0"	
113	VESTIBULE	VT	V	GWB	GWB	GWB	GLASS	AC	8'-0"	
114	CORRIDOR	VT	V	GWB	GWB	GWB	CB	AC	8'-0"	
115	CLASSROOM	VT	V	GWB	GWB	GWB	GWB	AC	9'-6"	CHALK Bd. LOCATED BY- OWNER
116	CLASSROOM	VT	V	GWB	GWB	GWB	CB	AC	9'-6"	CHALKED. LOCATED BY- OWNER
117	FUEL ROOM	EC	-	GWB	CB	CB	CB	EX	-	
118	MEN'S ROOM	VT	V	CB	CB	CB	CB	AC	8'-0"	EPOXY PAINT ALL WALLS
119	STORAGE CLOSET	EC	-	CB	CB	CB	CB	GWB	8'-0"	
120	JANITOR'S CLOSET	EC	-	CB	CB	CB	CB	GWB	8'-0"	
121	LADIES' ROOM	VT	V	CB	CB	CB	CB	AC	8'-0"	EPOXY PAINT ALL WALLS
122	MECHANICAL ROOM	EC	-	CB	GWB	CB	CB	EX	-	
123	SHOP	EC	-	PB	PB	CB	PB	EX	-	PB TO UNDERSIDE OF ROOF

# DOOR SCHEDULE

DOOR No.	SIZE	TYPE	FRAME	SILL	WALL THICK.	REMARKS
1	6'-8" x 7'-2" H	A	ALUM	ALUM	5"	KAWNEER 190 NARROW STYLE W/LOCKSET, CLOSER, WEATHERSTRIPPING, & 1" INSULATING GLASS
2	8'-0" x 7'-2" H	A	ALUM	ALUM	-	KAWNEER 190 NARROW STYLE W/LOCKSET, CLOSER, WEATHERSTRIPPING, & 1/4" TEMPERED GLASS
3	3'-6"	B	DW	-	5"	LOCKSET & WALL MOUNTED STOP
4	3'-6"	B	DW	-	5"	LOCKSET & WALL MOUNTED STOP
5	3'-6"	B	DW	-	5"	LOCKSET & WALL MOUNTED STOP
6	3'-6"	B	DW	-	5"	LOCKSET & WALL MOUNTED STOP
7	3'-6"	B	DW	-	5"	LOCKSET & WALL MOUNTED STOP
8	6'-7"	C	HM	-	7 7/8"	4"-HEAD, LOCKSET, CLOSER, 10" x 10" GLASS, STAINLESS STEEL KICKPLATES, & WALL MOUNTED STOPS.
9	2'-7"	D	HM	-	7 7/8"	4"-HEAD, LOCKSET
10	2'-7"	D	HM	-	7 7/8"	4"-HEAD, LOCKSET
11	3'-7"	D	HM	-	7 7/8"	4"-HEAD, 1/2 HOUR RATED, LOCKSET & CLOSER.
12	3'-7"	D	HM	-	7 7/8"	4"-HEAD, 1/2 HOUR RATED, LOCKSET & CLOSER.
13	3'-7" ARMCO	E	HM	ALUM	5"	MORTISE TYPE PANIC HARDWARE, HOLD OPEN CLOSER, & WEATHERSTRIPPING.
14	3'-7" ARMCO	E	HM	ALUM	5"	MORTISE TYPE PANIC HARDWARE, HOLD OPEN CLOSER, & WEATHERSTRIPPING.
15	8'-2" x 10'-1" H	-	-	-	-	WAYNE DALTON, 24 GA. POLYSTYRENE INSUL, STANDARD LIFT, MANUAL OPER., STANDARD HARDWARE, & W.S.

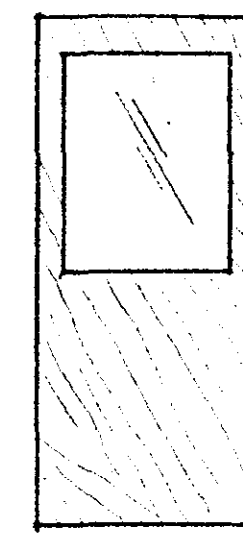
## LEGEND

CODE	FLOORS
EC	EXPOSED CONCRETE
VT	VINYL COMPOSITION TILE
BASES	
V	4" VINYL COVE
WALLS	
CB	8" HOLLOW MASONRY BLOCK - PAINTED
GWB	1/2" GYPSUM WALL BOARD - PAINTED
PB	1/2" PARTICLE BOARD - PAINTED
CEILING	
AC	2' x 4' x 5/8" SUSPENDED ACOUSTICAL TILE
GWB	1/2" GYPSUM BOARD - PAINTED
EX	EXPOSED TO UNDERSIDE OF ROOF INSULATION



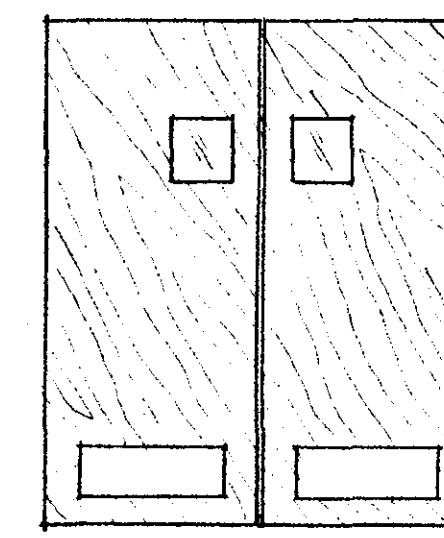
TYPE - "A"

ALUMINUM ENTRANCE W/ BRONZE FINISH



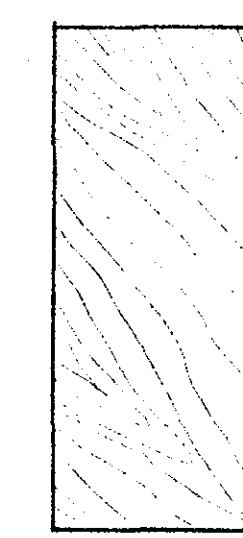
TYPE - "B"

1 3/4" SOLID CORE BIRCH W/ 1/2 GLASS



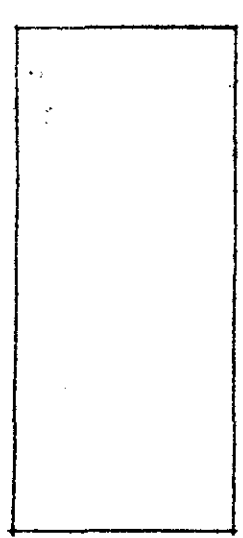
TYPE - "C"

1 3/4" SOLID CORE BIRCH W/ 10" x 10" GLASS & STAINLESS STEEL KICKPLATES EACH SIDE



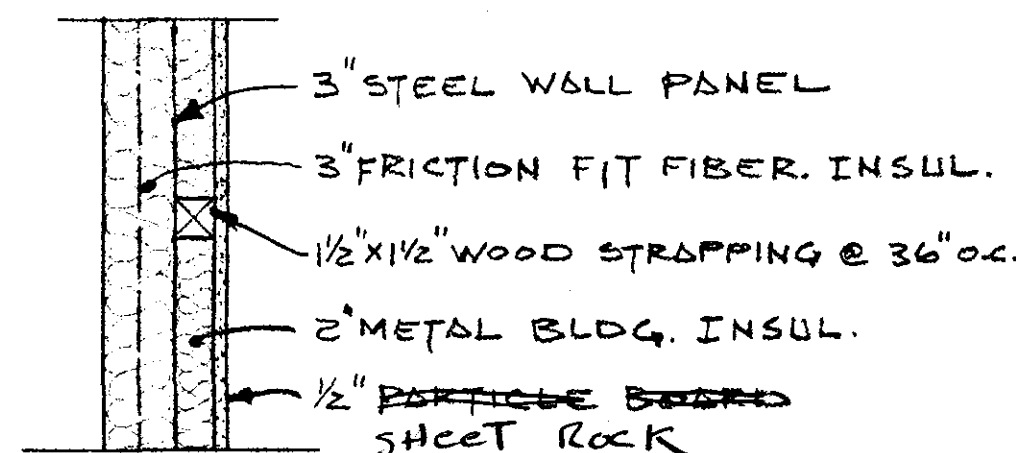
TYPE - "D"

1 3/4" SOLID CORE BIRCH FLUSH DOOR

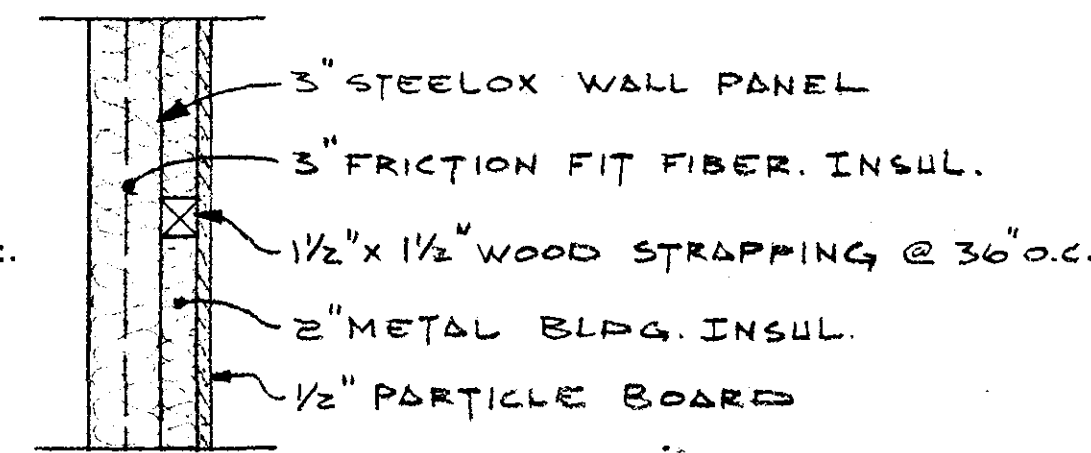


TYPE - "E"

1 3/4" FLUSH, INSULATED 18 GA. DOOR



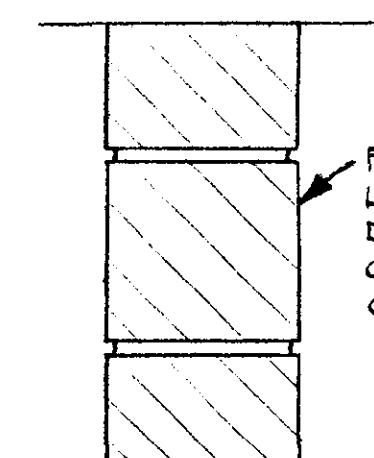
TYPE 4



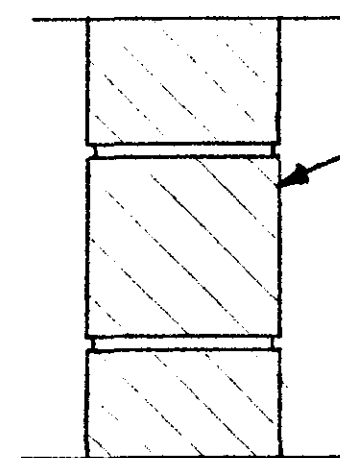
TYPE 5

### NOTES:

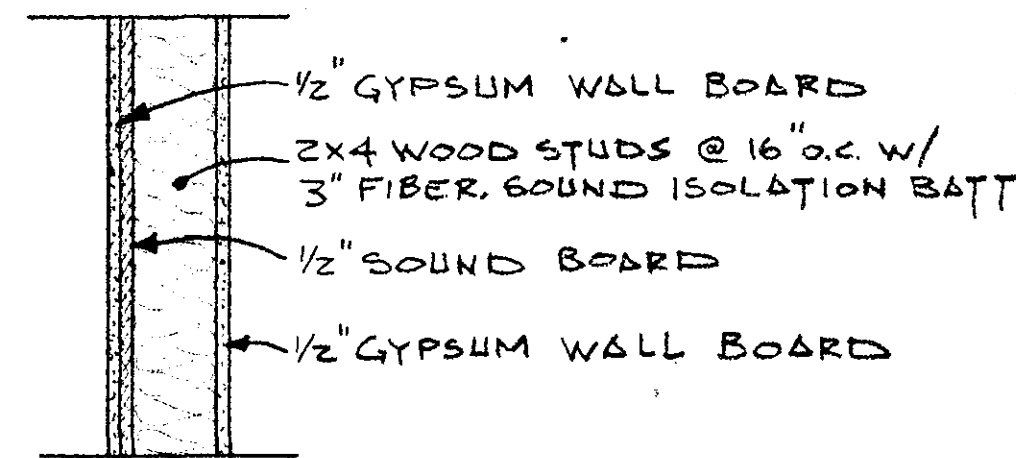
- 1) - ROOF INSULATION TO BE 2" UN-FACED FIBERGLASS INSULATION AND 4" VINYL FACED FIBERGLASS INSULATION.
- 2) - EXTERIOR WINDOWS (11-TOTAL) TO BE 3'-10" W. x 4'-0" H. BRONZETONE SLIDING SASH W/ 7/8" THERMAL GLASS, STORM SASH, & SCREEN.
- 3) - INTERIOR WINDOW (ROOM-110) TO BE 4' x 4' SLIDING TYPE W/ 1/4" FLOAT GLASS, ALUM. TRACK, AND RATCHET LOCK.
- 4) - FOR LOCATIONS OF WALL TYPES SEE SHEET # 1.



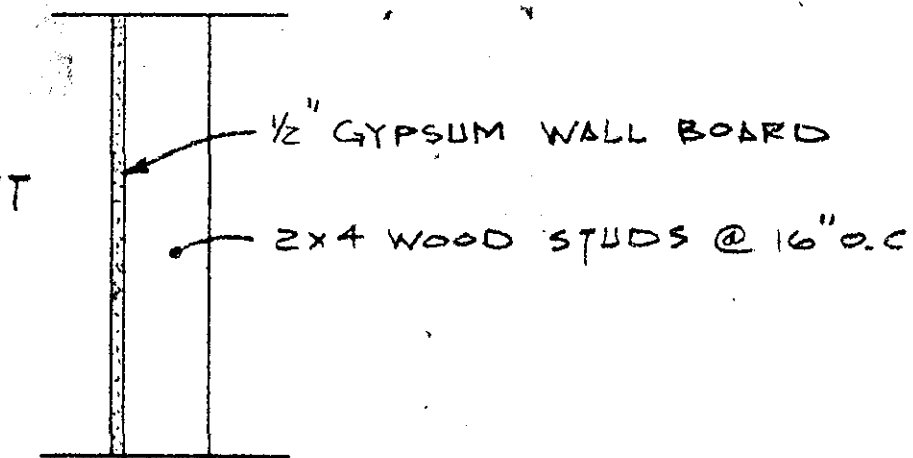
TYPE 1



TYPE 2



TYPE 3



TYPE 6

### REVISIONS

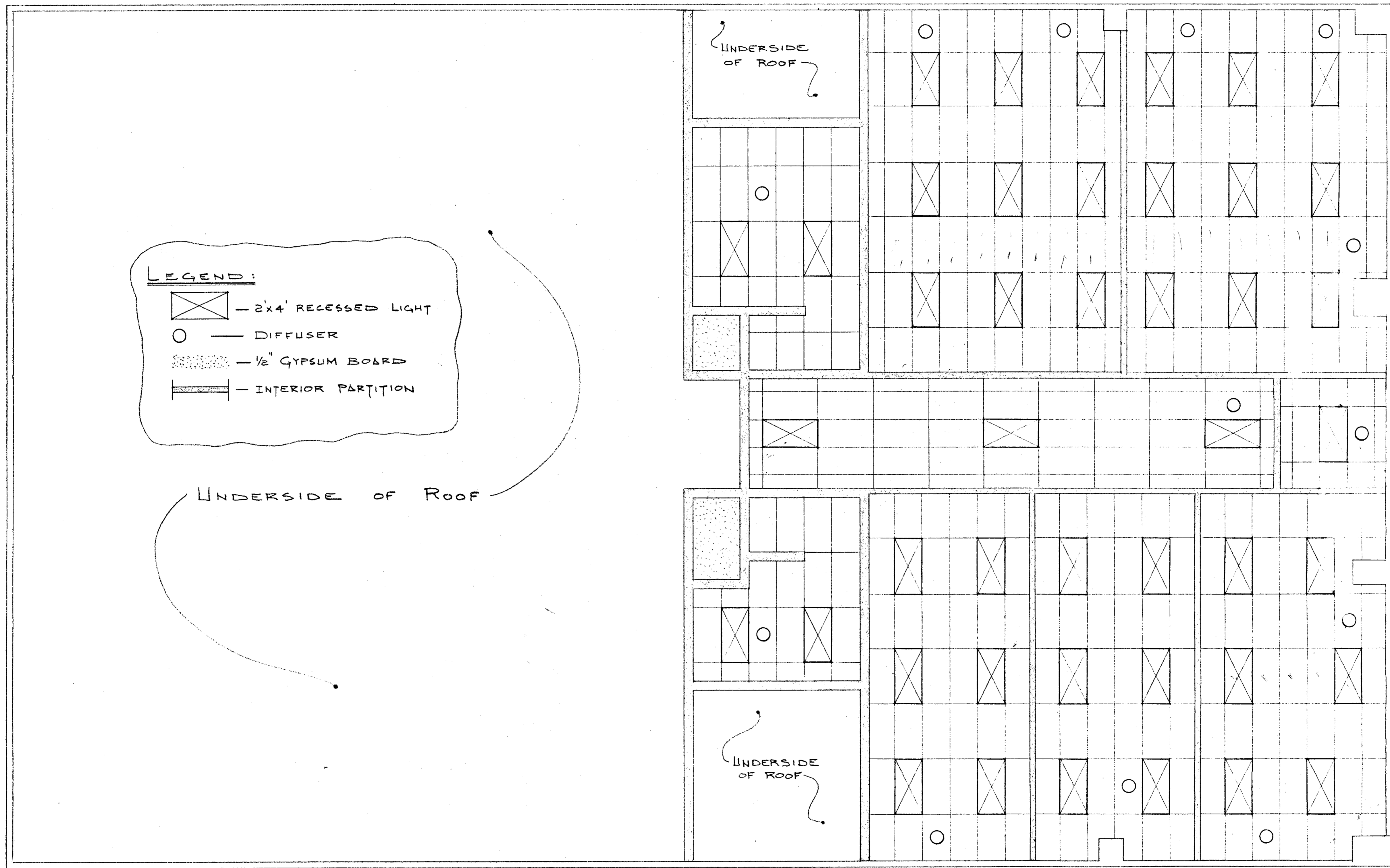
No	By	Date
1		
2		
3		
4		
5		

EASTERN MAINE  
DEVELOPMENT CORP.  
EAST MILLINOCKET, ME

Date  
3/30/87  
Drawn By  
S.M.G.  
Scale  
AS SHOWN


Design  
**HARDY**  
Construct  
603 MAIN ROAD NORTH  
HAMDEN, MAINE 04444

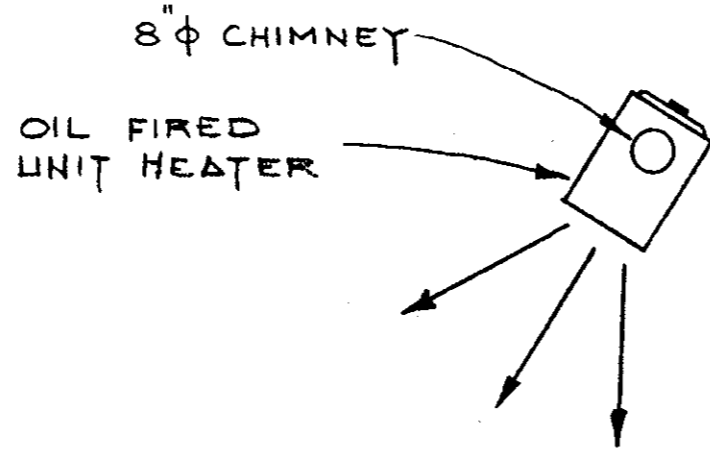
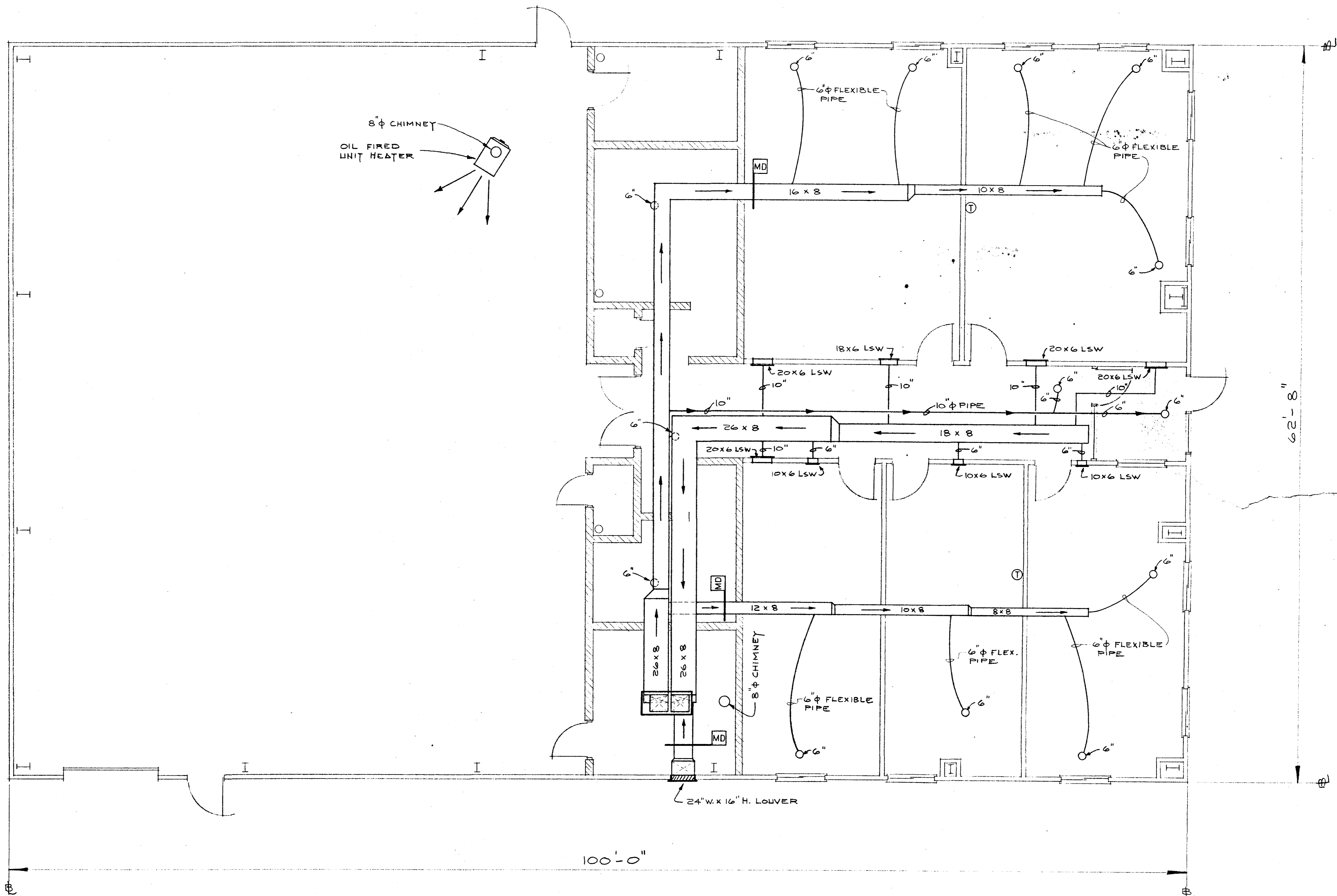
Sheet No  
5  
Job No  
242-87



**LEGEND:**  
 [X] - 2'x4' RECESSED LIGHT  
 ○ - DIFFUSER  
 [Stippled] - 1/2" GYPSUM BOARD  
 [Double Line] - INTERIOR PARTITION

REFLECTED CEILING PLAN  
 (SCALE: 1/4" = 1'-0")


REVISIONS				EASTERN MAINE DEVELOPMENT CORP. EAST MILLINOCKET, ME	Date 3/27/87 Drawn By S.M.G. Scale AS SHOWN	Design  Construct	Sheet No 6 Job No 243-87
No	By	Date					
1							
2							
3							
4							
5							



SOUTH ENDWALL

MECHANICAL PLAN

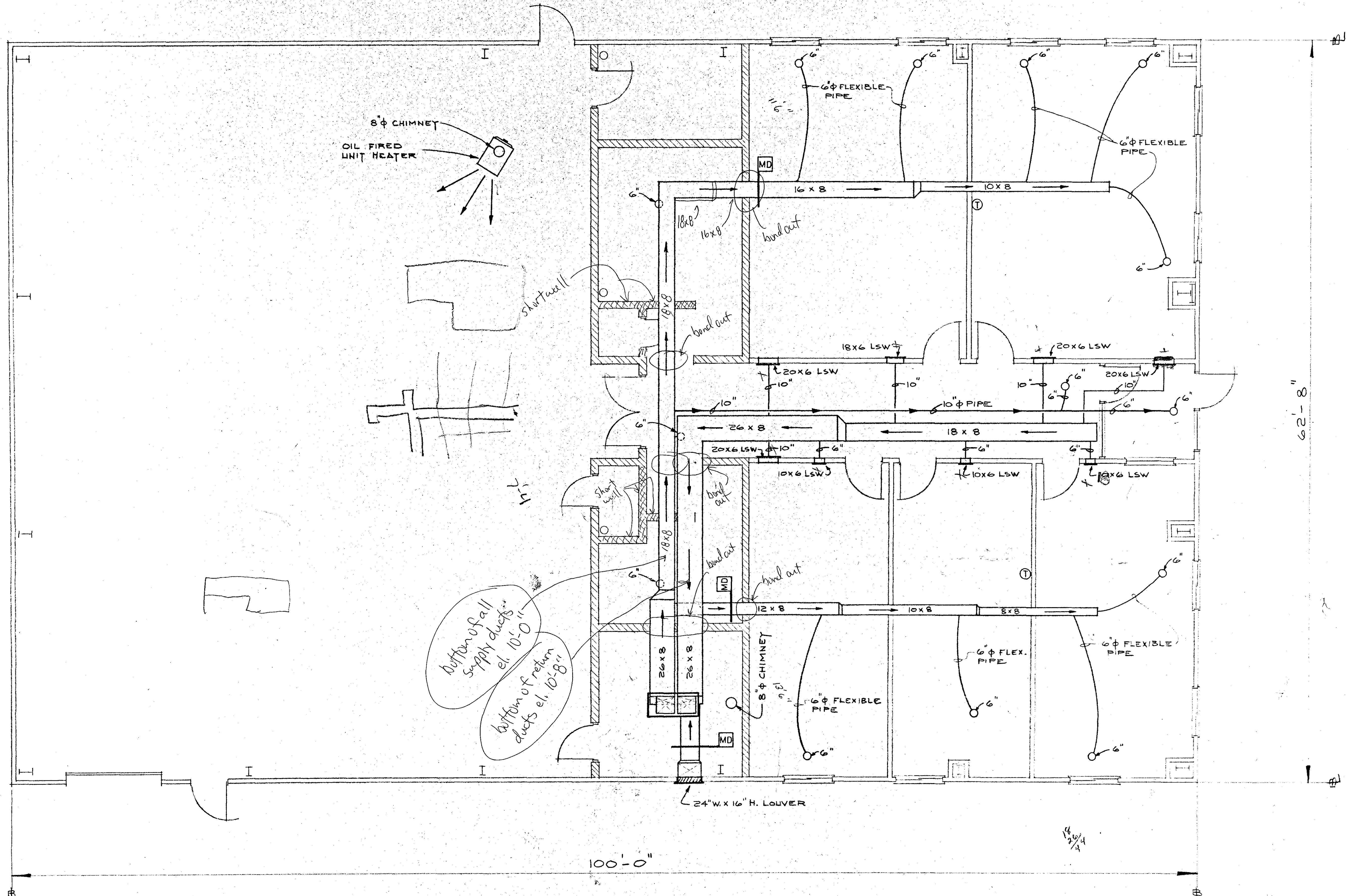
(SCALE: 1/4" = 1'-0")

REVISIONS				EASTERN MAINE DEVELOPMENT CORP. EAST MILLINOCKET, ME	Date 4/24/87 Drawn By S.M.C. Scale AS SHOWN	Design  Construct	Sheet No M-1 Job No 243-87
No	By	Date					
1							
2							
3							
4							
5							

EAST SIDEWALL

62'-8"

100'-0"



SOUTH ENDWALL

EAST SIDEWALL

MECHANICAL PLAN

(SCALE: 1/4"=1'-0")

REVISIONS				EASTERN MAINE DEVELOPMENT CORP. EAST MILLINOCKET ME	Date 4/24/87 Drawn By S.M.G. Scale AS SHOWN	Design <b>HARDY</b> Construct	Sheet No M-1 Job No 243-8
No	By	Date					
1							
2							
3							
4							
5							