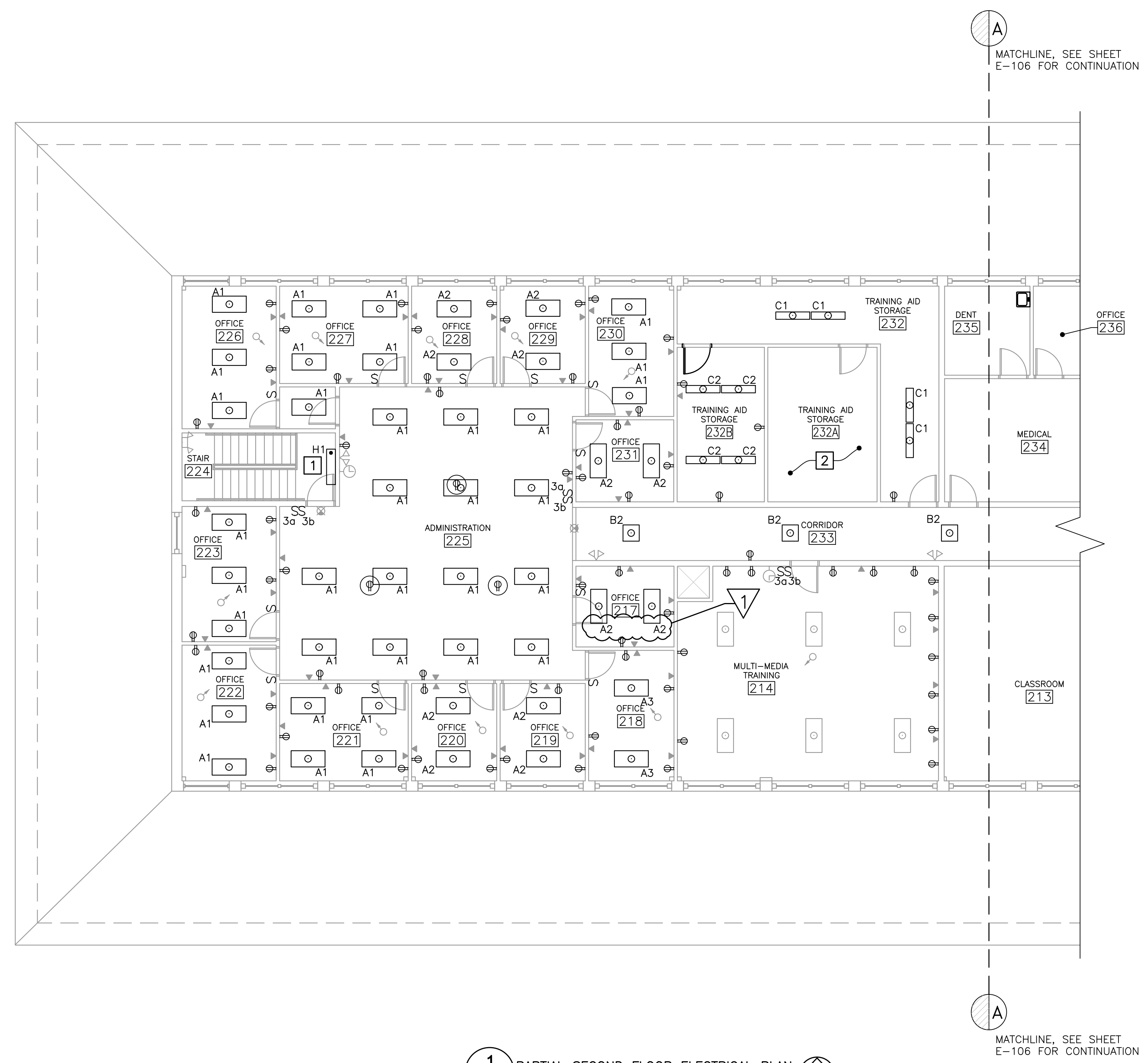
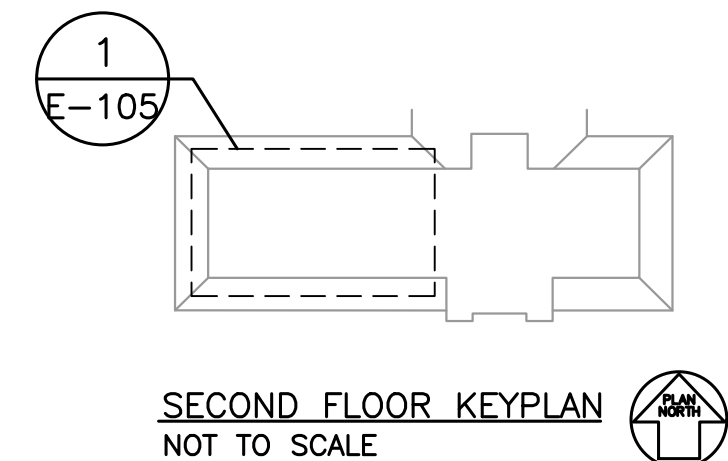


- GENERAL NOTE**
- CONNECT LIGHT FIXTURES TO EXISTING BRANCH CIRCUIT CONDUIT AND CONDUCTORS.
 - CONNECT RECEPTACLES TO EXISTING BRANCH CIRCUIT CONDUIT AND CONDUCTORS. PROVIDE FACEPLATES AND CLEAR LABEL WITH CIRCUIT INFORMATION.
 - CONNECT SWITCHES TO EXISTING BRANCH CIRCUIT CONDUIT AND CONDUCTORS. PROVIDE FACEPLATES AND CLEAR LABEL WITH CIRCUIT INFORMATION.
 - SEE "GENERAL FIRE PROTECTION NOTES", SHEET AE001 FOR RATED WALLS AND ALL FLOOR PENETRATION REQUIREMENTS.
 - COORDINATE WORK ON THIS SHEET WITH IT RENOVATION PROJECT: "TELECOM ROOM UPGRADES, BGS PROJECT NO. 3231, DFE PROJECT NO. 23SC19-310-D3" DRAWINGS PREPARED BY COLBY COMPANY ENGINEERING DATED AUGUST 10, 2023.

- KEYNOTE (THIS SHEET ONLY)**
- MOUNT AT 8 FEET ABOVE STAIRWAY PLATFORM.
 - REFER TO "TELECOM ROOM UPGRADES" DRAWINGS PREPARED BY COLBY COMPANY ENGINEERING FOR REMOVALS AND RENOVATIONS OF IT ROOM.



1 PARTIAL SECOND FLOOR ELECTRICAL PLAN
E-105 SCALE: 1/8"=1'-0"



PLAN REVISIONS

Rev#	Description	Date	Appr.
1	ADDENDUM #2	8/24/23	

DESIGNED BY: MHL
 DRAWN BY: RSW
 CHECKED BY: DCL
 DATE: 08/11/2023
 SCALE: AS NOTED
 DFE PROJECT NO: 23SR22-401-1

STATE OF MAINE
 DEPARTMENT OF DEFENSE, VETERANS
 AND EMERGENCY MANAGEMENT

OAK POINT ASSOCIATES
 ARCHITECTURE, ENGINEERING, & PLANNING
 231 MAIN STREET
 BIDDEFORD, MAINE
 207-283-0193

AFRC RENOVATION
 BANGOR, MAINE

PARTIAL
 SECOND FLOOR ELECTRICAL PLAN - 1

PLAN PROGRESS

<input type="checkbox"/>	DRAFT
<input type="checkbox"/>	50% REVIEW
<input type="checkbox"/>	65% REVIEW
<input type="checkbox"/>	95% REVIEW
<input type="checkbox"/>	FINAL REVIEW
<input checked="" type="checkbox"/>	FOR BIDDING
<input type="checkbox"/>	ISSUED FOR CONSTRUCTION
<input type="checkbox"/>	RECORD DRAWINGS

SHEET ID:
E-105
 SHEET: 86 OF 88

