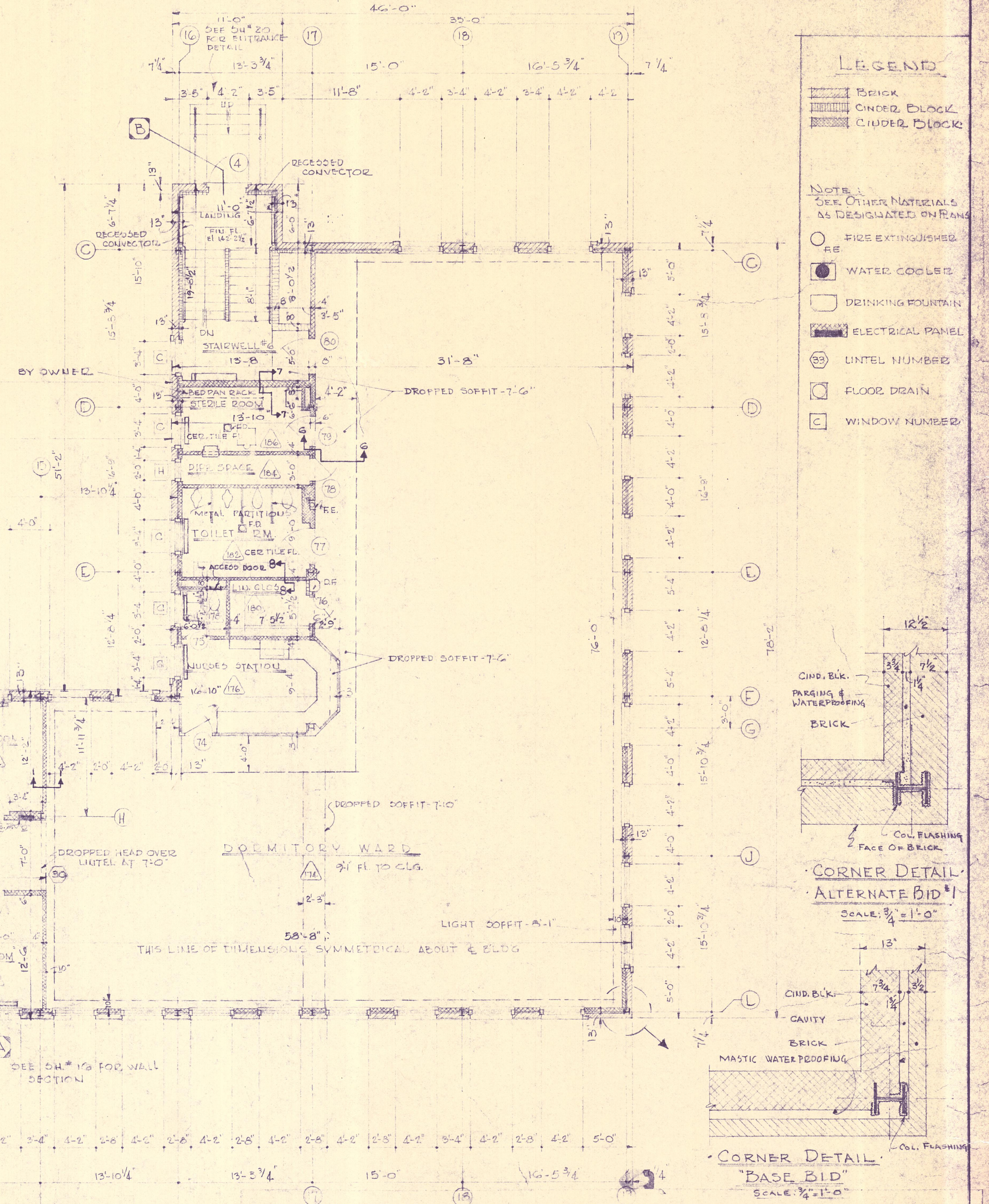
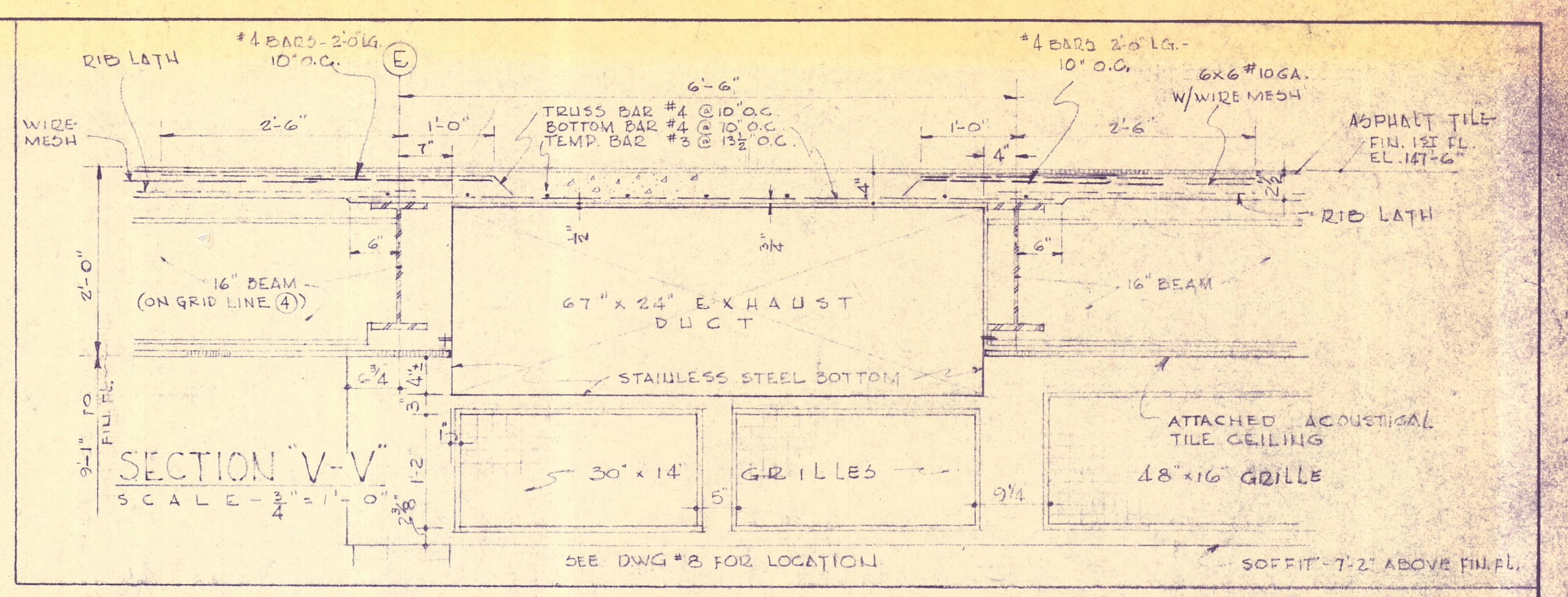


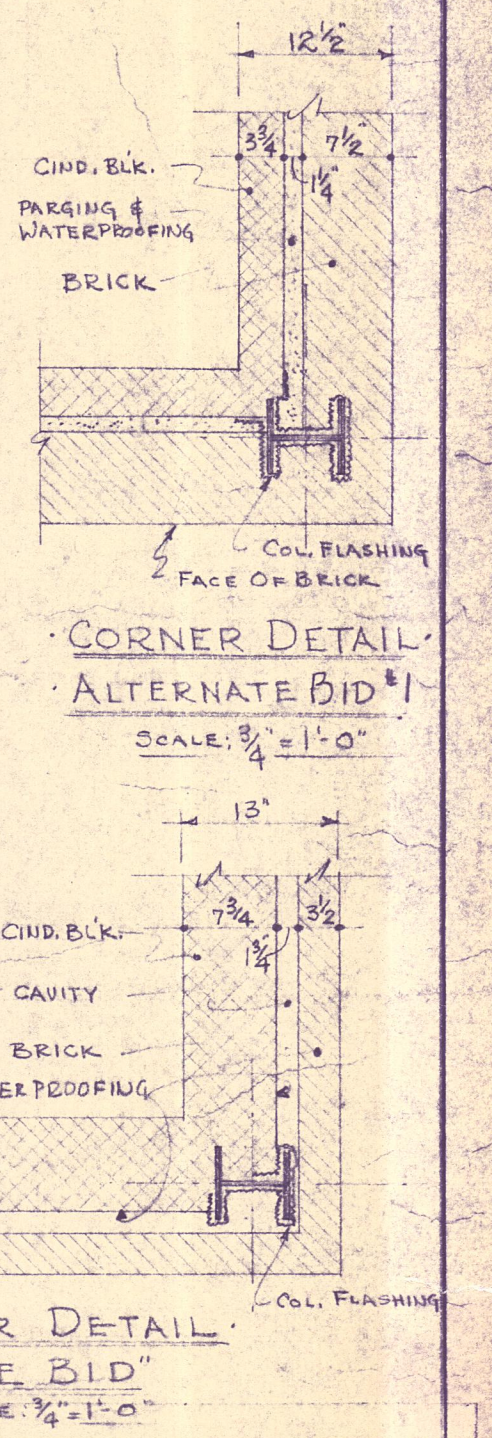
### FIRST FLOOR DOOR SCHEDULE

NO.	FRAME SIZE	DOOR TYPE	DOOR STYLE	FRAME	LOCATION	NO.	FRAME SIZE	DOOR TYPE	DOOR STYLE	FRAME	LOCATION
1	2-3'0" x 7'-0"	1 1/4" STEEL	FLUSH GLAZED TRANSPARENT OVER	STEEL	150 TO EXT.	80	3'-0" x 7'-0"	KAL.	FLUSH GLAZED	STEEL	174 TO STAIR 6
2	3'-0" x 7'-0"	1 1/4" STEEL	FLUSH GLAZED TRANSPARENT OVER	STEEL	STAIR 6 TO EXT.	81	3'-0" x 7'-0"	1 1/4" WOOD	FLUSH	STEEL	150 TO 152
3	3'-0" x 7'-0"	1 1/4" STEEL	FLUSH GLAZED TRANSPARENT OVER	STEEL	STAIR 4 TO EXT.	82	3'-0" x 7'-0"	1 1/4" WOOD	FLUSH	STEEL	152 TO 153
4	3'-0" x 7'-0"	1 1/4" STEEL	FLUSH GLAZED TRANSPARENT OVER	STEEL	STAIR 6 TO EXT.	83	3'-0" x 7'-0"	1 1/4" WOOD	FLUSH-LOUVER	STEEL	153 TO 155
60	3'-0" x 7'-0"	KAL.	FLUSH GLAZED	STEEL	150 TO STAIR 5	84	3'-6" x 7'-0"	1 1/4" WOOD	FL-GL-LOUVER	STEEL	153 TO 157
61	2'-6" x 7'-0"	1 1/4" WOOD	FLUSH	STEEL	150 TO 151	85	3'-0" x 7'-0"	1 1/4" WOOD	FLUSH-LOUVER	STEEL	153 TO 157
62	ELEVATOR	BY OTHERS				86	5'-0" x 7'-0"	OPENING			153 TO 151
63	3'-0" x 7'-0"	1 1/4" WOOD	FLUSH GLAZED	STEEL	150 TO 152	87	3'-0" x 7'-0"	1 1/4" WOOD	FLUSH GLAZED	STEEL	153 TO 153
64	3'-0" x 7'-0"	1 1/4" WOOD	FLUSH	STEEL	150 TO 154	88	3'-0" x 7'-0"	1 1/4" WOOD	FLUSH GLAZED	STEEL	153 TO 155
65	3'-0" x 7'-0"	1 1/4" WOOD	FLUSH-LOUVER	STEEL	154 TO 156	89	3'-0" x 7'-0"	1 1/4" WOOD	FLUSH GLAZED	STEEL	153 TO 157
66	3'-6" x 7'-0"	1 1/4" WOOD	FL-GL-LOUVER	STEEL	154 TO 153	90	3'-0" x 7'-0"	1 1/4" WOOD	FLUSH GLAZED	STEEL	153 TO 157
67	3'-0" x 7'-0"	1 1/4" WOOD	FLUSH-LOUVER	STEEL	154 TO 150	91	3'-0" x 7'-0"	1 1/4" WOOD	FLUSH GLAZED	STEEL	153 TO 171
68	5'-0" x 7'-0"	OPENING				92	3'-0" x 7'-0"	1 1/4" WOOD	FLUSH GLAZED	STEEL	153 TO 175
69	3'-0" x 7'-0"	1 1/4" WOOD	FLUSH GLAZED	STEEL	154 TO 154	93	2'-4" x 7'-0"	1 1/4" WOOD	FLUSH	STEEL	175 TO 177
70	3'-0" x 7'-0"	1 1/4" WOOD	FLUSH GLAZED	STEEL	154 TO 154	94	2'-6" x 7'-0"	1 1/4" WOOD	FLUSH	STEEL	173 TO 179
71	3'-0" x 7'-0"	1 1/4" WOOD	FLUSH GLAZED	STEEL	154 TO 158	95	3'-0" x 7'-0"	1 1/4" WOOD	FL-GL-LOUVER	STEEL	173 TO 181
72	3'-0" x 7'-0"	1 1/4" WOOD	FLUSH GLAZED	STEEL	154 TO 170	96	2'-4" x 7'-0"	1 1/4" WOOD	FLUSH	STEEL	173 TO 183
73	3'-0" x 7'-0"	1 1/4" WOOD	FLUSH GLAZED	STEEL	154 TO 172	97	3'-0" x 7'-0"	1 1/4" WOOD	FL-GL-LOUVER	STEEL	173 TO 185
74	3'-0" x 7'-0"	1 1/4" WOOD	FLUSH GLAZED	STEEL	174 TO 176	98	3'-0" x 7'-0"	KAL.	FLUSH GLAZED	STEEL	173 TO STAIR 4
75	2'-4" x 7'-0"	1 1/4" WOOD	FLUSH	STEEL	176 TO 178	99	3'-0" x 7'-0"	KAL.	FLUSH GLAZED	STEEL	173 TO 187
76	2'-6" x 7'-0"	1 1/4" WOOD	FLUSH	STEEL	174 TO 180	100	3'-0" x 7'-0"	1 1/4" WOOD	FLUSH GLAZED	STEEL	187 TO 187
77	3'-6" x 7'-0"	1 1/4" WOOD	FL-GL-LOUVER	STEEL	174 TO 182	101	3'-0" x 7'-0"	1 1/4" WOOD	FLUSH	STEEL	187 TO 191
78	2'-4" x 7'-0"	1 1/4" WOOD	FLUSH	STEEL	174 TO 184	102	3'-0" x 7'-0"	WOL METAL CLASH A	FLUSH	STEEL	187 TO EXIST.
79	3'-0" x 7'-0"	1 1/4" WOOD	FL-GL-LOUVER	STEEL	174 TO 186	103	2'-4" x 7'-0"	1 1/4" WOOD	FLUSH	STEEL	187 TO 187 A
						104	2'-4" x 7'-0"	1 1/4" WOOD	FLUSH GLAZED	STEEL	191 TO 191 A

**NOTE:**  
 BASE BID - EXT. WALL THICKNESS AS SHOWN  
 ALT. BID #1 - EXT. WALL THICKNESS - 12 1/2"  
 SEE SHEET 12-A FOR WALL BUILD-UP



- #### LEGEND
- BRICK
  - CHIMNEY BLOCK
  - CINDER BLOCK
  - FIRE EXTINGUISHER
  - WATER COOLER
  - DRINKING FOUNTAIN
  - ELECTRICAL PANEL
  - UNITE NUMBER
  - FLOOR DRAIN
  - WINDOW NUMBER



- Notes:**
- ALL WINDOWS ON FIRST FLOOR ARE TYPE 'A' UNLESS OTHERWISE NOTED.
  - SEE DWG. K-5 FOR SERVING RM. CASEWORK & EQUIPMENT
  - SEE SHEETS W-1 THRU W-4 FOR LOCATION OF ACCESS PANELS TO DUCT WORK.
  - PROVIDE CONTRACTION JOINT IN CONCRETE FLOORS EVERY 25'-0" TO 30'-0". LOCATE ON CENTER OF BEAM JOINT OR BEAM IN 1st & 2nd STORIES. JOINTS TO BE 25'-0" O.C. IN CORRIDORS
  - ALL CHIMNEY BLOCK WALLS TO HAVE EXPANSION JOINTS EVERY 16'-0" TO 20'-0" AT DOOR HEADS OR BETWEEN.

PROJECT REVISED - Nov. 2, 1959

APPROVED FOR DEPT. OF HEALTH & WELFARE	APPROVED FOR DEPT. OF INSURANCE
BY: _____	BY: _____
TITLE: _____	TITLE: _____
DATE: _____	DATE: _____

APPROVED FOR BUREAU OF PUBLIC IMPROVEMENTS		APPROVED FOR DEPT. OF INST. SERVICES	
BY: _____	DIRECTOR: _____	DATE: _____	DATE: _____
<b>STATE OF MAINE</b> TITLE: PATIENTS BUILDING - BANGOR STATE HOSPITAL LOCATION: BANGOR, MAINE TITLE THIS DWG: <b>FIRST FLOOR PLAN</b>			
ARCHT. SEAL	DRAWN BY: JEL. N.M.	CHECKED BY: G.E. W.S.	PROJECT NO: 1221
			SHEET NO: 9
			OF 28
CROWELL HIGGINS & WEBSTER architects & engineers 6 State Street Bangor, Maine		REVISIONS NO. DATE DESCRIPTION APPROV'D SCALE DATE 1 Nov. 2/59	