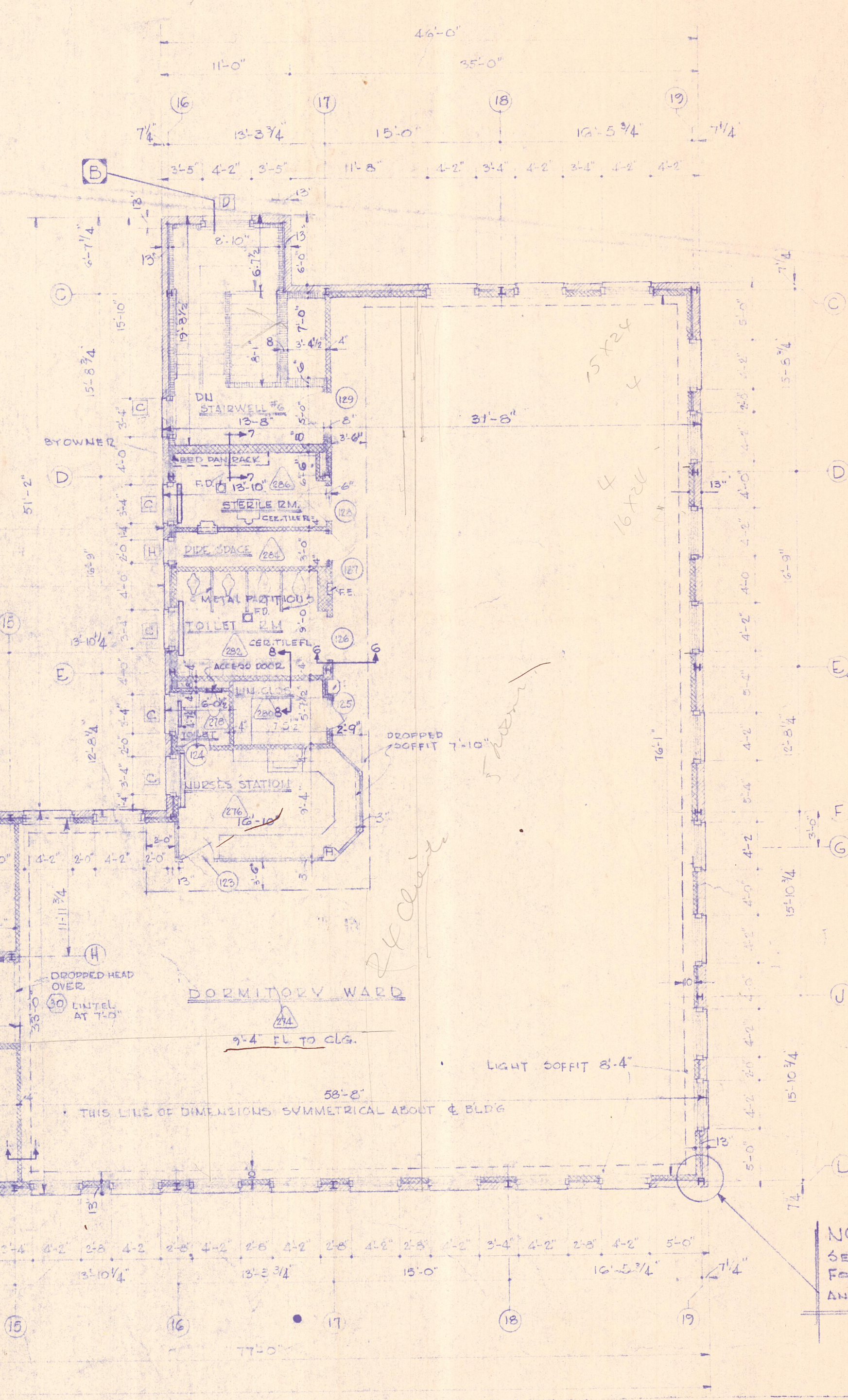
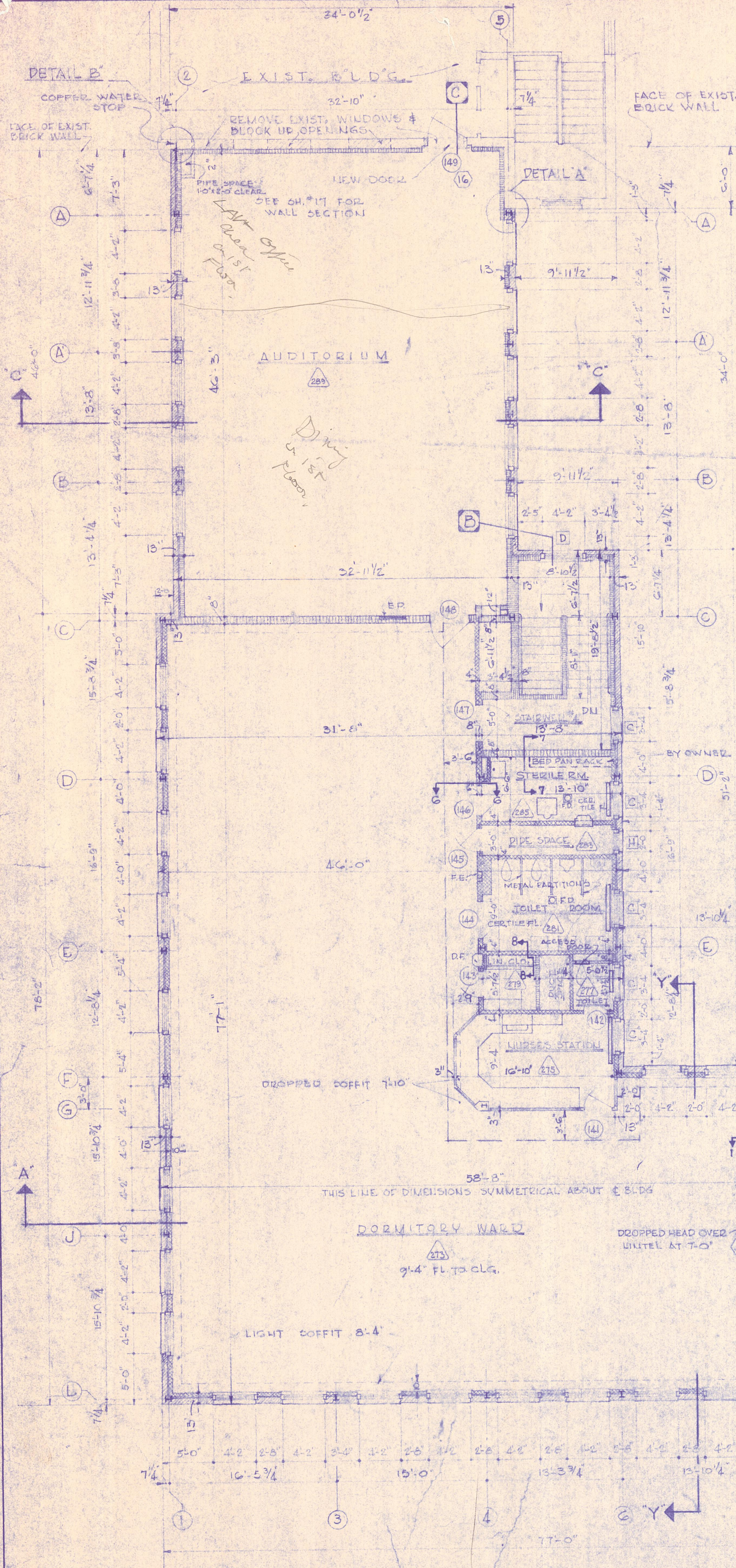
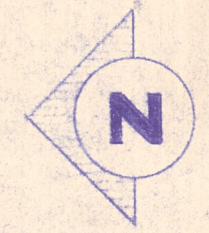


SECOND FLOOR DOOR SCHEDULE

No.	FRAME SIZE	DOOR TYPE	DOOR STYLE	FRAME	LOCATION	No.	FRAME SIZE	DOOR TYPE	DOOR STYLE	FRAME	LOCATION
110	3'-10" x 7'-0"	KAL	FLUSH-GLAZED	STEEL	250 TO STAIRS	131	3'-10" x 7'-0"	1 1/4" WOOD	FLUSH	STEEL	230 TO 253
111		ELEVATOR	BY OWNER			132	3'-10" x 7'-0"	1 1/4" WOOD	FLUSH-LOUVER	STEEL	253 TO 255
112	3'-0" x 7'-0"	1 1/4" WOOD	FLUSH-GLAZED	STEEL	250 TO 252	133	3'-0" x 7'-0"	1 1/4" WOOD	FLUSH-LOUVER	STEEL	253 TO 259
113	3'-10" x 7'-0"	1 1/4" WOOD	FLUSH	STEEL	250 TO 254	134	3'-0" x 7'-0"	1 1/4" WOOD	FL-GL-LOUVER	STEEL	253 TO 257
114	3'-10" x 7'-0"	1 1/4" WOOD	FLUSH-LOUVER	STEEL	254 TO 256	135	3'-10" x 7'-0"	1 1/4" WOOD	FLUSH-GLAZED	STEEL	253 TO 263
115	3'-0" x 7'-0"	1 1/4" WOOD	FLUSH-LOUVER	STEEL	254 TO 250	136	5'-0" x 7'-0"	OPENING			258 TO 261
116	3'-0" x 7'-0"	1 1/4" WOOD	FL-GL-LOUVER	STEEL	254 TO 258	137	3'-10" x 7'-0"	1 1/4" WOOD	FLUSH-GLAZED	STEEL	253 TO 267
117	3'-10" x 7'-0"	1 1/4" WOOD	FLUSH-GLAZED	STEEL	254 TO 264	138	3'-10" x 7'-0"	1 1/4" WOOD	FLUSH-GLAZED	STEEL	253 TO 263
118	5'-0" x 7'-0"	OPENING			254 TO 262	139	3'-10" x 7'-0"	1 1/4" WOOD	FLUSH-GLAZED	STEEL	263 TO 271
119	3'-10" x 7'-0"	1 1/4" WOOD	FLUSH-GLAZED	STEEL	254 TO 265	140	3'-10" x 7'-0"	1 1/4" WOOD	FLUSH-GLAZED	STEEL	253 TO 269
120	3'-10" x 7'-0"	1 1/4" WOOD	FLUSH-GLAZED	STEEL	254 TO 266	141	3'-0" x 7'-0"	1 1/4" WOOD	FLUSH-GLAZED	STEEL	273 TO 275
121	3'-10" x 7'-0"	1 1/4" WOOD	FLUSH-GLAZED	STEEL	254 TO 272	142	2'-4" x 7'-0"	1 1/4" WOOD	FLUSH	STEEL	275 TO 277
122	3'-10" x 7'-0"	1 1/4" WOOD	FLUSH-GLAZED	STEEL	254 TO 270	143	2'-0" x 7'-0"	1 1/4" WOOD	FLUSH	STEEL	273 TO 279
123	3'-0" x 7'-0"	1 1/4" WOOD	FLUSH-GLAZED	STEEL	274 TO 276	144	3'-0" x 7'-0"	1 1/4" WOOD	FL-GL-LOUVER	STEEL	273 TO 281
124	2'-4" x 7'-0"	1 1/4" WOOD	FLUSH	STEEL	276 TO 278	145	2'-4" x 7'-0"	1 1/4" WOOD	FLUSH	STEEL	275 TO 283
125	2'-2" x 7'-0"	1 1/4" WOOD	FLUSH	STEEL	274 TO 280	146	3'-0" x 7'-0"	1 1/4" WOOD	FL-GL-LOUVER	STEEL	275 TO 285
126	3'-0" x 7'-0"	1 1/4" WOOD	FL-GL-LOUVER	STEEL	274 TO 282	147	3'-10" x 7'-0"	KAL	FLUSH-GLAZED	STEEL	278 TO STAIRS 4
127	2'-4" x 7'-0"	1 1/4" WOOD	FLUSH	STEEL	274 TO 284	148	3'-10" x 7'-0"	HOL METAL CLASS A	FLUSH	STEEL CLASS A	289 TO EXIST BLDG
128	3'-0" x 7'-0"	1 1/4" WOOD	FL-GL-LOUVER	STEEL	274 TO 286	149	3'-10" x 7'-0"	HOL METAL CLASS A	FLUSH	STEEL CLASS A	289 TO EXIST BLDG
129	3'-10" x 7'-0"	KAL	FLUSH-GLAZED	STEEL	274 TO STAIRS 5	150	2'-8" x 7'-0"	KAL	FLUSH	STEEL	280 TO EXIST BLDG

NOTE:  
 BASE BID - EXTERIOR WALL THICKNESS AS SHOWN  
 ALT. BID #1 - EXTERIOR WALL THICKNESS - 12 1/2"  
 SEE SHEET 12-A FOR WALL BUILD-UP



- LEGEND
- BRICK
  - CINDER BLOCK
  - CINDER BLOCK
- NOTE: SEE OTHER MATERIALS AS DESIGNATED ON PLANS.
- FIRE EXTINGUISHER
  - WATER COOLER
  - DRINKING FOUNTAIN
  - ELECTRICAL PANEL
  - LINTEL NUMBER
  - FLOOR DRAIN
  - WINDOW NUMBER

- NOTE:
1. ALL WINDOWS ON SECOND FLOOR ARE TYPE 'A' UNLESS OTHERWISE NOTED.
  2. SEE DWG. K-5 FOR SERVING ROOM CASEWORK & EQUIPMENT.
  3. SEE SHEETS H-1 THRU H-4 FOR LOCATION OF ACCESS PANELS TO DUCTWORK.
  4. PROVIDE CONTRACTION JOINT IN CONCRETE FLOORS EVERY 20'-0" TO 20'-0". LOCATE ON CENTER OF BEAM JOINT OR BEAM IN 1ST & 2ND STORIES. JOINTS TO BE 25'-0" O.C. IN CORRIDORS.
  5. ALL CINDER BLOCK WALLS TO HAVE EXPANSION JOINTS EVERY 10'-0" TO 20'-0" - AT DOOR HEADS OR BETWEEN

NOTE!  
 SEE DETAILS SHEET #9 FOR BOTH BASE BID AND ALT. BID #1.

PROJECT REVISED NOV. 2, 1979

APPROVED FOR DEPT. OF HEALTH & WELFARE  
 DEPT. OF INSURANCE

APPROVED FOR BUREAU OF PUBLIC IMPROVEMENTS		APPROVED FOR DEPT. OF INST. SERVICES	
BY	DATE	BY	DATE
<b>STATE OF MAINE</b> TITLE PATIENTS BUILDING - BANGOR STATE HOSPITAL LOCATION BANGOR, MAINE TITLE THIS DWG. <b>SECOND FLOOR PLAN</b>			
ARCHT'S	SEAL	PROJECT NO.	1221
DRAWN BY	SCALE	SHEET NO.	10
CHECKED BY	DATE	OF 28	
CROWELL LANCASTER HIGGINS & WEBSTER architects & engineers 6 state street bangor, maine			
NO. DATE		DESCRIPTION	
1		REVISIONS	
2		NOV. 2, 1979	