

DOROTHEA DIX PSYCHIATRIC CENTER

POOLER PAVILION DEMOLITION

DEMOLITION DOCUMENTS
FEBRUARY 21, 2024

LIST OF DRAWINGS

- G00-1 COVER SHEET
- ARCHITECTURAL DRAWINGS
 - A00-1 ABBREVIATIONS AND LEGENDS
 - A01-1 SITE CONTEXT DIAGRAMS & REFERENCE PHOTOS
 - A05-0 DEMOLITION GROUND FLOOR PLAN
 - A05-1 DEMOLITION FIRST FLOOR PLAN
 - A05-2 DEMOLITION SECOND FLOOR PLAN
 - A05-3 DEMOLITION ROOF PENTHOUSE PLAN
 - A05-4 DEMOLITION ROOF PLAN

Harriman

DOROTHEA DIX
PSYCHIATRIC CENTER

POOLER PAVILION
DEMOLITION

BANGOR, MAINE

Harriman Project No. 23134



DEMOLITION DOCUMENTS

FEBRUARY 21, 2024

Revision Date	Revision Description

Drawn by: KLS

COVER SHEET

G00-1

CONTRACT DRAWING ABBREVIATIONS

ABBRV	TERM	ABBRV	TERM
A/C	AIR CONDITIONING	HB	HOSE BIB
AB	ANCHOR BOLT	HD	HUB DRAIN
AC	ACOUSTICAL	HM	HOLLOW METAL
ACT	ACOUSTICAL TILE	HORIZ	HORIZONTAL
AD	ACCESS DOOR	HP	HIGH POINT
ADJ	ADJUSTABLE	HSS	HOLLOW STRUCTURAL SECTION
AFF	ABOVE FINISH FLOOR	HT	HEIGHT
AFG	ABOVE FINISH GRADE	HTG	HEATING
AL	ALUMINUM	HVAC	HEATING - VENTILATING - AIR CONDITIONING
ALT	ALTERNATE	HYD	HYDRANT
AP	ACCESS PANEL	ID	INSIDE DIAMETER
APX	APPROXIMATE	INS	INSULATE (D) (ION)
ARCH	ARCHITECT (URAL)	INT	INTERIOR
AVB	AIR VAPOR BARRIER	INV	INVERT
BD	BOARD	JC	JANITOR'S CLOSET
BIT	BITUMINOUS	JT	JOINT
BJ	BAR JOIST	KIT	KITCHEN
BLDG	BUILDING	LAB	LABORATORY
BLKG	BLOCKING	LAM	LAMINATE (D)
BM	BENCH MARK	LAV (L)	LAVATORY
BOD	BOTTOM OF DECK	LB (S)	POUNDS
BOT	BOTTOM	LD	LINEAR DIFFUSER
BP	BASE PLATE	LF	LINEAL FEET
BSMT	BASEMENT	LG	LONG
BTU	BRITISH THERMAL UNIT	LTG	LIGHTING
CAB	CABINET	LTL	LINTEL
CB	CATCHBASIN	LW	LIMIT OF WORK
CD	CEILING DIFFUSER	M	METER (S)
CEM	CEMENT (TIOUS)	MAS	MASONRY
CER	CERAMIC	MAT	MATERIAL
CF	CUBIC FEET	MAX	MAXIMUM
CG	CORNER GRILLE	MECH	MECHANICAL
CHBD	CHALKBOARD	MED	MEDIUM
CHT	CEILING HEIGHT	MET	METAL
CI	CONTINUOUS INSULATION	MFR	MANUFACTURE (R)
CJT	CONTROL JOINT	MH	MANHOLE
CL	CLOSET	MIN	MINIMUM
CLG	CEILING	MISC	MISCELLANEOUS
CMPST	COMPOSITE	MO	MASONRY OPENING
CMU	CONCRETE MASONRY UNIT	MR	MOP RECEPTOR
CO	CLEANOUT	MT	METAL THRESHOLD
COL	COLUMN	MTD	MOUNTED
CONC	CONCRETE	N	NORTH
CONN	CONNECT	NA	NOT APPLICABLE
CONST	CONSTRUCTION	NIC	NOT IN CONTRACT
CONT	CONTINUE (OUS)	No	NUMBER
CONTR	CONTRACT (OR)	NTS	NOT TO SCALE
CORR	CORRUGATED	OC	ON CENTER (S)
CPT	CARPET (ED)	OD	OUTSIDE DIAMETER
CT	CERAMIC TILE	OFF	OFFICE
CUH	CABINET UNIT HEATER	OH	OVERHEAD
CV	CONVECTOR	OPG	OPENING
CW	COLD WATER	OPH	OPPOSITE HAND
CY	CUBIC YARD	OPP	OPPOSITE
DF	DRINKING FOUNTAIN	P	PLATE
DG	DOOR GRILLE	PAR	PARALLEL
DH	DOUBLE HUNG	PERP	PERPENDICULAR
DIA	DIAMETER	PFN	PREFINISHED
DIAG	DIAGONAL	PL	PROPERTY LINE
DIM	DIMENSION	PLAM	PLASTIC LAMINATE
DIV	DIVISION	PLUMB	PLUMBING
DN	DOWN	PNL	PANEL
DTL	DETAIL	PNT	PAINT (ED)
DWG	DRAWING	PT	PRESSURE TREATED
E	EAST	PTN	PARTITION
EB	EXPANSION BOLT	PVC	POLYVINYL CHLORIDE
EF	EXHAUST FAN	PWD	PLYWOOD
EIFS	EXTERIOR INSULATED FINISH SYSTEM	QT	QUARRY TILE
EJ	EXPANSION JOINT	R	RISER
EL	ELEVATION (S)	RAD	RADIUS
ELEC	ELECTRIC (AL)	RB	RUBBER BASE
EP	ELECTRIC PANEL	RD	ROOF DRAIN
EQ	EQUAL	REF	REFERENCE
ER	EXHAUST REGISTER	REFR	REFRIGERATOR
ES	EACH SIDE	REQ	REQUIRE (D)
EST	ESTIMATE	REV	REVISION (S)
EWC	ELECTRIC WATER COOLER	RL	ROOF LEADER
EXG	EXISTING	RM	ROOM
EXP	EXPANSION	RO	ROUGH OPENING
EXT	EXTERIOR	ROW	RIGHT OF WAY
FA	FIRE ALARM	S	SOUTH
FAI	FRESH AIR INTAKE	SAB	SOUND ATTENUATING BATTS
FC	FLEXIBLE CONNECTION	SD	STORM DRAIN
FCO	FLOOR CLEANOUT	SDMH	STORM DRAIN MANHOLE
FD	FLOOR DRAIN	SEC	SECTION
FDTN	FOUNDATION	SHT	SHEET
FE	FIRE EXTINGUISHER	SIM	SIMILAR
FEC	FIRE EXTINGUISHER CABINET	SK	SINK
FIN	FINISH (ED)	SMU	SOLID MASONRY UNIT
FLG	FLASHING	SPEC	SPECIFICATION (S)
FLR	FLOOR (ING)	SQ	SQUARE
FO	FACE OF	SS	STAINLESS STEEL
FOC	FACE OF CONCRETE	SSK	SERVICE SINK
FOS	FACE OF STUD	STD	STANDARD
FRP	FIBERGLASS REINFORCED PANEL	STL	STEEL
FTG	FOOTING	STOR	STORAGE
GA	GAGE, GAUGE	STRUC	STRUCTURAL
GALV	GALVANIZED	SYM	SYMMETRY (ICAL)
GB	GRAB BAR	SYS	SYSTEM
GC	GENERAL CONTRACT (OR)		
GL	GLASS		
GPDW	GYPSSUM DRY WALL		

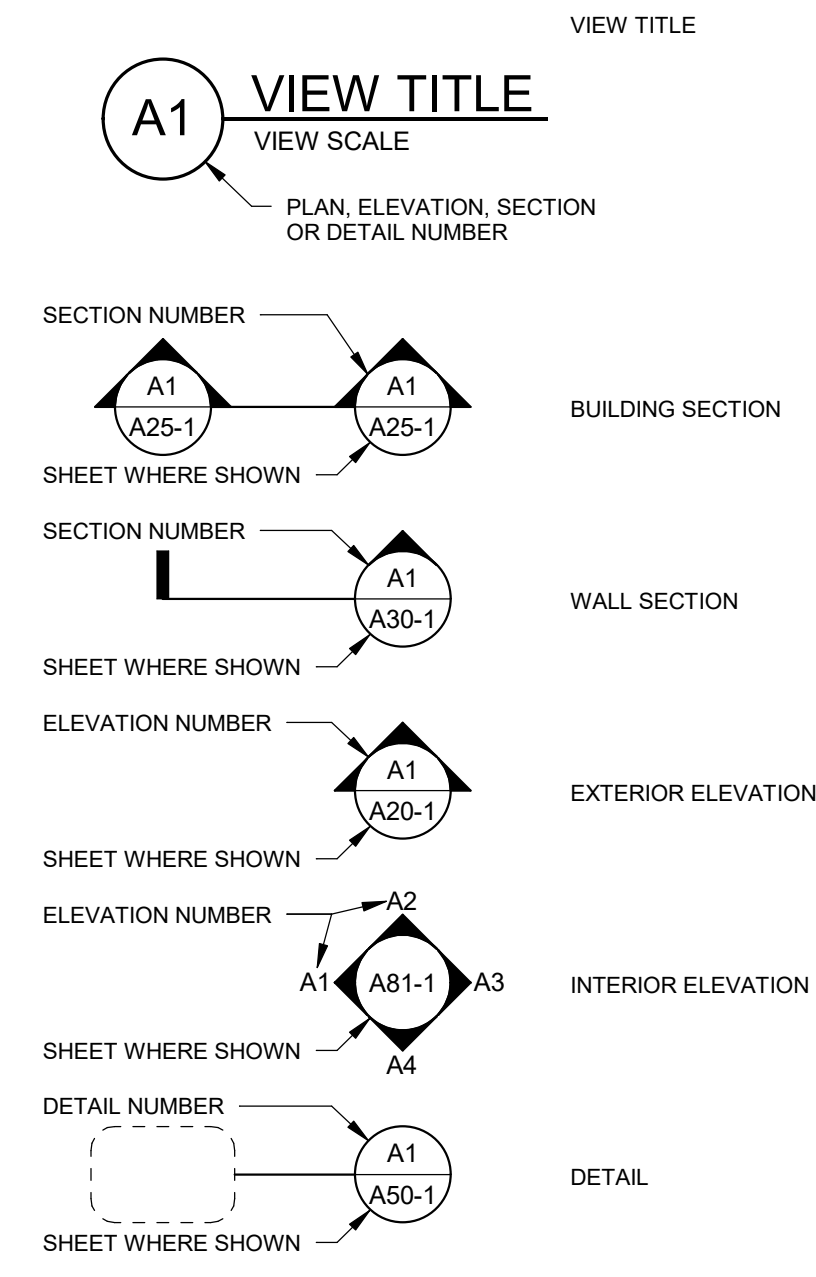
ABBRV	TERM
T	TREAD
T&G	TONGUE & GROOVE
TD	TRENCH DRAIN
TEL	TELEPHONE
THK	THICK (NESS)
TKBD	TACKBOARD
TOC	TOP OF CONCRETE
TOF	TOP OF FOOTING
TOS	TOP OF STEEL
TPTN	TOILET PARTITION
TV	TELEVISION
TYP	TYPICAL
UH	UNIT HEATER
UNO	UNLESS NOTED OTHERWISE
UR	URINAL
UV	UNIT VENTILATOR
V	VENT
VB	VINYL BASE
VCT	VINYL COMPOSITION TILE
VERT	VERTICAL
VF	VINYL FABRIC
VTR	VENT THRU ROOF
W	WEST, WIDTH, WIDE
WI	WITH
W/O	WITHOUT
WC	WATER CLOSET
WCH	WATER CLOSET HANDICAP
WCO	WALL CLEANOUT
WD	WOOD
WG	WALL GRILLE
WH	WALL HUNG
WIN	WINDOW
WP	WORKING POINT
WWF	WELDED WIRE FABRIC

SYMBOLS USED AS ABBREVIATIONS

L	ANGLE
C	CENTERLINE
[CHANNEL
ø	DIAMETER
℞	PLATE
□	SQUARE

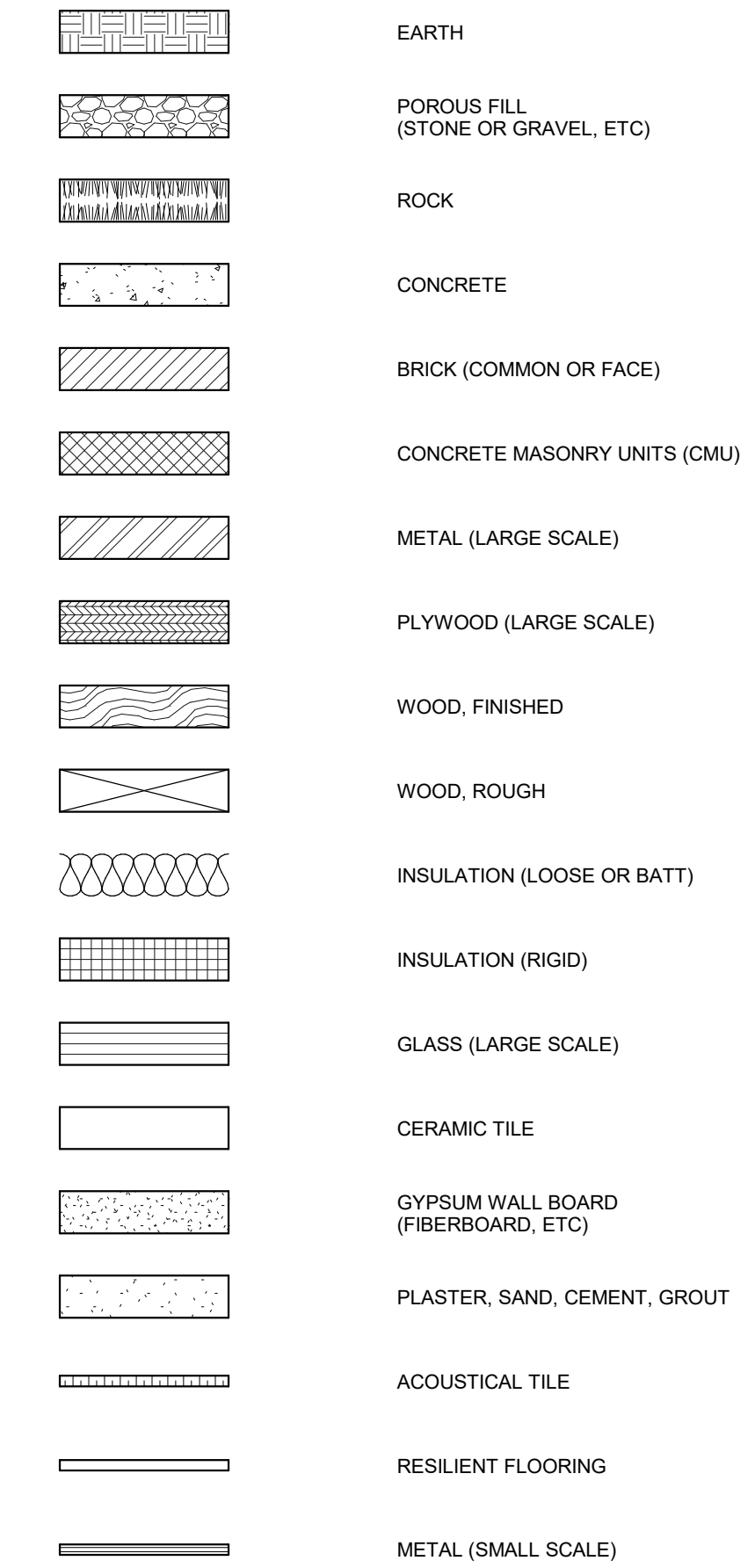
GRAPHIC SYMBOLS

PLAN - SECTION

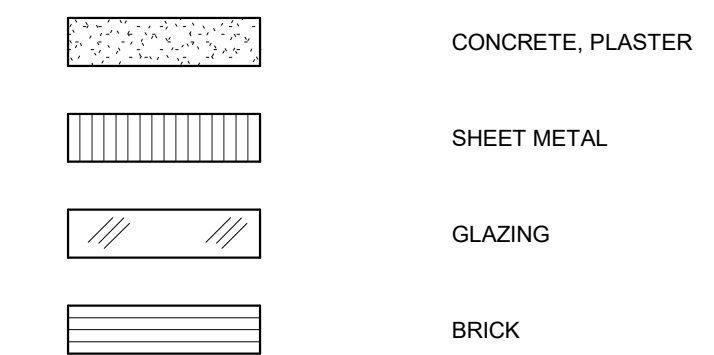


MATERIAL INDICATIONS

PLAN - SECTION

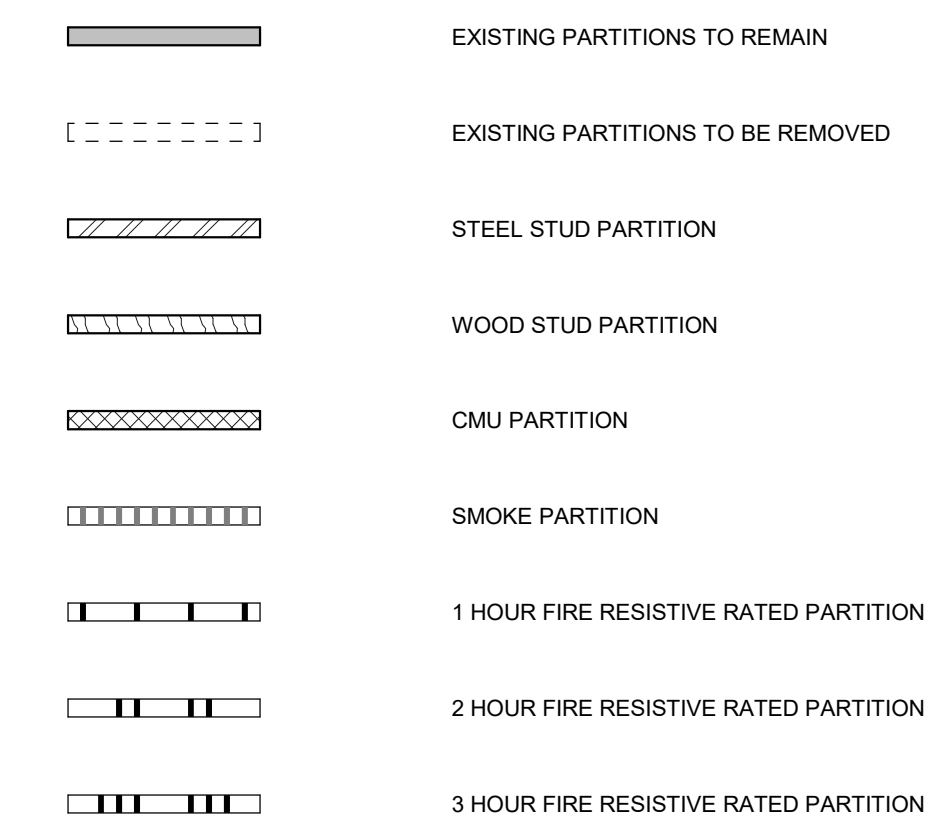


ELEVATIONS



SPECIAL INDICATIONS

PARTITION CONSTRUCTION - PLAN



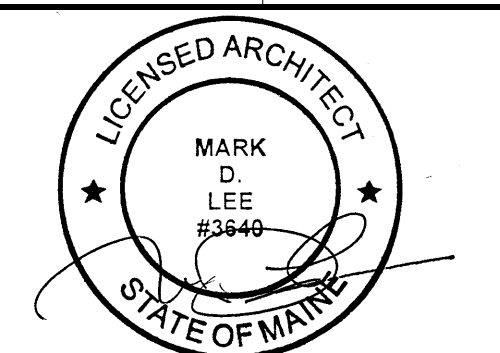
Harriman

DOROTHEA DIX PSYCHIATRIC CENTER

POOLER PAVILION DEMOLITION

BANGOR, MAINE

Harriman Project No. 23134



DEMOLITION DOCUMENTS

FEBRUARY 21, 2024

Revision Date	Revision Description

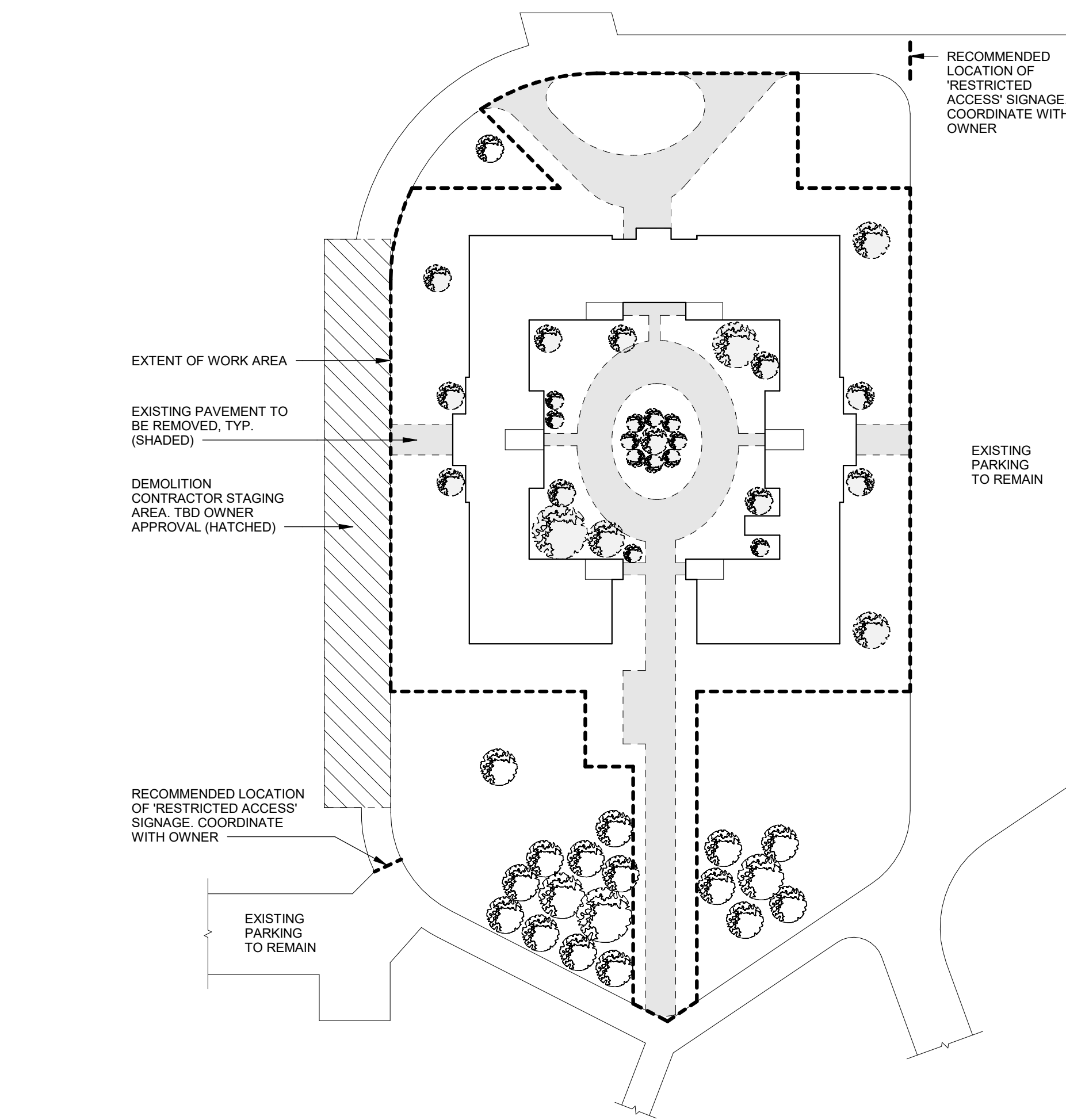
Drawn by: KLS

ABBREVIATIONS AND LEGENDS

A00-1

GENERAL SITE NOTES

- EXISTING PAVEMENT DIAGRAM HAS NOT BEEN FIELD VERIFIED AND IS FOR REFERENCE ONLY.
- CONTRACTOR IS RESPONSIBLE FOR FIELD VERIFICATIONS.
- CONTRACTOR TO NOTIFY OWNER 72 HOURS MIN. PRIOR TO ANY VEHICLE TRAFFIC DISRUPTION.
- CONTRACTOR TO NOTIFY ARCHITECT IF ANY EXISTING UTILITIES ARE FOUND TO BE DIFFERENT THAN SHOWN.
- CONTRACTOR TO PROVIDE PROTECTIVE BARRIERS AROUND WORK AREA TO ENSURE EXISTING BUILDING PERIMETER IS SECURED OUTSIDE OF WORK HOURS.
- CONTRACTOR TO PROVIDE TEMPORARY WORK AREA SIGNAGE TO DIRECT SUBCONTRACTORS AND PUBLIC.
- CONTRACTOR TO PROVIDE IMPACT PROTECTIONS FOR EXISTING MATURE TREES ALONG PERIMETER OF WORK AREA.
- AFTER COMPLETION OF DEMOLITION, SITE FILL & LEVELING, CONTRACTOR TO PROVIDE LOAM & SEED FOR ALL LAWN & FILL AREAS EFFECTED BY SCOPE OF WORK (WITHIN DEFINED WORK AREA) TO MATCH ADJACENT EXISTING GRADES.
- ALL CONTRACTOR PROPOSED CONSTRUCTION TRAFFIC ROUTES, FENCING & TEMPORARY SIGNAGE TO BE PRESENTED AND APPROVED BY THE OWNER PRIOR TO SITE OCCUPATION.
- FIRE SAFETY ACCESS ROUTES TO BE MAINTAINED. ANY SECURED VEHICLE GATES TO INCLUDE KNOX BOX APPROVED BY AUTHORITY HAVING JURISDICTION.



A1 SITE WORK AREA EXTENT DIAGRAM
SCALE: 1" = 60'-0"

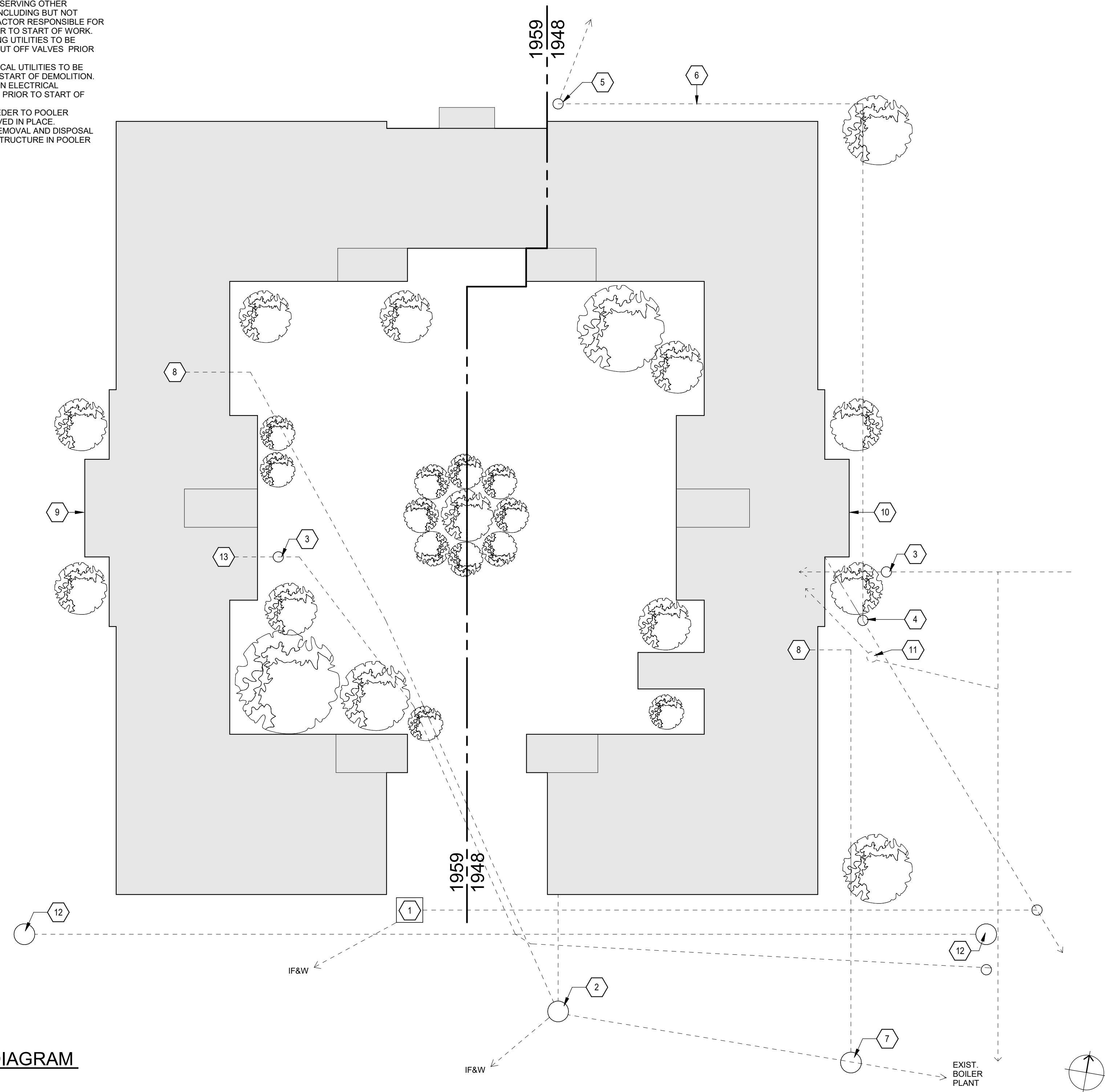
GENERAL UTILITY & MOBILIZATION NOTES

- EXISTING UTILITY DIAGRAM HAS NOT BEEN FIELD VERIFIED AND IS FOR REFERENCE ONLY.
- CONTRACTOR IS RESPONSIBLE FOR FIELD VERIFICATIONS AND DIG-SAFE COORDINATION.
- CONTRACTOR TO NOTIFY OWNER AND UTILITY SERVICE PROVIDER (72) HOURS MIN. PRIOR TO ANY UTILITY SERVICE DISRUPTION.
- CONTRACTOR TO NOTIFY ARCHITECT IF ANY EXISTING UTILITIES ARE FOUND TO BE DIFFERENT THAN SHOWN.
- ACTIVE UTILITY SERVICE CONNECTIONS SERVING OTHER BUILDINGS ON SITE TO BE MAINTAINED INCLUDING BUT NOT LIMITED TO THE IF&W BUILDING. CONTRACTOR RESPONSIBLE FOR IDENTIFYING THESE CONNECTIONS PRIOR TO START OF WORK.
- POOLER PAVILION ASSOCIATED PLUMBING UTILITIES TO BE DISCONNECTED AND CAPPED AT THE SHUT OFF VALVES PRIOR TO START OF DEMOLITION.
- POOLER PAVILION ASSOCIATED ELECTRICAL UTILITIES TO BE DISCONNECTED AND CAPPED PRIOR TO START OF DEMOLITION.
 - CONFIRM EXISTING POOLER PAVILION ELECTRICAL INFRASTRUCTURE IS DE-ENERGIZED PRIOR TO START OF WORK.
 - EXISTING UNDERGROUND 4160V FEEDER TO POOLER PAVILION MUST BE CAPPED AND SAVED IN PLACE.
 - CONTRACTOR RESPONSIBLE FOR REMOVAL AND DISPOSAL OF ALL EXISTING ELECTRICAL INFRASTRUCTURE IN POOLER PAVILION.

SITE CONTEXT KEYNOTES

- ELECTRICAL VAULT HATCH
- STEAM LINE PIT #3 MANHOLE
- SPRINKLER POST INDICATOR VALVE
- CONFIRM ELECTRICAL SPLIT LOCATION
- VERIFY SIZE AND QUANTITY OF CONDUIT IN DUCT BANK FROM TRANSFORMER VAULT AT STEAM PLANT TO POOLER DURING POOLER DEMOLITION.
- MAINTAIN ELECTRICAL ROUTING AROUND BUILDING. VERIFY SIZE AND QUANTITY OF CONDUIT IN DUCT BANK TO IF&W DURING POOLER DEMOLITION.
- STEAM LINE PIT #2 MANHOLE
- APPROX. INTERIOR STEAM LINE CONNECTIONS @ GROUND FLOOR
- ENGRAVED GRANITE DEDICATION BLOCK TO BE SALVAGED & STORED FOR OWNER. SEE FIG. 1
- ENGRAVED MASONRY LINTEL TO BE SALVAGED & STORED FOR OWNER. SEE FIG. 2
- 2" COPPER DOMESTIC WATER LINE
- WATER MAIN SHUT OFF VALVE
- 6" CAST IRON DOMESTIC WATER MAIN

A2 SITE UTILITY DIAGRAM
SCALE: 1" = 20'-0"



Harriman

DOROTHEA DIX
PSYCHIATRIC CENTER

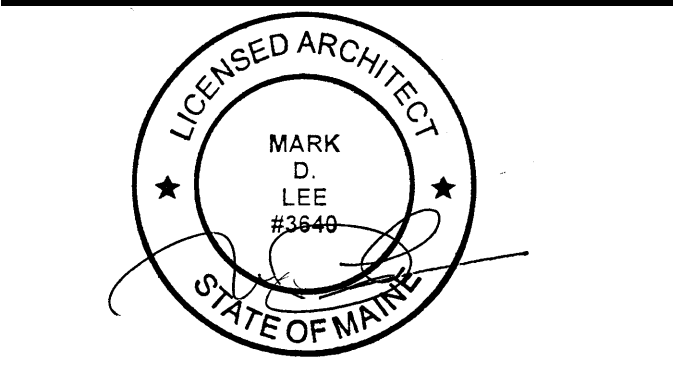
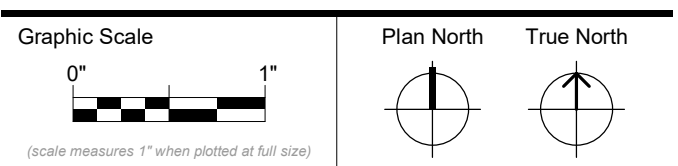
POOLER PAVILION
DEMOLITION

BANGOR, MAINE

Harriman Project No. 23134

GENERAL DEMOLITION NOTES

- ALL WORK TO BE DONE IN COMPLIANCE WITH LOCAL, STATE, AND FEDERAL REGULATIONS, CODES AND STANDARDS; AND MEET THE REQUIREMENTS OF THE AUTHORITIES HAVING JURISDICTION.
- BUILDING TO BE DEMOLISHED IN ITS ENTIRETY. REMOVALS TO INCLUDE ALL FOUNDATIONS, FOOTINGS AND ASSOCIATED CONSTRUCTED SUB GRADE ELEMENTS.
- SEE SITE DEMOLITION NOTES FOR BACKFILLING SCOPE REQUIREMENTS.
- DRAWINGS ARE ILLUSTRATIVE OF EXISTING CONDITIONS FOR SCOPE AND ESTIMATING PURPOSES. CONDITIONS HAVE NOT BEEN FIELD VERIFIED. IT IS THE CONTRACTORS RESPONSIBILITY TO FIELD VERIFY ALL CONDITIONS.
- REMEDIATION OF HAZARDOUS MATERIALS TO BE COMPLETED PRIOR TO DEMOLITION WITH NOTED EXCEPTIONS.
 - ROOFING: SEE HAZARDOUS MATERIALS REPORT
 - ANY HAZARDOUS MATERIALS DISCOVERED DURING DEMOLITION PROCESS SHOULD FOLLOW APPROVED ABATEMENT PROCEDURES AND APPLICABLE LAWS.
- ALL BUILDING PLUMBING UTILITIES TO BE DISCONNECTED AND CAPPED AT THE SHUT OFF VALVES PRIOR TO START OF DEMOLITION.
- TEMPORARY SINGLE POINT POWER AND WATER CONNECTIONS PROVIDED BY OWNER. SEE LOCATION NOTED. CONTRACTOR RESPONSIBLE FOR CODE COMPLIANT DISTRIBUTION BEYOND SINGLE POINT PROVIDED.
- BUILDING UTILITIES LOCATED WITHIN THE PROJECT SCOPE AREA THAT SERVE OTHER BUILDINGS TO BE MAINTAINED. ANY DISRUPTION CAUSED BY THE SCOPE OF WORK IS TO BE COORDINATED WITH OWNER AND UTILITY PROVIDER PRIOR TO ASSOCIATED WORK.
- ANY ASSOCIATED UTILITIES SERVING POOLER FROM DISTRIBUTION THAT ALSO CONNECTS TO OTHER BUILDING IS TO BE DISCONNECTED WITH NO DISRUPTION OF SERVICE TO OTHER BUILDINGS. DISCONNECT WORK TO BE COORDINATED WITH OWNER AND UTILITY PROVIDER PRIOR TO ASSOCIATED WORK.



DEMOLITION DOCUMENTS

FEBRUARY 21, 2024

Revision Date	Revision Description

Drawn by: KLS

SITE CONTEXT DIAGRAMS & REFERENCE PHOTOS



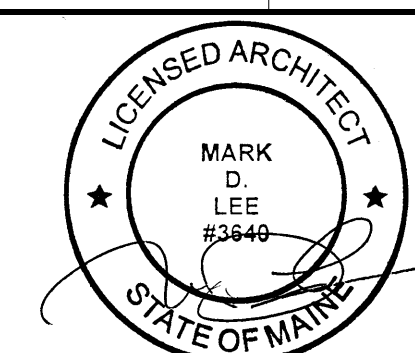
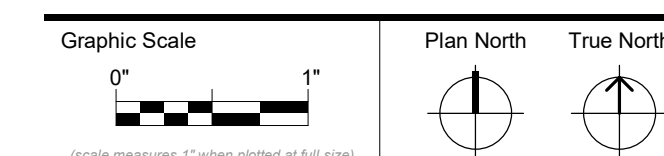
FIG. 1



FIG. 2

GENERAL DEMOLITION NOTES

- ALL WORK TO BE DONE IN COMPLIANCE WITH LOCAL, STATE, AND FEDERAL REGULATIONS, CODES AND STANDARDS; AND MEET THE REQUIREMENTS OF THE AUTHORITIES HAVING JURISDICTION.
- BUILDING TO BE DEMOLISHED IN ITS ENTIRETY. REMOVALS TO INCLUDE ALL FOUNDATIONS, FOOTINGS AND ASSOCIATED CONSTRUCTED SUB GRADE ELEMENTS.
- SEE SITE DEMOLITION NOTES FOR BACKFILLING SCOPE REQUIREMENTS.
- DRAWINGS ARE ILLUSTRATIVE OF EXISTING CONDITIONS FOR SCOPE AND ESTIMATING PURPOSES. CONDITIONS HAVE NOT BEEN FIELD VERIFIED. IT IS THE CONTRACTORS RESPONSIBILITY TO FIELD VERIFY ALL CONDITIONS.
- REMEDICATION OF HAZARDOUS MATERIALS TO BE COMPLETED PRIOR TO DEMOLITION WITH NOTED EXCEPTIONS.
 - ROOFING: SEE HAZARDOUS MATERIALS REPORT
 - ANY HAZARDOUS MATERIALS DISCOVERED DURING DEMOLITION PROCESS SHOULD FOLLOW APPROVED ABATEMENT PROCEDURES AND APPLICABLE LAWS.
- ALL BUILDING PLUMBING UTILITIES TO BE DISCONNECTED AND CAPPED AT THE SHUT OFF VALVES PRIOR TO START OF DEMOLITION.
- TEMPORARY SINGLE POINT POWER AND WATER CONNECTIONS PROVIDED BY OWNER. SEE LOCATION NOTED. CONTRACTOR RESPONSIBLE FOR CODE COMPLIANT DISTRIBUTION BEYOND SINGLE POINT PROVIDED.
- BUILDING UTILITIES LOCATED WITHIN THE PROJECT SCOPE AREA THAT SERVE OTHER BUILDINGS TO BE MAINTAINED. ANY DISRUPTION CAUSED BY THE SCOPE OF WORK IS TO BE COORDINATED WITH OWNER AND UTILITY PROVIDER PRIOR TO ASSOCIATED WORK.
- ANY ASSOCIATED UTILITIES SERVING POOLER FROM DISTRIBUTION THAT ALSO CONNECTS TO OTHER BUILDING IS TO BE DISCONNECTED WITH NO DISRUPTION OF SERVICE TO OTHER BUILDINGS. DISCONNECT WORK TO BE COORDINATED WITH OWNER AND UTILITY PROVIDER PRIOR TO ASSOCIATED WORK.



DEMOLITION DOCUMENTS

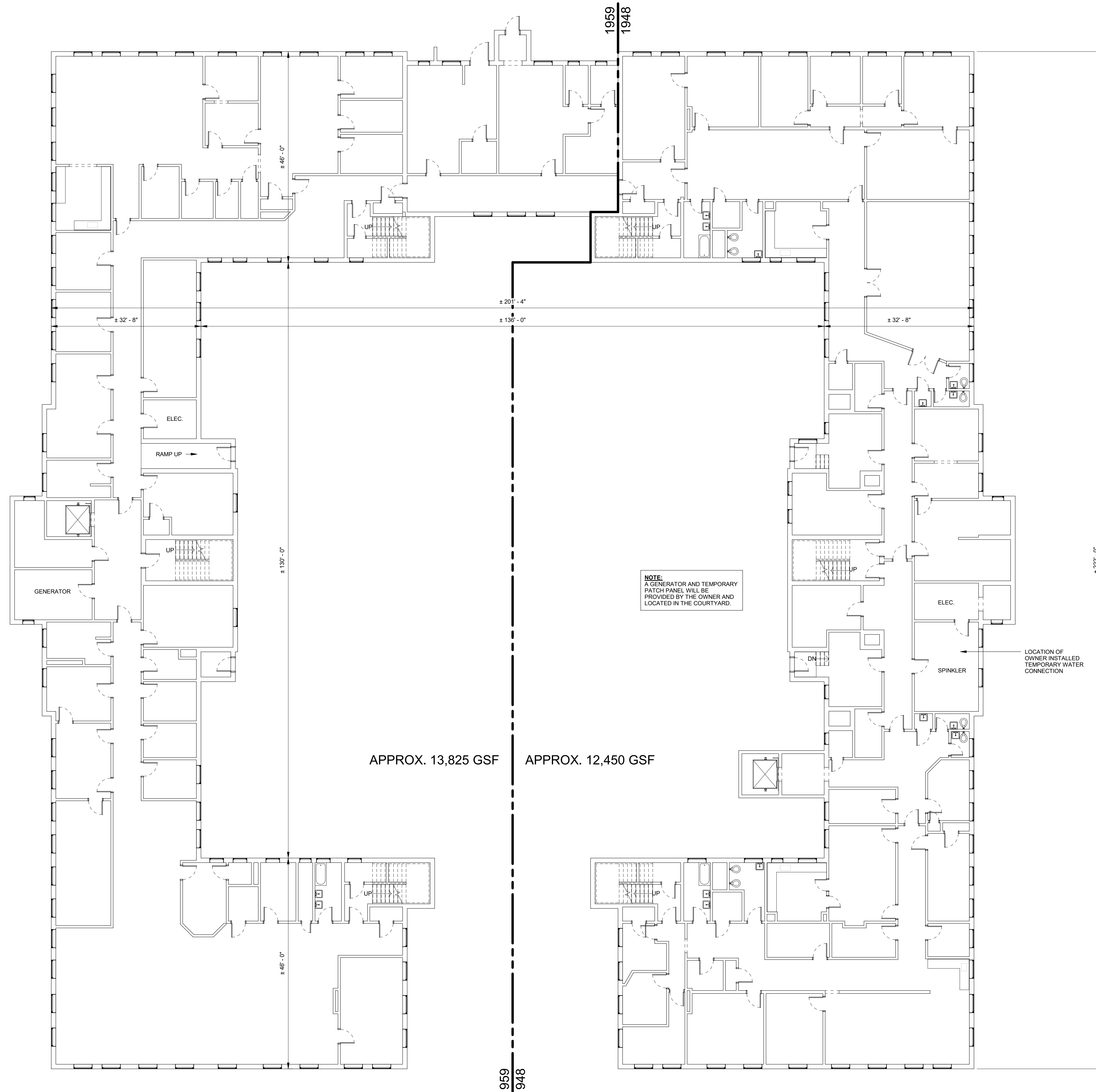
FEBRUARY 21, 2024

Revision Date	Revision Description

Drawn by: KLS

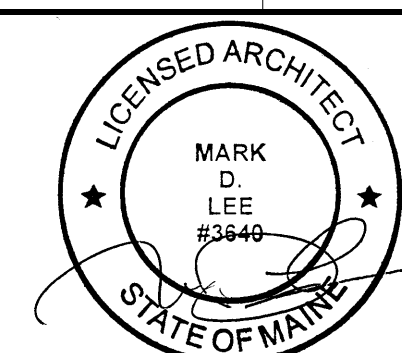
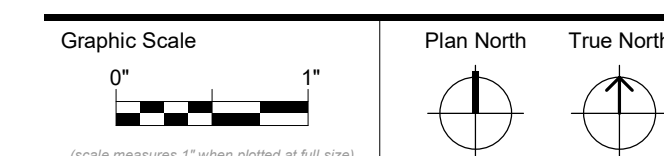
DEMOLITION GROUND FLOOR PLAN

A05-0



GENERAL DEMOLITION NOTES

1. ALL WORK TO BE DONE IN COMPLIANCE WITH LOCAL, STATE, AND FEDERAL REGULATIONS, CODES AND STANDARDS, AND MEET THE REQUIREMENTS OF THE AUTHORITIES HAVING JURISDICTION.
2. BUILDING TO BE DEMOLISHED IN ITS ENTIRETY. REMOVALS TO INCLUDE ALL FOUNDATIONS, FOOTINGS AND ASSOCIATED CONSTRUCTED SUB GRADE ELEMENTS.
3. SEE SITE DEMOLITION NOTES FOR BACKFILLING SCOPE REQUIREMENTS.
4. DRAWINGS ARE ILLUSTRATIVE OF EXISTING CONDITIONS FOR SCOPE AND ESTIMATING PURPOSES. CONDITIONS HAVE NOT BEEN FIELD VERIFIED. IT IS THE CONTRACTORS RESPONSIBILITY TO FIELD VERIFY ALL CONDITIONS.
5. REMEDIATION OF HAZARDOUS MATERIALS TO BE COMPLETED PRIOR TO DEMOLITION WITH NOTED EXCEPTIONS.
 - ROOFING: SEE HAZARDOUS MATERIALS REPORT
 - ANY HAZARDOUS MATERIALS DISCOVERED DURING DEMOLITION PROCESS SHOULD FOLLOW APPROVED ABATEMENT PROCEDURES AND APPLICABLE LAWS.
6. ALL BUILDING PLUMBING UTILITIES TO BE DISCONNECTED AND CAPPED AT THE SHUT OFF VALVES PRIOR TO START OF DEMOLITION.
7. TEMPORARY SINGLE POINT POWER AND WATER CONNECTIONS PROVIDED BY OWNER. SEE LOCATION NOTED. CONTRACTOR RESPONSIBLE FOR CODE COMPLIANT DISTRIBUTION BEYOND SINGLE POINT PROVIDED.
8. BUILDING UTILITIES LOCATED WITHIN THE PROJECT SCOPE AREA THAT SERVE OTHER BUILDINGS TO BE MAINTAINED. ANY DISRUPTION CAUSED BY THE SCOPE OF WORK IS TO BE COORDINATED WITH OWNER AND UTILITY PROVIDER PRIOR TO ASSOCIATED WORK.
9. ANY ASSOCIATED UTILITIES SERVING POOLER FROM DISTRIBUTION THAT ALSO CONNECTS TO OTHER BUILDING IS TO BE DISCONNECTED WITH NO DISRUPTION OF SERVICE TO OTHER BUILDINGS. DISCONNECT WORK TO BE COORDINATED WITH OWNER AND UTILITY PROVIDER PRIOR TO ASSOCIATED WORK.



DEMOLITION DOCUMENTS

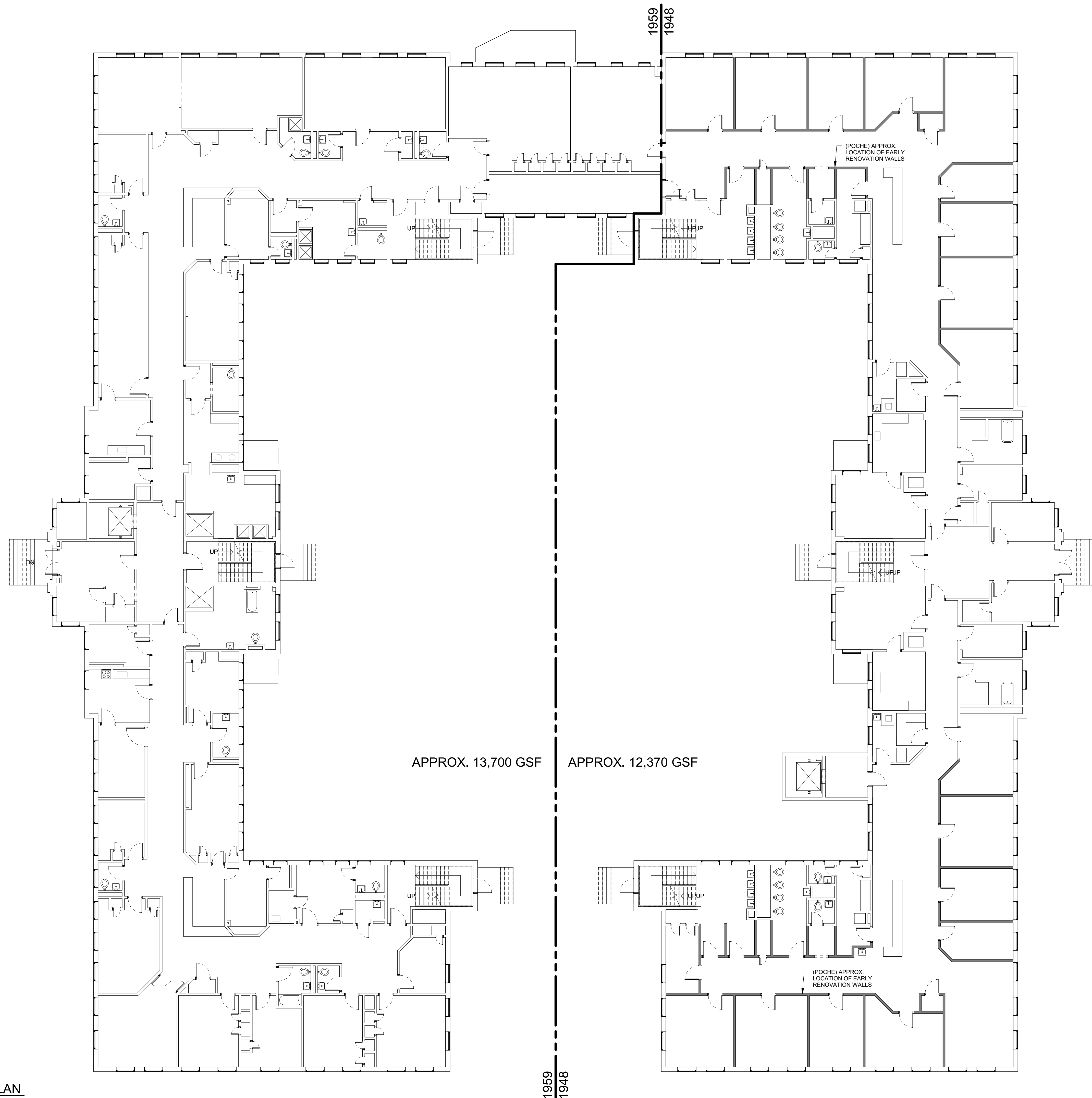
FEBRUARY 21, 2024

Revision Date	Revision Description

Drawn by: KLS

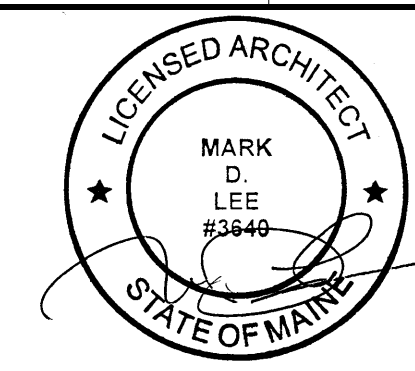
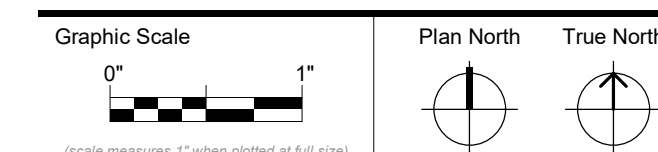
DEMOLITION FIRST FLOOR PLAN

A05-1



GENERAL DEMOLITION NOTES

1. ALL WORK TO BE DONE IN COMPLIANCE WITH LOCAL, STATE, AND FEDERAL REGULATIONS, CODES AND STANDARDS, AND MEET THE REQUIREMENTS OF THE AUTHORITIES HAVING JURISDICTION.
2. BUILDING TO BE DEMOLISHED IN ITS ENTIRETY. REMOVALS TO INCLUDE ALL FOUNDATIONS, FOOTINGS AND ASSOCIATED CONSTRUCTED SUB GRADE ELEMENTS.
3. SEE SITE DEMOLITION NOTES FOR BACKFILLING SCOPE REQUIREMENTS.
4. DRAWINGS ARE ILLUSTRATIVE OF EXISTING CONDITIONS FOR SCOPE AND ESTIMATING PURPOSES. CONDITIONS HAVE NOT BEEN FIELD VERIFIED. IT IS THE CONTRACTOR'S RESPONSIBILITY TO FIELD VERIFY ALL CONDITIONS.
5. REMEDIATION OF HAZARDOUS MATERIALS TO BE COMPLETED PRIOR TO DEMOLITION WITH NOTED EXCEPTIONS.
 - ROOFING: SEE HAZARDOUS MATERIALS REPORT
 - ANY HAZARDOUS MATERIALS DISCOVERED DURING DEMOLITION PROCESS SHOULD FOLLOW APPROVED ABATEMENT PROCEDURES AND APPLICABLE LAWS.
6. ALL BUILDING PLUMBING UTILITIES TO BE DISCONNECTED AND CAPPED AT THE SHUT OFF VALVES PRIOR TO START OF DEMOLITION.
7. TEMPORARY SINGLE POINT POWER AND WATER CONNECTIONS PROVIDED BY OWNER. SEE LOCATION NOTED. CONTRACTOR RESPONSIBLE FOR CODE COMPLIANT DISTRIBUTION BEYOND SINGLE POINT PROVIDED.
8. BUILDING UTILITIES LOCATED WITHIN THE PROJECT SCOPE AREA THAT SERVE OTHER BUILDINGS TO BE MAINTAINED. ANY DISRUPTION CAUSED BY THE SCOPE OF WORK IS TO BE COORDINATED WITH OWNER AND UTILITY PROVIDER PRIOR TO ASSOCIATED WORK.
9. ANY ASSOCIATED UTILITIES SERVING POOLER FROM DISTRIBUTION THAT ALSO CONNECTS TO OTHER BUILDING IS TO BE DISCONNECTED WITH NO DISRUPTION OF SERVICE TO OTHER BUILDINGS. DISCONNECT WORK TO BE COORDINATED WITH OWNER AND UTILITY PROVIDER PRIOR TO ASSOCIATED WORK.



DEMOLITION DOCUMENTS

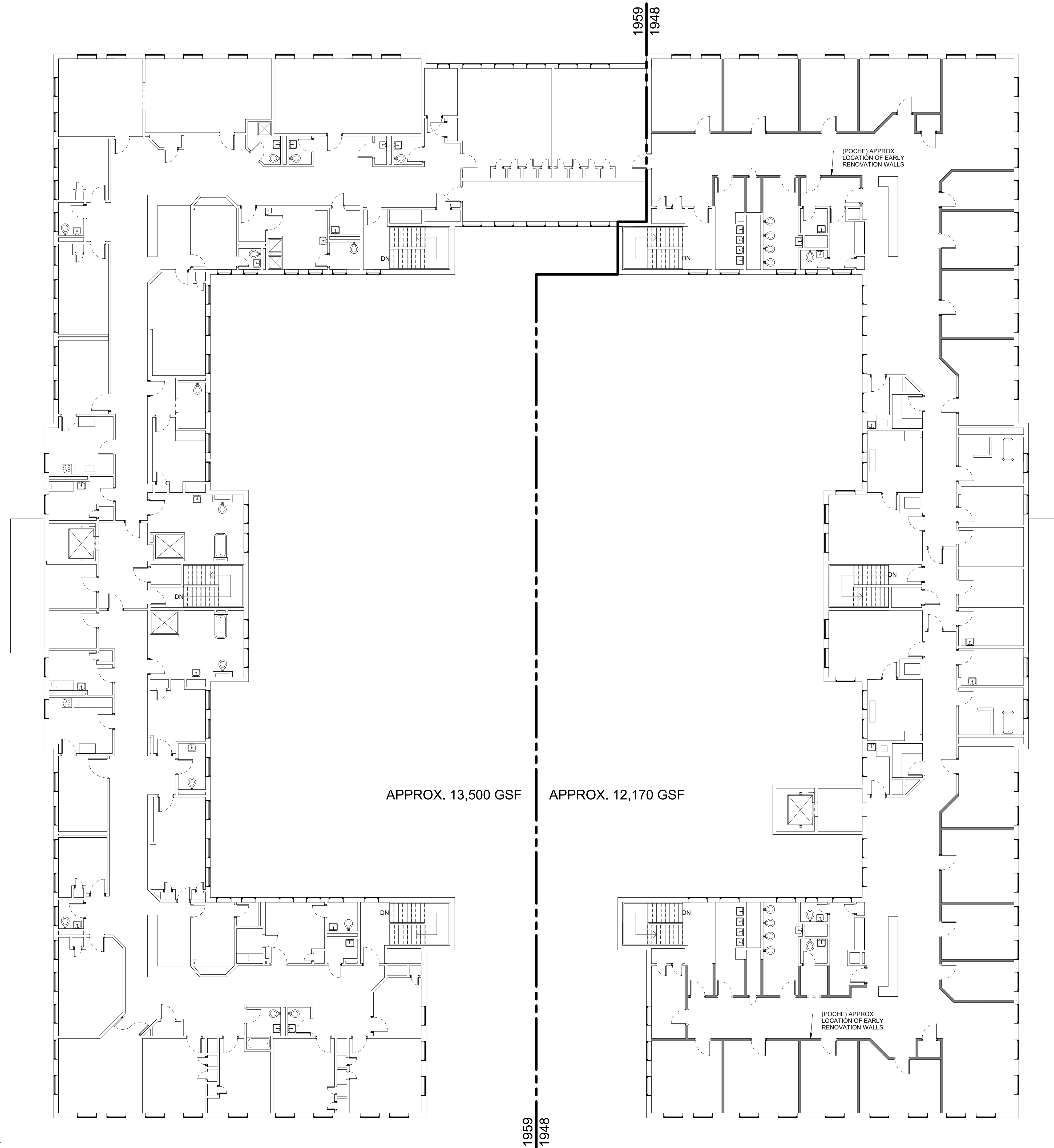
FEBRUARY 21, 2024

Revision Date	Revision Description

Drawn by: KLS

DEMOLITION SECOND FLOOR PLAN

A05-2



Harriman

DOROTHEA DIX
PSYCHIATRIC CENTER

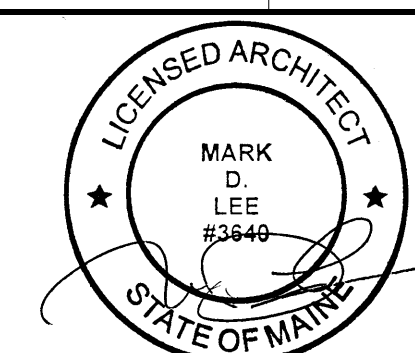
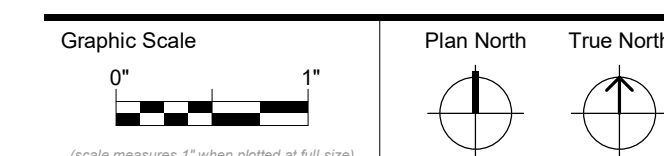
POOLER PAVILION
DEMOLITION

BANGOR, MAINE

Harriman Project No. 23134

GENERAL DEMOLITION NOTES

- ALL WORK TO BE DONE IN COMPLIANCE WITH LOCAL, STATE, AND FEDERAL REGULATIONS, CODES AND STANDARDS; AND MEET THE REQUIREMENTS OF THE AUTHORITIES HAVING JURISDICTION.
- BUILDING TO BE DEMOLISHED IN ITS ENTIRETY. REMOVALS TO INCLUDE ALL FOUNDATIONS, FOOTINGS AND ASSOCIATED CONSTRUCTED SUB GRADE ELEMENTS.
- SEE SITE DEMOLITION NOTES FOR BACKFILLING SCOPE REQUIREMENTS.
- DRAWINGS ARE ILLUSTRATIVE OF EXISTING CONDITIONS FOR SCOPE AND ESTIMATING PURPOSES. CONDITIONS HAVE NOT BEEN FIELD VERIFIED. IT IS THE CONTRACTOR'S RESPONSIBILITY TO FIELD VERIFY ALL CONDITIONS.
- REMEDICATION OF HAZARDOUS MATERIALS TO BE COMPLETED PRIOR TO DEMOLITION WITH NOTED EXCEPTIONS:
 - ROOFING: SEE HAZARDOUS MATERIALS REPORT
 - ANY HAZARDOUS MATERIALS DISCOVERED DURING DEMOLITION PROCESS SHOULD FOLLOW APPROVED ABATEMENT PROCEDURES AND APPLICABLE LAWS.
- ALL BUILDING PLUMBING UTILITIES TO BE DISCONNECTED AND CAPPED AT THE SHUT OFF VALVES PRIOR TO START OF DEMOLITION.
- TEMPORARY SINGLE POINT POWER AND WATER CONNECTIONS PROVIDED BY OWNER. SEE LOCATION NOTED. CONTRACTOR RESPONSIBLE FOR CODE COMPLIANT DISTRIBUTION BEYOND SINGLE POINT PROVIDED.
- BUILDING UTILITIES LOCATED WITHIN THE PROJECT SCOPE AREA THAT SERVE OTHER BUILDINGS TO BE MAINTAINED. ANY DISRUPTION CAUSED BY THE SCOPE OF WORK IS TO BE COORDINATED WITH OWNER AND UTILITY PROVIDER PRIOR TO ASSOCIATED WORK.
- ANY ASSOCIATED UTILITIES SERVING POOLER FROM DISTRIBUTION THAT ALSO CONNECTS TO OTHER BUILDING IS TO BE DISCONNECTED WITH NO DISRUPTION OF SERVICE TO OTHER BUILDINGS. DISCONNECT WORK TO BE COORDINATED WITH OWNER AND UTILITY PROVIDER PRIOR TO ASSOCIATED WORK.



DEMOLITION DOCUMENTS

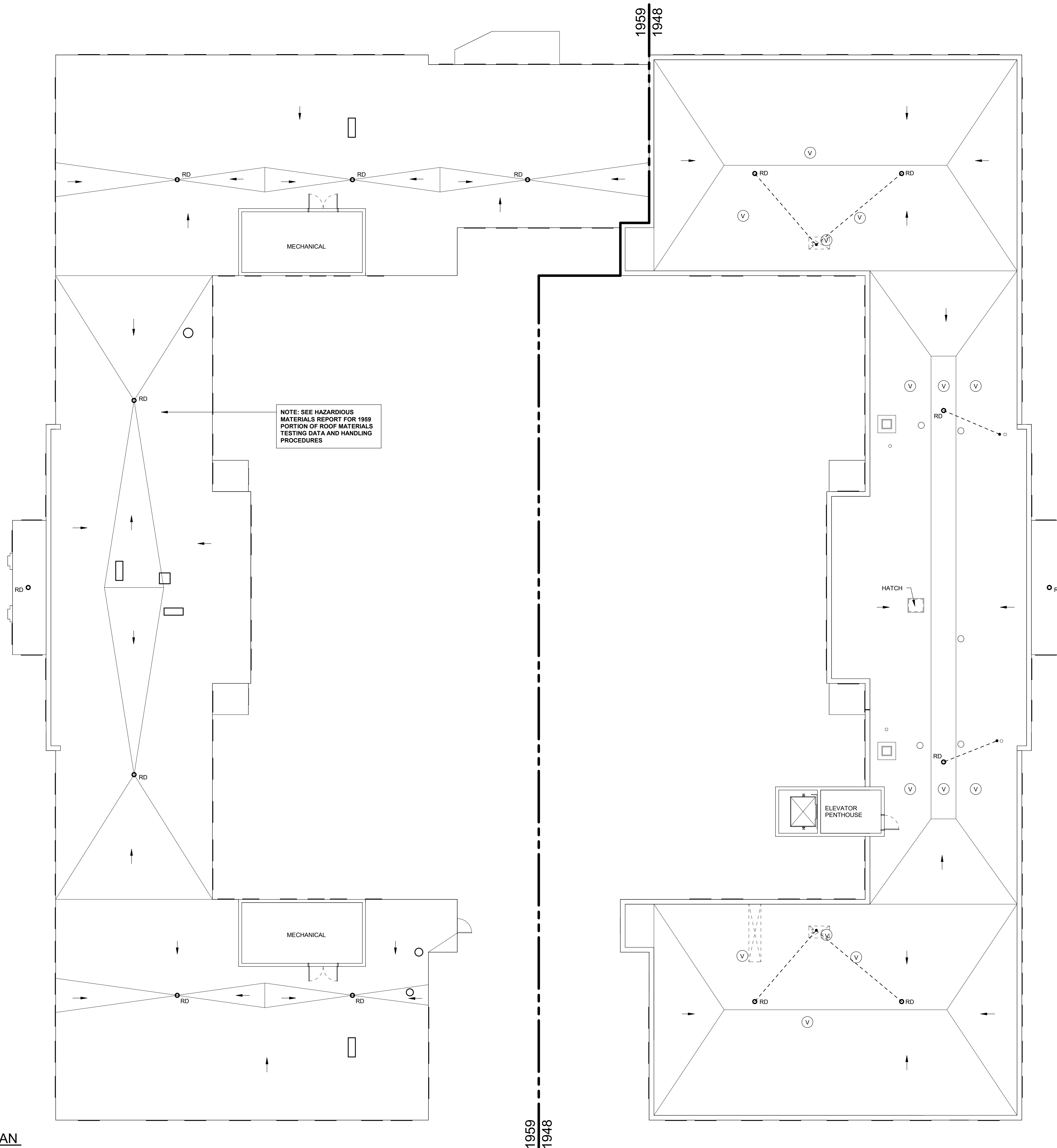
FEBRUARY 21, 2024

Revision Date	Revision Description

Drawn by: KLS

DEMOLITION ROOF
PENTHOUSE PLAN

A05-3

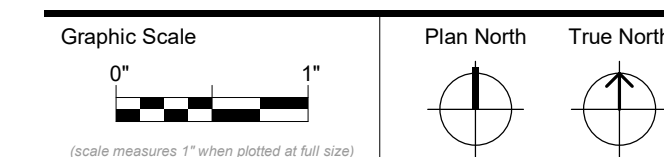


NOTE: SEE HAZARDOUS MATERIALS REPORT FOR 1959 PORTION OF ROOF MATERIALS TESTING DATA AND HANDLING PROCEDURES

A1 EXISTING ROOF PENTHOUSE PLAN
SCALE: 3/32" = 1'-0"

GENERAL DEMOLITION NOTES

- ALL WORK TO BE DONE IN COMPLIANCE WITH LOCAL, STATE, AND FEDERAL REGULATIONS, CODES AND STANDARDS; AND MEET THE REQUIREMENTS OF THE AUTHORITIES HAVING JURISDICTION.
- BUILDING TO BE DEMOLISHED IN ITS ENTIRETY. REMOVALS TO INCLUDE ALL FOUNDATIONS, FOOTINGS AND ASSOCIATED CONSTRUCTED SUB GRADE ELEMENTS.
- SEE SITE DEMOLITION NOTES FOR BACKFILLING SCOPE REQUIREMENTS.
- DRAWINGS ARE ILLUSTRATIVE OF EXISTING CONDITIONS FOR SCOPE AND ESTIMATING PURPOSES. CONDITIONS HAVE NOT BEEN FIELD VERIFIED. IT IS THE CONTRACTOR'S RESPONSIBILITY TO FIELD VERIFY ALL CONDITIONS.
- REMEDICATION OF HAZARDOUS MATERIALS TO BE COMPLETED PRIOR TO DEMOLITION WITH NOTED EXCEPTIONS:
 - ROOFING: SEE HAZARDOUS MATERIALS REPORT
 - ANY HAZARDOUS MATERIALS DISCOVERED DURING DEMOLITION PROCESS SHOULD FOLLOW APPROVED ABATEMENT PROCEDURES AND APPLICABLE LAWS.
- ALL BUILDING PLUMBING UTILITIES TO BE DISCONNECTED AND CAPPED AT THE SHUT OFF VALVES PRIOR TO START OF DEMOLITION.
- TEMPORARY SINGLE POINT POWER AND WATER CONNECTIONS PROVIDED BY OWNER. SEE LOCATION NOTED. CONTRACTOR RESPONSIBLE FOR CODE COMPLIANT DISTRIBUTION BEYOND SINGLE POINT PROVIDED.
- BUILDING UTILITIES LOCATED WITHIN THE PROJECT SCOPE AREA THAT SERVE OTHER BUILDINGS TO BE MAINTAINED. ANY DISRUPTION CAUSED BY THE SCOPE OF WORK IS TO BE COORDINATED WITH OWNER AND UTILITY PROVIDER PRIOR TO ASSOCIATED WORK.
- ANY ASSOCIATED UTILITIES SERVING POOLER FROM DISTRIBUTION THAT ALSO CONNECTS TO OTHER BUILDING IS TO BE DISCONNECTED WITH NO DISRUPTION OF SERVICE TO OTHER BUILDINGS. DISCONNECT WORK TO BE COORDINATED WITH OWNER AND UTILITY PROVIDER PRIOR TO ASSOCIATED WORK.



DEMOLITION DOCUMENTS

FEBRUARY 21, 2024

Revision Date	Revision Description

Drawn by: KLS

DEMOLITION ROOF PLAN

A05-4

