





Photograph 1: View looking west from Route 201 in Moscow of the existing transmission line crossing that runs in a southeast direction from Wyman Hydroelectric Dam. The project will not be visible from this viewpoint.

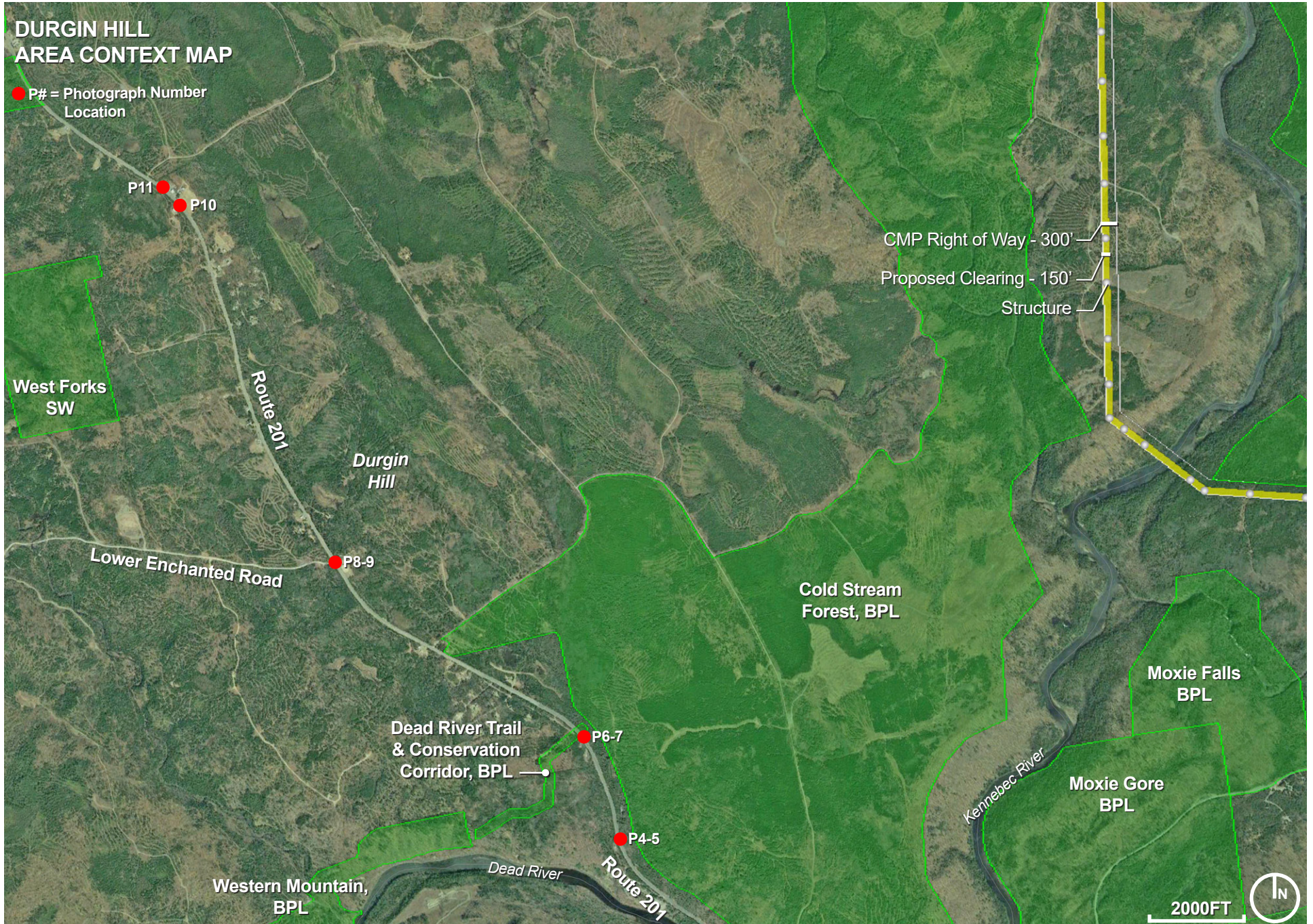


2



3

Photograph 2&3: View looking west (above), and east (right) from Route 201 in Moscow toward the existing transmission crossing line that runs north from the Wyman Hydroelectric Dam. The existing 225' wide corridor clearing will be widened by 75' on the western side to accommodate the proposed HVDC transmission line. See Photosimulation 19 in Appendix D.





Photograph 4&5: View looking north (above), and south (right), from Route 201 near the base of Durgin Hill in West Fork Plt. The Project is located 3.5 miles east of this viewpoint and will not be visible in any direction due to vegetation and terrain.



Photograph 6&7: View looking north (above), and south (right), from Route 201 mid way up Durgin Hill in West Forks Plt. When traveling south in this area, views looking south towards Moxie Mountain can be seen. The Project is located 3.6 miles east of this viewpoint and will not be visible in any direction due to vegetation and terrain.



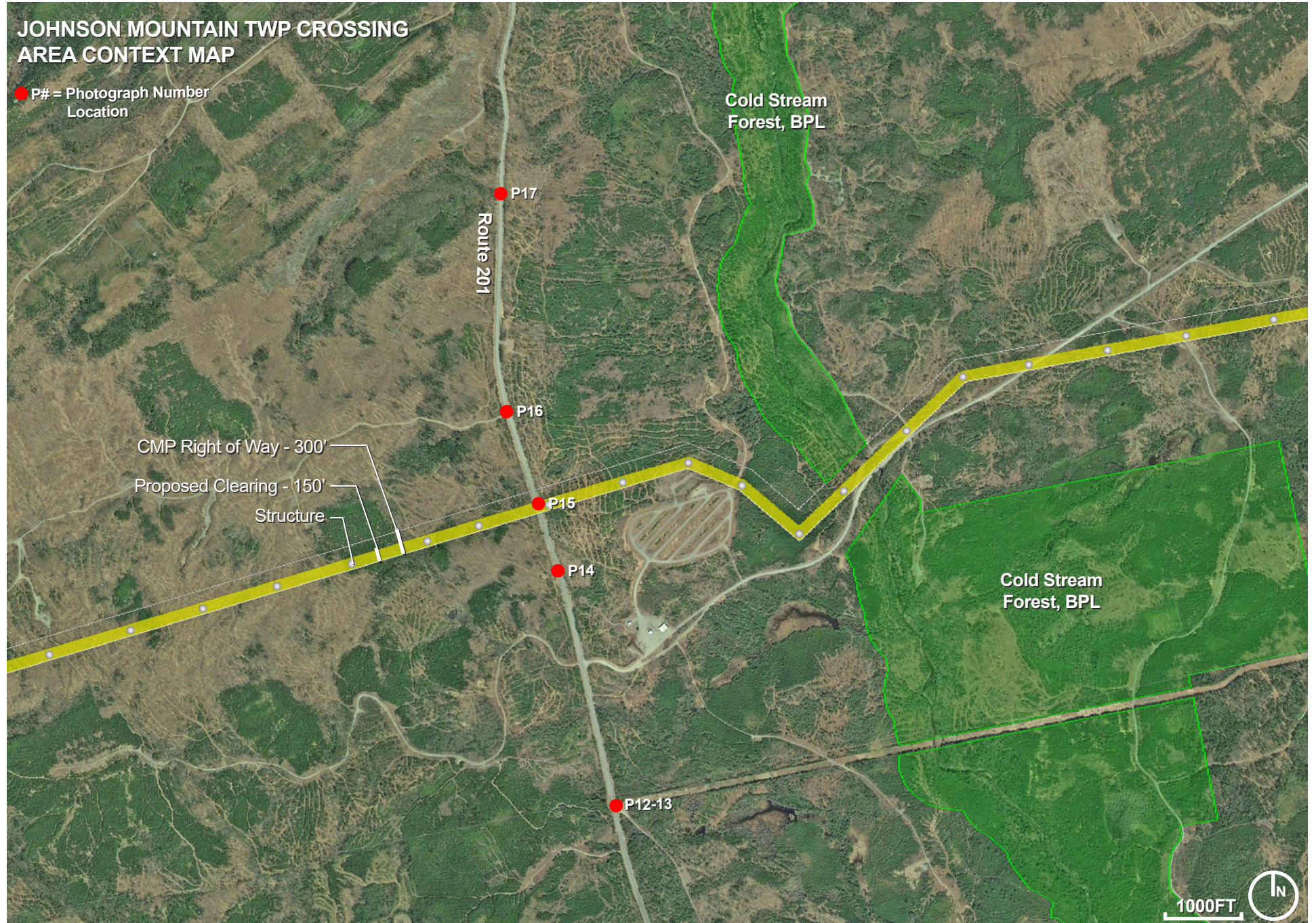
Photograph 8&9: View looking northeast (above), and southeast (right), from Route 201 near the top up Durgin Hill in West Forks Plt. When traveling southeast in this area, views looking southeast towards Pleasant Pond Mountain and Moxie Mountain can be seen. The Project is located 3 miles east of this viewpoint and will not be visible in any direction due to vegetation and terrain.



Photograph 10: View looking north to northeast from the crest of a hill on Route 201 near Grand View Lodging in West Forks Plt. Cold Stream Mountain is visible in the left hand side of the image. The Project is located 3 miles northeast of this viewpoint and will be blocked or highly buffered from views due to intervening vegetation and terrain.



Photograph 11: View looking northwest from the crest of a hill on Route 201 near Grand View Lodging. Johnson Mountain is visible in the center of the image. A glimpse of the project from this viewpoint may be visible at the base of Johnson Mountain, 4.4 miles away.







Photograph 12: View looking east towards the Jackman Tie Line from a point at its intersection with Route 201 in West Forks Plt. The Project crosses Route 201 0.7 miles north of this viewpoint and will not be visible looking in this direction.



Photograph 13: Transmission line structure at the intersection of the Jackman Tie Line and Route 201 in West Forks Plt.



Photograph 14: View looking northwest on Route 201 in Johnson Mountain Twp approximately 800 feet south of the Project's crossing over Route 201. Conductors and one structure will be visible from this viewpoint.



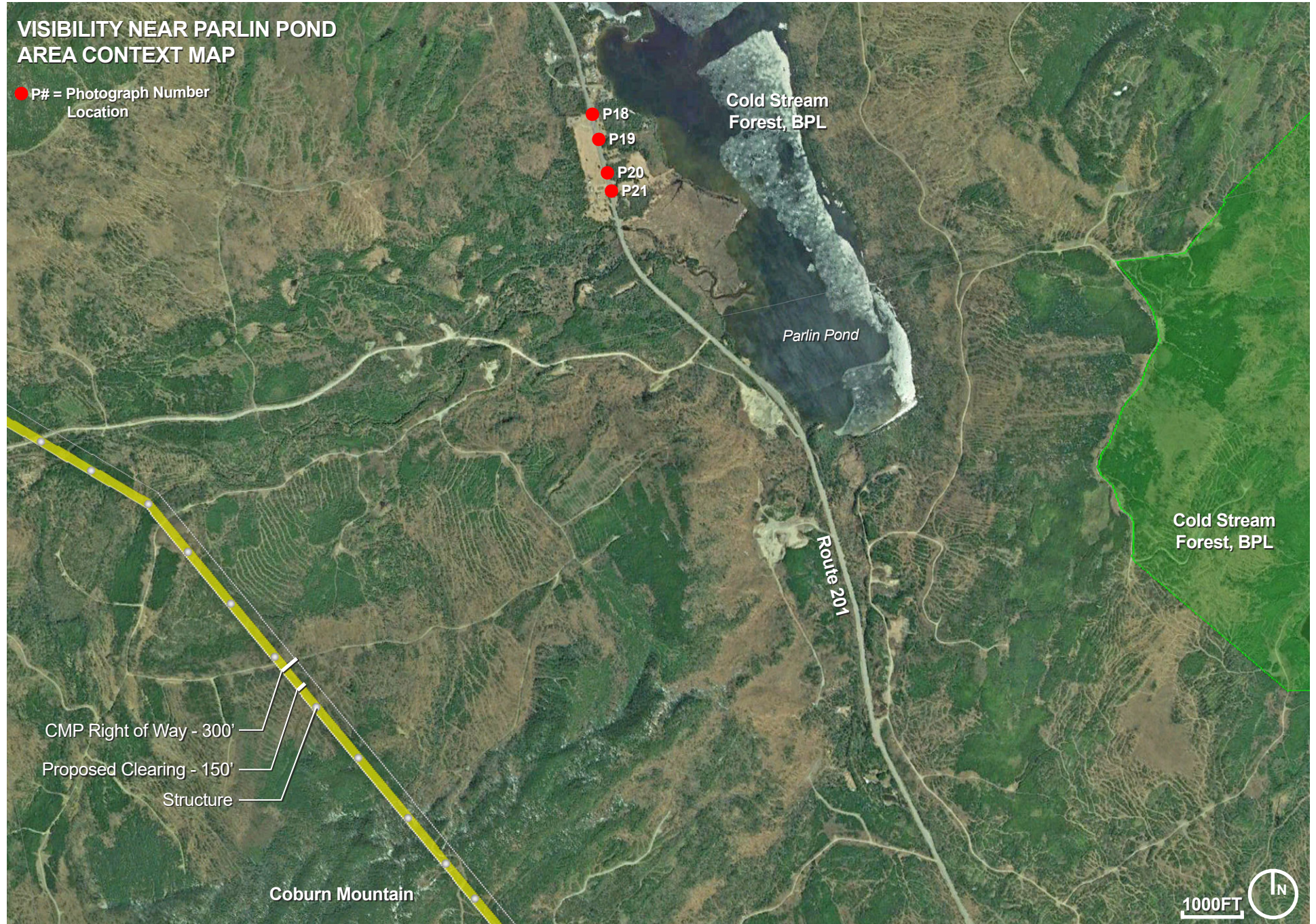
Photograph 15: View looking southeast on Route 201 in Johnson Mountain Twp from just within the proposed 150 foot wide Project corridor. The southern edge of the Project corridor is marked by orange cones in the image. Conductors will be visible above the existing distribution line. The closest proposed structures will be visible 125 feet to the east of the crossing and 800 feet to the west of the crossing.



Photograph 16: View looking southeast on Route 201 approximately 1,200 feet north of the Project's crossing over Route 201. Conductors and one structure will be visible from this viewpoint. See Photosimulation 9 in Appendix D.



Photograph 17: View looking south on Route 201 approximately 0.75 miles from the Project. Dead River Mountain is visible in the background. The top of one structure and conductors would be minimally visible from this viewpoint.





Photograph 18&19: View looking southeast from Route 201 in Parlin Pond Twp. When traveling southbound at 45 mph, a field on the west side of Route 201 opens up views towards the Project crossing over the northeast end of Coburn Mountain for approximately 15 seconds of travel along 1000 feet of road visibility.



Photograph 20&21: Continued views looking southeast while traveling southbound on Route 201 towards the area where the project will cross over Coburn Mountain.



Photograph 22: View looking southeast to southwest toward the Project from the Attean View Rest Stop on Route 201 in Jackman. Individual structures will be difficult to see at this distance, but the corridor clearing may be slightly visible at a distances of 7.1 to 12.0 miles. See Photosimulation 6 in Appendix D.



Photograph 23: View looking northwest showing the elevated rest stop above Route 201. The project will not be visible looking in this direction.



Photograph 24: Interpretive Panels at the Attean View Rest Stop with nearby Catheart Mountain in the background.