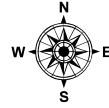
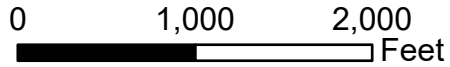
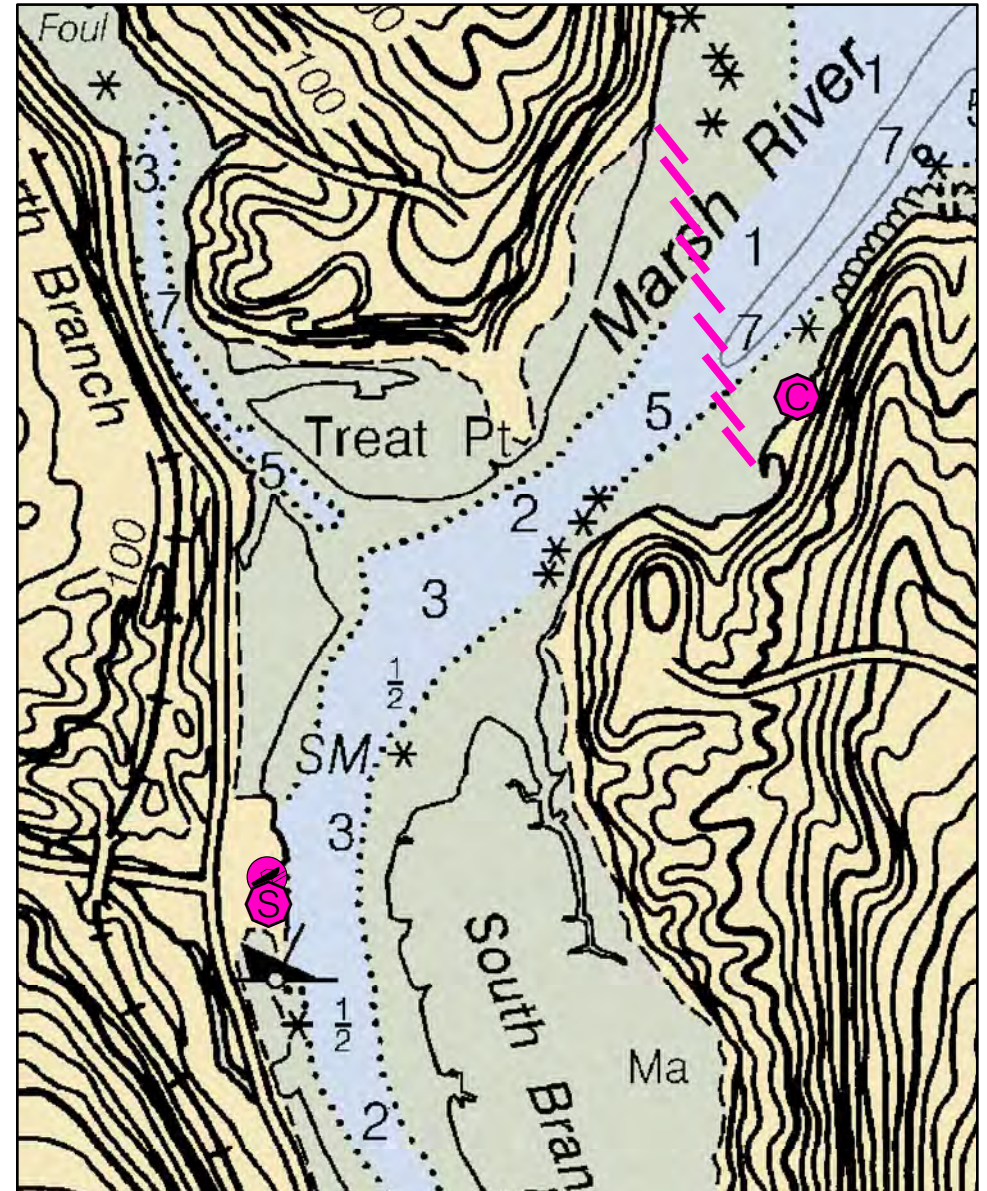
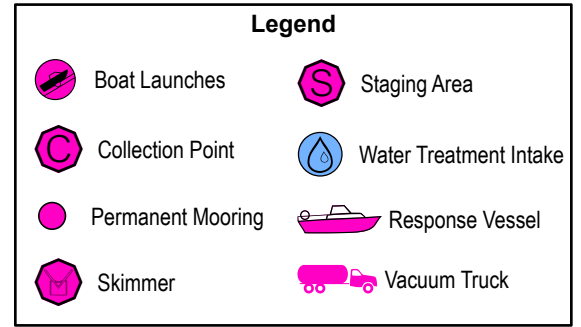
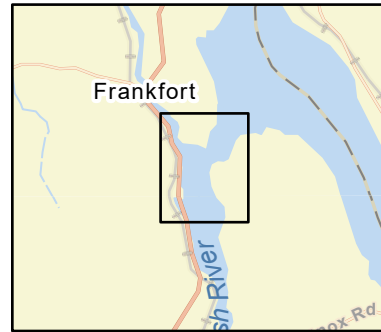


# C-18-1

## Frankfort / Marsh River Frankfort / Marsh River, ME



Date printed: 9/10/2022 7:52 PM



# C-18-1 Frankfort / Marsh River

**Town** Frankfort / Marsh River

**Port Region** Penobscot Bay

**Latitude** 44° 36.025' N **Longitude** 68° 51.325' W

**NOAA Chart #** 13309\_1

**Approx. Tidal Range (feet)** 12

**ESI Map #** 16C, 16A

**Max Current (knots)** **Flood** 2+ knots **Ebb**

**EVI Map #** 71

**Source** estimated

**DeLorme Map # (2019)** 23 D1

## Resources At Risk

**ESI Primary Shoreline Type** Salt to brackish marshes (10A)

**ESI Secondary Shoreline Type** Vegetated low banks (9B)

**Environmental Concerns** Extensive salt marsh in upper areas of Marsh River. Diadromous fish and elver runs. Waterfowl and shorebird habitat. Area is Franklin Wildlife Management Area (owned by IF&W).

**Archaeological Conflicts** No conflict as designed. Deviations from GRS design will require MHPC review. Contact MHPC at (207) 287-2132.

## Strategy Information

**Strategy Purpose** To divert oil from upper Marsh River

**Staging Areas** Frankfort boat launch.

**Site Access** Frankfort boat launch on Mt. Waldo Road. Trailerable, all-tide

**Nearest Boat Ramp** .5 mile in river off Mt. Waldo Road

**Collection Points** Strategy is primarily exclusion. On water collection from Bowden Point side

**Special Instructions** Strategy has been successfully deployed by Penobscot River Oil Pollution Abatement Committee (PROPAC)

**Work Assignment** Secure 300' of intertidal boom to the southern tip of Treat Point and deploy in a easterly (approximately 104 degrees M) direction and anchor toward mid-channel. Use an additional eight 300' lengths of boom to cascade across river to small cove just south of Bowden Point

## Recommended Equipment / Resources

**Length of Boom (feet)** 2700

**Type of Boom** 12" to 18" containment boom

**Recommended Equipment (Minimum)**  
4 - anchor systems: 35 lb. Danforth or equivalent and line for 3:1 scope plus tag line with buoys.  
2 - shoreside connections.  
1 - vacuum truck or skimmer and storage  
2 - workboats with minimum 90 hp  
2 - boat operators  
4 - laborers

Unless otherwise indicated, the boom length given is the distance measured on the chart. Actual length required may vary with conditions.

Last Desktop Validation: 7/15/2014

Last Field Visit: 8/24/2005

Last Field Test: 7/16/2008