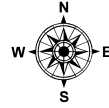
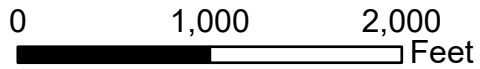


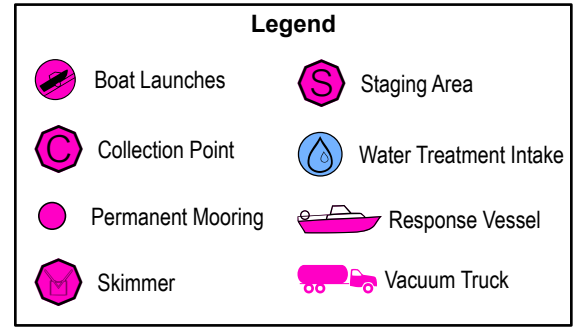
C-24-1

Eastern Deer Isle

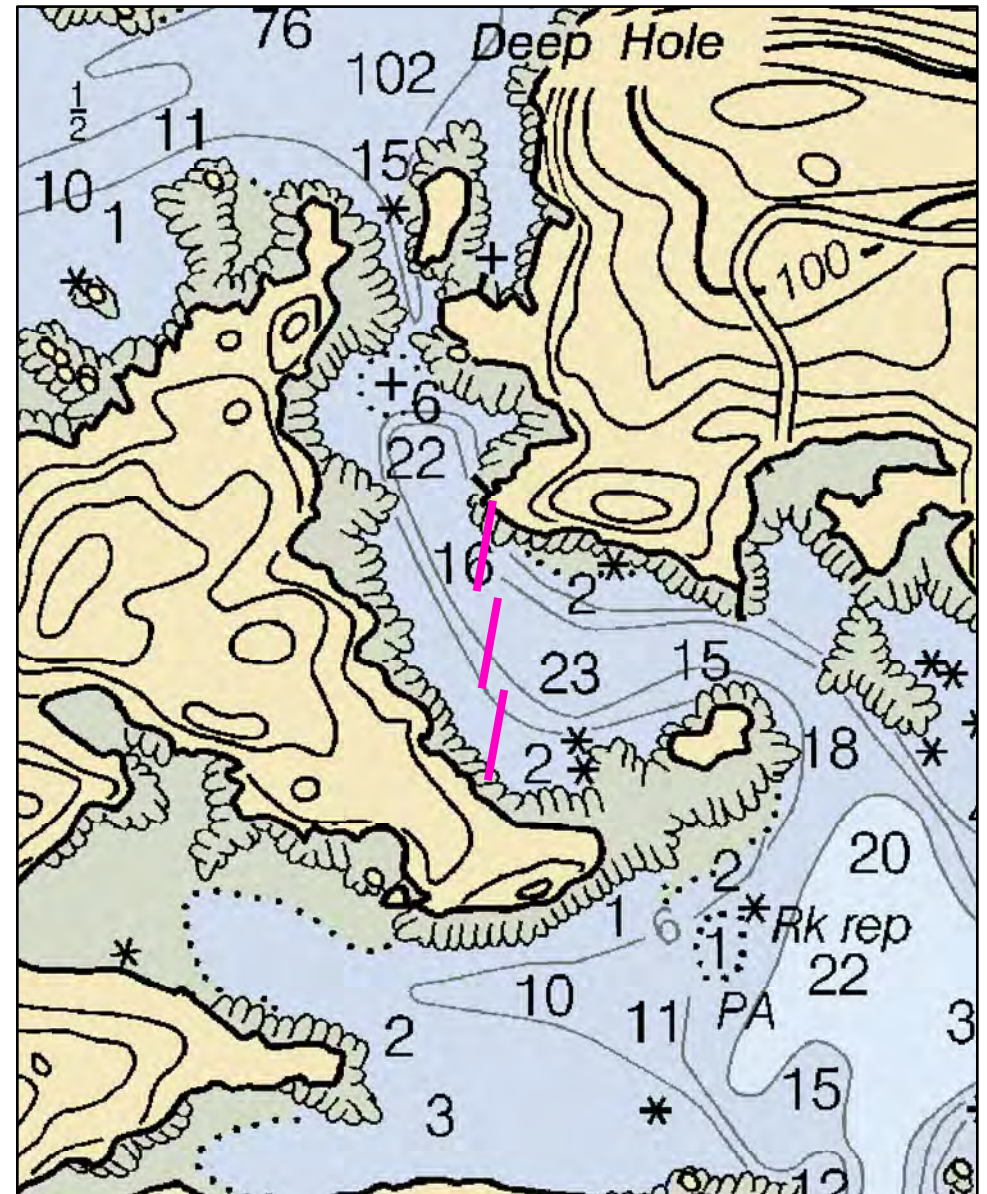
Deer Isle / Stonington, ME



Date printed: 9/11/2022 6:51 AM



ARCHAEOLOGICAL CONFLICTS MAY BE PRESENT - SEE NARRATIVE



C-24-1 Eastern Deer Isle

Town Deer Isle / Stonington

Latitude 44° 12.346' N **Longitude** 68° 39.273' W

Approx. Tidal Range (feet) 10

Max Current (knots) **Flood** **Ebb**

Source

Port Region Penobscot Bay

NOAA Chart # 13316_1

ESI Map # 28A, 28C

EVI Map # 54

DeLorme Map # (2019) 15 D4

Resources At Risk

ESI Primary Shoreline Type Exposed wave-cut platforms in bedrock, mud, or clay (2A)

ESI Secondary Shoreline Type Mixed sand and gravel beaches (5)

Environmental Concerns Shellfish beds, shorebird habitat, mudflats and eelgrass in upper Southwest Harbor

Archaeological Conflicts No conflict as designed. Deviations from GRS design will require MHPC review. Contact MHPC at (207) 287-2132.

Strategy Information

Strategy Purpose To exclude oil from upper Southwest Harbor

Staging Areas May be able to pull boom from large private residence off Rte. 15 at 110 Osprey Point Drive, South Deer Island or from causeway on Rte. 115 at the head of Long Cove.

Site Access Same as staging above

Nearest Boat Ramp Stonington Town Dock, 1 High Street, Stonington

Collection Points Primary purpose is exclusion

Special Instructions

Work Assignment Place three 400 foot lengths of boom across channel as shown

Recommended Equipment / Resources

Length of Boom (feet) 1200

Type of Boom 12" - 18" containment boom

Recommended Equipment (Minimum)
4 - anchor systems: 35 lb. Danforth or equivalent and line for 3:1 scope plus tag line with buoys, or
2 - shoreside connections.
2 - workboats with minimum 90 hp
2 - boat operators
4 - laborers

Unless otherwise indicated, the boom length given is the distance measured on the chart. Actual length required may vary with conditions.

Last Desktop Validation: 1/4/2019

Last Field Visit

Last Field Test: