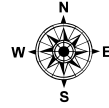
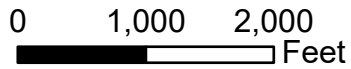


# C-26-1

## Mackerel Cove

### Swans Island, ME

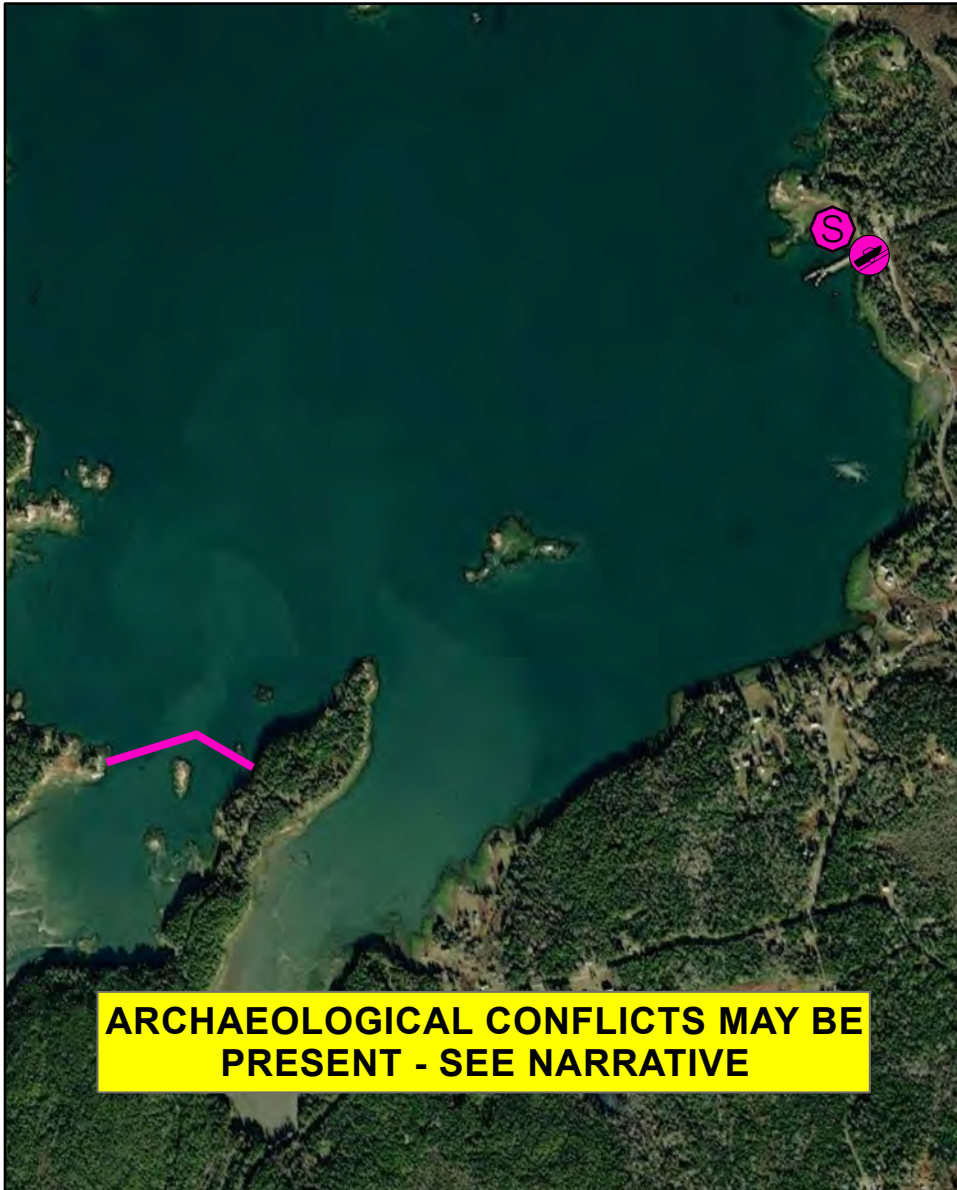


Date printed: 9/11/2022 6:50 AM

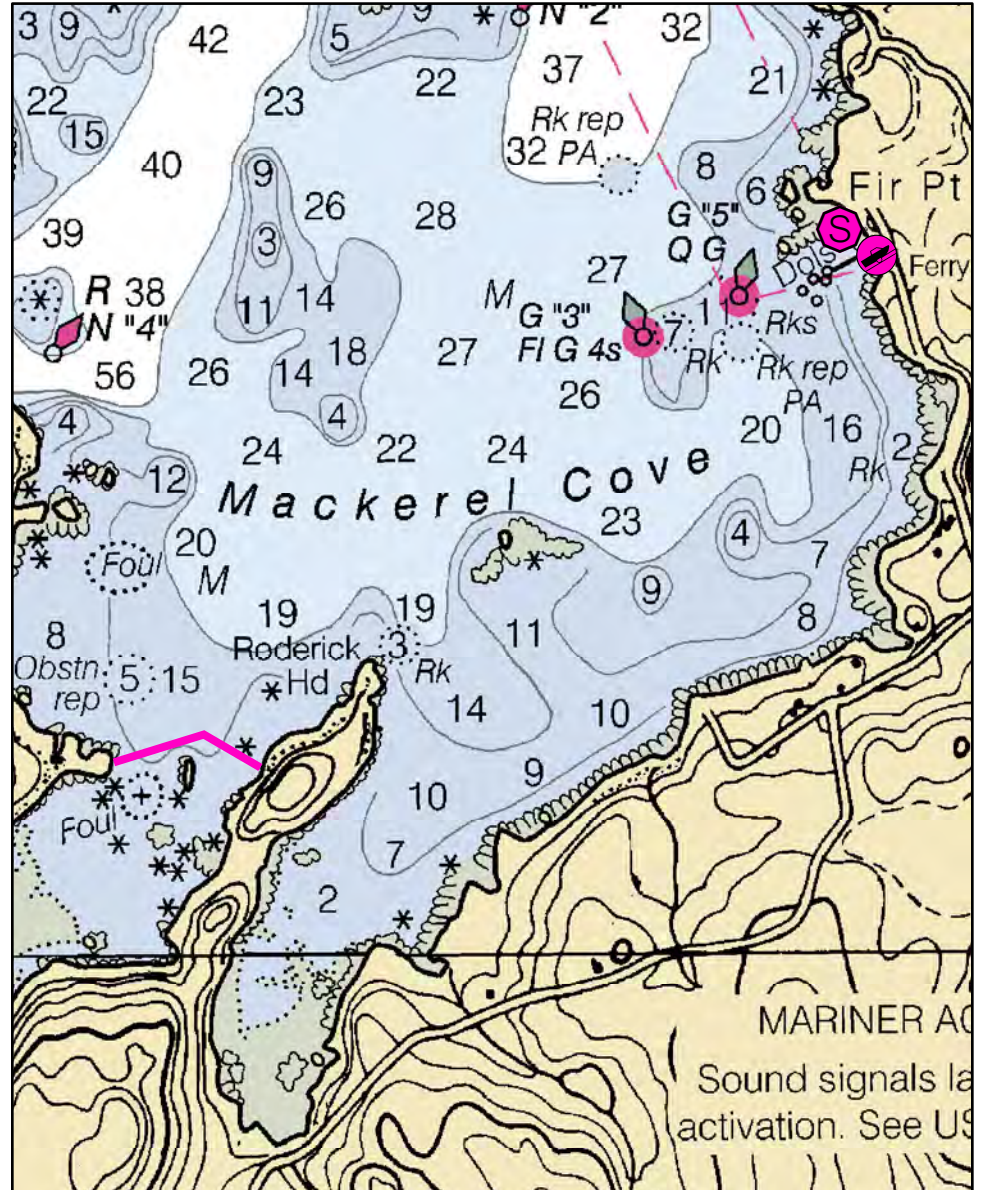


**Legend**

	Boat Launches		Staging Area
	Collection Point		Water Treatment Intake
	Permanent Mooring		Response Vessel
	Skimmer		Vacuum Truck



**ARCHAEOLOGICAL CONFLICTS MAY BE PRESENT - SEE NARRATIVE**



# C-26-1 Mackerel Cove

**Town** Swans Island

**Port Region** Penobscot Bay

**Latitude** 44° 10.279' N **Longitude** 68° 26.554' W

**NOAA Chart #** 13313\_1

**Approx. Tidal Range (feet)** 10

**ESI Map #** 27C

**Max Current (knots)** Flood Ebb

**EVI Map #** 55

**Source** **DeLorme Map # (2019)** 16 D1, E1

## Resources At Risk

**ESI Primary Shoreline Type** Exposed wave-cut platforms in bedrock, mud, or clay (2A)

**ESI Secondary Shoreline Type**

**Environmental Concerns** Mudflats, shellfish and marine worm habitat

**Archaeological Conflicts** No conflict as designed. Deviations from GRS design will require MHPC review. Contact MHPC at (207) 287-2132.

## Strategy Information

**Strategy Purpose** To exclude oil from Mackerel Cove

**Staging Areas** Boat ramp at ferry landing, Ferry Road in Mackerel Cove

**Site Access** By water from ferry landing

**Nearest Boat Ramp** Ferry Road, Swans Island

**Collection Points** N/A. Meant to exclude oil from sheltered flats

**Special Instructions** Area is rocky -- use caution

**Work Assignment** Place 700 feet of boom from west shore to channel center, and 500 feet of boom from east shore to channel center.

## Recommended Equipment / Resources

**Length of Boom (feet)** 1200

**Type of Boom** 12" - 18" containment boom

**Recommended Equipment (Minimum)**  
1 - anchor system: 40 lb. Danforth or equivalent and line for 3:1 scope plus tag lines and buoys.  
2 - shoreside connections  
2 - workboats with minimum 90 hp  
2 - boat operators  
4 - laborers

Unless otherwise indicated, the boom length given is the distance measured on the chart. Actual length required may vary with conditions.

Last Desktop Validation: 1/10/2019

Last Field Visit

Last Field Test: