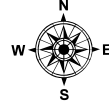
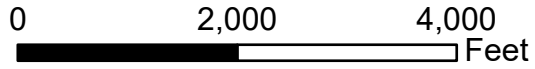


# C-32-1

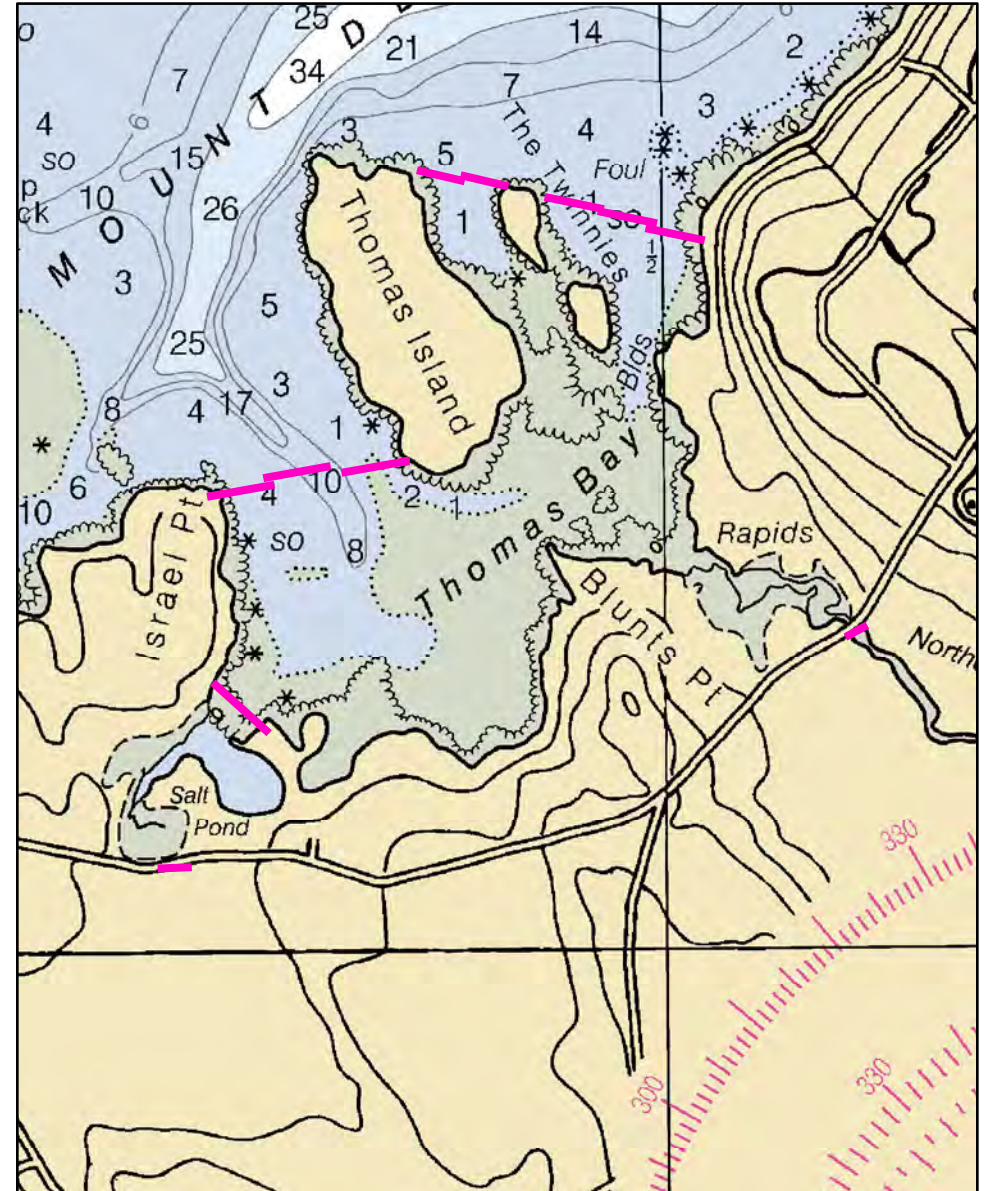
## Mount Desert Narrows / Thomas Bay Bar Harbor, ME



Date printed: 9/10/2022 7:53 PM



Legend			
	Boat Launches		Staging Area
	Collection Point		Water Treatment Intake
	Permanent Mooring		Response Vessel
	Skimmer		Vacuum Truck



# C-32-1 Mount Desert Narrows / Thomas Bay

**Town** Bar Harbor

**Port Region** Penobscot Bay

**Latitude** 44° 25.275' N **Longitude** 68° 20.77' W

**NOAA Chart #** 13318\_1

**Approx. Tidal Range (feet)** 11

**ESI Map #** 21A

**Max Current (knots)** **Flood** **Ebb**

**EVI Map #** 68

**Source** **DeLorme Map # (2019)** 16 A2, A3

## Resources At Risk

**ESI Primary Shoreline Type** Exposed wave-cut platforms in bedrock, mud, or clay (2A)

**ESI Secondary Shoreline Type**

**Environmental Concerns** Salt marsh and brackish marsh at Northeast Creek and Jones Marsh. Thomas Bay is important rafting bird area and shorebird habitat, with eelgrass beds and bald eagle nesting sites. Sheltered tidal flats and shellfish beds. Acadia National Park owns land to the east of Route 3 on Northeast Creek.

**Archaeological Conflicts** Use rock or tree straps on southern end of Thomas Island. Deviations from GRS design will require MHPC review. Contact MHPC at (207) 287-2132.

## Strategy Information

**Strategy Purpose** Primary strategy is to exclude oil from Northeast Creek (beyond Thomas Island) and Jones Marsh (near Salt Pond). This strategy also protects the rest of Thomas Bay.

**Staging Areas** Morris Yachts production facility, 27 Ramp Road, Trenton, ME. (207) 244-5509 for information/permission. Adjacent to Hancock Co. airport at mouth of Jordan River.

**Site Access** By water from Morris Yachts

**Nearest Boat Ramp** Morris Yachts production facility, 27 Ramp Road, Trenton, ME. (207) 244-5509 for information/permission. Adjacent to Hancock Co. airport at mouth of Jordan River.

**Collection Points** N/A. Strategy is exclusion.

**Special Instructions** Significant amount of aquaculture leases within this area will make boom deployment difficult. Note that the Mount Desert Oceanarium owns a well serving their facility between Salt Pond and Route 3. Area to east of Route 3 on Northeast Creek is owned by Acadia National Park

**Work Assignment** This is a very large and difficult strategy. If #1 is not possible, try #2 as a much lesser alternative:

1. Exclude from Thomas Bay. Place three 600 foot lengths of boom across from Thomas Island west to Israel Point. Boom access to Salt Pond with 600 feet of boom. Place two 400 foot lengths of boom spanning between Thomas Island to the Twinnies and three 500 foot sections on to the east, joining the west side of Mount Desert Island.

2. Place 200 feet of boom across Northeast Creek on the east side of Route 3, and 250 feet of boom across Jones Marsh on the east side of Route 3 upstream of the Salt Pond.

## Recommended Equipment / Resources

**Length of Boom (feet)** 5600

**Type of Boom** 12" to 18" containment boom

**Recommended Equipment (Minimum)**

Primary (#1):

Secondary (#2):

10 - anchor systems: 35 lb. Danforth or equivalent and line for 3:1 scope plus tag lines and buoys.

4 - shoreside connections

8- shoreside connections

4 laborers

4 - workboats with minimum 90 hp

4 - boat operators / 8 laborers

Unless otherwise indicated, the boom length given is the distance measured on the chart.

Actual length required may vary with conditions.

Last Desktop Validation: 1/11/2019

Last Field Visit

Last Field Test: