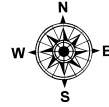
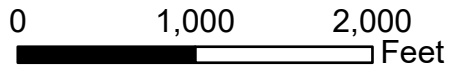


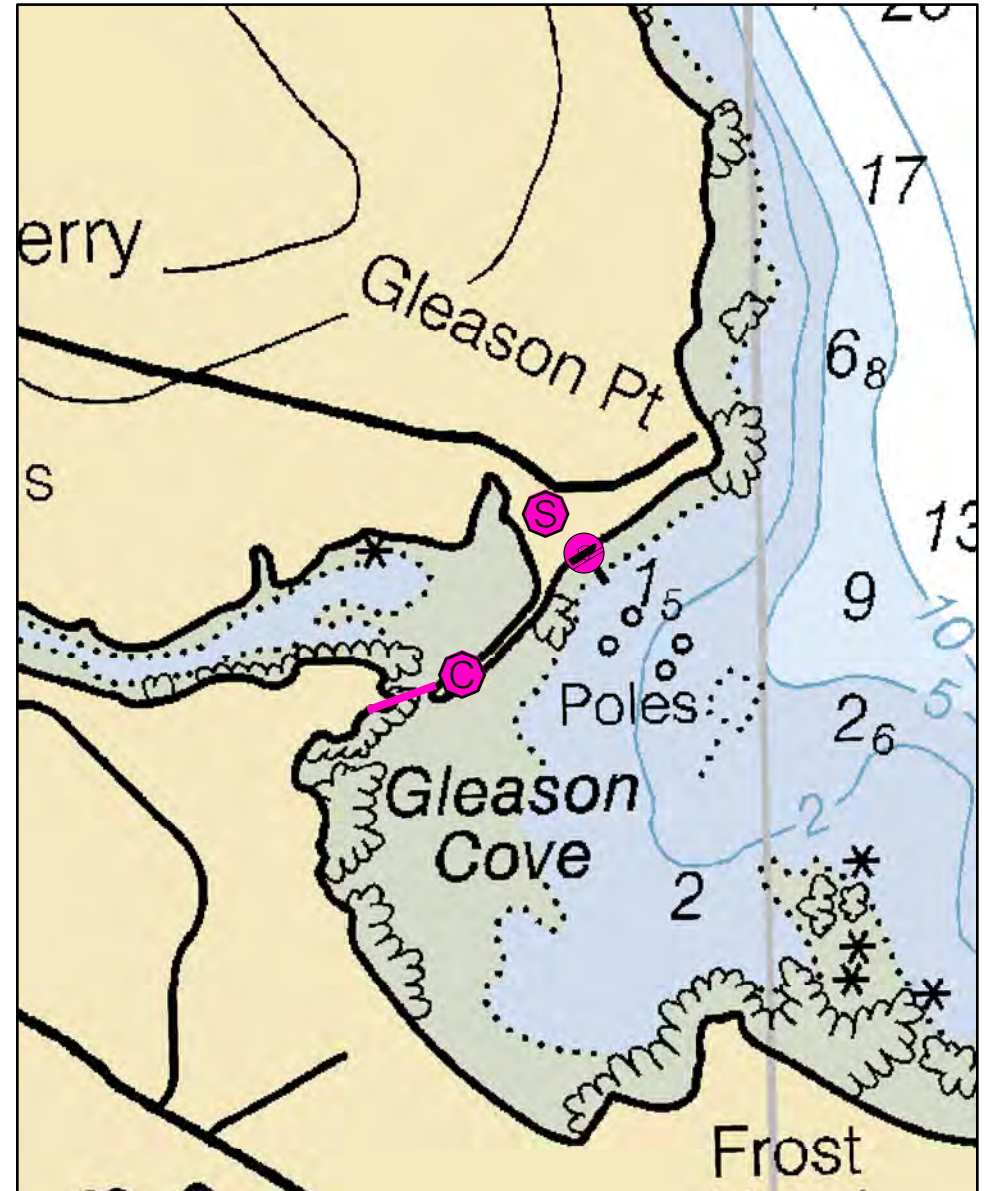
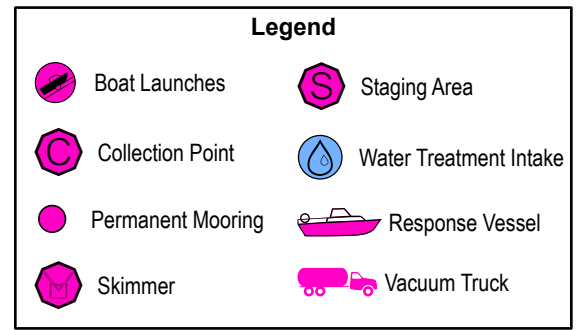
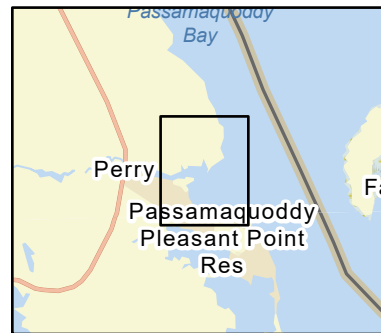
# D-24-1

## Gleason Cove

### Perry, ME



Date printed: 9/10/2022 7:54 PM



# D-24-1 Gleason Cove

**Town** Perry

**Port Region** Downeast

**Latitude** 44° 58.290' N **Longitude** 67° 3.024' W

**NOAA Chart #** 13398\_1

**Approx. Tidal Range (feet)** 19

**ESI Map #** 3B

**Max Current (knots)** **Flood** < 1 knot **Ebb**

**EVI Map #** 95

**Source** Observed

**DeLorme Map # (2019)** 37 E3

## Resources At Risk

**ESI Primary Shoreline Type** Coarse-grained sand beaches (4)

**ESI Secondary Shoreline Type** Mixed sand and gravel beaches (5)

**Environmental Concerns** Shorebirds, bald eagle nesting site, diadromous fish and elver runs in Little River. Active herring weirs, shellfish and eelgrass in cove.

**Archaeological Conflicts** No conflict as designed. Deviations from GRS design will require MHPC review. Contact MHPC at (207) 287-2132.

## Strategy Information

**Strategy Purpose** Divert oil from inner Gleason Cove / Little River

**Staging Areas** Gleason Point

**Site Access** Gleason Point

**Nearest Boat Ramp** Gleason Point (concrete)

### Collection Points

**Special Instructions** Contact Passamaquoddy tribe at Pleasant Point: 207-853-2600. After hours: 207-853-6100

**Work Assignment** Deploy 350 feet of boom from end of sand spit at Gleason Point across Little River

## Recommended Equipment / Resources

**Length of Boom (feet)** 350

**Type of Boom** 12" to 18" containment boom

**Recommended Equipment (Minimum)**  
2 - anchor systems (shoreside)  
1 - vacuum truck or skimmer and storage  
1 - workboat and/ or  
2 - laborers and truck

Unless otherwise indicated, the boom length given is the distance measured on the chart. Actual length required may vary with conditions.

Last Desktop Validation: 5/4/2019

Last Field Visit: 6/13/2007

Last Field Test: