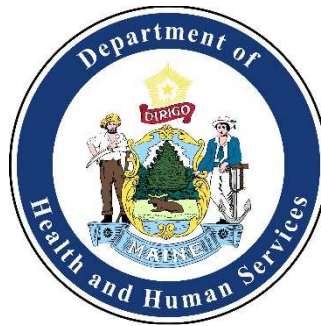


# SCC Quarterly Meeting

Nancy Beardsley, Deputy Director, Maine CDC

June 17, 2021

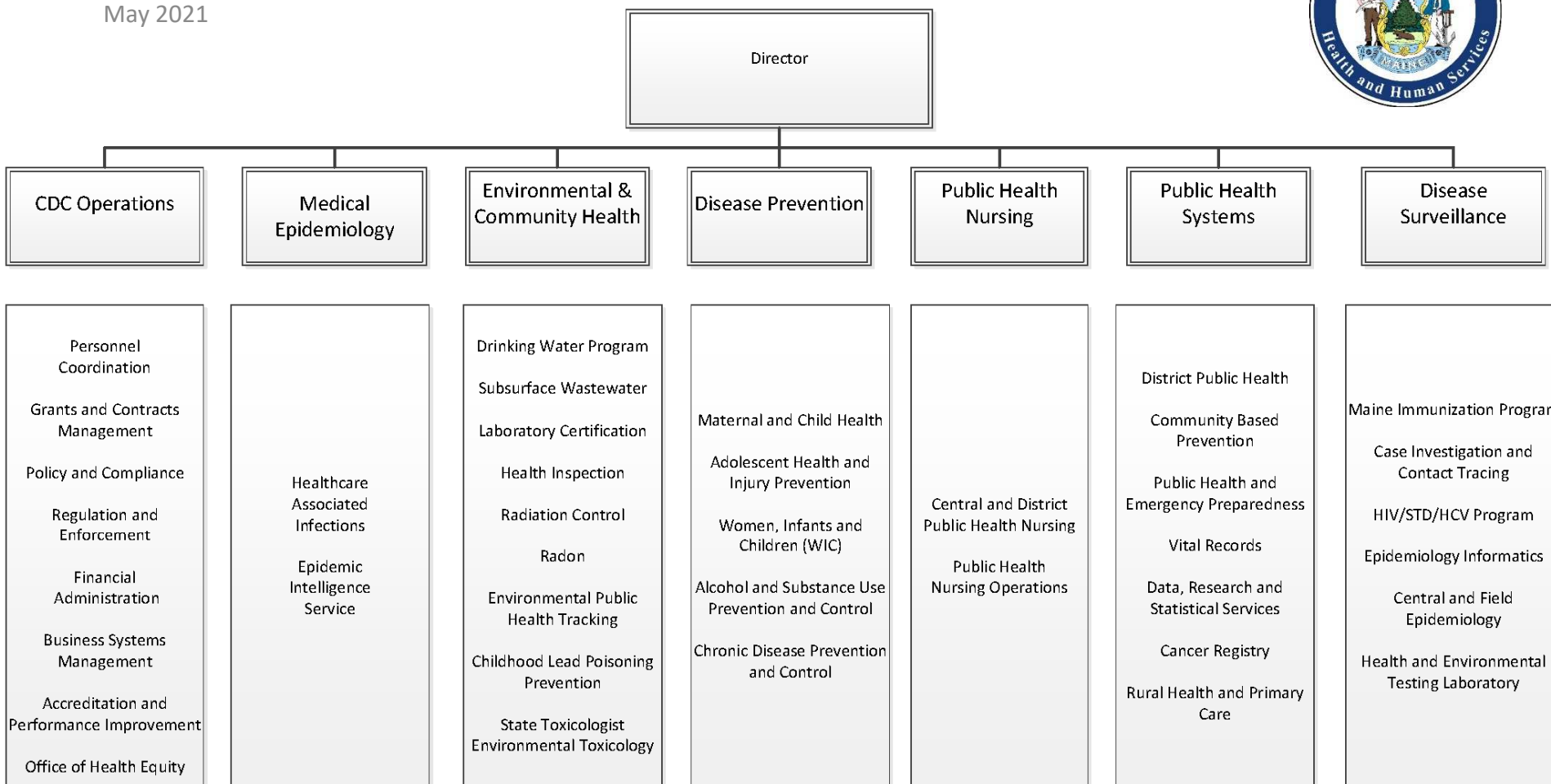


# Discussion

- Rebuilding Maine CDC
- Areas of Interest
  - Health Disparities
  - Public Health Infrastructure

# Maine CDC Organizational Chart

May 2021



# Rebuilding Maine CDC

- CDC remains in pandemic response mode – ramping some activities down
- Leaders and leadership
- Support from Mills Administration
- Created a standalone PHN Division at CDC
- Hired new PHN Associate Director
- Legislative requirement to support and fund 50 PHNs  
Funding cannot be used for any other purpose

# COVID Staffing and Beyond

- Support and partnership with Commissioner Lambrew, other state leaders and Governor Mills during COVID
- Significant financial and staff support for Epi, HETL, and Health Inspection Program
- Governor's 2022-2023 Budget
  - Biennial
  - Change Package
  - Temporary/Contracted staff
- Restore Office of Population Health Equity
- ARPA/CDC \$8.8m grant for PH Workforce

# Health Disparities

*The pandemic and associated economic disruption exposed health inequities and exacerbated social needs for many in Maine. How is Maine CDC (and Maine DHHS) thinking about and responding to these issues?*

- Recognized disparity early on
- Understand limited data
- Targeted outreach in 2020 to immigrant community members for quarantine and isolation social supports, funding for CBOs, prevention, education, social supports
- Continued support in 2021 – testing, social supports, and wrap around services for underserved communities
- Specific HE allocations in US CDC Vaccine Grants

# National Initiative to Address COVID-19 Health Disparities

Focus: high-risk and underserved populations, including racial and ethnic minority groups and rural communities

- \$32m Health Disparities Grant - US CDC rural carve out
  - Reduce COVID 19 related disparities among high-risk and underserved
  - Increase and improve data collection and reporting
  - Build, leverage, and expand infrastructure support for C-19 prevention
  - Mobilize partners and collaborators to advance health equity
- Awaiting final approval from US CDC

# Public Health Infrastructure

*How has COVID-19 and our public-private response shaped Maine CDC's thinking about public health infrastructure needs in Maine?*

- Need all partners
- Includes governmental and non-governmental agencies working for the same purpose
- Re-invest in the public health infrastructure established in 2009
- MRS Title 22, Chapter 152- Establishes 9 Public Health Units
  - 8 Geographic Public Health Units
  - 1 Tribal Public Health Unit



# Public Health Units (PHUs)

- Improve the efficiency of the administration and coordination of state public health programs, policies, and communications at the district and local levels
- Be sure state policy reflects the different needs of each district
- Most PHUs not fully realized
- District Liaison, Public Health Nurse(s), Field Epidemiologist, Public Drinking Water Inspector(s), Health Inspector(s)
- EXPAND to include Vaccine for Children Coordinator, COVID Vaccine Coordinator, District Public Health Educator
- District Liaison is senior leader within the PHU

# Questions?

**Nancy Beardsley, Deputy Director, Maine CDC**

**[Nancy.Beardsley@maine.gov](mailto:Nancy.Beardsley@maine.gov)**

