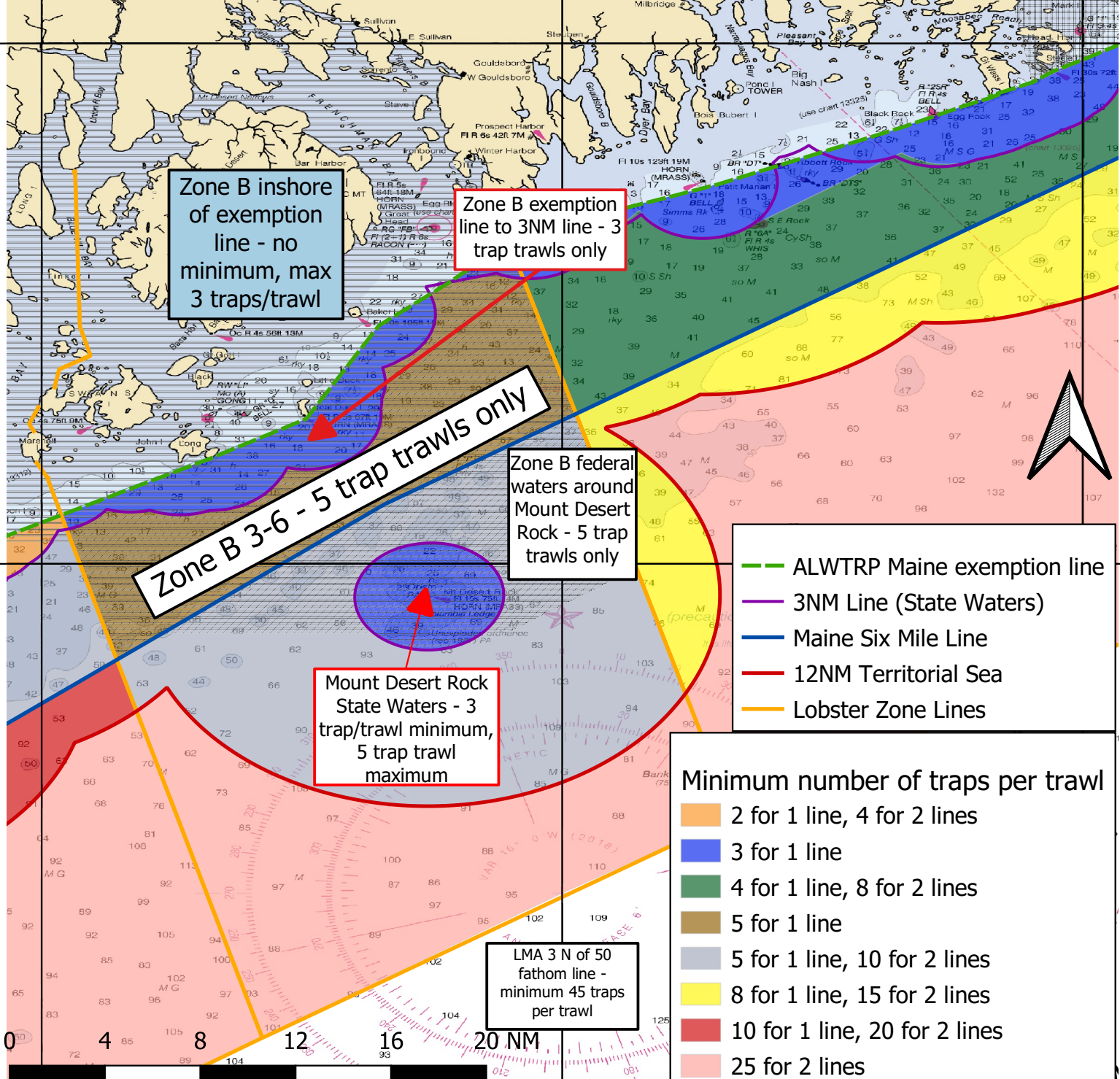


Maine Lobster Trawl Size Regulations - Zone B

NOTE C
SEPARATION SCHEMES
SEPARATION SCHEMES RECOMMENDED for use by all vessels traveling between the approaches to Portland Harbor and for routing traffic through the Bay of Fundy but are not applicable Rules of the Road. Separation zones are intended to be free of ship traffic. Separation zones should not be used as traffic lanes and separation zones use extreme caution. They have been established by the Department of Transport, Canada.

NOTE B
CAUTIONARY AREAS
CAUTIONARY AREAS consist of vessels operating between Portland Harbor or Boston Harbor. Mariners are advised to exercise extreme care in navigating.



Zone B inshore of exemption line - no minimum, max 3 traps/trawl

Zone B exemption line to 3NM line - 3 trap trawls only

Zone B 3-6 - 5 trap trawls only

Zone B federal waters around Mount Desert Rock - 5 trap trawls only

Mount Desert Rock State Waters - 3 trap/trawl minimum, 5 trap trawl maximum

LMA 3 N of 50 fathom line - minimum 45 traps per trawl

- ALWTRP Maine exemption line
- 3NM Line (State Waters)
- Maine Six Mile Line
- 12NM Territorial Sea
- Lobster Zone Lines

Minimum number of traps per trawl	
	2 for 1 line, 4 for 2 lines
	3 for 1 line
	4 for 1 line, 8 for 2 lines
	5 for 1 line
	5 for 1 line, 10 for 2 lines
	8 for 1 line, 15 for 2 lines
	10 for 1 line, 20 for 2 lines
	25 for 2 lines