

70°30'W

70°0'W

Maine Lobster Trawl Size Regulations - Zone G

Service advise all commercial and shellfish from the vicinity of the location of numerous toxic waste and

SEASONAL DIVIDED
Published in order to of the endangered is recommended age and upwards of 1 June through the area. (MSC IMO

R 922)
Prohibited within the
Jumping
leveling

facts

H2 derived from
spanning secular
section as variation
rising. If annual
on it is subtractive

WATER TOWER
8ft 13M HORN (MRASS)

CAUTION
Unexploded depth charge
Reported 1954

0 4 8 12 16 20 NM

70°30'W

70°0'W

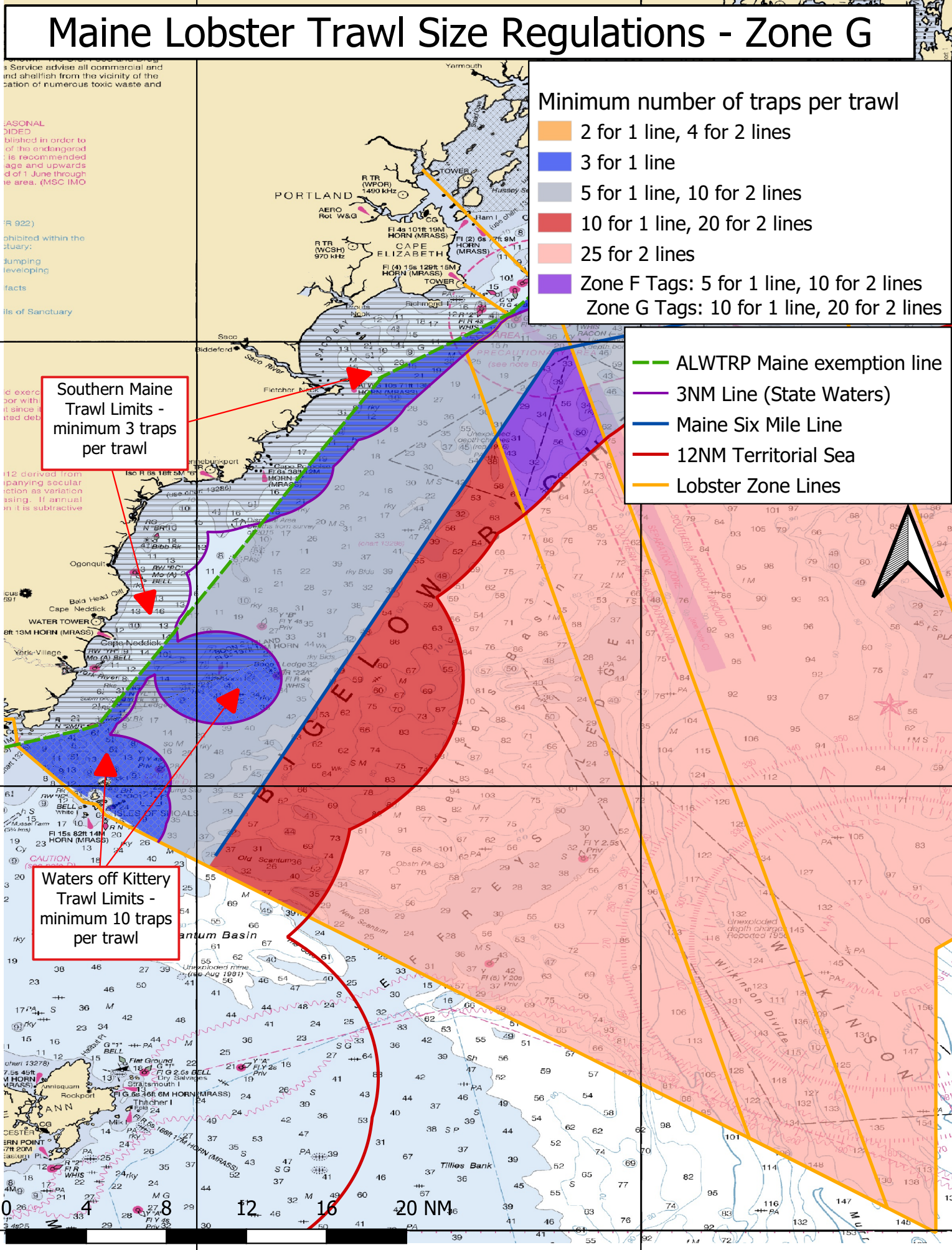
Minimum number of traps per trawl

- 2 for 1 line, 4 for 2 lines
- 3 for 1 line
- 5 for 1 line, 10 for 2 lines
- 10 for 1 line, 20 for 2 lines
- 25 for 2 lines
- Zone F Tags: 5 for 1 line, 10 for 2 lines
Zone G Tags: 10 for 1 line, 20 for 2 lines

- ALWTRP Maine exemption line
- 3NM Line (State Waters)
- Maine Six Mile Line
- 12NM Territorial Sea
- Lobster Zone Lines

Southern Maine
Trawl Limits -
minimum 3 traps
per trawl

Waters off Kittery
Trawl Limits -
minimum 10 traps
per trawl



43°30'N

43°0'N

42°30'N