

MAINE DEPARTMENT
OF EDUCATION (DOE)

Assessment Lunch & Learn Office Hours

February 14, 2024

Please post questions you may have in the chat box – we will work to answer them during the session and add them to a Q&A document.

We will begin shortly.

Presented by: The Assessment Team





Jodi Bossio-Smith
Director of Assessment
Interim Alternate and
ELP Assessments Coordinator



Krista Averill
General Assessments
Coordinator



Dr. Regina Lewis
NAEP & International Assessments



Leah Jarvis
Business Analyst



Kalua Wilson
Office Specialist

Welcome to the Maine DOE

Meet Our Team

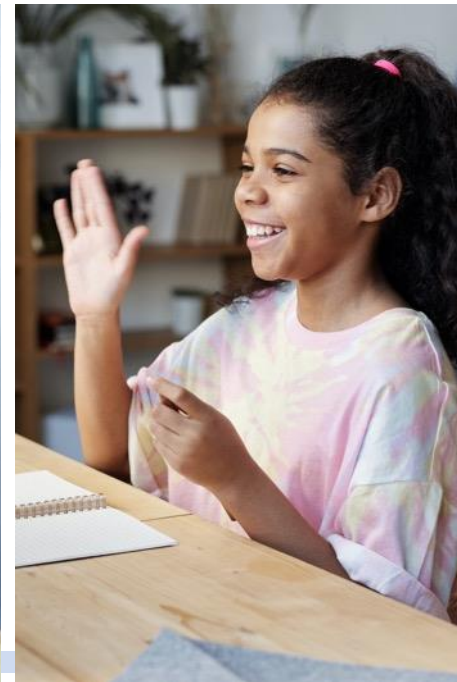
Assessment

Today's Agenda

General Updates:

- Maine Through Year and Maine Science Assessments
- National and International Assessments
- ELP Assessment
- MSAA

Mission & Vision



To promote the best learning opportunities for all Maine students by providing information, guidance, and support to our schools, educators, and leaders and by providing adequate and equitable school funding and resources.

Technical Assistance

[SAU Request Form for Technical Assistance](#)

Available to all SAUs upon request

Targeted technical assistance continues to focus on participation across the MEA



Assessment Name	Assessment Dates	Window	Delivery Method	Intended For
Access for ELLs (English Language Proficiency)	January 8, 2024 - March 8, 2024	9 Weeks	Kindergarten: Paper Grade 1-12: Online	English Learners K-12
Alternate Access for ELLs (English Language Proficiency)	January 8, 2024 - March 8, 2024	9 Weeks	Paper/Pencil	English Learners in Grades K-12 with Significant Cognitive Disabilities
Maine Through Year Assessment: Mathematics & Reading	Fall (Required): October 2, 2023 - November 3, 2023 Winter (Optional): January 2, 2024 - February 16, 2024 Spring (Required): April 22, 2024 - May 31, 2024	Fall: 4 Weeks Winter and Spring: 6 Weeks	Online	Students in Grades 3-8, & 2nd Year of High School
Maine Science Assessment	May 13, 2024 - May 24, 2024	2 Weeks	Online	Grades 5, 8, & 3rd Year of High School
MSAA: Mathematics & ELA/Literacy	March 11, 2024 - April 26, 2024	6 Weeks	Online	Students with Significant Cognitive Disabilities; Grades 3-8, & 3rd Year of High School
MSAA Science	March 11, 2024 - April 26, 2024	6 Weeks	Online	Students with Significant Cognitive Disabilities; Grades 5, 8, & 3rd Year of High School

Maine Educational Assessments (MEA)

2023-24 Assessment Calendar

National & International 2023-24 Assessment Calendar

Assessment Name	Assessment Dates	Intended For
National Assessment of Educational Progress (NAEP)	January 29, 2024 - March 22, 2024	Mathematics and Reading Grades 4, 8, & 12 and Science Grade 8 at sampled schools
Teaching and Learning International Survey (TALIS)	March - April 2024	International survey of principals and teachers at grades 7, 8, and 9 at sampled schools
Program for International Students Assessment (PISA) Field Test	March - April 2024	Math, Reading, and Science age 15 at sampled schools
International Computer Literacy & Information Literacy Study (ICILS)	N/A	Grade 8, Computer & Information Literacy at sampled schools
Progress in International Reading Literacy (PIRLS)	N/A	Grade 4 Reading achievement in literacy experience and reading to acquire and use information at sampled schools
Trends in Mathematics & Science Study (TIMSS)	N/A	Grades 4 & 8 Mathematics & Reading at sampled schools

Data Requests

- Suppressed data for 2017-18 to 2022-23 are currently available in the [ESSA Dashboard](#).
- Legacy data (suppressed data for years prior to those available in the ESSA Dashboard) are available [here](#).
- To access unsuppressed data from these years, please use the “Submit a Data Request” link at the bottom of the [Data Warehouse page](#).
- SAUs have access to
 - Spring 2023 Maine Science Assessment data in the Kite Reporting Platform
 - Maine Through Year
 - Spring 2023, Fall 2023, and (if you have assessed) Winter 2024 Maine Through Year Assessment data in the Acacia Platform
 - Spring 2023 and Fall 2023 Maine Through Year RIT data in MAP Growth reports, if students were rostered by the SAU
 - Winter 2024 Maine Through Year RIT data in MAP Growth reports, if the student was rostered by the SAU in the fall
 - Spring 2023 WIDA ACCESS data in WIDA AMS

Maine Through Year Assessment

Optional Winter Administration: Closes February 16, 2024

Concerns from the Field & NWEA's Response

“The test design administered on NWEA’s testing platform in fall and winter administrations in Maine is – for all intents and purposes – the same test model as currently administered in our MAP Growth assessment. The primary difference is that the delivery engine is our Acacia state platform, which allows the assessment to be more easily administered as a state-level test to aggregate data and provide additional accessibility features for students.

In all other matters, there is no material difference in the test design. The fall and winter assessments in the Maine Through Year Assessment follow the same test design, adaptive algorithms, and scoring rules as our MAP Growth assessment.”

Maine Through Year Assessment

Optional Winter Administration: Closes February 16, 2024

Availability of MAP Growth Reports

- Students who were successfully included in the MAP Growth-Acacia sync after the fall administration have had their Through Year Assessment RIT scores synced to MAP Growth reports within 72 hours.
- There are some unresolved issues with the final sync that will move ALL student RIT score results data to MAP Growth reports, and these issues prevent Maine DOE from turning on the sync for all students until after the administration window closes.
- NWEA expects to have resolved those issues by April 22, resulting in generation of MAP Growth reports within 72 hours for ALL students being assessed in the spring.

Maine Through Year Assessment

Optional Winter Administration: Closes February 16, 2024

SAU Data Clean-Up Window

- Official dates: February 26 – March 1, 2024
- SAU data clean-up is essential to ensure that ALL students' Through Year Assessment RIT results are integrated into MAP Growth reports.
- **Most** clean-up activities can be started now!
- [SAU Data Clean-Up Window Checklist](#)

Maine Through Year Assessment

Maine Through Year Assessment Purpose Survey

Intended audience: Superintendent, Assistant Superintendent, Curriculum Coordinator, District Assessment Coordinator

- **ONE submission per SAU**

Topic: *Is the Maine Through Year Assessment meeting its intended purposes?*

Link: <https://forms.office.com/g/TUdNVgEvUi> - Sent to superintendents and District Assessment Coordinators on February 13th via email

Maine Through Year Assessment

Spring 2024 Assessment Coordinator Trainings – Save the Date!

Thursday, March 21

- 3:00-4:30 PM ([Registration Link](#))

Tuesday, March 26

- 3:00-4:30 PM ([Registration Link](#))

Both trainings are the same. Assessment Coordinators need only to attend one.

The March 26 session will be recorded, and the recording will be posted on the [NWEA Connection Page](#) as well as [Maine DOE's Through Year Assessment webpage](#).

Maine Through Year Assessment

Math Reference Sheet Translations

The Math Reference Sheet has been translated into Maine's top languages and can now be printed for multilingual learners.

You can find the translations under the Content drop-down menu on our website: https://www.maine.gov/doe/Testing_Accountability/MECAS/NWEA

[Math Reference Sheet](#): This reference/formula sheet is provided to all students on the math assessment in the fall, winter (optional), and spring. This is accessible within the assessment platform, and paper copies may be distributed to students. Please see below for **Math Reference Sheet translations**:

- [Arabic](#)
- [Chinese](#)
- [French](#)
- [Khmer](#)
- [Kinyarwanda](#)
- [Lingala](#)
- [Portuguese](#)
- [Somali](#)
- [Spanish](#)
- [Vietnamese](#)

Maine Through Year Assessment

Professional Learning Opportunities

NWEA PL Opportunities: *Spring flyer available later this month!*

Understanding Scores from the Maine Through Year Assessment

During this virtual workshop, participants will learn about the characteristics and purposes of the two score types produced by the Maine Through Year Assessment. Participants will interact with student RIT score and Maine-specific scale score data to develop a deeper understanding of the purpose and value of, as well as the similarities and differences between, these two measures of student performance.

- **NEW!** February 27, 3:30-5:00 PM ([Registration Link](#))
- **NEW!** March 7, 3:30-5:00 PM ([Registration Link](#))

Maine Through Year Assessment: *Whom do I contact?*

NWEA Maine Partner Support

[\(855\) 430-1777](tel:8554301777)

techsupport@nwea.org

- Technical issues with the Acacia platform
- Technical issues with the State Solutions Secure Browser
- Technical issues with the MARC (MAP Growth) platform, including rostering in MARC
- SAU Data Clean-Up Tasks

Maine DOE MEDMS Helpdesk

MEDMS.Helpdesk@maine.gov

[\(207\) 624-6896](tel:2076246896)

- Fixing a student who incorrectly appears or does not appear in your assessment roster in NEO
- Help determining if a student is eligible for the Maine Through Year Assessment, based on information entered by the SAU into Synergy

Maine DOE Assessment Team

Krista.Averill@maine.gov

[\(207\) 215-6528](tel:2072156528)

- Questions related to assessment content, accessibility, scoring, and reporting
- Policy-related questions
- Fixing a student who appears on your assessment roster in NEO but does not appear in Acacia
 - *Please wait at least 36 hours after making the update in Synergy.*
 - cc: Kalua.Wilson@maine.gov
- Any problems that NWEA Maine Partner Support or MEDMS Helpdesk are not able to resolve

Maine Science Assessment

Spring 2023 Reports

Reporting Platform and Score Interpretation Guides

- The [Reporting Platform User Guide](#) provides directions for adding, editing, and removing District Users and Building Users in the Kite platform as well as how to access the various reports within the platform.
- The [Score Interpretation Guide](#) provides information on scaled scores, achievement levels, subdiscipline reporting, overview of reports (ISR, school summary, SAU summary, and roster report), and directions for importing and filtering of CSV roster files.

Getting Help Accessing Spring 2023 Maine Science Assessment Reports: Kite Service Desk

Resource	Location
Kite Service Desk Phone Number	855-277-9752
Kite Service Desk Email Address	Kite-support@ku.edu
Kite Live Chat in the Kite Educator Portal	https://educator-testlet.kiteaai.org/
Hours	8:00 am to 6:00 pm M-F Eastern Time Zone

Maine Science Assessment

FAQ: How do I access my account in the ADAM platform?

All existing DAC information is removed from the ADAM (Assessment Delivery and Management) platform each year to ensure that the most up-to-date information is available during the administration and defunct accounts are removed.

Current DACs will receive an automated email to set up access to the platform for this academic year in early March.

Maine Science Assessment

Spring 2024 Trainings – Save the Date!

Lockdown Browser Installation

- Thursday, March 28th, 3:00-4:30 PM ([Registration Link](#))

Rostering in ADAM & Accessibility

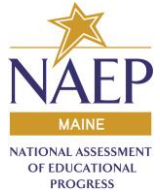
- Thursday, April 4th, 3:00-4:30 PM ([Registration Link](#))

Administration, Proctoring, & Accessibility

- Thursday, April 25th, 3:00-4:30 PM ([Registration Link](#))

All sessions will be recorded, and the recording will be posted on the Maine Science Support webpage: <https://mescience.zendesk.com/hc/en-us>

National and International Assessments - NAEP



Administration window is open until March 22, 2024

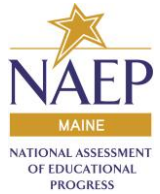
Urgent:

- Verify that no new students have been added
- Provide Student Information and Assessment Logistics
- Notify parents/guardians - [Translations available](#)
- Run Connectivity test one week prior to scheduled assessment date (for schools designated as School Wi-Fi mode).
- Be onsite for assessment administration

***In person Technical Assistance Assessment Administration Observations will be conducted ***



National and International Assessments - NAEP



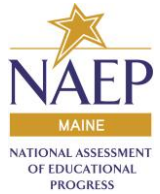
[Inclusion and Accommodations \(policies on webpage\)](#)

Clarifications & Hints

- No manipulatives or multiplication tables allowed for Math -
 - "Calculator version" of assessment is available upon request
- No text to speech or human reader for Reading
 - Available to all students in Math
- Individual or small group setting select "Separate Location"
- Large Print – select "Magnification"
- Clarify/verify understanding of directions – available to all students
 - Students instructed to raise hand for clarification/explanation

***based on accommodation "other" requests received ***

National and International Assessments - NAEP



Whom do I contact?

NAEP Field Representative

Contact using information provided in NAEP AMS and via Email

- School Delay or closing
- Need to reschedule
- Change in Assessment Logistics

Maine DOE NAEP Coordinator

(207) 530-1355

regina.lewis@maine.gov

- AMS account creation
- Acquiring AMS access for additional staff
- Questions related to assessment accessibility, exclusion, and refusals
- Policy related questions
- Any problems that NAEP Field Representative and NAEP Helpdesk are unable to answer

NAEP AMS Helpdesk

(800) 283-6237

naephelp@westat.com

- Technical issues with AMS
- Password recovery not working
- Unable to select or manage tiles
- Student name changes

ACCESS and Alternate ACCESS for ELLs

Maine's general and alternate assessments of English language proficiency, for students identified as multilingual learners

The ACCESS and Alternate ACCESS window has now been extended through March 8th, 2024. Maine SAUS were notified via email to DACs and ESOL Coordinators, as well as via the ESOL listserv.

The extension is based on feedback from Maine SAUs about a challenging administration window. The change in dates will have no downstream effects to file or reporting delivery.

ACCESS and Alternate ACCESS for ELLs

Maine's general and alternate assessments of English language proficiency, for students identified as multilingual learners

Post-administration dates:

4/30/24: Data files and reports available for SAU download in WIDA AMS

5/16/2024: Printed reports received by Maine SAUs

WIDA ACCESS & Alternate ACCESS

Whom do I contact?

WIDA Client Services Center

1-866-276-7735

Help@WIDA.us

- WIDA Secure Portal account creation
- Assessment training modules
- Self-paced e-learning resources

Data Recognition Corporation (DRC)

1-855-787-9615

WIDA@datarecognitioncorp.com

- WIDA AMS account creation
- Technical issues with the WIDA AMS platform, including finding students, assigning accommodations, and creating test sessions
- Technical issues with the installation of the DRC lockdown browser

Maine DOE Assessment Team

(207) 530-1462

Jodi.Bossio-smith@maine.gov

- Questions related to assessment coordination, administration, and accessibility
- Policy-related questions
- Fixing a student who appears on your assessment roster in NEO but does not appear in WIDA AMS
 - *Please wait at least 36 hours after making the update in Synergy.*
 - cc: Kalua.Wilson@maine.gov
- Any problems that WIDA and DRC Customer Services are unable to answer

Multi-State Alternate Assessment

Maine's alternate assessments based on alternate academic achievement standards in reading, math and science

Administration Window:
March 11 – April 26, 2024

- Test Administration Manual and User Guides for test coordinators and administrators are now available on the [Maine DOE/MSAA webpage](#)
- DACS who need district-level access to the alternate assessment platform should email jodi.bossio-smith@maine.gov
- User accounts for TCs go live on 2/20. Training modules will be available in the platform on 2/26.

**Assessment Team
Lunch 'n' Learn Office Hours**

Q&A



Stay Connected!

Find Us Online!



www.maine.gov/doe



@MaineDOEComm



@mainedepted



@mdoenews



@MaineDepartmentofEducation1