

MAINE DEPARTMENT
OF EDUCATION (DOE)

Assessment Lunch & Learn Office Hours

March 13, 2024

Please post questions you may have in the chat box – we will work to answer them during the session and add them to a Q&A document.

We will begin shortly.

Presented by: The Assessment Team





Jodi Bossio-Smith
Director of Assessment
Interim Alternate and
ELP Assessments Coordinator



Krista Averill
General Assessments
Coordinator



Dr. Regina Lewis
NAEP & International Assessments



Leah Jarvis
Business Analyst



Kalua Wilson
Office Specialist

Welcome to the Maine DOE

Meet Our Team

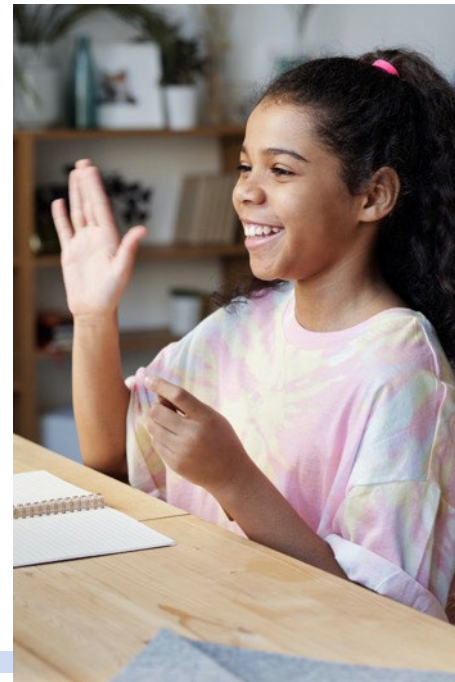
Assessment

Today's Agenda

General Updates:

- Maine Through Year and
Maine Science
Assessments
- National and
International
Assessments
- ELP Assessment
- MSAA

Mission & Vision



To promote the best learning opportunities for all Maine students by providing information, guidance, and support to our schools, educators, and leaders and by providing adequate and equitable school funding and resources.

Technical Assistance

[SAU Request Form for Technical Assistance](#)

Available to all SAUs upon request

Targeted technical assistance continues to focus on participation across the MEA



Assessment Name	Assessment Dates	Window	Delivery Method	Intended For
Access for ELLs (English Language Proficiency)	January 8, 2024 - March 8, 2024	9 Weeks	Kindergarten: Paper Grade 1-12: Online	English Learners K-12
Alternate Access for ELLs (English Language Proficiency)	January 8, 2024 - March 8, 2024	9 Weeks	Paper/Pencil	English Learners in Grades K-12 with Significant Cognitive Disabilities
Maine Through Year Assessment: Mathematics & Reading	Fall (Required): October 2, 2023 - November 3, 2023 Winter (Optional): January 2, 2024 - February 16, 2024 Spring (Required): April 22, 2024 - May 31, 2024	Fall: 4 Weeks Winter and Spring: 6 Weeks	Online	Students in Grades 3-8, & 2nd Year of High School
Maine Science Assessment	May 13, 2024 - May 24, 2024	2 Weeks	Online	Grades, 5, 8, & 3rd Year of High School
MSAA: Mathematics & ELA/Literacy	March 11, 2024 - April 26, 2024	6 Weeks	Online	Students with Significant Cognitive Disabilities; Grades 3-8, & 3rd Year of High School
MSAA Science	March 11, 2024 - April 26, 2024	6 Weeks	Online	Students with Significant Cognitive Disabilities; Grades 5, 8, & 3rd Year of High School

Maine Educational Assessments (MEA)

2023-24 Assessment Calendar

National & International 2023-24 Assessment Calendar

Assessment Name	Assessment Dates	Intended For
National Assessment of Educational Progress (NAEP)	January 29, 2024 - March 22, 2024	Mathematics and Reading Grades 4, 8, & 12 and Science Grade 8 at sampled schools
Teaching and Learning International Survey (TALIS)	March - April 2024	International survey of principals and teachers at grades 7, 8, and 9 at sampled schools
Program for International Students Assessment (PISA) Field Test	March - April 2024	Math, Reading, and Science age 15 at sampled schools
International Computer Literacy & Information Literacy Study (ICILS)	N/A	Grade 8, Computer & Information Literacy at sampled schools
Progress in International Reading Literacy (PIRLS)	N/A	Grade 4 Reading achievement in literary experience and reading to acquire and use information at sampled schools
Trends in Mathematics & Science Study (TIMSS)	N/A	Grades 4 & 8 Mathematics & Reading at sampled schools

Data Requests

- Suppressed data for 2020-21 to 2022-23 are currently available in the [ESSA Dashboard](#).
- Legacy data (suppressed data for some years prior to those available in the ESSA Dashboard) are available [here](#).
 - Legacy data currently posted does not include 2015-16 to 2018-19.
- To access data from unavailable academic years and/or unsuppressed data, please use the “Submit a Data Request” link at the bottom of the [Data Warehouse page](#).
- SAUs have access to
 - Spring 2023 Maine Science Assessment data in the Kite Reporting Platform.
 - Maine Through Year Assessment data in Acacia and MAP Growth (optional).
 - Spring 2023 WIDA ACCESS data in WIDA AMS.

Maine Through Year Assessment

Optional Winter Math Administration

[Memorandum from NWEA – Key Points](#)

In response to feedback from stakeholders, an investigation in Winter 2024 Mathematics results was conducted, with a focus on grades 3 and 4. The investigation looked both at specific students' results as well as the entire population of students assessed.

Takeaways:

- The test engine performed as designed and correctly administered all assessments.
- The adaptive testing algorithm selected atypical test items for a small group of students – usually in the lowest decile – as they proceeded to the end of the test.
- Reason: The population exposure control limits how many students can see each question. This narrows the pool of questions a student may receive, resulting in questions towards the end of the assessment being above the student's estimated ability level. The “weight” of this exposure control was chosen by NWEA based on psychometric analyses and can be changed.

Maine Through Year Assessment

Optional Winter Math Administration

[Memorandum from NWEA – Key Points \(continued\)](#)

- The reported RIT score remains the best estimate of the student’s ability level. The question selection may increase the standard error of measurement more than would be expected of a test of the same length.
- Solution for Spring 2024: NWEA will run a simulation that removes the population exposure control and share with Maine DOE any potential problems that may occur from the removal. Maine DOE will then decide whether the population exposure control will be removed or reduced.
- Discussions for 2024-25: Maine DOE will discuss the possibility of expanding the Maine Through Year Assessment question bank with NWEA’s Content Solutions team. With a larger question bank, the less likely students will see the same question.

Maine Through Year Assessment

[Accessing Maine Through Year Assessment Data for the Comprehensive Needs Assessment](#)

A guide on independently accessing the Student Score Data File (SSDF) for assessment data for specific grade levels and student groups:

- Please note that homeless and migrant students are not reportable categories in the SSDF.
- Remember to consider all students, including your alternate assessment participants, when completing your CNA.
- [Rita Pello](#) and [Jess Caron](#), Title IA Program Specialists & Regional Program Managers, can provide further guidance regarding completion of the CNA template.

Maine Through Year Assessment

Spring 2024 Assessment Coordinator Trainings – Save the Date!

Thursday, March 21

- 3:00-4:30 PM ([Registration Link](#))

Tuesday, March 26

- 3:00-4:30 PM ([Registration Link](#))

Both trainings are the same. Assessment Coordinators need only to attend one.

The March 26 session will be recorded, and the recording will be posted on the [NWEA Connection Page](#) as well as [Maine DOE's Through Year Assessment webpage](#).

Maine Through Year Assessment

Preparing New Proctors

All proctors are required to complete the following once per academic year.

Assessment Security Training

- [Assessment Security Overview Training Webisode](#) (5 minutes)
- [Assessment Irregularities! What Now? Security Training Webisode](#) (3 minutes)

MEA Assessment Security & Data Privacy Agreement

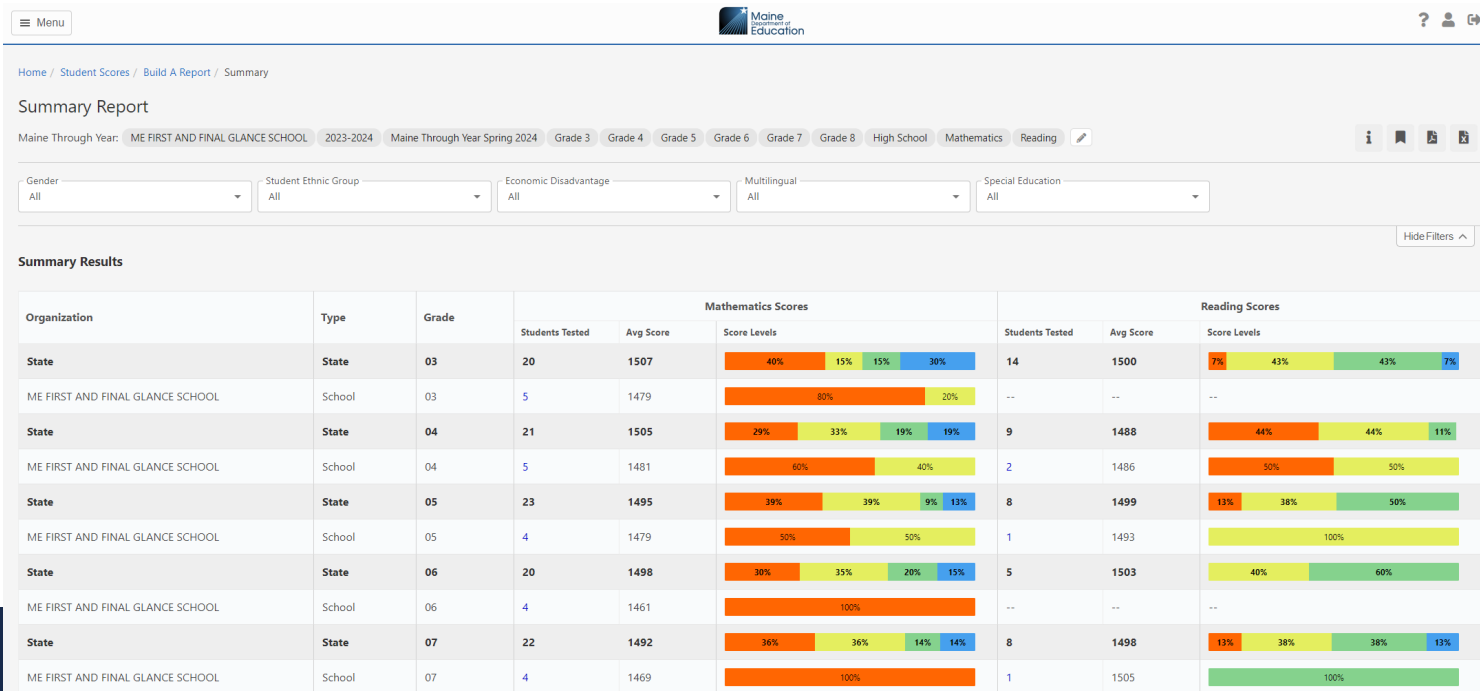
Appendix E (page 30) of the [Assessment Security Handbook](#)

[Maine Through Year Assessment Proctor Training Video](#) (9 minutes)

Maine Through Year Assessment

Spring 2024 – New Acacia Reports Available April 1!

Comparison Report: Spring Only



Maine Through Year Assessment

Spring 2024 – New Acacia Reports Available April 1!

Student Results File: Fall, Winter, & Spring

Downloadable csv

Similar to Student Score Data File, but regenerates every few hours throughout the assessment window

Data includes:

- Student data (enrollment, demographics, etc.)
- Test event data (including student engagement metrics)
- Overall scale score reporting category data
- RIT and instructional area data
- Accommodations

Maine Through Year Assessment

Professional Learning Opportunities

NWEA PL Opportunities: *The spring flyer is now available with sessions in March, April, and May!*

Not Recorded

- Using Achievement Levels to Ensure Classroom Rigor
- Using Multiple Data Sources to Inform Instruction

Recording Posted in [NWEA PLO](#)*

- Accessing Reports – Teachers
- Accessing Reports – Administrators

*For District Assessment Coordinators: [PLO Add Member Instructions](#)

Maine Through Year Assessment

Math Reference Sheet Translations

The Math Reference Sheet has been translated into Maine's top languages and can now be printed for multilingual learners.

You can find the translations under the Content drop-down menu on our website: https://www.maine.gov/doe/Testing_Accountability/MECAS/NWEA

[Math Reference Sheet](#): This reference/formula sheet is provided to all students on the math assessment in the fall, winter (optional), and spring. This is accessible within the assessment platform, and paper copies may be distributed to students. Please see below for **Math Reference Sheet translations**:

- [Arabic](#)
- [Chinese](#)
- [French](#)
- [Khmer](#)
- [Kinyarwanda](#)
- [Lingala](#)
- [Portuguese](#)
- [Somali](#)
- [Spanish](#)
- [Vietnamese](#)

Maine Through Year Assessment

Technology Updates for macOS Users

- [macOS NWEA State Solutions Secure Browser Bulletin - March 2024](#)
- [Additional macOS secure browser installation steps](#)

Note: The [NWEA System and Technology Guide](#) is updated annually by NWEA. The last update was September 2023.

Maine Through Year Assessment: *Whom do I contact?*

NWEA Maine Partner Support

(855) 430-1777

techsupport@nwea.org

- Technical issues with the Acacia platform
- Technical issues with the State Solutions Secure Browser
- Technical issues with the MARC (MAP Growth) platform, including rostering in MARC
- Support with pre-administration activities in the Acacia platform (e.g., creating groups or assigning accommodations)
- Support administering the online assessment
- Information regarding procedures for students taking accommodated paper-based forms
- SAU Data Clean-Up Tasks

Maine DOE MEDMS Helpdesk

MEDMS.Helpdesk@maine.gov

(207) 624-6896

- Fixing a student who incorrectly appears or does not appear in your assessment roster in NEO
- Help determining if a student is eligible for the Maine Through Year Assessment, based on information entered by the SAU into Synergy

Maine DOE Assessment Team

Krista.Averill@maine.gov

(207) 215-6528

- Questions related to assessment content, accessibility, scoring, and reporting
- Policy-related questions
- Fixing a student who appears on your assessment roster in NEO but does not appear in Acacia
 - *Please wait at least 36 hours after making the update in Synergy.*
 - cc: Kalua.Wilson@maine.gov
- Any problems that NWEA Maine Partner Support or MEDMS Helpdesk are not able to resolve

Maine Science Assessment

Spring 2024 Trainings – Save the Date!

Lockdown Browser Installation

- Thursday, March 28th, 3:00-4:30 PM ([Registration Link](#))

Rostering in ADAM & Accessibility

- Thursday, April 4th, 3:00-4:30 PM ([Registration Link](#))

Administration, Proctoring, & Accessibility

- Thursday, April 25th, 3:00-4:30 PM ([Registration Link](#))

All sessions will be recorded, and the recording will be posted on the Maine Science Support webpage: <https://mescience.zendesk.com/hc/en-us>

Maine Science Assessment

Resources

Manuals and Guides

The [Spring 2024 manuals and guides](#) are now live on the [Maine Science Support Page](#).

Practice Tests

To access the practice tests, please use the browser-based ADAM, <https://adamexam.com/tester/>, and enter the test codes found [here](#).

Additional Resources

Additional Maine Science Assessment resources, including released items and achievement level descriptors, can be found on Maine DOE's [Maine Science Assessment](#) webpage.

Maine Science Assessment: *Whom do I contact?*

Maine Science Support

- Technical issues with the ADAM lockdown browser or platform
- Support with pre-administration activities in the ADAM platform (e.g., creating classes or assigning accommodations)
- Support administering the online assessment, both within the proctor dashboard and the ADAM lockdown browser
- Information regarding procedures for students taking accommodated paper-based forms
- Fixing a student who appears on your assessment roster in NEO but does not appear in ADAM (*The team will seek Maine DOE approval.*)

Kite Service Desk

Kite-support@ku.edu

(855) 277-9752

- Accessing reports

Maine DOE MEDMS Helpdesk

MEDMS.Helpdesk@maine.gov

(207) 624-6896

- Fixing a student who incorrectly appears or does not appear in your assessment roster in NEO
- Help determining if a student is eligible for the Maine Through Year Assessment, based on information entered by the SAU into Synergy

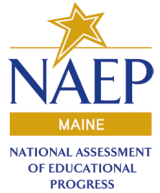
Maine DOE Assessment Team

Krista.Averill@maine.gov

(207) 215-6528

- Questions related to assessment content, accessibility, scoring, and reporting
- Policy-related questions
- Any problems that Maine Science Support, Kite Service Desk, or MEDMS Helpdesk are not able to resolve

National and International Assessments - NAEP



Administration window closes – March 22, 2024

NAEP Update:

Last Maine school scheduled for assessment administration on March 19th
School Wi-Fi went very well
>88% percent of schools allowed for NAEP administration on School Wi-Fi

Thank you to all of the schools and students that participated in NAEP!

***In person Technical Assistance Assessment Administration Observations provided the opportunity to meet many school coordinators, principals, and technology staff.
Thank you!*



National and International Assessments - NAEP



Whom do I contact?

NAEP Field Representative

Contact using information provided in NAEP AMS and via Email

- School Delay or closing
- Need to reschedule
- Change in Assessment Logistics

Maine DOE NAEP Coordinator

(207) 530-1355

regina.lewis@maine.gov

- AMS account creation
- Acquiring AMS access for additional staff
- Questions related to assessment accessibility, exclusion, and refusals
- Policy related questions
- Any problems that NAEP Field Representative and NAEP Helpdesk are unable to answer

NAEP AMS Helpdesk

(800) 283-6237

naephelp@westat.com

- Technical issues with AMS
- Password recovery not working
- Unable to select or manage tiles
- Student name changes

ACCESS and Alternate ACCESS for ELLs

Maine's general and alternate assessments of English language proficiency, for students identified as multilingual learners

3/12/24	Deadline for Shipping Completed Test Materials to DRC
4/30/24	ACCESS Reports and Data Files Available – Online in WIDA AMS
5/16/24	ACCESS Reports Available in District – Printed
9/13/24	WIDA Alternate ACCESS Reports and Data Files Available – Online in WIDA AMS
10/2/24	WIDA Alternate ACCESS Reports Available in District - Printed

WIDA ACCESS & Alternate ACCESS

Whom do I contact?

WIDA Client Services Center

1-866-276-7735

Help@WIDA.us

- WIDA Secure Portal account creation
- Assessment training modules
- Self-paced e-learning resources

Data Recognition Corporation (DRC)

1-855-787-9615

WIDA@datarecognitioncorp.com

- WIDA AMS account creation
- Technical issues with the WIDA AMS platform, including finding students, assigning accommodations, and creating test sessions
- Technical issues with the installation of the DRC lockdown browser

Maine DOE Assessment Team

(207) 530-1462

Jodi.Bossio-smith@maine.gov

- Questions related to assessment coordination, administration, and accessibility
- Policy-related questions
- Fixing a student who appears on your assessment roster in NEO but does not appear in WIDA AMS
 - *Please wait at least 36 hours after making the update in Synergy.*
 - cc: Kalua.Wilson@maine.gov
- Any problems that WIDA and DRC Customer Services are unable to answer

Multi-State Alternate Assessment

Maine's alternate assessments based on alternate academic achievement standards in reading, math and science

Administration Window:
March 11 – April 26, 2024

- Administration opened on March 11th
- Technical assistance occurring across Maine
- Districts without Test Coordinators and eligible students – email sent 3/7/24 to both Special Ed Directors and DACs
- Collaboration with Office of Special Services and Inclusive Education to add alternate assessment participation as a finding to the monitoring process

Multi-State Alternate Assessment

Whom do I contact?

MSAA Service Desk

866-834-8879

MSAAServiceCenter@cognia.org

[Live Chat available](#)

- Issues with the platform
- Questions around account permissions/creation
- Mandatory training modules and quiz
- Help logging in

Maine DOE Assessment Team

(207) 530-1462

Jodi.Bossio-smith@maine.gov (interim coordinator)

- Questions related to assessment coordination, administration, and accessibility
- Policy-related questions
- Fixing a student who appears on your assessment roster in NEO but does not appear in the MSAA Platform
 - *Please wait at least 36 hours after making the update in Synergy.*
- Any problems that MSAA Service Desk is unable to answer

**Assessment Team
Lunch 'n' Learn Office Hours**

Q&A



Stay Connected!

Find Us Online!



www.maine.gov/doe



@MaineDOEComm



@mainedepted



@mdoenews



@MaineDepartmentofEducation1