

**VIOLENT CRIMES**

Crimes of violence involve the element of personal confrontation between the perpetrator and victim and entail the use or threat of violence. By their very nature, violent crimes — murder, rape, robbery and aggravated assault — are considered more serious than property crimes. The total number indicates only the number of incidents reported to police and does not reflect the number of criminals who committed them or the number of injuries inflicted.

During the year 2006, violent crimes showed an increase from the previous year. There were 1,524 reported offenses during 2006 — compared with 1,490 for 2005. This increase of 34 crimes reported represents an increase of 2.3%.

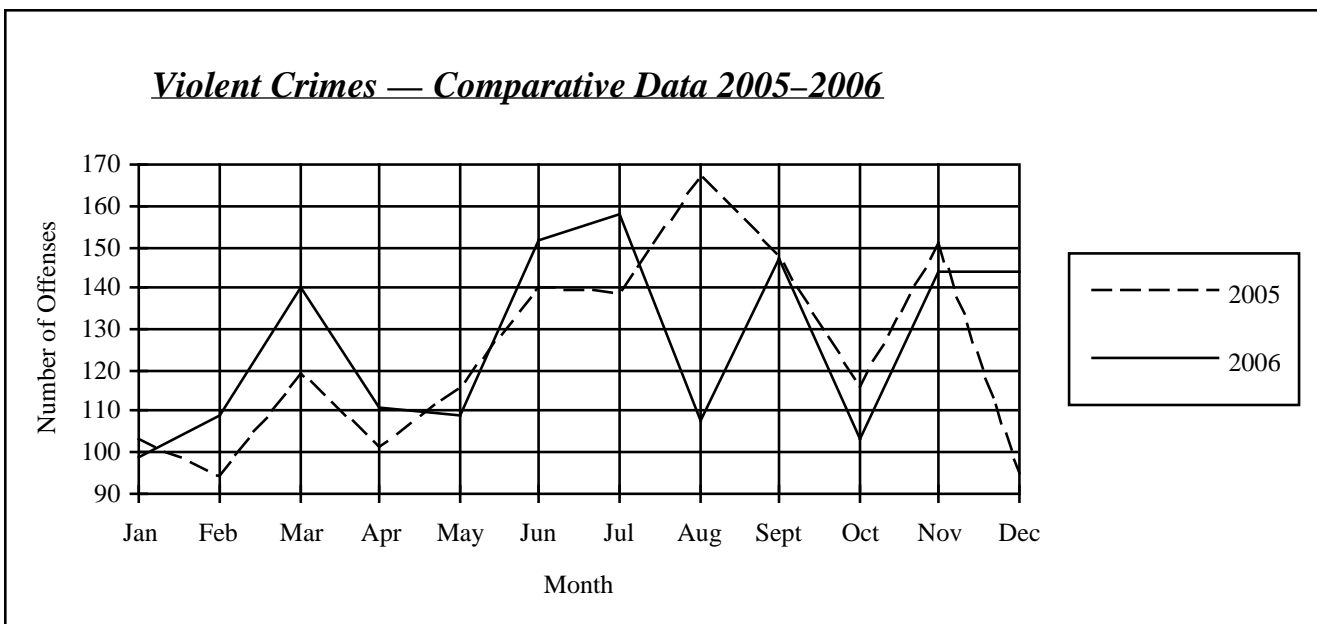
The 2006 crime rate for violent crime is 1.15 offenses per 1,000 population. Violent crimes represent 4.4% of all reported index crimes. Police cleared 894 violent crimes for a 58.7 clearance rate.



*Number of Offenses — Comparative Data 2005–2006*

	Murder	Rape	Robbery	Aggravated Assault	Totals
<b>2005</b>	19	322	323	826	1,490
<b>2006</b>	21	340	383	780	1,524
<b>Number Change</b>	2	18	60	-46	34
<b>Percent Change</b>	10.5%	5.6%	18.6%	-5.6%	2.3%

*Violent Crimes — Comparative Data 2005–2006*



### Violent Crime by County

(State Violent Crime Rate: 1.15)

