



## MURDER AND NON-NEGLIGENT MANSLAUGHTER

Murder and non-negligent manslaughter are described by UCR as the willful (non-negligent) killing of one human being by another — or a death that results from the commission of another criminal act.

*Murder — “1. A person is guilty of murder if: A. He intentionally or knowingly causes the death of another human being; B. He engages in conduct which manifests a depraved indifference to the value of human life ...; or C. ... causes another human being to commit suicide by the use of force, duress or deception.” M.R.S.A. Title 17-A, § 201*

*Felony Murder — “1. A person is guilty of felony murder if acting alone or with one or more other persons in the commission or attempt to commit immediate flight after committing or attempting to commit ... [another felony offense], he or another participant in fact causes the death of another human being ...” M.R.S.A. Title 17-A, § 202*

*Manslaughter — “1. A person is guilty of manslaughter if he: B. ... causes the death of another human being ... while under the influence of extreme anger or extreme fear ...” M.R.S.A. Title 17-A, § 203*

Not included in the count for this offense classification are deaths caused by negligence, suicide, or accident. Although manslaughter by negligence is recorded on the “offenses known to police” form along with murder, it is not considered an index offense and is not discussed in this report. Attempts to murder or assaults to murder are scored as aggravated assaults and not murder.

### Crime Clock

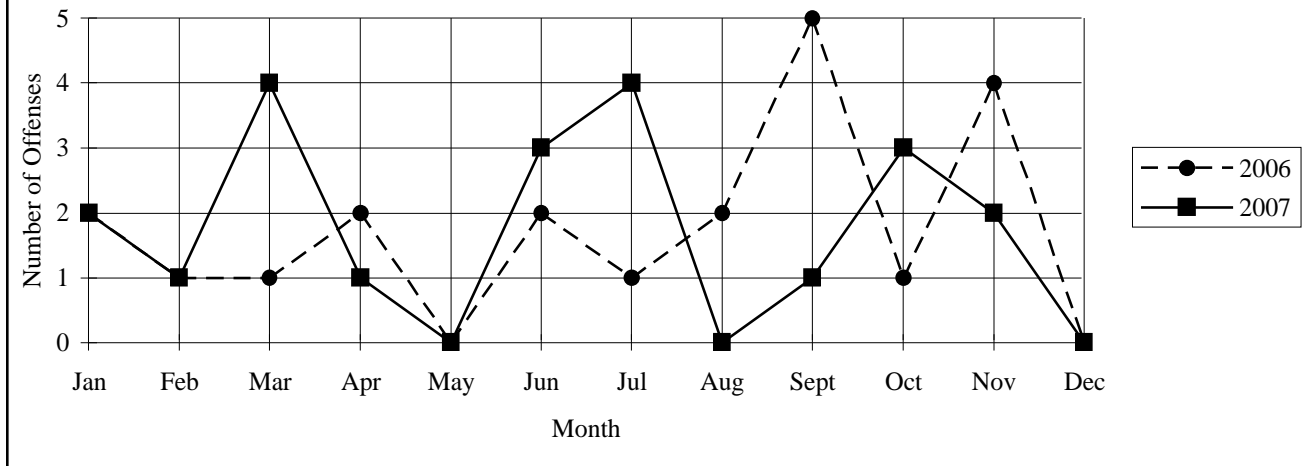


Year	Trend					2003–2007
	2003	2004	2005	2006	2007	
Number reported	17	19	19	21	21	
% change from previous year	21.4%	11.8%	—	10.5%	—	% change 23.5%
Rate per 1,000	0.01	0.01	0.01	0.02	0.02	
% change from previous year	—	—	—	100.0%	—	% change 100.0%

### Characteristics — 2007

<b>Victim–Offender Relationship</b>		<b>Months of Highest Occurrence</b>	
Non-Stranger to Non-Stranger .....	90.5%	March, July .....	19.0%
Stranger to Stranger .....	0.0%	June, Oct. ....	14.3%
Unknown .....	9.5%	Jan., Nov. ....	9.5%
<b>Type of Weapon Used</b>		<b>Value of Property Stolen during Offense</b>	
Firearm .....	38.1%	Total .....	\$0.00
Knife/Cutting Instrument.....	28.6%	Per Incident Average.....	\$0.00
Other Dangerous Weapon.....	4.8%	<b>Clearance Rate</b>	
Hands, Fists, Feet .....	19.0%	20 Offenses Cleared.....	95.2%
Other/Undetermined .....	9.5%	Arrests/Crime Ratio.....	1.00

***Murder & Non-Negligent Manslaughter — Comparative Data  
2006–2007***

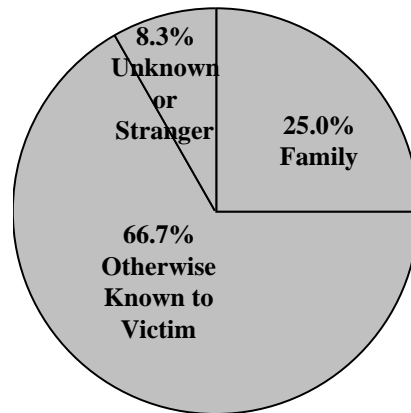


***Profile of Persons Arrested — 21 Arrests***

Age	Sex
17 and under.....0.0%	Male.....95.2%
18–24.....52.4%	Female.....4.8%
25–29.....4.8%	
30–34.....9.5%	
35–39.....4.8%	
40 and over.....28.6%	
1 offender committed suicide	

***Murder Distribution by Relationship (Victim to Offender)***

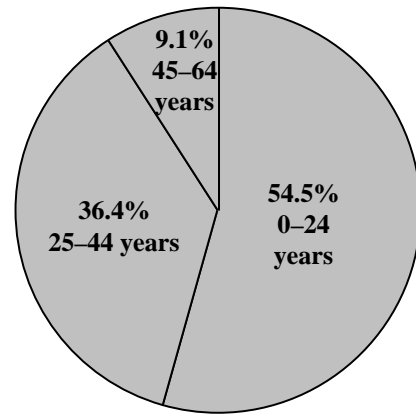
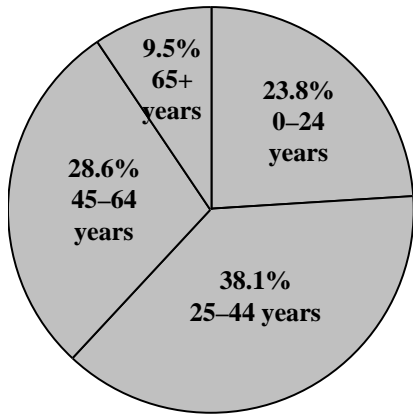
Relationship*	Number	% of Total
Wife	3	12.5%
Father	2	8.3%
Mother	1	4.2%
<b>Total Family</b>	<b>6</b>	<b>25.0%</b>
Girlfriend/Boyfriend	1	4.2%
Child in Care	2	8.3%
Friend	1	4.2%
Acquaintance	12	50.0%
Unknown	2	8.3%
<b>Total Other</b>	<b>18</b>	<b>75.0%</b>
<b>TOTAL</b>	<b>24</b>	<b>100.0%</b>



\*Number of relationships may not agree with number of victims due to instances of multiple offenders or multiple victims.

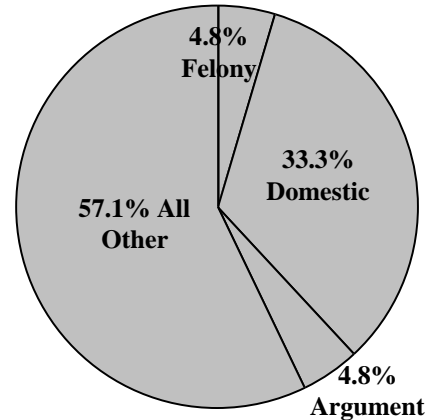
**Murder Distribution by Age and Sex**

Age of Victims	Male	Female	Total	Age of Offenders	Male	Female	Total
0–14 years	—	2	2	0–14 years	—	—	—
15–24 years	1	2	3	15–24 years	11	1	12
25–34 years	3	2	5	25–34 years	5	—	5
35–44 years	—	3	3	35–44 years	3	—	3
45–54 years	1	1	2	45–54 years	1	—	1
55–64 years	4	—	4	55–64 years	1	—	1
65+ years	1	1	2	65+ years	—	—	—
<b>Total</b>	<b>10</b>	<b>11</b>	<b>21</b>	<b>Total</b>	<b>21</b>	<b>1</b>	<b>22</b>



**Murder Distribution by Circumstances**

Circumstance**	Number	% of Total
Robbery	1	4.8%
<b>Felony Total*</b>	<b>1</b>	<b>4.8%</b>
Domestic Conflict	7	33.3%
Argument	1	4.8%
Child Abuse/Neglect	2	9.5%
Other	8	38.1%
Unknown	2	9.5%
<b>Other than Felony Total</b>	<b>20</b>	<b>95.2%</b>
<b>TOTAL</b>	<b>21</b>	<b>100.0%</b>

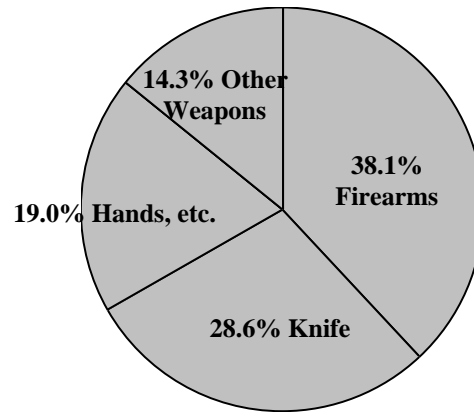


\*Felony murder is defined as a killing which occurs in conjunction with the commission of another crime such as a robbery, arson, sexual assault or other felonious activities.

\*\*Due to the unlimited set of possible circumstances surrounding homicides, it is difficult to provide a clear-cut or precise statistical category. In the intent of uniformity, the number of circumstance categories has been kept to a minimum. Caution is suggested in drawing generalizations from the data without more deliberate analysis. This table makes no attempt to analyze the motives of offenders, but rather to display general circumstances surrounding the events.

***Murder Distribution by Weapon***

Weapon	Number	% of Total
Firearm	8	38.1%
Knife, Cutting Instrument	6	28.6%
Hands, Fists, Feet	4	19.0%
Other/Unknown	3	14.3%
<b>Total</b>	<b>21</b>	<b>100.0%</b>



***FORCIBLE RAPE***



Forcible rape is the carnal knowledge of a female forcibly and against her will.

*“A person is guilty of gross sexual assault if that person engages in a sexual act (direct genital contact) with another person and the person submits as a result of compulsion.” M.R.S.A. Title 17-A, § 253*

This category is broken down into two categories: Rape by Force, and Attempted Forcible Rape. Carnal abuse without force (statutory rape) and other sex offenses are not included.

Forcible rape differs from other violent crimes in that the victim, in many cases, is reluctant to report the offense to police. The investigation by police, medical examination, court procedure, embarrassment and fear of any accompanying stigma have a deterrent effect on the victim’s willingness to make the offense known to police.

**Crime Clock**



Maine has experienced increased availability in services such as rape crisis centers providing 24-hour hot lines and counselors, witness/victim assistants in district attorneys’ offices, improved medical practices and increased sensitivity by law enforcement personnel. The increased number of offenses identified in this report may be, in part, influenced by the increasing confidence of victims in the criminal justice system.

***Trend***

Year	2003	2004	2005	2006	2007	2003–2007
Number reported	351	313	322	340	393	
% change from previous year	-10.2%	-10.8%	2.9%	5.6%	15.6%	% change 12.0%
Rate per 1,000	0.27	0.24	0.24	0.26	0.30	
% change from previous year	-10.0%	-11.1%	—	8.3%	15.4%	% change 11.1%

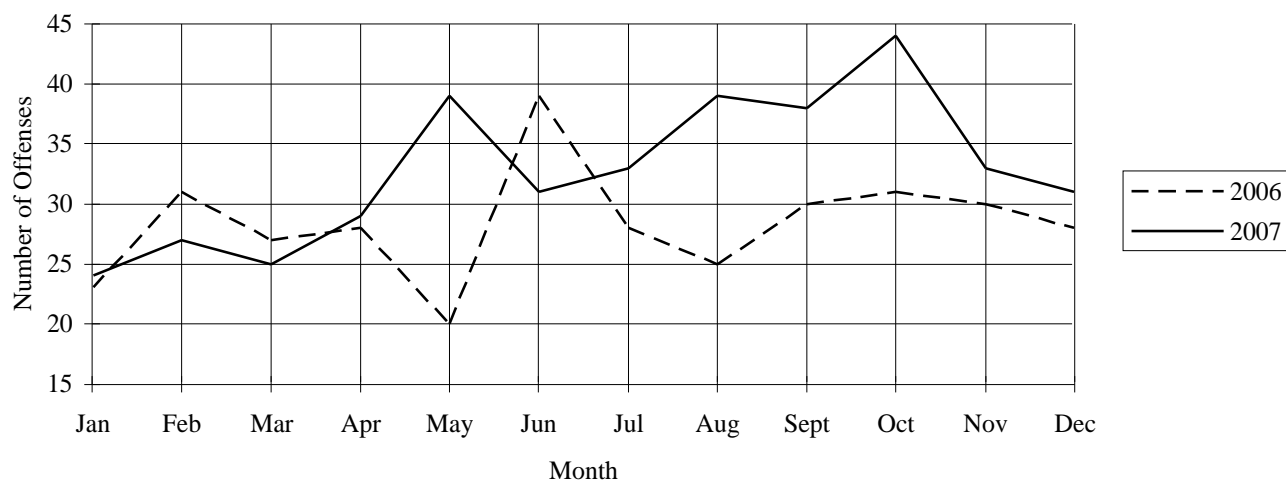
**Characteristics — 2007**

<b>Type of Offense</b>	
Rape by Force .....	97.2%
Attempts to Rape.....	2.8%
<b>Months of Highest Occurrence</b>	
October .....	11.2%
May, August .....	9.9%
September .....	9.7%
<b>Value of Property Stolen during Offense</b>	
Total.....	\$10.00
Per Incident Average .....	\$0.03
<b>Clearance Rate</b>	
171 Offenses Cleared.....	43.5%
Arrests/Crime Ratio.....	0.18

**Profile of Persons Arrested  
71 Arrests**

<b>Age</b>	
17 and under.....	11.3%
18–24.....	32.4%
25–29.....	8.5%
30–34.....	9.9%
35–39.....	14.1%
40 and over.....	23.9%
<b>Sex</b>	
Male.....	98.6%
Female.....	1.4%

**Rapes — Comparative Data 2006–2007**



**Rape by Type of Offense, 2006–2007**

	2006	2007	% change
Forcible Rape	326	382	17.2%
Attempted Rape	14	11	-21.4%
<b>Totals</b>	<b>340</b>	<b>393</b>	<b>15.6%</b>



## ROBBERY

Robbery is defined by UCR as “the felonious and forcible taking of the property of another against his will by violence or by putting him in fear.” All attempts to rob are included in the UCR report.

“1. A person is guilty of robbery if he commits or attempts to commit theft and at the time of his actions: A. He recklessly inflicts bodily injury on another; B. He threatens to use force against any person present with the intent (1) to prevent or overcome resistance to the taking of the property, ...; or (2) to compel the person in control of the property to give it up ...; C. He uses physical force on another with the intent enumerated in paragraph B, subparagraphs (1) and (2); D. He intentional-

ly inflicts or attempts to inflict bodily injury on another; or E. He or an accomplice to his knowledge is armed with a dangerous weapon ... ” M.R.S.A. Title 17-A, § 65, 1

### Crime Clock



<i>Trend</i>						
Year	2003	2004	2005	2006	2007	2003–2007
Number reported	289	288	323	383	349	
% change from previous year	7.4%	-0.3%	12.2%	18.6%	-8.9%	
						% change 20.8%
Rate per 1,000	0.22	0.22	0.24	0.29	0.26	
% change from previous year	4.8%	—	9.1%	20.8%	-10.3%	
						% change 18.2%

<i>Characteristics — 2007</i>	
<p><b>Type of Weapon Used</b></p> <p>Hands, Fists, Feet.....59.3%</p> <p>Firearm.....20.9%</p> <p>Knife/Cutting Instrument.....10.3%</p> <p>Other Dangerous Weapon.....9.5%</p>	<p><b>Months of Highest Occurrence</b></p> <p>December .....11.7%</p> <p>July, Sept. ....10.9%</p> <p>June .....10.0%</p>
<p><b>Place of Occurrence</b></p> <p>Street, Alley.....30.9%</p> <p>Business Establishment.....30.1%</p> <p>Residence.....19.5%</p> <p>Miscellaneous.....16.0%</p> <p>Banks.....3.4%</p>	<p><b>Value of Property Stolen during Offense</b></p> <p>Total.....\$936,152.00</p> <p>Per Incident Average.....\$2,682.38</p>
	<p><b>Clearance Rate</b></p> <p>143 Offenses Cleared.....41.0%</p> <p>Arrests/Crime Ratio.....0.49</p>

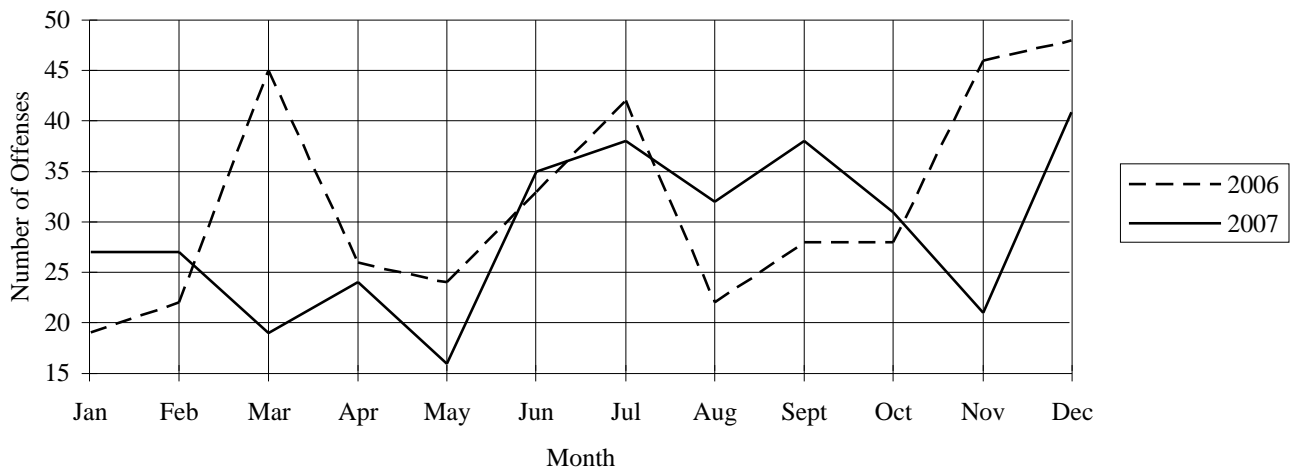
**Profile of Persons Arrested  
172 Arrests**

Age	
17 and under.....	12.2%
18–24.....	36.6%
25–29.....	20.3%
30–34.....	8.1%
35–39.....	9.3%
40 and over.....	13.4%
Sex	
Male.....	87.2%
Female.....	12.8%

**Robbery by Weapon Type, 2006–2007**

	2006	2007	% change
Firearm	78	73	-6.4%
Knife	80	36	-55.0%
Other Weapon	42	33	-21.4%
Strong Arm	183	207	13.1%
<b>Totals</b>	<b>383</b>	<b>349</b>	<b>-8.9%</b>

**Robberies — Comparative Data 2006–2007**



**Robbery by Classification, 2006–2007**

Classification	Number of Offenses			2006	Value Stolen 2007	% change
	2006	2007	% change			
Highway	114	108	-5.3%	\$19,325.00	\$17,909.00	-7.3%
Commercial House	59	54	-8.5%	\$29,893.00	\$148,443.00	396.6%
Gas/Service Station	12	13	8.3%	\$2,989.00	\$6,976.00	133.4%
Convenience Store	52	38	-26.9%	\$14,026.00	\$12,777.00	-8.9%
Residence	66	68	3.0%	\$14,310.00	\$116,416.00	713.5%
Bank/Lending Inst.	27	12	-55.6%	\$159,307.00	\$21,840.00	-86.3%
Miscellaneous	53	56	5.7%	\$25,370.00	\$611,791.00	2,311.5%
<b>Totals</b>	<b>383</b>	<b>349</b>	<b>-8.9%</b>	<b>\$265,220.00</b>	<b>\$936,152.00</b>	<b>253.0%</b>

<i>Robbery Type by County</i>									
County		Highway	Commercial House	Gas Station	Convenience Store	Residence	Bank	Misc.	Total
<b>Androscoggin</b>									
	2007	12	11	2	5	8	1	7	46
	2006	20	1	1	4	11	5	12	54
<b>Aroostook</b>									
	2007	2	—	—	1	10	—	4	17
	2006	—	—	—	—	5	—	—	5
<b>Cumberland</b>									
	2007	55	30	3	19	15	4	20	146
	2006	66	50	8	25	27	11	20	207
<b>Franklin</b>									
	2007	1	1	—	—	1	1	1	5
	2006	1	1	—	2	—	—	2	6
<b>Hancock</b>									
	2007	—	—	—	—	—	—	2	2
	2006	—	—	—	—	—	—	—	—
<b>Kennebec</b>									
	2007	7	2	2	1	9	1	4	26
	2006	5	1	2	5	3	3	4	23
<b>Knox</b>									
	2007	2	—	—	—	—	—	1	3
	2006	—	1	—	—	—	—	1	2
<b>Lincoln</b>									
	2007	—	1	—	—	2	—	1	4
	2006	—	—	—	1	—	2	—	3
<b>Oxford</b>									
	2007	—	—	1	—	1	—	1	3
	2006	—	—	—	1	1	—	1	3
<b>Penobscot</b>									
	2007	14	7	1	4	6	—	2	34
	2006	11	3	—	5	10	1	3	33
<b>Piscataquis</b>									
	2007	—	—	—	—	—	—	—	—
	2006	—	—	—	—	—	—	—	—
<b>Sagadahoc</b>									
	2007	—	—	1	—	—	—	—	1
	2006	2	1	—	—	2	1	—	6
<b>Somerset</b>									
	2007	2	—	—	3	1	—	1	7
	2006	—	—	—	6	—	—	2	8
<b>Waldo</b>									
	2007	—	—	—	1	—	—	—	1
	2006	—	1	—	—	—	—	—	1
<b>Washington</b>									
	2007	—	—	—	—	1	—	—	1
	2006	1	—	—	—	—	—	—	1
<b>York</b>									
	2007	13	2	3	4	14	5	12	53
	2006	8	—	1	3	7	4	8	31





## AGGRAVATED ASSAULT

An aggravated assault is an attempt or offer, with unlawful force or violence, to do physical injury to another. This type of assault is usually accompanied by the use of a weapon or other means likely to produce death or serious bodily injury. Attempts are included since it is not necessary that an injury result when a gun, knife, or other weapon is used which could and probably would result in serious personal injury if the crime is successfully completed. Assaults with personal weapons (hands, fists, feet) are scored as aggravated if there is personal injury requiring more than simple first aid to treat.

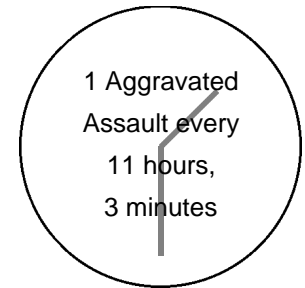
*Aggravated Assault: "1. A person is guilty of aggravated assault if he ... causes: A. Serious bodily injury to another; or, B. Bodily injury to another with use of a dangerous weapon; or, C. Bodily injury to another under circumstances manifesting extreme indifference to the value of human life." M.R.S.A. Title 17-A, § 208*

*Assault while Hunting: "1. A person is guilty of assault while hunting if ... he, with criminal negligence, causes bodily injury to another with the use of a dangerous weapon." M.R.S.A. Title 17-A, § 208-A*

*Assault on an Officer: "1. A person is guilty of assault on an officer if: A. ... causes bodily injury to a law enforcement officer while the officer is in the performance of his official duties; or, B. While in custody in a penal institution or other facility pursuant to an arrest or ... court order, he commits an assault on a member of the staff of the institution ..." M.R.S.A. Title 17-A, § 752-A*

Not included in this class are simple (non-aggravated) assaults. Simple assaults are non-index offenses, although a record is kept of these assaults on an "offenses known to police" form. During 2007 there were 11,264 simple assaults reported (+3.3% from 2006), with a clearance rate of 74.9%. These simple assaults are included in the report of domestic assaults, and assaults on law enforcement officers.

### Crime Clock



### Trend

Year	2003	2004	2005	2006	2007	2003-2007
Number reported	755	728	826	780	793	
% change from previous year	3.7%	-3.6%	13.5%	-5.6%	1.7%	
						% change 5.0%
Rate per 1,000	0.58	0.55	0.63	0.59	0.60	
% change from previous year	3.6%	-5.2%	14.5%	-6.3%	1.7%	
						% change 3.4%

### Characteristics — 2007

#### Type of Weapon Used

Hands, Fists, Feet.....	43.9%
Other Dangerous Weapons .....	31.5%
Knife/Cutting Instrument.....	19.0%
Firearms.....	5.5%

#### Months of Highest Occurrence

July .....	10.7%
May .....	9.7%
September .....	9.1%

#### Clearance Rate

574 Offenses Cleared.....	72.4%
Arrests/Crime Ratio.....	0.82

### Profile of Persons Arrested 648 Arrests

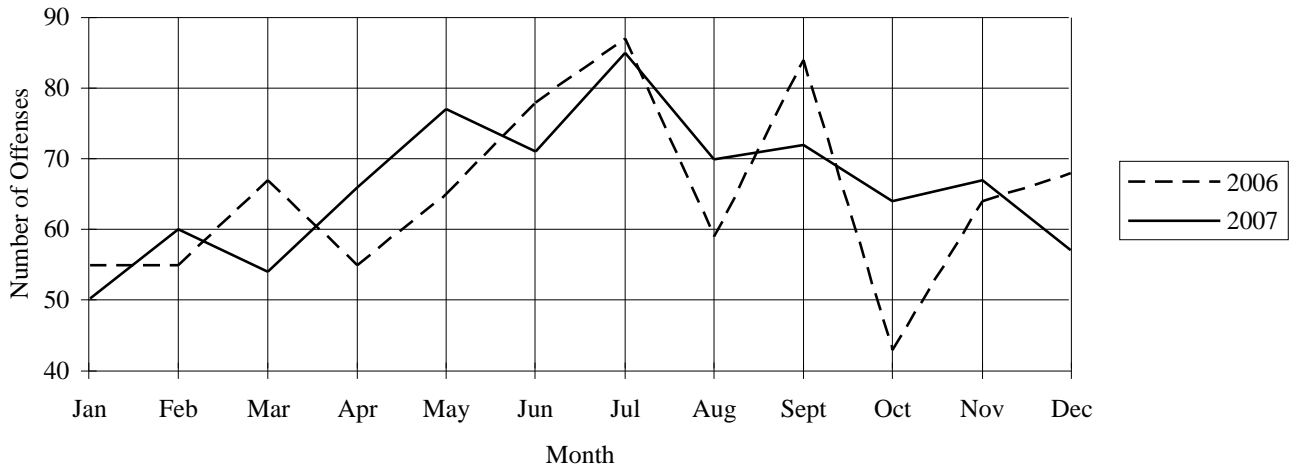
#### Age

17 and under.....	12.5%
18-24.....	26.9%
25-29.....	14.5%
30-34.....	10.6%
35-39.....	10.3%
40 and over.....	25.2%

#### Sex

Male.....	81.2%
Female.....	18.8%

***Aggravated Assaults — Comparative Data 2006–2007***



***Aggravated Assault by Weapon Type, 2006–2007***

	Firearm	Knife	Other Weapon	Strong Arm	Totals
<b>2006</b>	45	160	216	359	<b>780</b>
<b>2007</b>	44	151	250	348	<b>793</b>
<b>% change</b>	-2.2%	-5.6%	15.7%	-3.1%	<b>1.7%</b>

***DOMESTIC VIOLENCE***

Due to problems of abuse and domestic violence between family or household members, the 109th Maine Legislature enacted a law entitled “An Act Concerning Abuse between Household and Family Members.” The law, Chapter 578 of the Public Laws of 1979, mandates the reporting of domestic violence data by law enforcement agencies and the collection of such data (Title 19, § 770 [1]) by the Uniform Crime Reporting Unit, State Bureau of Identification, Department of Public Safety.

During 2007:

- Of a grand total of 12,057 reported assaults, 5,771 or 47.9% were identified as occurring between household

or family members.

- Domestic assaults increased 3.9% (217 offenses) from the 2006 figure of 5,554.
- Law enforcement agencies cleared 4,832 domestic assaults for a clearance rate of 83.7%.
- Of the 5,771 domestic assaults, 97.5% involved personal weapons (hands, fists, feet).



<i>Domestic Violence Assaults Comparison Data 2006–2007</i>				
<b>Situations/Relationships</b>	<b>2006 Number of Offenses</b>	<b>2006 % of Total</b>	<b>2007 Number of Offenses</b>	<b>2007 % of Total</b>
<b>Male Assault on Female</b>				
Firearm	10	.2	13	.2
Knife, Cutting Instrument	9	.2	15	.3
Other Dangerous Weapon	43	.8	35	.6
Hands, Aggravated Injury	47	.8	81	1.4
Hands, Not Aggravated	3,121	56.2	3,215	55.7
<b>Total Male Assault on Female</b>	<b>3,230</b>	<b>58.2</b>	<b>3,359</b>	<b>58.2</b>
<b>Female Assault on Male</b>				
Firearm	5	<.1	2	<.1
Knife, Cutting Instrument	14	.3	20	.3
Other Dangerous Weapon	17	.3	18	.3
Hands, Aggravated Injury	3	<.1	16	.3
Hands, Not Aggravated	833	15.0	1,040	18.0
<b>Total Female Assault on Male</b>	<b>872</b>	<b>15.7</b>	<b>1,096</b>	<b>19.0</b>
<b>Parent Assault on Child</b>				
Firearm	1	<.1	1	<.1
Knife, Cutting Instrument	1	<.1	1	<.1
Other Dangerous Weapon	6	.1	7	.1
Hands, Aggravated Injury	14	.3	11	.2
Hands, Not Aggravated	420	7.6	468	8.1
<b>Total Parent Assault on Child</b>	<b>442</b>	<b>8.0</b>	<b>488</b>	<b>8.5</b>
<b>Child Assault on Parent</b>				
Firearm	1	<.1	—	<.1
Knife, Cutting Instrument	3	<.1	7	.1
Other Dangerous Weapon	8	.1	6	.1
Hands, Aggravated Injury	3	<.1	3	<.1
Hands, Not Aggravated	390	7.0	200	3.5
<b>Total Child Assault on Parent</b>	<b>405</b>	<b>7.3</b>	<b>216</b>	<b>3.7</b>
<b>All Other Domestic Assaults</b>				
Firearm	1	<.1	2	<.1
Knife, Cutting Instrument	6	.1	5	<.1
Other Dangerous Weapon	11	.2	15	.3
Hands, Aggravated Injury	10	.2	7	.1
Hands, Not Aggravated	577	10.4	583	10.1
<b>Total All Other Domestic Assaults</b>	<b>605</b>	<b>10.9</b>	<b>612</b>	<b>10.6</b>
<b>Grand Total All Domestic Assaults</b>	<b>5,554</b>	<b>100.0</b>	<b>5,771</b>	<b>100.0</b>
<b>Domestic Assaults/Type of Weapon</b>				
Firearm	18	.3	18	.3
Knife, Cutting Instrument	33	.6	48	.8
Other Dangerous Weapon	85	1.5	81	1.4
Hands, Aggravated Injury	77	1.4	118	2.0
Hands, Not Aggravated	5,341	96.2	5,506	95.4
<b>Total Domestic Assaults</b>	<b>5,554</b>	<b>100.0</b>	<b>5,771</b>	<b>100.0</b>
<b>Total All Domestic Assaults</b>	<b>5,554</b>	<b>47.5</b>	<b>5,771</b>	<b>47.9</b>
<b>Total All Reported Assaults</b>	<b>11,681</b>	<b>100.0</b>	<b>12,057</b>	<b>100.0</b>

*Breakdown of Reported Domestic Assaults by County, 2006–2007*

<b>County</b>	<b>2006 Number of Offenses</b>	<b>2006 Percent of Total</b>	<b>2007 Number of Offenses</b>	<b>2007 Percent of Total</b>	<b>Percent Change Offenses</b>
Androscoggin	684	12.3%	768	13.3%	12.3%
Aroostook	260	4.7%	229	4.0%	-11.9%
Cumberland	1,106	19.9%	1,122	19.4%	1.4%
Franklin	139	2.5%	147	2.5%	5.8%
Hancock	85	1.5%	94	1.6%	10.6%
Kennebec	672	12.1%	710	12.3%	5.7%
Knox	85	1.5%	131	2.3%	54.1%
Lincoln	128	2.3%	116	2.0%	-9.4%
Oxford	249	4.5%	281	4.9%	12.9%
Penobscot	435	7.8%	473	8.2%	8.7%
Piscataquis	30	0.5%	49	0.8%	63.3%
Sagadahoc	90	1.6%	86	1.5%	-4.4%
Somerset	307	5.5%	340	5.9%	10.7%
Waldo	117	2.1%	114	2.0%	-2.6%
Washington	96	1.7%	88	1.5%	-8.3%
York	1,071	19.3%	1,023	17.7%	-4.5%
<b>Totals</b>	<b>5,554</b>	<b>100.0%</b>	<b>5,771</b>	<b>100.0%</b>	<b>3.9%</b>