



## BURGLARY

Burglary, also known as breaking and entering, is “the unlawful entry or attempted forcible entry of any structure to commit a felony or larceny.”

“A person is guilty of burglary if he enters or surreptitiously remains in a structure, knowing that he is not licensed or privileged to do so, with the intent to commit a crime therein.” M.R.S.A. Title 17-A, § 401

### Crime Clock

1 Burglary  
every  
78 minutes,  
43 seconds

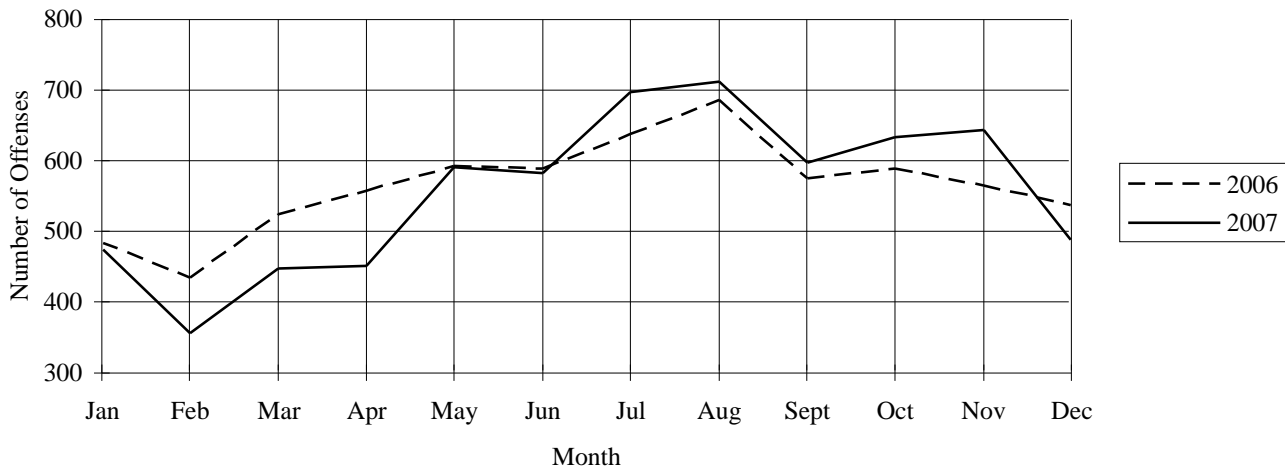
Year	Trend					2003–2007
	2003	2004	2005	2006	2007	
Number reported	6,571	6,344	6,277	6,776	6,677	
% change from previous year	-5.4%	-3.5%	-1.1%	7.9%	-1.5%	% change 1.6%
Rate per 1,000	5.03	4.82	4.76	5.13	5.07	
% change from previous year	-6.2%	-4.2%	-1.2%	7.8%	-1.2%	% change 0.8%

Characteristics — 2007	
<b>Place of Occurrence</b>	
Residence.....	69.1%
Non-Residence.....	30.9%
<b>Type of Entry</b>	
Forcible Entry.....	50.1%
Unlawful Entry — No Force.....	44.6%
Attempted Forcible Entry.....	5.3%
<b>Time of Day</b>	
Day — 6 a.m.–6 p.m.....	45.4%
Night — 6 p.m.–6 a.m.....	27.8%
Unknown.....	26.8%
<b>Months of Highest Occurrence</b>	
August .....	10.7%
July .....	10.4%
November .....	9.6%
<b>Value of Property Stolen during Offense</b>	
Total.....	\$6,746,386.00
Per Incident Average.....	\$1,010.39
<b>Clearance Rate</b>	
1,383 Offenses Cleared.....	20.7%
Arrests/Crime Ratio.....	0.20

Profile of Persons Arrested 1,306 Arrests	
<b>Age</b>	
17 and under.....	29.9%
18–24.....	35.1%
25–29.....	10.9%
30–34.....	8.4%
35–39.....	5.4%
40 and over.....	10.3%
<b>Sex</b>	
Male.....	87.3%
Female.....	12.7%

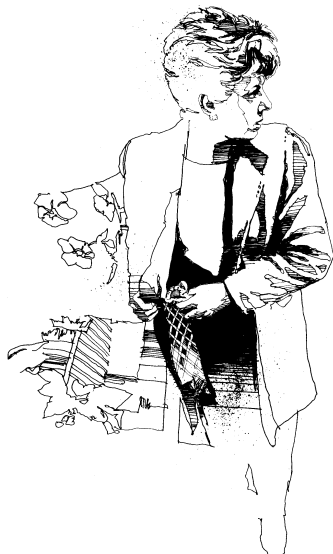
Type of Entry, 2006–2007			
	2006	2007	% change
Forcible Entry	3,531	3,347	-5.2%
Unlawful Entry, no force	2,933	2,979	1.6%
Attempted Forcible Entry	312	351	12.5%
<b>Totals</b>	<b>6,776</b>	<b>6,677</b>	<b>-1.5%</b>

***Burglaries — Comparative Data 2006–2007***



***Burglary by Time of Day, 2006–2007***

	Number of Offenses			Estimated Value of Property Loss		
	2006	2007	% change	2006	2007	% change
<b>Residence</b>						
6 p.m.–6 a.m.	1,133	1,185	4.6%	\$1,198,066	\$1,029,172	-14.1%
6 a.m.–6 p.m.	2,091	2,217	6.0%	\$2,226,863	\$2,141,668	-3.8%
Unknown	1,417	1,209	-14.7%	\$1,384,182	\$1,386,213	0.1%
<b>Subtotals</b>	<b>4,641</b>	<b>4,611</b>	<b>-0.6%</b>	<b>\$4,809,111</b>	<b>\$4,557,053</b>	<b>-5.2%</b>
<b>Non-Residence</b>						
6 p.m.–6 a.m.	891	668	-25.0%	\$872,060	\$492,645	-43.5%
6 a.m.–6 p.m.	587	815	38.8%	\$585,528	\$799,834	36.6%
Unknown	657	583	-11.3%	\$798,552	\$896,854	12.3%
<b>Subtotal</b>	<b>2,135</b>	<b>2,066</b>	<b>-3.2%</b>	<b>\$2,256,140</b>	<b>\$2,189,333</b>	<b>-3.0%</b>
<b>Grand Totals</b>	<b>6,776</b>	<b>6,677</b>	<b>-1.5%</b>	<b>\$7,065,251</b>	<b>\$6,746,386</b>	<b>-4.5%</b>



***LARCENY-THEFT***

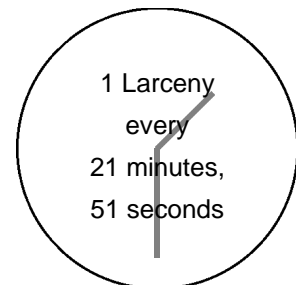
Larceny is the unlawful taking of the property of another with the intent to deprive him of ownership.

Maine has consolidated conduct denoted as Theft under Title 17-A, Chapter 15, § 351, Consolidation, embracing numerous separate crimes previously known as larceny, embezzlement, false pretenses, extortion, blackmail, shoplifting, and receiving stolen property. In properly classifying/scoring these offenses under UCR guidelines, certain offenses fall under Larceny-Theft, while others more appropriately fit under Part II offense definitions such as Fraud, Embezzlement, Stolen Property or All Other Offenses.

*Theft by unauthorized taking or transfer* — “1. A person is guilty of theft if he obtains or exercises unauthorized control over the property of another with intent to deprive him thereof.” M.R.S.A. Title 17-A, § 353

*Burglary of a motor vehicle* — “A person is guilty of theft if the actor enters a motor vehicle knowing the actor is not licensed or privileged to do so, with the intent to commit a crime therein (and that crime is theft).” M.R.S.A. Title 17-A, § 405

**Crime Clock**



<i>Trend</i>						
Year	2003	2004	2005	2006	2007	2003-2007
Number reported	24,064	24,087	24,153	25,161	24,060	
% change from previous year	-1.8%	0.1%	0.3%	4.2%	-4.4%	
						% change —
Rate per 1,000	18.43	18.29	18.31	19.04	18.27	
% change from previous year	-2.6%	-0.8%	0.1%	4.0%	-4.1%	
						% change -0.9%

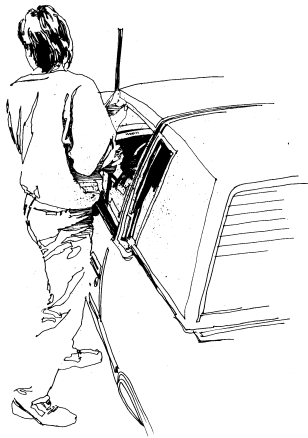
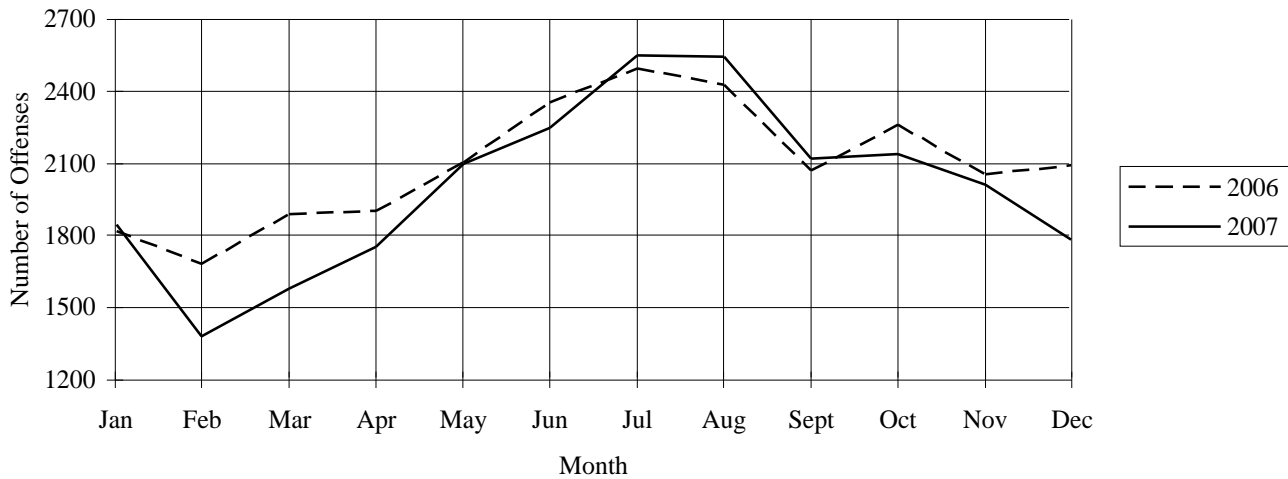
<i>Characteristics — 2007</i>	
<b>Type of Criminal Activity</b>	
All Other .....	48.1%
From Motor Vehicles .....	17.4%
Shoplifting .....	12.7%
From Buildings .....	12.6%
Motor Vehicle Parts & Accessories .....	4.3%
Bicycles .....	4.1%
From Coin-Op Machines .....	0.3%
Purse-Snatching .....	0.2%
Pocket-Picking .....	0.2%
<b>Value per Incident</b>	
Under \$50 .....	42.6%
Over \$200 .....	33.5%
\$50 to \$200 .....	23.9%
<b>Months of Highest Occurrence</b>	
July .....	10.6%
August .....	10.6%
June .....	9.3%
<b>Value of Property Stolen during Offense</b>	
Total.....	\$12,202,173.00
Per Incident Average.....	\$507.16
<b>Clearance Rate</b>	
7,176 Offenses Cleared.....	29.8%
Arrests/Crime Ratio.....	0.25

***Profile of Persons Arrested  
6,018 Arrests***

<b>Age</b>	
17 and under.....	24.7%
18-24.....	32.6%
25-29.....	13.4%
30-34.....	8.0%
35-39.....	7.1%
40 and over.....	14.3%
<b>Sex</b>	
Male.....	59.3%
Female.....	40.7%

<i>Larceny by Classification, 2006-2007</i>						
	Number of Offenses			Value Stolen		
	2006	2007	% change	2006	2007	% change
Pocket-Picking	50	51	2.0%	\$19,303	\$60,063	211.2%
Purse-Snatching	112	57	-49.1%	\$19,549	\$14,377	-26.5%
Shoplifting	2,817	3,046	8.1%	\$430,207	\$355,588	-17.3%
From Motor Vehicles	5,271	4,175	-20.8%	\$1,731,504	\$1,225,178	-29.2%
M/V Parts & Accessories	941	1,041	10.6%	\$421,090	\$741,804	76.2%
Bicycles	1,109	991	-10.6%	\$240,374	\$242,622	0.9%
From Buildings	3,399	3,042	-10.5%	\$2,586,182	\$2,939,870	13.7%
From Coin-Op Machines	63	84	33.3%	\$33,501	\$11,962	-64.3%
All Other	11,399	11,573	1.5%	\$6,329,237	\$6,610,709	4.4%
<b>Totals</b>	<b>25,161</b>	<b>24,060</b>	<b>-4.4%</b>	<b>\$11,810,947</b>	<b>\$12,202,173</b>	<b>3.3%</b>

***Larceny-Theft — Comparative Data 2006–2007***



***MOTOR VEHICLE THEFT***

Uniform Crime Reporting defines Motor Vehicle Theft as the larceny or attempted larceny of a motor vehicle, including “joy riding.” Excluded from this class is a reported offense where there is lawful access to the vehicle, such as a family situation, or unauthorized use by others with lawful access, such as with employees.

Motor vehicles are defined by UCR as self-propelled vehicles that run on the surface of the land and not on rails, such as automobiles, trucks, buses, motorcycles, motor scooters, snowmobiles, ATVs, etc. Not included are farm equipment, construction equipment, airplanes, motorboats.

*Unauthorized use of property — “1. A person is guilty of theft if: A. Knowing that he does not have the consent of the owner, he takes, operates or exercises control over a vehicle, or knowing that the vehicle has been wrongfully obtained, he rides in such vehicle.” M.R.S.A. Title 17-A § 360*



<b><i>Trend</i></b>						
<b>Year</b>	<b>2003</b>	<b>2004</b>	<b>2005</b>	<b>2006</b>	<b>2007</b>	<b>2003–2007</b>
Number reported	1,450	1,305	1,344	1,340	1,260	
% change from previous year	2.3%	-10.0%	3.0%	-0.3%	-6.0%	
						% change -13.1%
Rate per 1,000	1.11	0.99	1.02	1.01	0.96	
% change from previous year	0.9%	-10.8%	3.0%	-0.6%	-5.3%	
						% change -13.8%

**Type of Vehicle 2006–2007**

	Auto- mobiles	Trucks/ Buses	Other Vehicles	Totals
2006	912	194	234	<b>1,340</b>
2007	887	154	219	<b>1,260</b>
% change	-2.7%	-20.6%	-6.4%	<b>-6.0%</b>

**Locally Stolen M/Vs Recovered 2007**

	No. Recovered	% Recovered
Recovered Locally	433	34.4%
Recovered — Other Jurisdictions	160	12.7%
<b>Total Recovered</b>	<b>593</b>	<b>47.1%</b>
Not Recovered	667	52.9%

**Characteristics — 2007**

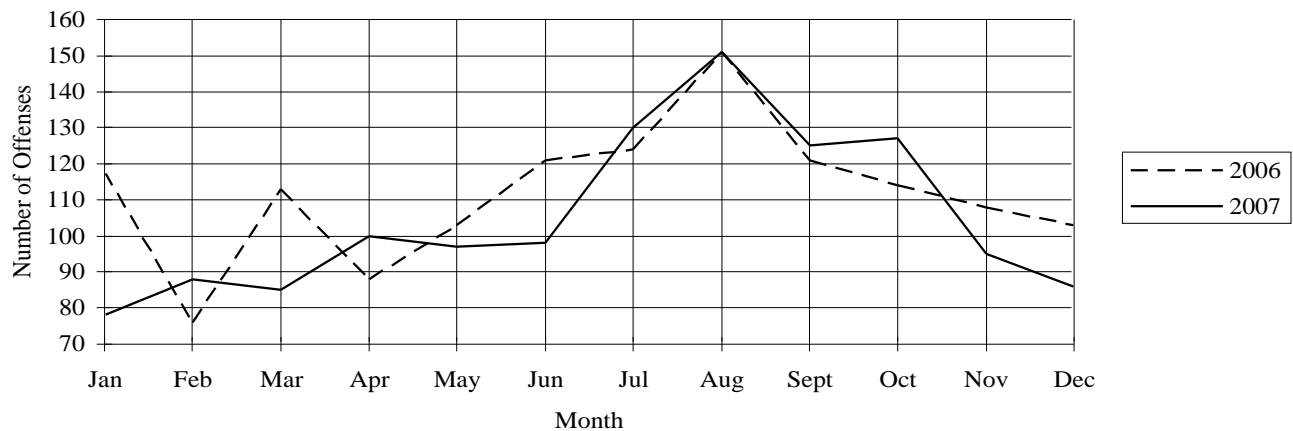
Type of Vehicle	
Automobiles.....	70.4%
Other Vehicles .....	17.4%
Trucks/Buses .....	12.2%
Months of Highest Occurrence	
August .....	12.0%
July .....	10.3%
October .....	10.1%

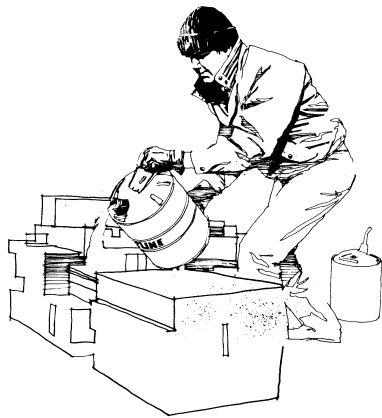
Value of Property Stolen during Offense	
Total.....	\$7,569,015.00
Per Incident Average.....	\$6,007.15
<b>Number of Locally Stolen M/Vs Recovered</b> .....	<b>593</b>
Value of Property Recovered	
Total .....	\$4,220,956.00
Clearance Rate	
415 Offenses Cleared.....	32.9%
Arrests/Crime Ratio.....	0.23

**Profile of Persons Arrested  
286 Arrests**

Age	
17 and under.....	30.1%
18–24.....	33.2%
25–29.....	13.6%
30–34.....	6.6%
35–39.....	5.9%
40 and over.....	10.5%
Sex	
Male.....	83.9%
Female.....	16.1%

**Stolen Vehicles — Comparative Data 2006–2007**



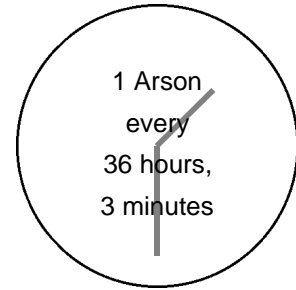


## ARSON

Arson is defined by the Uniform Crime Reporting program as any willful or malicious burning or attempt to burn, with or without intent to defraud, a dwelling house, public building, motor vehicle or aircraft, personal property of another, etc. Only fires determined through investigation to have been willfully or maliciously set are classified as arson. Fires of suspicious or unknown origins are excluded.

*"1. A person is guilty of arson if he starts, causes, or maintains a fire or explosion; A. On the property of another with the intent to damage or destroy property thereon; or B. On his own property or the property of another (1) with the intent to enable any person to collect insurance proceeds for the loss caused by the fire or explosion; or (2) which recklessly endangers any person or the property of another."* M.R.S.A. Title 17-A, § 802.

### Crime Clock



able any person to collect insurance proceeds for the loss caused by the fire or explosion; or (2) which recklessly endangers any person or the property of another." M.R.S.A. Title 17-A, § 802.

### Trend

Year	2003	2004	2005	2006	2007	2003-2007
Number reported	196	192	177	193	243	
% change from previous year	12.6%	-2.0%	-7.8%	9.0%	25.9%	% change 24.0%
Rate per 1,000 population	0.15	0.15	0.13	0.15	0.18	
% change from previous year	15.4%	—	-13.3%	15.4%	20.0%	% change 20.0%

### Characteristics — 2007

#### Type of Property

Structural.....	63.0%
Other.....	22.2%
Mobile.....	14.8%

#### Months of Highest Occurrence

August .....	11.9%
May .....	11.1%
July .....	10.7%

#### Value of Property Damaged

Total.....	\$3,825,380.00
Per Incident Average.....	\$15,742.30

#### Clearance Rate

68 Offenses Cleared.....	28.0%
Arrests/Crime Ratio.....	0.29

### Profile of Persons Arrested 70 Arrests

#### Age

17 and under.....	42.9%
18-24.....	15.7%
25-29.....	10.0%
30-34.....	7.1%
35-39.....	4.3%
40 and over.....	20.0%

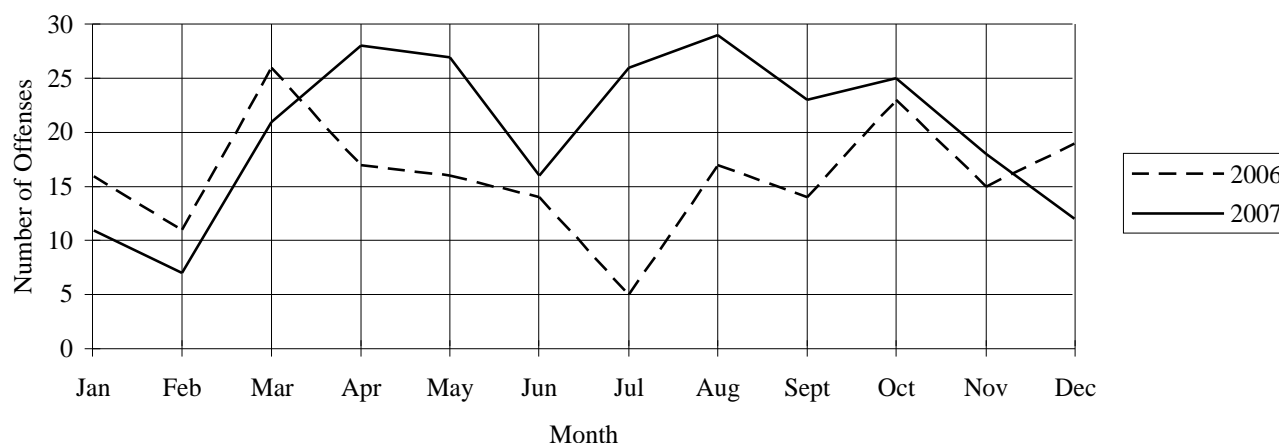
#### Sex

Male.....	77.1%
Female.....	22.9%

### Arson by Property Type, 2006-2007

Classification	Number of Offenses			Estimated Value of Property Loss		
	2006	2007	% change	2006	2007	% change
Structural — Residential	53	100	88.7%	\$2,276,530	\$2,897,620	27.3%
Structural — Non-residential	41	53	29.3%	\$1,701,750	\$782,316	-54.0%
Mobile (cars, trailers, boats, etc.)	42	36	-14.3%	\$386,970	\$132,976	-65.6%
All other (crops, fields, signs, etc.)	57	54	-5.3%	\$40,826	\$12,468	-69.5%
<b>Totals</b>	<b>193</b>	<b>243</b>	<b>25.9%</b>	<b>\$4,406,076</b>	<b>\$3,825,380</b>	<b>-13.2%</b>

### Arsons — Comparative Data 2006–2007



### Arson Breakdown by County

County	Number of Offenses			Estimated Value of Property Loss		
	2006	2007	% change	2006	2007	% change
Androscoggin	13	20	53.8%	\$507,410	\$294,724	-41.9%
Aroostook	6	4	-33.3%	\$20,493	\$7,600	-62.9%
Cumberland	59	47	-20.3%	\$434,451	\$499,462	15.0%
Franklin	2	8	300.0%	\$500,000	\$213,030	-57.4%
Hancock	4	4	—	\$62,100	\$12,500	-79.9%
Kennebec	26	22	-15.4%	\$147,896	\$262,100	77.2%
Knox	3	2	-33.3%	\$10,500	\$700	-93.3%
Lincoln	2	5	150.0%	\$60	\$89,000	148,233.3%
Oxford	6	7	16.7%	\$33,900	\$567,500	1,574.0%
Penobscot	26	40	53.8%	\$156,320	\$437,288	179.7%
Piscataquis	—	8	100.0%	—	\$2,150	100.0%
Sagadahoc	7	1	-85.7%	\$1,315,000	\$500	-100.0%
Somerset	6	13	116.7%	\$290,300	\$152,250	-47.6%
Waldo	5	8	60.0%	\$802,000	\$135,300	-83.1%
Washington	2	7	250.0%	\$200	\$210,275	105,037.5%
York	26	47	80.8%	\$125,446	\$941,001	650.1%
<b>Totals</b>	<b>193</b>	<b>243</b>	<b>25.9%</b>	<b>\$4,406,076</b>	<b>\$3,825,380</b>	<b>-13.2%</b>

*Note: Arson figures shown by UCR may not agree with figures shown by the Fire Marshal's office due to local departments handling cases informally.*