

CRIME RATES

The computation of crime rates as they appear in this report is based on 2008 population estimates received from the Uniform Crime Reporting division of the FBI, using provisional estimates of the Bureau of Census. Rural populations are arrived at by deleting the population figures for each direct reporting municipal department from their respective county totals.

Monthly and annual Uniform Crime Reports currently received from approximately 135 municipal, county and state law enforcement agencies in Maine represent 100 percent of the estimated Maine population.

The crime rate involves the number of Index Crimes

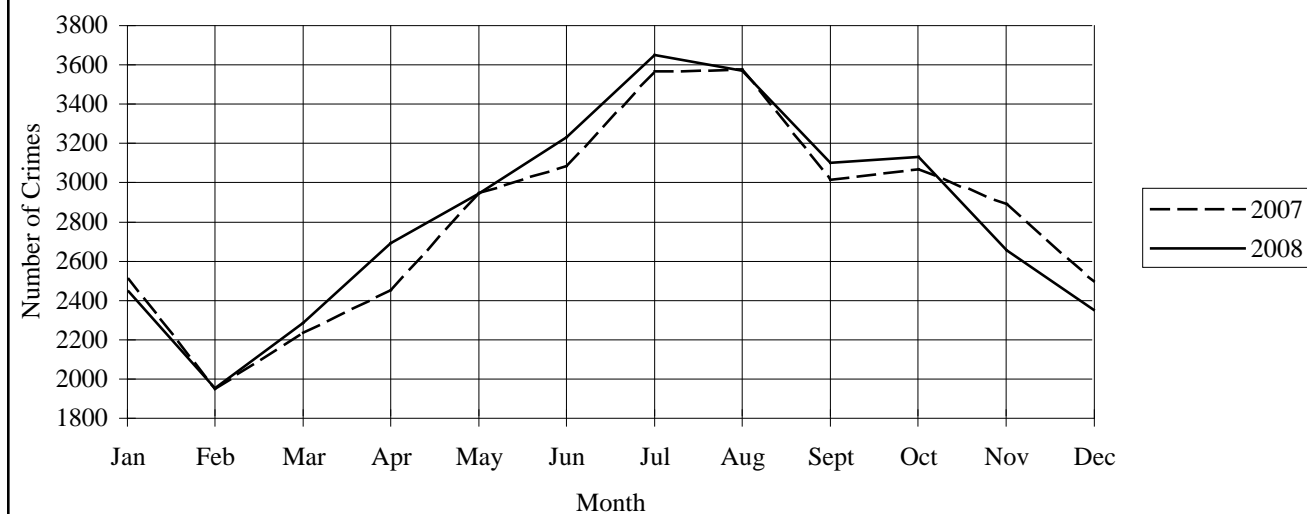
per unit of population, usually per 100,000 persons. Because Maine has such a low population total, a rate per 1,000 persons has been used to reflect a more realistic volume. No attempt has been made to incorporate either transient population or other factors which contribute to the ratio and type of crime in a given area. Any effort to make comparisons of crime rates between one area and another should recognize these population changes and varying environmental factors.

The crime index rate for Maine for the year 2008 was 25.83 offenses per 1,000 persons. Violent crimes occurred at a rate of 1.18 offenses per 1,000 persons, property crimes at a rate of 24.66.

2008 Crime Rates

Offense	Number of Offenses	Percent of Total	Rate/1,000 Population
Murder	31	.09%	.02
Rape	373	1.10%	.28
Robbery	332	.98%	.25
Aggravated Assault	813	2.39%	.62
Burglary	6,516	19.16%	4.95
Larceny-Theft	24,582	72.28%	18.67
M/V Theft	1,173	3.45%	.89
Arson	188	.55%	.14
Totals	34,008	100.00%	25.83
Total Violent Crime	1,549	4.55%	1.18
Total Property Crime	32,459	95.45%	24.66

Index Crimes



Crime by County

County		Annual Crime Rate per 1,000	Total Index Crimes	Murder	Rape	Robbery	Aggravated			Motor Vehicle Theft	Arson	Percent Clearance
							Assault	Burglary	Larceny			
Androscoggin	2007	26.14	2,801	4	39	46	66	607	1,909	110	20	34.6%
	2008	24.78	2,644	2	36	48	76	490	1,872	100	20	31.2%
Aroostook	2007	17.12	1,237	1	11	17	39	259	870	36	4	44.8%
	2008	18.39	1,315	1	7	7	26	283	940	48	3	40.6%
Cumberland	2007	28.96	7,925	3	74	146	225	1,521	5,548	361	47	26.0%
	2008	28.28	7,787	6	86	152	211	1,387	5,607	282	56	28.1%
Franklin	2007	28.10	838	—	13	5	32	167	594	19	8	29.2%
	2008	28.11	839	1	15	2	21	178	596	23	3	34.7%
Hancock	2007	17.99	965	1	10	2	19	157	734	38	4	40.6%
	2008	20.46	1,089	—	6	2	27	187	831	27	9	32.1%
Kennebec	2007	27.27	3,289	2	56	26	74	680	2,350	79	22	30.9%
	2008	29.41	3,551	3	46	17	71	629	2,663	105	17	31.3%
Knox	2007	21.65	887	—	6	3	21	126	706	23	2	33.5%
	2008	25.38	1,034	3	2	—	15	154	824	35	1	29.4%
Lincoln	2007	16.97	597	1	15	4	8	144	404	16	5	25.5%
	2008	15.29	532	—	9	—	13	133	357	16	4	28.4%
Oxford	2007	24.91	1,419	—	42	3	33	370	899	65	7	36.2%
	2008	24.64	1,398	2	36	6	37	382	884	46	5	38.4%
Penobscot	2007	33.57	4,909	3	14	34	39	775	3,869	135	40	26.0%
	2008	33.44	4,970	2	14	38	59	818	3,857	155	27	26.3%
Piscataquis	2007	32.19	563	—	5	—	55	132	348	15	8	37.5%
	2008	25.45	435	1	5	1	13	106	287	20	2	56.3%
Sagadahoc	2007	19.96	734	—	4	1	10	117	578	23	1	23.3%
	2008	19.22	699	—	6	4	6	115	543	23	2	20.7%
Somerset	2007	26.50	1,376	2	16	7	20	315	936	67	13	30.4%
	2008	28.67	1,477	1	18	9	25	348	989	75	12	26.6%
Waldo	2007	17.79	689	1	10	1	9	161	465	34	8	27.1%
	2008	16.19	625	1	5	—	29	203	358	28	1	35.2%
Washington	2007	22.04	725	—	—	1	41	163	490	23	7	31.2%
	2008	26.83	871	3	5	1	91	197	556	17	1	38.1%
York	2007	23.86	4,842	3	78	53	102	983	3,360	216	47	26.1%
	2008	23.46	4,742	5	77	45	93	906	3,418	173	25	23.9%
TOTALS	2007	25.66	33,796	21	393	349	793	6,677	24,060	1,260	243	29.4%
	2008	25.83	34,008	31	373	332	813	6,516	24,582	1,173	188	29.6%

Total Index Crimes by County, January–December 2008

County	Jan	Feb	Mar	Apr	May	Jun	Jul	Aug	Sept	Oct	Nov	Dec	Total
Androscoggin	197	174	164	198	254	242	309	287	220	244	199	156	2,644
Aroostook	94	76	72	98	129	133	127	143	121	139	92	91	1,315
Cumberland	601	450	546	618	690	748	831	776	648	683	623	573	7,787
Franklin	71	58	68	67	75	102	75	74	78	66	59	46	839
Hancock	59	58	79	101	101	115	110	124	93	103	79	67	1,089
Kennebec	246	205	233	274	276	297	382	420	339	307	305	267	3,551
Knox	66	60	69	94	81	108	116	85	84	89	91	91	1,034
Lincoln	31	26	42	41	47	43	50	60	59	61	34	38	532
Oxford	103	77	82	108	115	147	165	167	148	118	99	69	1,398
Penobscot	370	282	333	410	389	448	556	499	496	437	391	359	4,970
Piscataquis	31	20	33	35	43	44	37	48	45	38	27	34	435
Sagadahoc	47	40	53	44	78	43	60	67	69	85	67	46	699
Somerset	99	77	92	114	162	150	145	169	124	129	115	101	1,477
Waldo	36	30	26	44	39	70	71	63	67	91	46	42	625
Washington	49	42	47	69	85	85	95	88	77	108	82	44	871
York	352	276	345	375	381	455	522	502	430	433	348	323	4,742
2008 Total	2,452	1,951	2,284	2,690	2,945	3,230	3,651	3,572	3,098	3,131	2,657	2,347	34,008
2007 Total	2,521	1,948	2,234	2,454	2,946	3,085	3,565	3,577	3,014	3,067	2,891	2,494	33,796
% Change	-2.7%	0.2%	2.2%	9.6%	0.0%	4.7%	2.4%	-0.1%	2.8%	2.1%	-8.1%	-5.9%	0.6%

TOTAL INDEX CRIMES BY COUNTY