



BURGLARY

Burglary, also known as breaking and entering, is “the unlawful entry or attempted forcible entry of any structure to commit a felony or larceny.”

“A person is guilty of burglary if he enters or surreptitiously remains in a structure, knowing that he is not licensed or privileged to do so, with the intent to commit a crime therein.” M.R.S.A. Title 17-A, § 401

Crime Clock

1 Burglary
every
80 minutes,
53 seconds

Trend

Year	2004	2005	2006	2007	2008	2004–2008
Number reported	6,344	6,277	6,776	6,677	6,516	
% change from previous year	-3.5%	-1.1%	7.9%	-1.5%	-2.4%	% change 2.7%
Rate per 1,000	4.82	4.76	5.13	5.07	4.95	
% change from previous year	-4.2%	-1.2%	7.8%	-1.2%	-2.4%	% change 2.8%

Characteristics — 2008

Place of Occurrence

Residence	70.7%
Non-Residence.....	29.3%

Type of Entry

Forcible Entry.....	51.1%
Unlawful Entry — No Force.....	43.8%
Attempted Forcible Entry.....	5.1%

Time of Day

Night — 6 p.m.–6 a.m.....	26.7%
Day — 6 a.m.–6 p.m.....	46.4%
Unknown.....	26.9%

Months of Highest Occurrence

August	11.0%
October	10.6%
July	10.1%

Value of Property Stolen during Offense

Total.....	\$8,757,927.00
Per Incident Average.....	\$1,344.06

Clearance Rate

1,404 Offenses Cleared.....	21.5%
Arrests/Crime Ratio.....	0.21

Profile of Persons Arrested 1,339 Arrests

Age

17 and under.....	27.3%
18–24.....	41.7%
25–29.....	12.2%
30–34.....	6.0%
35–39.....	4.5%
40 and over.....	8.2%

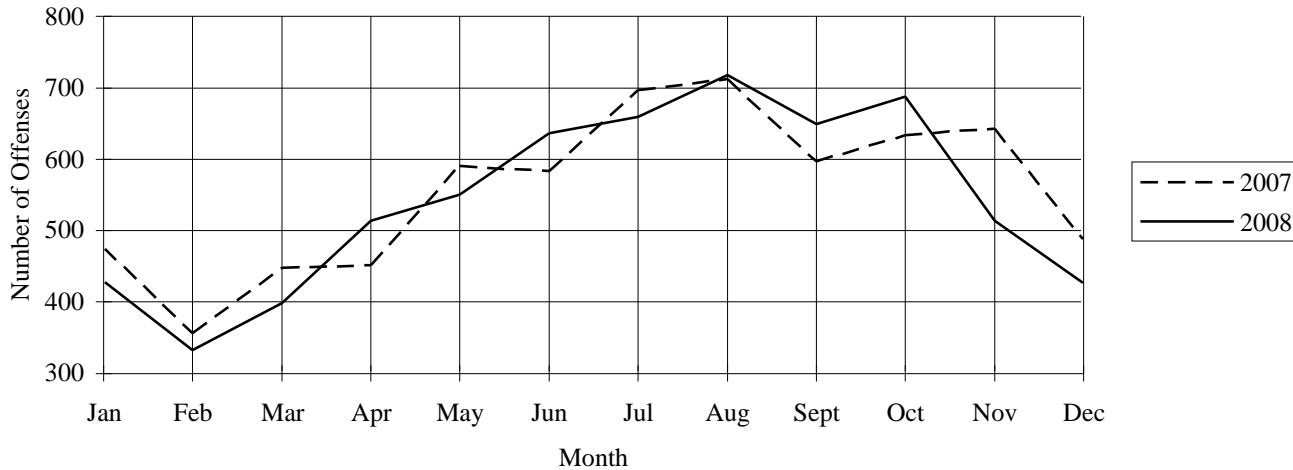
Sex

Male.....	87.2%
Female.....	12.8%

Type of Entry, 2007–2008

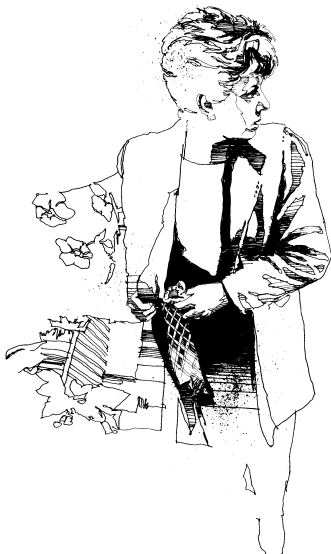
	2007	2008	% change
Forcible Entry	3,347	3,329	-0.5%
Unlawful Entry, no force	2,979	2,852	-4.3%
Attempted Forcible Entry	351	335	-4.6%
Totals	6,677	6,516	-2.4%

Burglaries — Comparative Data 2007–2008



Burglary by Time of Day, 2007–2008

	Number of Offenses			Estimated Value of Property Loss		
	2007	2008	% change	2007	2008	% change
Residence						
6 p.m.–6 a.m.	1,185	1,077	-9.1%	\$1,029,172	\$1,356,802	31.8%
6 a.m.–6 p.m.	2,217	2,225	0.4%	\$2,141,668	\$2,930,868	36.8%
Unknown	1,209	1,302	7.7%	\$1,386,213	\$2,333,619	68.3%
Subtotals	4,611	4,604	-0.2%	\$4,557,053	\$6,621,289	45.3%
Non-Residence						
6 p.m.–6 a.m.	668	661	-1.0%	\$492,645	\$683,832	38.8%
6 a.m.–6 p.m.	815	800	-1.8%	\$799,834	\$941,727	17.7%
Unknown	583	451	-22.6%	\$896,854	\$511,079	-43.0%
Subtotal	2,066	1,912	-7.5%	\$2,189,333	\$2,136,638	-2.4%
Grand Totals	6,677	6,516	-2.4%	\$6,746,386	\$8,757,927	29.8%



LARCENY-THEFT

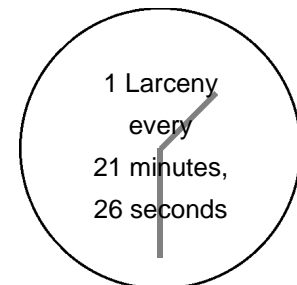
Larceny is the unlawful taking of the property of another with the intent to deprive him of ownership.

Maine has consolidated conduct denoted as Theft under Title 17-A, Chapter 15, § 351, Consolidation, embracing numerous separate crimes previously known as larceny, embezzlement, false pretenses, extortion, blackmail, shoplifting, and receiving stolen property. In properly classifying/scoring these offenses under UCR guidelines, certain offenses fall under Larceny-Theft, while others more appropriately fit under Part II offense definitions such as Fraud, Embezzlement, Stolen Property or All Other Offenses.

Theft by unauthorized taking or transfer — “1. A person is guilty of theft if he obtains or exercises unauthorized control over the property of another with intent to deprive him thereof.” M.R.S.A. Title 17-A, § 353

Burglary of a motor vehicle — “A person is guilty of theft if the actor enters a motor vehicle knowing the actor is not licensed or privileged to do so, with the intent to commit a crime therein (and that crime is theft).” M.R.S.A. Title 17-A, § 405

Crime Clock



<i>Trend</i>						
Year	2004	2005	2006	2007	2008	2004–2008
Number reported	24,087	24,153	25,161	24,060	24,582	
% change from previous year	0.1%	0.3%	4.2%	-4.4%	2.2%	
						% change 2.1%
Rate per 1,000	18.29	18.31	19.04	18.27	18.67	
% change from previous year	-0.8%	0.1%	4.0%	-4.1%	2.2%	
						% change 2.1%

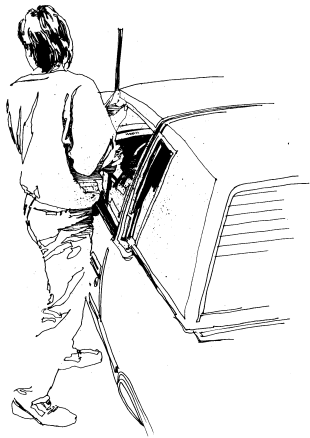
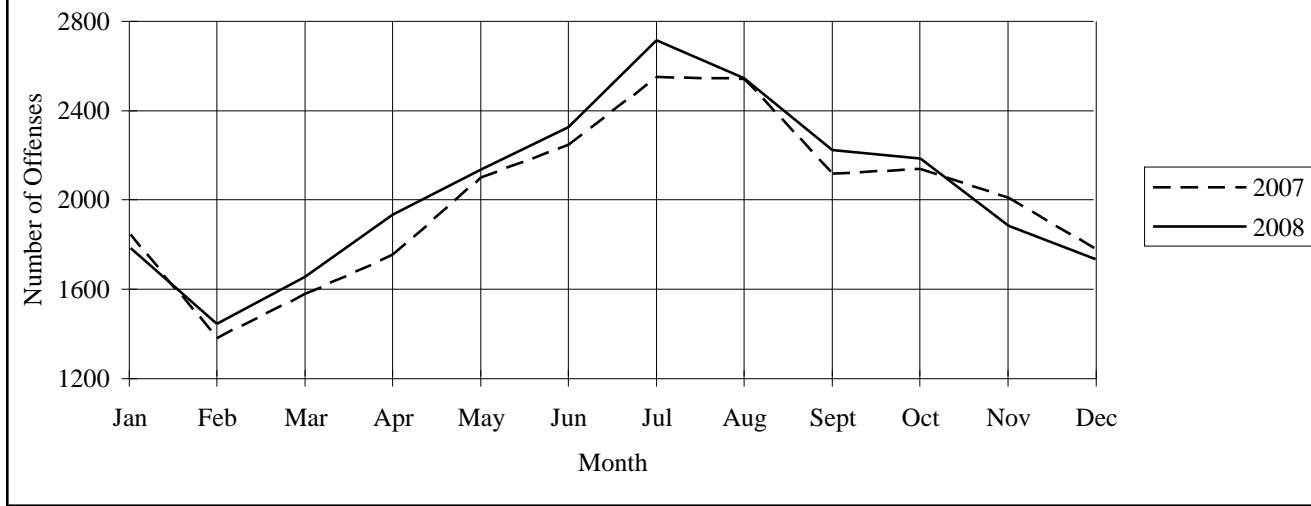
<i>Characteristics — 2008</i>	
Type of Criminal Activity	
Pocket-Picking	0.3%
Purse-Snatching	0.3%
Shoplifting	14.3%
From Motor Vehicles	16.3%
Motor Vehicle Parts & Accessories	3.4%
Bicycles	4.3%
From Buildings	13.1%
From Coin-Op Machines	0.2%
All Other	47.9%
Value per Incident	
Over \$200	32.9%
\$50 to \$200	24.5%
Under \$50	42.6%
Months of Highest Occurrence	
July	11.0%
August	10.4%
June	9.5%
Value of Property Stolen during Offense	
Total.....	\$12,490,421.00
Per Incident Average.....	\$508.11
Clearance Rate	
7,333 Offenses Cleared.....	29.8%
Arrests/Crime Ratio.....	0.26

Profile of Persons Arrested 6,465 Arrests

Age	
17 and under.....	23.9%
18–24.....	33.9%
25–29.....	13.3%
30–34.....	7.3%
35–39.....	6.8%
40 and over.....	14.9%
Sex	
Male.....	58.7%
Female.....	41.3%

<i>Larceny by Classification, 2007–2008</i>						
	Number of Offenses			Value Stolen		
	2007	2008	% change	2007	2008	% change
Pocket-Picking	51	68	33.3%	\$60,063	\$26,949	-55.1%
Purse-Snatching	57	77	35.1%	\$14,377	\$15,206	5.8%
Shoplifting	3,046	3,518	15.5%	\$355,588	\$377,492	6.2%
From Motor Vehicles	4,175	4,017	-3.8%	\$1,225,178	\$1,209,541	-1.3%
M/V Parts & Accessories	1,041	834	-19.9%	\$741,804	\$420,337	-43.3%
Bicycles	991	1,049	5.9%	\$242,622	\$252,155	3.9%
From Buildings	3,042	3,210	5.5%	\$2,939,870	\$2,181,886	-25.8%
From Coin-Op Machines	84	43	-48.8%	\$11,962	\$9,935	-16.9%
All Other	11,573	11,766	1.7%	\$6,610,709	\$7,996,920	21.0%
Totals	24,060	24,582	2.2%	\$12,202,173	\$12,490,421	2.4%

Larceny-Theft — Comparative Data 2007–2008



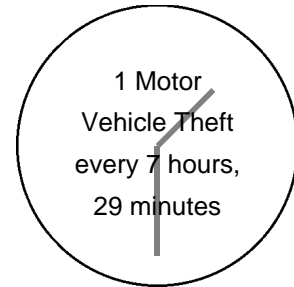
MOTOR VEHICLE THEFT

Uniform Crime Reporting defines Motor Vehicle Theft as the larceny or attempted larceny of a motor vehicle, including “joy riding.” Excluded from this class is a reported offense where there is lawful access to the vehicle, such as a family situation, or unauthorized use by others with lawful access, such as with employees.

Motor vehicles are defined by UCR as self-propelled vehicles that run on the surface of the land and not on rails, such as automobiles, trucks, buses, motorcycles, motor scooters, snowmobiles, ATVs, etc. Not included are farm equipment, construction equipment, airplanes, motorboats.

Unauthorized use of property — “1. A person is guilty of theft if: A. Knowing that he does not have the consent of the owner, he takes, operates or exercises control over a vehicle, or knowing that the vehicle has been wrongfully obtained, he rides in such vehicle.” M.R.S.A. Title 17-A § 360

Crime Clock



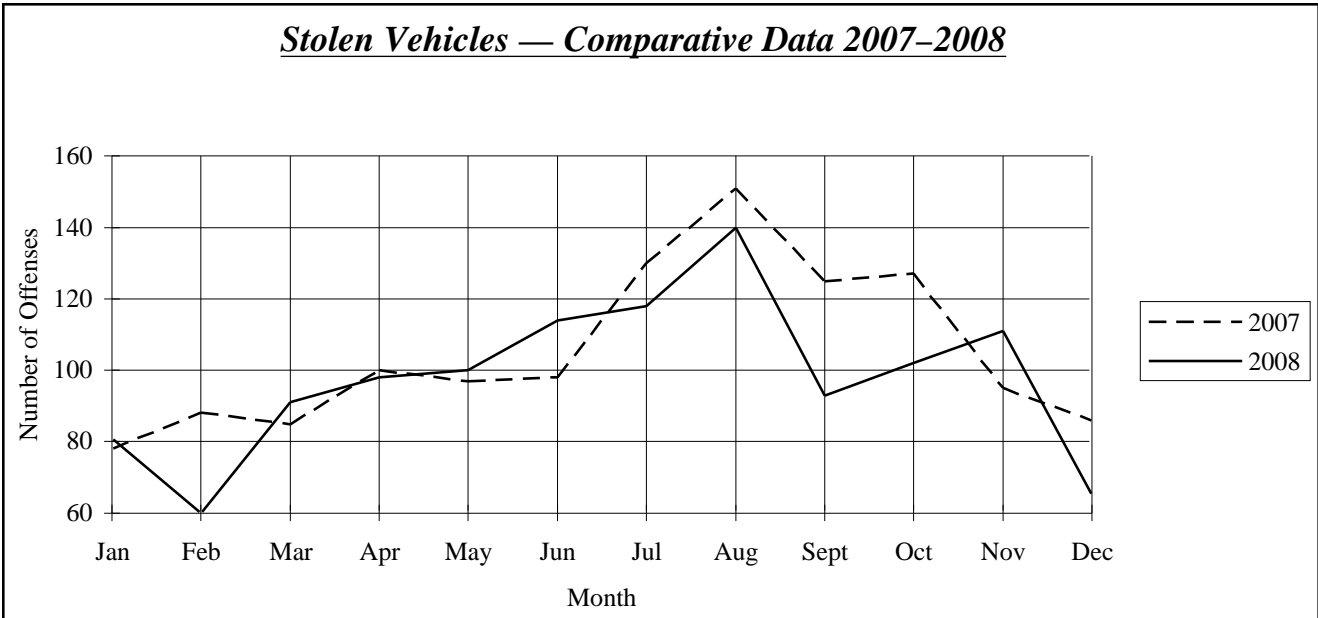
<i>Trend</i>						
Year	2004	2005	2006	2007	2008	2004–2008
Number reported	1,305	1,344	1,340	1,260	1,173	
% change from previous year	-10.0%	3.0%	-0.3%	-6.0%	-6.9%	
						% change -10.1%
Rate per 1,000	0.99	1.02	1.01	0.96	0.89	
% change from previous year	-10.8%	3.0%	-0.6%	-5.3%	-7.2%	
						% change -10.0%

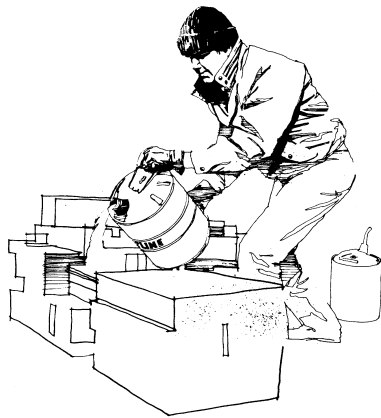
Type of Vehicle 2007–2008				
	Auto-mobiles	Trucks/Buses	Other Vehicles	Totals
2007	887	154	219	1,260
2008	772	161	240	1,173
% change	-13.0%	4.5%	9.6%	-6.9%

Locally Stolen M/Vs Recovered 2008		
	No. Recovered	% Recovered
Recovered Locally	344	29.3%
Recovered — Other Jurisdictions	157	13.4%
Total Recovered	501	42.7%
Not Recovered	672	57.3%

Characteristics — 2008	
Type of Vehicle	Value of Property Stolen during Offense
Automobiles.....65.8%	Total.....\$6,529,582.00
Trucks/Buses13.7%	Per Incident Average.....\$5,566.57
Other Vehicles20.5%	Number of Locally Stolen M/Vs Recovered501
Months of Highest Occurrence	Value of Property Recovered
August11.9%	Total\$4,041,492.00
July10.1%	Clearance Rate
October9.7%	386 Offenses Cleared.....32.9%
	Arrests/Crime Ratio.....0.28

Profile of Persons Arrested	
329 Arrests	
Age	
17 and under.....	28.0%
18–24.....	35.3%
25–29.....	12.2%
30–34.....	8.2%
35–39.....	4.3%
40 and over.....	12.2%
Sex	
Male.....	82.4%
Female.....	17.6%



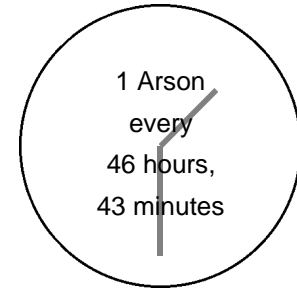


ARSON

Arson is defined by the Uniform Crime Reporting program as any willful or malicious burning or attempt to burn, with or without intent to defraud, a dwelling house, public building, motor vehicle or aircraft, personal property of another, etc. Only fires determined through investigation to have been willfully or maliciously set are classified as arson. Fires of suspicious or unknown origins are excluded.

“1. A person is guilty of arson if he starts, causes, or maintains a fire or explosion; A. On the property of another with the intent to damage or destroy property thereon; or B. On his own property or the property of another (1) with the intent to enable any person to collect insurance proceeds for the loss caused by the fire or explosion; or (2) which recklessly endangers any person or the property of another.” M.R.S.A. Title 17-A, § 802.

Crime Clock



Trend

Year	2004	2005	2006	2007	2008	2004-2008
Number reported	192	177	193	243	188	
% change from previous year	-2.0%	-7.8%	9.0%	25.9%	-22.6%	% change -2.1%
Rate per 1,000 population	0.15	0.13	0.15	0.18	0.14	
% change from previous year	—	-13.3%	15.4%	20.0%	-22.2%	% change -6.7%

Characteristics — 2008

Type of Property	
Structural	49.5%
Mobile	25.5%
Other	25.0%
Months of Highest Occurrence	
April	19.1%
May	16.0%
July	10.6%
Value of Property Damaged	
Total	\$3,107,823.00
Per Incident Average	\$16,530.97
Clearance Rate	
75 Offenses Cleared	39.9%
Arrests/Crime Ratio	0.34

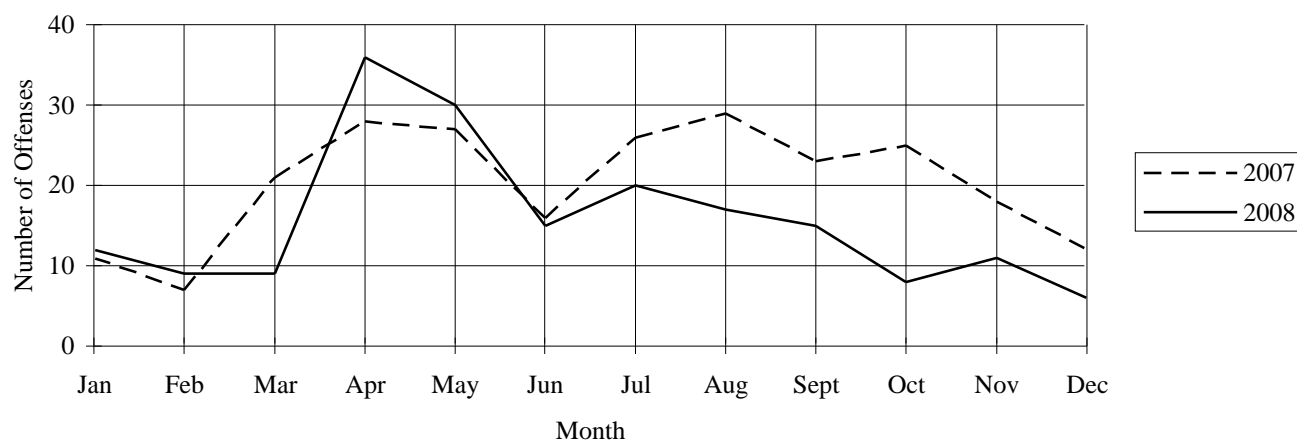
Profile of Persons Arrested 63 Arrests

Age	
17 and under	44.4%
18-24	27.0%
25-29	4.8%
30-34	11.1%
35-39	4.8%
40 and over	7.9%
Sex	
Male	85.7%
Female	14.3%

Arson by Property Type, 2007-2008

Classification	Number of Offenses			Estimated Value of Property Loss		
	2007	2008	% change	2007	2008	% change
Structural — Residential	100	63	-37.0%	\$2,897,620	\$2,423,009	-16.4%
Structural — Non-residential	53	30	-43.4%	\$782,316	\$80,931	-89.7%
Mobile (cars, trailers, boats, etc.)	36	48	33.3%	\$132,976	\$596,072	348.3%
All other (crops, fields, signs, etc.)	54	47	-13.0%	\$12,468	\$7,811	-37.4%
Totals	243	188	-22.6%	\$3,825,380	\$3,107,823	-18.8%

Arsons — Comparative Data 2007–2008



Arson Breakdown by County

County	Number of Offenses			Estimated Value of Property Loss		
	2007	2008	% change	2007	2008	% change
Androscoggin	20	20	—	\$294,724	\$72,973	-75.2%
Aroostook	4	3	-25.0%	\$7,600	\$107,400	1,313.2%
Cumberland	47	56	19.1%	\$499,462	\$369,327	-26.1%
Franklin	8	3	-62.5%	\$213,030	\$2,000	-99.1%
Hancock	4	9	125.0%	\$12,500	\$206,200	1,549.6%
Kennebec	22	17	-22.7%	\$262,100	\$265,681	1.4%
Knox	2	1	-50.0%	\$700	—	-100.0%
Lincoln	5	4	-20.0%	\$89,000	\$16,525	-81.4%
Oxford	7	5	-28.6%	\$567,500	\$54,500	-90.4%
Penobscot	40	27	-32.5%	\$437,288	\$151,576	-65.3%
Piscataquis	8	2	-75.0%	\$2,150	\$3,000	39.5%
Sagadahoc	1	2	100.0%	\$500	\$5,000	900.0%
Somerset	13	12	-7.7%	\$152,250	\$254,010	66.8%
Waldo	8	1	-87.5%	\$135,300	—	-100.0%
Washington	7	1	-85.7%	\$210,275	\$5,000	-97.6%
York	47	25	-46.8%	\$941,001	\$1,594,631	69.5%
Totals	243	188	-22.6%	\$3,825,380	\$3,107,823	-18.8%

Note: Arson figures shown by UCR may not agree with figures shown by the Fire Marshal's office due to local departments handling cases informally.