

Characteristics — 2013

Victim-Offender Relationship

Non-Stranger to Non-Stranger	87.5%
Stranger to Stranger	4.2%
Unknown	8.3%

Type of Weapon Used

Firearm	50.0%
Knife/Cutting Instrument	20.8%
Other Dangerous Weapon	8.3%
Hands, Fists, Feet	20.8%
Other/Undetermined	—

Months of Highest Occurrence

November	16.7%
Mar., May, June	12.5%
Apr., July, Sept., Oct.	8.3%

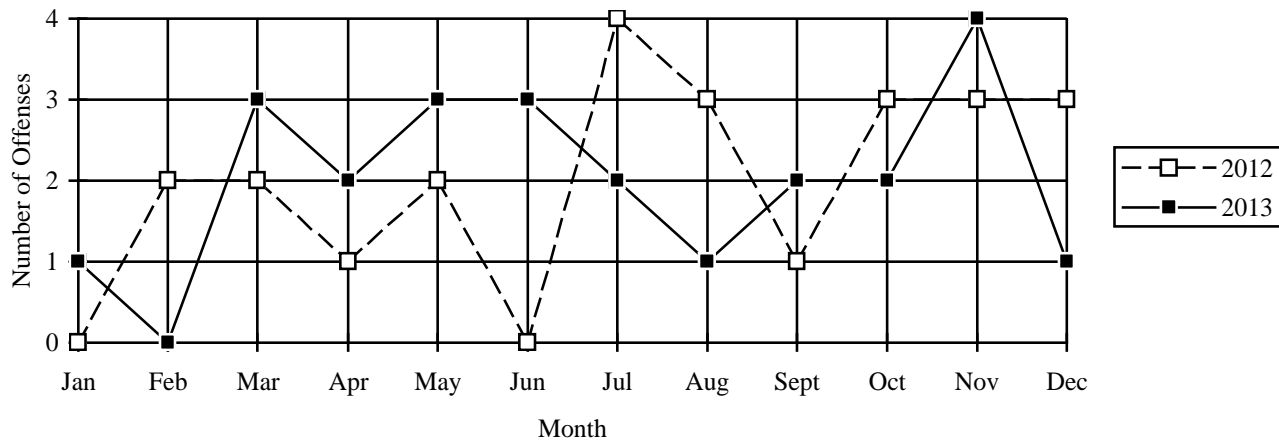
Value of Property Stolen during Offense

Total	\$15,000.00
Per Incident Average.....	\$625.00

Clearance Rate

24 Offenses Cleared	100.0%
Arrests/Crime Ratio.....	0.75

Murder & Non-Negligent Manslaughter — Comparative Data
2012-2013



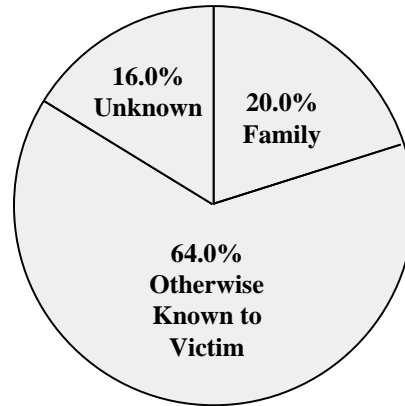
Profile of Persons Arrested — 18 Arrests

Age		Sex	
17 and under.....	—	Male.....	94.4%
18-24.....	50.0%	Female.....	5.6%
25-29.....	5.6%		
30-34.....	16.7%		
35-39.....	5.6%		
40 and over.....	22.2%		

4 offenders committed suicide

Murder Distribution by Relationship (Victim to Offender)

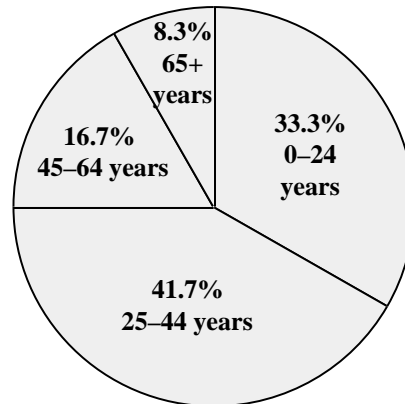
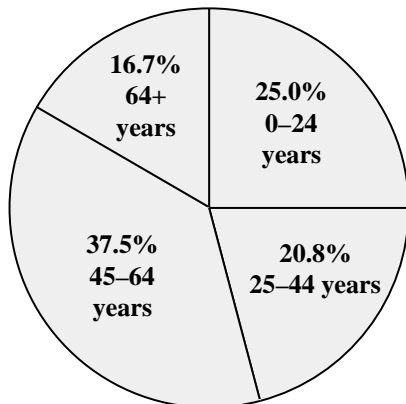
Relationship*	Number	% of Total
Wife	2	8.0%
Son	1	4.0%
Daughter	1	4.0%
Mother	1	4.0%
Total Family	5	20.0%
Girlfriend/Boyfriend	6	24.0%
Friend	2	8.0%
Acquaintance	8	32.0%
Stranger	2	8.0%
Unknown	2	8.0%
Total Other	20	80.0%
TOTAL	25	100.0%



*Number of relationships may not agree with number of victims due to instances of multiple offenders or multiple victims.

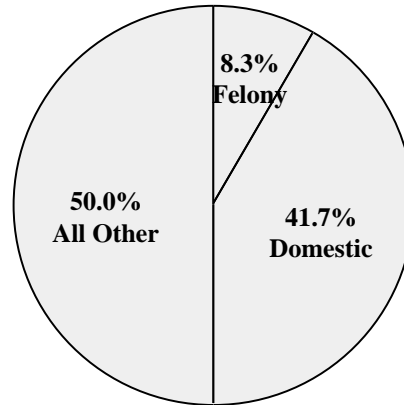
Murder Distribution by Age and Sex

Age of Victims	Male	Female	Total	Age of Offenders	Male	Female	Total
0–14 years	—	1	1	0–14 years	—	—	0
15–24 years	2	3	5	15–24 years	7	1	8
25–34 years	2	2	4	25–34 years	6	—	6
35–44 years	—	1	1	35–44 years	4	—	4
45–54 years	3	2	5	45–54 years	2	—	2
55–64 years	3	1	4	55–64 years	2	—	2
65+ years	2	2	4	65+ years	2	—	2
Total	12	12	24	Total	23	1	24



Murder Distribution by Circumstances

Circumstance**	Number	% of Total
Arson	2	8.3%
Felony Total*	2	8.3%
Domestic Conflict	10	41.7%
Child Abuse/Neglect	1	4.2%
Drug Related	1	4.2%
Other	10	41.7%
Other than Felony Total	22	91.7%
TOTAL	24	100.0%

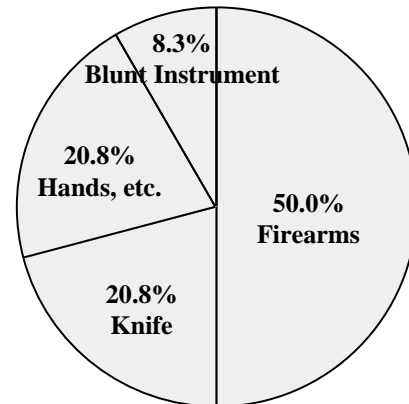


*Felony murder is defined as a killing which occurs in conjunction with the commission of another crime such as a robbery, arson, sexual assault or other felonious activities.

**Due to the unlimited set of possible circumstances surrounding homicides, it is difficult to provide a clear-cut or precise statistical category. In the intent of uniformity, the number of circumstance categories has been kept to a minimum. Caution is suggested in drawing generalizations from the data without more deliberate analysis. This table makes no attempt to analyze the motives of offenders, but rather to display general circumstances surrounding the events.

Murder Distribution by Weapon

Weapon	Number	% of Total
Firearm	12	50.0%
Knife, Cutting Instrument	5	20.8%
Hands, Fists, Feet	5	20.8%
Blunt Instrument	2	8.3%
Total	24	100.0%



FORCIBLE RAPE

Forcible rape is the carnal knowledge of a female forcibly and against her will.

“A person is guilty of gross sexual assault if that person engages in a sexual act (direct genital contact) with another person and the person submits as a result of compulsion.”
M.R.S.A. Title 17-A, § 253

This category is broken down into two categories: Rape by Force, and Attempted Forcible Rape. Carnal abuse without force (statutory rape) and other sex offenses are not included.

Forcible rape differs from other violent crimes in that the victim, in many cases, is reluctant to report the offense to police. The investigation by police, medical examination, court procedure, embarrassment and fear of any accompanying stigma have a deterrent effect on the victim’s willingness to make the offense known to police.

Maine has experienced increased availability in services such as rape crisis centers providing 24-hour hot lines and counselors, witness/victim assistants in district attorneys’ offices, improved medical practices and increased sensitivity by law enforcement personnel. The increased number of offenses identified in this report may be, in part, influenced by the increasing confidence of victims in the criminal justice system.

Crime Clock



<i>Trend</i>						
Year	2009	2010	2011	2012	2013	2009–2013
Number reported	374	389	391	368	359	
% change from previous year	0.3%	4.0%	0.5%	-5.9%	-2.4%	% change -4.0%
Rate per 1,000	0.28	0.29	0.29	0.28	0.27	
% change from previous year	—	3.6%	—	-3.4%	-3.5%	% change -3.5%

Characteristics — 2013

Type of Offense

Rape by Force	98.6%
Attempts to Rape	1.4%

Months of Highest Occurrence

July	11.4%
May, June	9.7%
August	9.5%

Value of Property Stolen during Offense

Total	\$80.00
Per Incident Average	\$0.22

Clearance Rate

163 Offenses Cleared	45.4%
Arrests/Crime Ratio.....	0.21

Profile of Persons Arrested 75 Arrests

Age

17 and under	21.3%
18–24	24.0%
25–29	13.3%
30–34	13.3%
35–39	13.3%
40 and over	14.7%

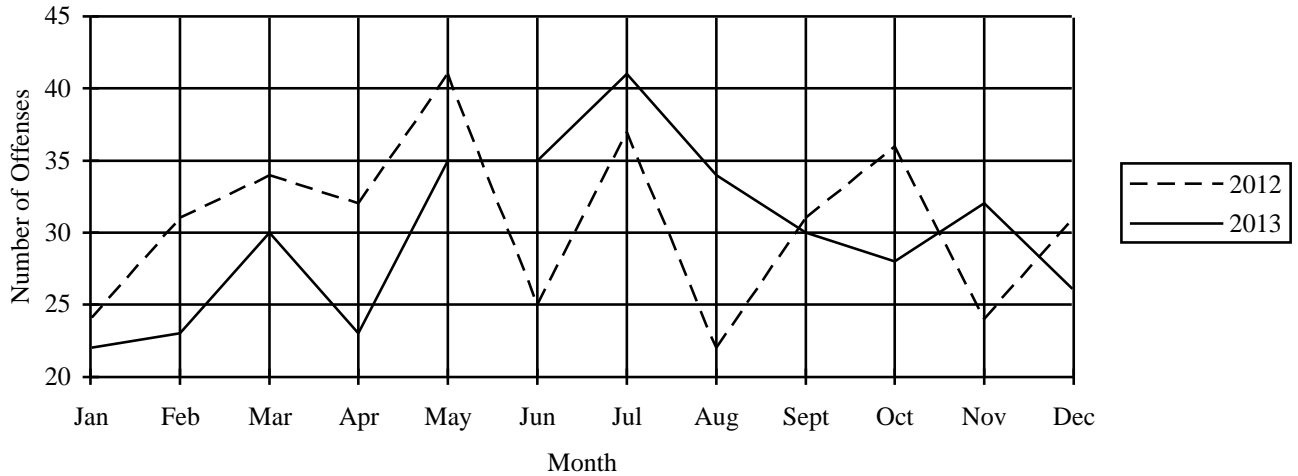
Sex

Male	100.0%
Female	—

Rape by Type of Offense, 2012–2013

	2012	2013	% change
Forcible Rape	357	354	-0.8%
Attempted Rape	11	5	-54.5%
Totals	368	359	-2.4%

Rapes — Comparative Data 2012–2013



ROBBERY

Robbery is defined by UCR as “the felonious and forcible taking of the property of another against his will by violence or by putting him in fear.” All attempts to rob are included in the UCR report.

“1. A person is guilty of robbery if he commits or attempts to commit theft and at the time of his actions: A. He recklessly inflicts bodily injury on another; B. He threatens to use force against any person present with the intent (1) to prevent or overcome resistance to the taking of the property, ...; or (2) to compel the person in control of the property to give it up ...; C. He uses physical force on another with the intent enumerated in paragraph B, subparagraphs (1) and (2); D. He intentionally inflicts or attempts to inflict bodily injury on another; or E. He or an accomplice to his knowledge is armed with a dangerous weapon ... ” M.R.S.A. Title 17-A, § 65, 1

Crime Clock

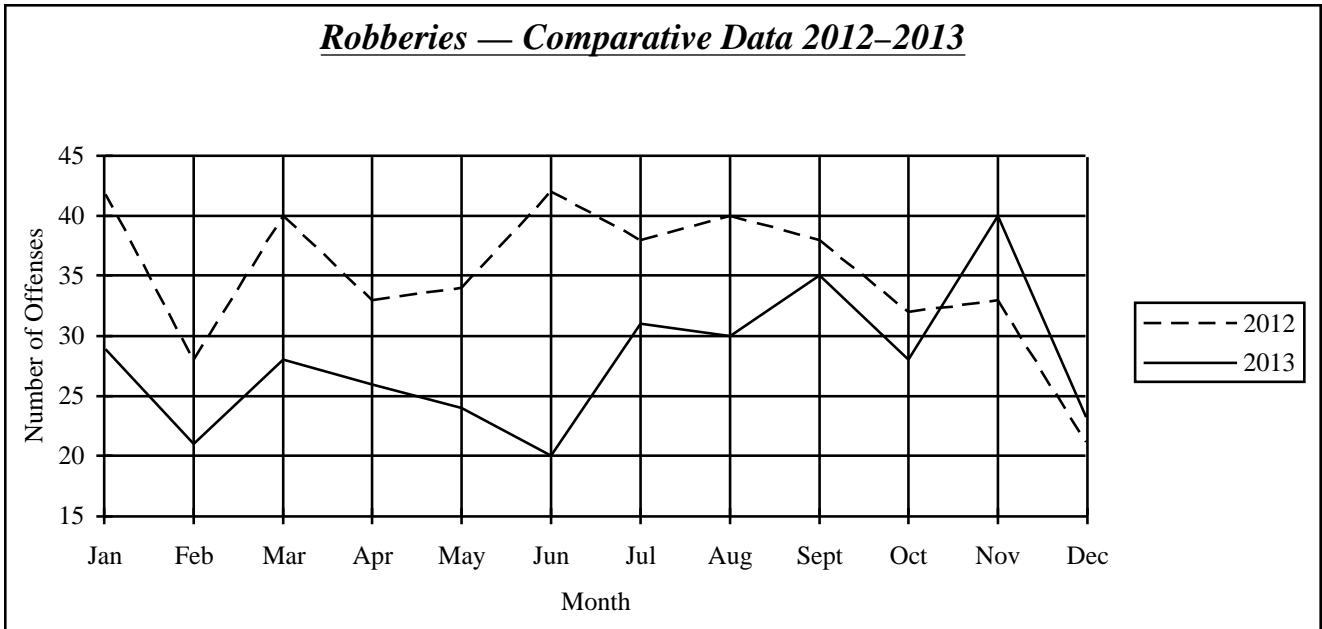


Trend

Year	2009	2010	2011	2012	2013	2009–2013
Number reported	398	416	370	421	335	
% change from previous year	19.9%	4.5%	-11.1%	13.8%	-20.4	% change -15.8%
Rate per 1,000	0.30	0.31	0.28	0.32	0.25	
% change from previous year	20.0%	3.3%	-9.7%	14.3%	-21.2%	% change -15.9%

Characteristics — 2013

Type of Weapon Used	Months of Highest Occurrence
Firearm22.1%	November11.9%
Knife/Cutting Instrument12.2%	September10.4%
Other Dangerous Weapon12.2%	July9.3%
Hands, Fists, Feet53.4%	
Place of Occurrence	Value of Property Stolen during Offense
Street, Alley31.3%	Total\$338,733.00
Business Establishment22.7%	Per Incident Average\$1,011.14
Residence23.0%	Clearance Rate
Banks5.1%	169 Offenses Cleared50.4%
Miscellaneous17.9%	Arrests/Crime Ratio0.52



Profile of Persons Arrested
174 Arrests

Age

17 and under	11.5%
18–24	38.5%
25–29	17.2%
30–34	13.2%
35–39	10.3%
40 and over	9.2%

Sex

Male	87.4%
Female	12.6%

Robbery by Weapon Type, 2012–2013

	2012	2013	% change
Firearm	92	74	–19.6%
Knife	53	41	–22.6%
Other Weapon	52	41	–21.2%
Strong Arm	224	179	–20.1%
Totals	421	335	–20.4%

Robbery by Classification, 2012–2013

Classification	Number of Offenses			Value Stolen		
	2012	2013	% change	2012	2013	% change
Highway	97	105	8.2%	\$15,999	\$22,419	40.1%
Commercial House	98	41	–58.2%	\$248,733	\$35,744	–85.6%
Gas/Service Station	8	6	–25.0%	\$4,215	\$4,960	17.7%
Convenience Store	33	29	–12.1%	\$17,035	\$7,876	–53.8%
Residence	103	77	–25.2%	\$63,688	\$80,561	26.5%
Bank/Lending Inst.	18	17	–5.6%	\$39,297	\$54,168	37.8%
Miscellaneous	64	60	–6.3%	\$26,131	\$133,005	409.0%
Totals	421	335	–20.4%	\$415,098	\$338,733	–18.4%

<i>Robbery Type by County</i>								
County	Highway	Commercial House	Gas Station	Convenience Store	Residence	Bank	Misc.	Total
Androscoggin								
2013	7	8	—	4	12	1	4	36
2012	10	15	2	7	25	2	3	64
Aroostook								
2013	—	—	—	—	2	—	—	2
2012	1	1	—	—	5	1	1	9
Cumberland								
2013	47	14	3	11	21	6	18	120
2012	43	23	1	16	29	5	20	137
Franklin								
2013	—	1	—	1	1	—	—	3
2012	—	1	—	1	—	—	2	4
Hancock								
2013	—	1	—	1	1	—	1	4
2012	1	3	—	—	1	—	1	6
Kennebec								
2013	14	2	—	1	10	2	7	36
2012	7	19	—	2	12	—	4	44
Knox								
2013	—	—	—	—	1	1	—	2
2012	1	4	—	—	1	—	—	6
Lincoln								
2013	—	—	—	—	1	—	2	3
2012	—	—	—	1	1	1	1	4
Oxford								
2013	3	—	—	1	1	—	—	5
2012	1	2	—	—	1	2	1	7
Penobscot								
2013	22	10	2	3	14	2	3	56
2012	19	15	4	2	11	—	10	61
Piscataquis								
2013	1	—	—	1	1	—	—	3
2012	1	1	—	—	—	—	—	2
Sagadahoc								
2013	—	1	—	—	1	—	—	2
2012	2	3	—	—	1	—	—	6
Somerset								
2013	3	—	—	—	1	—	—	4
2012	2	3	—	2	5	2	—	14
Waldo								
2013	—	—	—	—	—	—	—	0
2012	—	—	—	—	1	—	1	2
Washington								
2013	—	1	—	—	2	—	—	3
2012	—	—	—	—	—	—	1	1
York								
2013	8	3	1	6	8	5	25	56
2012	9	8	1	2	10	5	19	54

AGGRAVATED ASSAULT

An aggravated assault is an attempt or offer, with unlawful force or violence, to do physical injury to another. This type of assault is usually accompanied by the use of a weapon or other means likely to produce death or serious bodily injury. Attempts are included since it is not necessary that an injury result when a gun, knife, or other weapon is used which could and probably would result in serious personal injury if the crime is successfully completed. Assaults with personal weapons (hands, fists, feet) are scored as aggravated if there is personal injury requiring more than simple first aid to treat.

Aggravated Assault: "1. A person is guilty of aggravated assault if he ... causes: A. Serious bodily injury to another; or, B. Bodily injury to another with use of a dangerous weapon; or, C. Bodily injury to another under circumstances manifesting extreme indifference to the value of human life." M.R.S.A. Title 17-A, § 208

Assault while Hunting: "1. A person is guilty of assault while hunting if ... he, with criminal negligence, causes bodily injury to another with the use of a dangerous weapon." M.R.S.A. Title 17-A, § 208-A

Assault on an Officer: "1. A person is guilty of assault on an officer if: A. ... causes bodily injury to a law enforcement officer while the officer is in the performance of his official duties; or, B. While in custody in a penal institution or other facility pursuant to an arrest or ... court order, he commits an assault on a member of the staff of the institution ..." M.R.S.A. Title 17-A, § 752-A

Not included in this class are simple (non-aggravated) assaults. Simple assaults are non-index offenses, although a record is kept of these assaults on an "offenses known to police" form. During 2013 there were 10,739 simple assaults reported (-9.0% from 2012), with a clearance rate of 73.8%. These simple assaults are included in the report of domestic assaults, and assaults on law enforcement officers.

Crime Clock



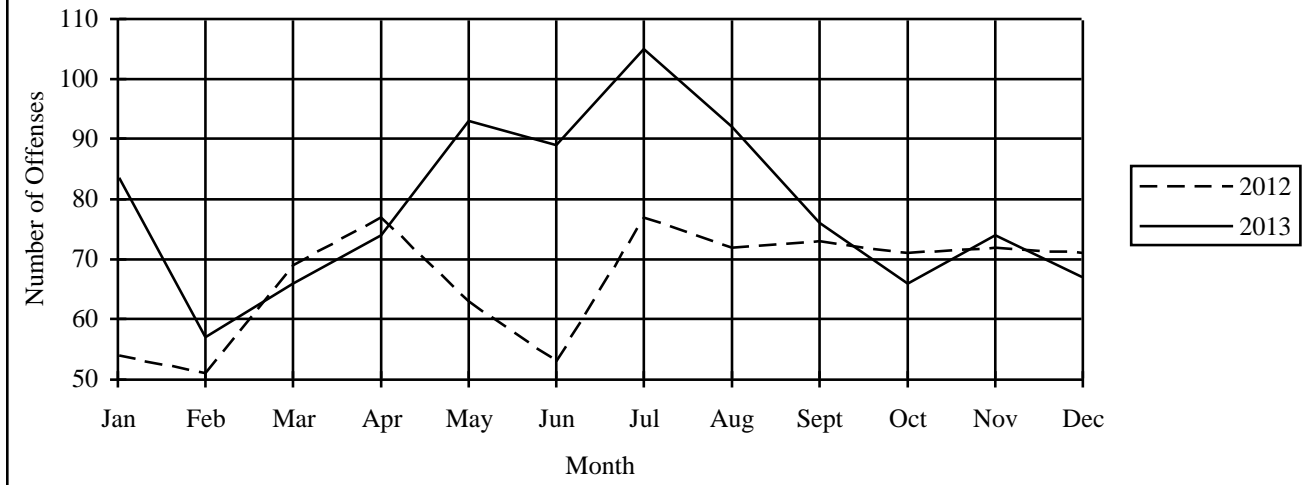
<i>Trend</i>						
Year	2009	2010	2011	2012	2013	2009–2013
Number reported	742	760	843	803	943	
% change from previous year	-8.7%	2.4%	10.9%	-4.7%	17.4%	
						% change 27.1%
Rate per 1,000	0.56	0.57	0.63	0.60	0.71	
% change from previous year	-9.7%	1.8%	10.5%	-4.8%	18.3%	
						% change 26.8%

<i>Characteristics — 2013</i>	
Type of Weapon Used	
Firearms	4.2%
Knife/Cutting Instrument	18.6%
Other Dangerous Weapons	26.8%
Hands, Fists, Feet	50.4%
Months of Highest Occurrence	
July	11.1%
May	9.9%
August	9.8%
Clearance Rate	
742 Offenses Cleared	78.7%
Arrests/Crime Ratio	0.57

<i>Profile of Persons Arrested</i>	
533 Arrests	
Age	
17 and under	7.7%
18–24	24.0%
25–29	18.6%
30–34	14.6%
35–39	9.8%
40 and over	25.3%
Sex	
Male	84.6%
Female	15.4%

<i>Aggravated Assault by Weapon Type, 2012–2013</i>					
	Firearm	Knife	Other Weapon	Strong Arm	Totals
2012	71	162	226	344	803
2013	40	175	253	475	943
% change	-43.7%	8.0%	11.9%	38.1%	17.4%

Aggravated Assaults — Comparative Data 2012–2013



DOMESTIC VIOLENCE

Due to problems of abuse and domestic violence between family or household members, the 109th Maine Legislature enacted a law entitled “An Act Concerning Abuse between Household and Family Members.” The law, Chapter 578 of the Public Laws of 1979, mandates the reporting of domestic violence data by law enforcement agencies and the collection of such data (Title 19, § 770 [1]) by the Uniform Crime Reporting Unit, State Bureau of Identification, Department of Public Safety.

During 2013:

- Of a grand total of 11,682 reported assaults, 5,487 or 47.0% were identified as occurring between household

or family members.

- Domestic assaults decreased 1.9% (106 offenses) from the 2012 figure of 5,593.
- Law enforcement agencies cleared 4,532 domestic assaults for a clearance rate of 82.6%.
- Of the 5,487 domestic assaults, 96.6% involved personal weapons (hands, fists, feet).

Crime Clock



Breakdown of Reported Domestic Assaults by County, 2012–2013

County	2012 Number of Offenses	2012 Percent of Total	2013 Number of Offenses	2013 Percent of Total	Percent Change Offenses
Androscoggin	588	10.5%	653	11.9%	11.1%
Aroostook	239	4.3%	199	3.6%	-16.7%
Cumberland	1,039	18.6%	935	17.0%	-10.0%
Franklin	173	3.1%	165	3.0%	-4.6%
Hancock	128	2.3%	97	1.8%	-24.2%
Kennebec	694	12.4%	579	10.6%	-16.6%
Knox	95	1.7%	131	2.4%	37.9%
Lincoln	119	2.1%	120	2.2%	0.8%
Oxford	223	4.0%	246	4.5%	10.3%
Penobscot	513	9.2%	493	9.0%	-3.9%
Piscataquis	38	0.7%	56	1.0%	47.4%
Sagadahoc	70	1.3%	65	1.2%	-7.1%
Somerset	340	6.1%	400	7.3%	17.6%
Waldo	121	2.2%	116	2.1%	-4.1%
Washington	136	2.4%	127	2.3%	-6.6%
York	1,077	19.3%	1,105	20.1%	2.6%
Totals	5,593	100.0%	5,487	100.0%	-1.9%

<i>Domestic Violence Assaults Comparison Data 2012–2013</i>				
Situations/Relationships	2012 Number of Offenses	2012 % of Total	2013 Number of Offenses	2013 % of Total
Male Assault on Female				
Firearm	12	0.2	12	0.2
Knife, Cutting Instrument	30	0.5	28	0.5
Other Dangerous Weapon	33	0.6	51	0.9
Hands, Aggravated Injury	82	1.5	120	2.2
Hands, Not Aggravated	3,018	54.0	2,724	49.6
Total Male Assault on Female	3,175	56.8	2,935	53.5
Female Assault on Male				
Firearm	8	0.1	1	<.1
Knife, Cutting Instrument	21	0.4	18	0.3
Other Dangerous Weapon	25	0.4	20	0.4
Hands, Aggravated Injury	15	0.3	12	0.2
Hands, Not Aggravated	1,079	19.3	930	16.9
Total Female Assault on Male	1,148	20.5	981	17.9
Parent Assault on Child				
Firearm	2	<.1	1	<.1
Knife, Cutting Instrument	1	<.1	1	<.1
Other Dangerous Weapon	11	0.2	14	0.3
Hands, Aggravated Injury	45	0.8	76	1.4
Hands, Not Aggravated	447	8.0	508	9.3
Total Parent Assault on Child	506	9.0	600	10.9
Child Assault on Parent				
Firearm	—	<.1	2	<.1
Knife, Cutting Instrument	1	<.1	7	0.1
Other Dangerous Weapon	2	<.1	10	0.2
Hands, Aggravated Injury	2	<.1	10	0.2
Hands, Not Aggravated	199	3.6	399	7.3
Total Child Assault on Parent	204	3.6	428	7.8
All Other Domestic Assaults				
Firearm	1	<.1	2	<.1
Knife, Cutting Instrument	7	0.1	11	0.2
Other Dangerous Weapon	11	0.2	11	0.2
Hands, Aggravated Injury	33	0.6	59	1.1
Hands, Not Aggravated	508	9.1	460	8.4
Total Male Assault on Female	560	10.0	543	9.9
Grand Total All Domestic Assaults	5,593	100.0	5,487	100.0
Domestic Assaults/Type of Weapon				
Firearm	23	0.4	18	0.3
Knife, Cutting Instrument	60	1.1	65	1.2
Other Dangerous Weapon	82	1.5	106	1.9
Hands, Aggravated Injury	177	3.2	277	5.0
Hands, Not Aggravated	5,251	93.9	5,021	91.5
Total Domestic Assaults	5,593	100.0	5,487	100.0
Total All Domestic Assaults	5,593	44.4	5,487	47.0
Total All Reported Assaults	12,599	100.0	11,682	100.0