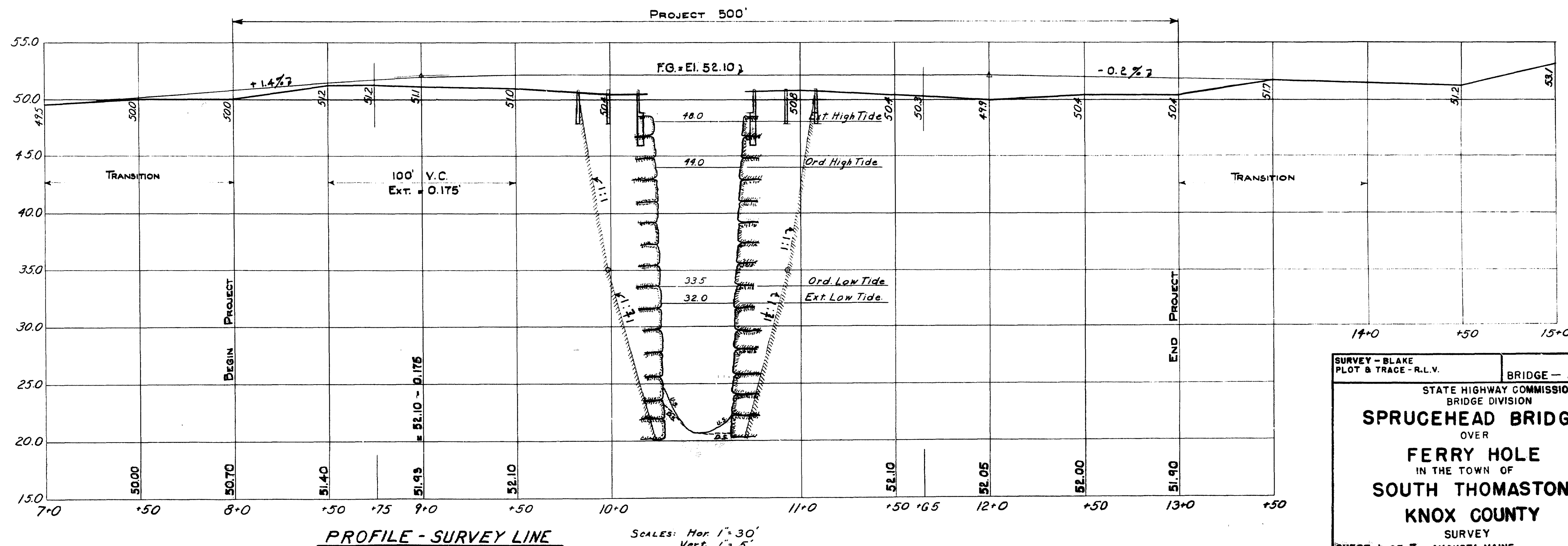
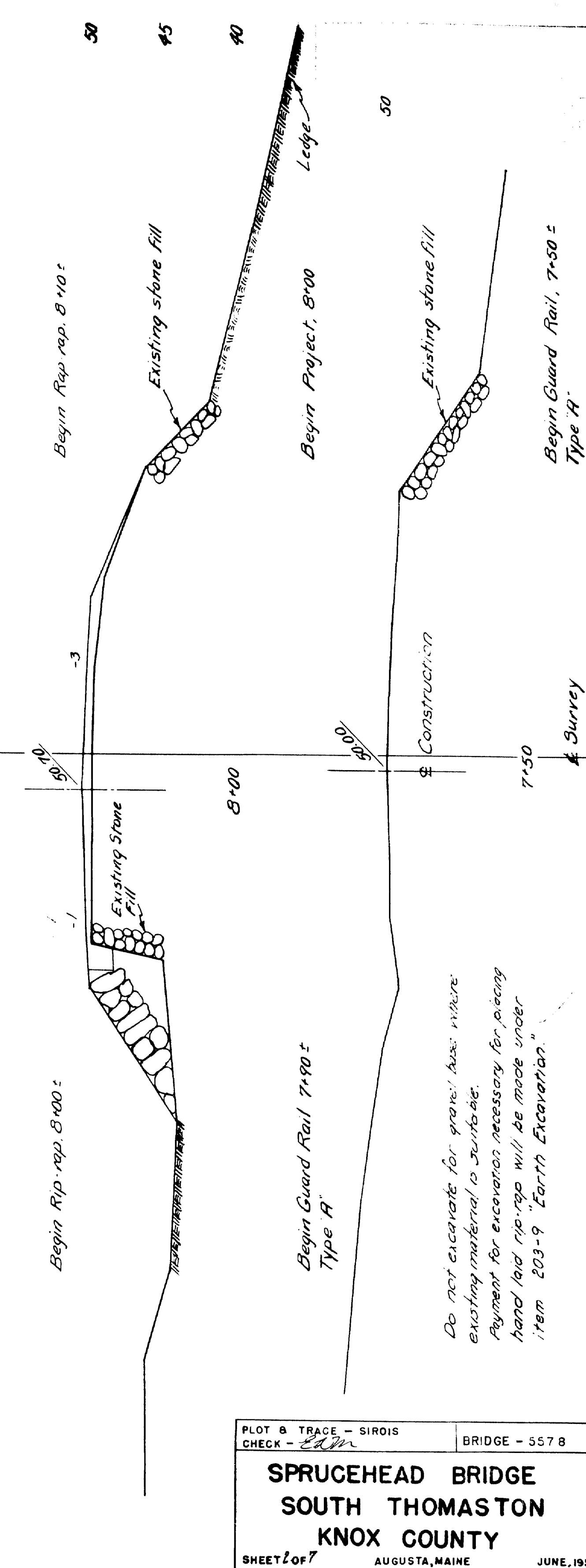
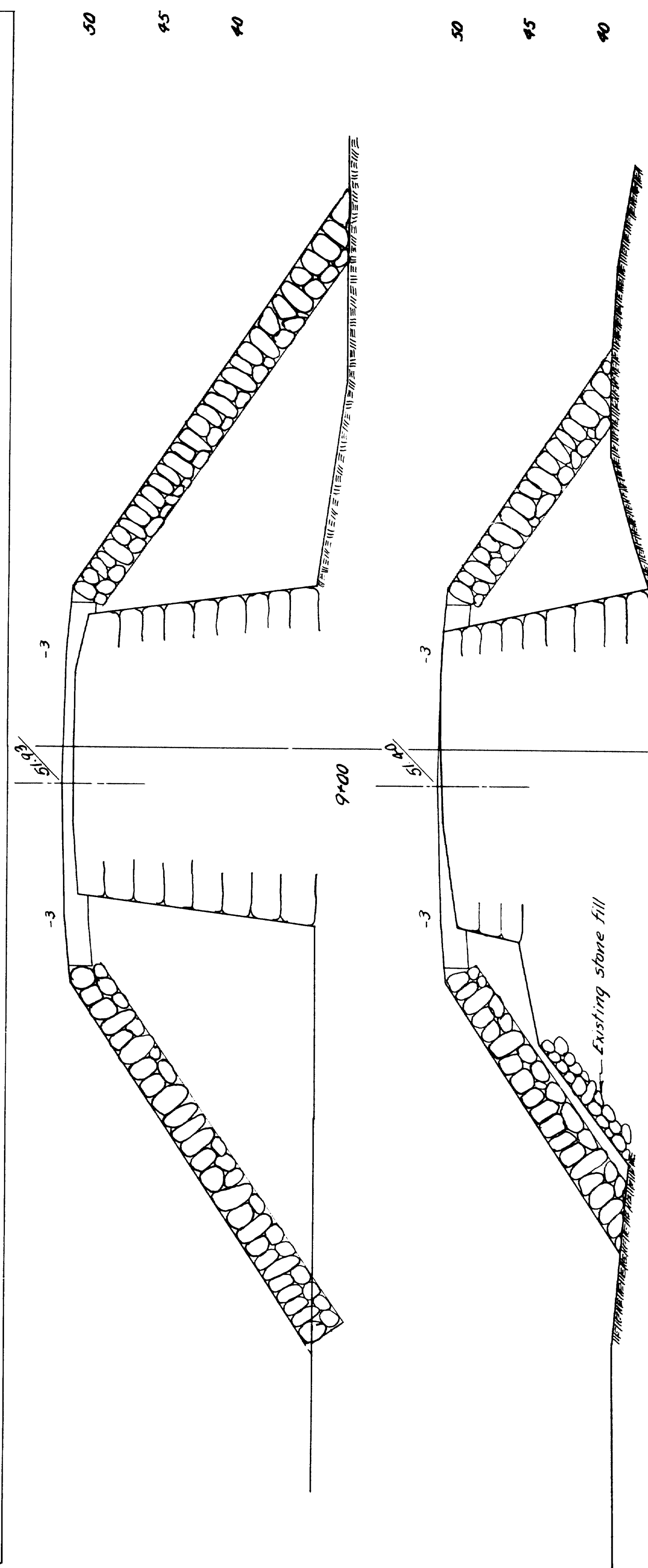
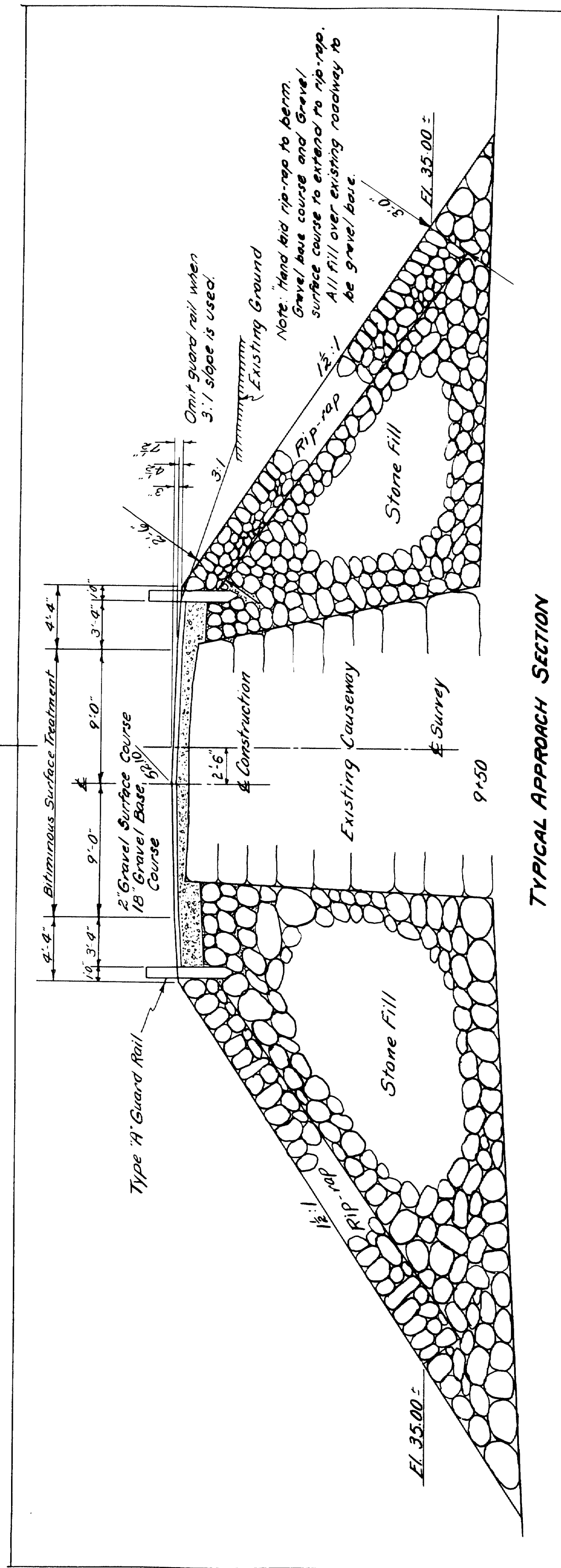
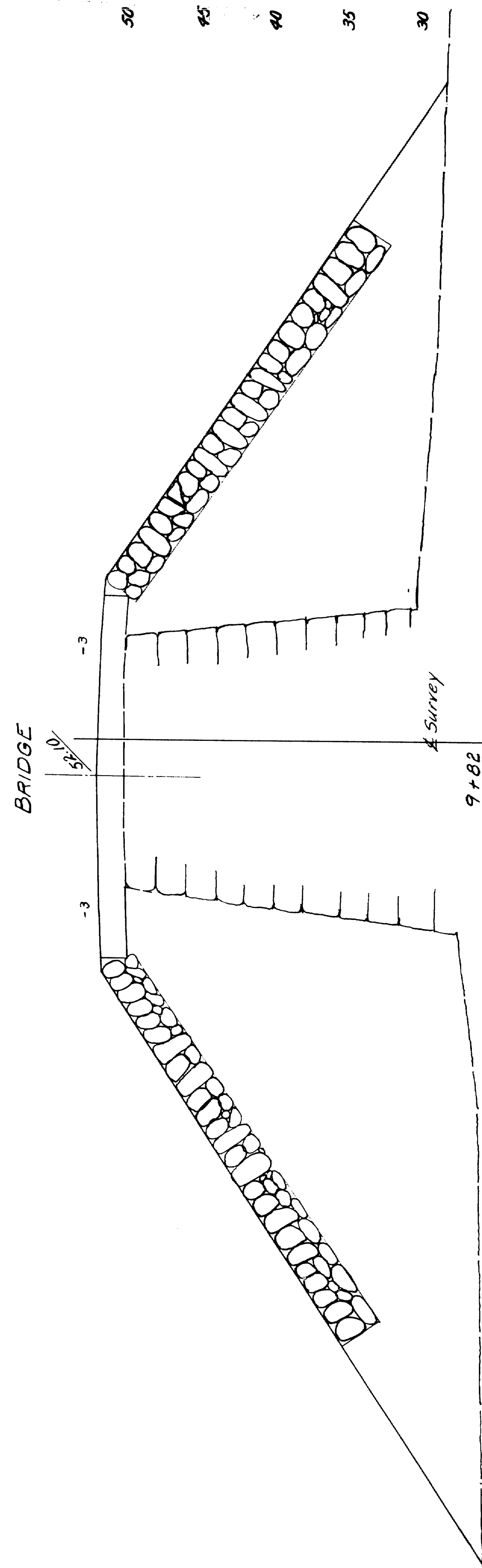


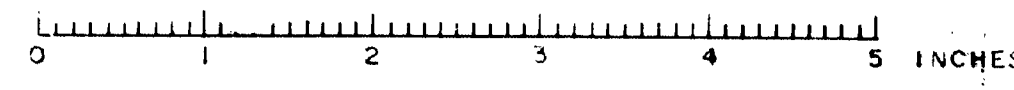
Narrow surface treated gravel.



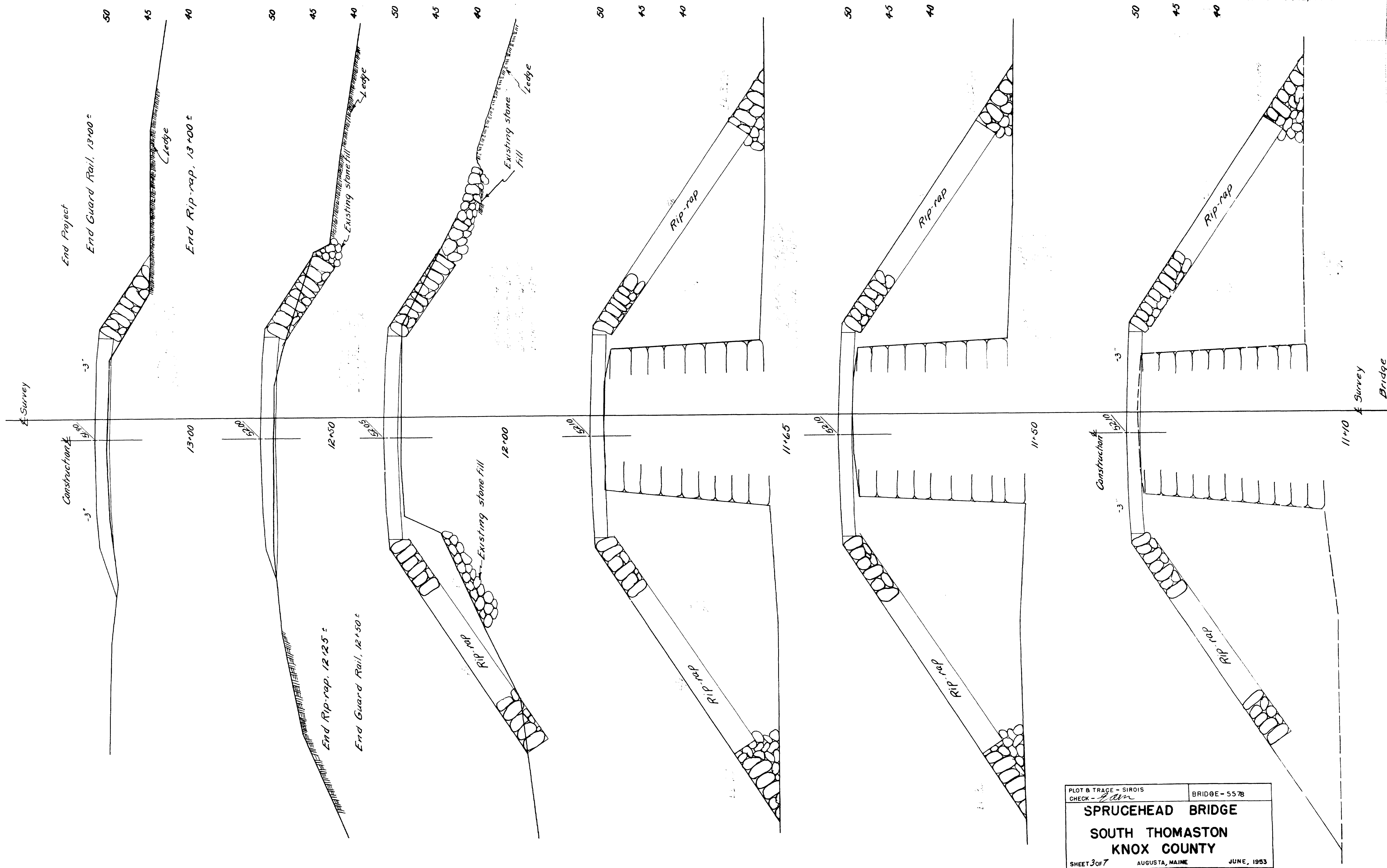


PLOT & TRACE - SIROIS
CHECK - *Edm* BRIDGE - 5578
SPRUCEHEAD BRIDGE
SOUTH THOMASTON
KNOX COUNTY
SHEET 2 OF 7 AUGUSTA, MAINE JUNE, 1953

Do not excavate for gravel base where existing material is suitable.
Payment for excavation necessary for placing hand laid rip-rap will be made under item 203-9 "Earth Excavation."



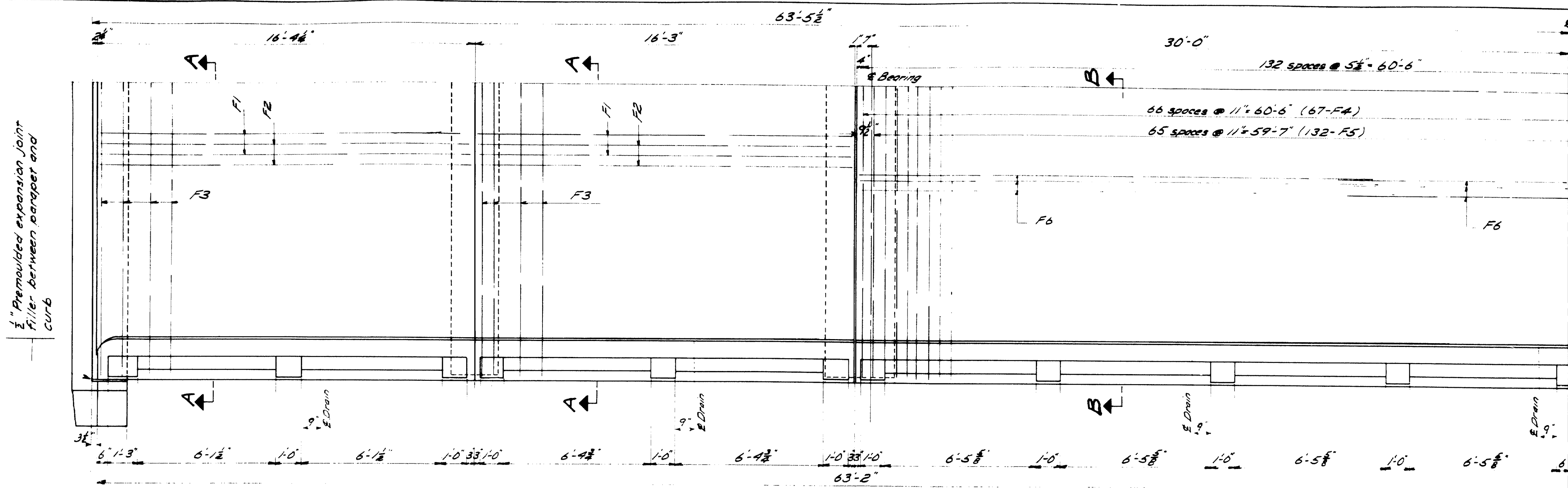
60-91



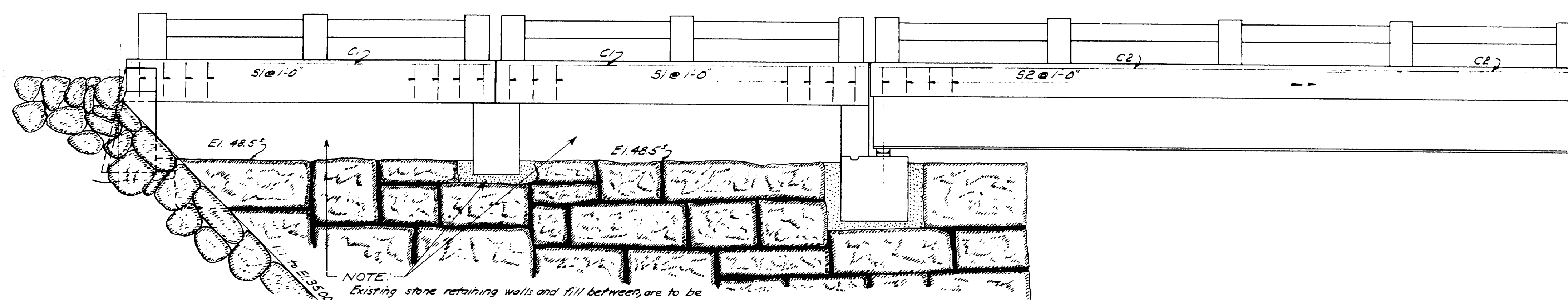
PLOT & TRACE - SIROIS
 CHECK - *Ham*
 BRIDGE - 5578
SPRUCEHEAD BRIDGE
 SOUTH THOMASTON
 KNOX COUNTY
 SHEET 3 OF 7 AUGUSTA, MAINE JUNE, 1953

0 1 2 3 4 5 INCHES

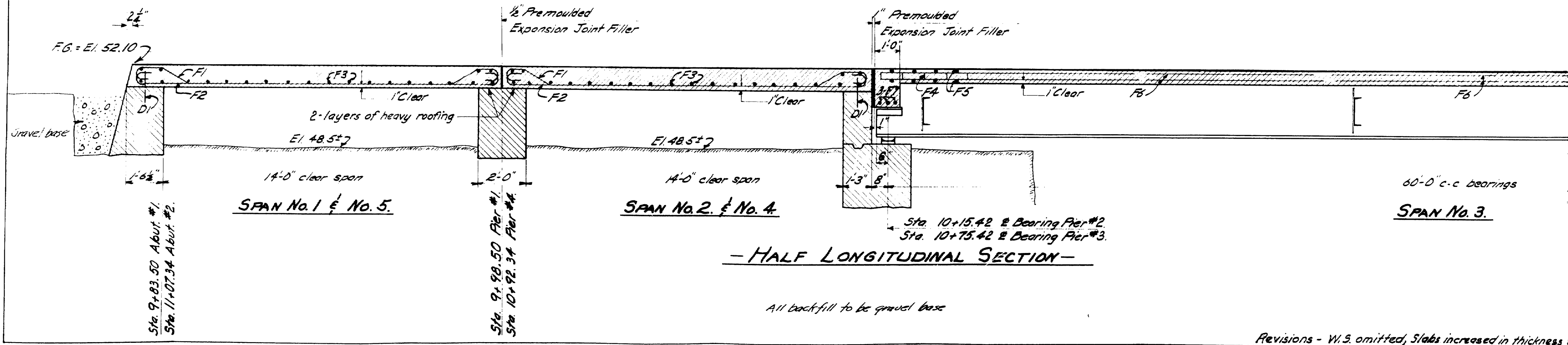
60-92



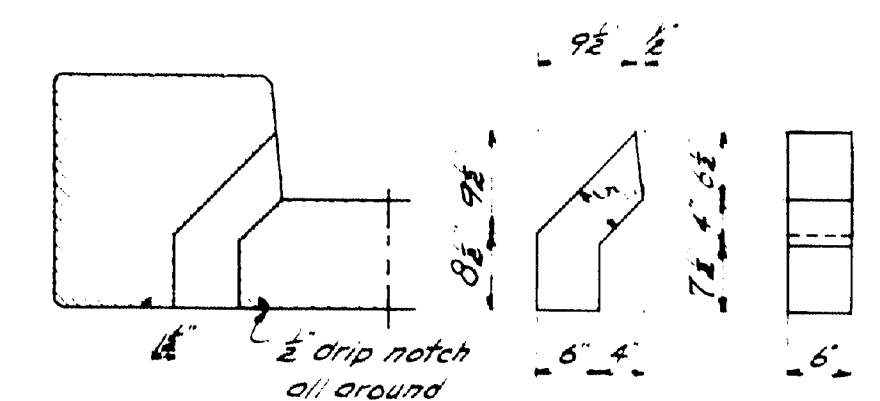
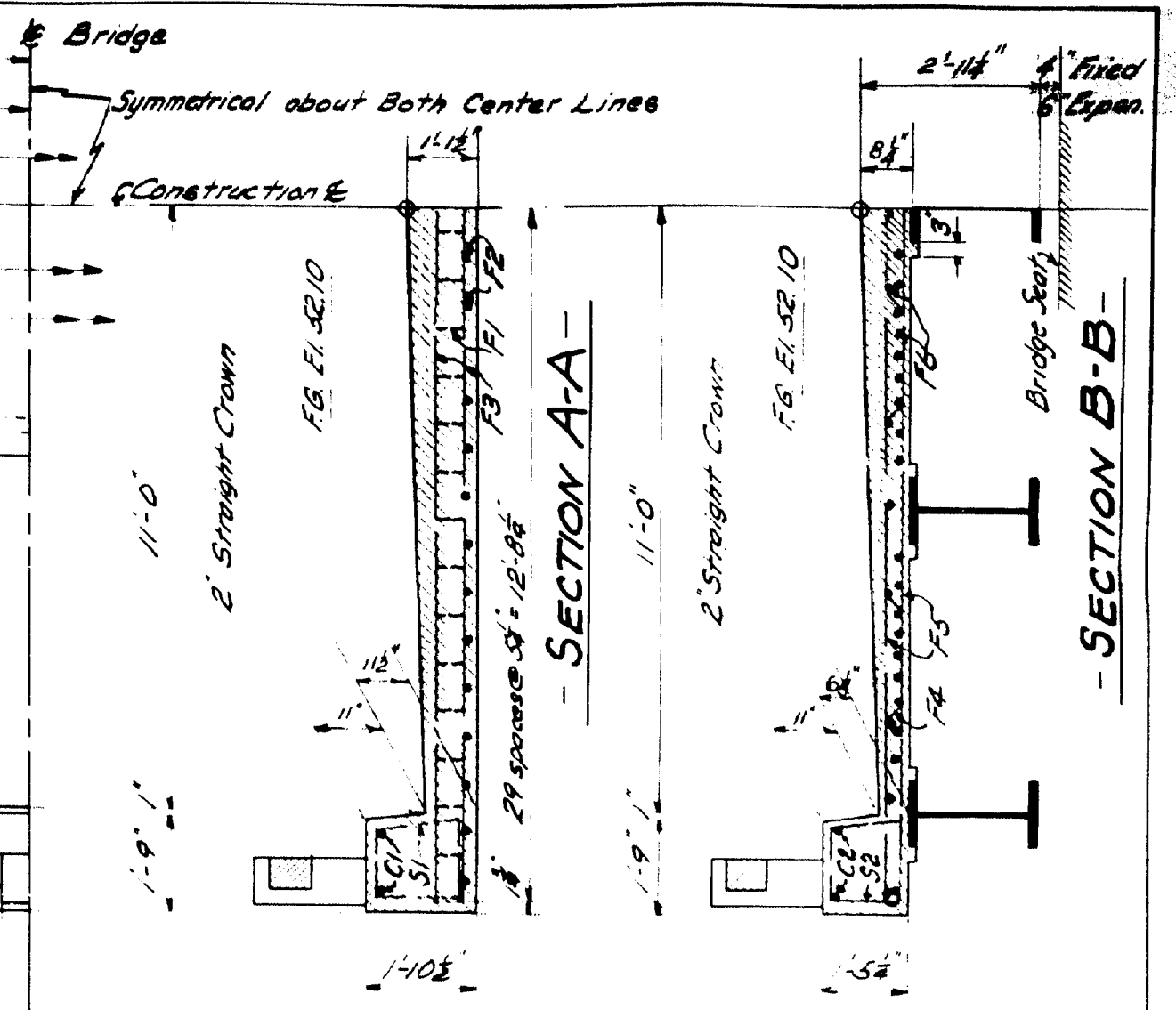
— QUARTER PLAN —



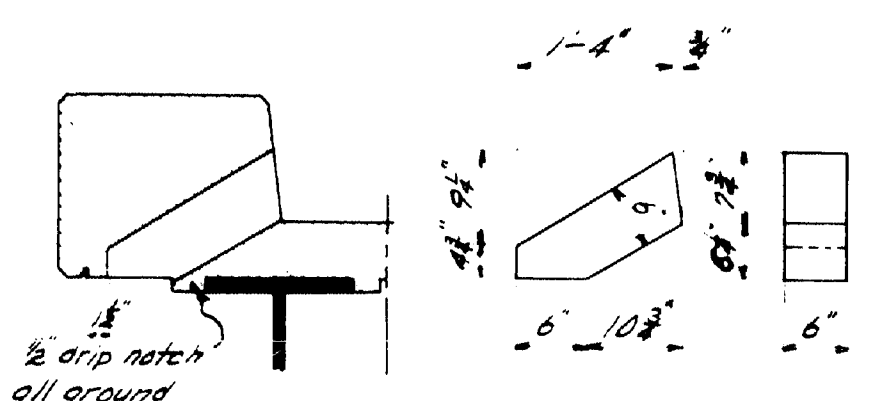
— HALF ELEVATION —



— HALF LONGITUDINAL SECTION —



— DRAIN DETAILS - SPANS 1-2-4-5 —
*24 gage galvan. iron - 8 req'd



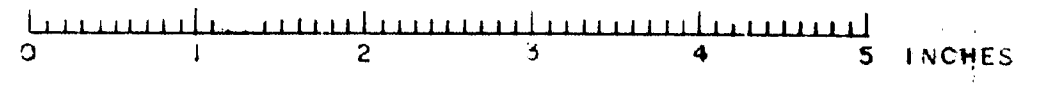
— DRAIN DETAILS - SPAN 3 —
*24 gage galvan. iron - 6 req'd

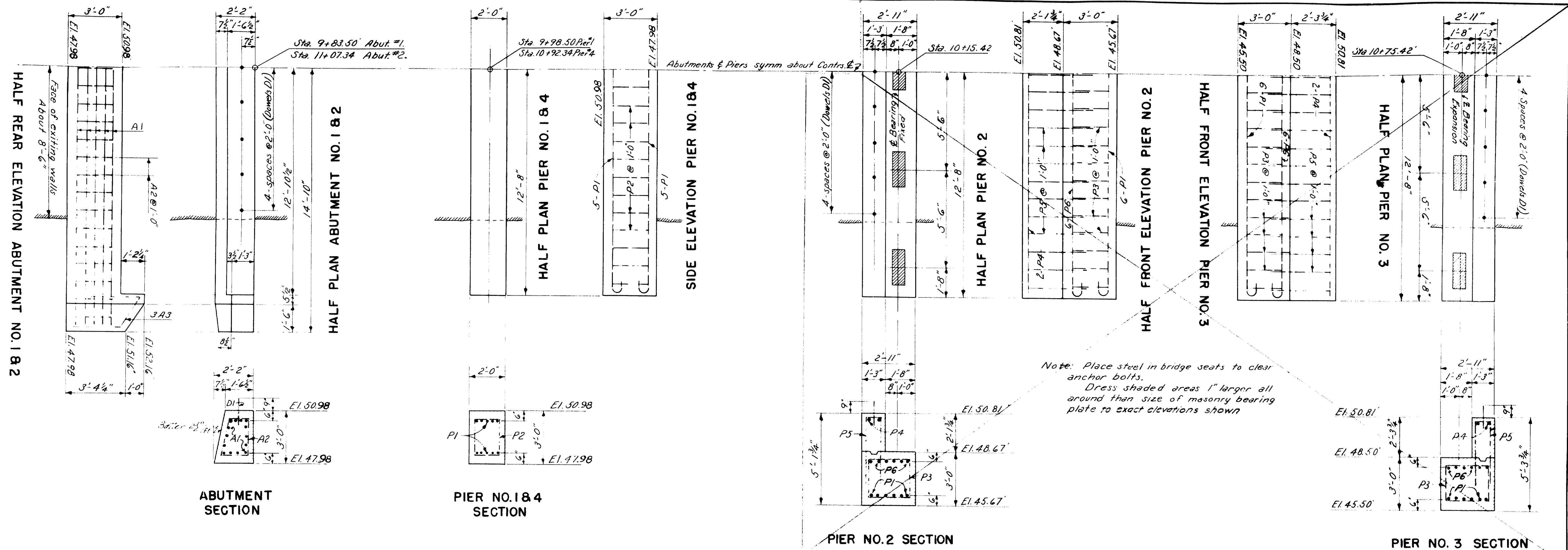
H-15-44 Loading
 $f_s = 18000 \text{ psi}$
 $f_c = 1200 \text{ psi}$
 $n = 10$
 CONCRETE CLASSIFICATION
 Class A = slope abutments & piers
 Class Y = Ret.

DESIGN — HAMILTON
 TRACE — BACHELDER
 CHECK — *[Signature]*
 BRIDGE — 5578
 STATE HIGHWAY COMMISSION
 BRIDGE DIVISION
SPRUCEHEAD BRIDGE
 OVER
FERRY HOLE
 IN THE TOWN OF
SOUTH THOMASTON
KNOX COUNTY
 SUPERSTRUCTURE
 SHEET 4 OF 7 AUGUSTA, MAINE MAY, 1953

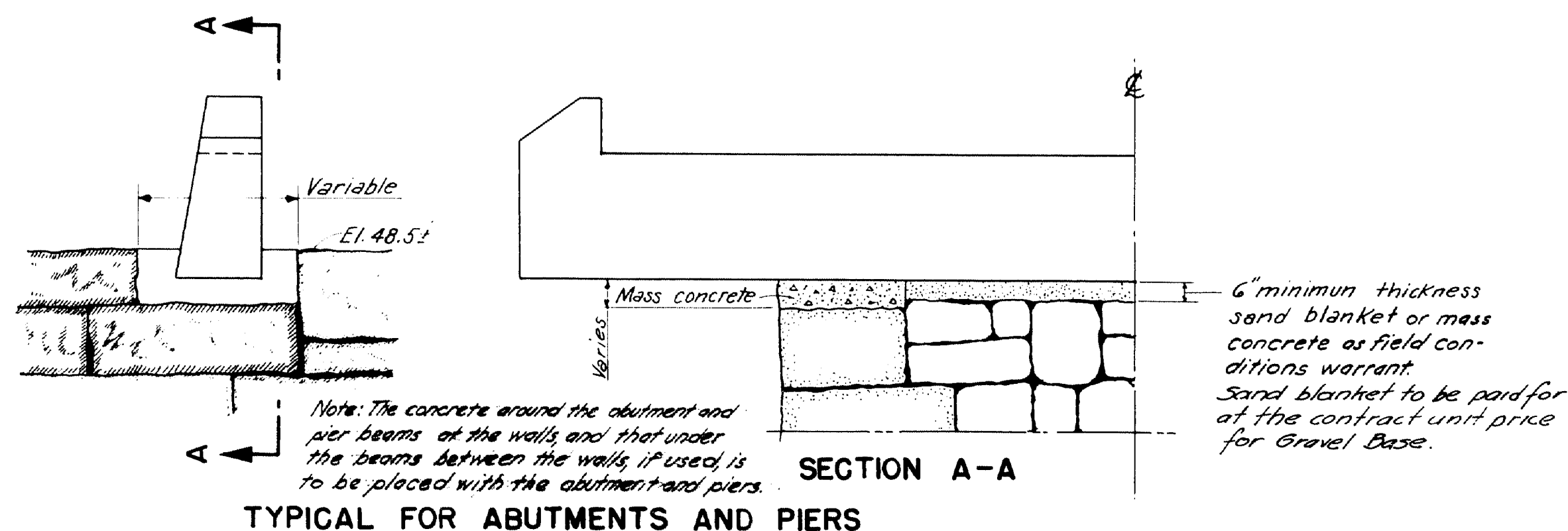
Revisions - W.S. omitted, Slabs increased in thickness and drain details.
 May 54 - *[Signature]*

60-93





See Revised Sheet #6a

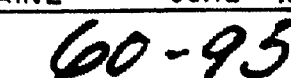


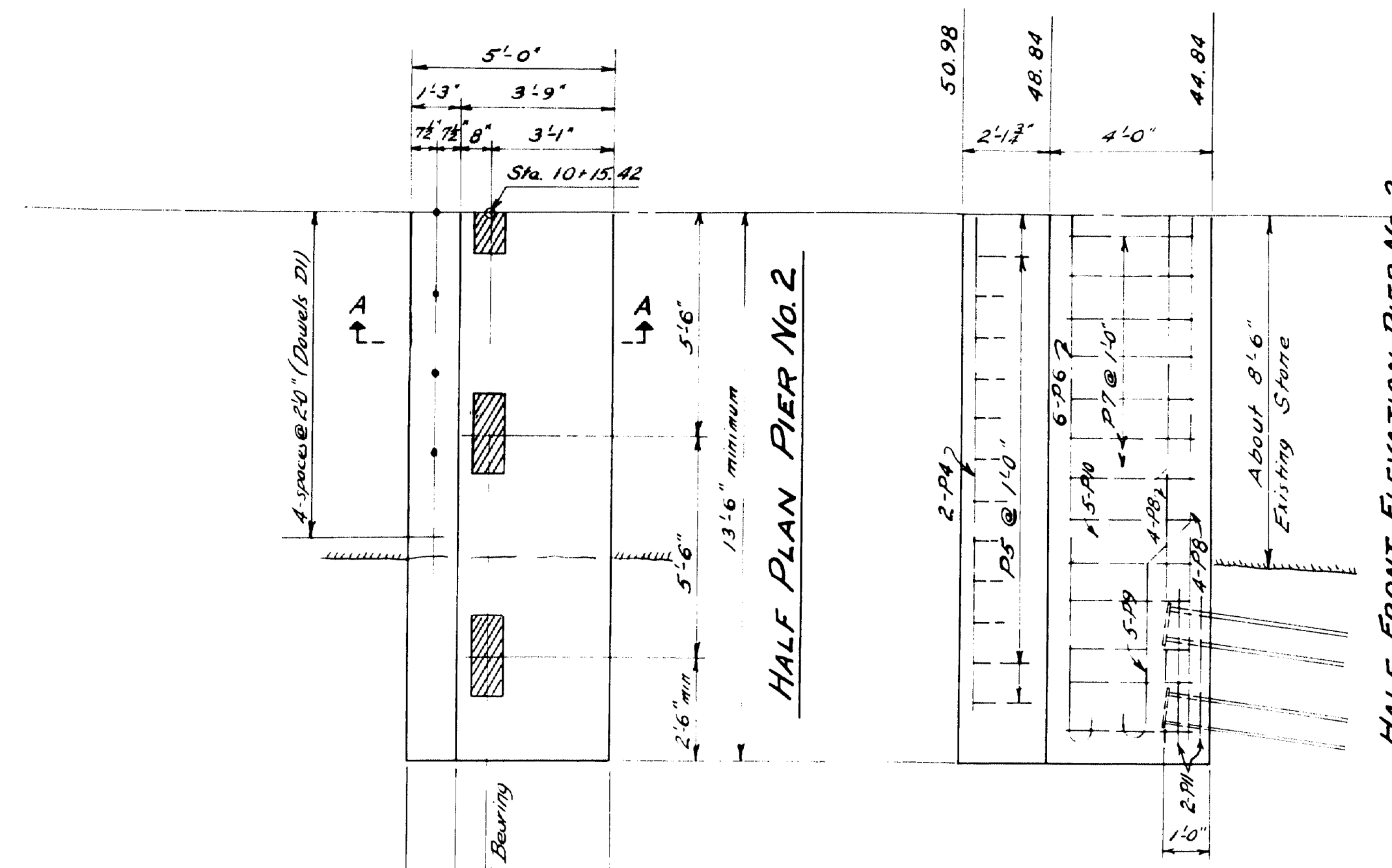
Note: In order to construct abutments and piers, it will be necessary to remove portions of existing retaining walls and fill between, to at least 6\"/>

NOTE: This sheet is replaced by sheets 60 & 60b.

DESIGN - HAMILTON	BRIDGE - 5578
TRACE - MCDUGAL	
CHECK - <i>Edw.</i>	
STATE HIGHWAY COMMISSION	
BRIDGE DIVISION	
SPRUCHEAD BRIDGE	
OVER	
FERRY HOLE	
IN THE TOWN OF	
SOUTH THOMASTON	
KNOX COUNTY	
PIERS & ABUTMENTS	
SHEET 5 OF 7	AUGUSTA, MAINE JUNE, 1953

60-94

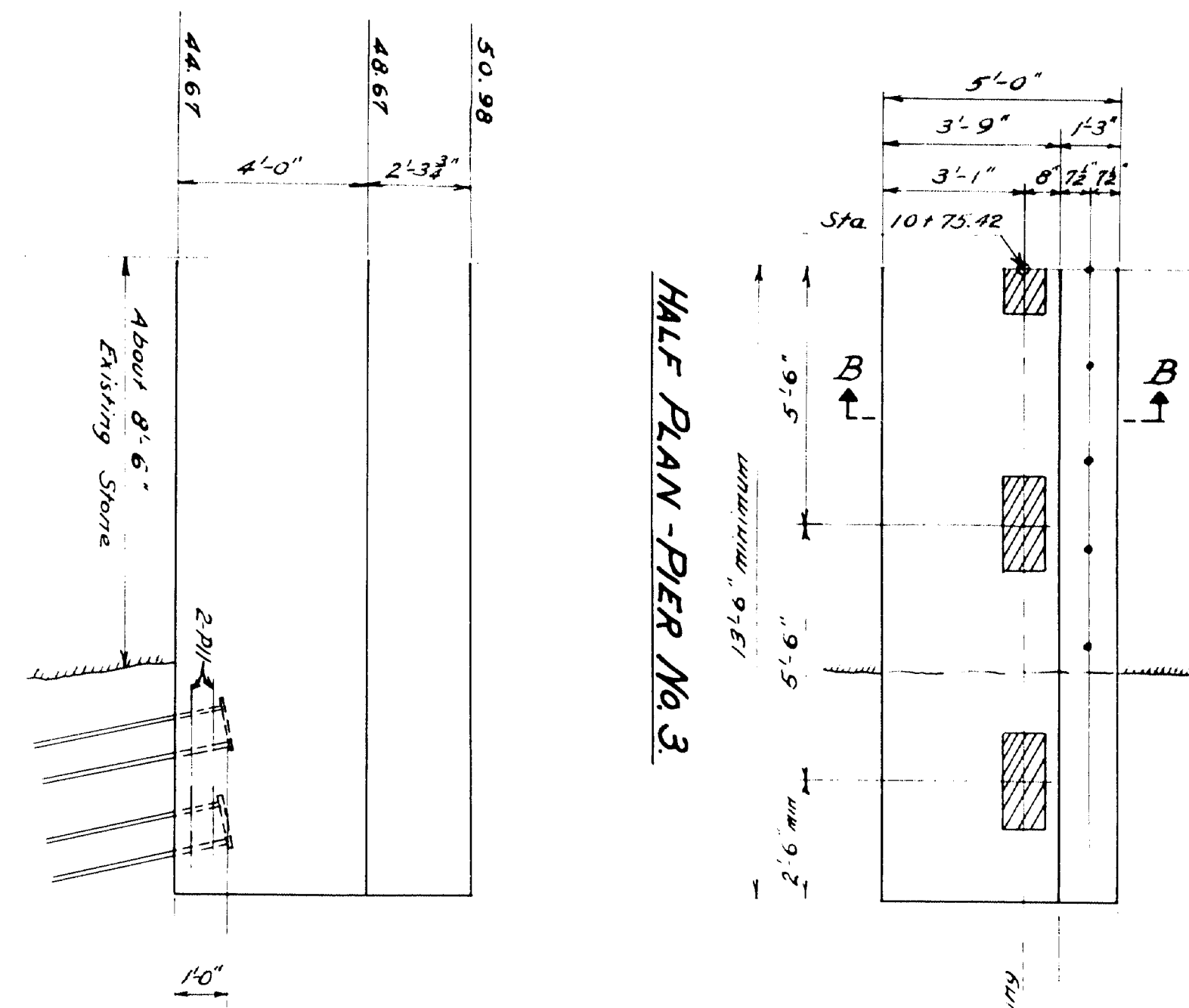




HALF FRONT ELEVATION PIER No. 2

Symm. about Constr. L 2

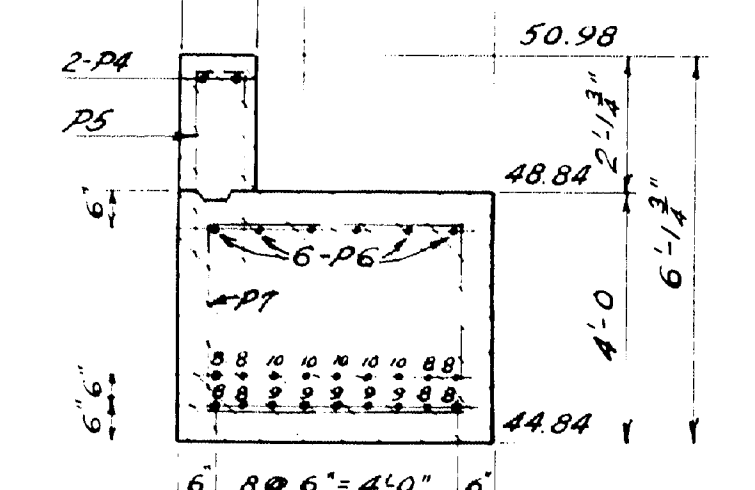
HALF FRONT ELEVATION PIER No. 3



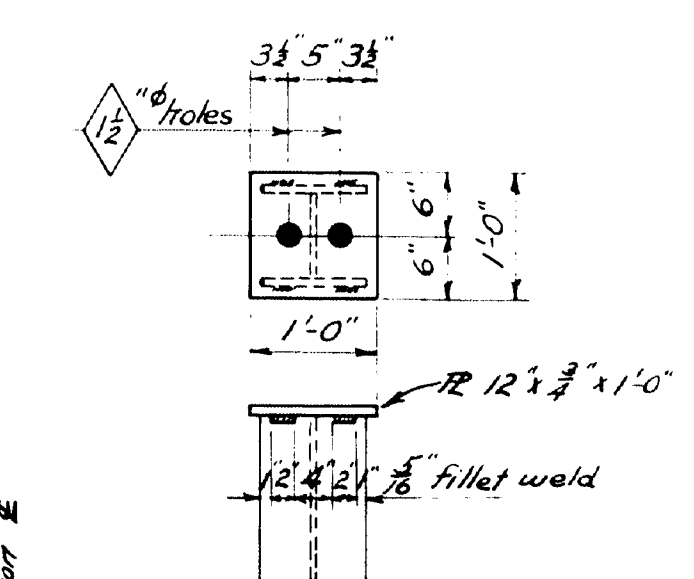
HALF PLAN PIER No. 3

GENERAL NOTES

Reinforcing steel for PIER #3 same as for PIER #2.
Place steel in bridge seats to clear anchor bolts.
Dress shaded areas 1" larger all around than size of masonry plate to exact elevations shown.
Bars P4, P5, P6 listed in original Steel Schedule.



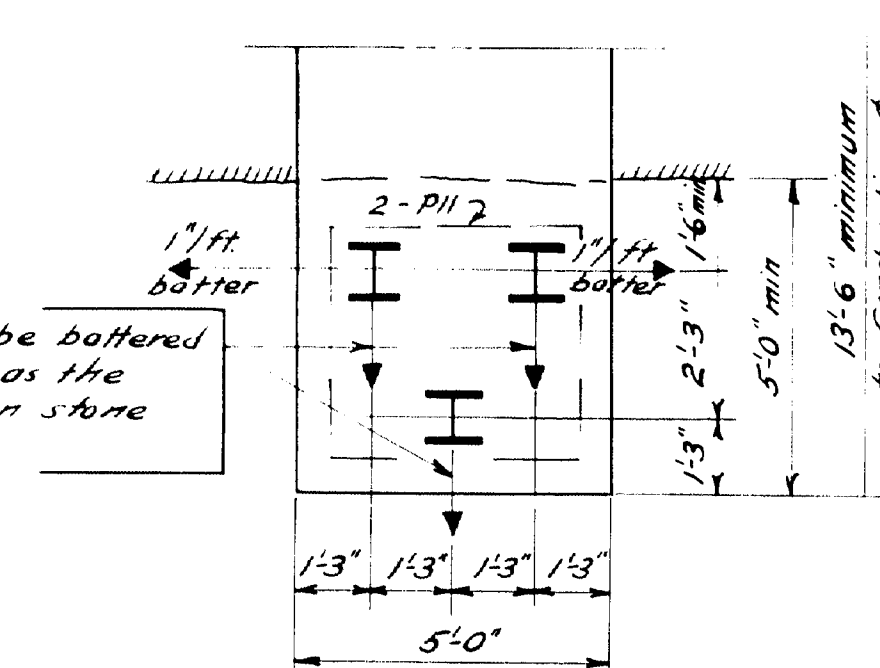
SECTION A-A



PILE CAP

12' reg'd

Note: Piles to be battered about the same as the existing batter on stone walls.



PILE PLAN

Steel H-piles 10' x 10' x 42' or 57'
12' reg'd
Piles to be battered as shown

ADDITIONAL REINFORCING STEEL REQUIRED

Dimensions to E of bars.

BENT BARS									
Mark	No	Size	A	B	C	D	E	Length	Location
P9	10	#10	15'-0"	1'-0"	4'-4"	1'-0"	1'-5"	24'-8"	Piers #2 & #3
P10	10	#10	12'-0"	2'-6"	4'-4"	2'-6"	3'-6"	30'-11"	" " "
P7	52	#4						14'-11"	" " "
P11	8	#7						18'-6"	" " "
STRAIGHT BARS									
P8	16	#10						26'-0"	Pier #2 & #3

Note: This sheet replaces Sheet #5 of Original Plans.

DESIGN-HAMILTON
TRACE-MORRISON
CHECK

BRIDGE-5578

STATE HIGHWAY COMMISSION
BRIDGE DIVISION

SPRUCEHEAD BRIDGE
OVER
FERRY HOLE
IN THE TOWN OF
SOUTH THOMASTON
KNOX COUNTY
REVISIONS—PIERS NO. 2 & NO. 3
SHEET 60 OF 7 AUGUSTA, MAINE MAY, 1954

60-96

