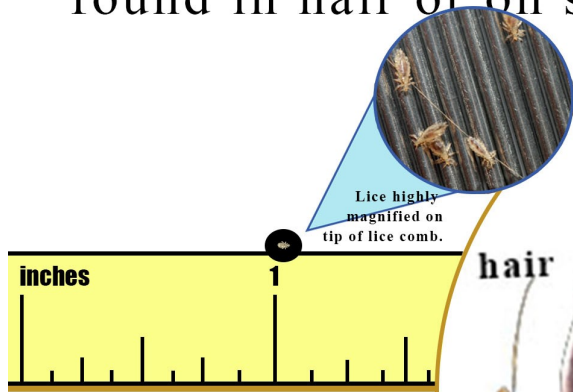


# Head Lice

## Identify

- Tan-colored oval eggs are called nits, and are attached at base of hair shaft.
- Adults and nymphs are tan to grey/white with six legs, found in hair or on scalp.



## Communicate

- Children infested do not need to be sent home.
- Provide information and guidance to parents of infested students
- Guidance can be found here:  
<https://www.cdc.gov/parasites/lice/head/treatment.html>
- Remind students and families to avoid sharing combs and other hair accessories.

## Monitor

- An itchy scalp is often the first symptom.
- Use fine-toothed comb and strong light to inspect head and hair if head lice are suspected.
- Look for crawling lice and eggs near the scalp.



## Take Action

- **At School**
  - Vacuum floor and furniture in the classroom.
- **At Home**
  - Apply over-the-counter or prescription head lice treatment product to hair.
  - Thoroughly nit comb at least weekly.

